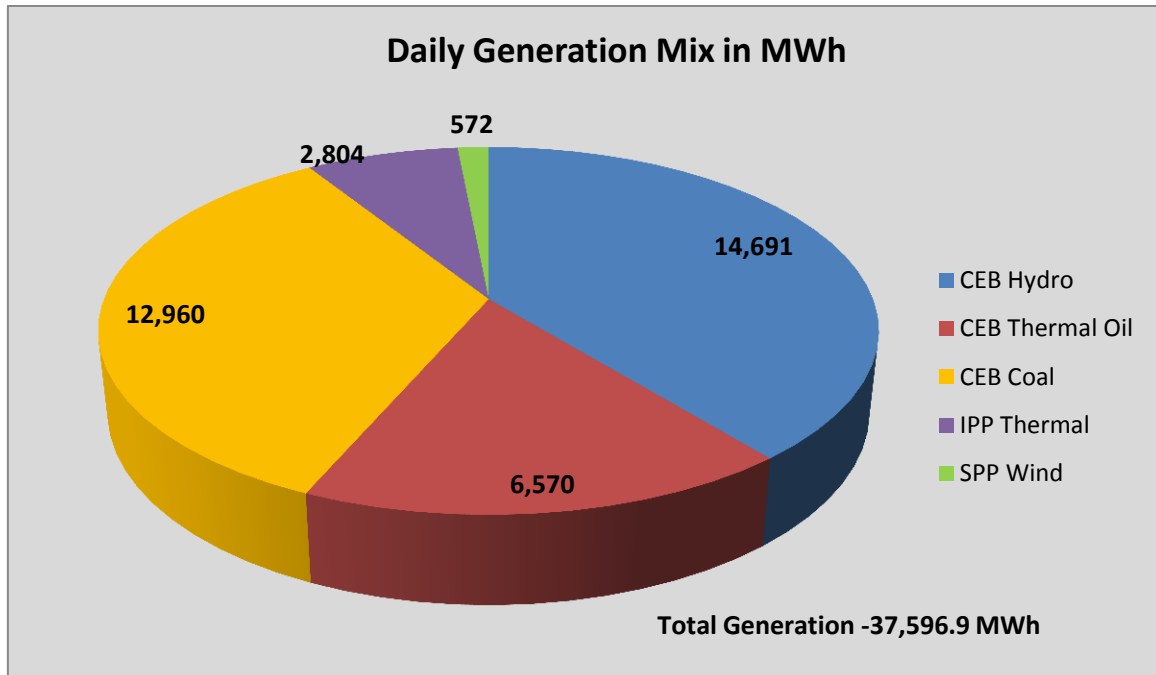


Generation and Reservoirs Statistics

June 23, 2016



PUBLIC UTILITIES COMMISSION OF SRI LANKA



Note: Generation from other SPPs (Mini Hydro, Solar and Biomass) is not included

Cumulative Dispatch- 2016

June, 2016

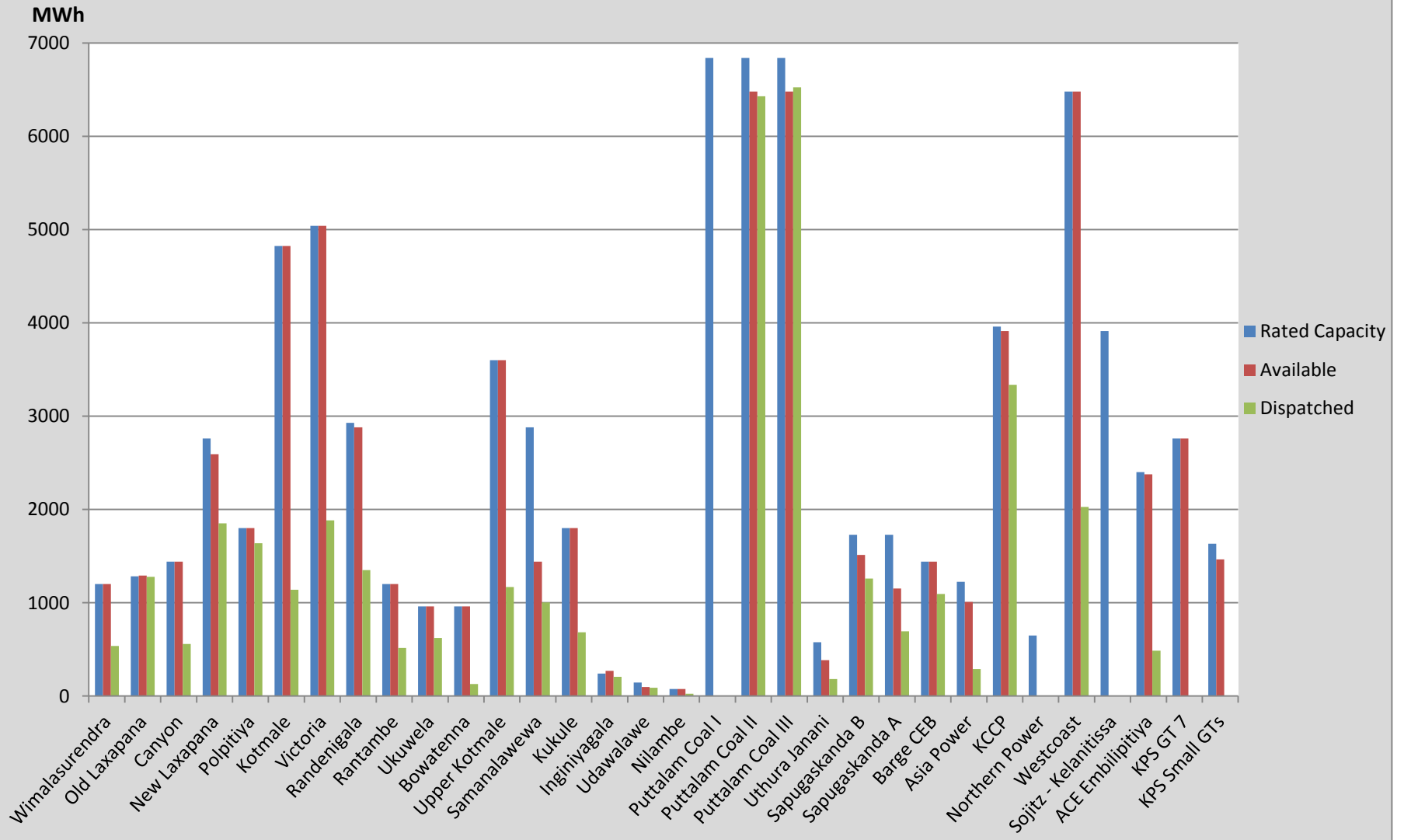
Category	Dispatch (MWh)	
CEB Hydro	359,007.0	44.99%
CEB Thermal Oil	96,650.0	12.11%
CEB Coal	299,860.0	37.58%
IPP Thermal	5,467.0	0.69%
SPP Wind	36,937.4	4.63%
Total	797,921.4	

January 1 to June 23, 2016

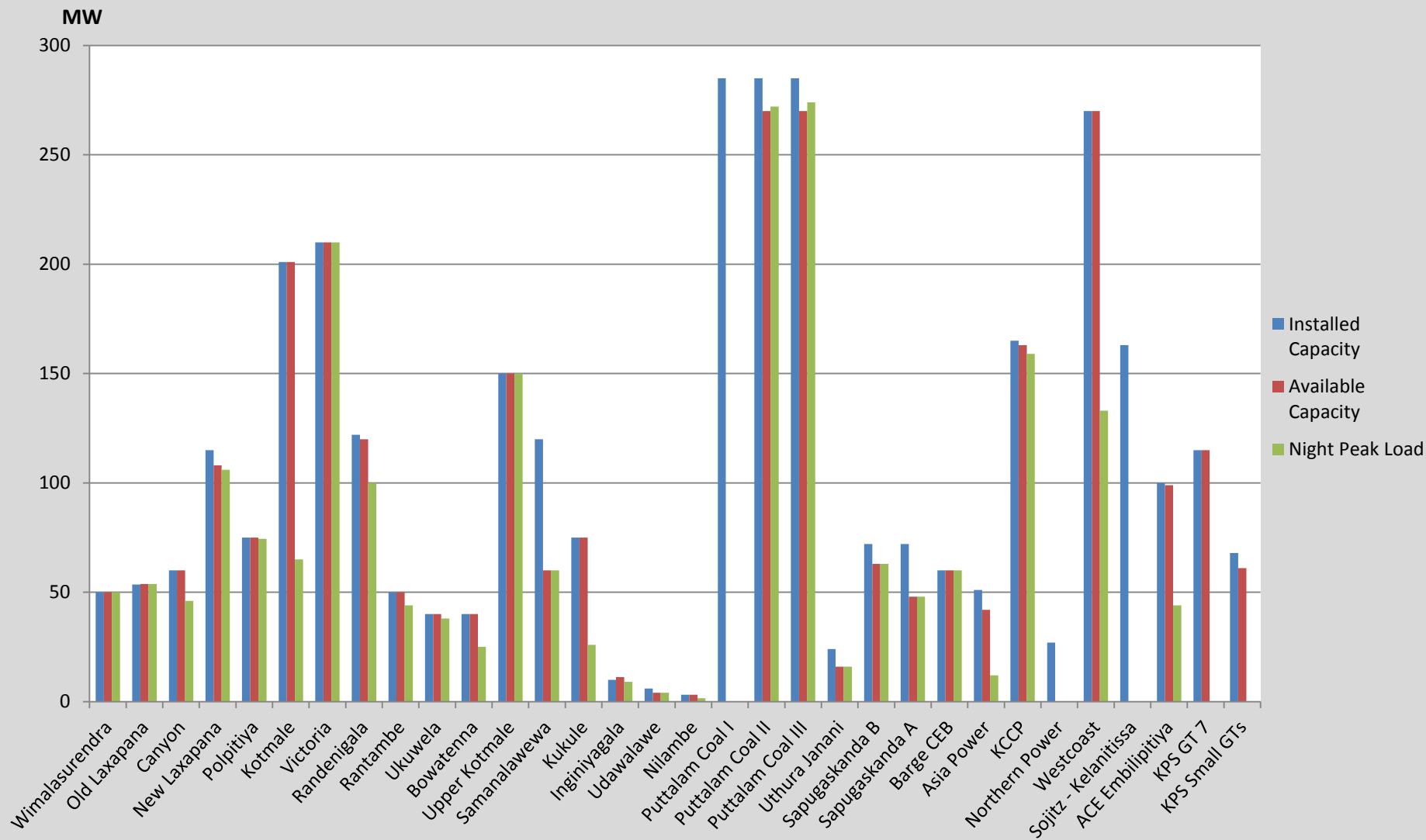
Category	Dispatch (GWh)	
CEB Hydro	1,992	30.86%
CEB Thermal Oil	982	15.21%
CEB Coal	2,219	34.37%
IPP Thermal	959	14.86%
Renewable	304	4.70%
Total	6,456	

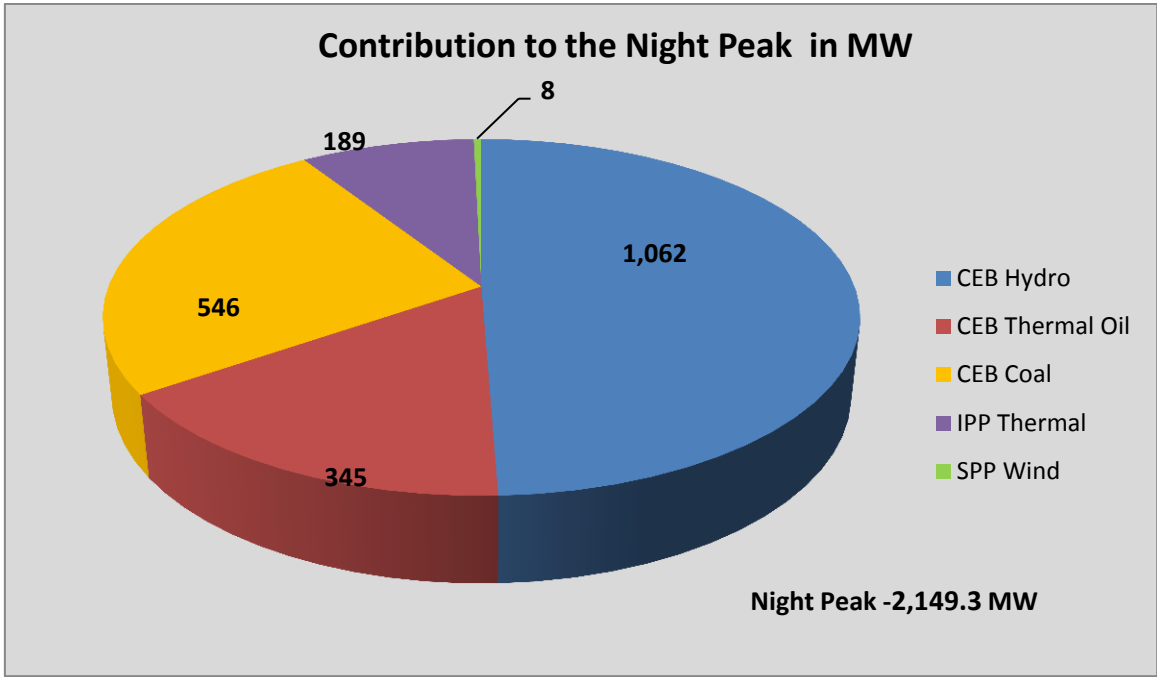
Note: Generation from Mini Hydro, Solar and Biomass power plants during April, May and June is not included in annual cumulative renewable generation figure.

Dispatch on June 23, 2016



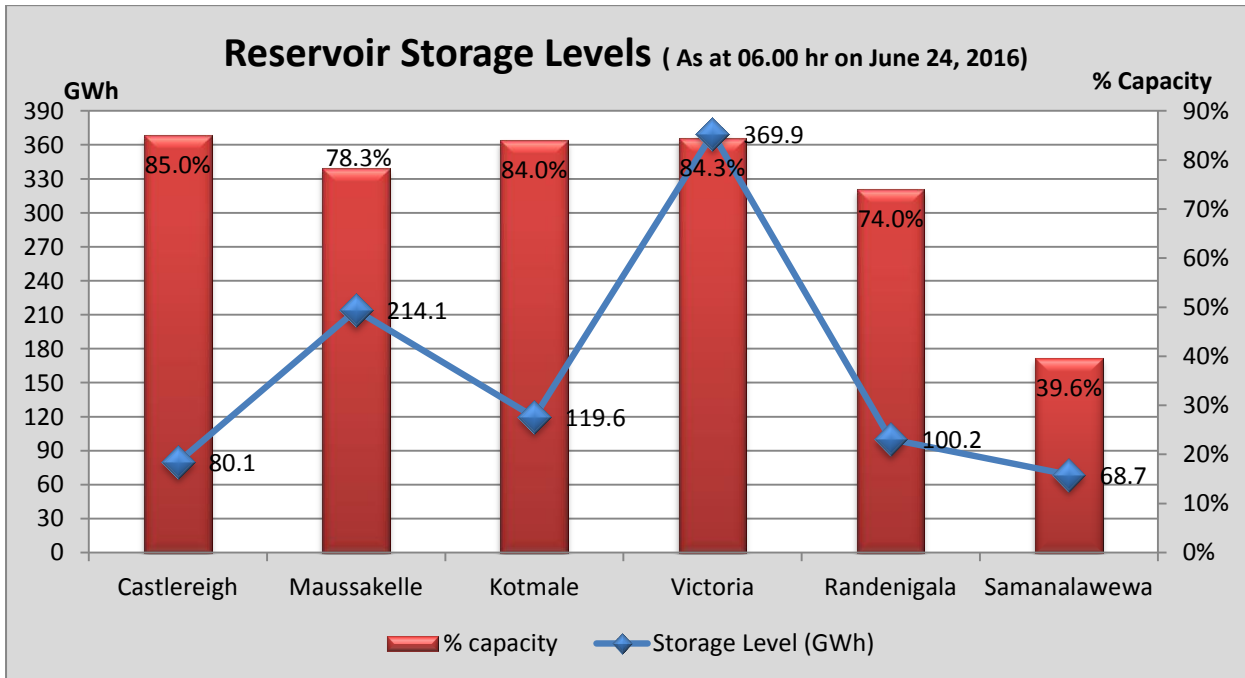
Night Peak Contribution on June 23, 2016





- Day Peak Demand –1,807.1 MW
- Minimum Recorded Demand –1,078.1 MW

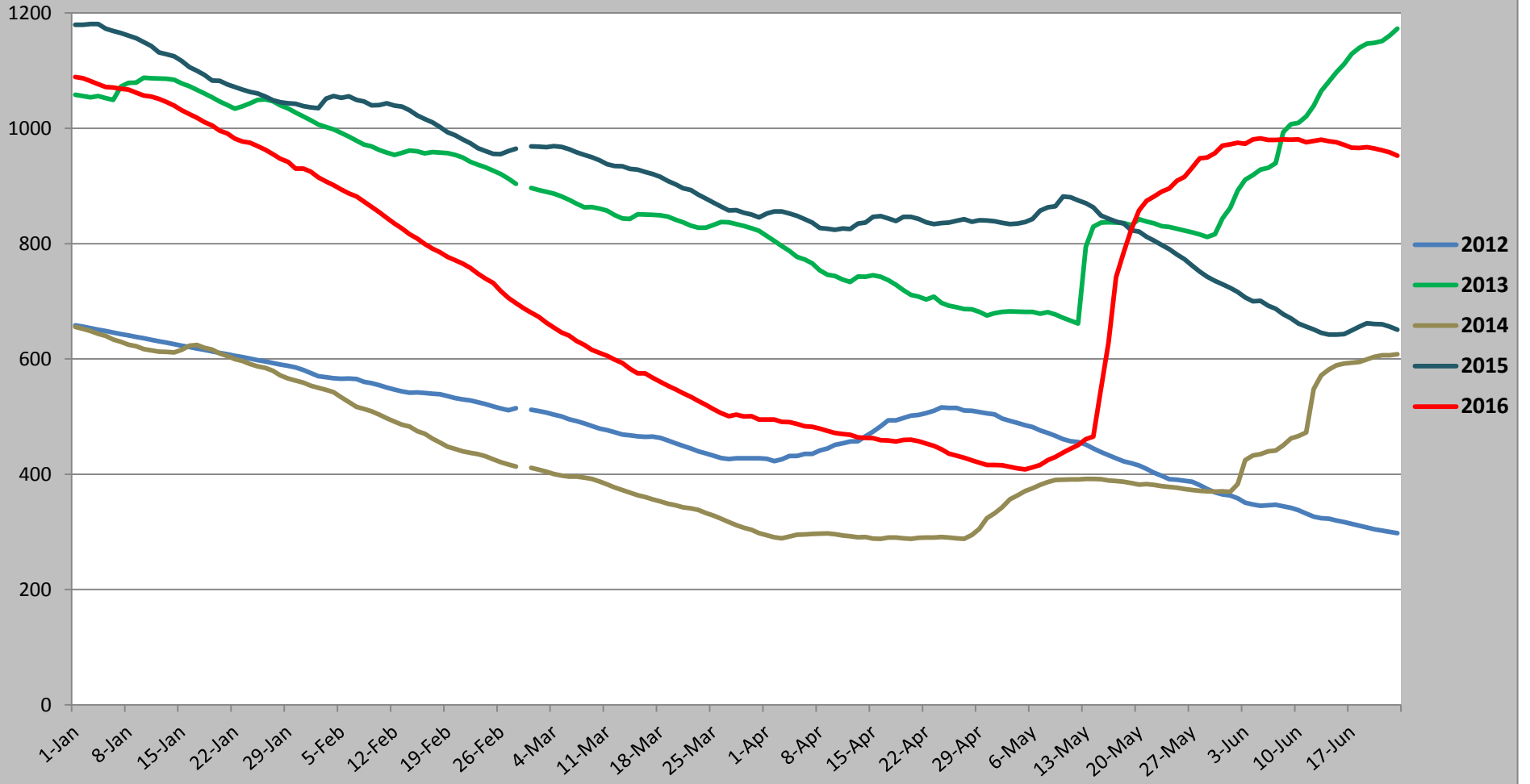
Note: Contribution from other SPPs (Mini Hydro, Solar and Biomass) is not included



Note: Hydro Reservoir Storage Capacity as at June 24, 2016 – 952.6 GWh (75.7%)

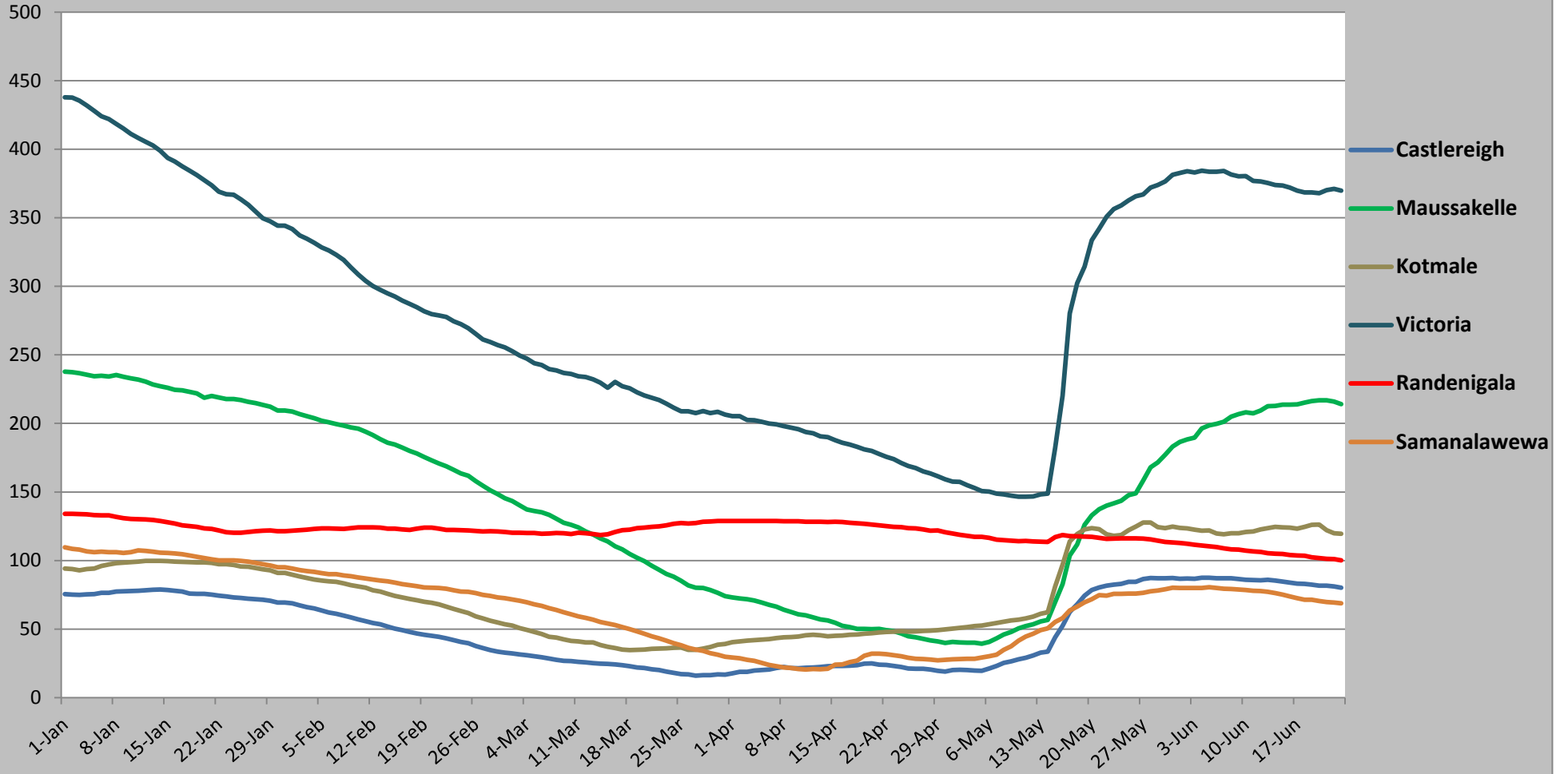
GWh

Comparison of Total Reservoir Storage Levels with Past Years

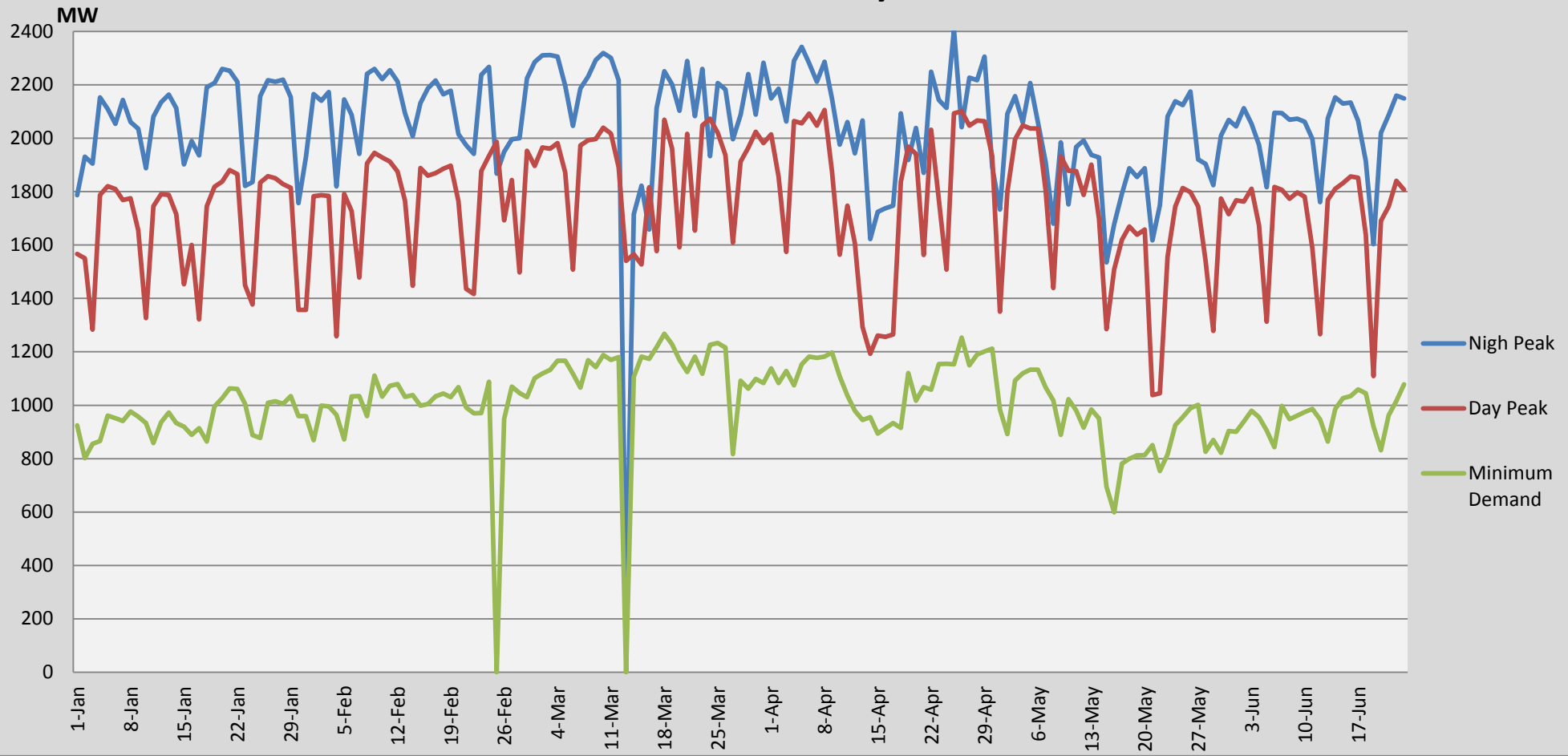


Major Hydro Reservoir Levels in GWh- 2016

GWh

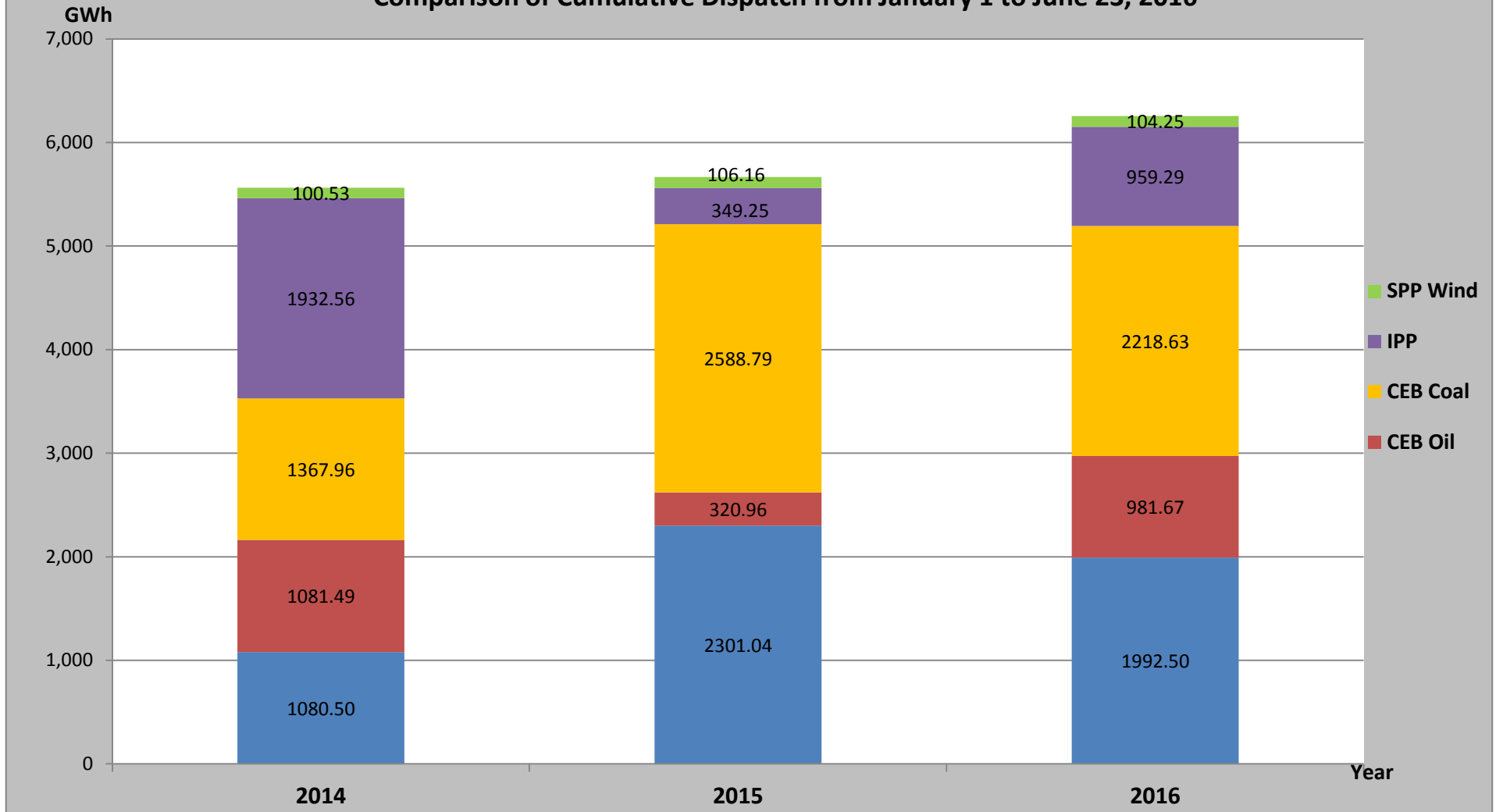


Demand Variation from January 1 to June 23, 2016



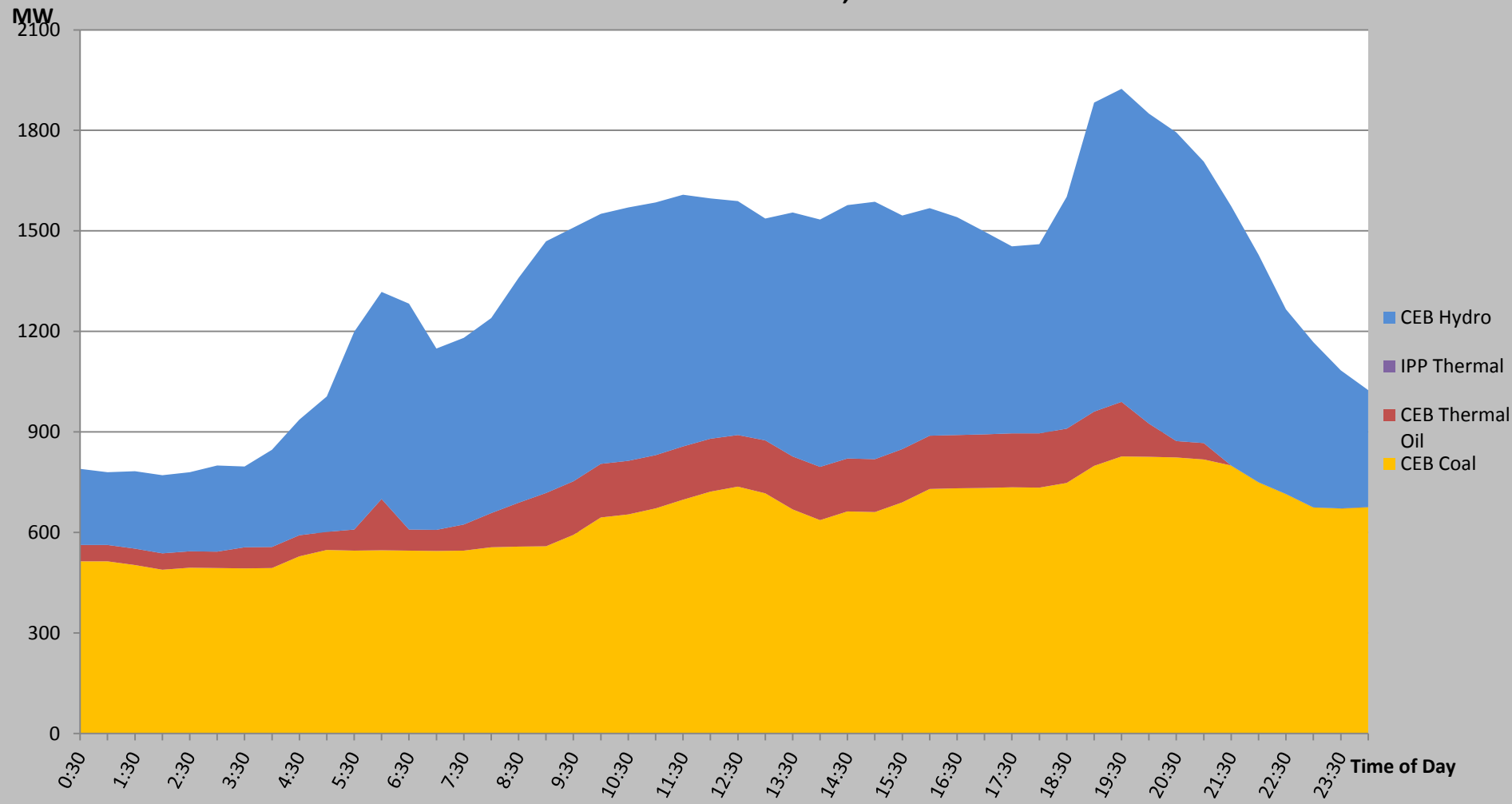
Note: Contribution from Mini Hydro, Solar and Biomass is not included

Comparison of Cumulative Dispatch from January 1 to June 23, 2016



Note: Generation from SPP Mini Hydro, Solar and Biomass is not included

Load Curve for June 21,2016



List of Power Stations

Power Station	Capacity (MW)	Primary Fuel
CEB Hydro		
Victoria	210	
Ukuwela	40	
Kotmale	201	
Randenigala	122	
Rantambe	49	
Bowatenna	40	
Nilambe	3.2	
Upper Kotmale	150	
Old Laxapana	50	
New Laxapana	115	
Polpitiya	75	
Wimalasurendra	50	
Canyon	60	
Samanalawewa	120	
Kukuleganga	75	
Inginiyagala	10	
Udawalawe	6	
CEB Thermal		
Sapugaskanda 1	72	Heavy Fuel
Sapugaskanda 2	72	Heavy Fuel
Kelanitissa Small Gas Turbines	68	Auto Diesel
GT 7 - Kelanitissa	115	Auto Diesel
Kelanitissa CCY	165	Naptha & Diesel
Lakvijaya (Puttalam Coal)	285	Coal
Lakvijaya (Puttalam Coal) Stage II	285	Coal
Lakvijaya (Puttalam Coal) Stage III	285	Coal
Uthuru Janani	24	Heavy Fuel
Barge CEB	60	Furnace Oil
Private Thermal (IPPs)		
Asia Power	51	Heavy Fuel
Sojitz - Kelanitissa	163	Auto Diesel
West Coast	270	Low Sulphur Furnace oil
Northern Power	27	Auto Diesel
ACE Embilipitiya	100	Furnace Oil