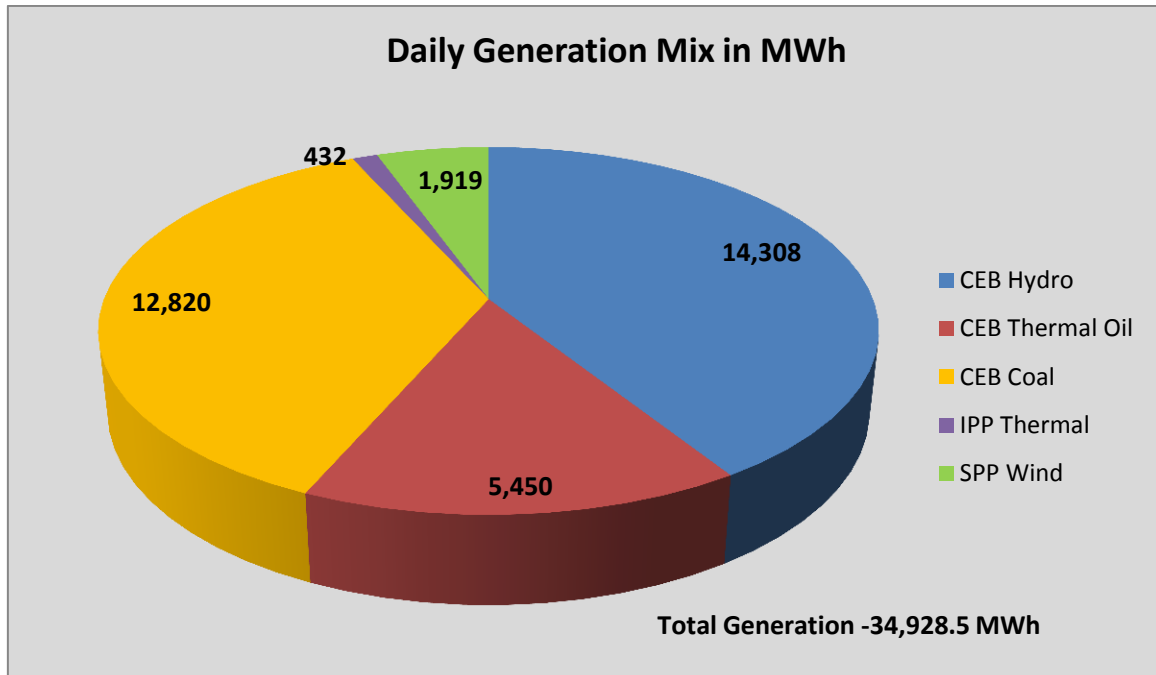


Generation and Reservoirs Statistics

13th June, 2016



PUBLIC UTILITIES COMMISSION OF SRI LANKA



Note: Generation from other SPPs (Mini Hydro, Solar and Biomass) is not included

Cumulative Dispatch- 2016

June, 2016

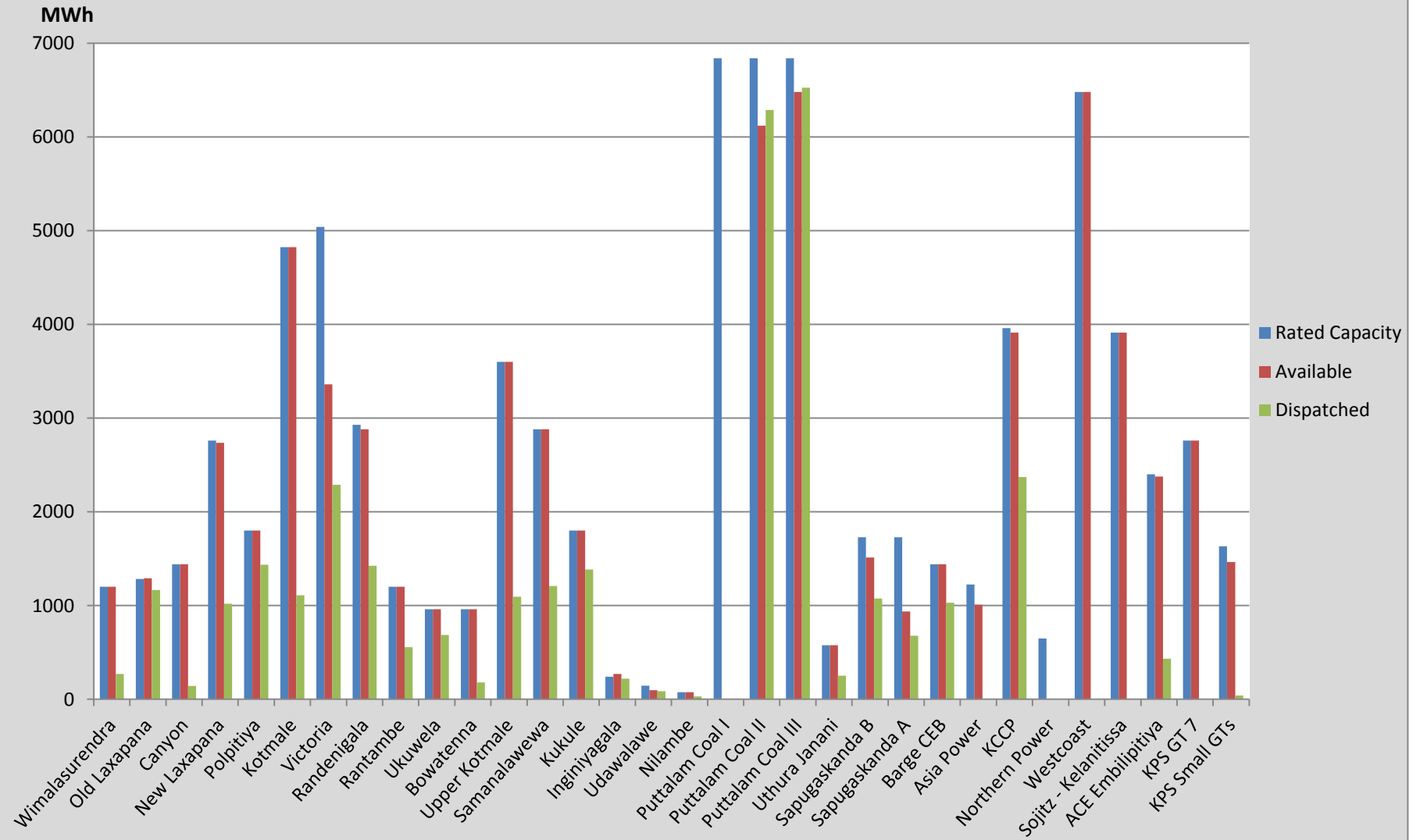
Category	Dispatch (MWh)	
CEB Hydro	207,540.0	46.60%
CEB Thermal Oil	49,630.0	11.14%
CEB Coal	163,740.0	36.77%
IPP Thermal	1,809.0	0.41%
SPP Wind	22,632.7	5.08%
Total	445,351.7	

1st January to 9th June, 2016

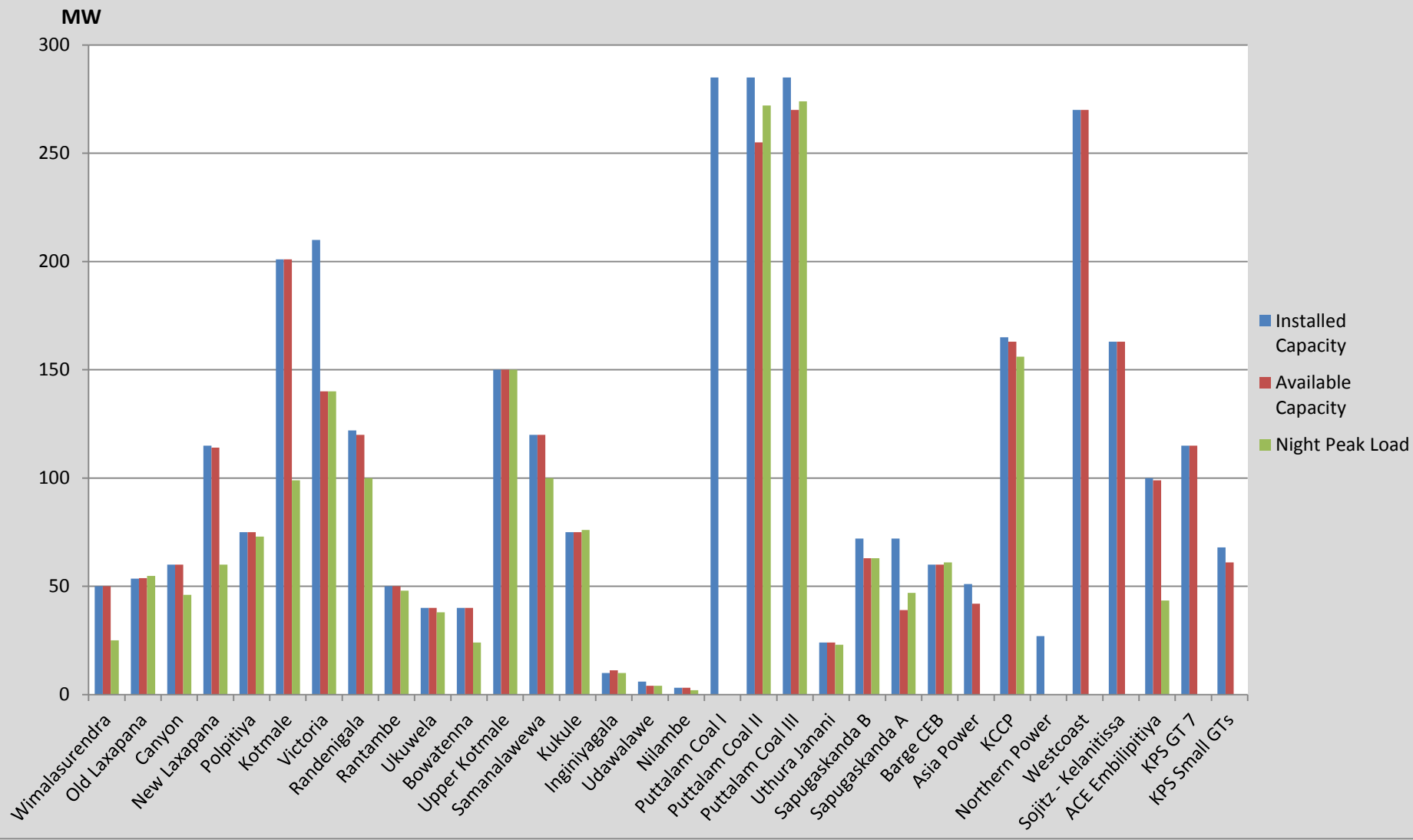
Category	Dispatch (GWh)	
CEB Hydro	1,841	30.17%
CEB Thermal Oil	935	15.31%
CEB Coal	2,083	34.12%
IPP Thermal	956	15.66%
Renewable	289	4.74%
Total	6,103	

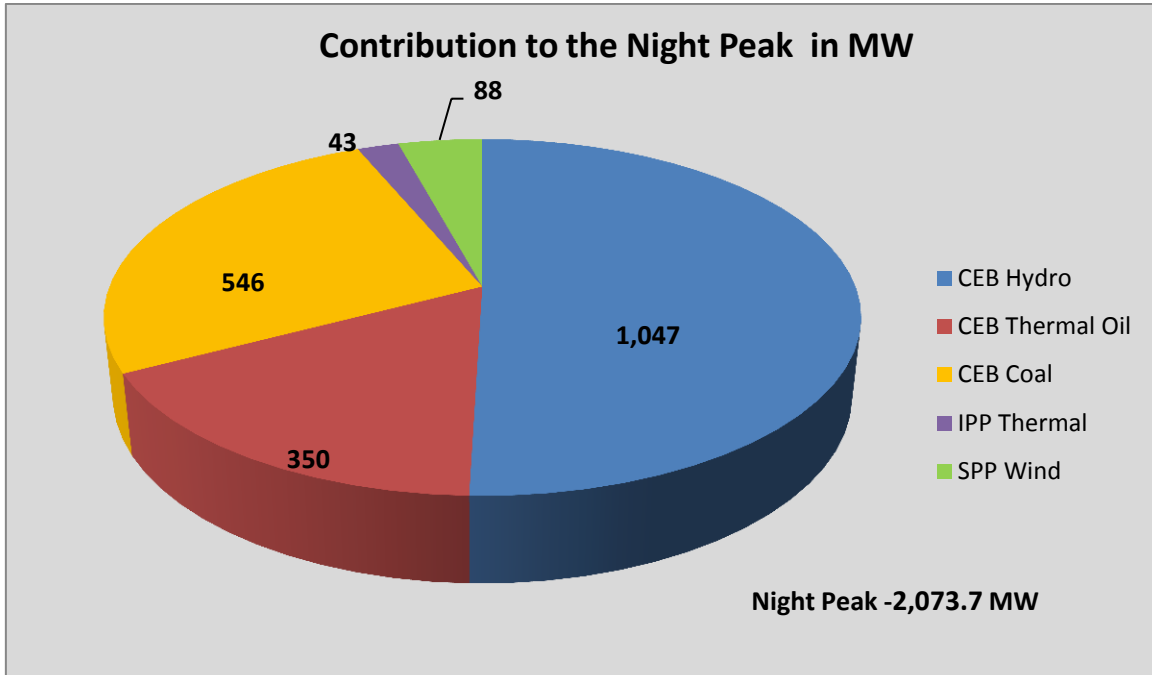
Note: Generation from Mini Hydro, Solar and Biomass power plants during April, May and June is not included in annual cumulative renewable generation figure.

Dispatch on 13th June 2016



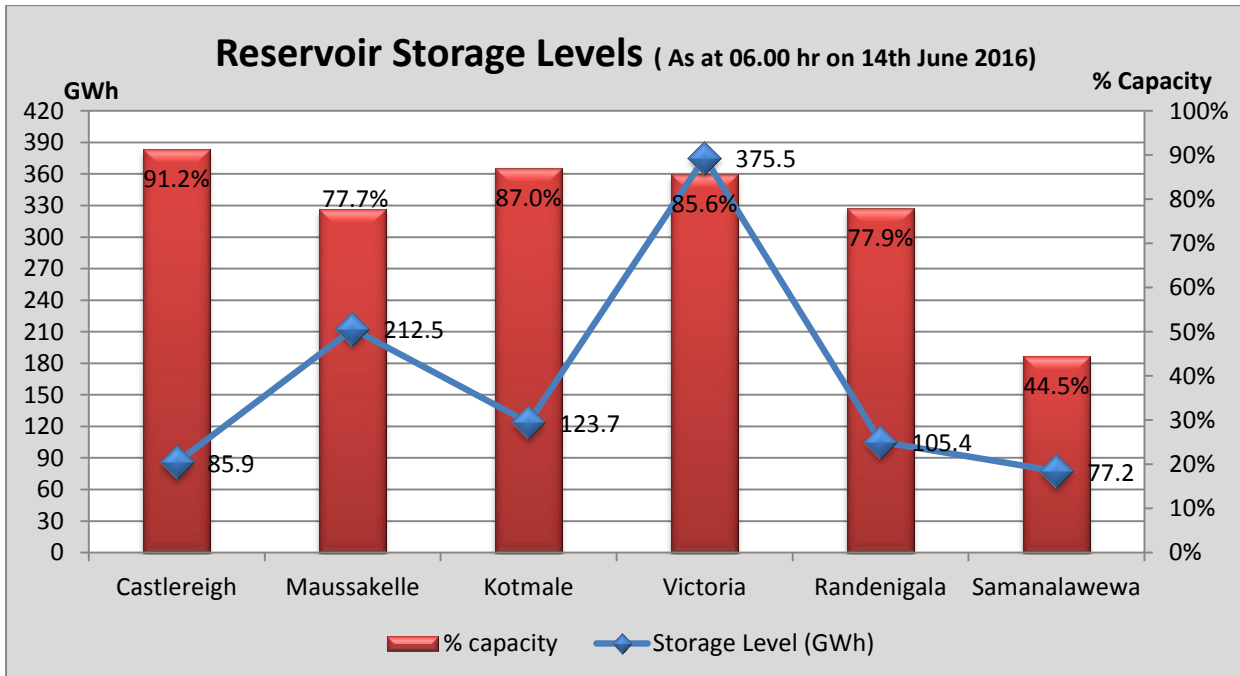
Night Peak Contribution on 13th June 2016





- Day Peak Demand –1,769.1 MW
- Minimum Recorded Demand –864.0 MW

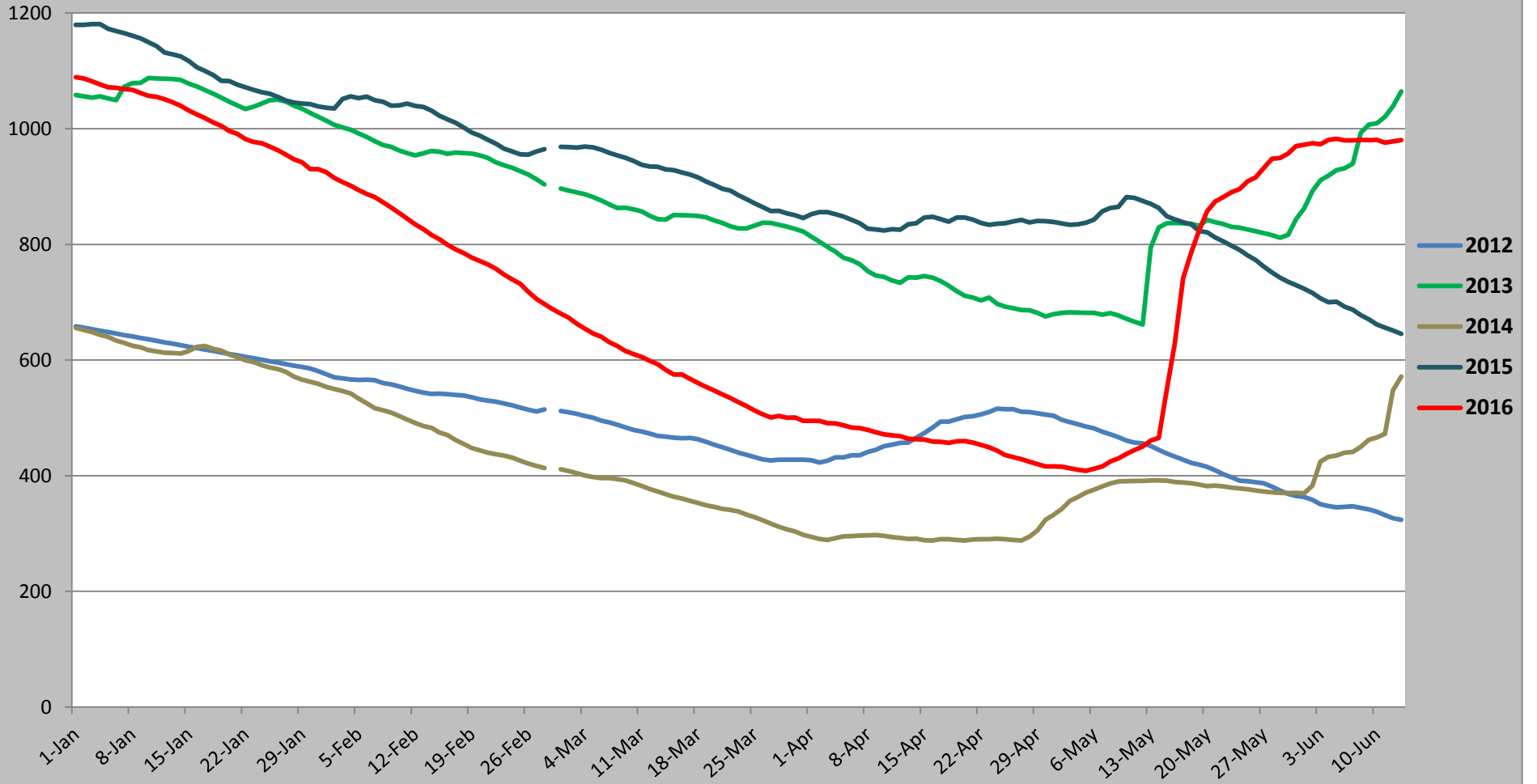
Note: Contribution from other SPPs (Mini Hydro, Solar and Biomass) is not included

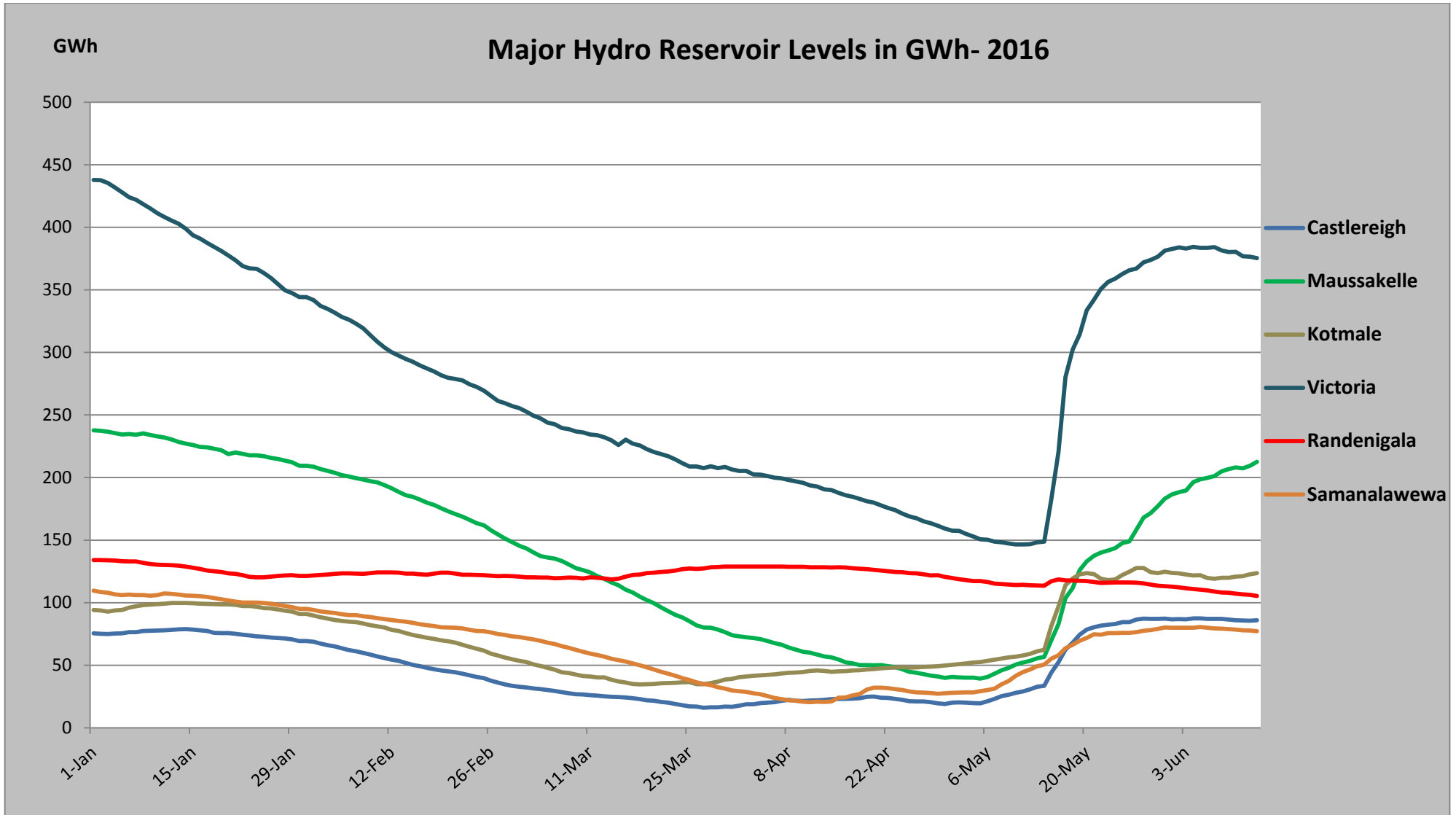


Note: Hydro Reservoir Storage Capacity as at 14th June 2016 – 980.2 GWh (77.9%)

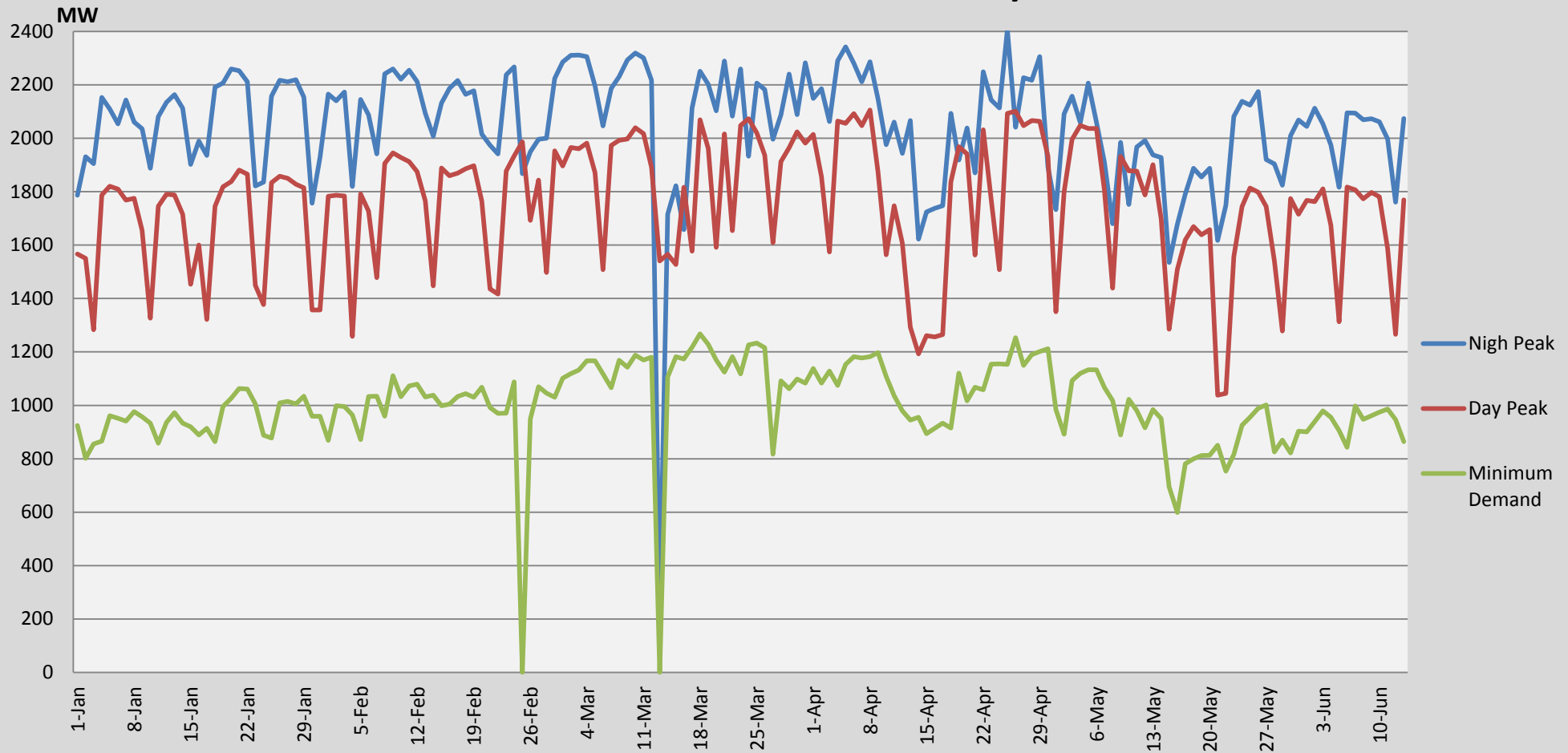
GWh

Comparison of Total Reservoir Storage Levels with Past Years

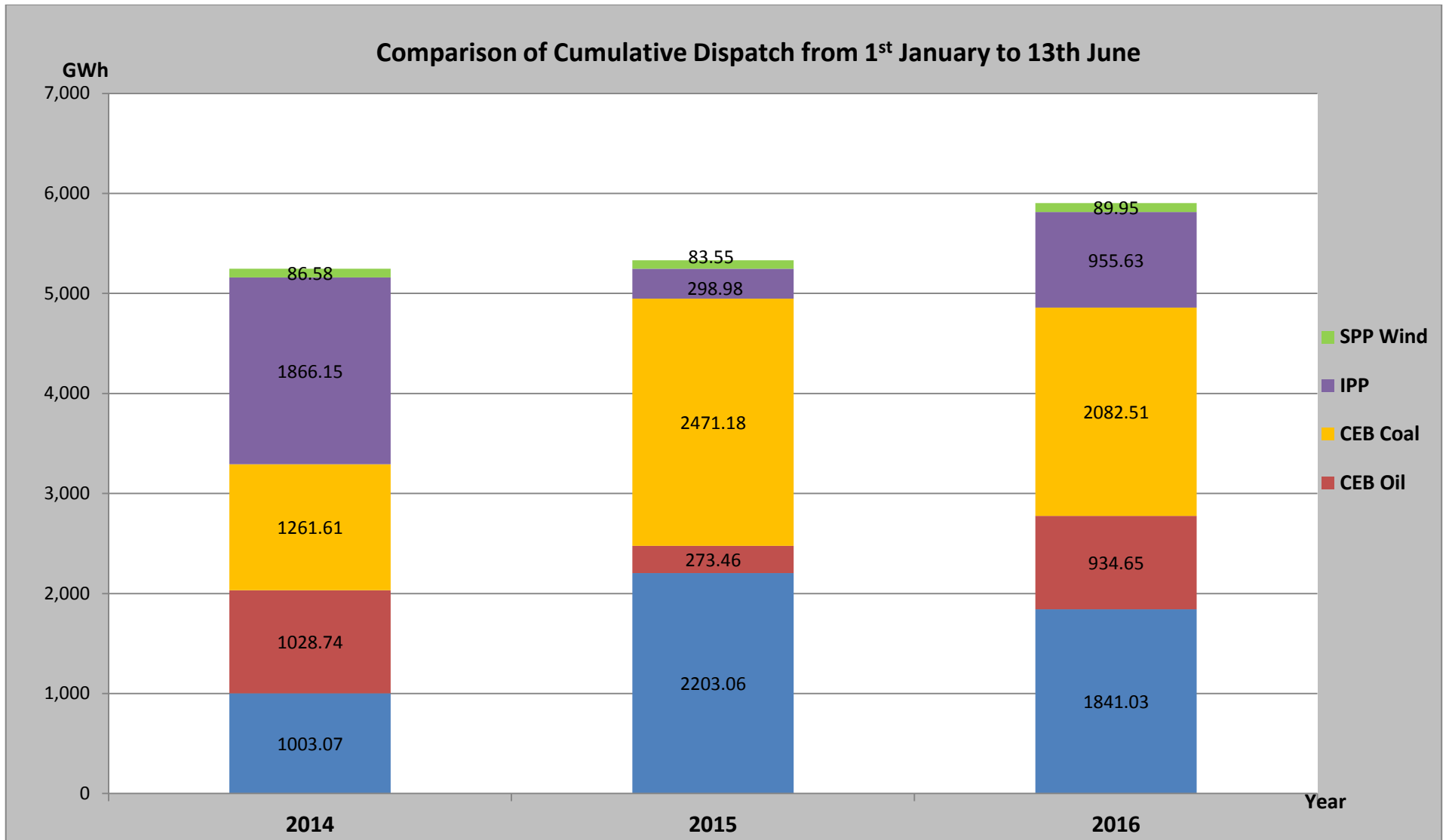




Demand Variation from 1st January 2016

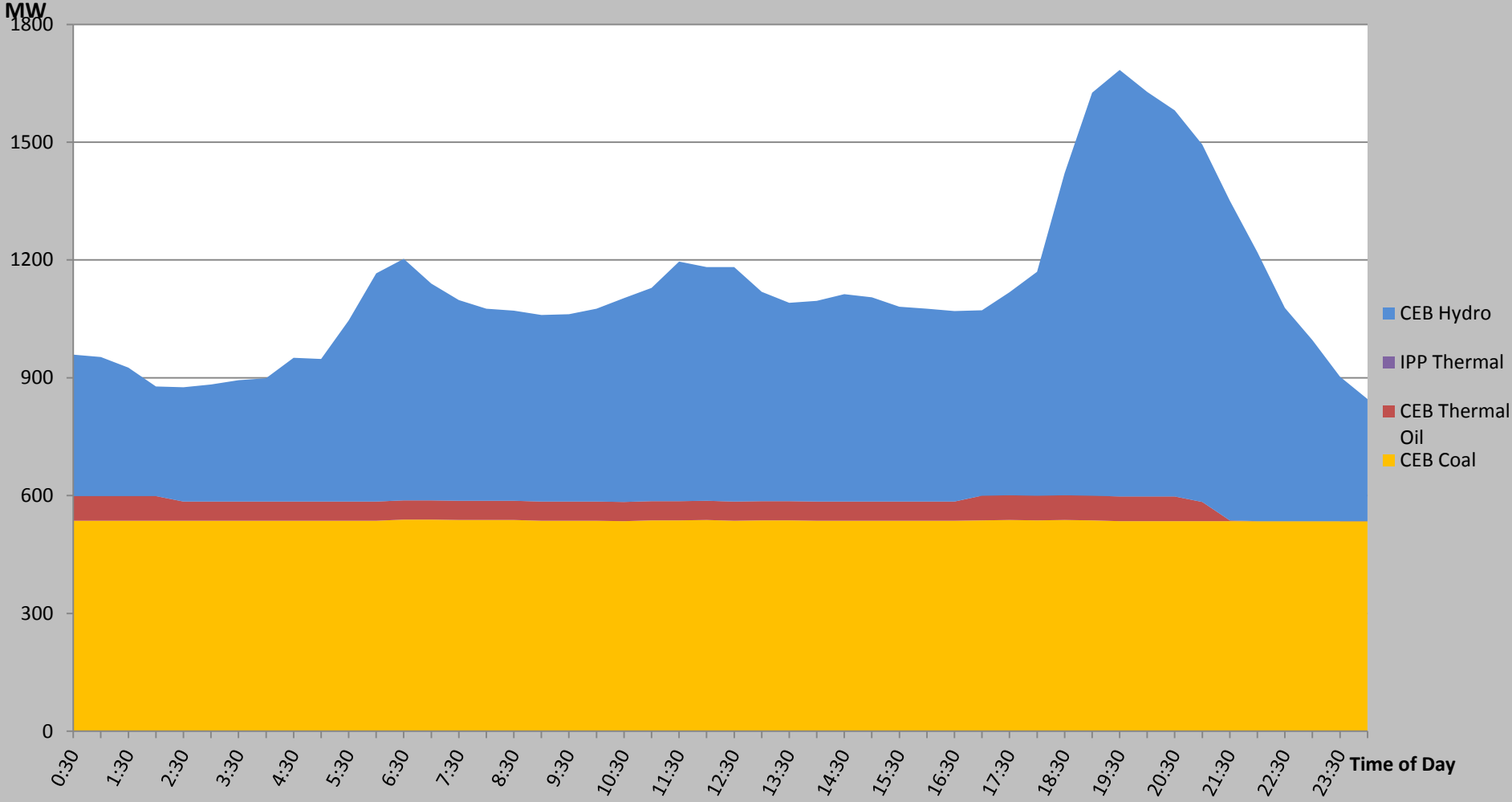


Note: Contribution from Mini Hydro, Solar and Biomass is not included



Note: Generation from SPP Mini Hydro, Solar and Biomass is not included

Load Curve for 12th June 2016



List of Power Stations

Power Station	Capacity (MW)	Primary Fuel
CEB Hydro		
Victoria	210	
Ukuwela	40	
Kotmale	201	
Randenigala	122	
Rantambe	49	
Bowatenna	40	
Nilambe	3.2	
Upper Kotmale	150	
Old Laxapana	50	
New Laxapana	115	
Polpitiya	75	
Wimalasurendra	50	
Canyon	60	
Samanalawewa	120	
Kukuleganga	75	
Inginiyagala	10	
Udawalawe	6	
CEB Thermal		
Sapugaskanda 1	72	Heavy Fuel
Sapugaskanda 2	72	Heavy Fuel
Kelanitissa Small Gas Turbines	68	Auto Diesel
GT 7 - Kelanitissa	115	Auto Diesel
Kelanitissa CCY	165	Naptha & Diesel
Lakvijaya (Puttalam Coal)	285	Coal
Lakvijaya (Puttalam Coal) Stage II	285	Coal
Lakvijaya (Puttalam Coal) Stage III	285	Coal
Uthuru Janani	24	Heavy Fuel
Barge CEB	60	Furnace Oil
Private Thermal (IPPs)		
Asia Power	51	Heavy Fuel
Sojitz - Kelanitissa	163	Auto Diesel
West Coast	270	Low Sulphur Furnace oil
Northern Power	27	Auto Diesel
ACE Embilipitiya	100	Furnace Oil