

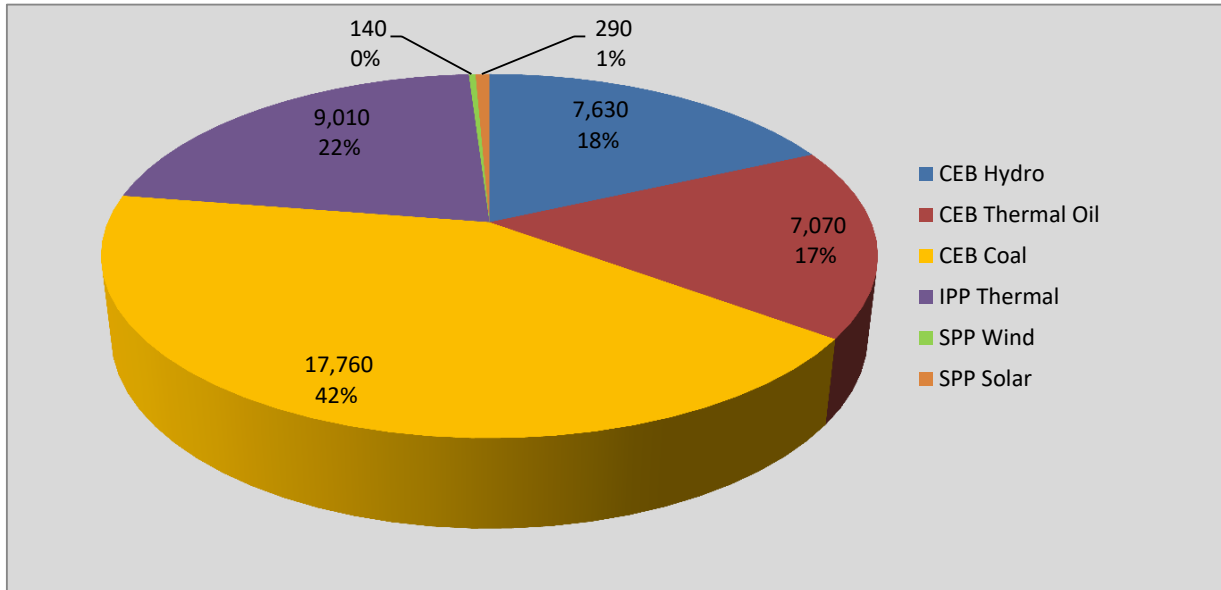
Generation and Reservoirs Statistics

April 27, 2018



PUBLIC UTILITIES COMMISSION OF SRI LANKA

Daily Generation Mix in MWh



Total Generation 41,893 MWh

Note: Generation from other SPPs (Mini Hydro, small scale Solar and Biomass) is not included

Cumulative Dispatch

For Current Month

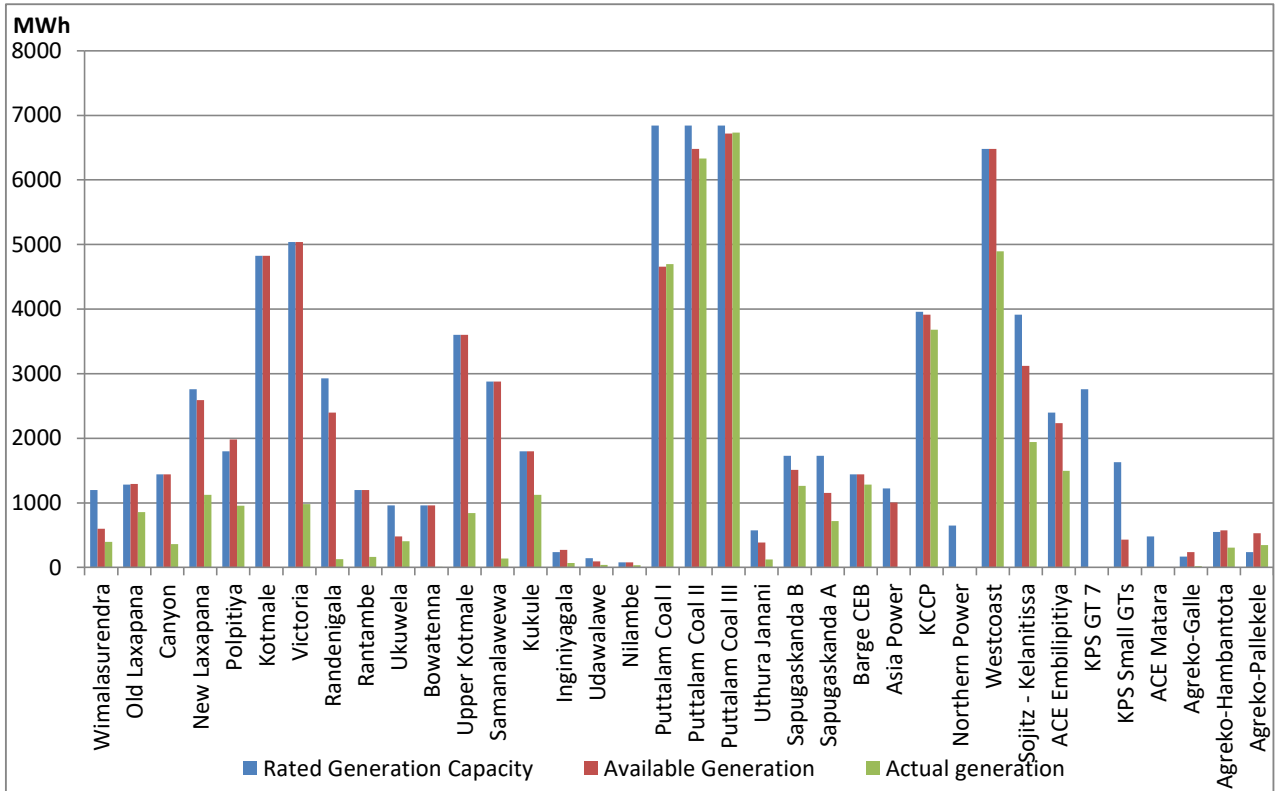
Category	Dispatch (MWh)	Percentage
CEB Hydro	220,625.0	21.41%
CEB Thermal Oil	192,168.0	18.65%
CEB Coal	383,412.0	37.20%
IPP Thermal	221,707.0	21.51%
SPP Wind& Solar	12,697.0	1.23%
Total	1,030,609.0	

For Current Year

Category	Dispatch (GWh)	Percentage
CEB Hydro	876	18.97%
CEB Thermal Oil	954	20.67%
CEB Coal	1,818	39.39%
IPP Thermal	882	19.11%
Renewable	85	1.85%
Total	4,615	

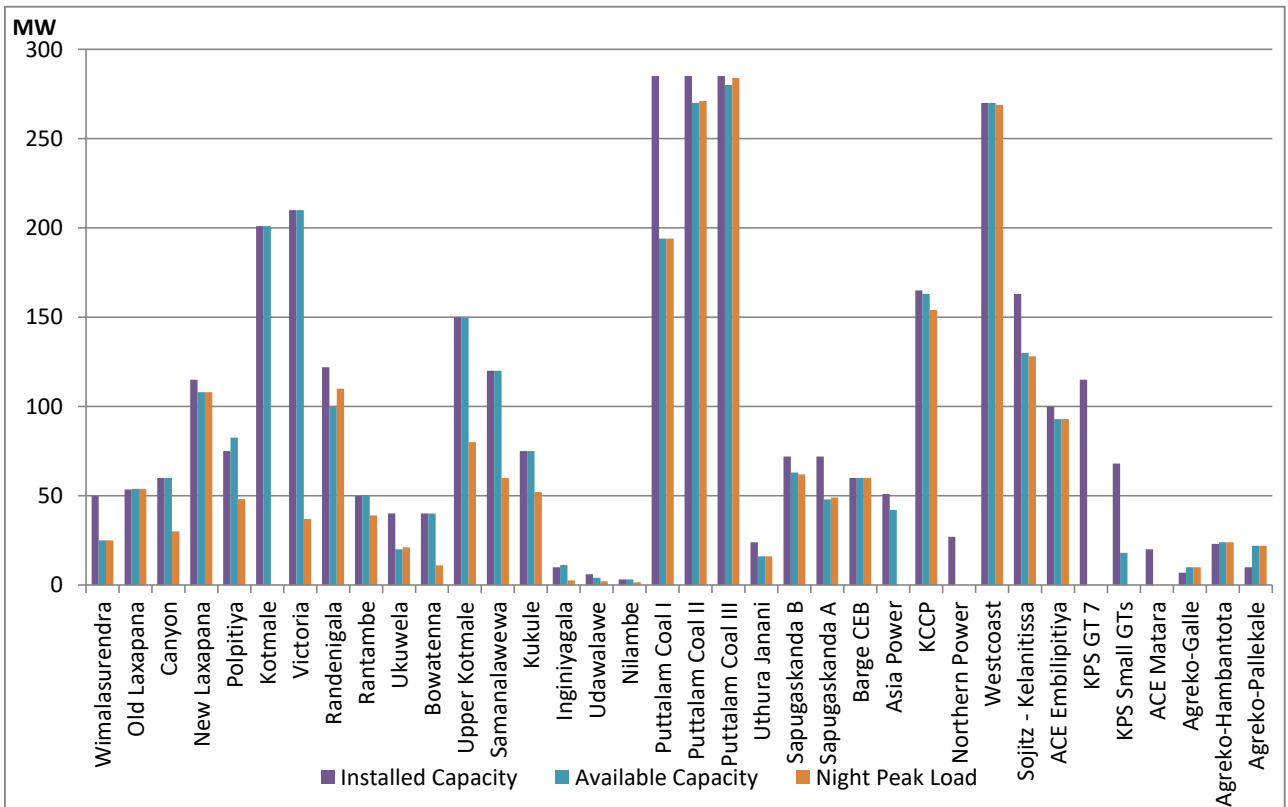
*Renewable figure does not include the Minihydro, Biomass and small scale SPP solar plants contribution during the last 3 months.

Plant Dispatch on April 27, 2018



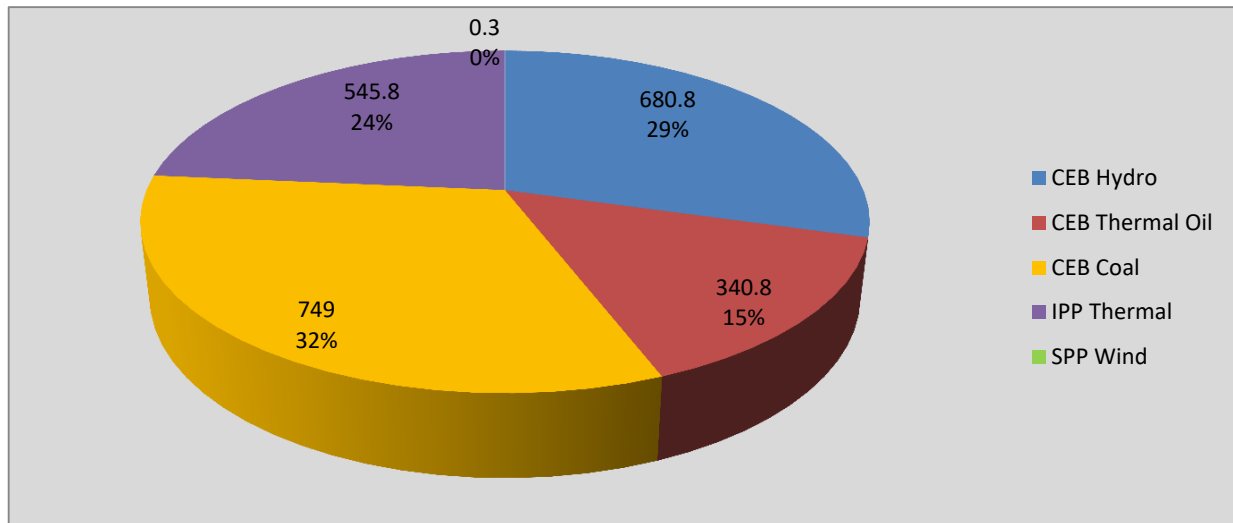
Note- Available Generation is estimated based on plant availability at 6.00am on April 28, 2018

Plant Loading at Night Peak on April 27, 2018



Note- Plant availability is recorded at 6.00 am on April 28, 2018

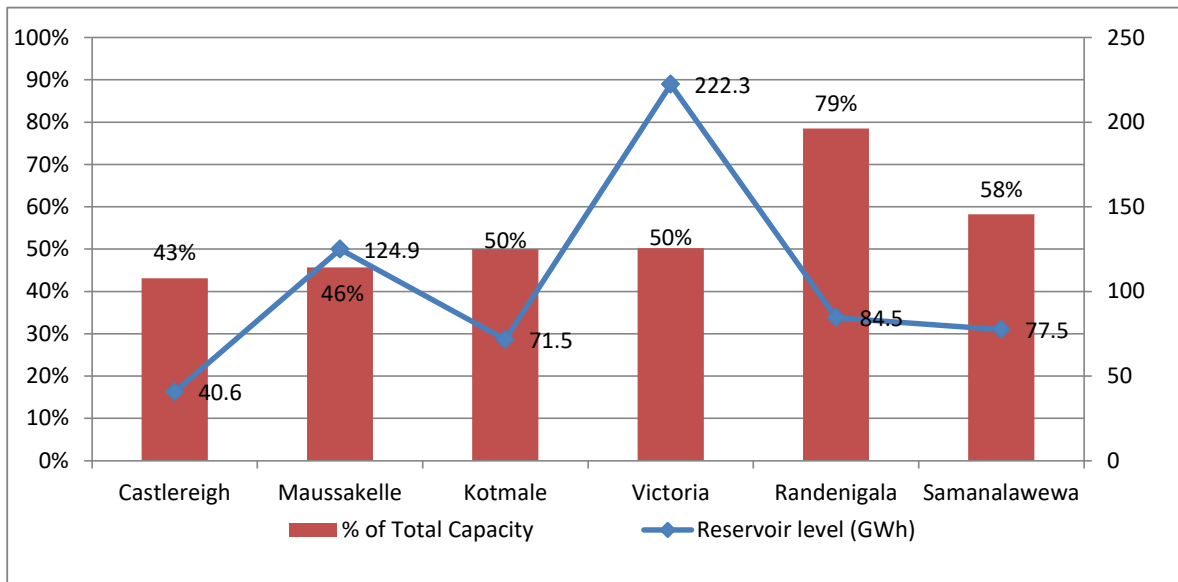
Contribution to the Night Peak in MW



Night Peak	2,316.7 MW
Day Peak	2,134.1 MW
Minimum Demand	1,153.8 MW

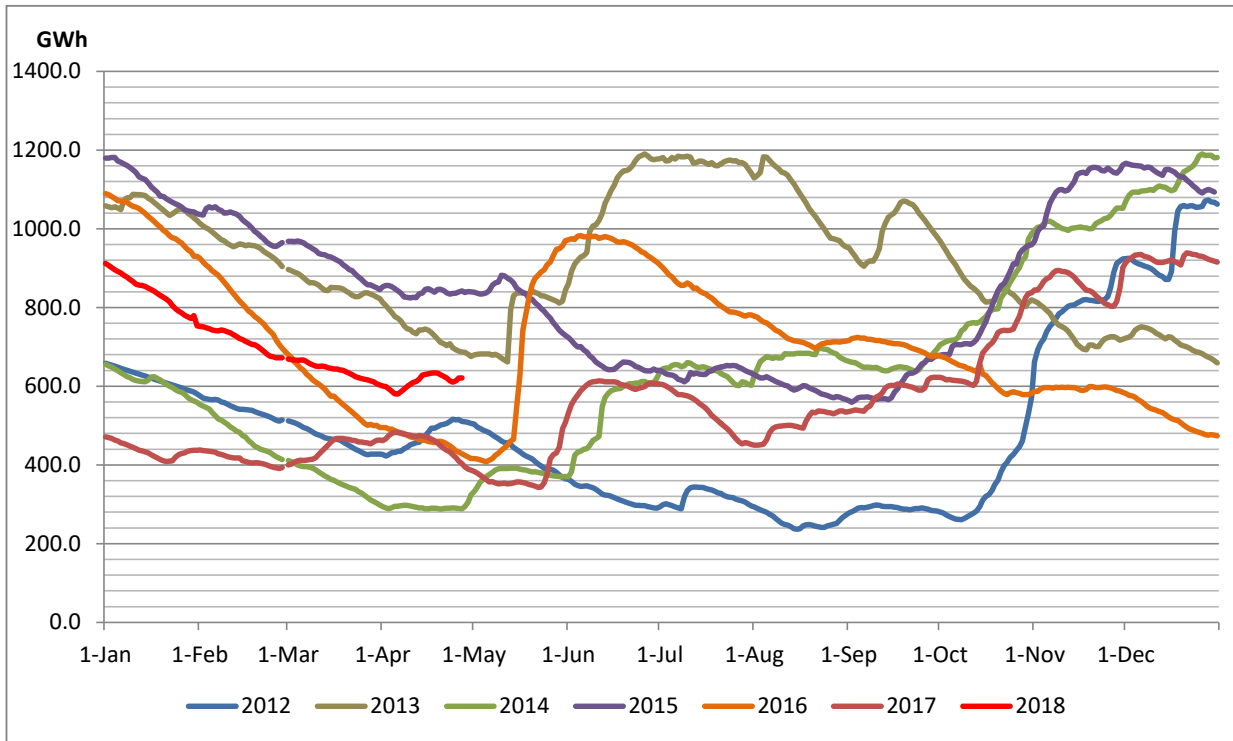
Note: Contribution from other SPPs (Mini Hydro, Solar and Biomass) is not included

Reservoir Levels - as at 06.00 Hr on April 28, 2018

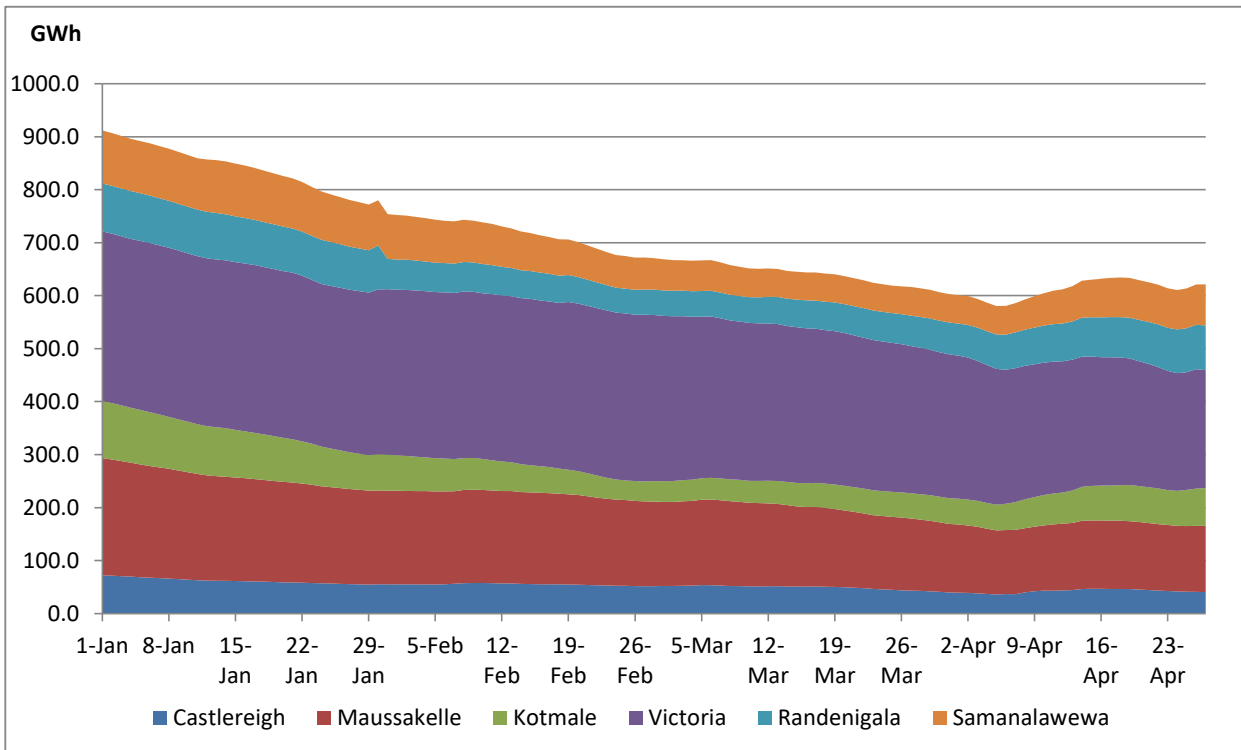


Total Reservoir Level(GWh)	621.3
% of Total capacity	52.0%

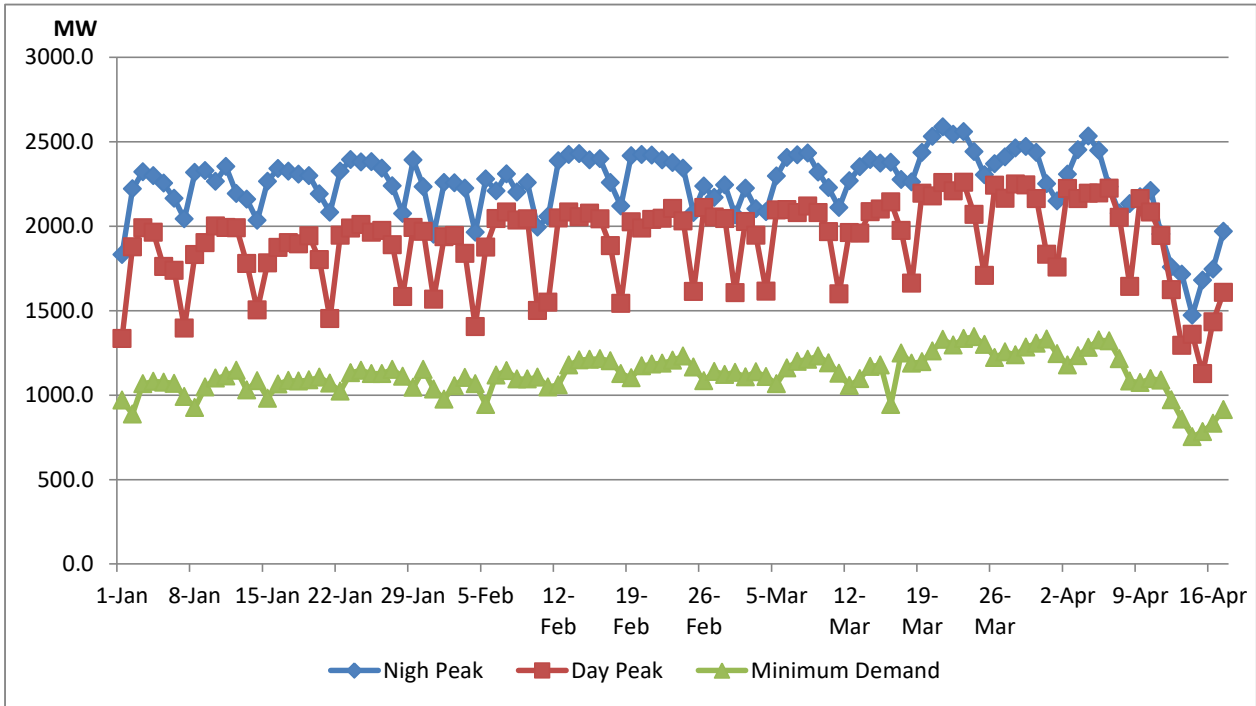
Comparison of Total Reservoir Storage Levels with Past Years



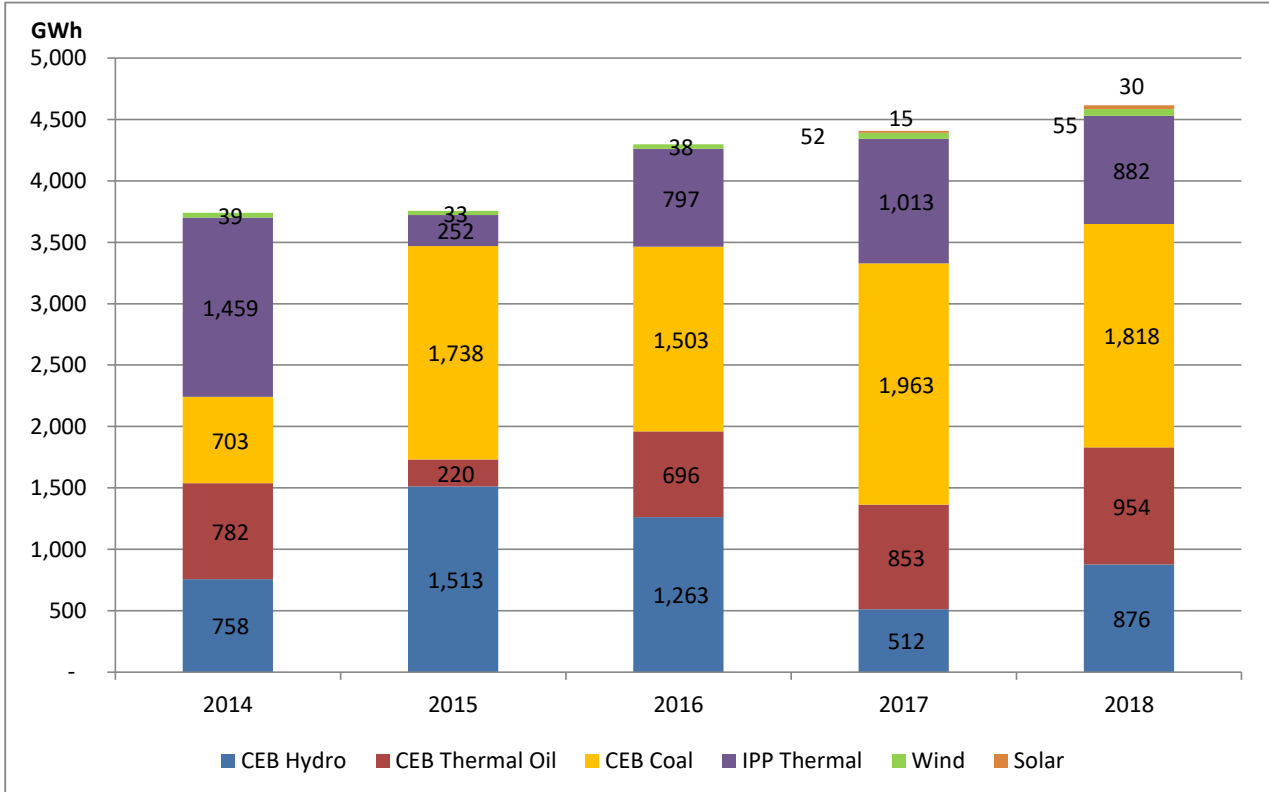
Variation of Major Hydro Reservoir Levels in GWh- 2017



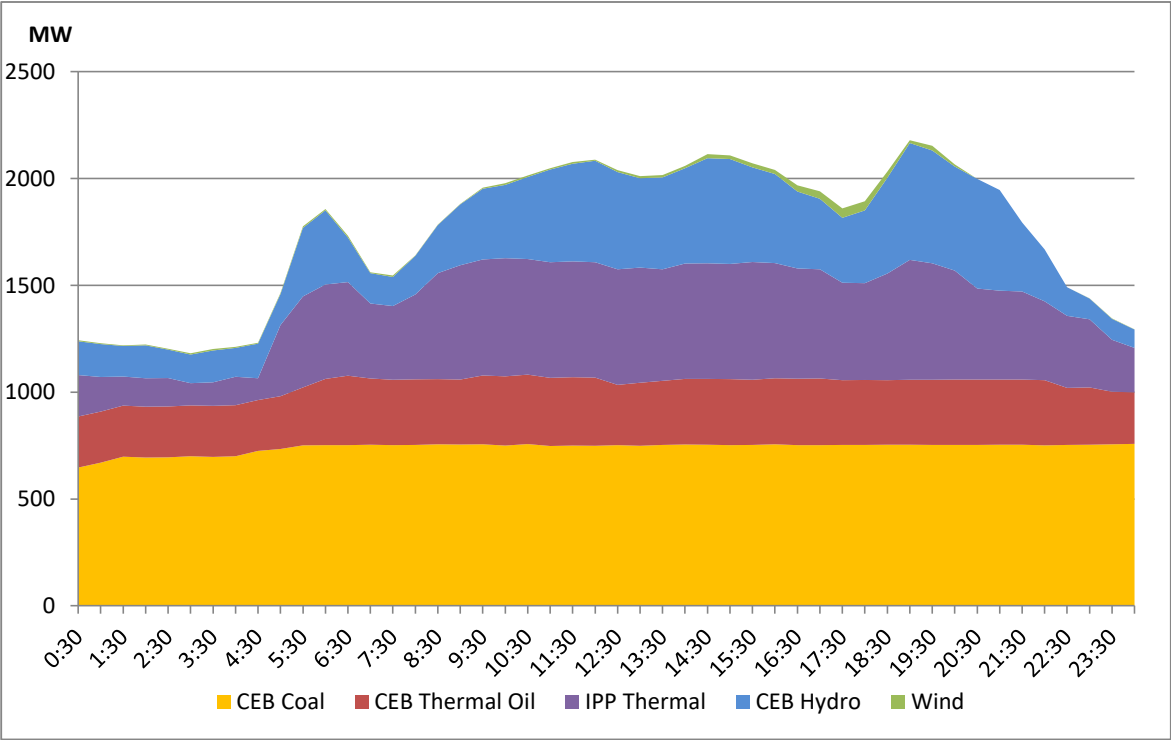
Variation of Demand



Comparison of Cumulative Dispatch



Daily Load Curve - April 26, 2018



Power Station	Capacity (MW)	Primary Fuel
CEB Hydro		
Victoria	210	
Ukuwela	40	
Kotmale	201	
Randenigala	122	
Rantambe	49	
Bowatenna	40	
Nilambe	3.2	
Upper Kotmale	150	
Old Laxapana	50	
New Laxapana	115	
Polpitiya	75	
Wimalasurendra	50	
Canyon	60	
Samanalawewa	120	
Kukuleganga	75	
Inginiyagala	10	
Udawalawe	6	
CEB Thermal		
Sapugaskanda 1	72	Heavy Fuel
Sapugaskanda 2	72	Heavy Fuel
Kelanitissa Small Gas Turb	68	Auto Diesel
GT 7 - Kelanitissa	115	Auto Diesel
Kelanitissa CCY	165	Naptha & Diesel
Lakvijaya (Puttalam Coal)	285	Coal
Lakvijaya (Puttalam Coal)	285	Coal
Lakvijaya (Puttalam Coal)	285	Coal
Uthuru Janani	24	Heavy Fuel
Barge CEB	60	Furnace Oil
Private Thermal (IPPs)		
Asia Power	51	Heavy Fuel
Sojitz - Kelanitissa	163	Auto Diesel
West Coast	270	Low Sulphur Furnace oil
Northern Power	27	Auto Diesel
ACE Embilipitiya	100	Furnace Oil