

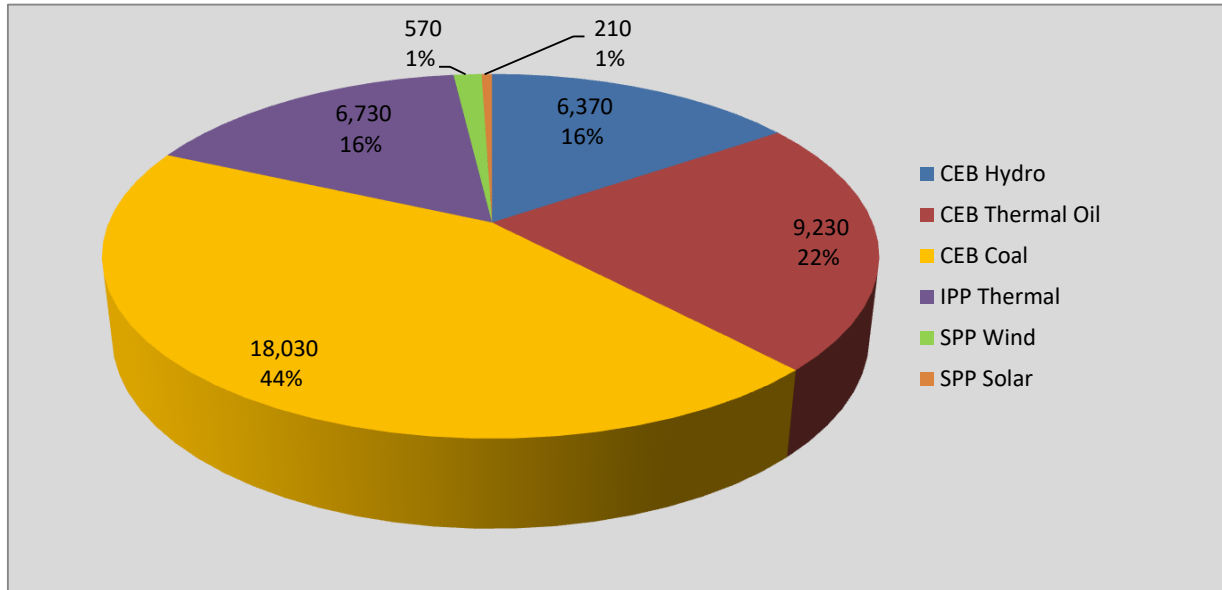
# **Generation and Reservoirs Statistics**

**February 26, 2018**



PUBLIC UTILITIES COMMISSION OF SRI LANKA

## Daily Generation Mix in MWh



**Total Generation 41,140 MWh**

Note: Generation from other SPPs (Mini Hydro, small scale Solar and Biomass) is not included

## Cumulative Dispatch

### For Current Month

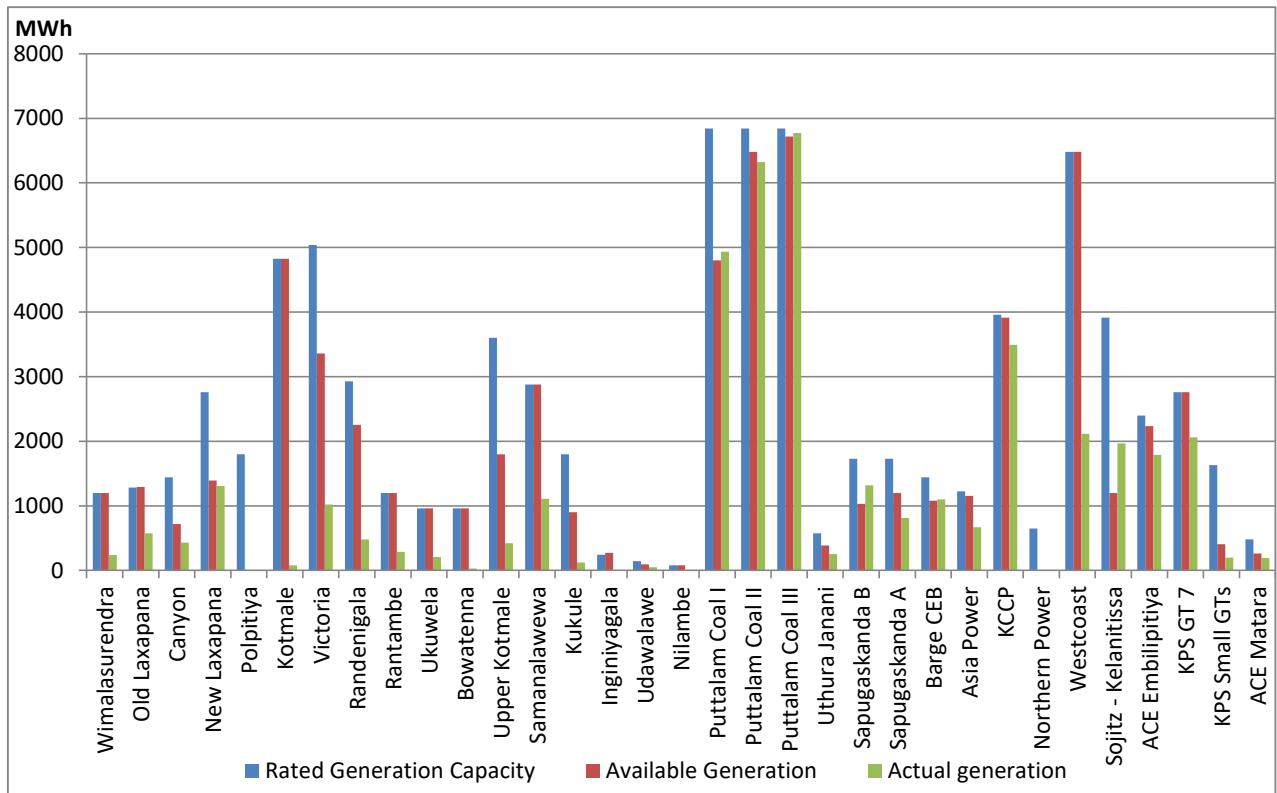
Category	Dispatch (MWh)	Percentage
CEB Hydro	168,152.0	16.30%
CEB Thermal Oil	211,263.0	20.48%
CEB Coal	457,007.0	44.30%
IPP Thermal	169,485.0	16.43%
SPP Wind& Solar	25,779.0	2.50%
<b>Total</b>	<b>1,031,686.0</b>	

### For Current Year

Category	Dispatch (GWh)	Percentage
CEB Hydro	434	19.60%
CEB Thermal Oil	485	21.89%
CEB Coal	847	38.29%
IPP Thermal	398	17.97%
Renewable	50	2.25%
<b>Total</b>	<b>2,213</b>	

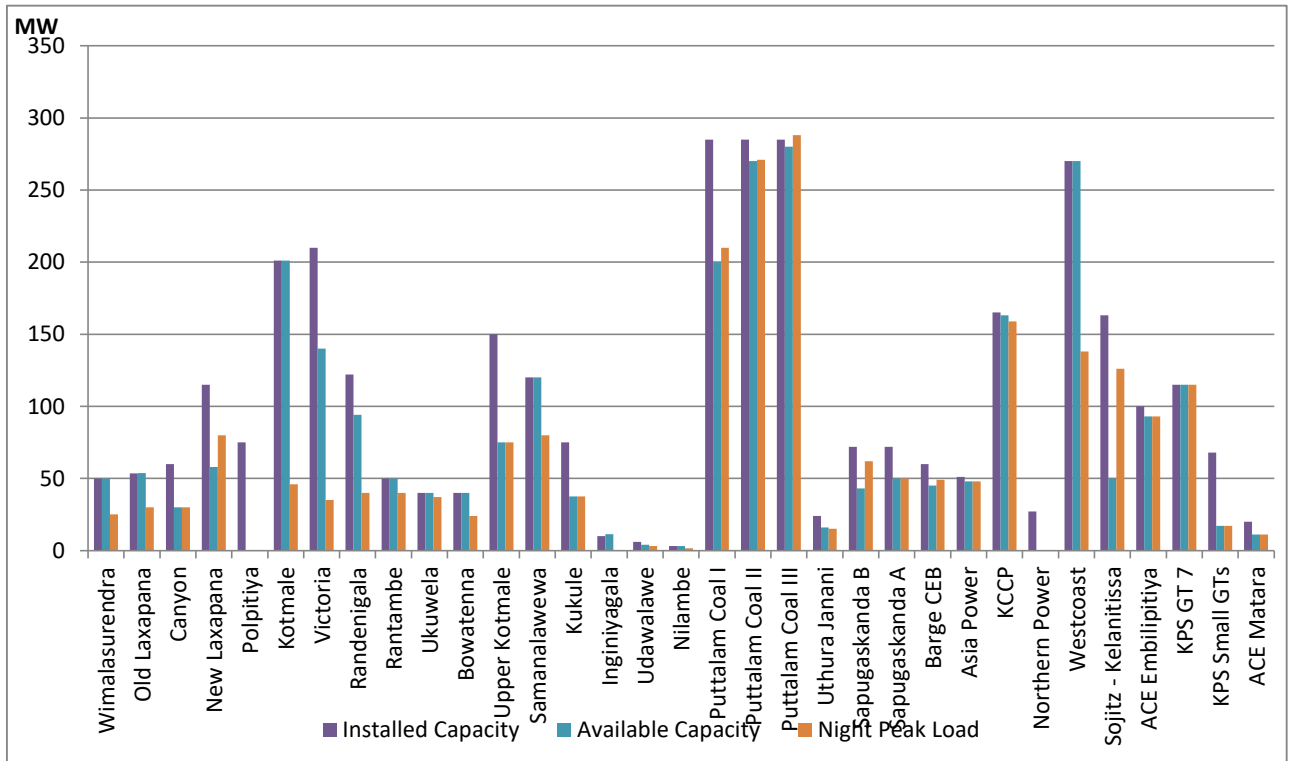
\*Renewable figure does not include the Minihydro, Biomass and small scale SPP solar plants contribution during the last two months.

## Plant Dispatch on February 26, 2018



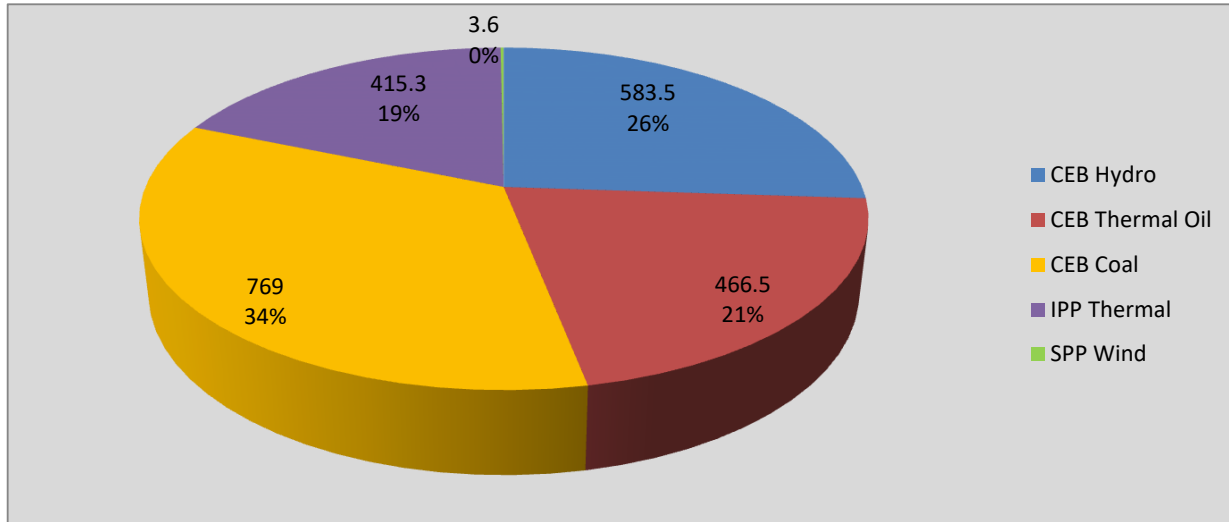
Note- Available Generation is estimated based on plant availability at 6.00am on February 27, 2018

## Plant Loading at Night Peak on February 26, 2018



Note- Plant availability is recorded at 6.00 am on February 27, 2018

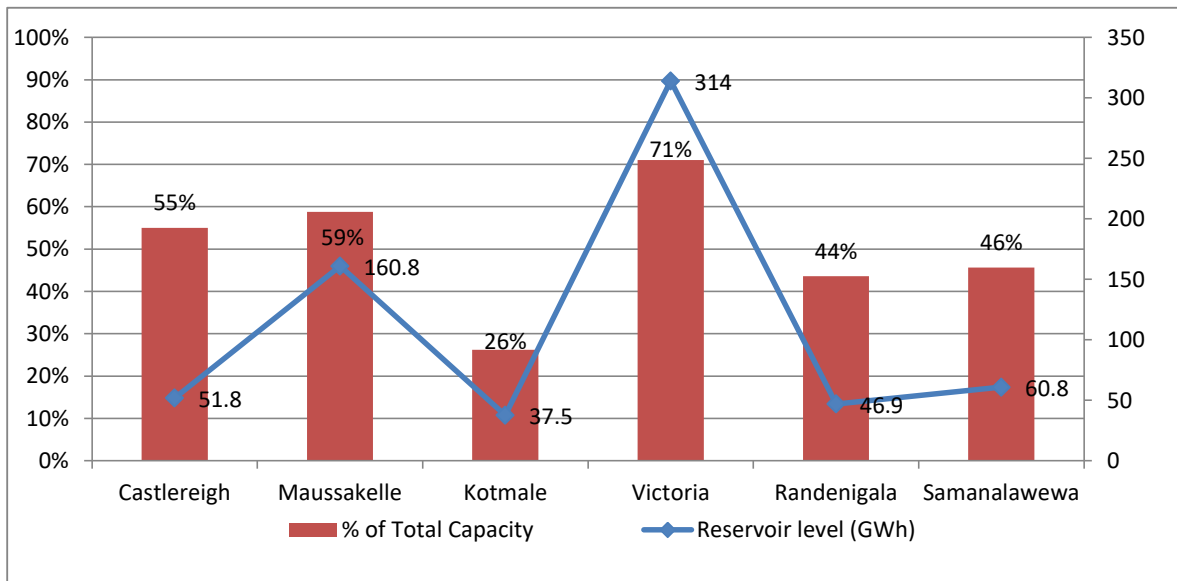
## Contribution to the Night Peak in MW



Night Peak	2,237.9 MW
Day Peak	2,110.2 MW
Minimum Demand	1,083.8 MW

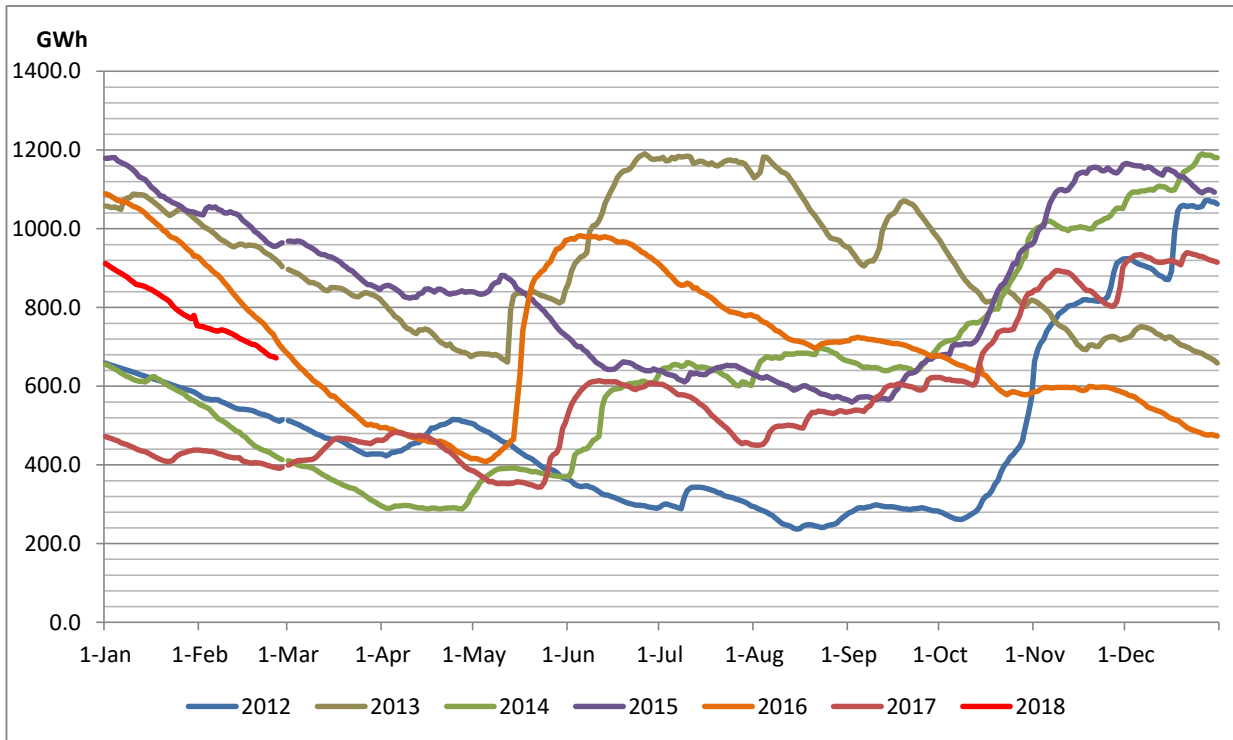
**Note:** Contribution from other SPPs (Mini Hydro, Solar and Biomass) is not included

## Reservoir Levels - as at 06.00 Hr on February 27, 2018

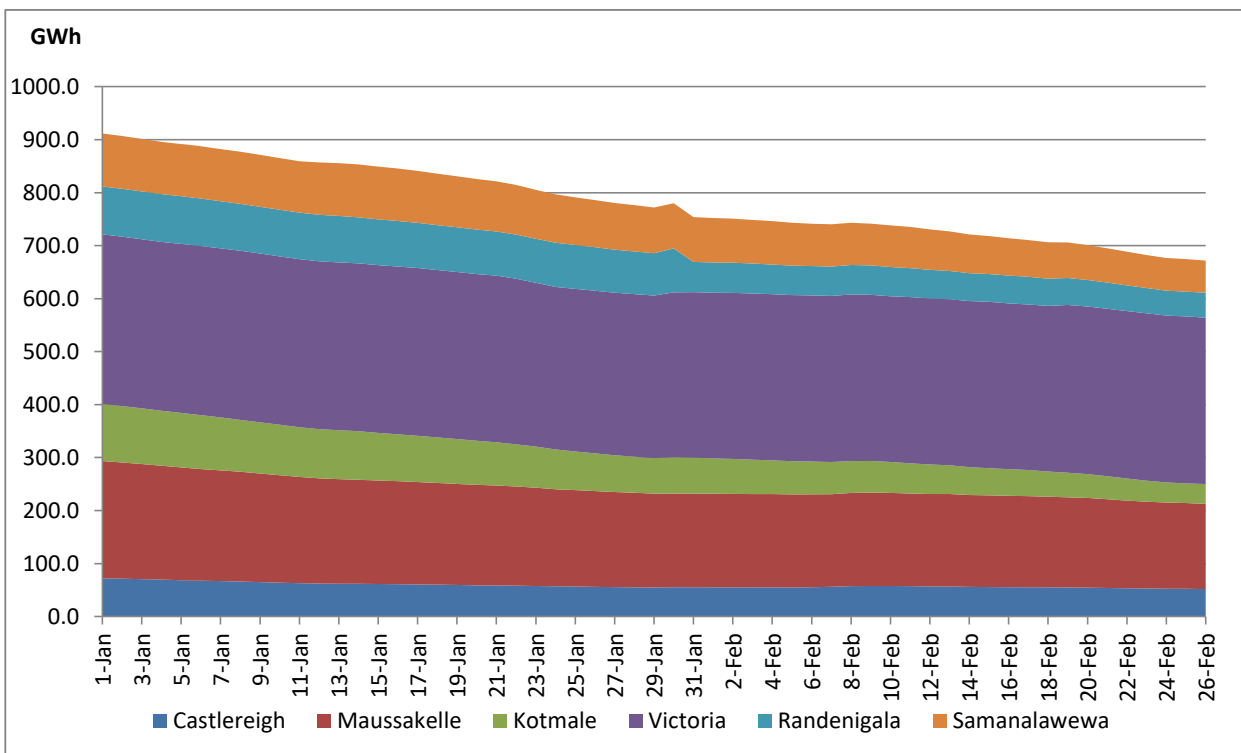


Total Reservoir Level(GWh)	671.9
% of Total capacity	56.3%

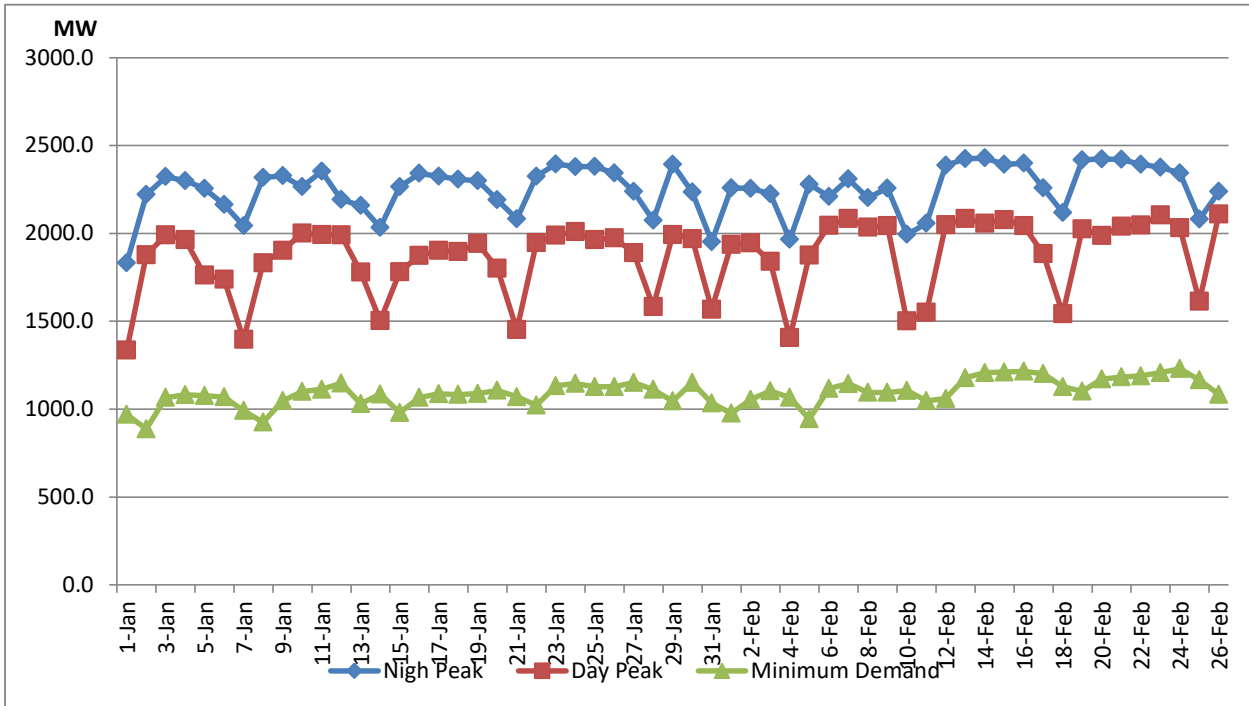
## Comparison of Total Reservoir Storage Levels with Past Years



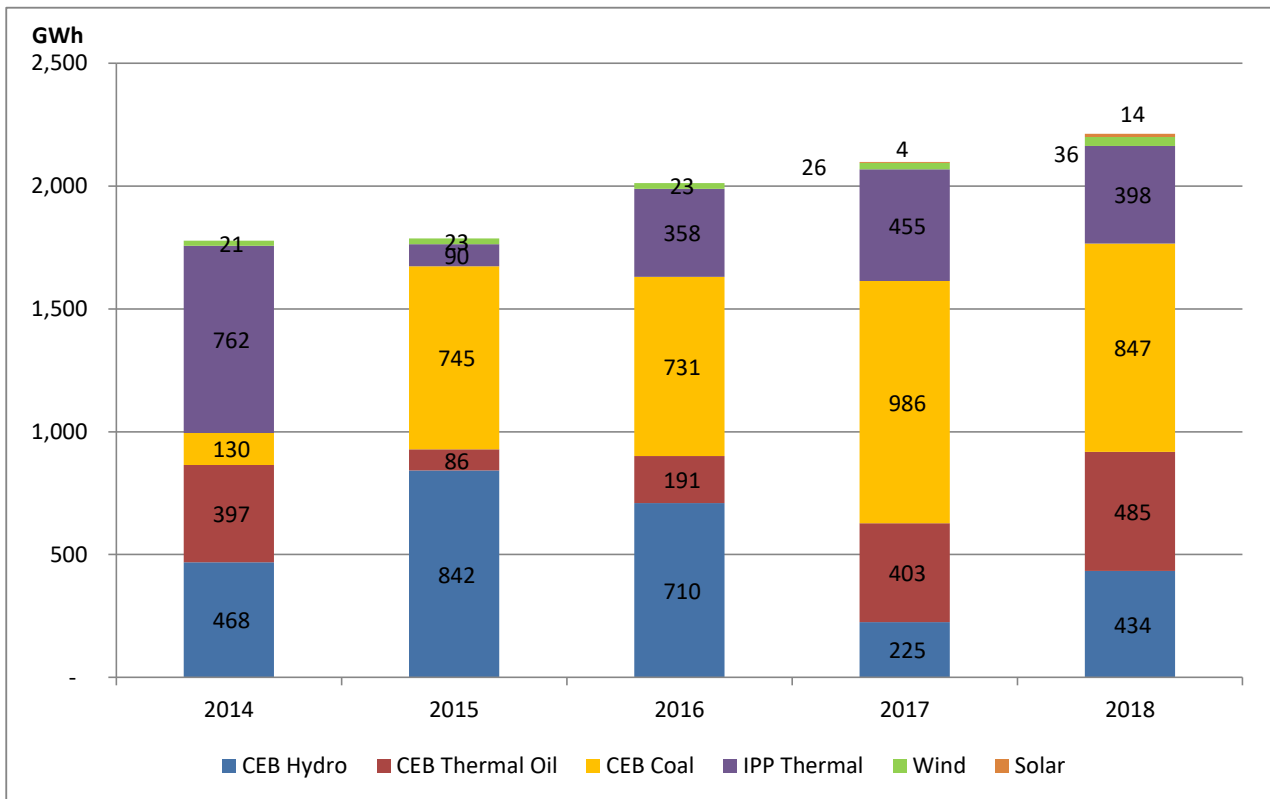
## Variation of Major Hydro Reservoir Levels in GWh- 2017



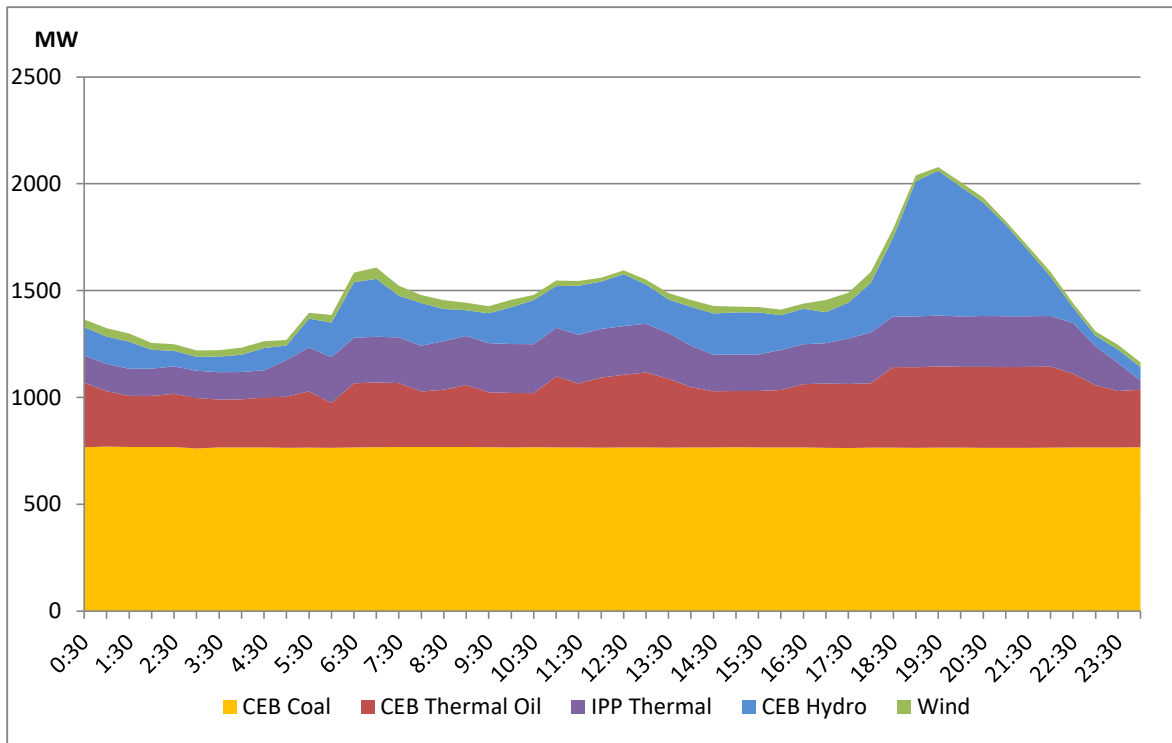
## Variation of Demand



## Comparison of Cumulative Dispatch



## Daily Load Curve - February 25, 2018



Power Station	Capacity (MW)	Primary Fuel
<b>CEB Hydro</b>		
Victoria	210	
Ukuwela	40	
Kotmale	201	
Randenigala	122	
Rantambe	49	
Bowatenna	40	
Nilambe	3.2	
Upper Kotmale	150	
Old Laxapana	50	
New Laxapana	115	
Polpitiya	75	
Wimalasurendra	50	
Canyon	60	
Samanalawewa	120	
Kukuleganga	75	
Inginiyagala	10	
Udawalawe	6	
<b>CEB Thermal</b>		
Sapugaskanda 1	72	Heavy Fuel
Sapugaskanda 2	72	Heavy Fuel
Kelanitissa Small Gas Turb	68	Auto Diesel
GT 7 - Kelanitissa	115	Auto Diesel
Kelanitissa CCY	165	Naptha & Diesel
Lakvijaya (Puttalam Coal)	285	Coal
Lakvijaya (Puttalam Coal)	285	Coal
Lakvijaya (Puttalam Coal)	285	Coal
Uthuru Janani	24	Heavy Fuel
Barge CEB	60	Furnace Oil
<b>Private Thermal (IPPs)</b>		
Asia Power	51	Heavy Fuel
Sojitz - Kelanitissa	163	Auto Diesel
West Coast	270	Low Sulphur Furnace oil
Northern Power	27	Auto Diesel
ACE Embilipitiya	100	Furnace Oil