

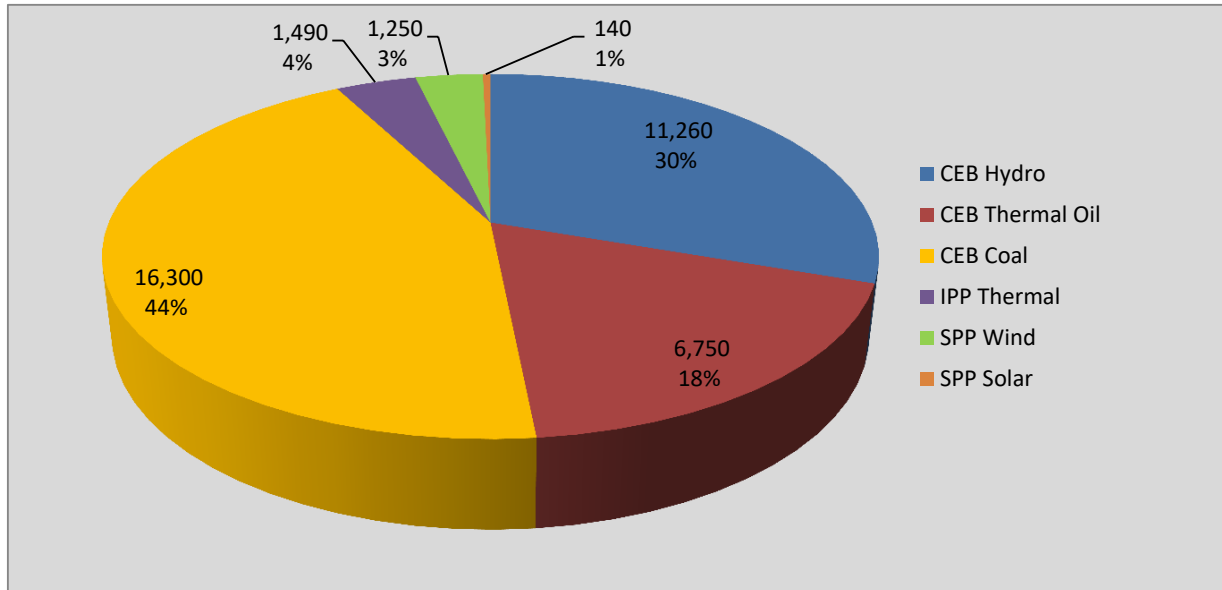
# **Generation and Reservoirs Statistics**

**October 19, 2017**



PUBLIC UTILITIES COMMISSION OF SRI LANKA

## Daily Generation Mix in MWh



**Total Generation 37,190 MWh**

Note: Generation from other SPPs (Mini Hydro, small scale Solar and Biomass) is not included

## Cumulative Dispatch

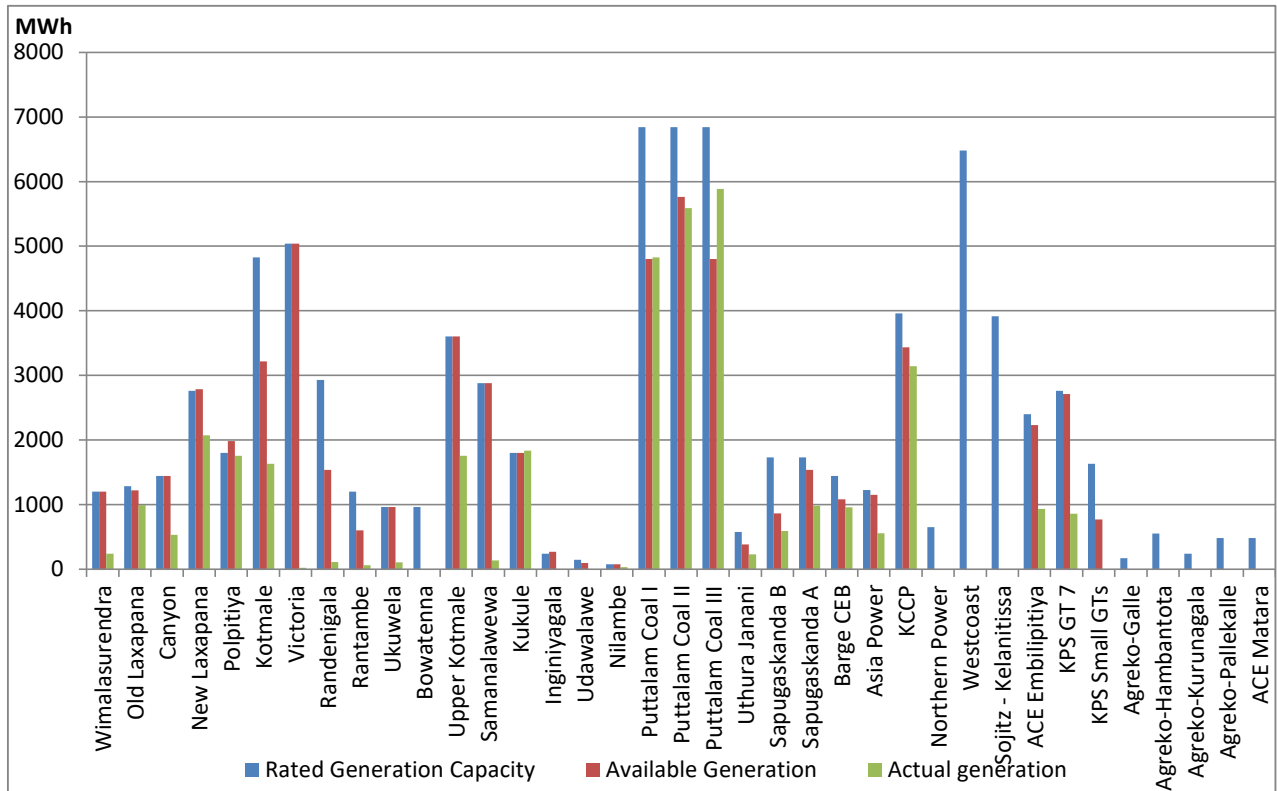
### For Current Month

Category	Dispatch (MWh)	Percentage
CEB Hydro	203,900.0	29.03%
CEB Thermal Oil	121,880.0	17.35%
CEB Coal	283,495.0	40.36%
IPP Thermal	65,438.0	9.32%
SPP Wind& Solar	27,686.0	3.94%
<b>Total</b>	<b>702,399.0</b>	

### For Current Year

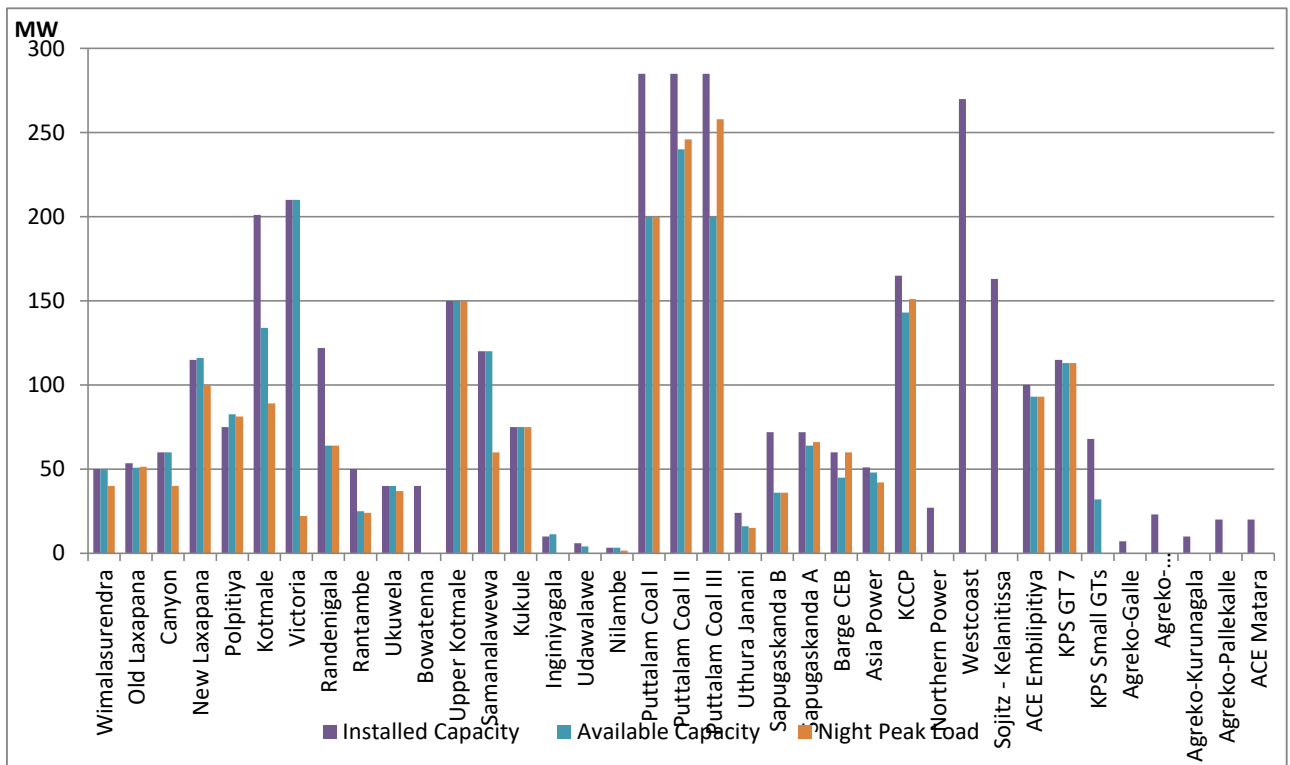
Category	Dispatch (GWh)	Percentage
CEB Hydro	2,047	17.74%
CEB Thermal Oil	2,118	18.35%
CEB Coal	4,395	38.08%
IPP Thermal	2,168	18.78%
Renewable	813	7.04%
<b>Total</b>	<b>11,541</b>	

## Plant Dispatch on October 19, 2017



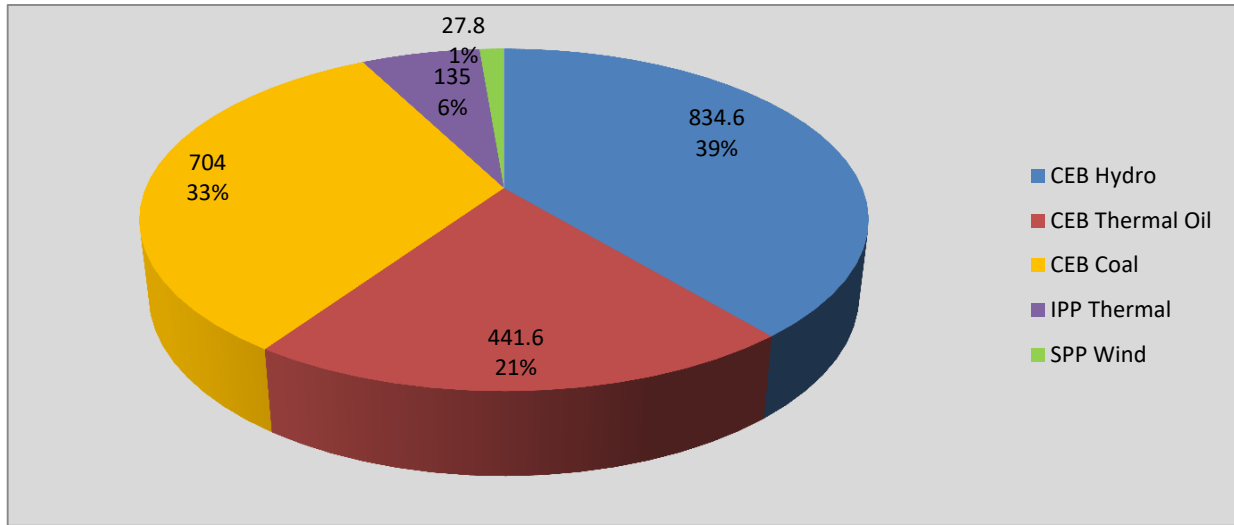
Note- Available Generation is estimated based on plant availability at 6.00am on October 20, 2017

## Plant Loading at Night Peak on October 19, 2017



Note- Plant availability is recorded at 6.00 am on October 20, 2017

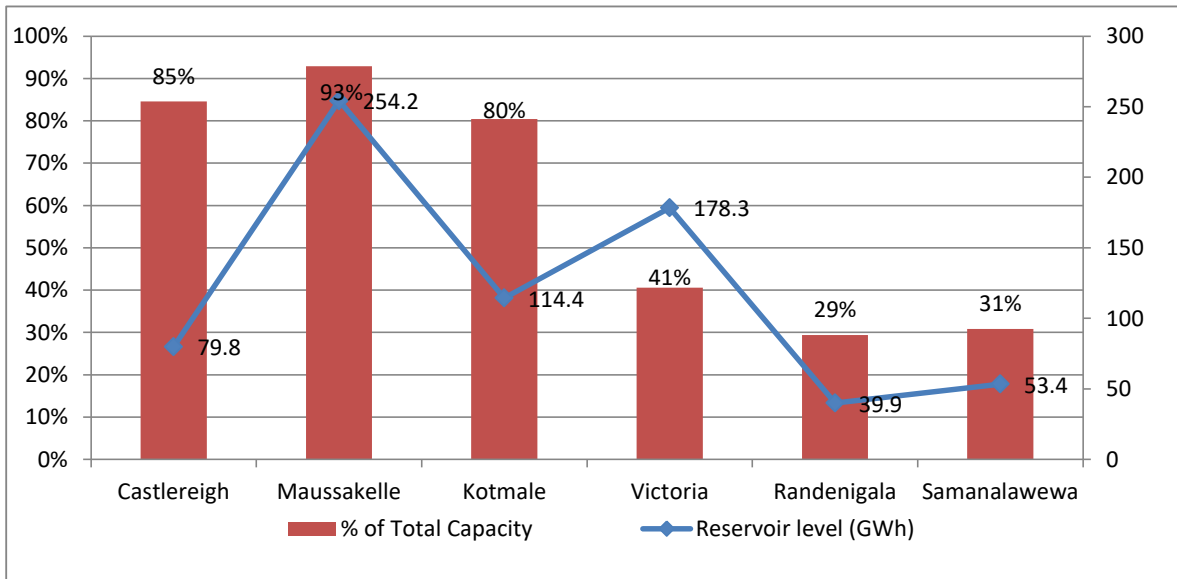
## Contribution to the Night Peak in MW



Night Peak	2,143.0 MW
Day Peak	1,837.5 MW
Minimum Demand	1,018.3 MW

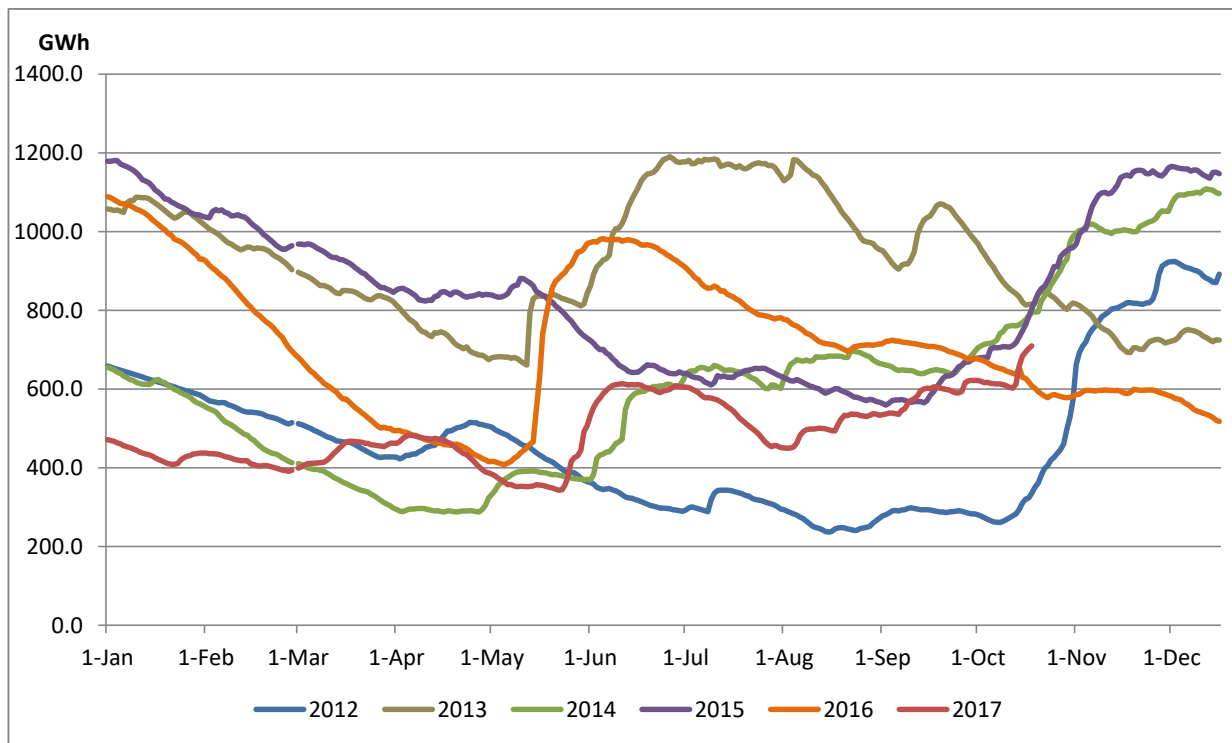
**Note:** Contribution from other SPPs (Mini Hydro, Solar and Biomass) is not included

## Reservoir Levels - as at 06.00 Hr on October 20, 2017

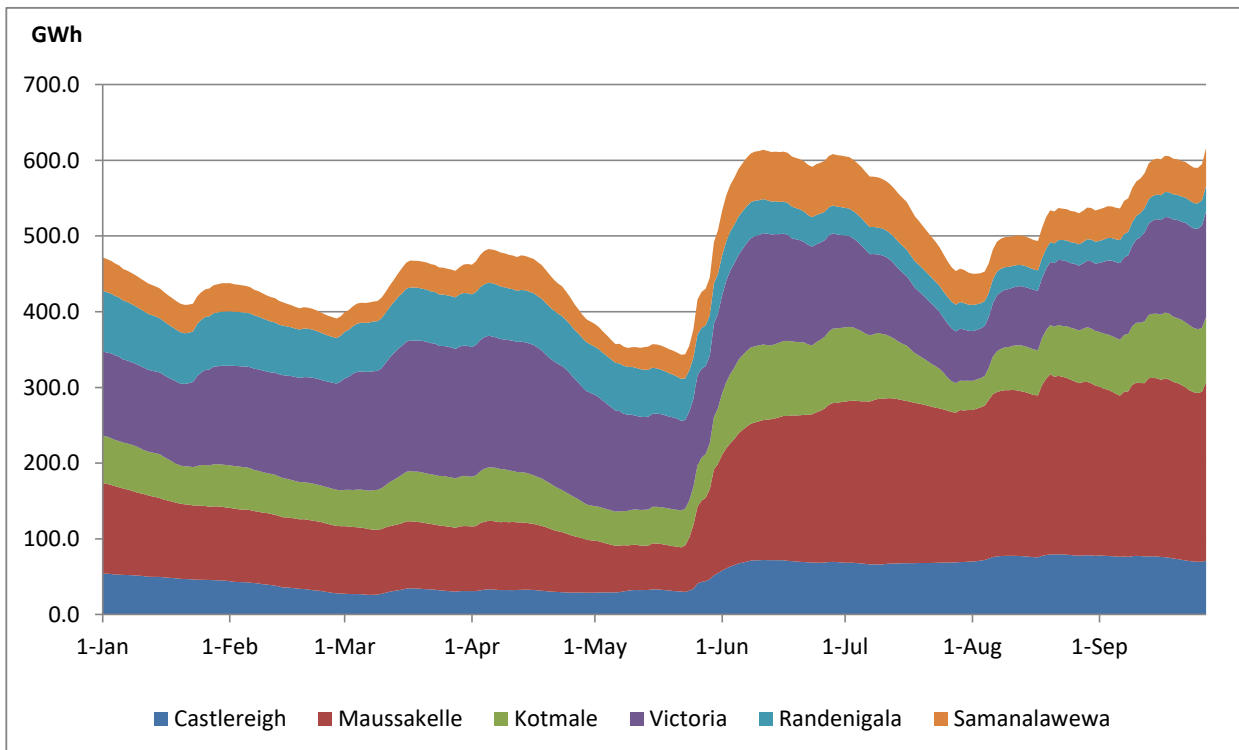


Total Reservoir Level(GWh)	719.9
% of Total capacity	57.2%

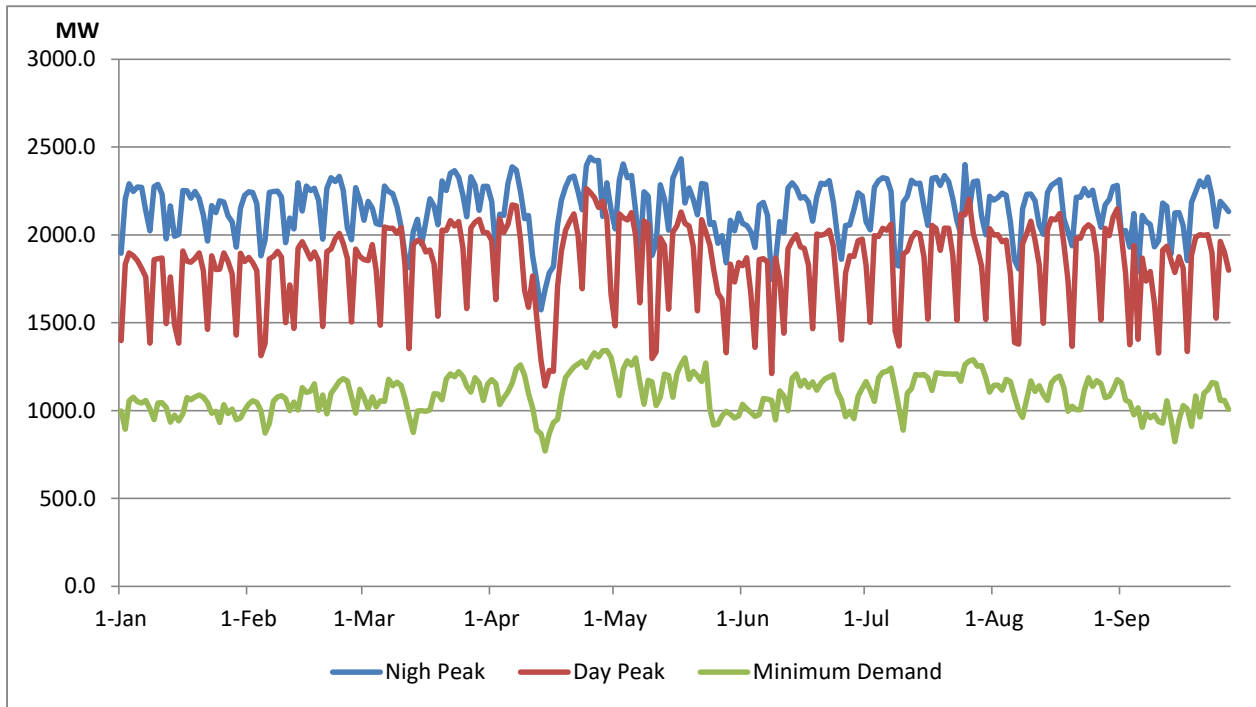
### Comparison of Total Reservoir Storage Levels with Past Years



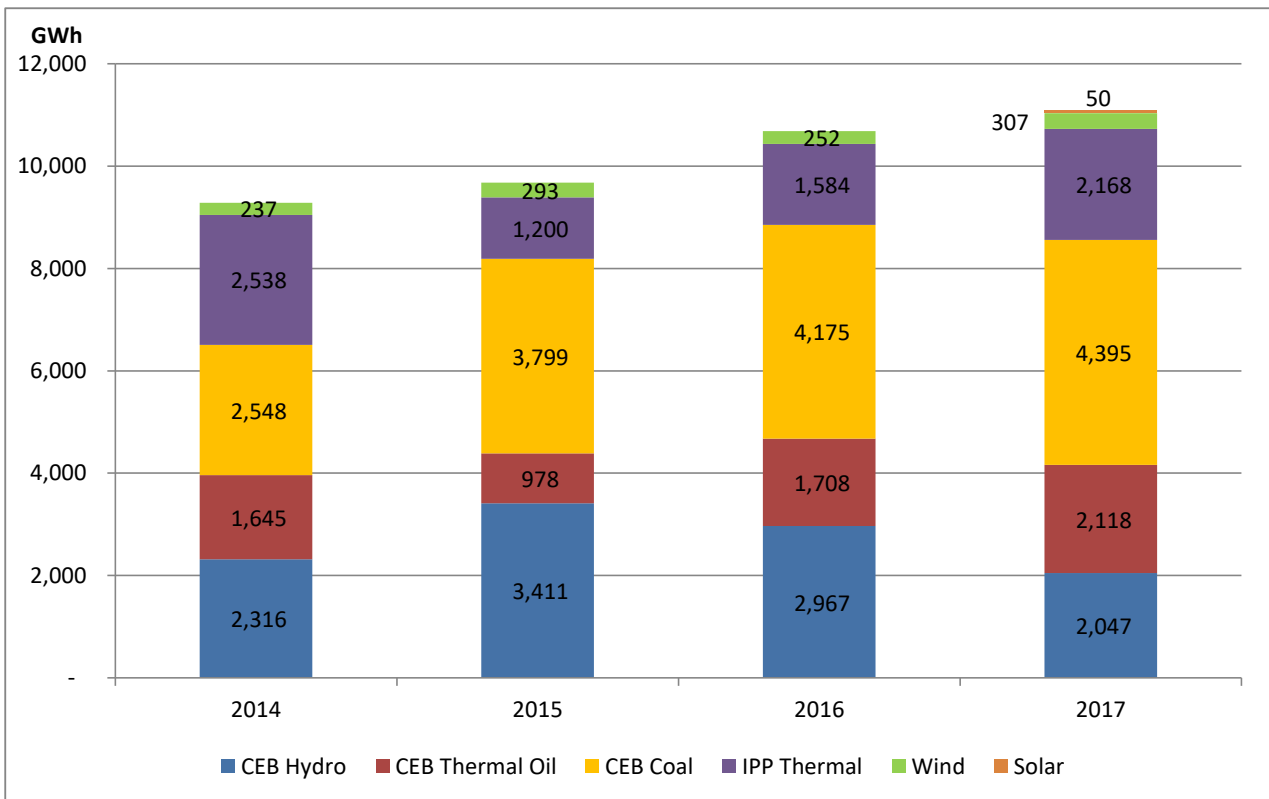
### Variation of Major Hydro Reservoir Levels in GWh- 2017



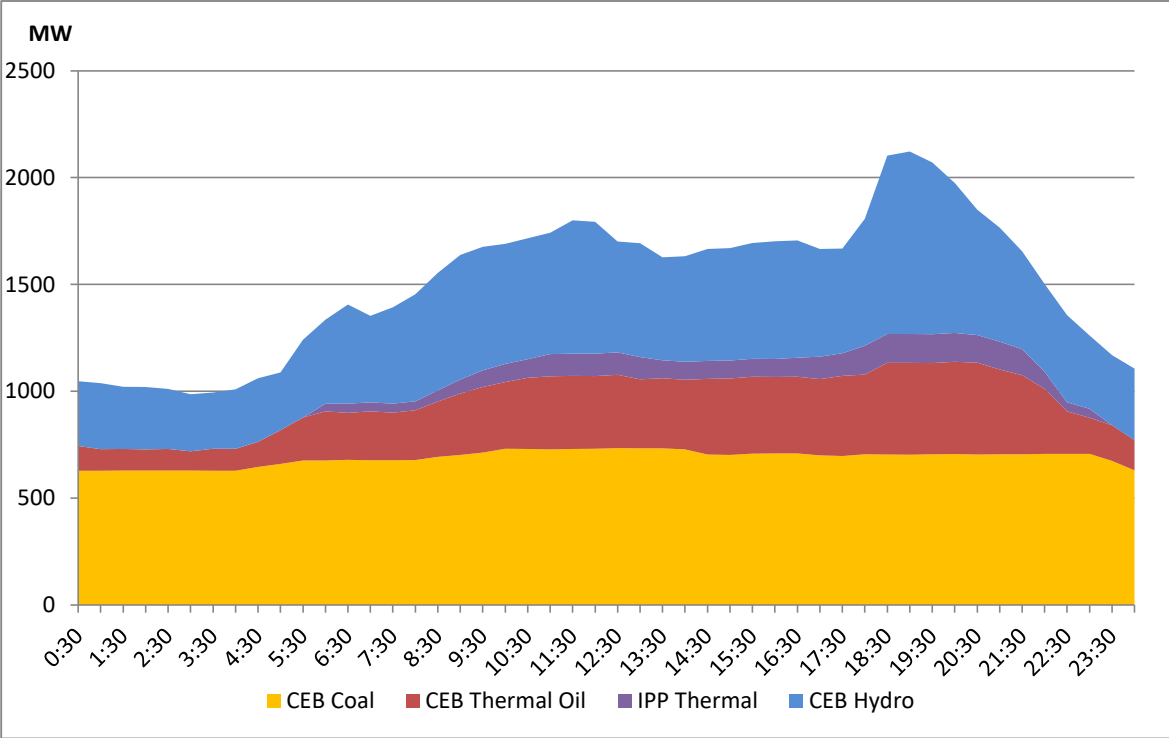
## Variation of Demand 2017



## Comparison of Cumulative Dispatch



# Daily Load Curve - October 18, 2017



Power Station	Capacity (MW)	Primary Fuel
<b>CEB Hydro</b>		
Victoria	210	
Ukuwela	40	
Kotmale	201	
Randenigala	122	
Rantambe	49	
Bowatenna	40	
Nilambe	3.2	
Upper Kotmale	150	
Old Laxapana	50	
New Laxapana	115	
Polpitiya	75	
Wimalasurendra	50	
Canyon	60	
Samanalawewa	120	
Kukuleganga	75	
Inginiyagala	10	
Udawalawe	6	
<b>CEB Thermal</b>		
Sapugaskanda 1	72	Heavy Fuel
Sapugaskanda 2	72	Heavy Fuel
Kelanitissa Small Gas Turb	68	Auto Diesel
GT 7 - Kelanitissa	115	Auto Diesel
Kelanitissa CCY	165	Naptha & Diesel
Lakvijaya (Puttalam Coal)	285	Coal
Lakvijaya (Puttalam Coal)	285	Coal
Lakvijaya (Puttalam Coal)	285	Coal
Uthuru Janani	24	Heavy Fuel
Barge CEB	60	Furnace Oil
<b>Private Thermal (IPPs)</b>		
Asia Power	51	Heavy Fuel
Sojitz - Kelanitissa	163	Auto Diesel
West Coast	270	Low Sulphur Furnace oil
Northern Power	27	Auto Diesel
ACE Embilipitiya	100	Furnace Oil