

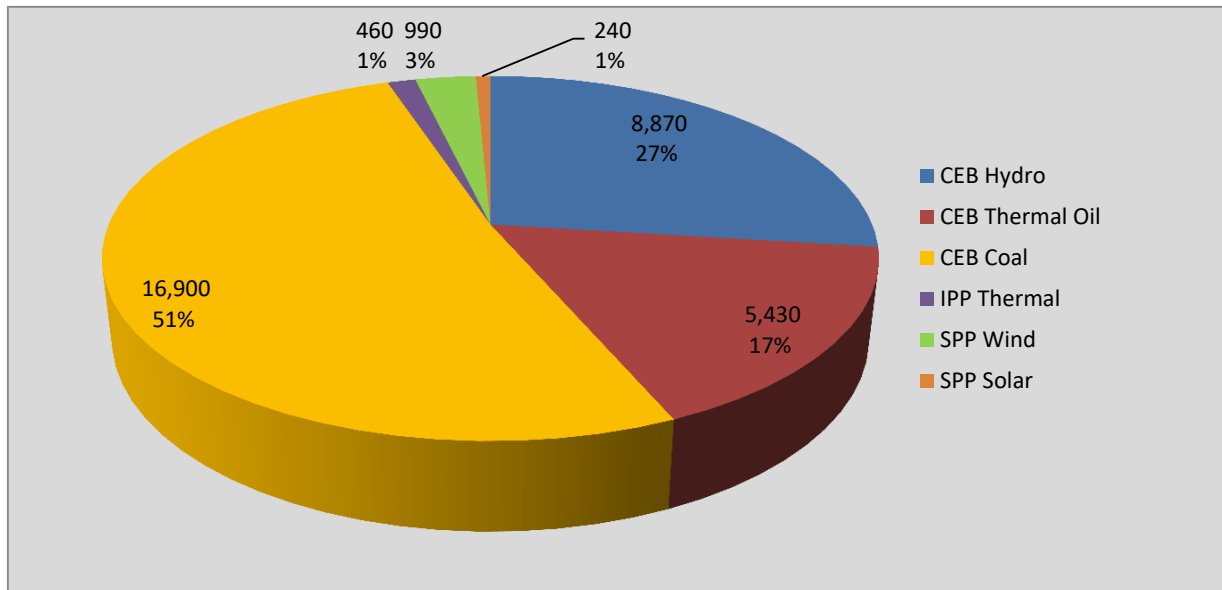
Generation and Reservoirs Statistics

October 8, 2017



PUBLIC UTILITIES COMMISSION OF SRI LANKA

Daily Generation Mix in MWh



Total Generation 32,900 MWh

Note: Generation from other SPPs (Mini Hydro, small scale Solar and Biomass) is not included

Cumulative Dispatch

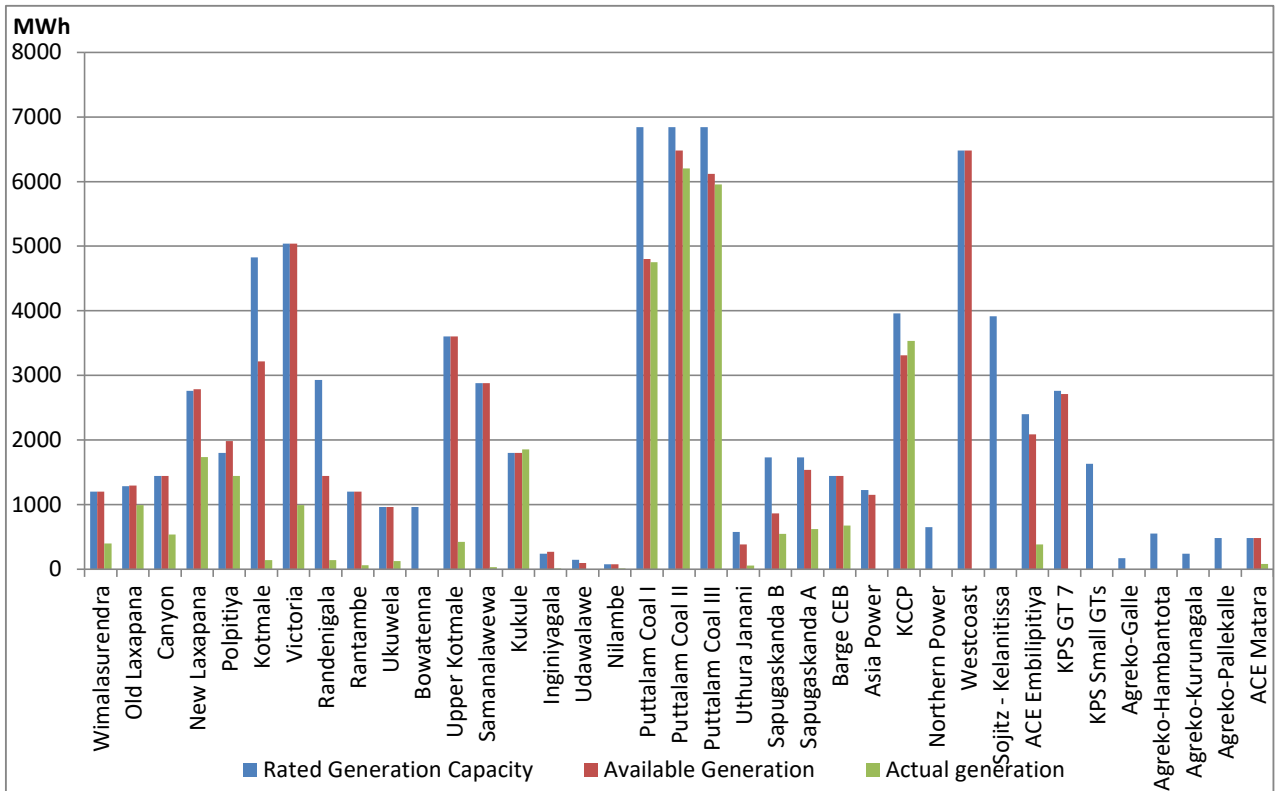
For Current Month

Category	Dispatch (MWh)	Percentage
CEB Hydro	80,799.0	27.44%
CEB Thermal Oil	54,932.0	18.66%
CEB Coal	107,487.0	36.50%
IPP Thermal	39,471.0	13.41%
SPP Wind& Solar	11,760.0	3.99%
Total	294,449.0	

For Current Year

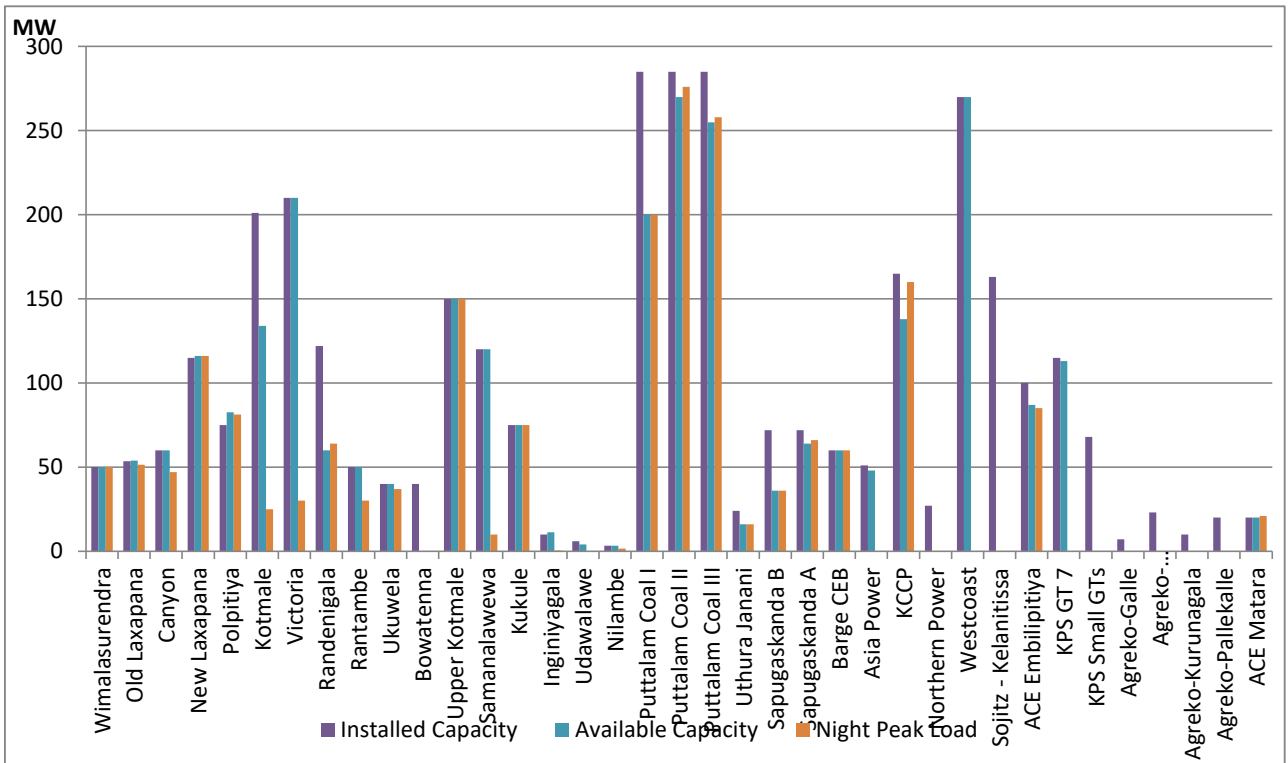
Category	Dispatch (GWh)	Percentage
CEB Hydro	1,924	17.28%
CEB Thermal Oil	2,051	18.43%
CEB Coal	4,219	37.90%
IPP Thermal	2,142	19.24%
Renewable	797	7.16%
Total	11,133	

Plant Dispatch on October 8, 2017



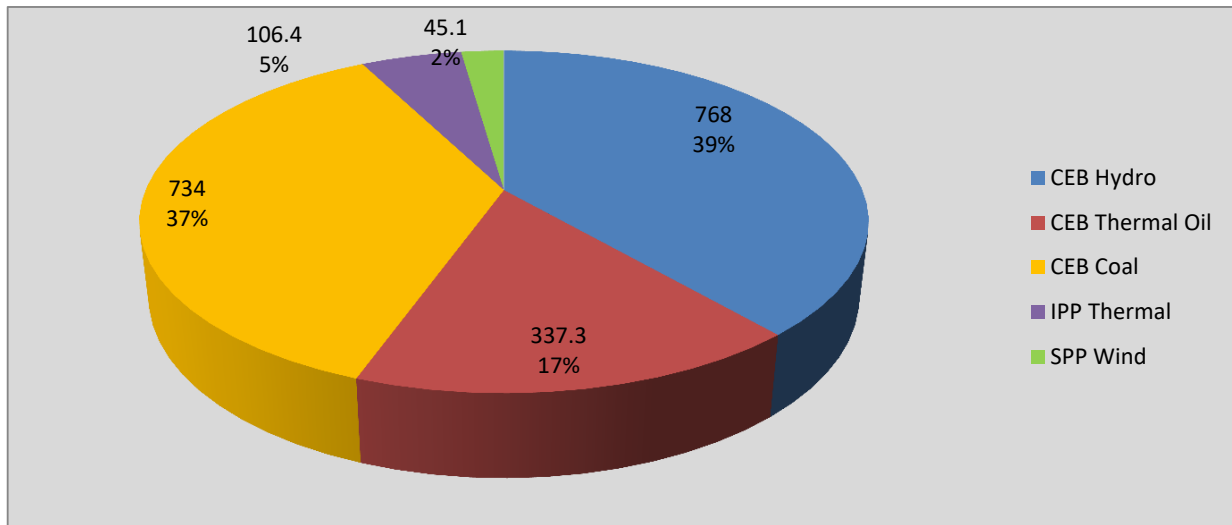
Note- Available Generation is estimated based on plant availability at 6.00am on October 9, 2017

Plant Loading at Night Peak on October 8, 2017



Note- Plant availability is recorded at 6.00 am on October 9, 2017

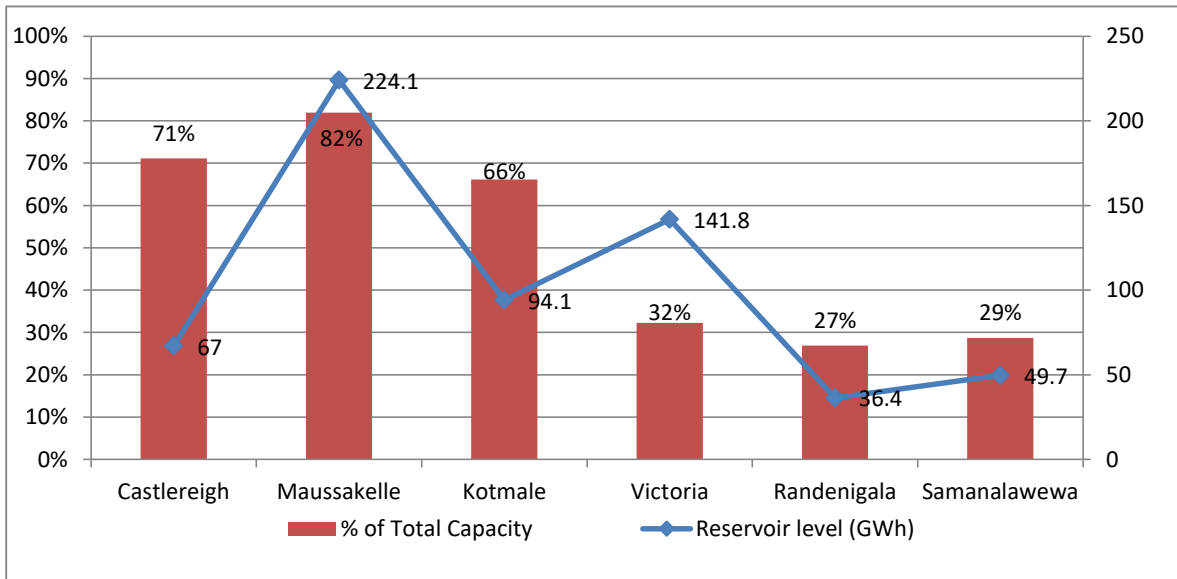
Contribution to the Night Peak in MW



Night Peak	1,990.8 MW
Day Peak	1,491.1 MW
Minimum Demand	1,007.4 MW

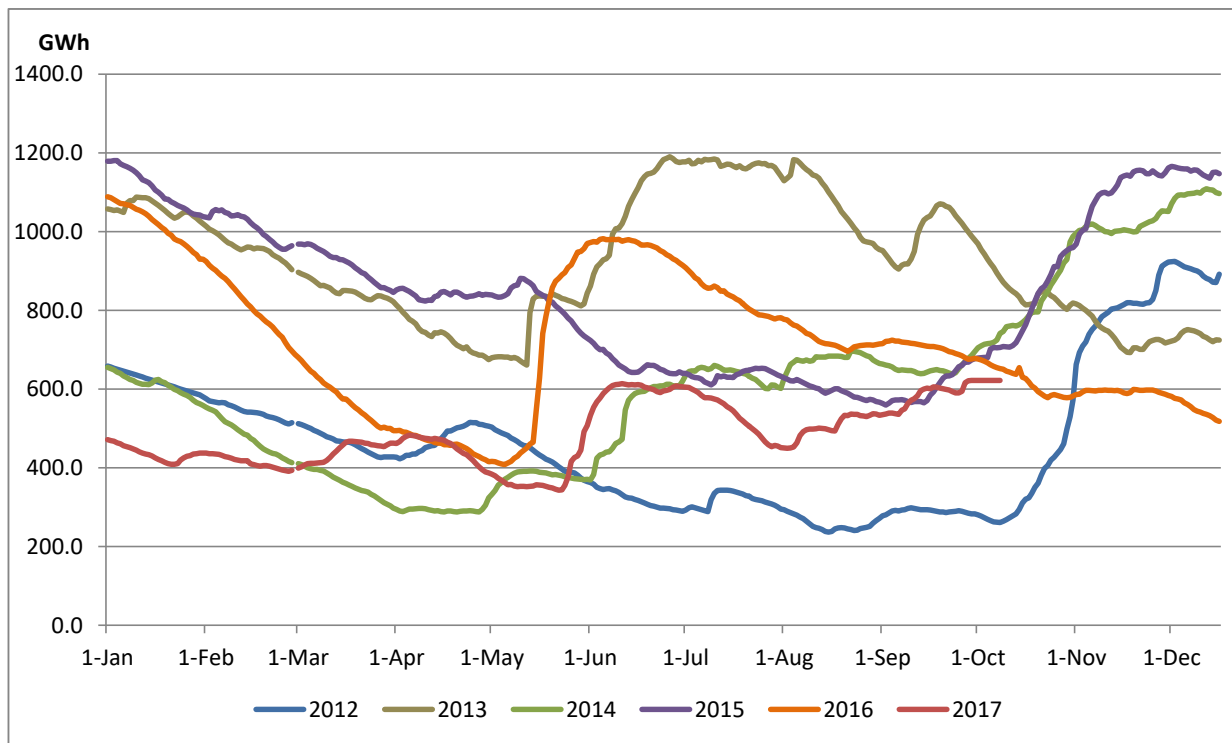
Note: Contribution from other SPPs (Mini Hydro, Solar and Biomass) is not included

Reservoir Levels - as at 06.00 Hr on October 9, 2017

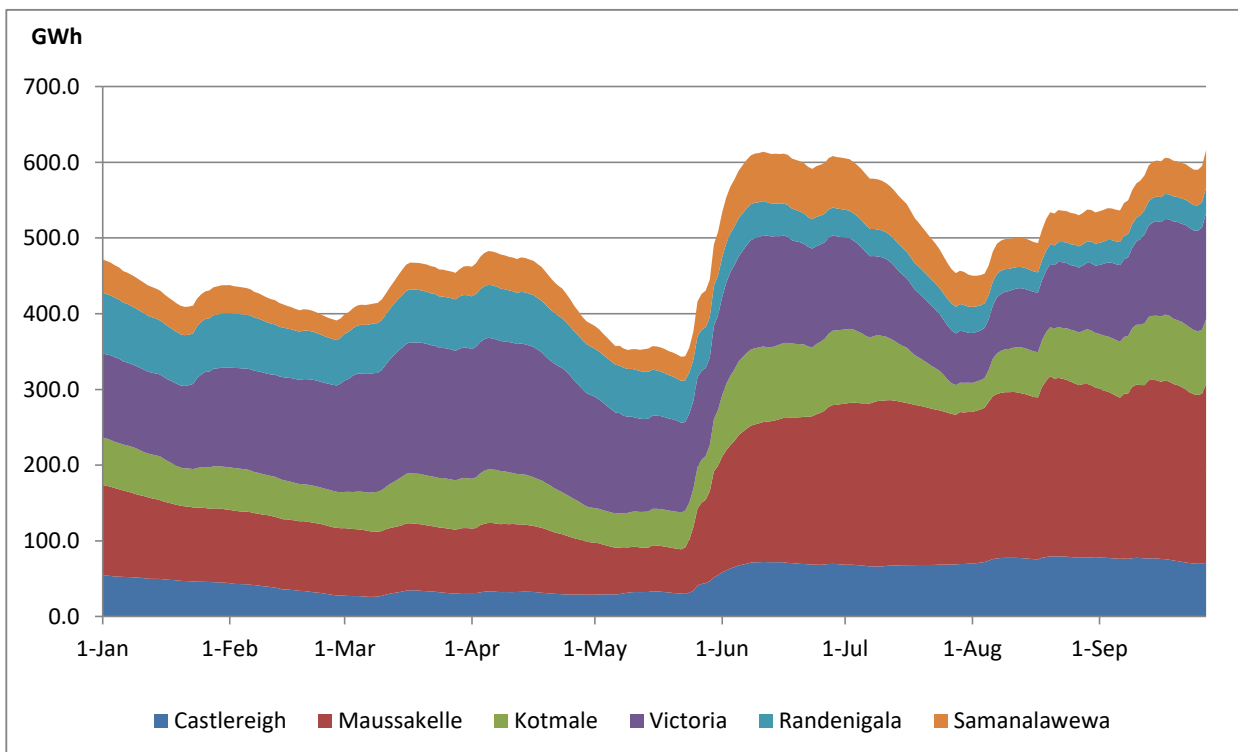


Total Reservoir Level(GWh)	613.1
% of Total capacity	48.7%

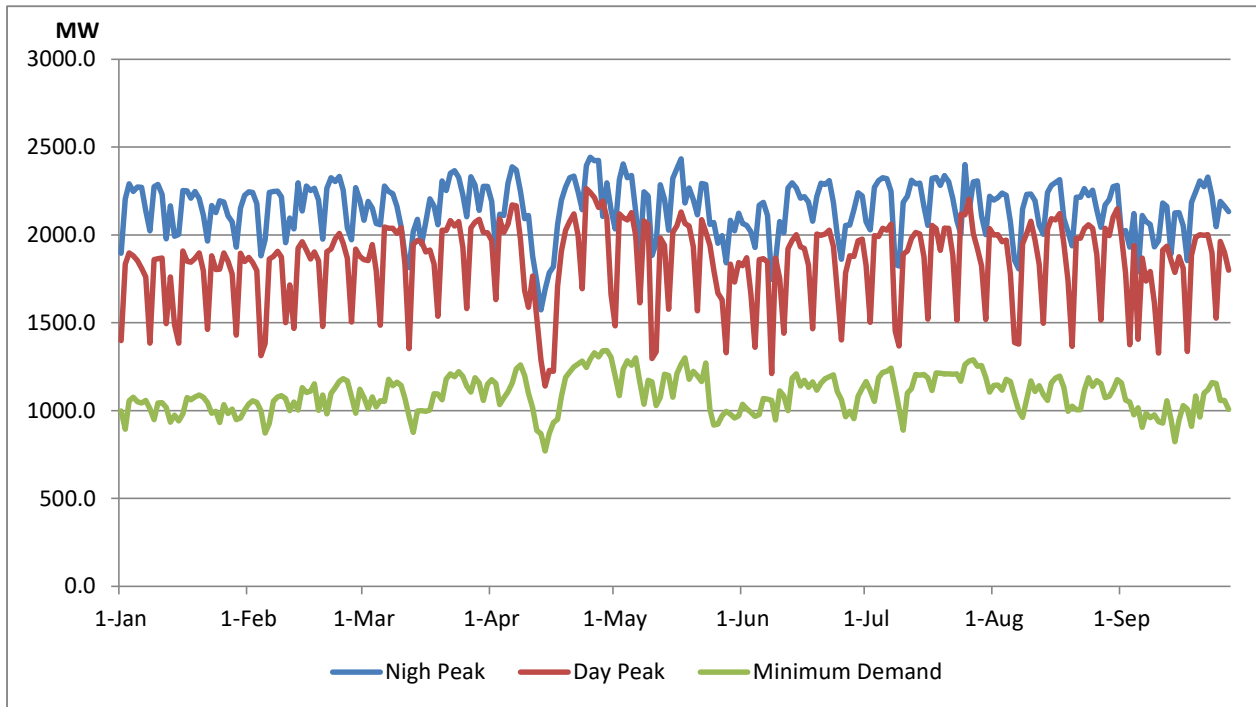
Comparison of Total Reservoir Storage Levels with Past Years



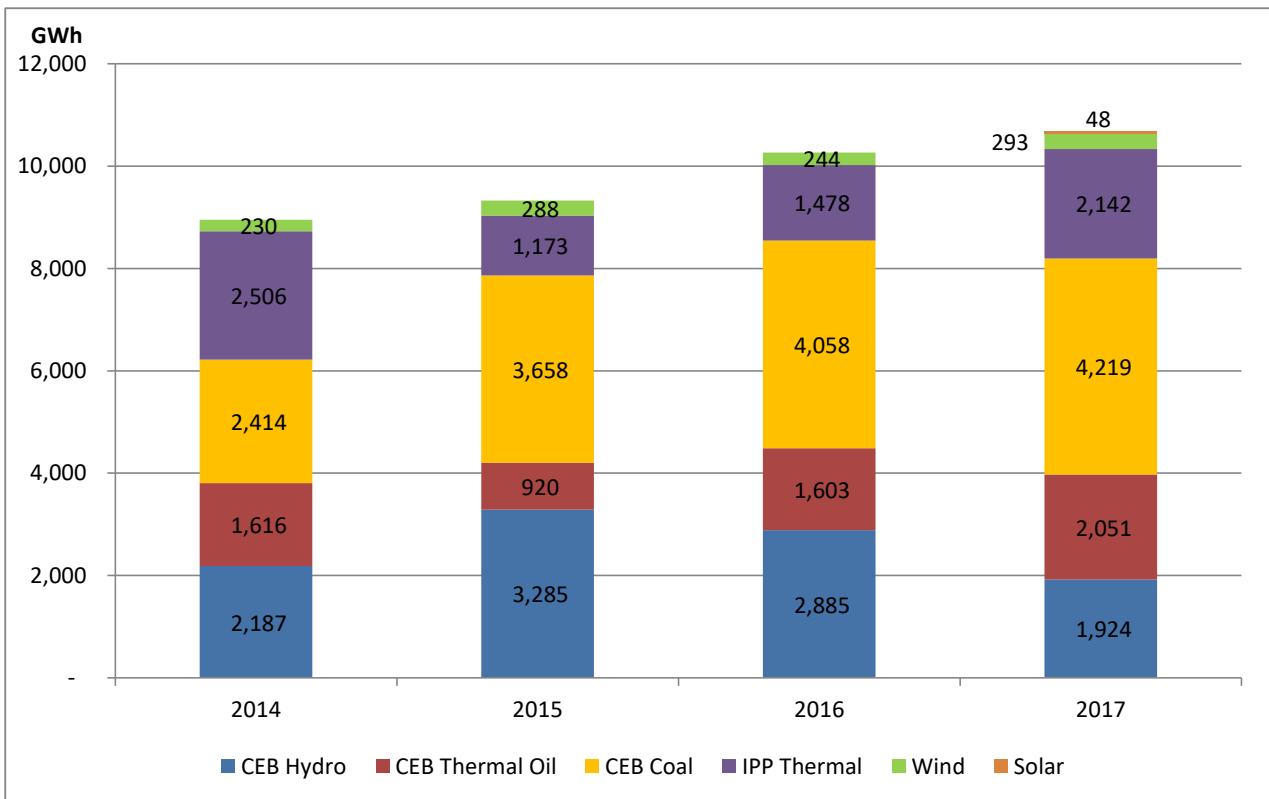
Variation of Major Hydro Reservoir Levels in GWh- 2017



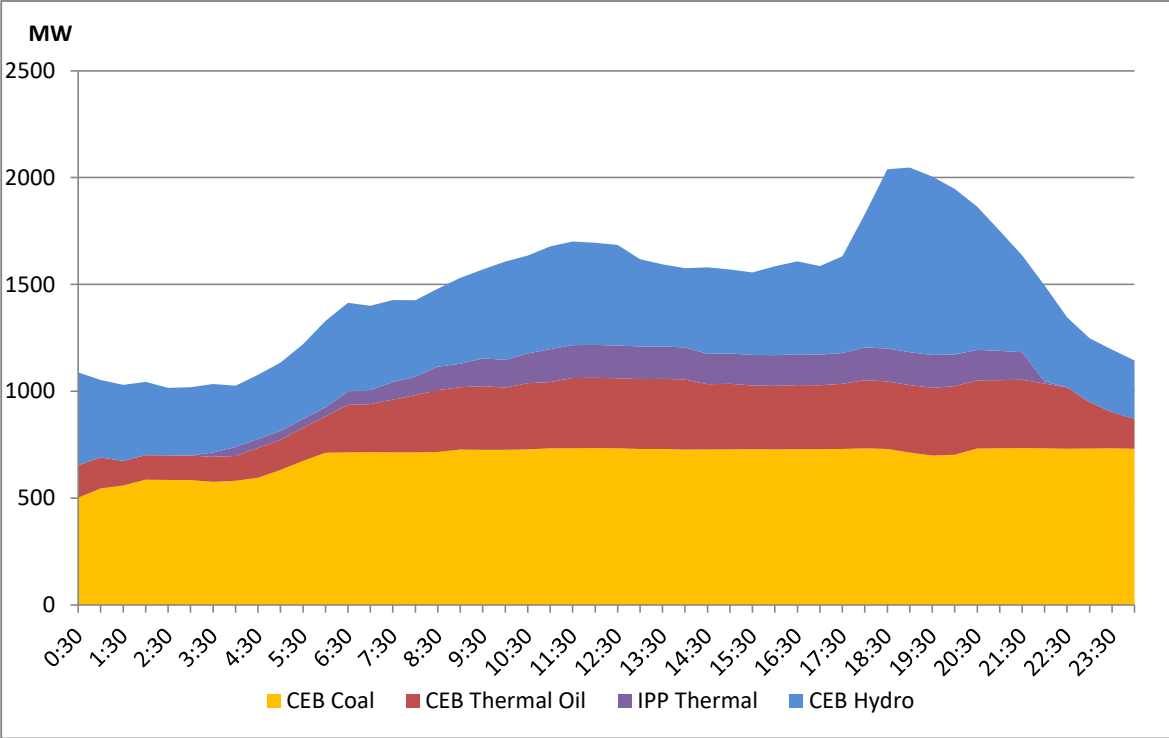
Variation of Demand 2017



Comparison of Cumulative Dispatch



Daily Load Curve - October 7, 2017



Power Station	Capacity (MW)	Primary Fuel
CEB Hydro		
Victoria	210	
Ukuwela	40	
Kotmale	201	
Randenigala	122	
Rantambe	49	
Bowatenna	40	
Nilambe	3.2	
Upper Kotmale	150	
Old Laxapana	50	
New Laxapana	115	
Polpitiya	75	
Wimalasurendra	50	
Canyon	60	
Samanalawewa	120	
Kukuleganga	75	
Inginiyagala	10	
Udawalawe	6	
CEB Thermal		
Sapugaskanda 1	72	Heavy Fuel
Sapugaskanda 2	72	Heavy Fuel
Kelanitissa Small Gas Turb	68	Auto Diesel
GT 7 - Kelanitissa	115	Auto Diesel
Kelanitissa CCY	165	Naptha & Diesel
Lakvijaya (Puttalam Coal)	285	Coal
Lakvijaya (Puttalam Coal)	285	Coal
Lakvijaya (Puttalam Coal)	285	Coal
Uthuru Janani	24	Heavy Fuel
Barge CEB	60	Furnace Oil
Private Thermal (IPPs)		
Asia Power	51	Heavy Fuel
Sojitz - Kelanitissa	163	Auto Diesel
West Coast	270	Low Sulphur Furnace oil
Northern Power	27	Auto Diesel
ACE Embilipitiya	100	Furnace Oil