

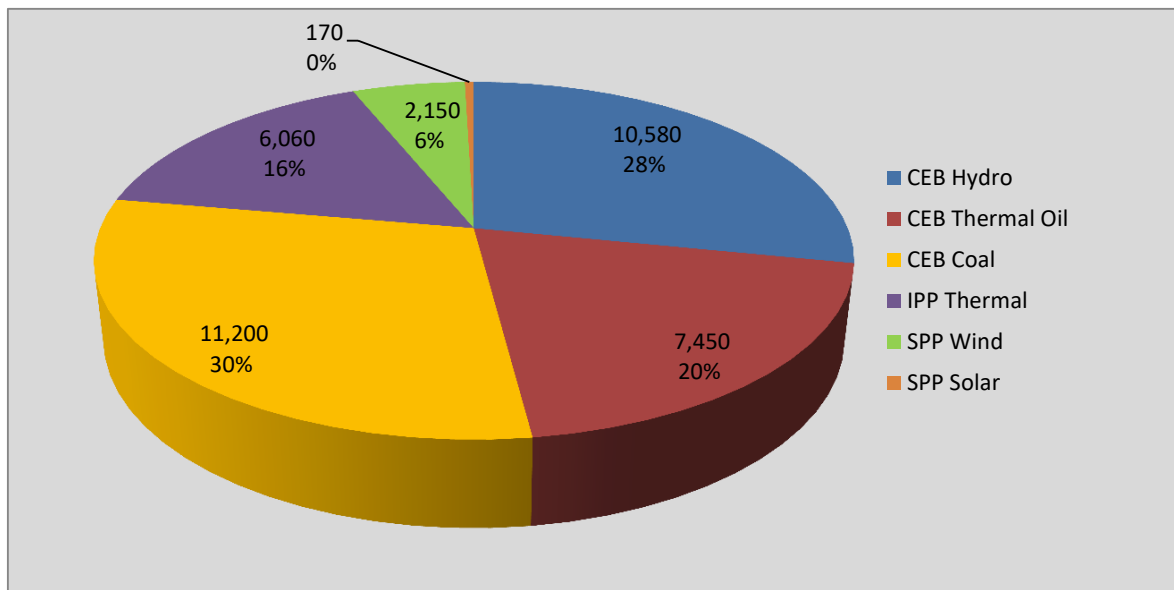
# **Generation and Reservoirs Statistics**

**July 10, 2017**



PUBLIC UTILITIES COMMISSION OF SRI LANKA

## Daily Generation Mix in MWh



**Total Generation 37,610 MWh**

Note: Generation from other SPPs (Mini Hydro, small scale Solar and Biomass) is not included

## Cumulative Dispatch

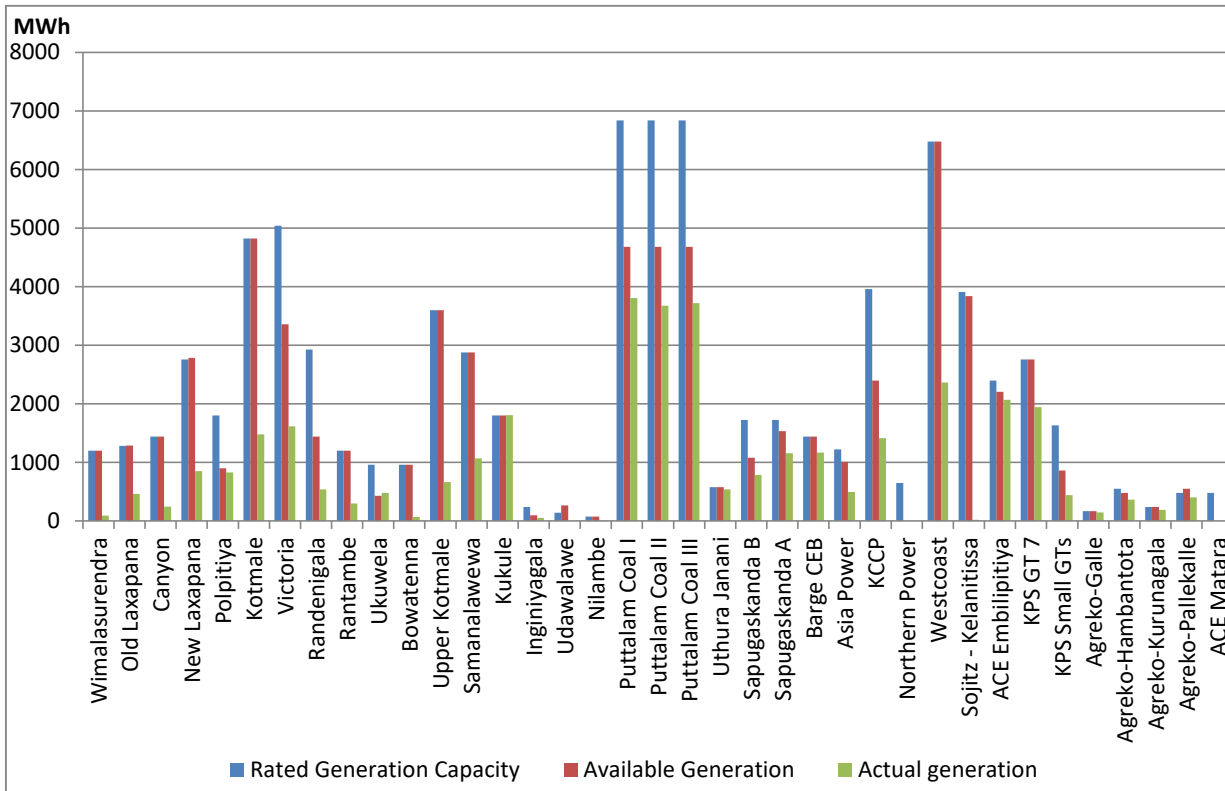
### For Current Month

Category	Dispatch (MWh)	Percentage
CEB Hydro	84,677.0	22.25%
CEB Thermal Oil	57,984.0	15.24%
CEB Coal	146,301.0	38.45%
IPP Thermal	76,014.0	19.98%
SPP Wind& Solar	15,530.0	4.08%
<b>Total</b>	<b>380,506.0</b>	

### For Current Year

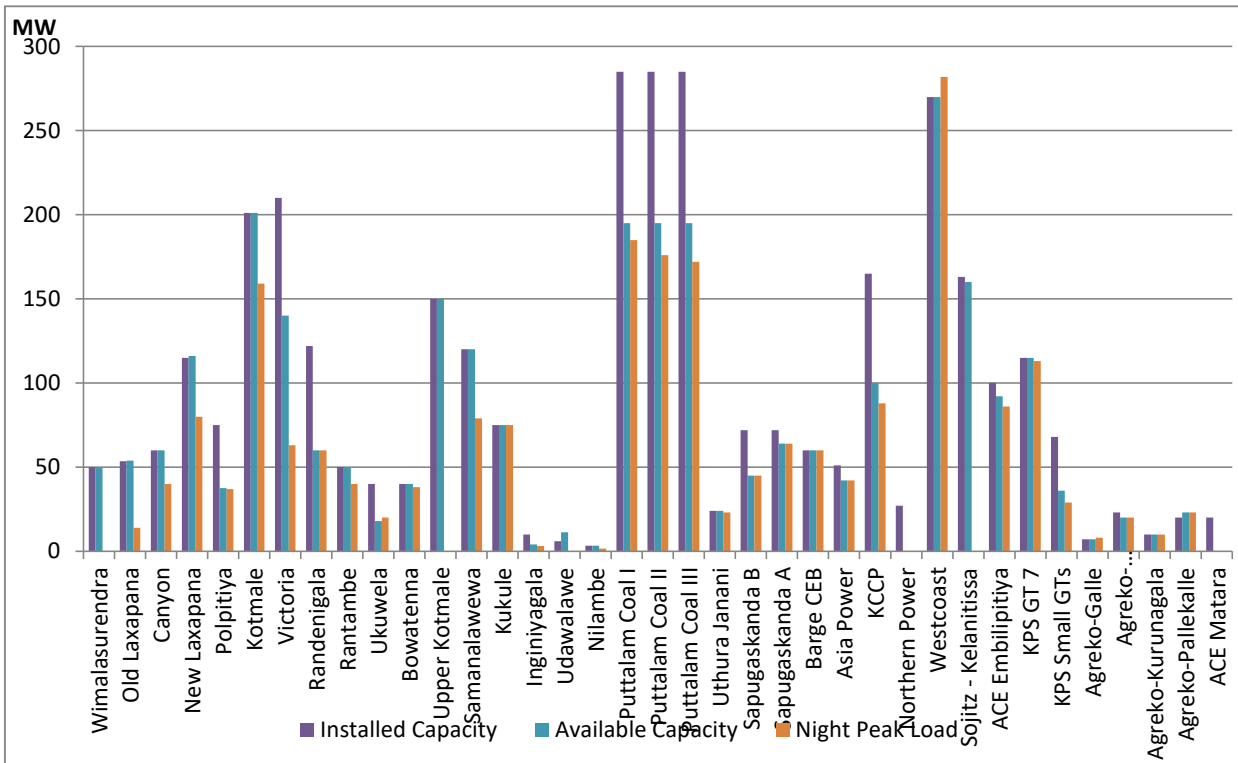
Category	Dispatch (GWh)	Percentage
CEB Hydro	1,049	14.21%
CEB Thermal Oil	1,361	18.44%
CEB Coal	3,109	42.14%
IPP Thermal	1,525	20.68%
Renewable	334	4.52%
<b>Total</b>	<b>7,377</b>	

## Plant Dispatch on July 10, 2017



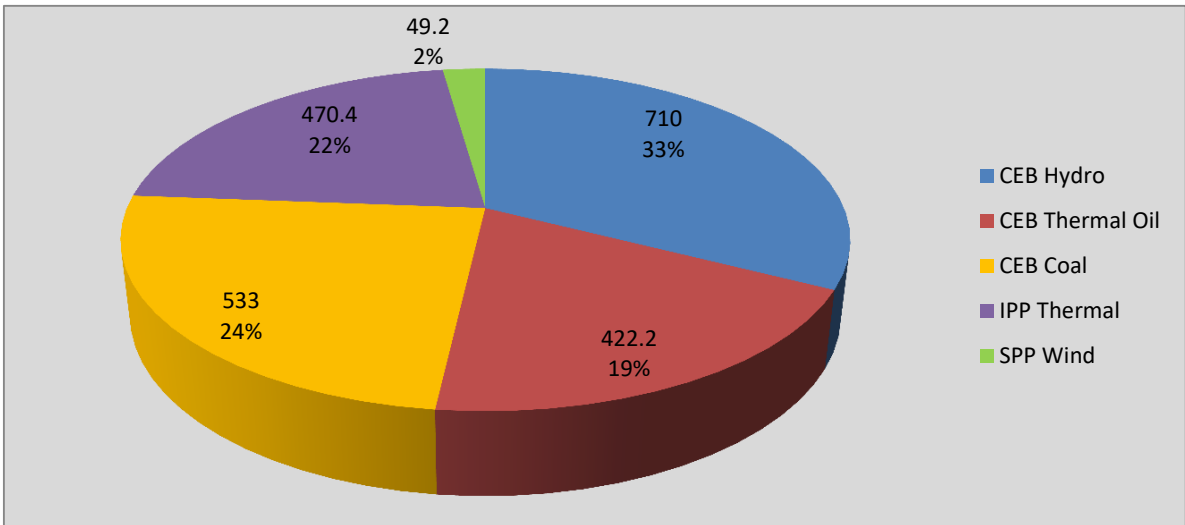
Note- Available Generation is estimated based on plant availability at 6.00am on July 11, 2017

## Plant Loading at Night Peak on July 10, 2017



Note- Plant availability is recorded at 6.00 am on July 11, 2017

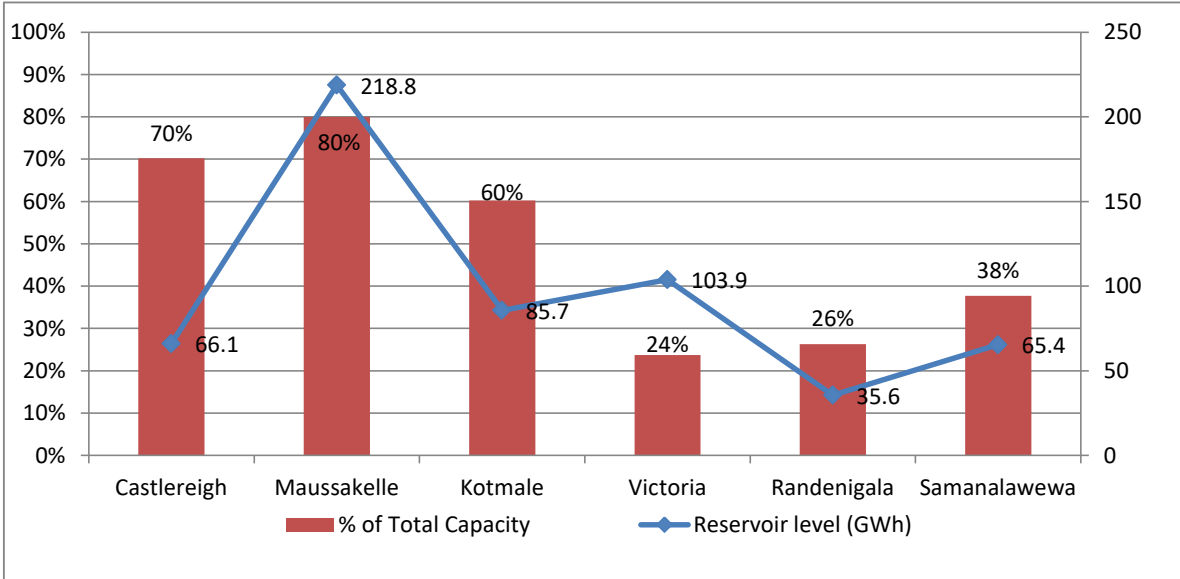
### Contribution to the Night Peak in MW



Night Peak 2,184.8 MW  
 Day Peak 1,890.7 MW  
 Minimum Demand 888.7 MW

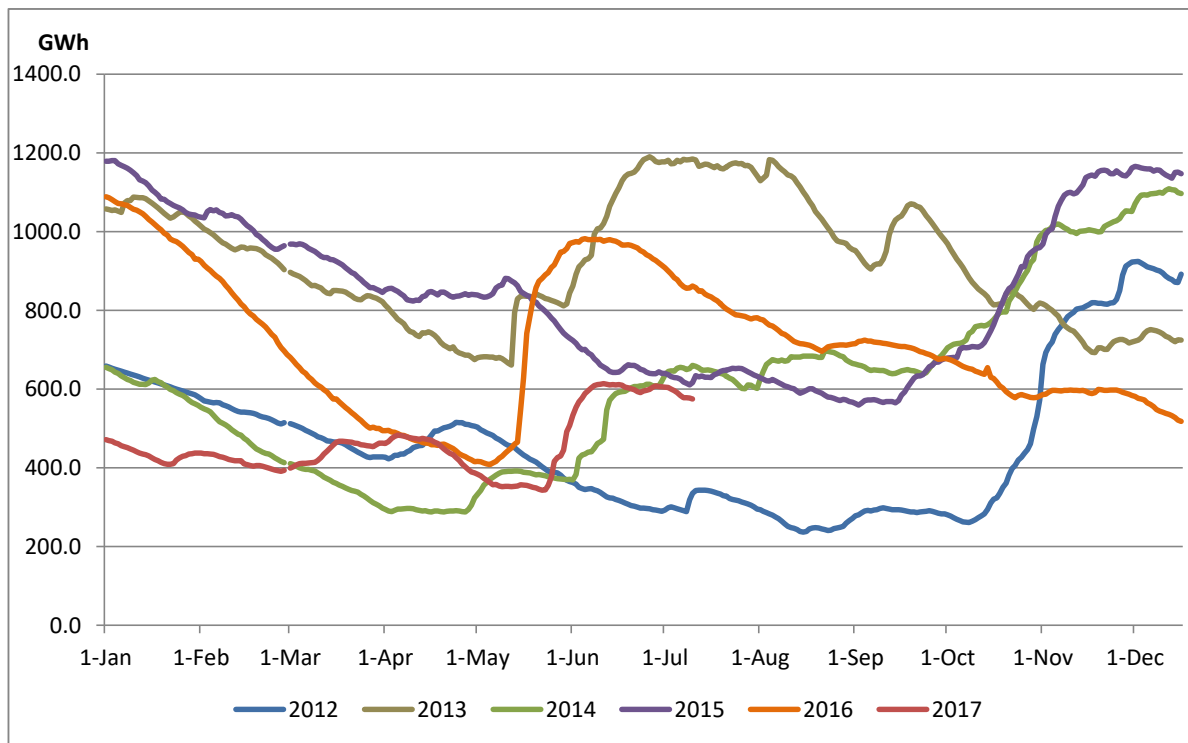
**Note:** Contribution from other SPPs (Mini Hydro, Solar and Biomass) is not included

### Reservoir Levels - as at 06.00 Hr on July 11, 2017

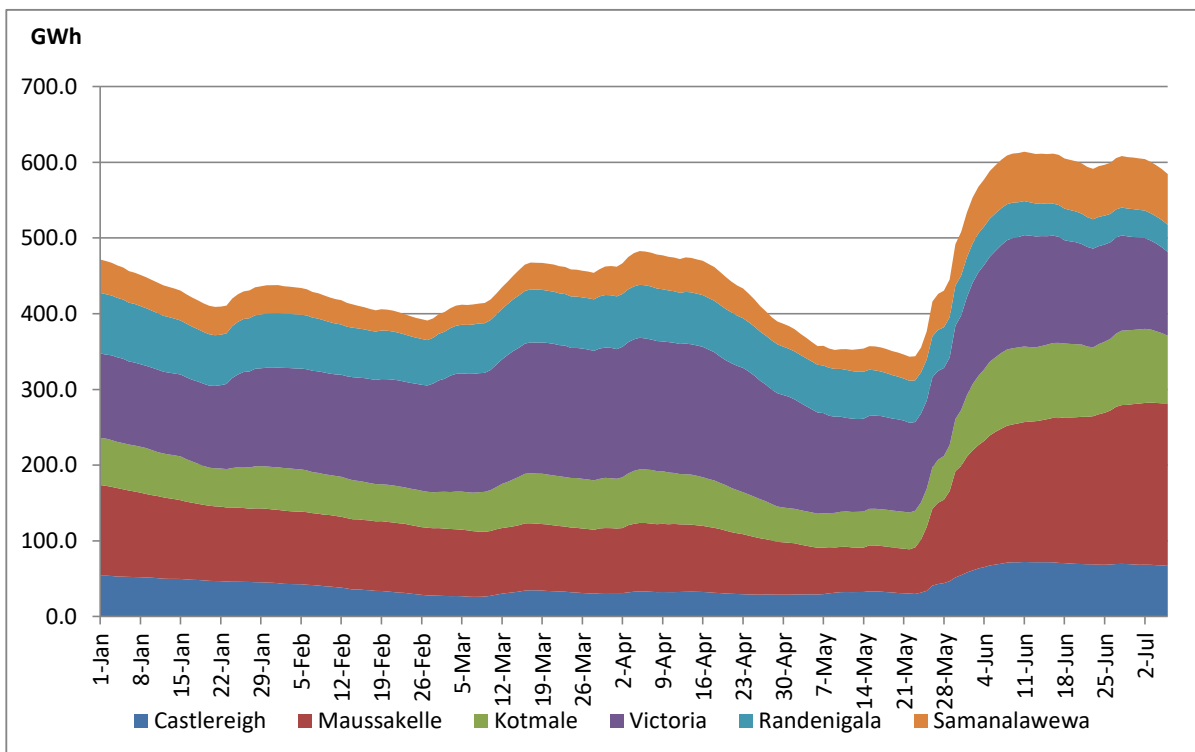


Total Reservoir Level(GWh) 575.4  
 % of Total capacity 45.7%

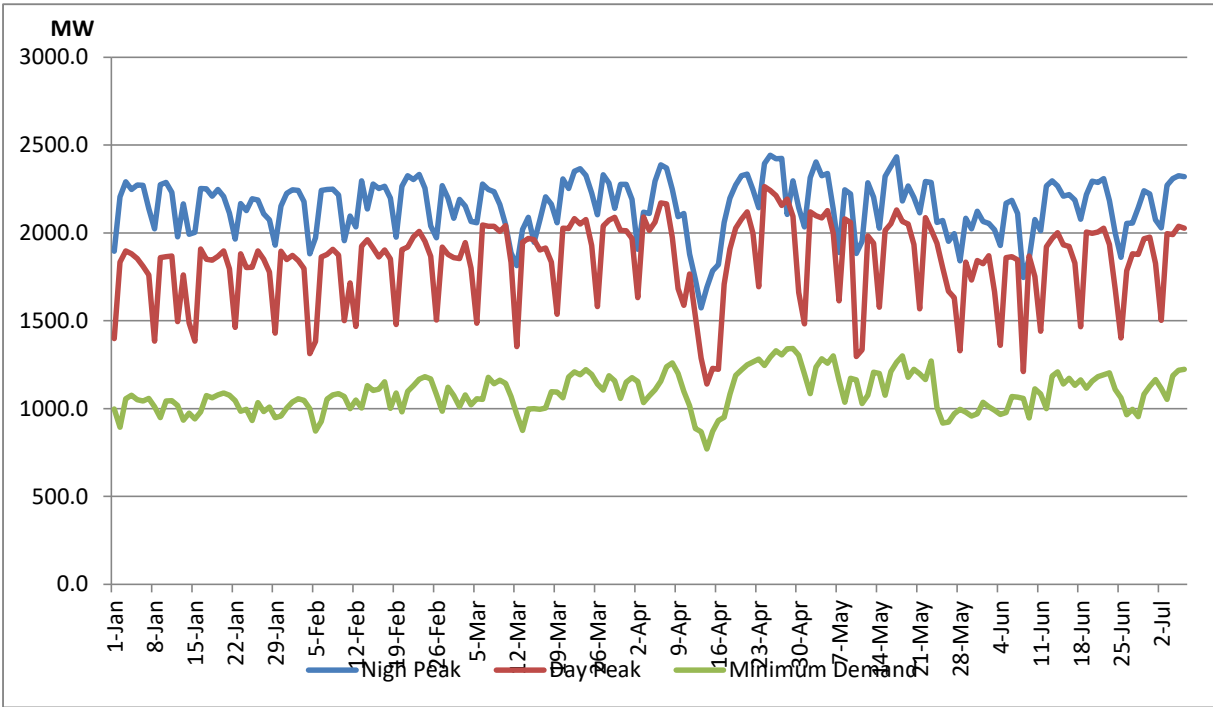
### Comparison of Total Reservoir Storage Levels with Past Years



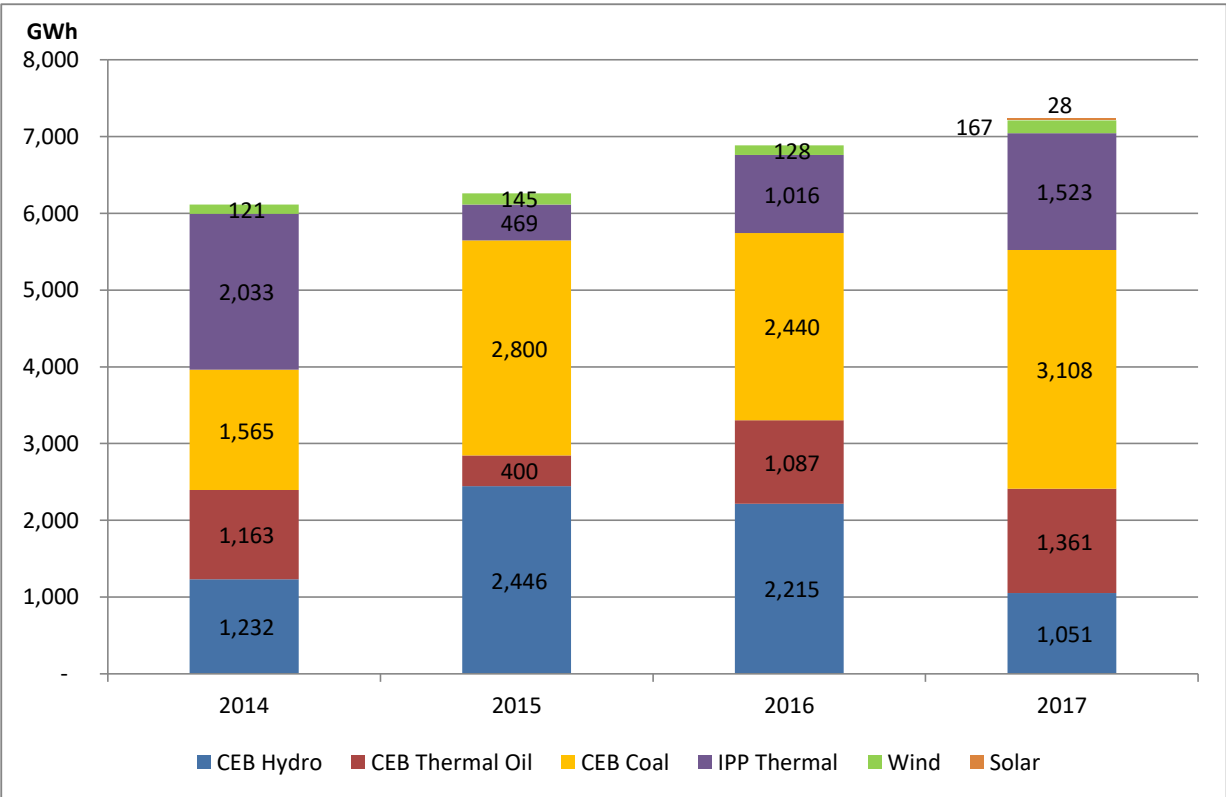
### Variation of Major Hydro Reservoir Levels in GWh- 2017



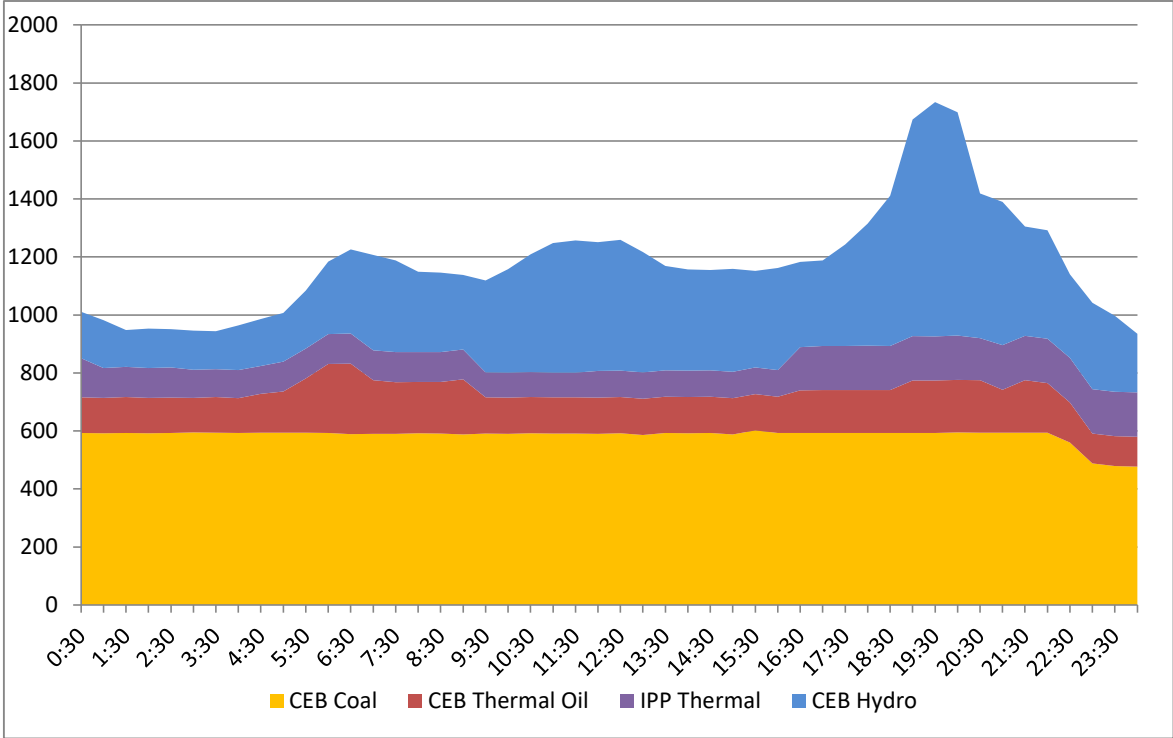
### Variation of Demand 2017



### Comparison of Cumulative Dispatch



# Daily Load Curve - July 9, 2017



Power Station	Capacity (MW)	Primary Fuel
<b>CEB Hydro</b>		
Victoria	210	
Ukuwela	40	
Kotmale	201	
Randenigala	122	
Rantambe	49	
Bowatenna	40	
Nilambe	3.2	
Upper Kotmale	150	
Old Laxapana	50	
New Laxapana	115	
Polpitiya	75	
Wimalasurendra	50	
Canyon	60	
Samanalawewa	120	
Kukuleganga	75	
Inginiyagala	10	
Udawalawe	6	
<b>CEB Thermal</b>		
Sapugaskanda 1	72	Heavy Fuel
Sapugaskanda 2	72	Heavy Fuel
Kelanitissa Small Gas Turb	68	Auto Diesel
GT 7 - Kelanitissa	115	Auto Diesel
Kelanitissa CCY	165	Naptha & Diesel
Lakvijaya (Puttalam Coal)	285	Coal
Lakvijaya (Puttalam Coal)	285	Coal
Lakvijaya (Puttalam Coal)	285	Coal
Uthuru Janani	24	Heavy Fuel
Barge CEB	60	Furnace Oil
<b>Private Thermal (IPPs)</b>		
Asia Power	51	Heavy Fuel
Sojitz - Kelanitissa	163	Auto Diesel
West Coast	270	Low Sulphur Furnace oil
Northern Power	27	Auto Diesel
ACE Embilipitiya	100	Furnace Oil