

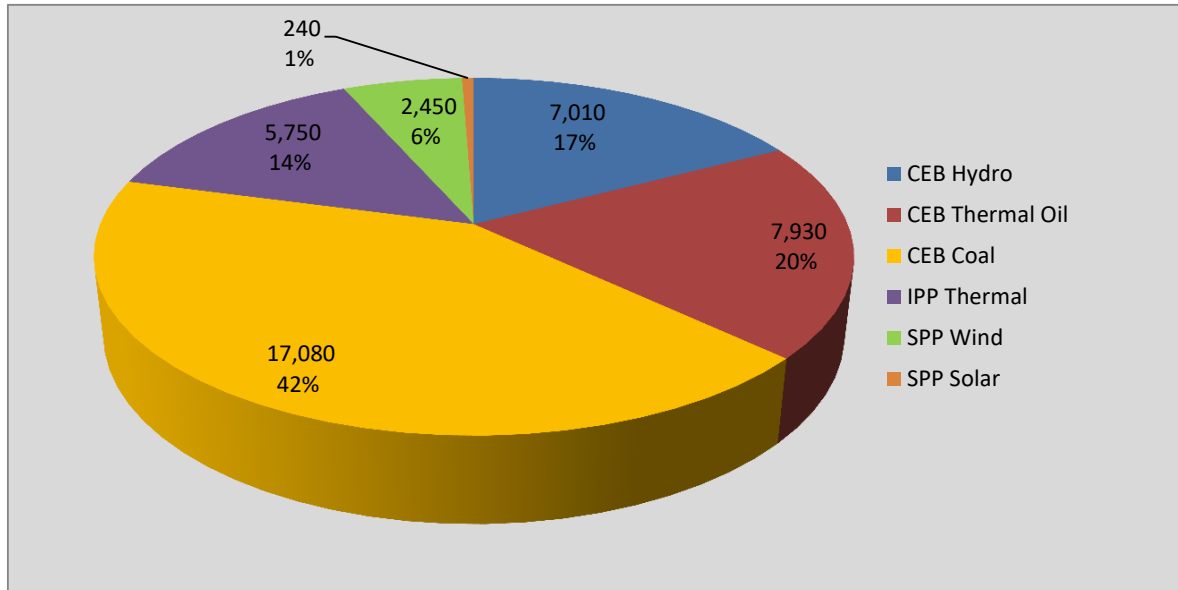
Generation and Reservoirs Statistics

June 23, 2017



PUBLIC UTILITIES COMMISSION OF SRI LANKA

Daily Generation Mix in MWh



Total Generation 40,450 MWh

Note: Generation from other SPPs (Mini Hydro, small scale Solar and Biomass) is not included

Cumulative Dispatch

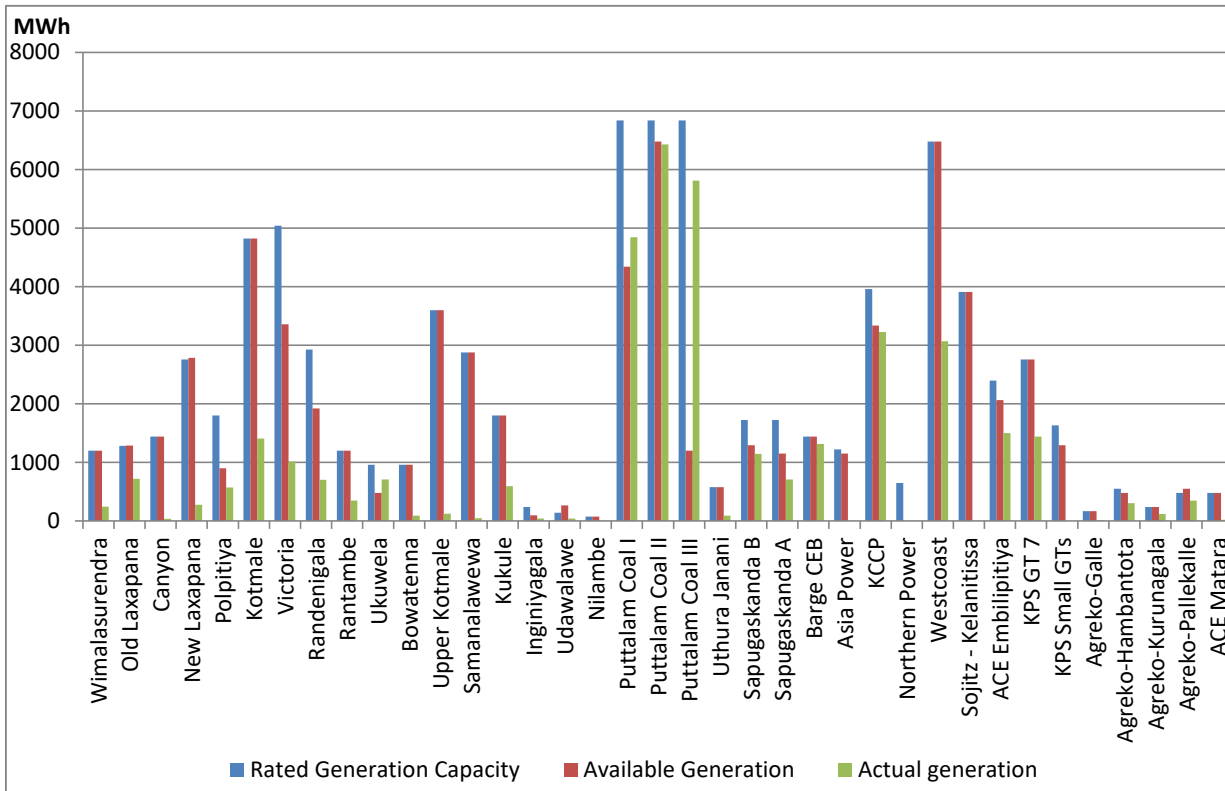
For Current Month

Category	Dispatch (MWh)	Percentage
CEB Hydro	174,243.0	19.97%
CEB Thermal Oil	145,011.0	16.62%
CEB Coal	378,637.0	43.39%
IPP Thermal	124,873.0	14.31%
SPP Wind& Solar	49,949.0	5.72%
Total	872,713.0	

For Current Year

Category	Dispatch (GWh)	Percentage
CEB Hydro	910	13.51%
CEB Thermal Oil	1,274	18.92%
CEB Coal	2,845	42.24%
IPP Thermal	1,403	20.83%
Renewable	303	4.50%
Total	6,735	

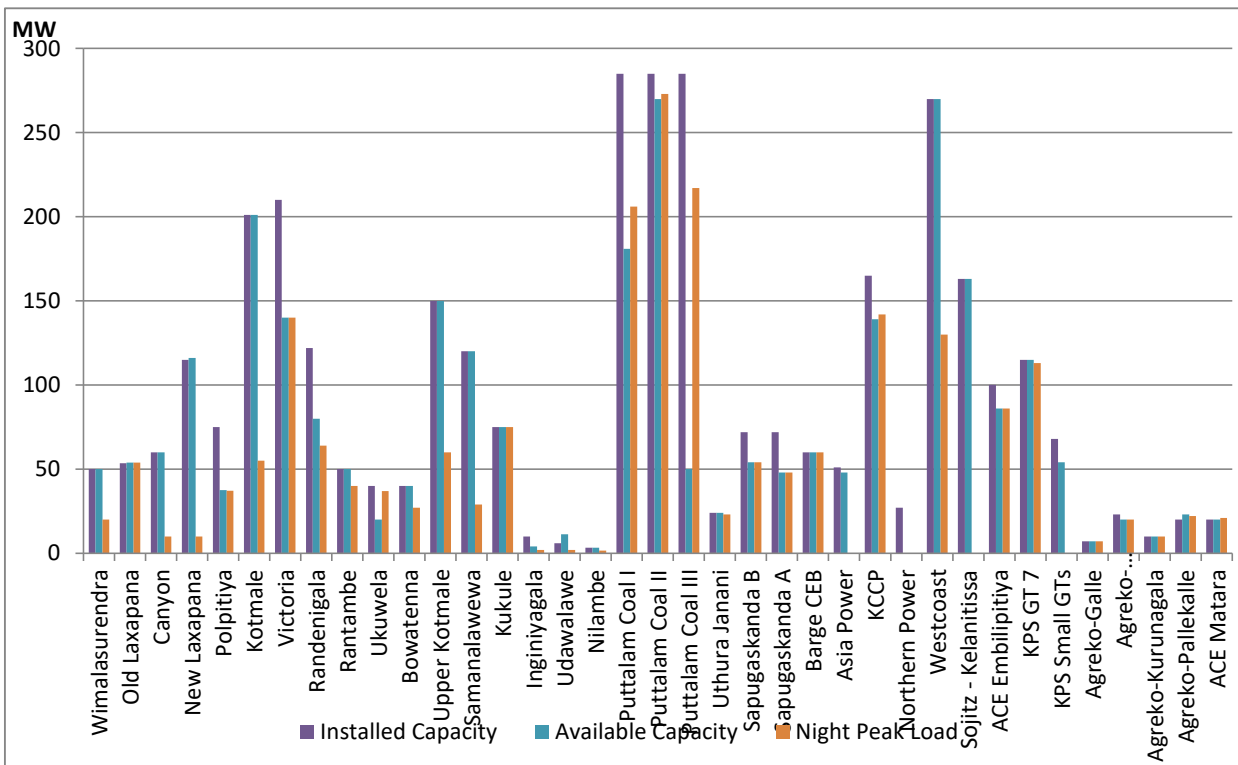
Plant Dispatch on June 23, 2017



Note- Available Generation is estimated based on plant availability at 6.00am on

June 24, 2017

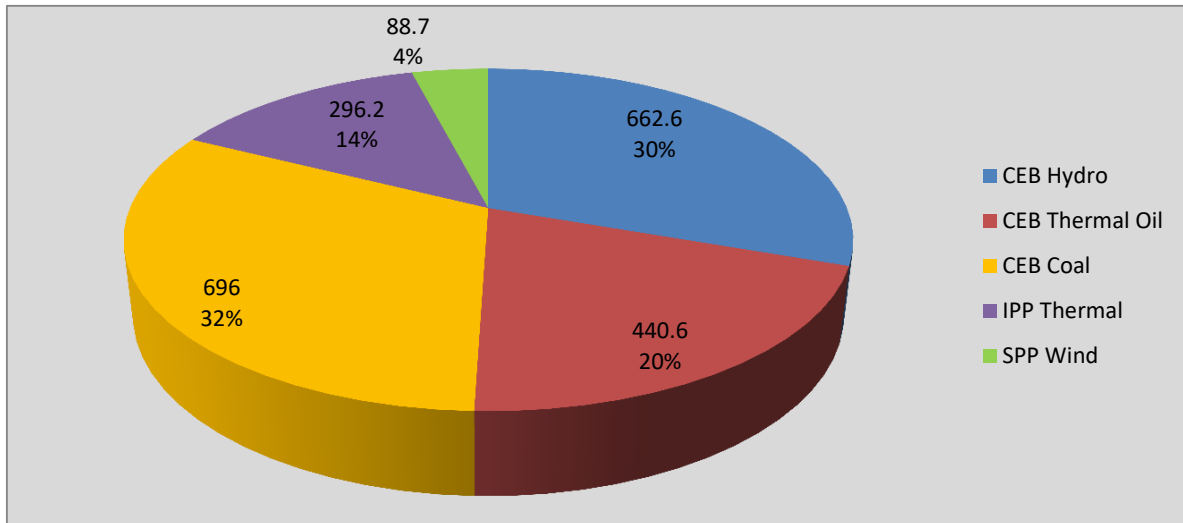
Plant Loading at Night Peak on June 23, 2017



Note- Plant availability is recorded at 6.00 am on

June 24, 2017

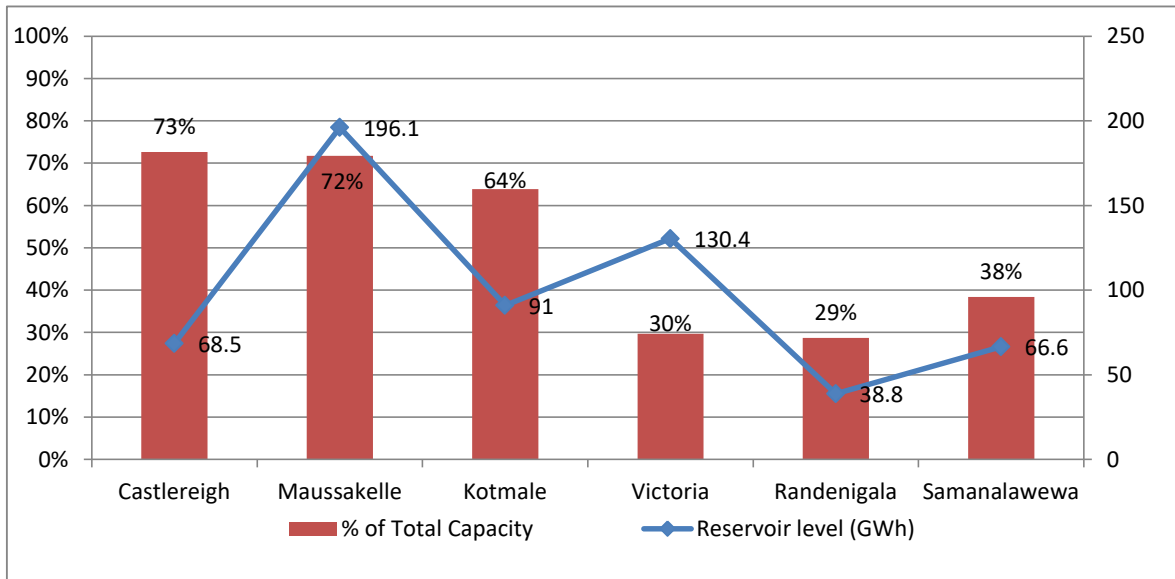
Contribution to the Night Peak in MW



Night Peak	2,184.1 MW
Day Peak	1,933.5 MW
Minimum Demand	1,204.4 MW

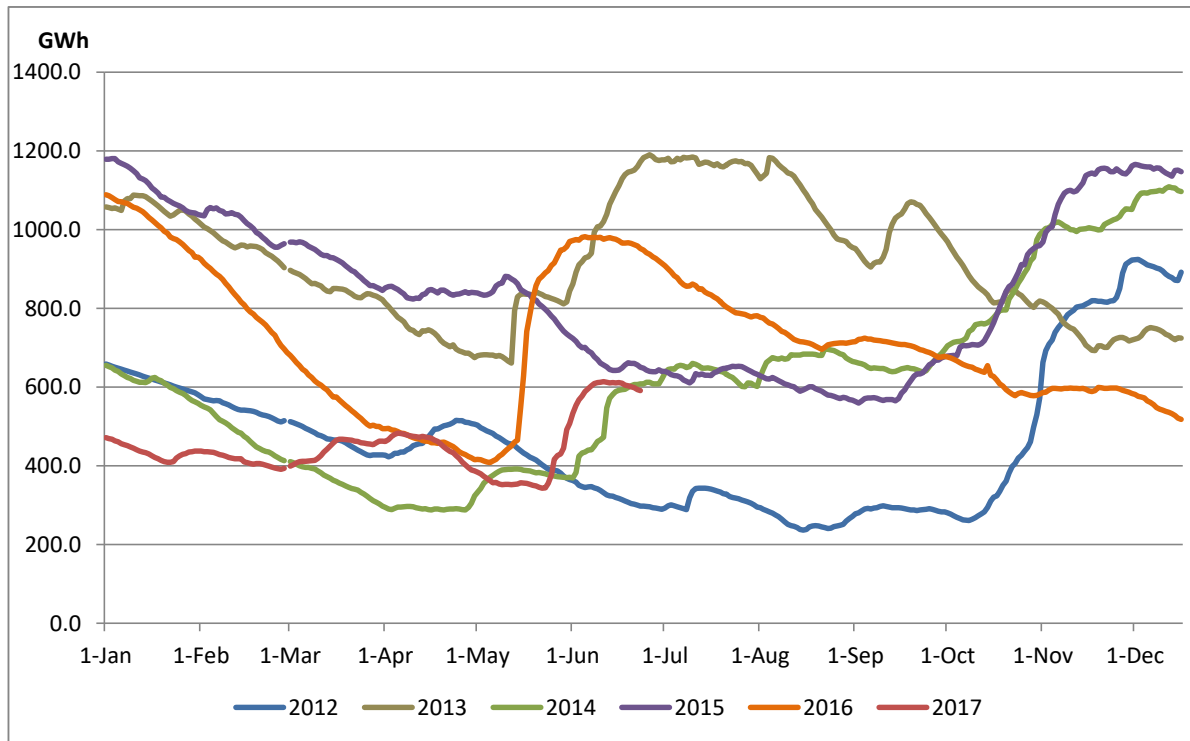
Note: Contribution from other SPPs (Mini Hydro, Solar and Biomass) is not included

Reservoir Levels - as at 06.00 Hr on June 24, 2017

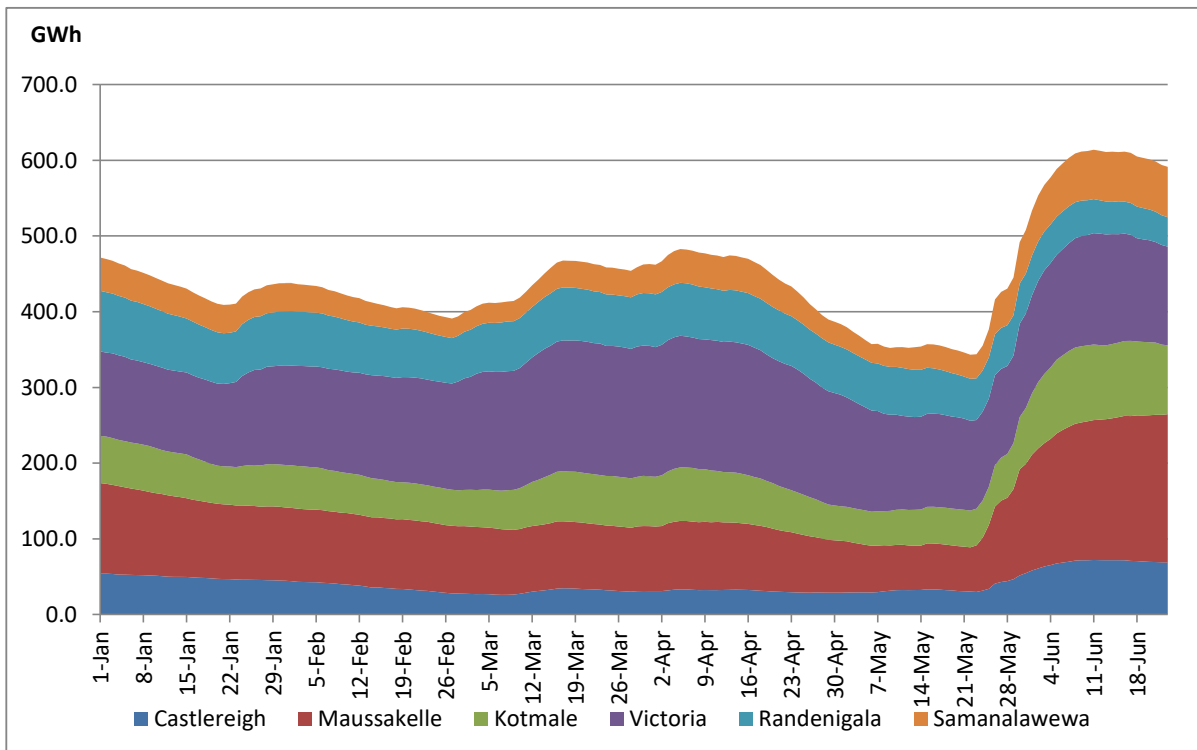


Total Reservoir Level(GWh)	591.4
% of Total capacity	47.0%

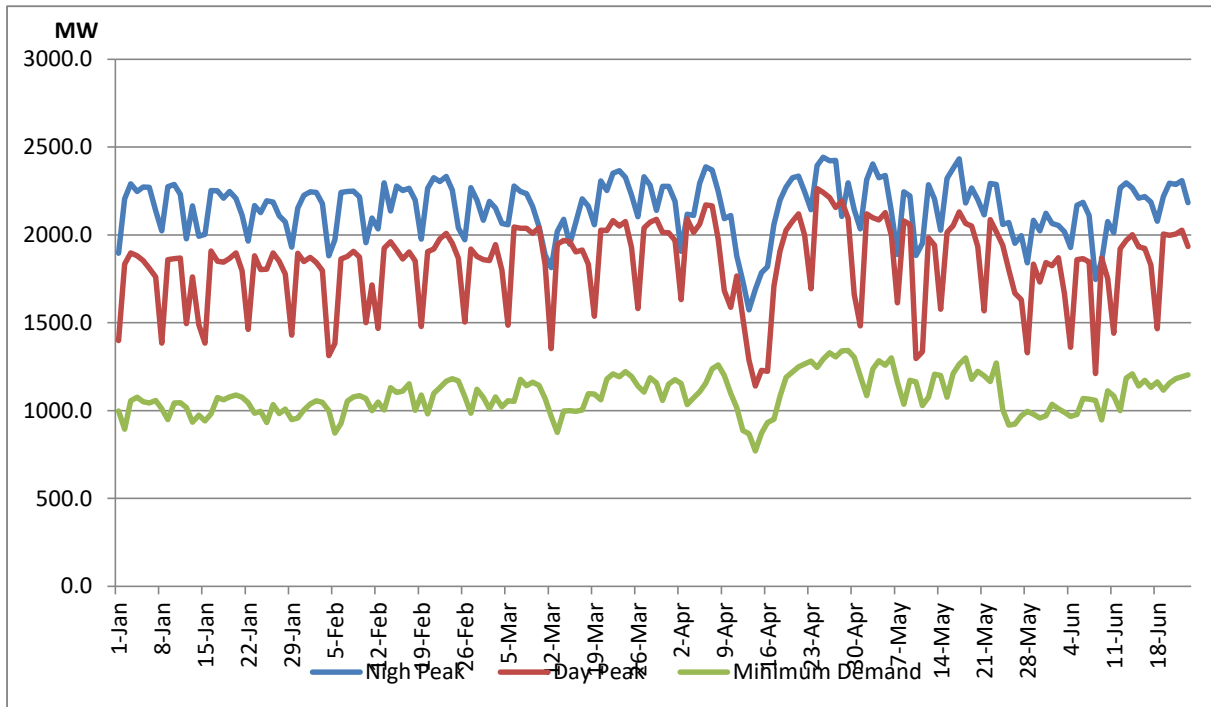
Comparison of Total Reservoir Storage Levels with Past Years



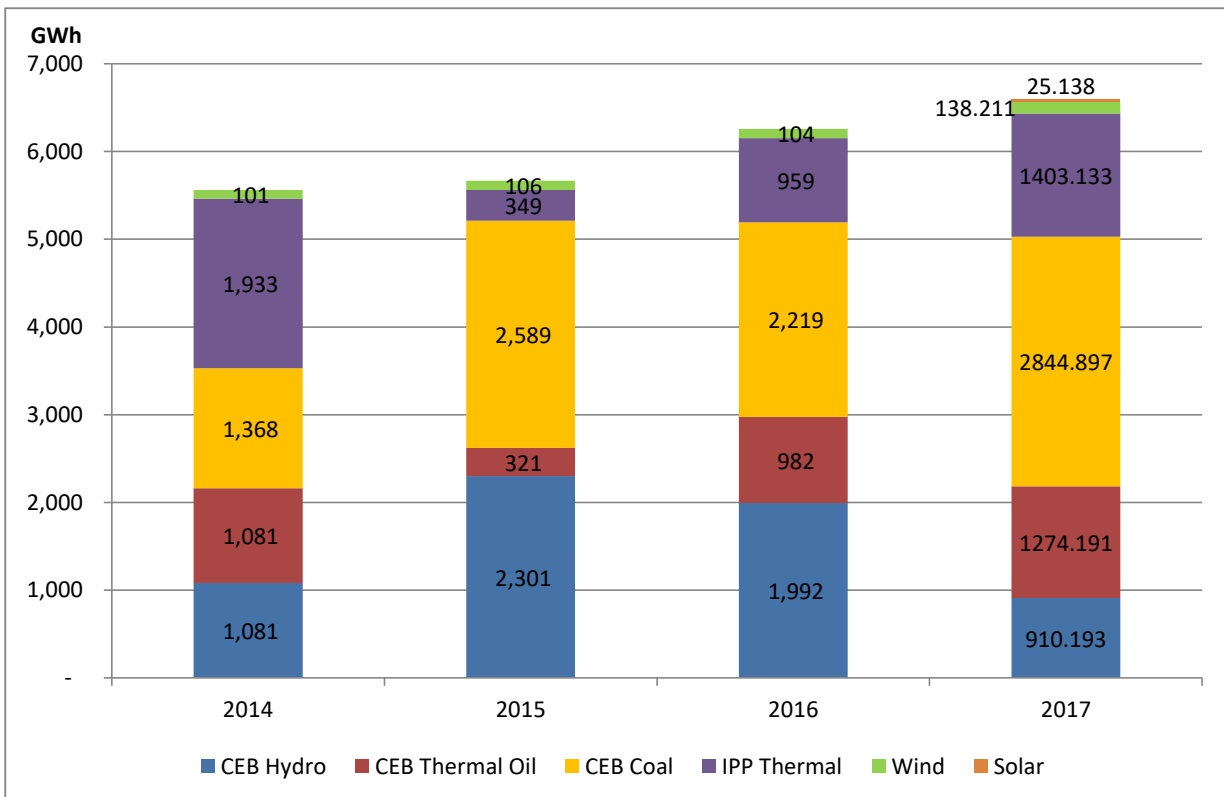
Variation of Major Hydro Reservoir Levels in GWh- 2017



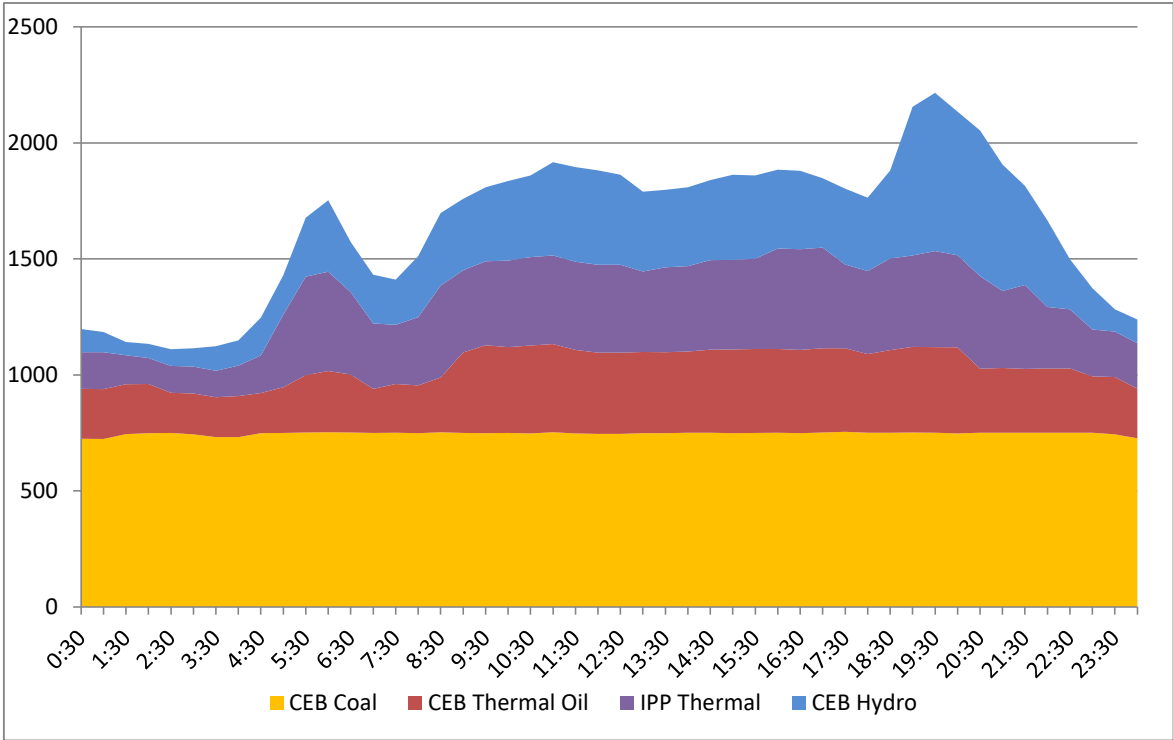
Variation of Demand 2017



Comparison of Cumulative Dispatch



Daily Load Curve - June 22, 2017



Power Station	Capacity (MW)	Primary Fuel
CEB Hydro		
Victoria	210	
Ukuwela	40	
Kotmale	201	
Randenigala	122	
Rantambe	49	
Bowatenna	40	
Nilambe	3.2	
Upper Kotmale	150	
Old Laxapana	50	
New Laxapana	115	
Polpitiya	75	
Wimalasurendra	50	
Canyon	60	
Samanalawewa	120	
Kukuleganga	75	
Inginiyagala	10	
Udawalawe	6	
CEB Thermal		
Sapugaskanda 1	72	Heavy Fuel
Sapugaskanda 2	72	Heavy Fuel
Kelanitissa Small Gas Turb	68	Auto Diesel
GT 7 - Kelanitissa	115	Auto Diesel
Kelanitissa CCY	165	Naptha & Diesel
Lakvijaya (Puttalam Coal)	285	Coal
Lakvijaya (Puttalam Coal)	285	Coal
Lakvijaya (Puttalam Coal)	285	Coal
Uthuru Janani	24	Heavy Fuel
Barge CEB	60	Furnace Oil
Private Thermal (IPPs)		
Asia Power	51	Heavy Fuel
Sojitz - Kelanitissa	163	Auto Diesel
West Coast	270	Low Sulphur Furnace oil
Northern Power	27	Auto Diesel
ACE Embilipitiya	100	Furnace Oil