

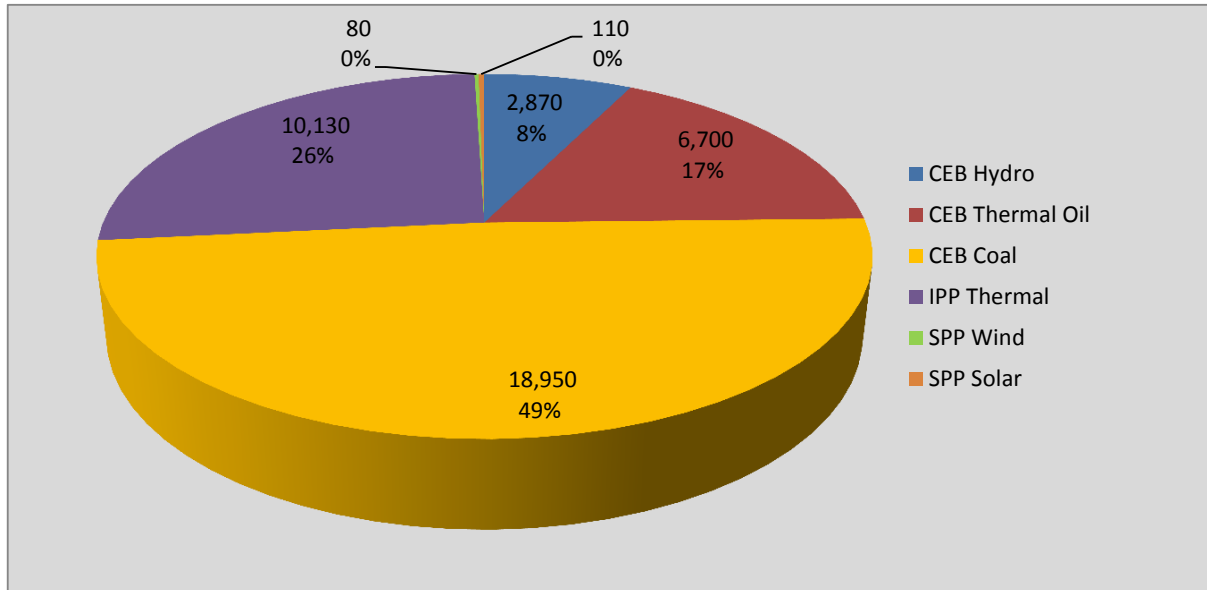
# **Generation and Reservoirs Statistics**

**February 20, 2017**



PUBLIC UTILITIES COMMISSION OF SRI LANKA

## Daily Generation Mix in MWh



**Total Generation 38,840 MWh**

Note: Generation from other SPPs (Mini Hydro, Solar and Biomass) is not included

## Cumulative Dispatch

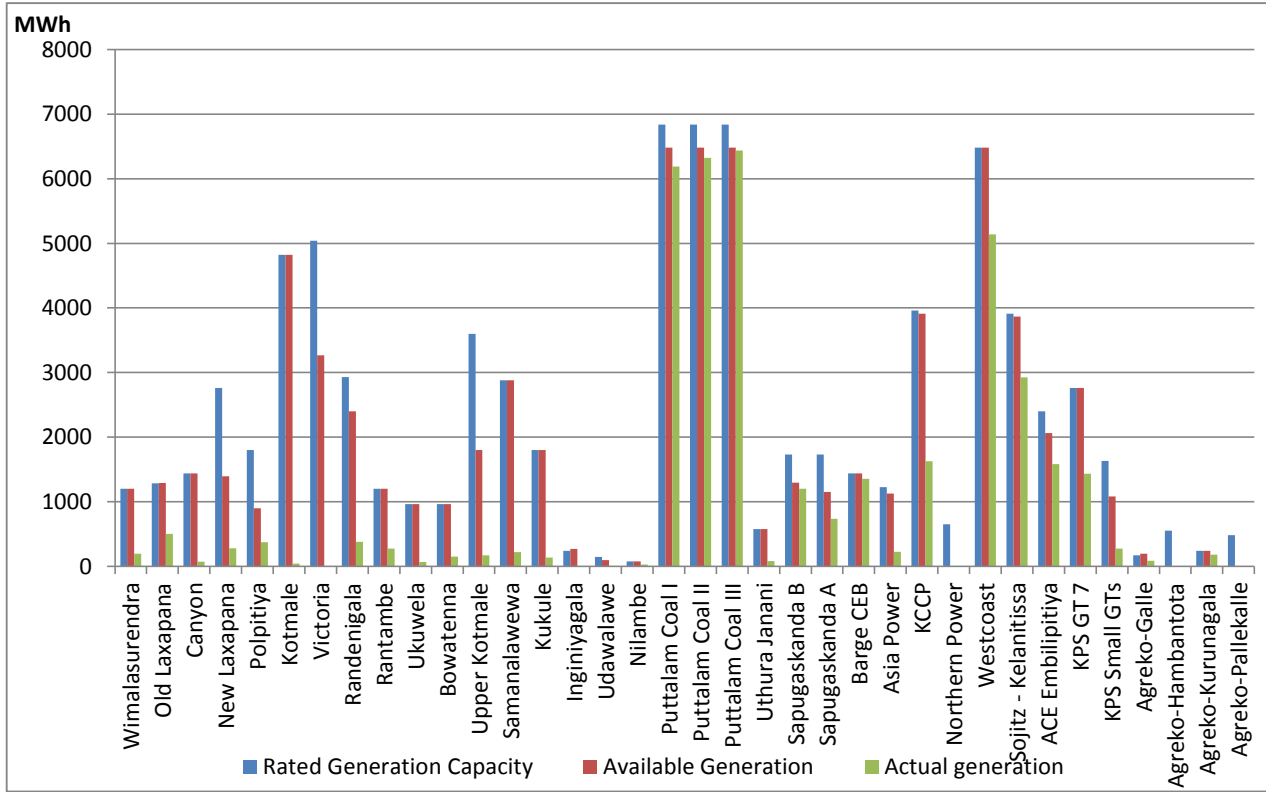
### For Current Month

Category	Dispatch (MWh)	Percentage
CEB Hydro	69,820.0	9.49%
CEB Thermal Oil	131,160.0	17.83%
CEB Coal	384,630.0	52.28%
IPP Thermal	138,920.0	18.88%
SPP Wind& Solar	11,130.0	1.51%
<b>Total</b>	<b>735,660.0</b>	

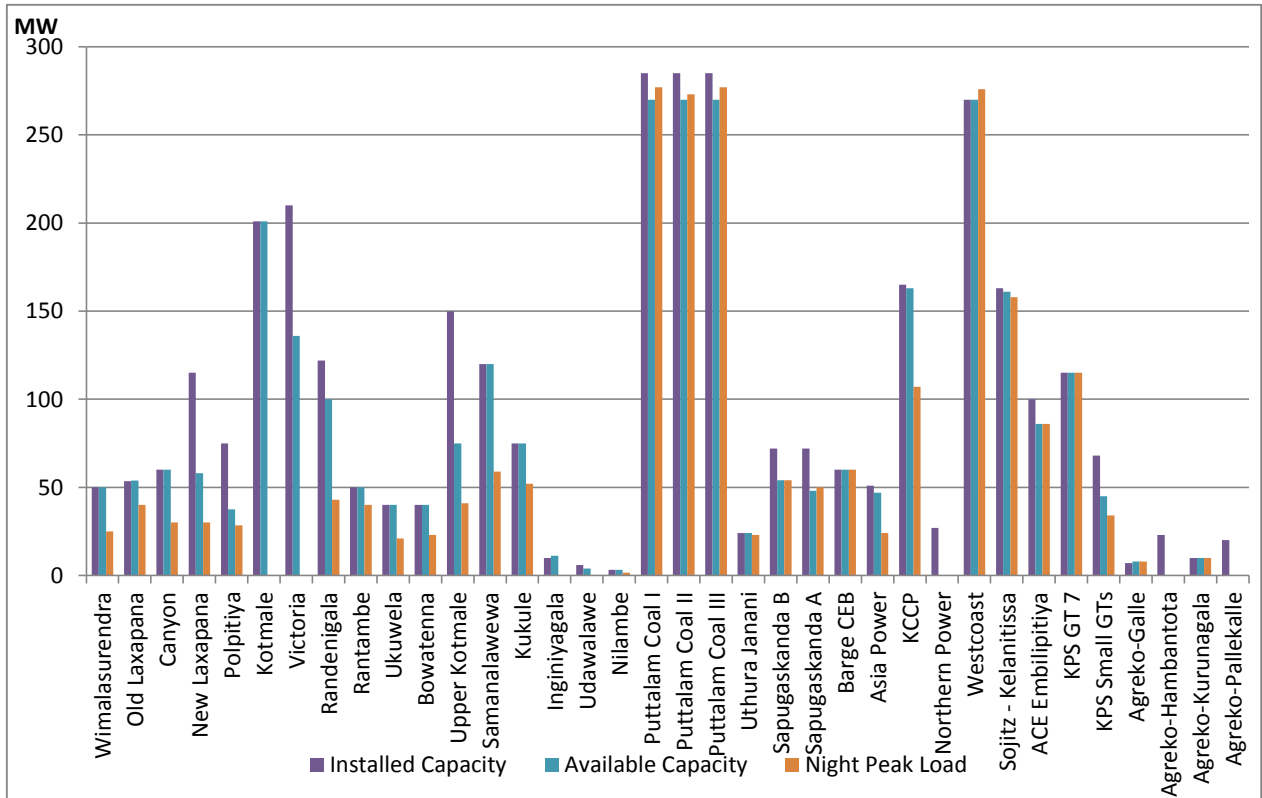
### For Current Year

Category	Dispatch (GWh)	Percentage
CEB Hydro	203	6.79%
CEB Thermal Oil	364	12.18%
CEB Coal	870	29.13%
IPP Thermal	400	13.37%
Renewable	1,152	38.54%
<b>Total</b>	<b>2,988</b>	

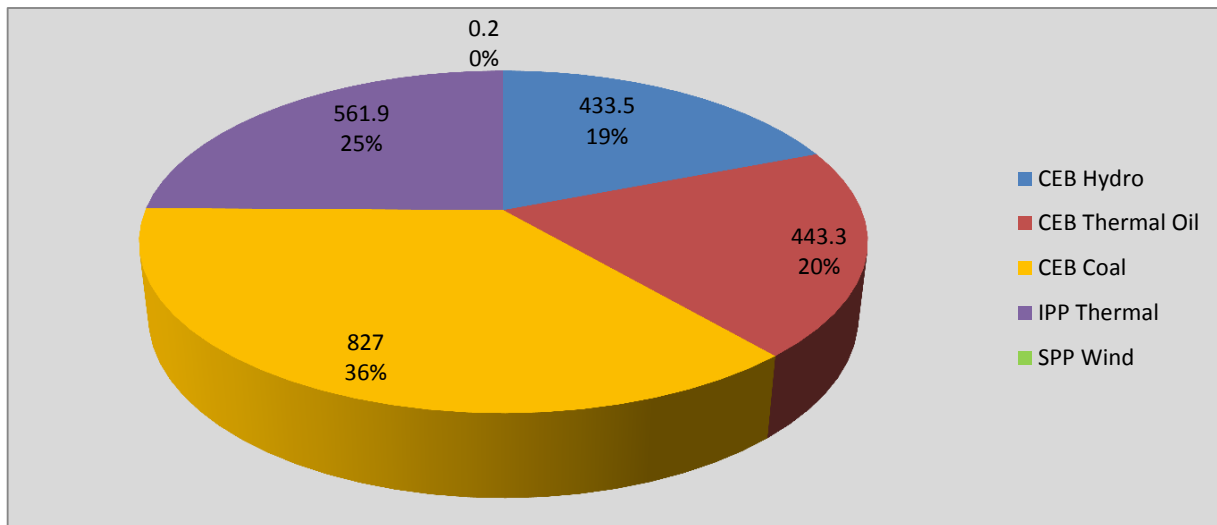
## Plant Dispatch on February 20, 2017



## Plant Loading at Night Peak on February 20, 2017



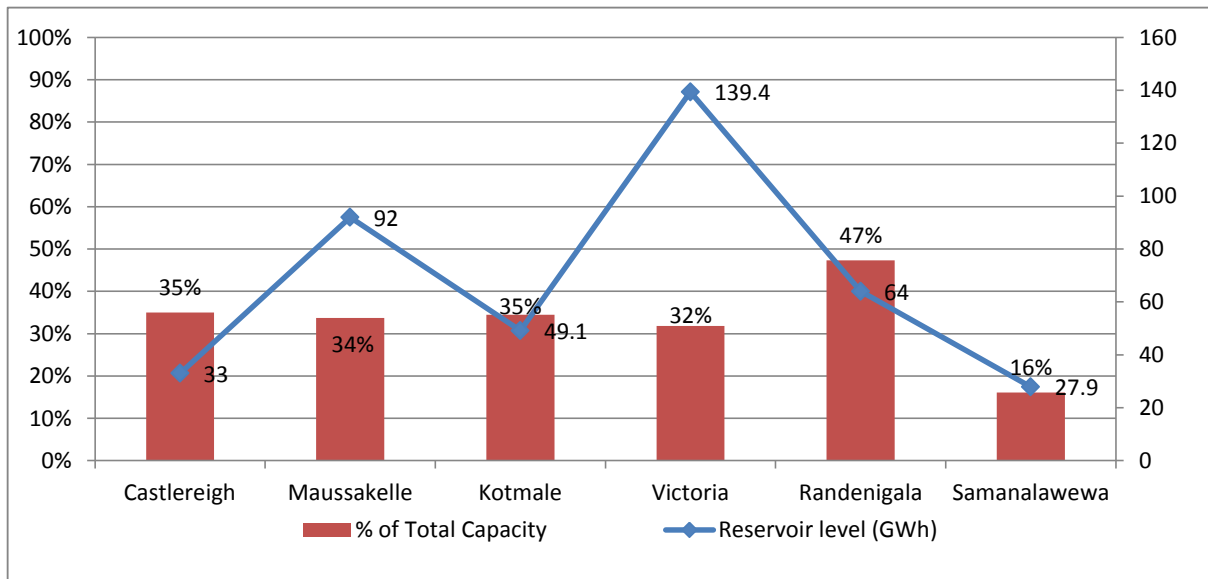
## Contribution to the Night Peak in MW



Night Peak	2,265.9 MW
Day Peak	1,905.3 MW
Minimum Demand	982.0 MW

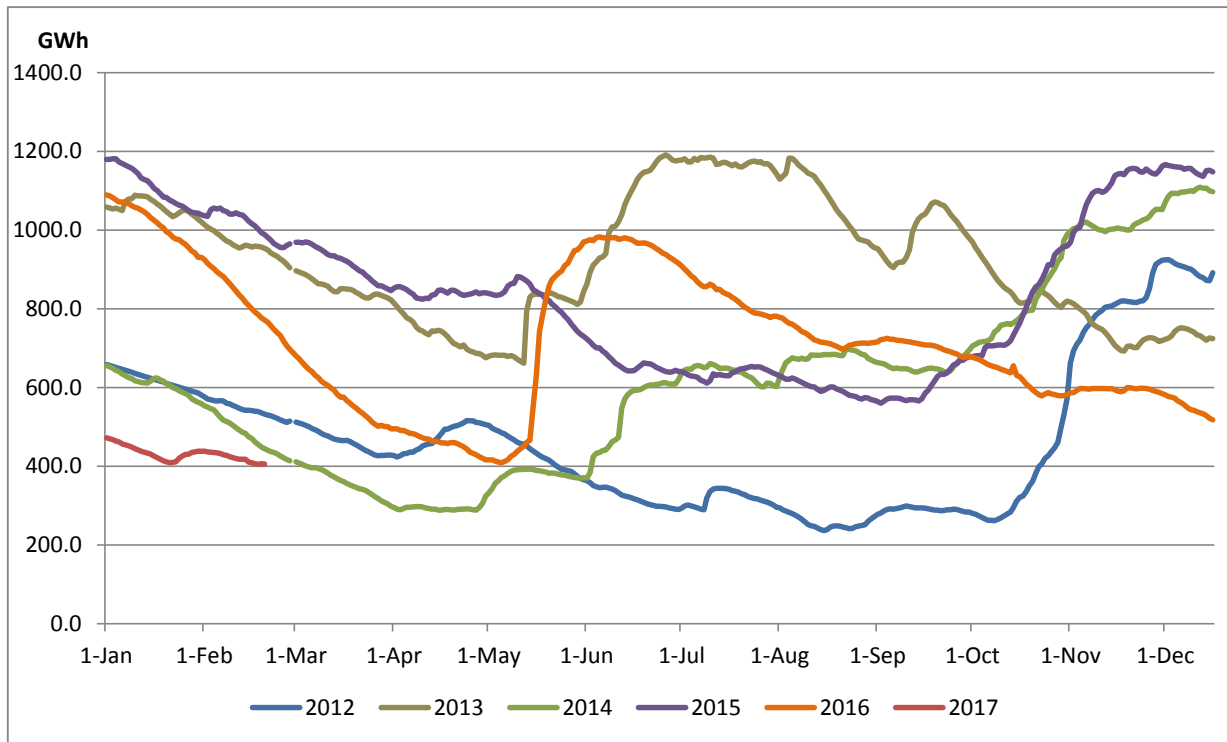
**Note:** Contribution from other SPPs (Mini Hydro, Solar and Biomass) is not included

## Reservoir Levels - as at 06.00 Hr on February 21, 2017

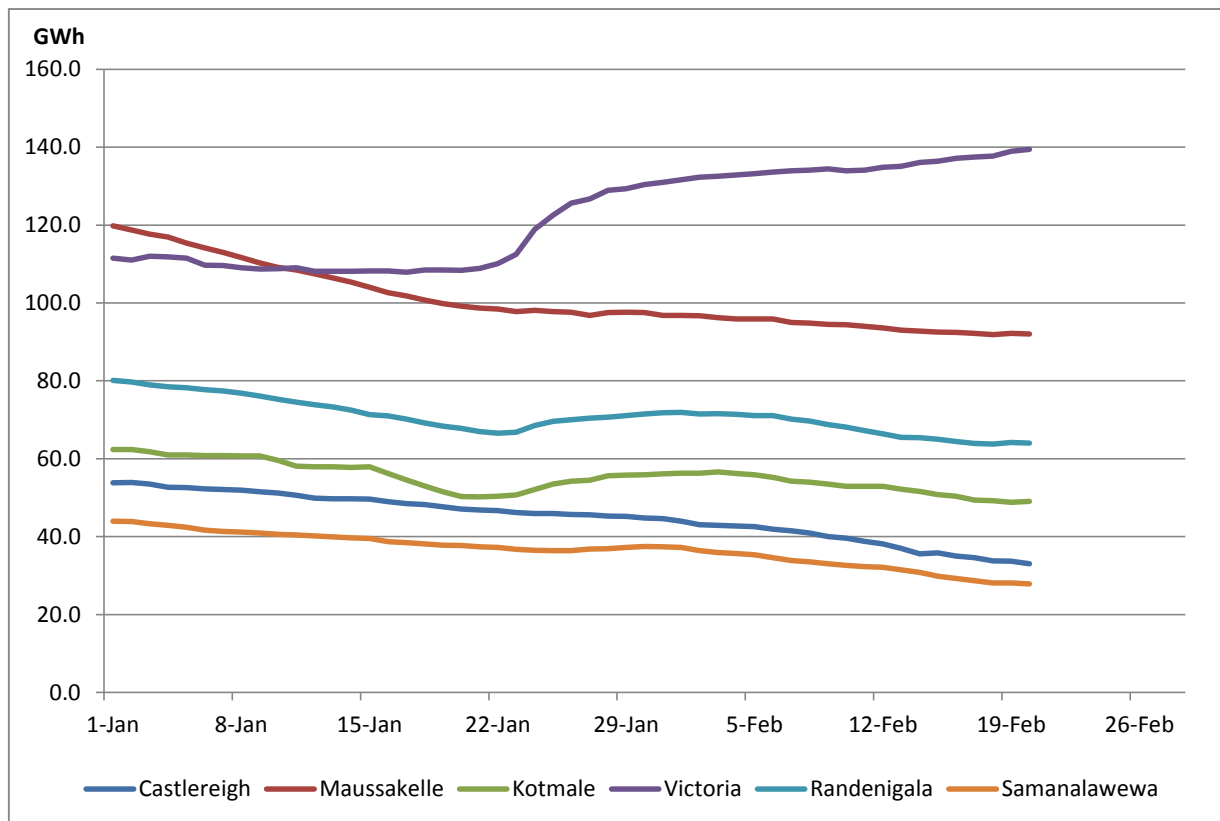


Total Reservoir Level(GWh)	405.5
% of Total capacity	32.22

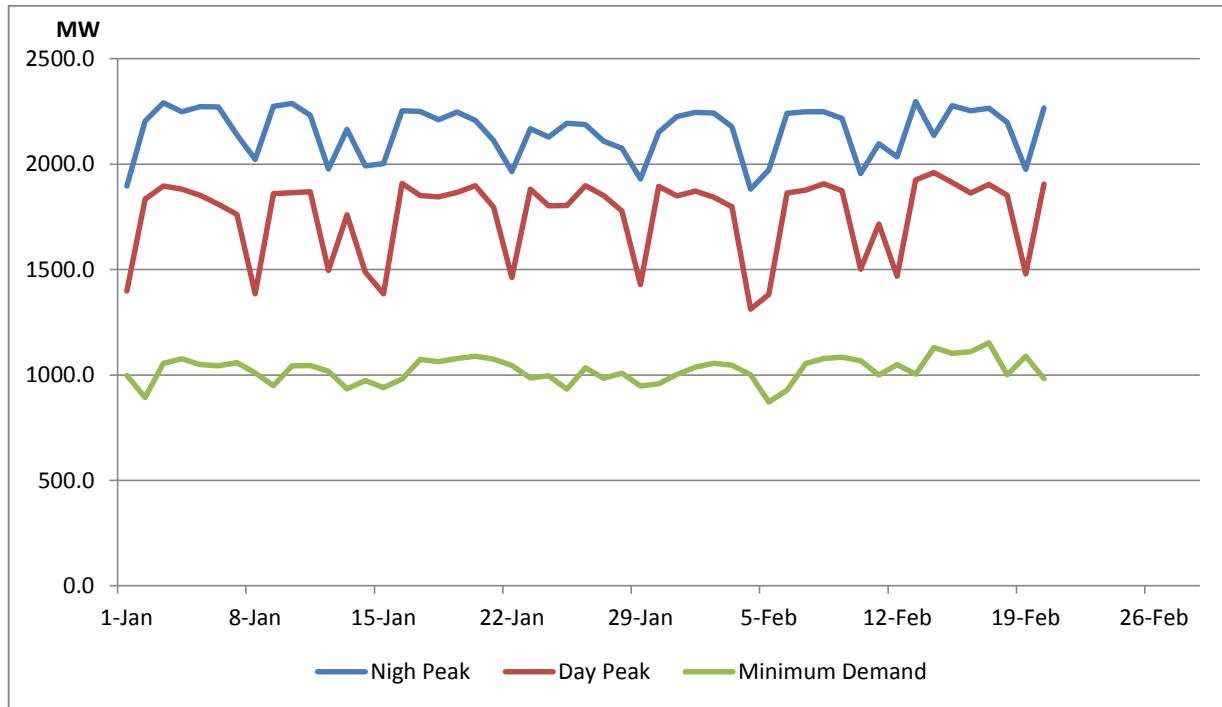
## Comparison of Total Reservoir Storage Levels with Past Years



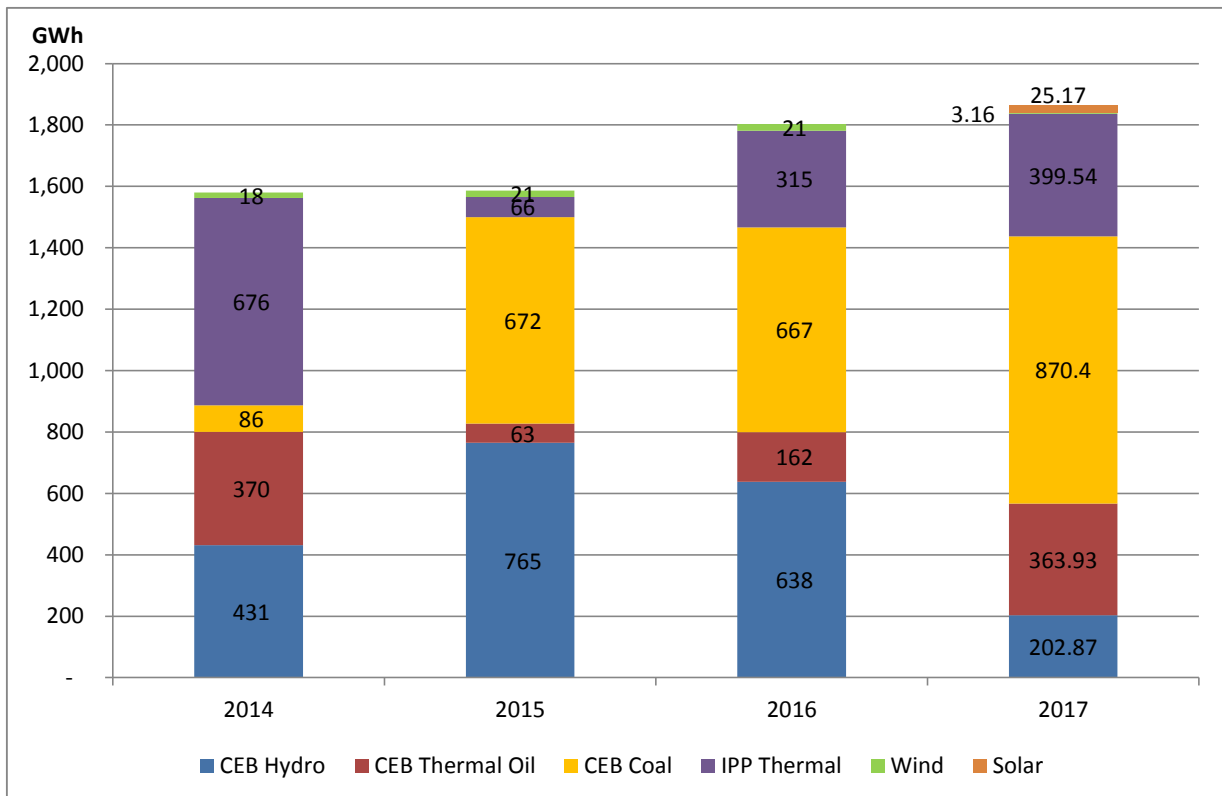
## Variation of Major Hydro Reservoir Levels in GWh- 2017



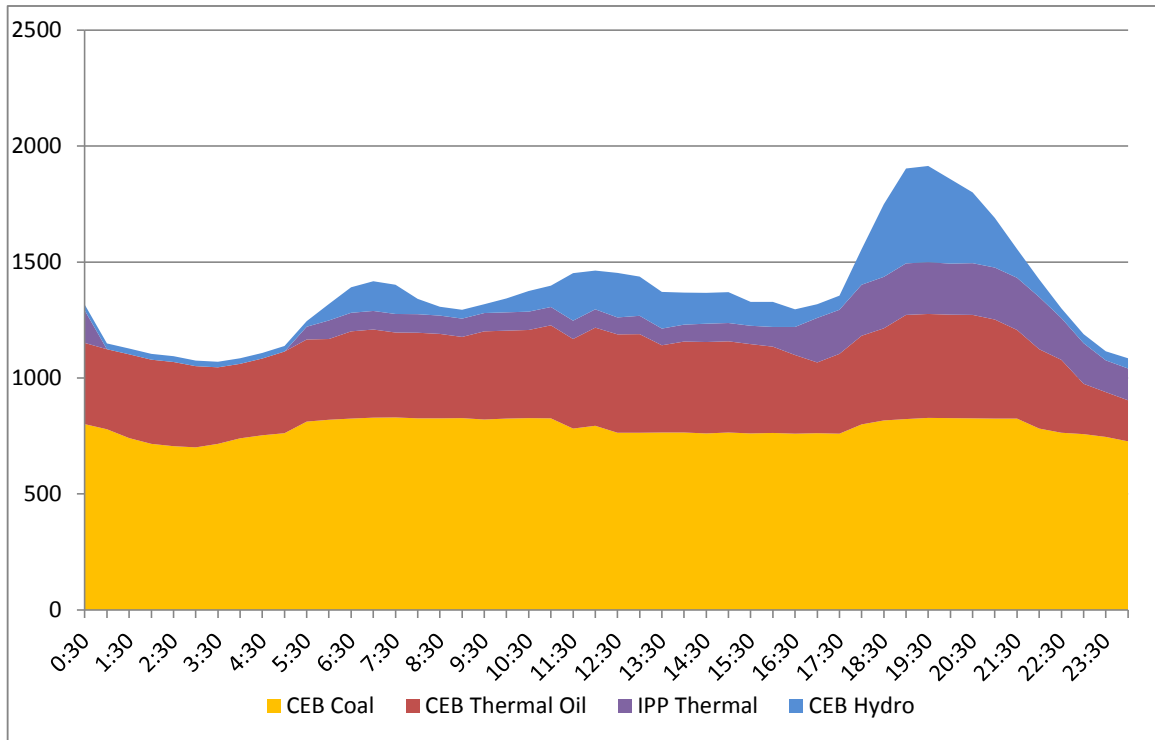
## Variation of Demand 2017



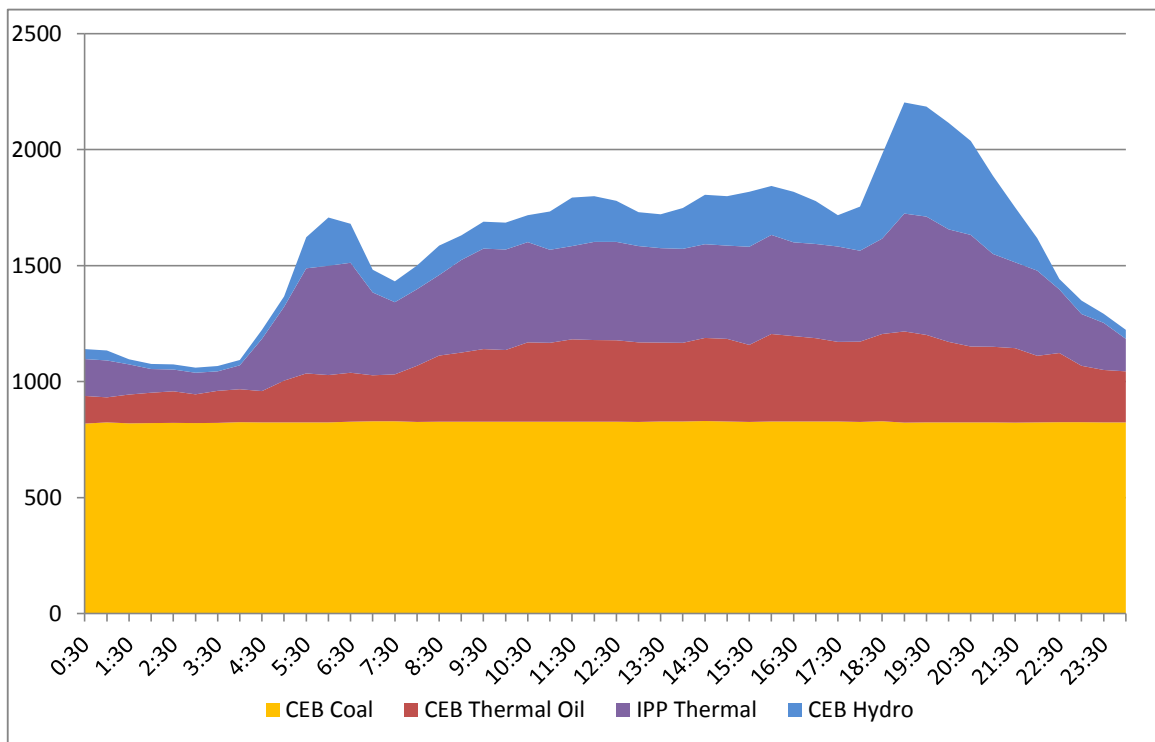
## Comparison of Cumulative Dispatch from January 1 - February 20, 2017



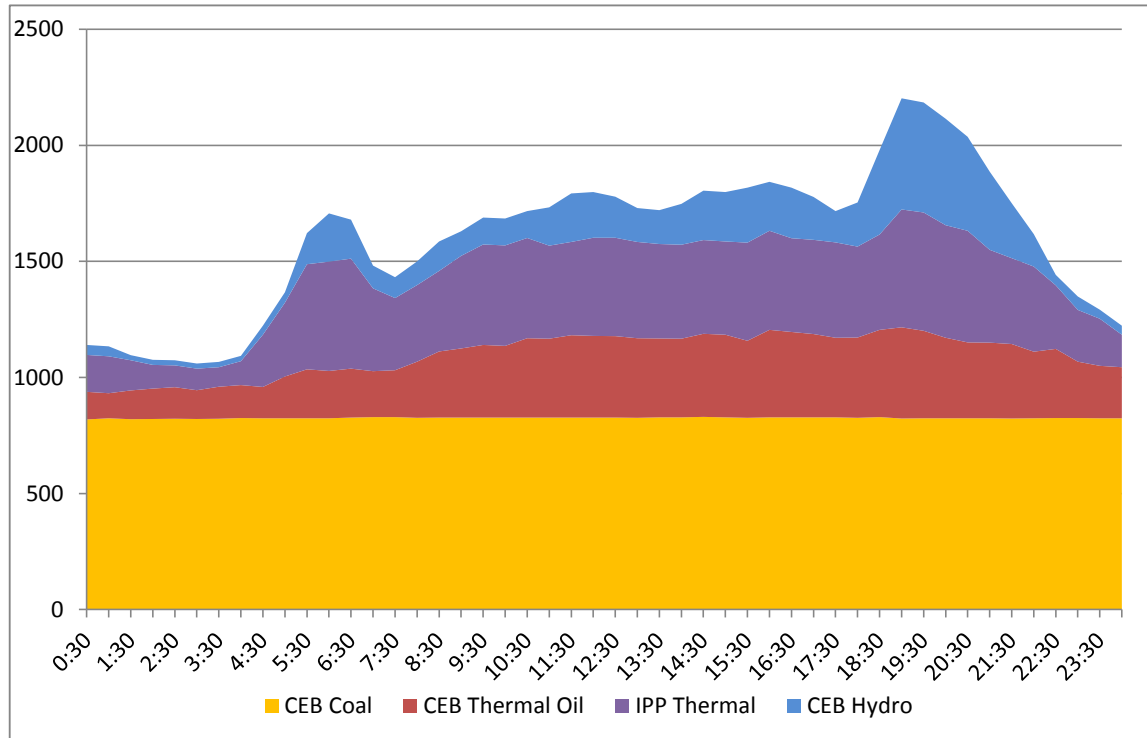
## Daily Load Curve - February 19, 2017



## Daily Load Curve February 18, 2017



## Daily Load Curve February 16, 2017



Power Station	Capacity (MW)	Primary Fuel
<b>CEB Hydro</b>		
Victoria	210	
Ukuwela	40	
Kotmale	201	
Randenigala	122	
Rantambe	49	
Bowatenna	40	
Nilambe	3.2	
Upper Kotmale	150	
Old Laxapana	50	
New Laxapana	115	
Polpitiya	75	
Wimalasurendra	50	
Canyon	60	
Samanalawewa	120	
Kukuleganga	75	
Inginiyagala	10	
Udawalawe	6	
<b>CEB Thermal</b>		
Sapugaskanda 1	72	Heavy Fuel
Sapugaskanda 2	72	Heavy Fuel
Kelanitissa Small Gas Turb	68	Auto Diesel
GT 7 - Kelanitissa	115	Auto Diesel
Kelanitissa CCY	165	Naptha & Diesel
Lakvijaya (Puttalam Coal)	285	Coal



<b>Lakvijaya (Puttalam Coal)</b>	285	Coal
<b>Lakvijaya (Puttalam Coal)</b>	285	Coal
<b>Uthuru Janani</b>	24	Heavy Fuel
<b>Barge CEB</b>	60	Furnace Oil
<b>Private Thermal (IPPs)</b>		
<b>Asia Power</b>	51	Heavy Fuel
<b>Sojitz - Kelanitissa</b>	163	Auto Diesel
<b>West Coast</b>	270	Low Sulphur Furnace oil
<b>Northern Power</b>	27	Auto Diesel
<b>ACE Embilipitiya</b>	100	Furnace Oil