

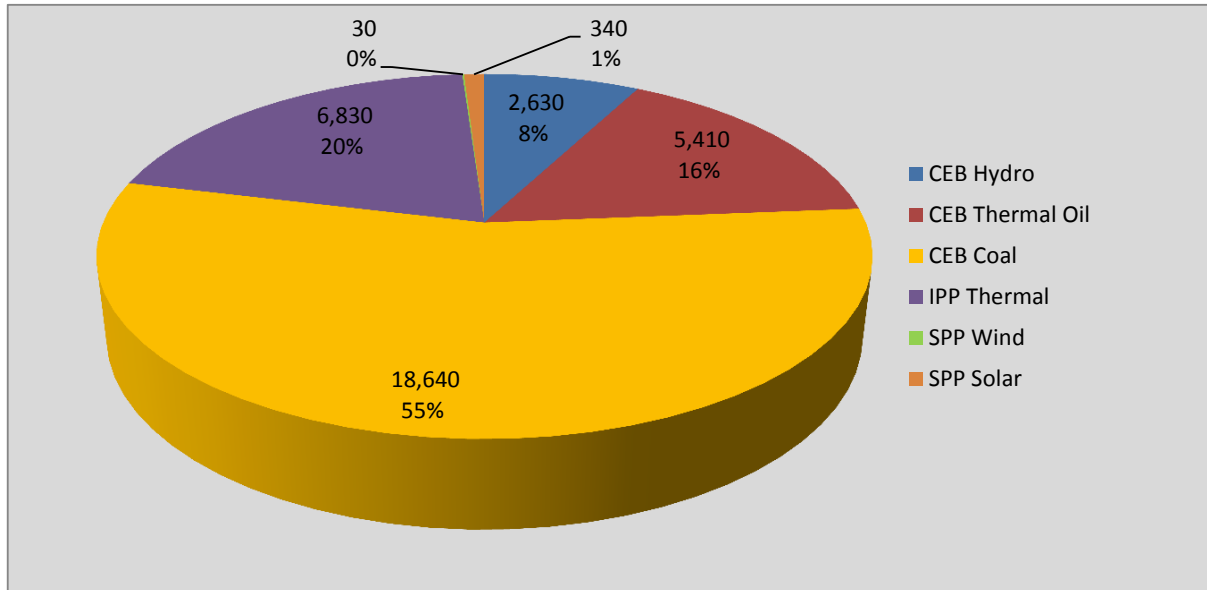
Generation and Reservoirs Statistics

February 19, 2017



PUBLIC UTILITIES COMMISSION OF SRI LANKA

Daily Generation Mix in MWh



Total Generation 33,880 MWh

Note: Generation from other SPPs (Mini Hydro, Solar and Biomass) is not included

Cumulative Dispatch

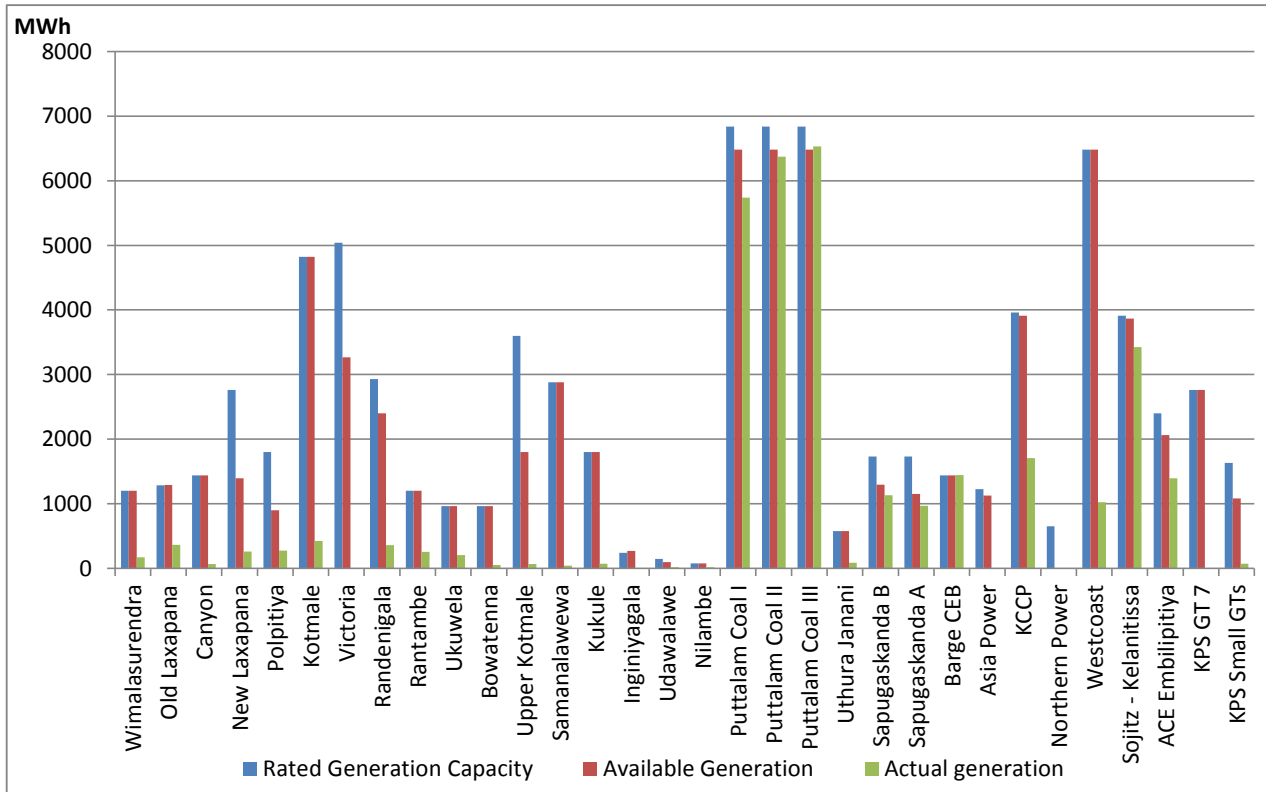
For Current Month

Category	Dispatch (MWh)	Percentage
CEB Hydro	66,950.0	9.61%
CEB Thermal Oil	124,460.0	17.86%
CEB Coal	365,680.0	52.47%
IPP Thermal	128,790.0	18.48%
SPP Wind& Solar	11,020.0	1.58%
Total	696,900.0	

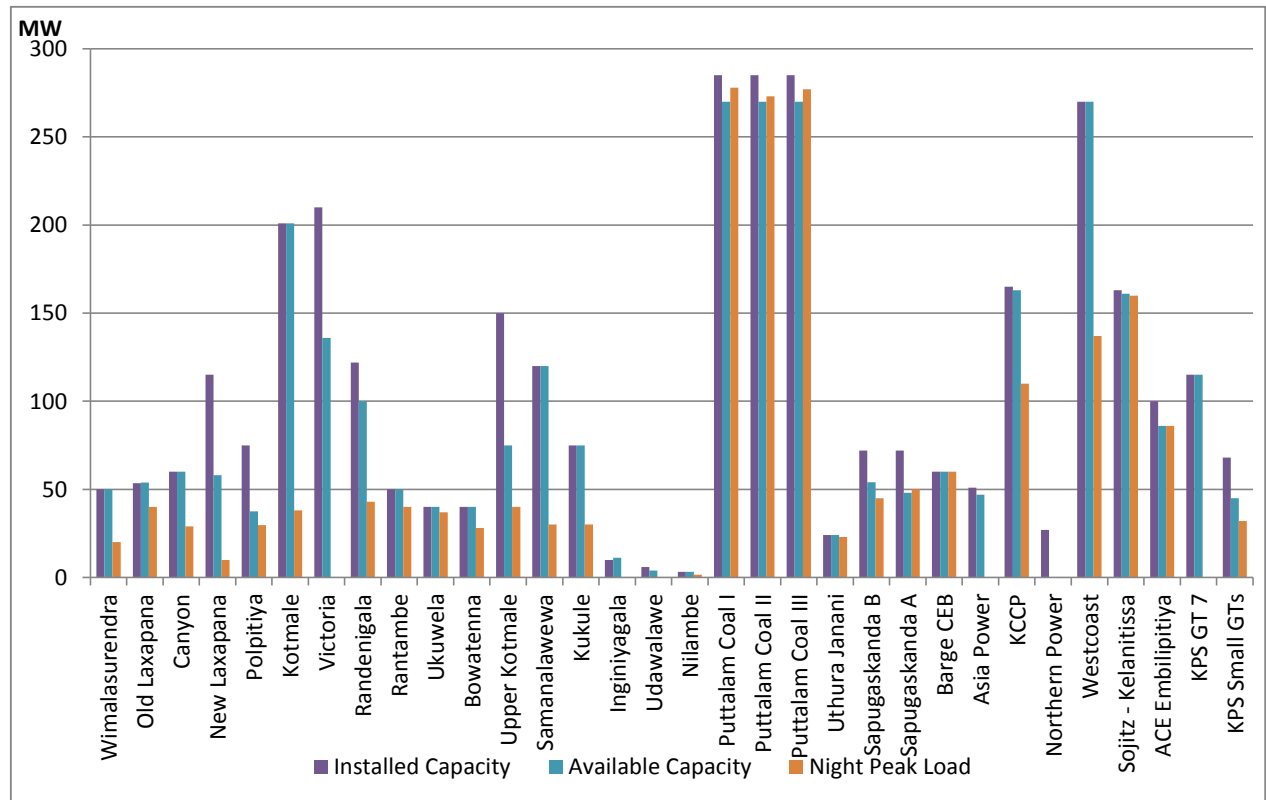
For Current Year

Category	Dispatch (GWh)	Percentage
CEB Hydro	200	6.78%
CEB Thermal Oil	357	12.11%
CEB Coal	851	28.87%
IPP Thermal	389	13.20%
Renewable	1,151	39.04%
Total	2,950	

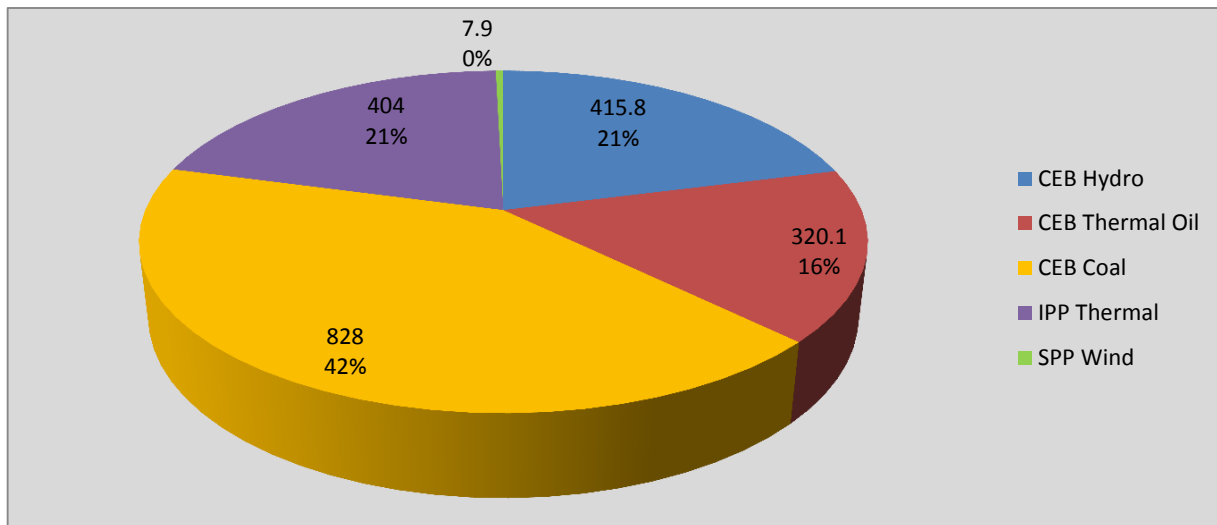
Plant Dispatch on February 19, 2017



Plant Loading at Night Peak on February 19, 2017



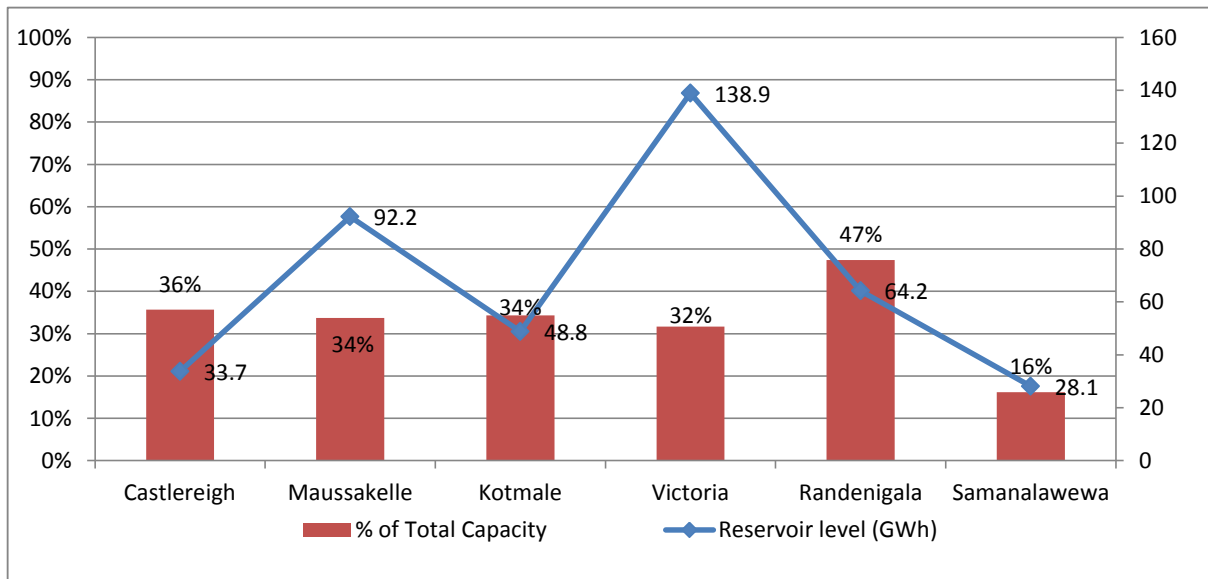
Contribution to the Night Peak in MW



Night Peak	1,975.8 MW
Day Peak	1,479.4 MW
Minimum Demand	1,089.3 MW

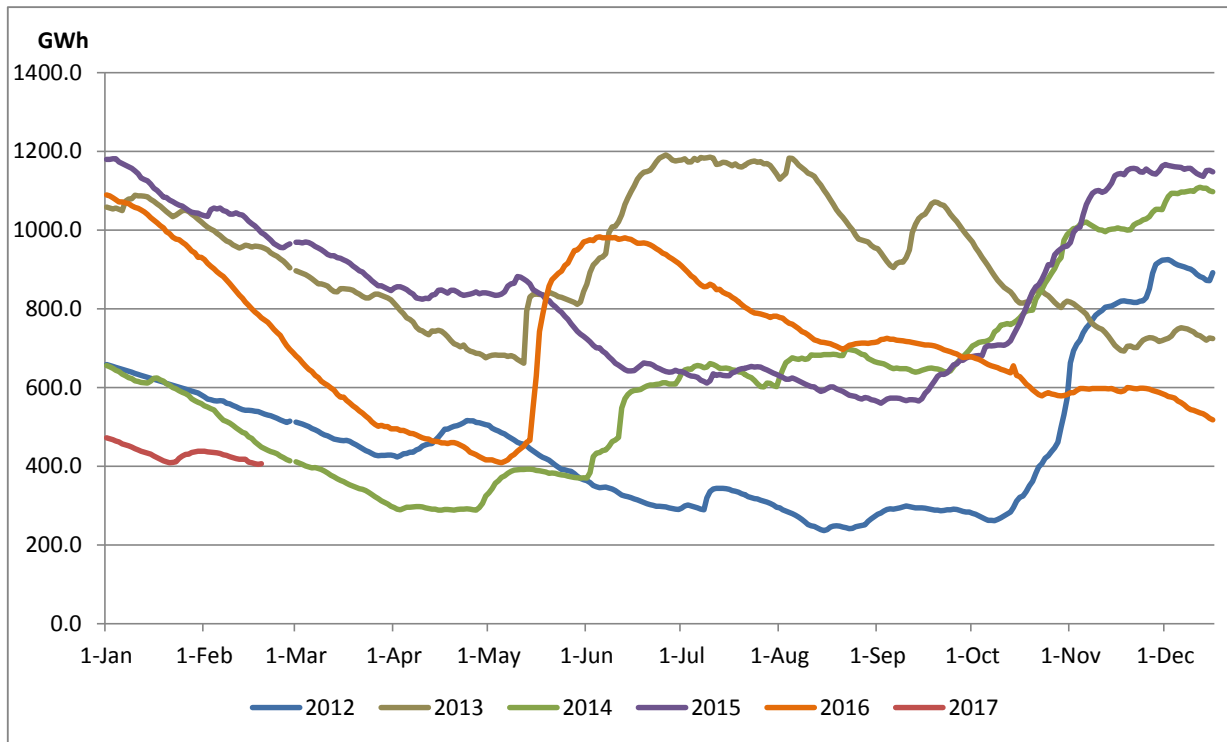
Note: Contribution from other SPPs (Mini Hydro, Solar and Biomass) is not included

Reservoir Levels - as at 06.00 Hr on February 20, 2017

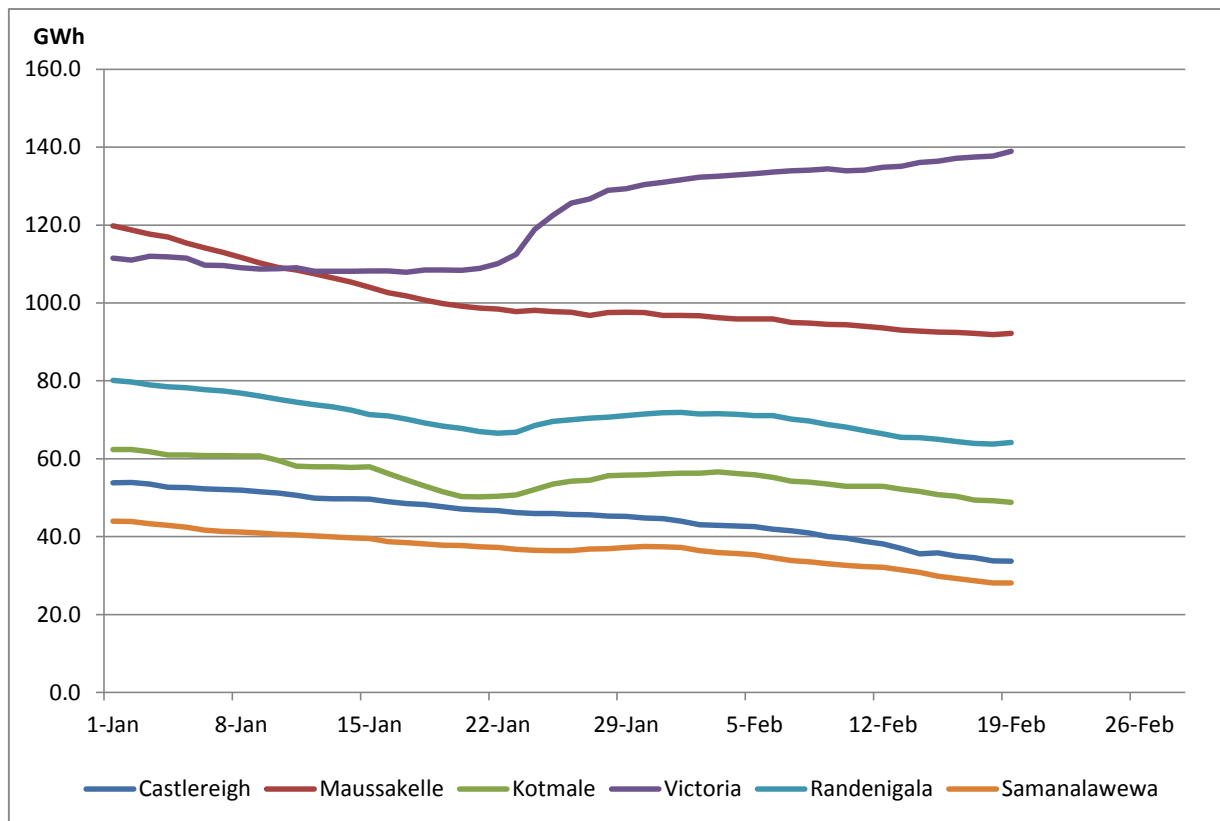


Total Reservoir Level(GWh)	405.9
% of Total capacity	32.25

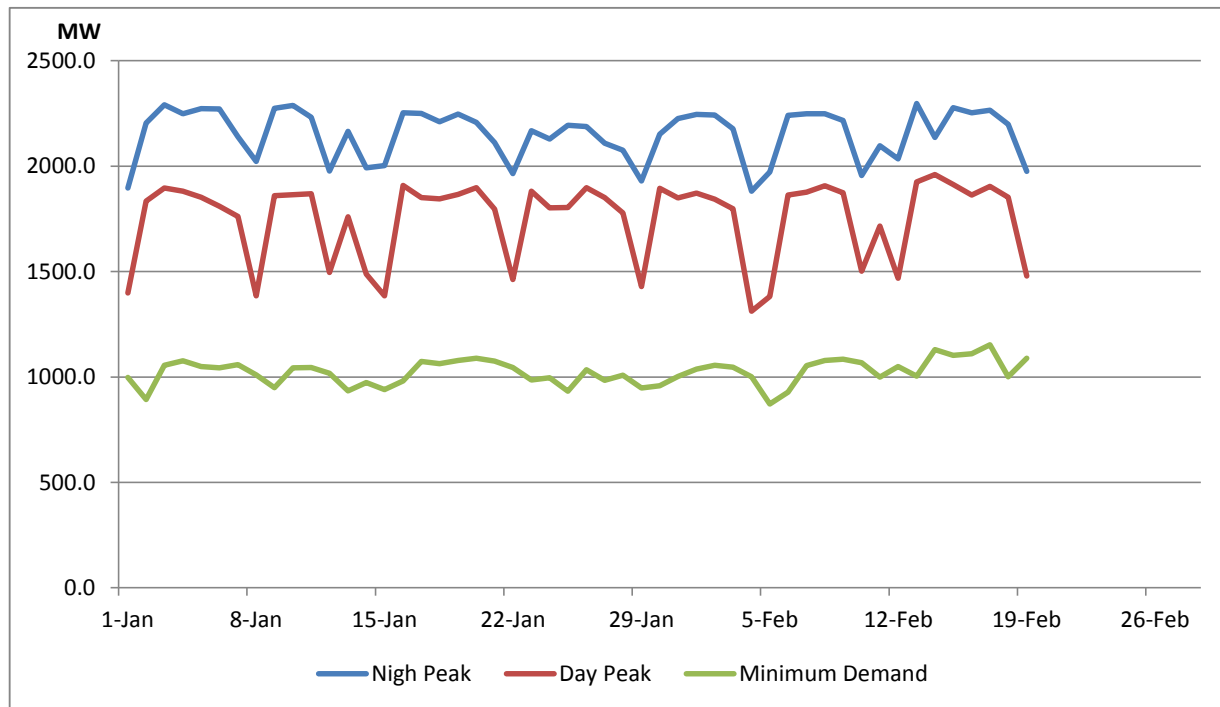
Comparison of Total Reservoir Storage Levels with Past Years



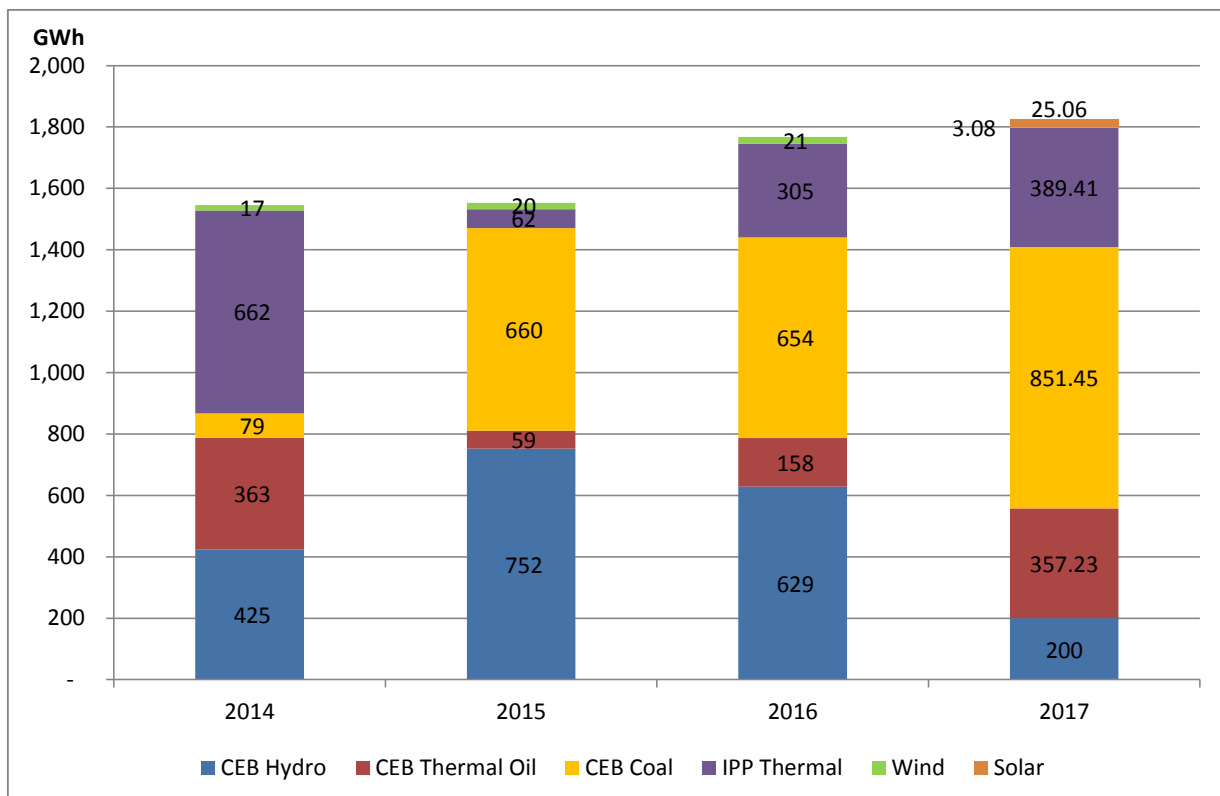
Variation of Major Hydro Reservoir Levels in GWh- 2017



Variation of Demand 2017



Comparison of Cumulative Dispatch from January 1 - February 19, 2017



Daily Load Curve - February 18, 2017

Will be published in Generation Report February 20, 2017

Power Station	Capacity (MW)	Primary Fuel
CEB Hydro		
Victoria	210	
Ukuwela	40	
Kotmale	201	
Randenigala	122	
Rantambe	49	
Bowatenna	40	
Nilambe	3.2	
Upper Kotmale	150	
Old Laxapana	50	
New Laxapana	115	
Polpitiya	75	
Wimalasurendra	50	
Canyon	60	
Samanalawewa	120	
Kukuleganga	75	
Inginiyagala	10	
Udawalawe	6	
CEB Thermal		
Sapugaskanda 1	72	Heavy Fuel
Sapugaskanda 2	72	Heavy Fuel
Kelanitissa Small Gas Turb	68	Auto Diesel
GT 7 - Kelanitissa	115	Auto Diesel
Kelanitissa CCY	165	Naptha & Diesel
Lakvijaya (Puttalam Coal)	285	Coal
Lakvijaya (Puttalam Coal)	285	Coal
Lakvijaya (Puttalam Coal)	285	Coal
Uthuru Janani	24	Heavy Fuel
Barge CEB	60	Furnace Oil
Private Thermal (IPPs)		
Asia Power	51	Heavy Fuel
Sojitz - Kelanitissa	163	Auto Diesel
West Coast	270	Low Sulphur Furnace oil
Northern Power	27	Auto Diesel
ACE Embilipitiya	100	Furnace Oil