

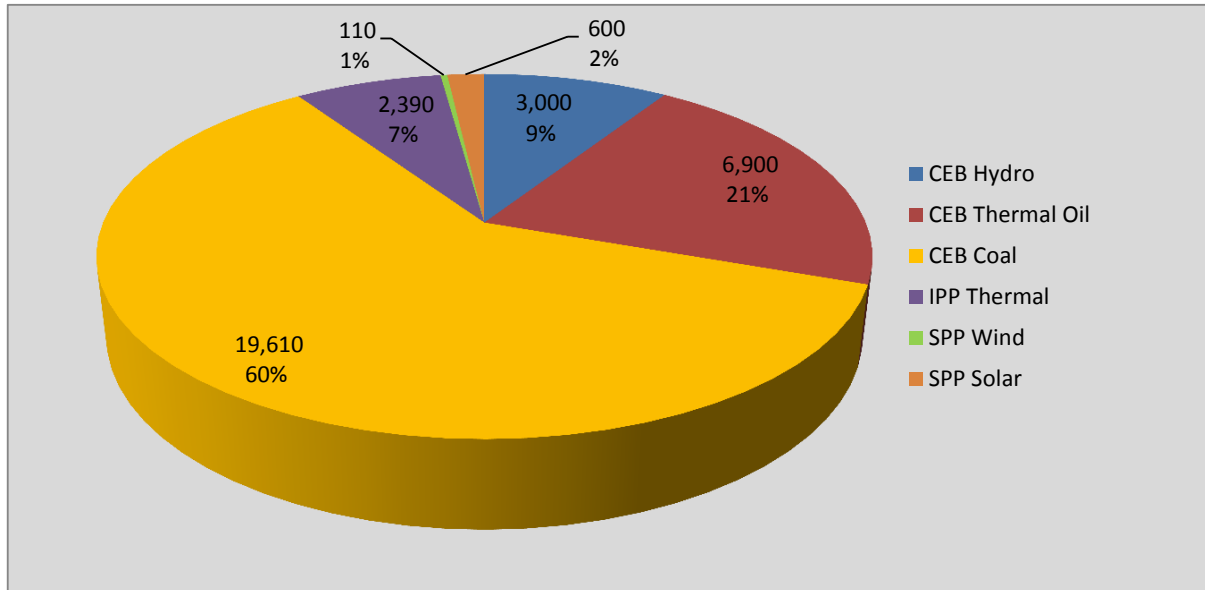
Generation and Reservoirs Statistics

February 12, 2017



PUBLIC UTILITIES COMMISSION OF SRI LANKA

Daily Generation Mix in MWh



Total Generation 32,620 MWh

Note: Generation from other SPPs (Mini Hydro, Solar and Biomass) is not included

Cumulative Dispatch

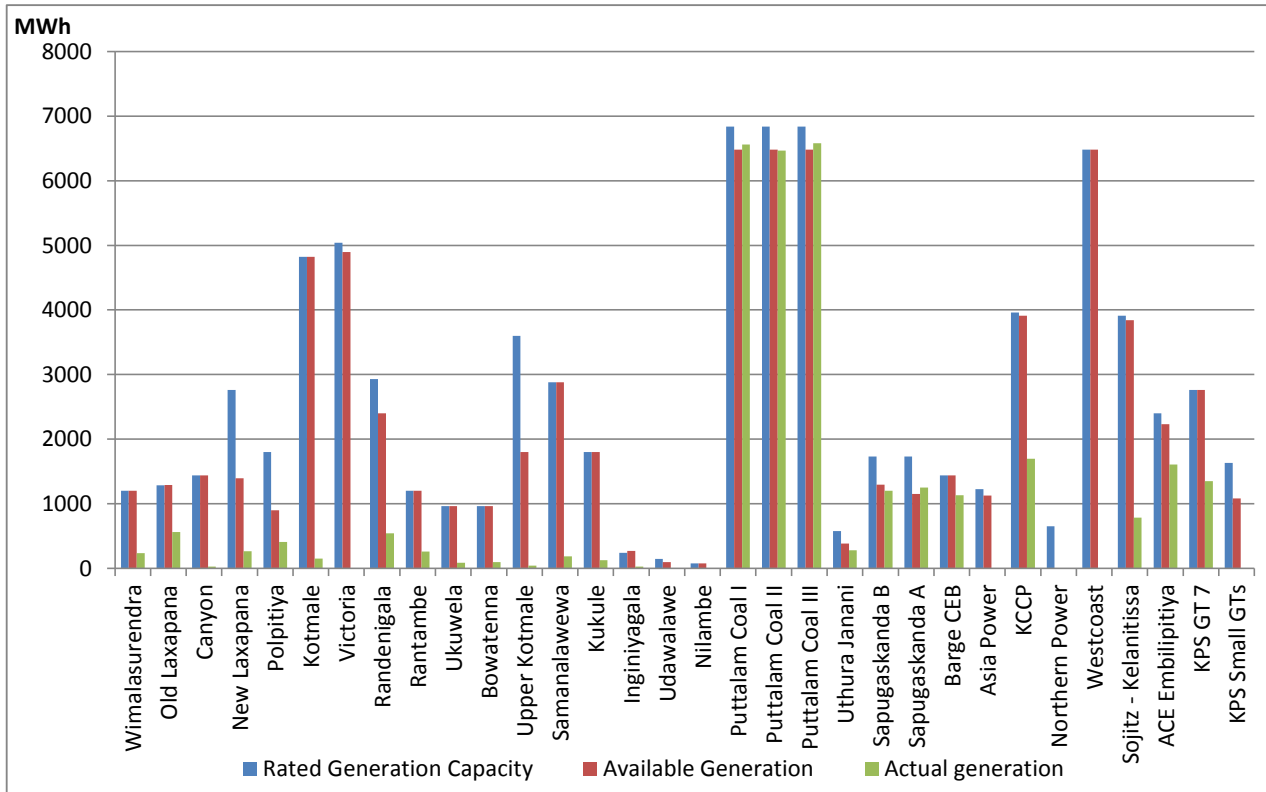
For Current Month

| Category | Dispatch (MWh) | Percentage |
|-----------------|------------------|------------|
| CEB Hydro | 38,930.0 | 9.07% |
| CEB Thermal Oil | 78,810.0 | 18.37% |
| CEB Coal | 232,410.0 | 54.17% |
| IPP Thermal | 72,970.0 | 17.01% |
| SPP Wind& Solar | 5,930.0 | 1.38% |
| Total | 429,050.0 | |

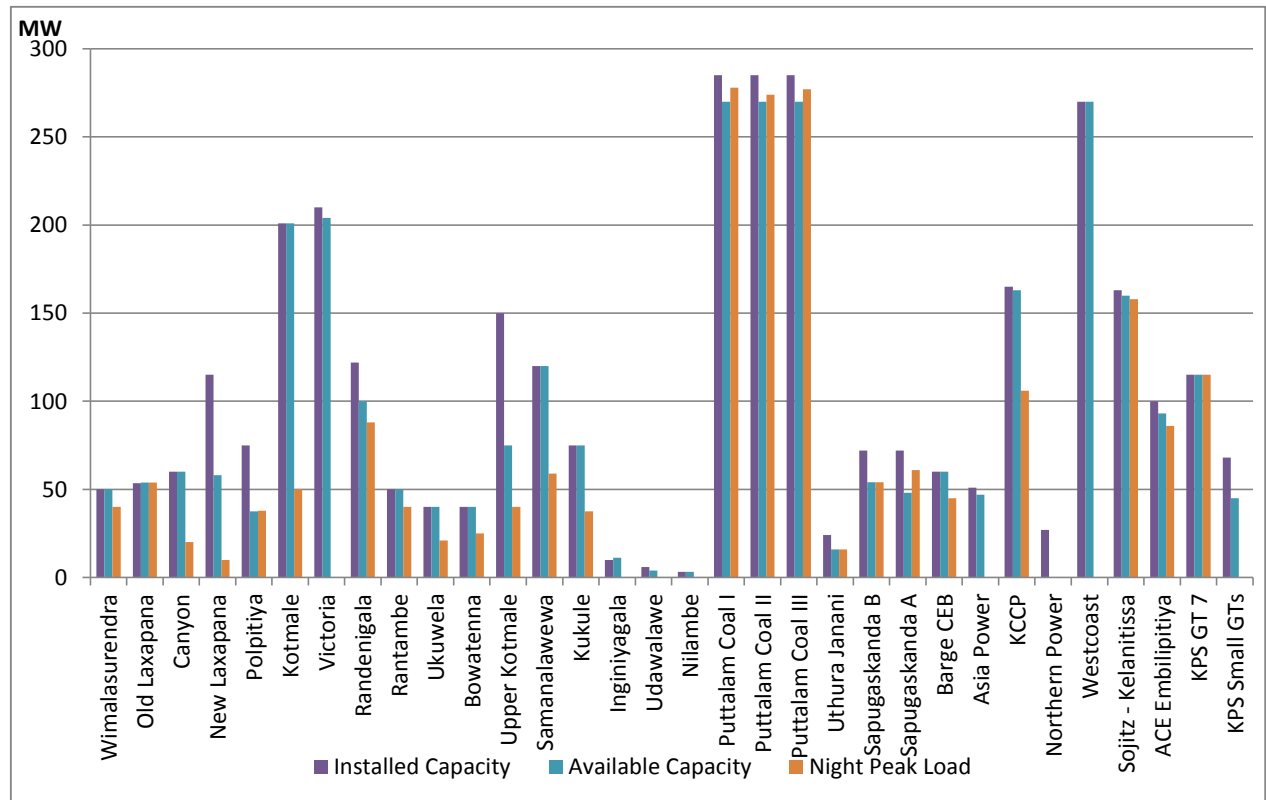
For Current Year

| Category | Dispatch (GWh) | Percentage |
|-----------------|----------------|------------|
| CEB Hydro | 172 | 6.41% |
| CEB Thermal Oil | 312 | 11.62% |
| CEB Coal | 718 | 26.78% |
| IPP Thermal | 334 | 12.44% |
| Renewable | 1,146 | 42.75% |
| Total | 2,682 | |

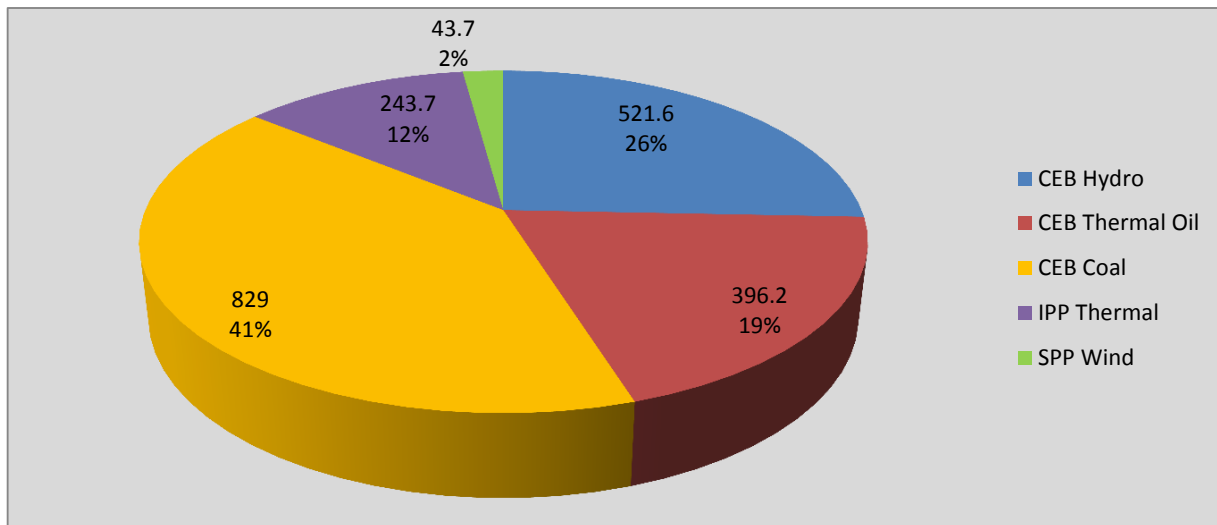
Plant Dispatch on February 12, 2017



Plant Loading at Night Peak on February 12, 2017



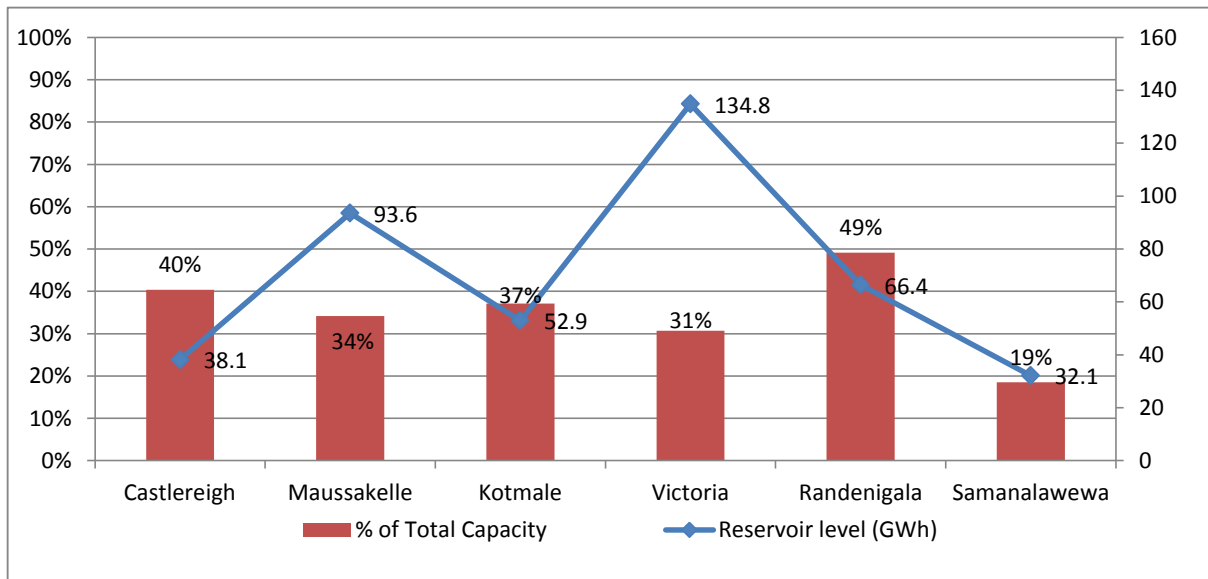
Contribution to the Night Peak in MW



Night Peak 2,034.2 MW
 Day Peak 1,467.6 MW
 Minimum Demand 1,049.0 MW

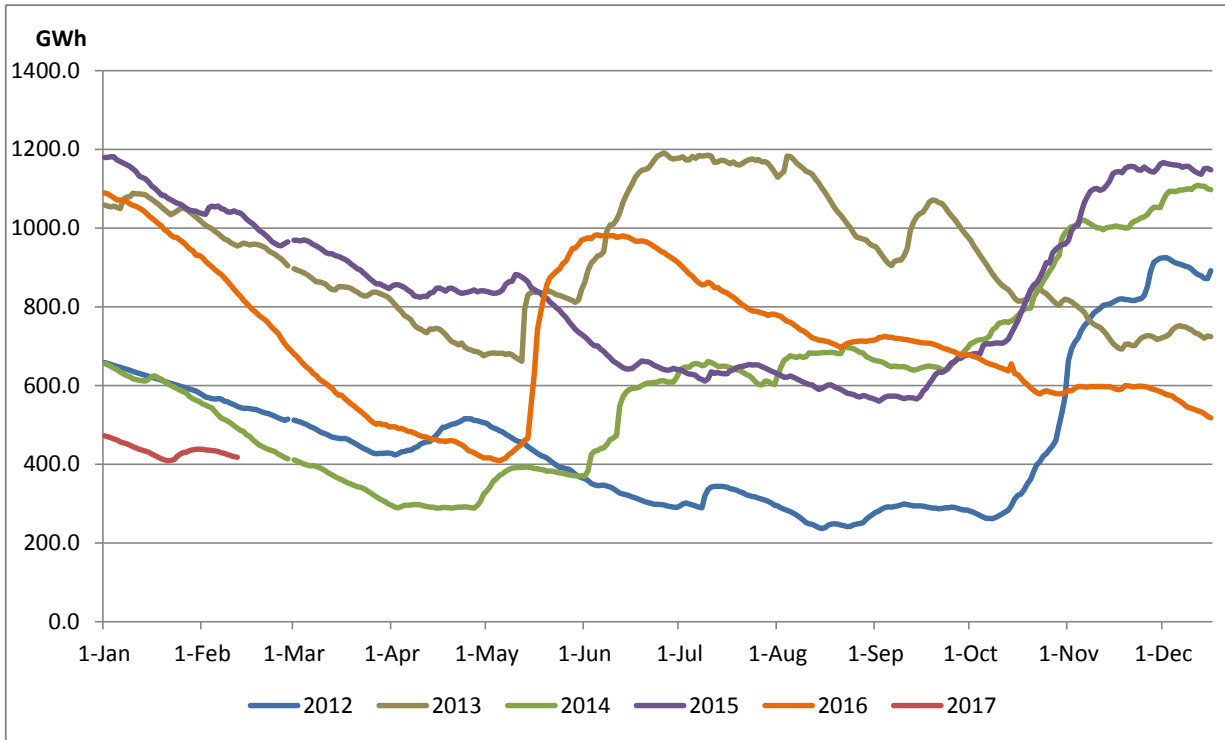
Note: Contribution from other SPPs (Mini Hydro, Solar and Biomass) is not included

Reservoir Levels - as at 06.00 Hr on February 13, 2017

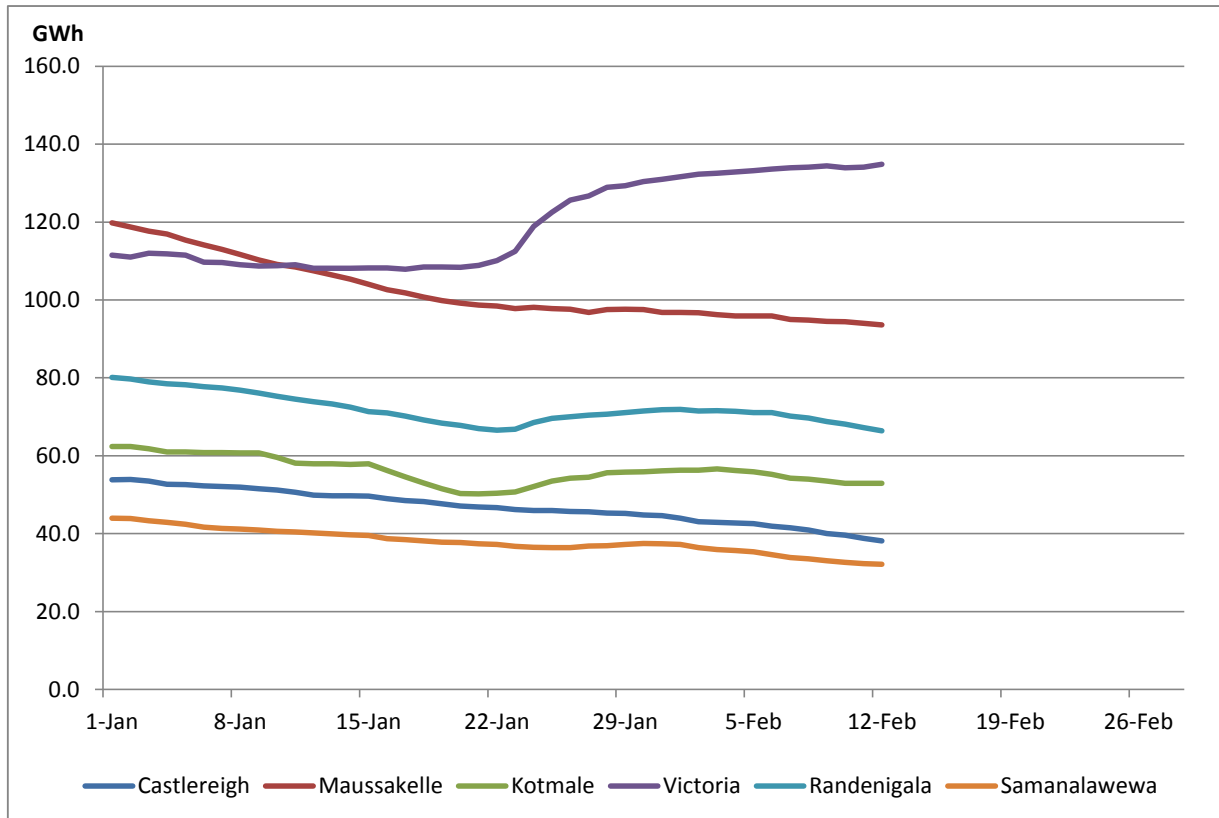


Total Reservoir Level(GWh) 417.8
 % of Total capacity 33.20

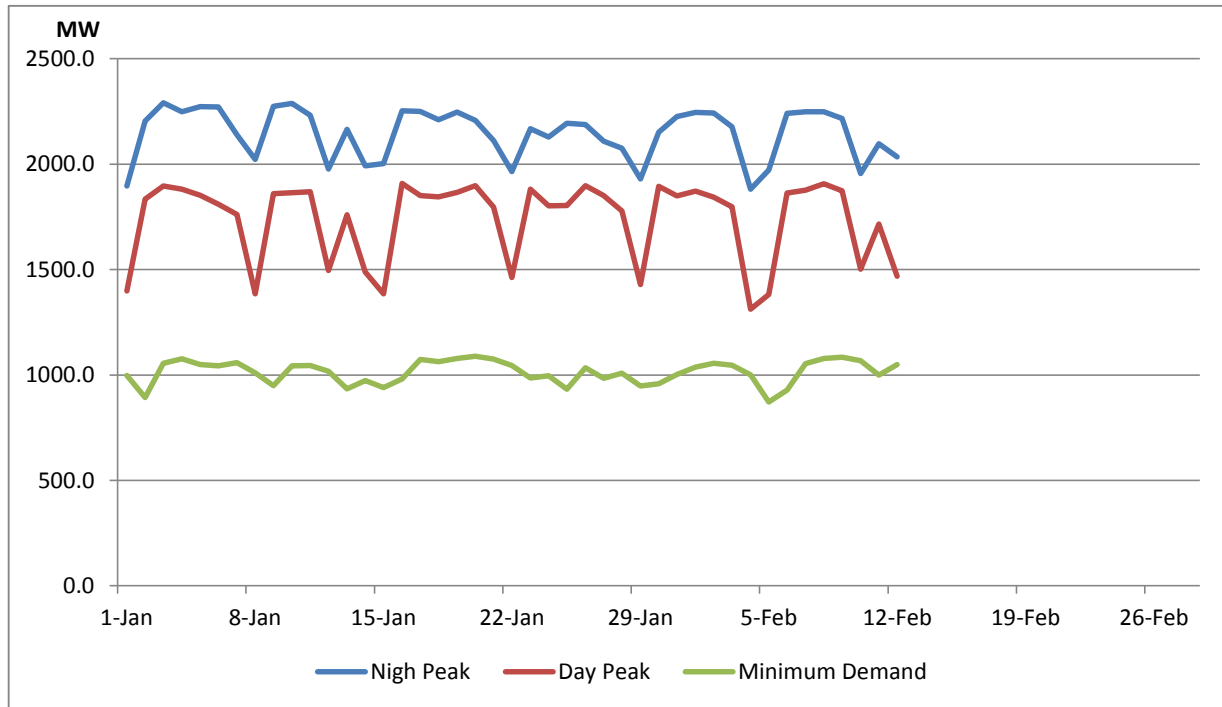
Comparison of Total Reservoir Storage Levels with Past Years



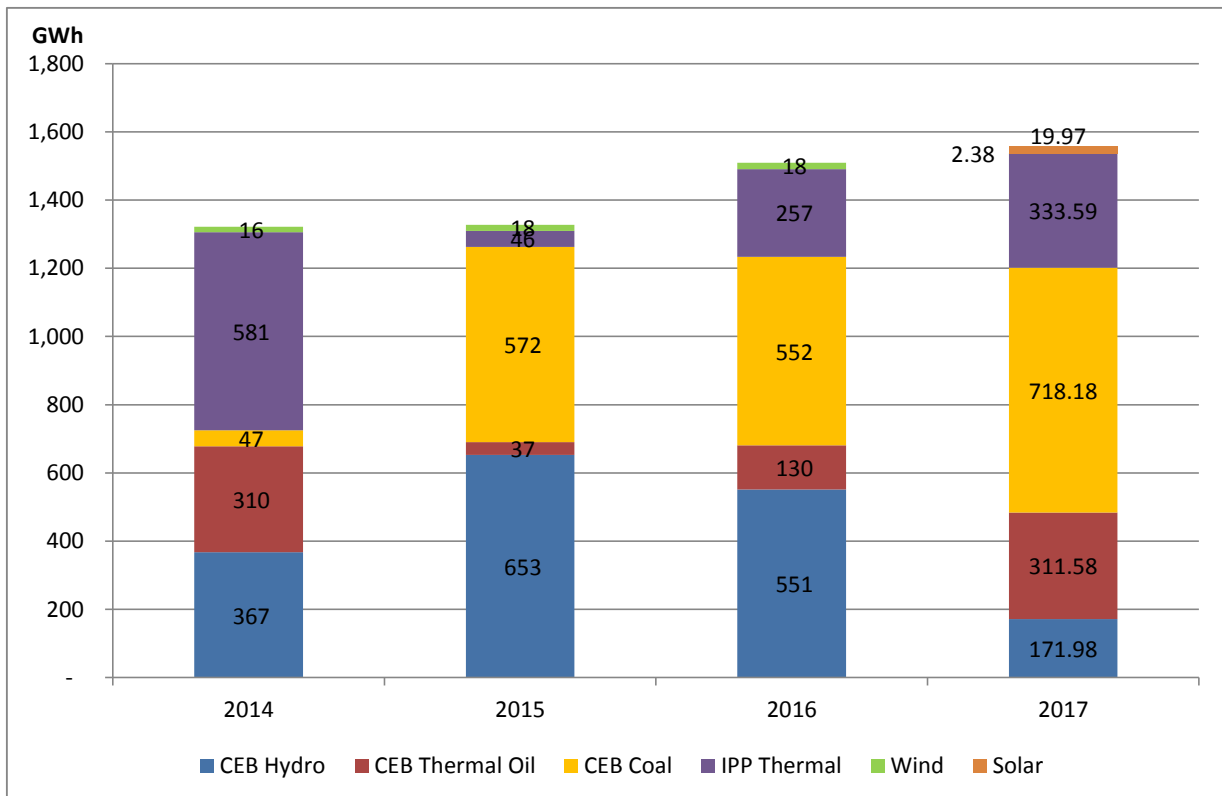
Variation of Major Hydro Reservoir Levels in GWh- 2017



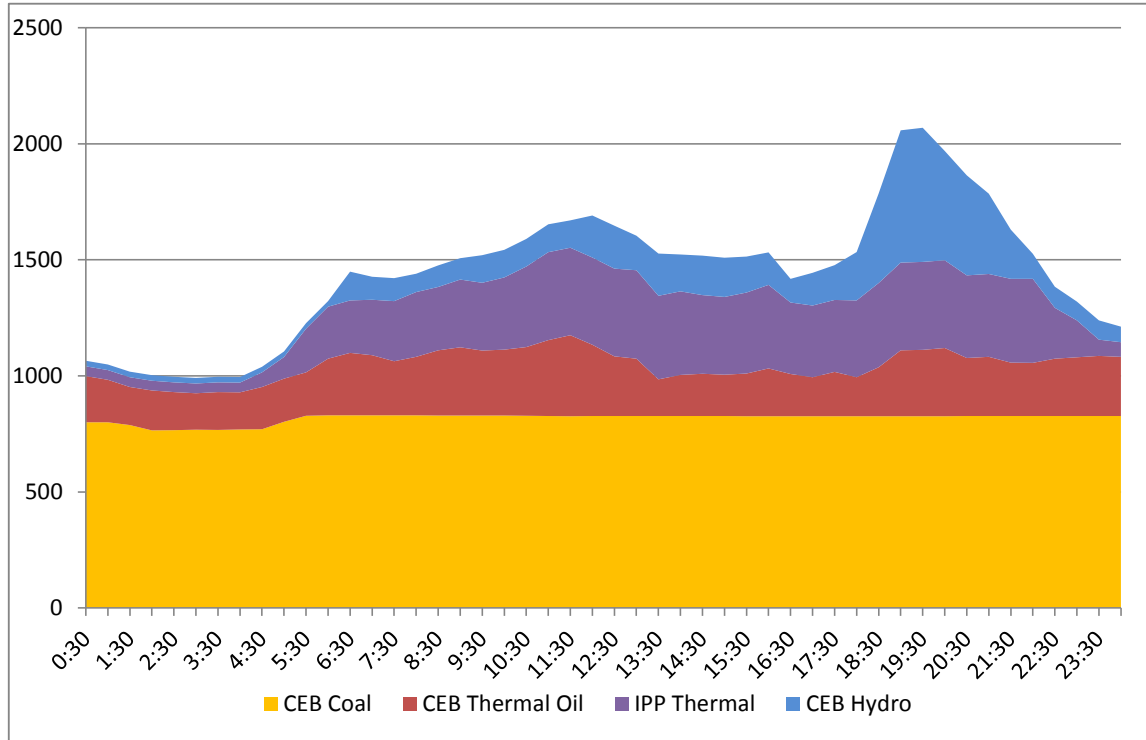
Variation of Demand 2017



Comparison of Cumulative Dispatch from January 1 - February 12, 2017



Daily Load Curve - February 11, 2017



| Power Station | Capacity (MW) | Primary Fuel |
|-------------------------------|----------------------|-------------------------|
| CEB Hydro | | |
| Victoria | 210 | |
| Ukuwela | 40 | |
| Kotmale | 201 | |
| Randenigala | 122 | |
| Rantambe | 49 | |
| Bowatenna | 40 | |
| Nilambe | 3.2 | |
| Upper Kotmale | 150 | |
| Old Laxapana | 50 | |
| New Laxapana | 115 | |
| Polpitiya | 75 | |
| Wimalasurendra | 50 | |
| Canyon | 60 | |
| Samanalawewa | 120 | |
| Kukuleganga | 75 | |
| Inginiyagala | 10 | |
| Udawalawe | 6 | |
| | | |
| CEB Thermal | | |
| Sapugaskanda 1 | 72 | Heavy Fuel |
| Sapugaskanda 2 | 72 | Heavy Fuel |
| Kelanitissa Small Gas Turb | 68 | Auto Diesel |
| GT 7 - Kelanitissa | 115 | Auto Diesel |
| Kelanitissa CCY | 165 | Naptha & Diesel |
| Lakvijaya (Puttalam Coal) | 285 | Coal |
| Lakvijaya (Puttalam Coal) | 285 | Coal |
| Lakvijaya (Puttalam Coal) | 285 | Coal |
| Uthuru Janani | 24 | Heavy Fuel |
| Barge CEB | 60 | Furnace Oil |
| | | |
| Private Thermal (IPPs) | | |
| Asia Power | 51 | Heavy Fuel |
| Sojitz - Kelanitissa | 163 | Auto Diesel |
| West Coast | 270 | Low Sulphur Furnace oil |
| Northern Power | 27 | Auto Diesel |
| ACE Embilipitiya | 100 | Furnace Oil |