

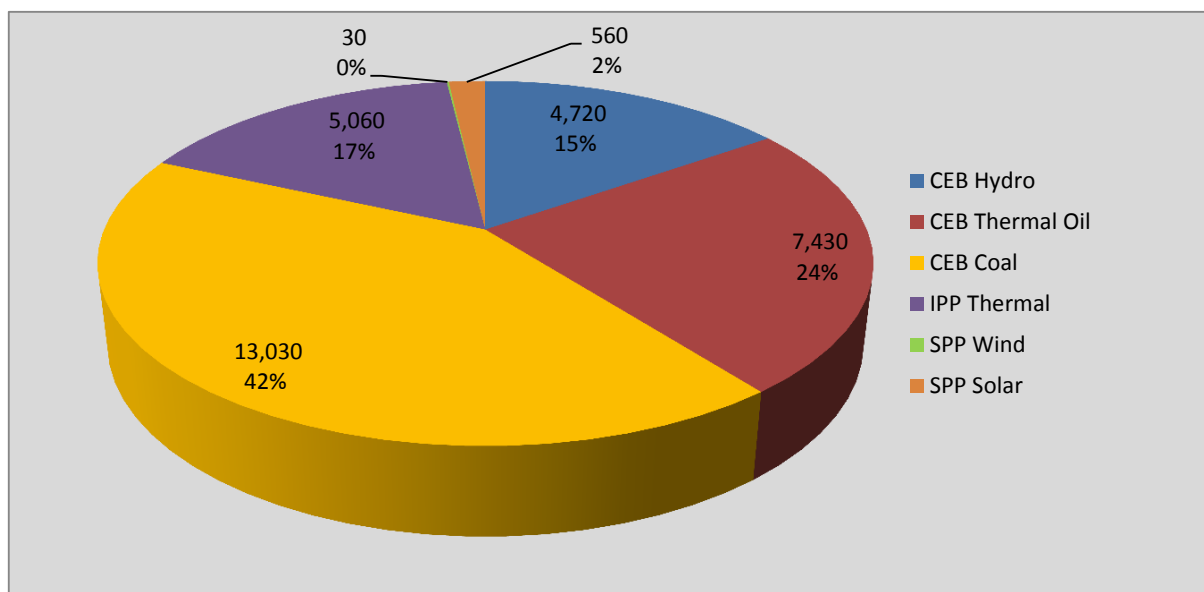
Generation and Reservoirs Statistics

January 1, 2017



PUBLIC UTILITIES COMMISSION OF SRI LANKA

Daily Generation Mix in MWh



Total Generation 30,830 MWh

Note: Generation from other SPPs (Mini Hydro, Solar and Biomass) is not included

Cumulative Dispatch

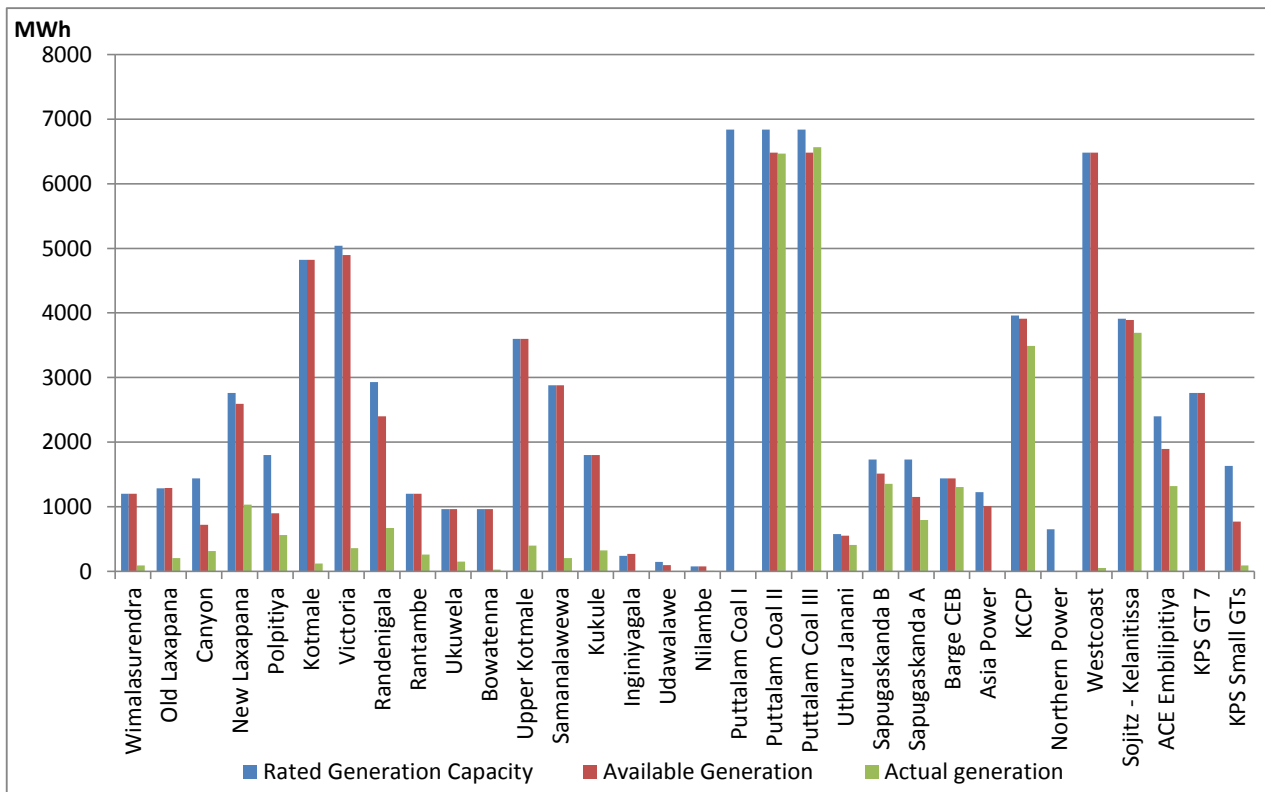
For Current Month

| Category | Dispatch (MWh) | Percentage |
|-----------------|-----------------|------------|
| CEB Hydro | 4,720.0 | 15.31% |
| CEB Thermal Oil | 7,430.0 | 24.10% |
| CEB Coal | 13,030.0 | 42.26% |
| IPP Thermal | 5,060.0 | 16.41% |
| SPP Wind& Solar | 590.0 | 1.91% |
| Total | 30,830.0 | |

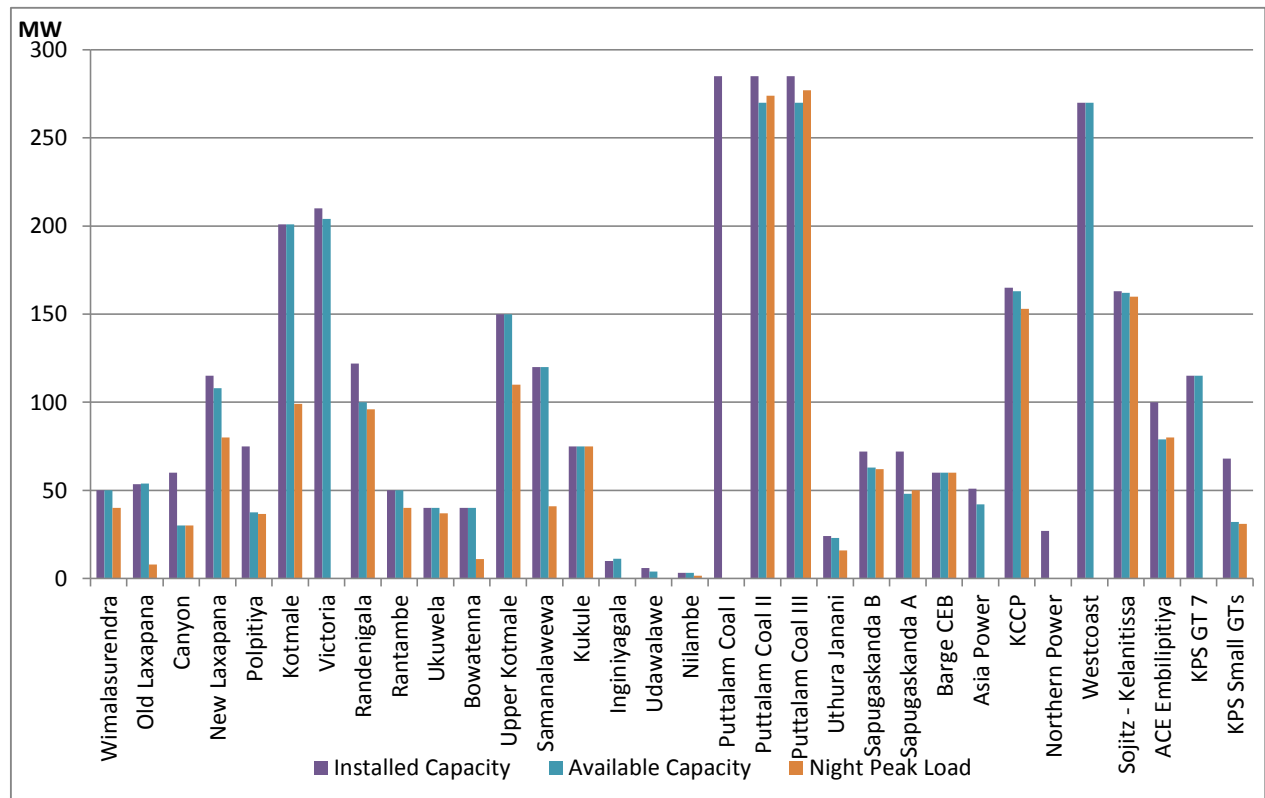
For Current Year

| Category | Dispatch (GWh) | Percentage |
|-----------------|----------------|------------|
| CEB Hydro | 5 | 15.31% |
| CEB Thermal Oil | 7 | 24.10% |
| CEB Coal | 13 | 42.26% |
| IPP Thermal | 5 | 16.41% |
| Renewable | 1 | 1.91% |
| Total | 31 | |

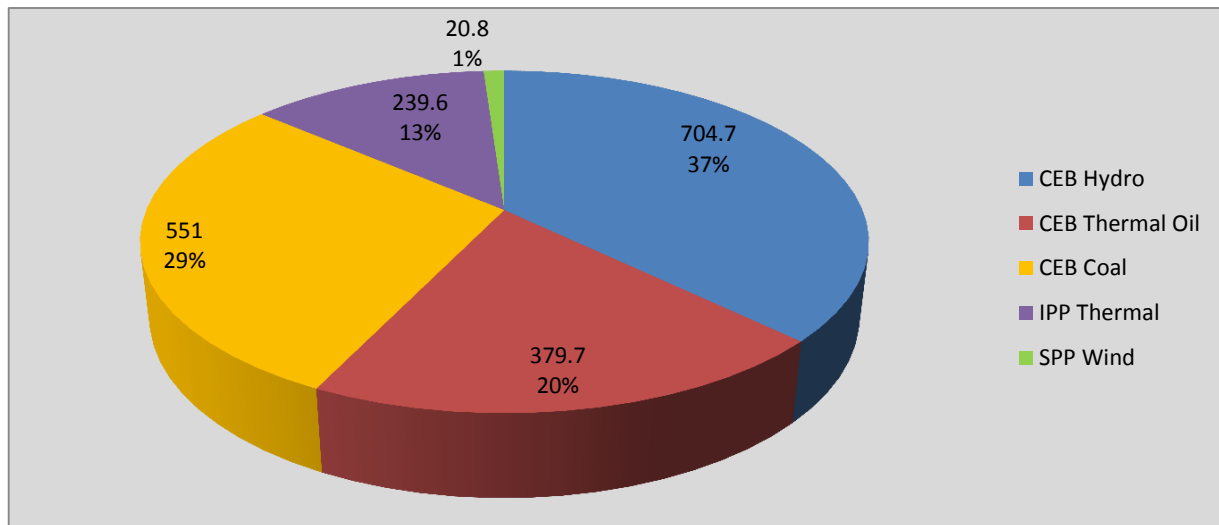
Plant Dispatch on January 1, 2017



Plant Loading at Night Peak on January 1, 2017



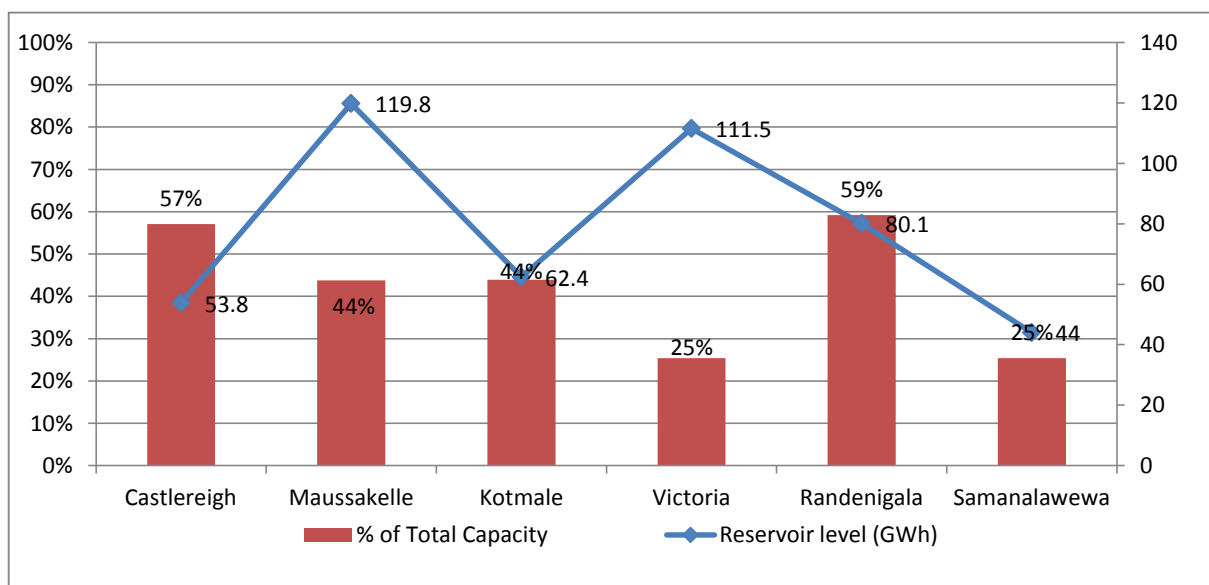
Contribution to the Night Peak in MW



Night Peak 1,895.9 MW
 Day Peak 1,398.3 MW
 Minimum Demand 997.6 MW

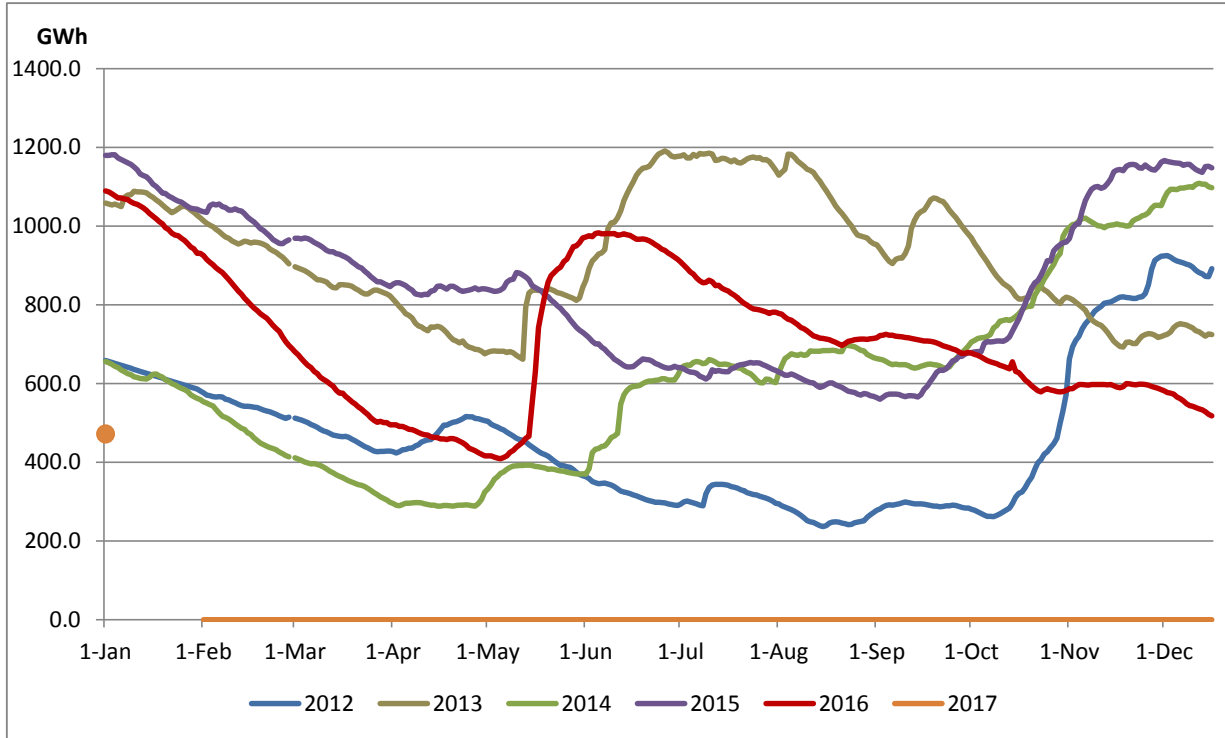
Note: Contribution from other SPPs (Mini Hydro, Solar and Biomass) is not included

Reservoir Levels - as at 06.00 Hr on January 2, 2017



Total Reservoir Level(GWh) 471.6
 % of Total capacity 37.48

Comparison of Total Reservoir Storage Levels with Past Years



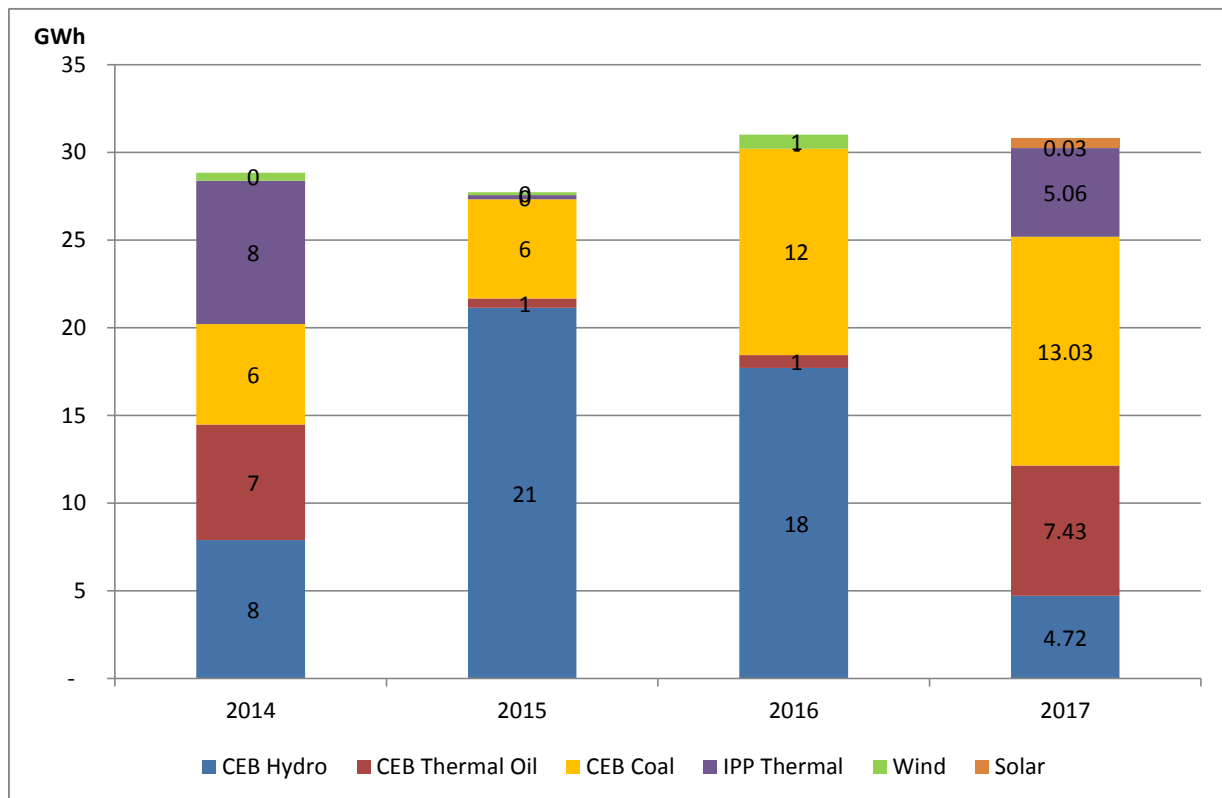
Variation of Major Hydro Reservoir Levels in GWh- 2017

will be published from 2nd January

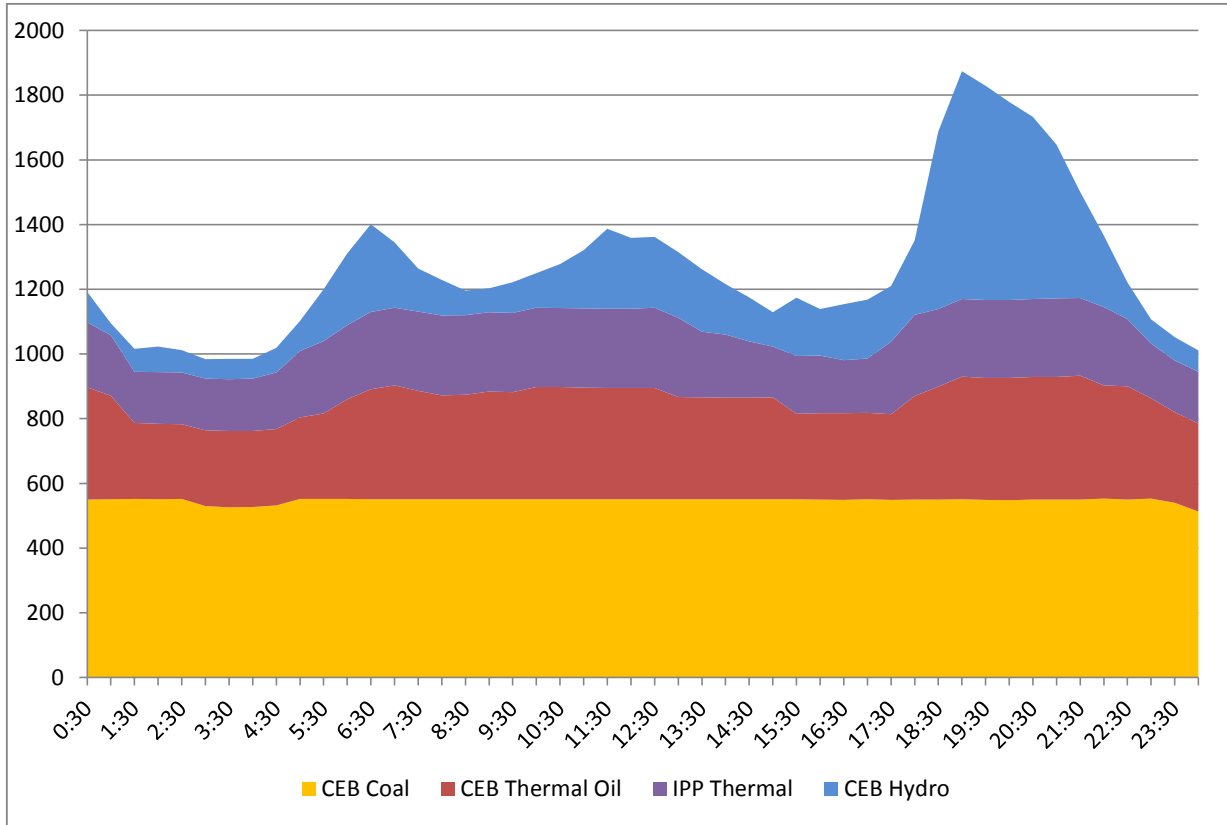
Variation of Demand 2017

will be published from 2nd January

Comparison of Cumulative Dispatch from January 1 - January 1, 2017



Daily Load Curve - December 31, 2016



| Power Station | Capacity (MW) | Primary Fuel |
|-------------------------------|---------------|-------------------------|
| CEB Hydro | | |
| Victoria | 210 | |
| Ukuwela | 40 | |
| Kotmale | 201 | |
| Randenigala | 122 | |
| Rantambe | 49 | |
| Bowatenna | 40 | |
| Nilambe | 3.2 | |
| Upper Kotmale | 150 | |
| Old Laxapana | 50 | |
| New Laxapana | 115 | |
| Polpitiya | 75 | |
| Wimalasurendra | 50 | |
| Canyon | 60 | |
| Samanalawewa | 120 | |
| Kukuleganga | 75 | |
| Inginiyagala | 10 | |
| Udawalawe | 6 | |
| CEB Thermal | | |
| Sapugaskanda 1 | 72 | Heavy Fuel |
| Sapugaskanda 2 | 72 | Heavy Fuel |
| Kelanitissa Small Gas Turb | 68 | Auto Diesel |
| GT 7 - Kelanitissa | 115 | Auto Diesel |
| Kelanitissa CCY | 165 | Naptha & Diesel |
| Lakvijaya (Puttalam Coal) | 285 | Coal |
| Lakvijaya (Puttalam Coal) | 285 | Coal |
| Lakvijaya (Puttalam Coal) | 285 | Coal |
| Uthuru Janani | 24 | Heavy Fuel |
| Barge CEB | 60 | Furnace Oil |
| Private Thermal (IPPs) | | |
| Asia Power | 51 | Heavy Fuel |
| Sojitz - Kelanitissa | 163 | Auto Diesel |
| West Coast | 270 | Low Sulphur Furnace oil |
| Northern Power | 27 | Auto Diesel |
| ACE Embilipitiya | 100 | Furnace Oil |