

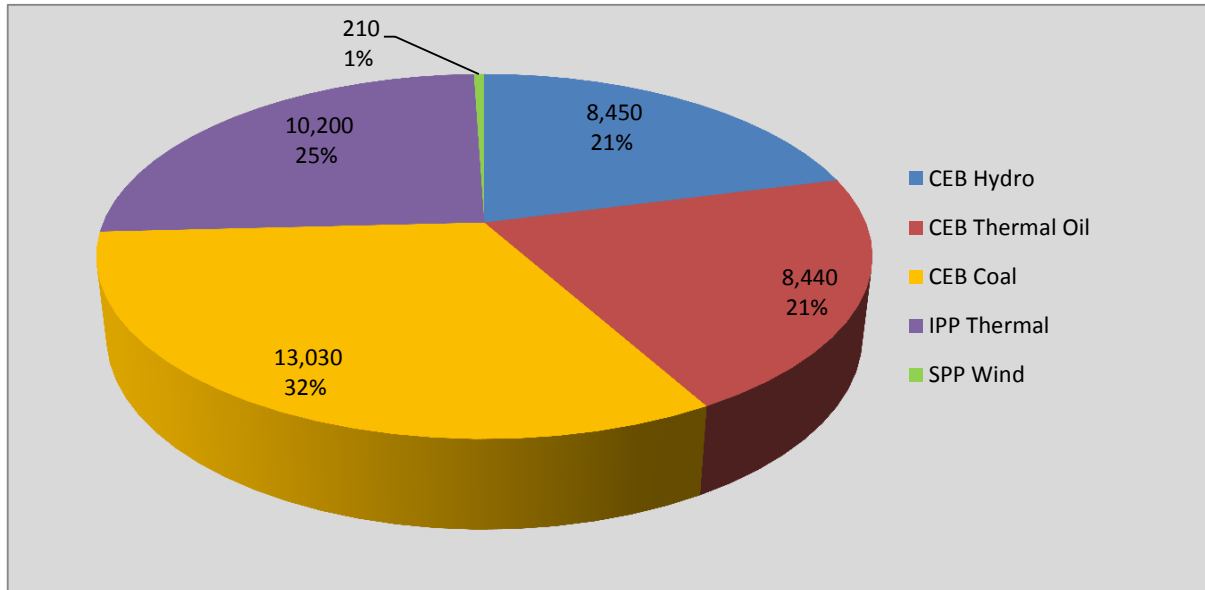
Generation and Reservoirs Statistics

December 15, 2016



PUBLIC UTILITIES COMMISSION OF SRI LANKA

Daily Generation Mix in MWh



Total Generation 40,390 MWh

Note: Generation from other SPPs (Mini Hydro, Solar and Biomass) is not included

Cumulative Dispatch -January 1 to December 15, 2016

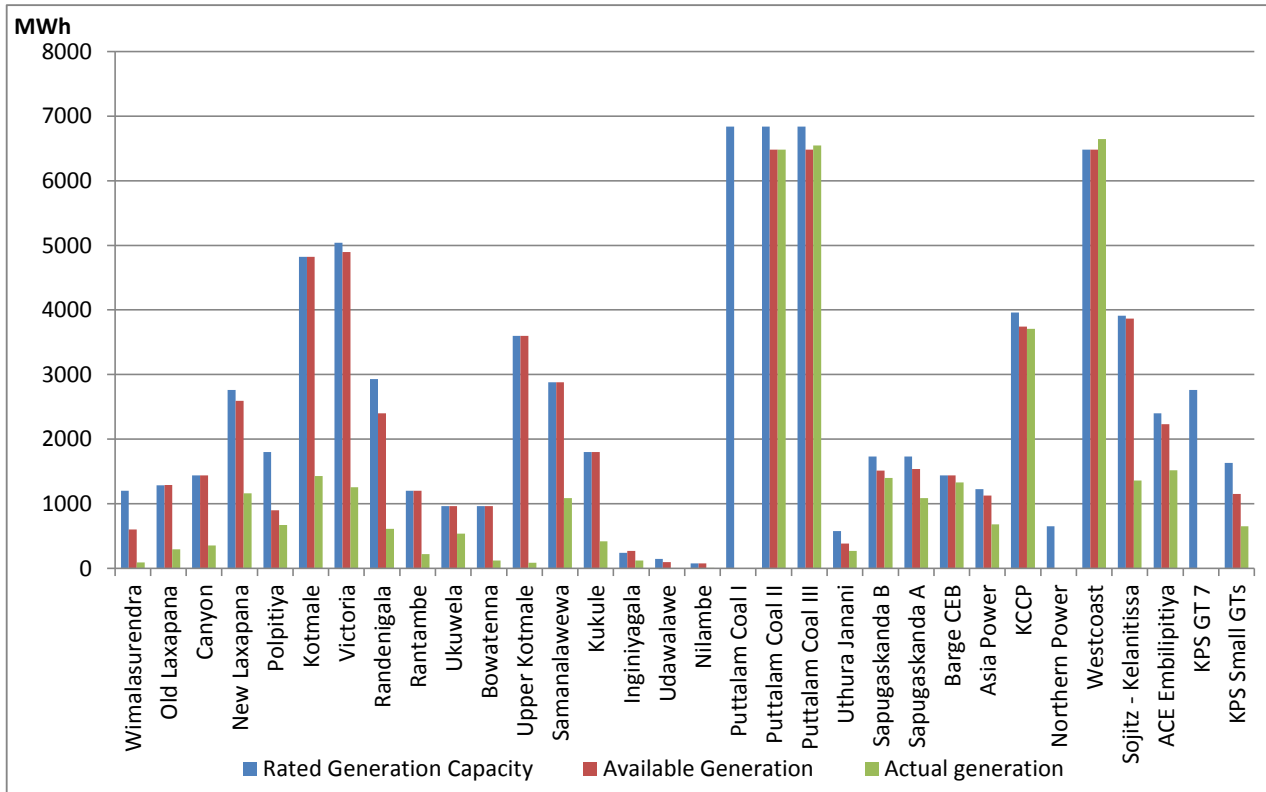
For Current Month

| Category | Dispatch (MWh) | Percentage |
|-----------------|------------------|------------|
| CEB Hydro | 109,020.0 | 19.61% |
| CEB Thermal Oil | 129,030.0 | 23.21% |
| CEB Coal | 192,100.0 | 34.55% |
| IPP Thermal | 119,730.0 | 21.54% |
| SPP Wind | 6,089.1 | 1.10% |
| Total | 555,969.1 | |

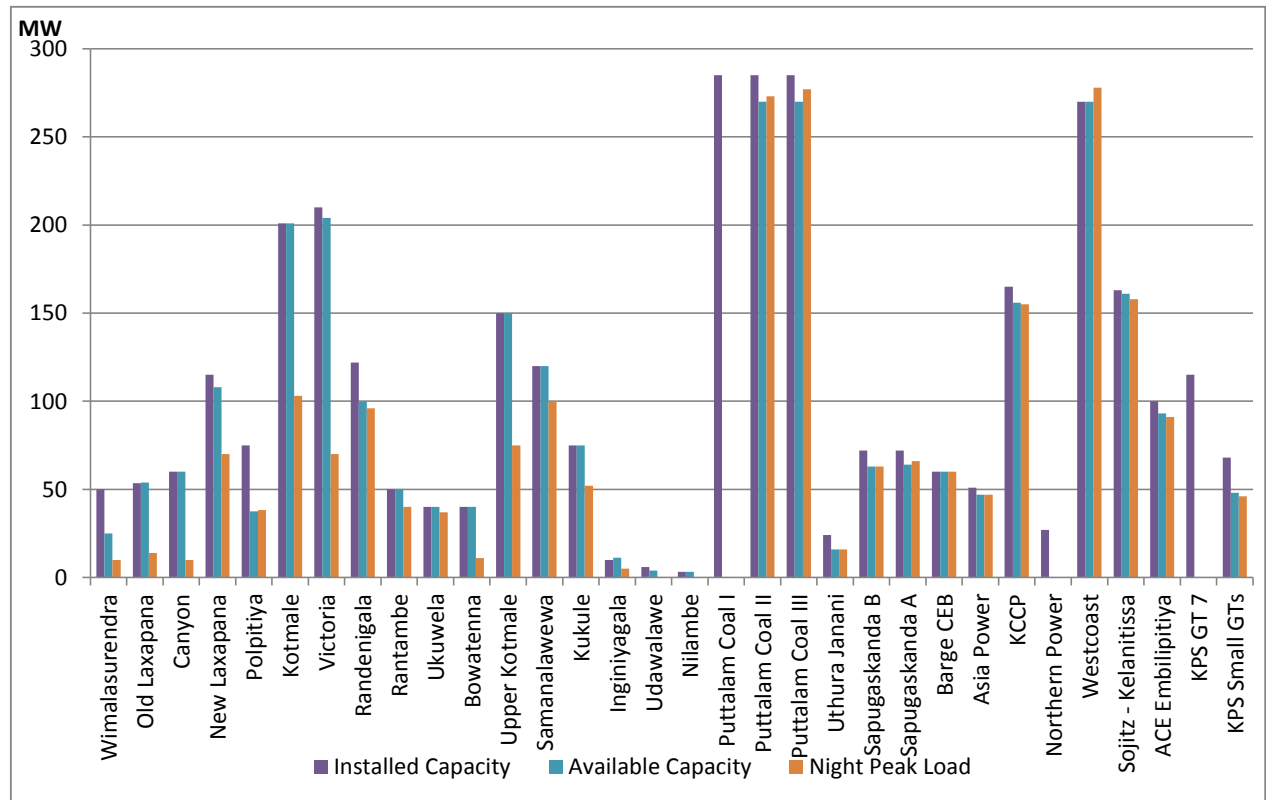
For Current Year

| Category | Dispatch (GWh) | Percentage |
|-----------------|----------------|------------|
| CEB Hydro | 3,399 | 25.22% |
| CEB Thermal Oil | 2,199 | 16.32% |
| CEB Coal | 4,860 | 36.07% |
| IPP Thermal | 2,017 | 14.97% |
| Renewable | 999 | 7.41% |
| Total | 13,474 | |

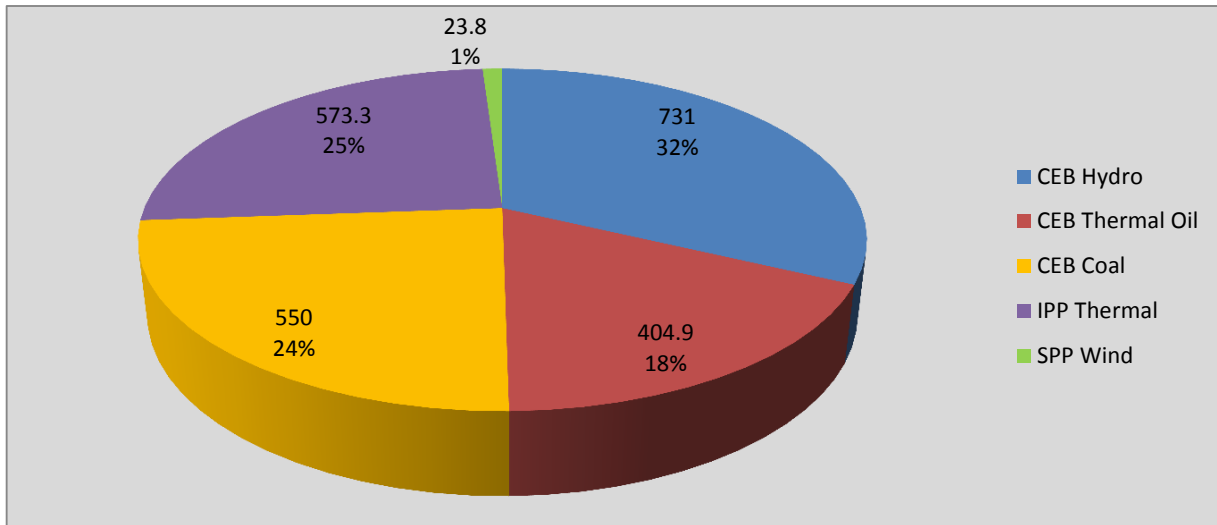
Plant Dispatch on December 15, 2016



Plant Loading at Night Peak on December 15, 2016



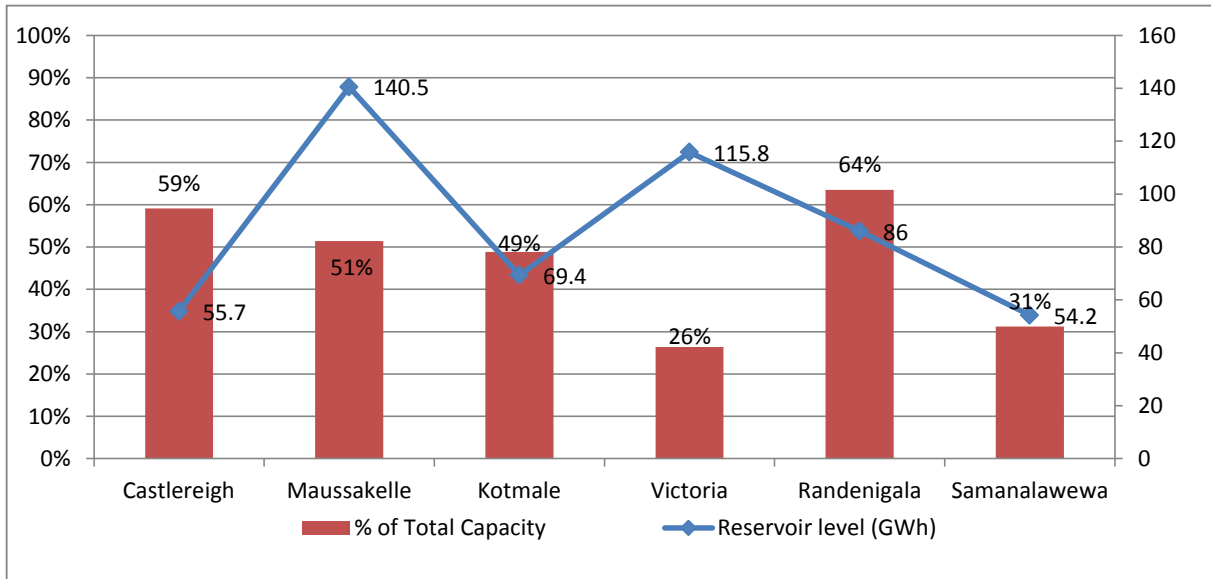
Contribution to the Night Peak in MW



Night Peak 2,283.0 MW
 Day Peak 2,037.1 MW
 Minimum Demand 1,095.8 MW

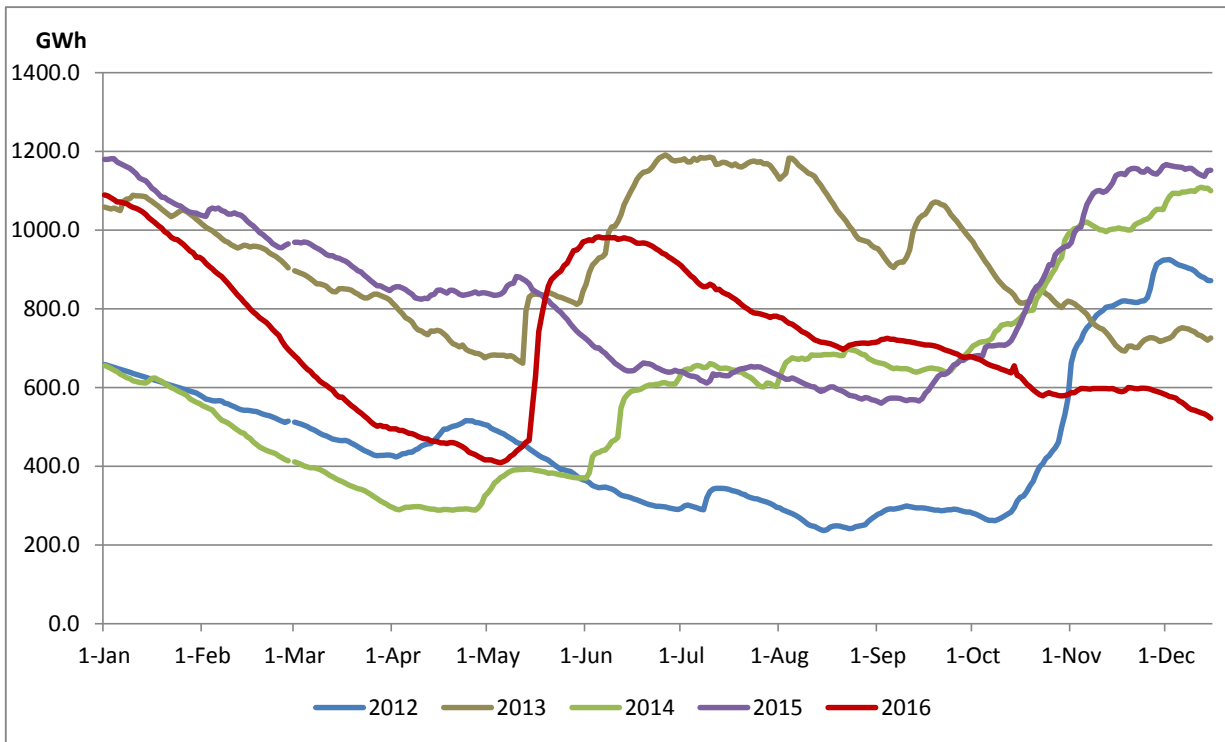
Note: Contribution from other SPPs (Mini Hydro, Solar and Biomass) is not included

Reservoir Levels - as at 06.00 Hr on December 16, 2016

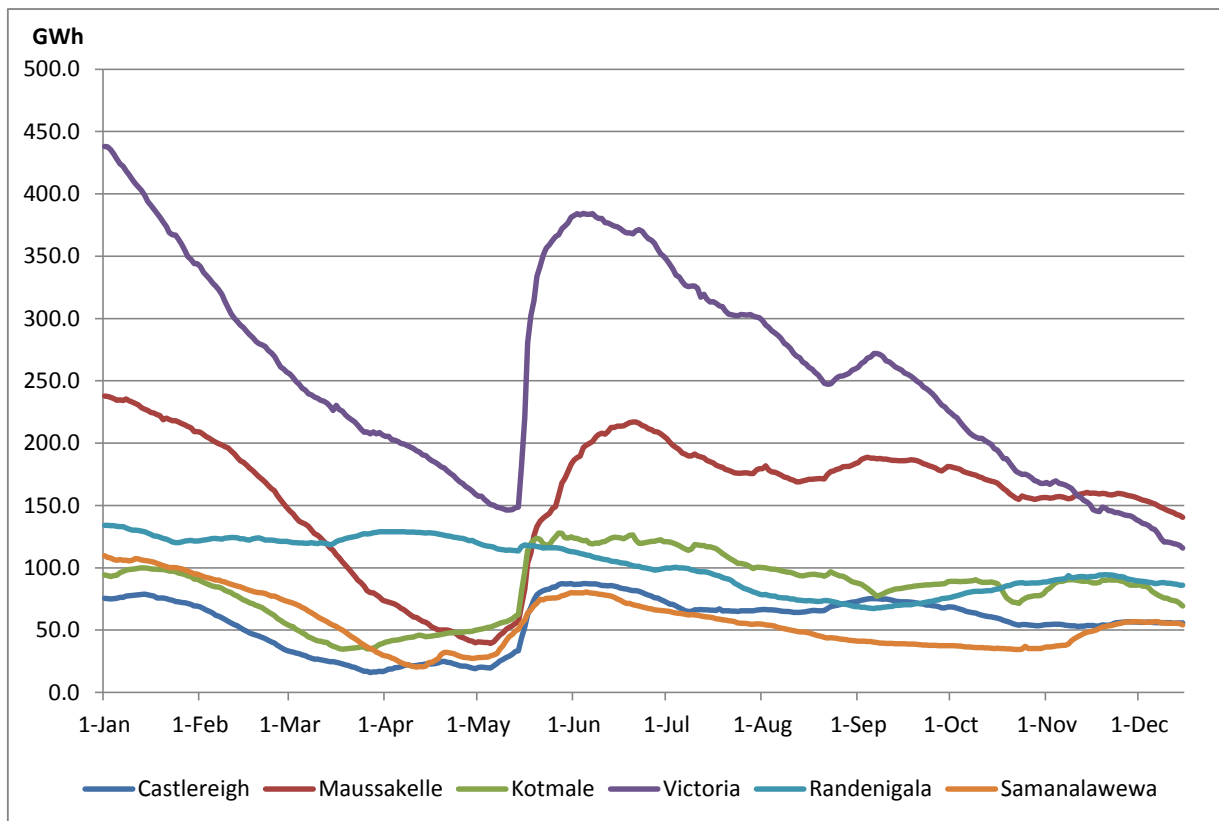


Total Reservoir Level(GWh) 521.6
 % of Total capacity 41.44

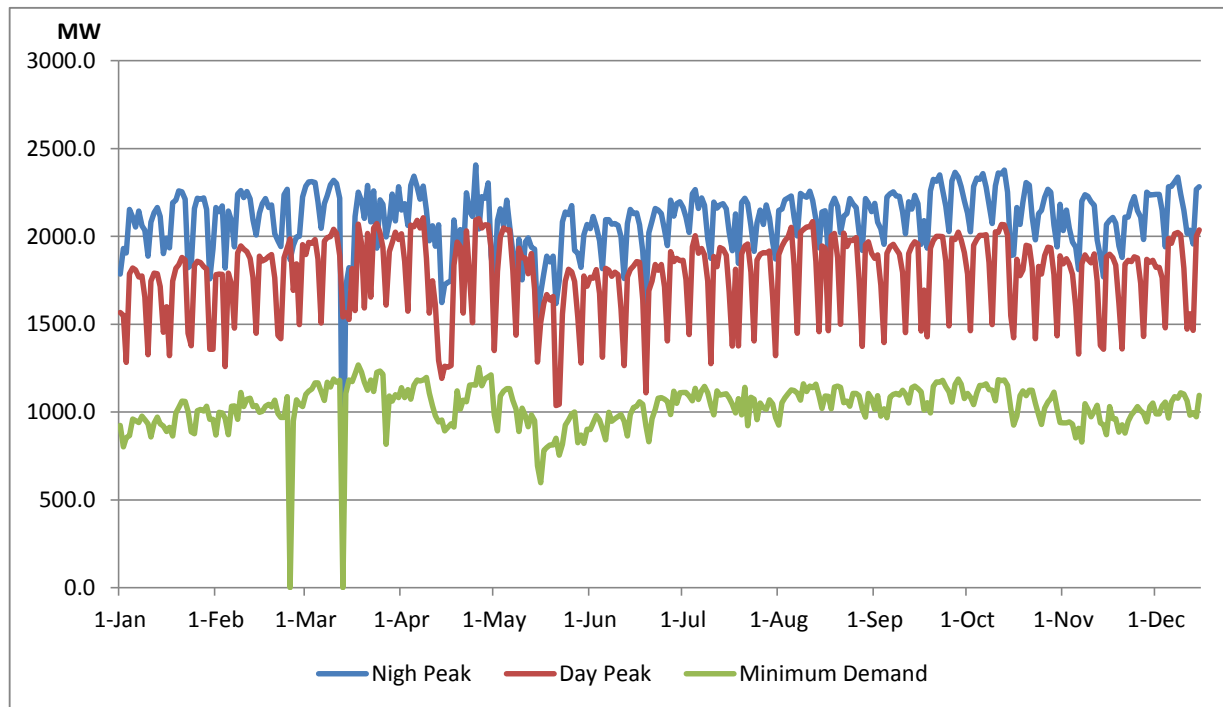
Comparison of Total Reservoir Storage Levels with Past Years



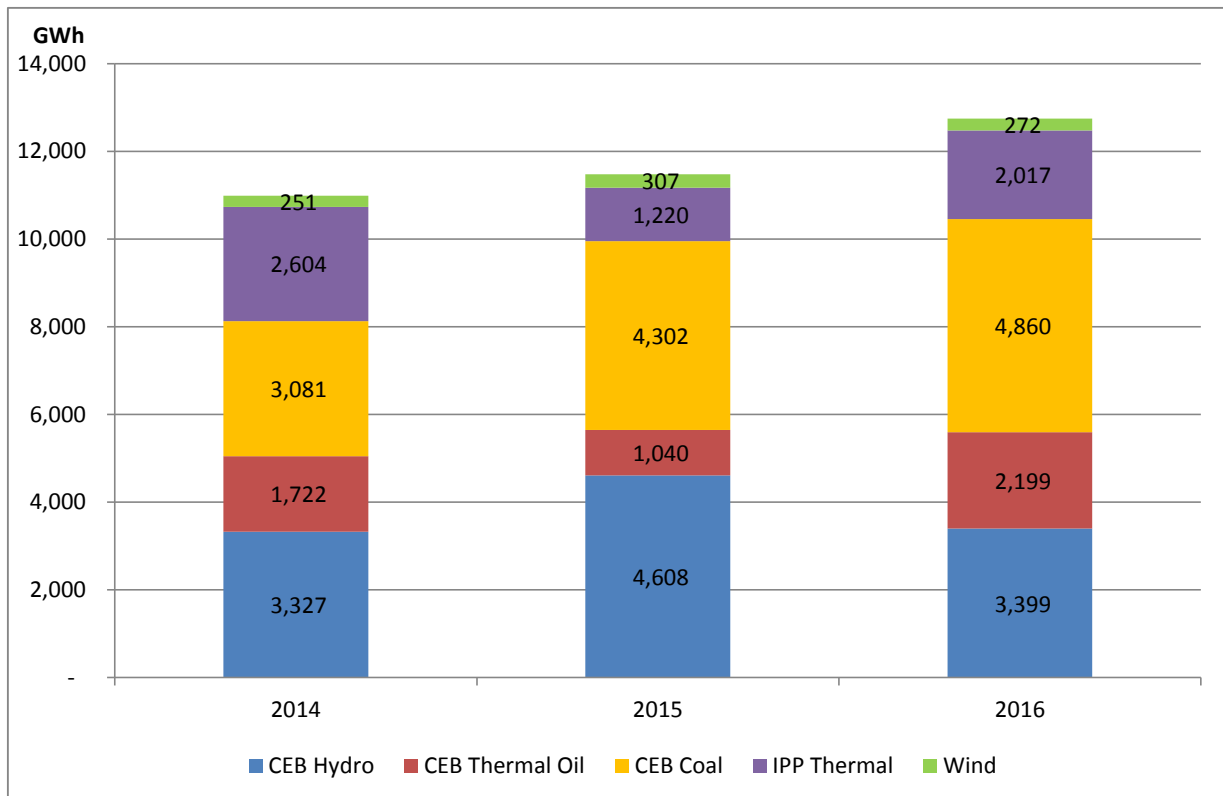
Variation of Major Hydro Reservoir Levels in GWh- 2016



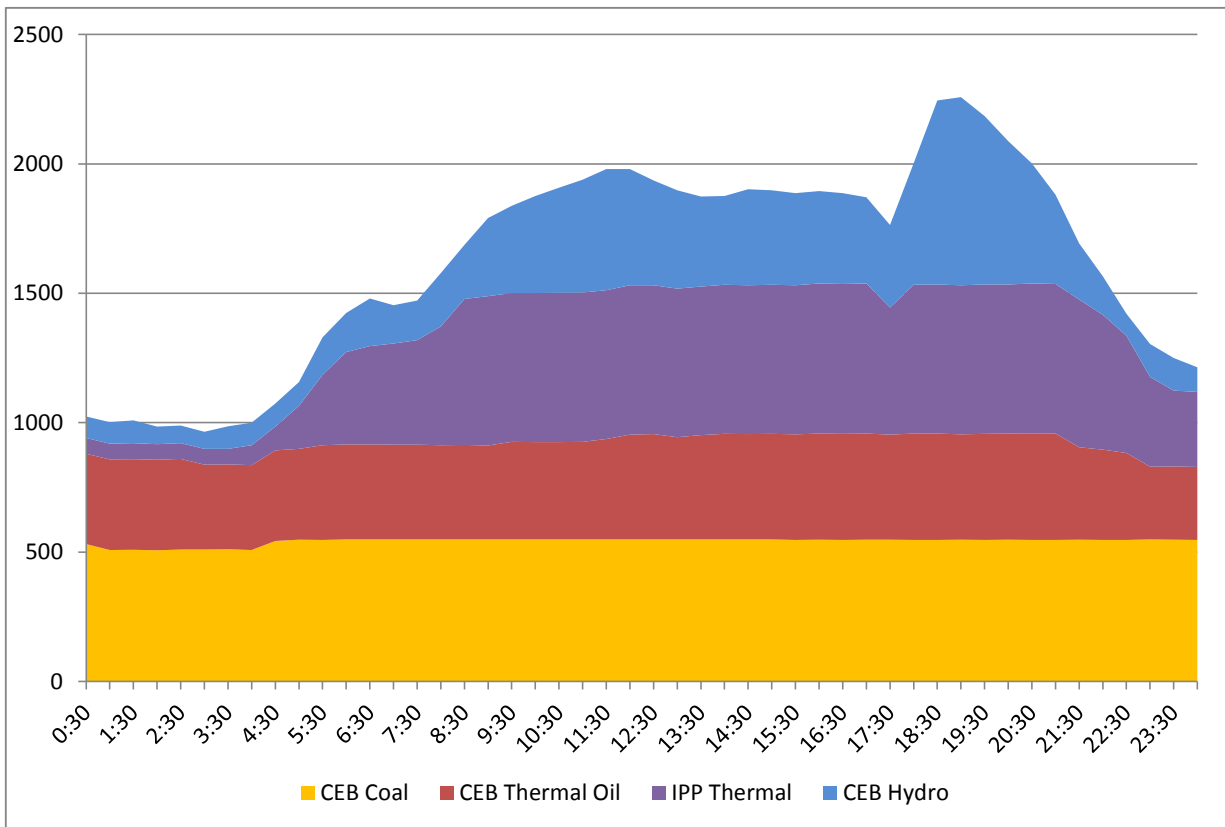
Variation of Demand 2016



Comparison of Cumulative Dispatch from January 1 - December 15, 2016



Daily Load Curve - December 14, 2016



| Power Station | Capacity (MW) | Primary Fuel |
|-------------------------------|----------------------|-------------------------|
| CEB Hydro | | |
| Victoria | 210 | |
| Ukuwela | 40 | |
| Kotmale | 201 | |
| Randenigala | 122 | |
| Rantambe | 49 | |
| Bowatenna | 40 | |
| Nilambe | 3.2 | |
| Upper Kotmale | 150 | |
| Old Laxapana | 50 | |
| New Laxapana | 115 | |
| Polpitiya | 75 | |
| Wimalasurendra | 50 | |
| Canyon | 60 | |
| Samanalawewa | 120 | |
| Kukuleganga | 75 | |
| Inginiyagala | 10 | |
| Udawalawe | 6 | |
| | | |
| CEB Thermal | | |
| Sapugaskanda 1 | 72 | Heavy Fuel |
| Sapugaskanda 2 | 72 | Heavy Fuel |
| Kelanitissa Small Gas Turb | 68 | Auto Diesel |
| GT 7 - Kelanitissa | 115 | Auto Diesel |
| Kelanitissa CCY | 165 | Naptha & Diesel |
| Lakvijaya (Puttalam Coal) | 285 | Coal |
| Lakvijaya (Puttalam Coal) | 285 | Coal |
| Lakvijaya (Puttalam Coal) | 285 | Coal |
| Uthuru Janani | 24 | Heavy Fuel |
| Barge CEB | 60 | Furnace Oil |
| | | |
| Private Thermal (IPPs) | | |
| Asia Power | 51 | Heavy Fuel |
| Sojitz - Kelanitissa | 163 | Auto Diesel |
| West Coast | 270 | Low Sulphur Furnace oil |
| Northern Power | 27 | Auto Diesel |
| ACE Embilipitiya | 100 | Furnace Oil |