

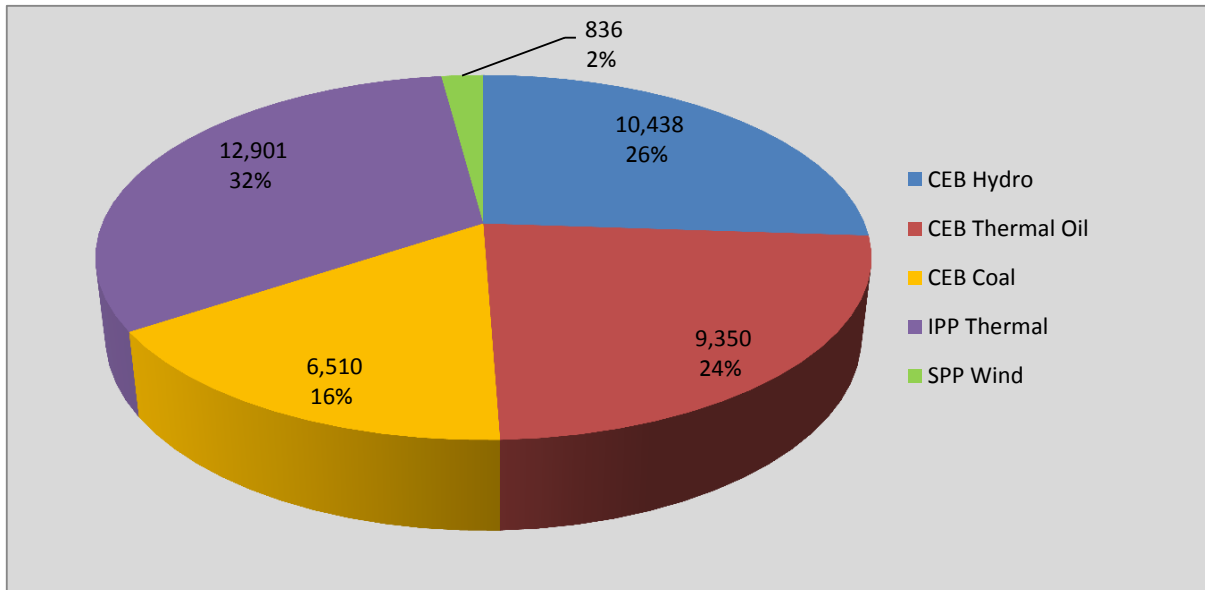
# **Generation and Reservoirs Statistics**

**October 20, 2016**



PUBLIC UTILITIES COMMISSION OF SRI LANKA

## Daily Generation Mix in MWh



**Total Generation 40,029 MWh**

Note: Generation from other SPPs (Mini Hydro, Solar and Biomass) is not included

## Cumulative Dispatch -January 1 to October 20, 2016

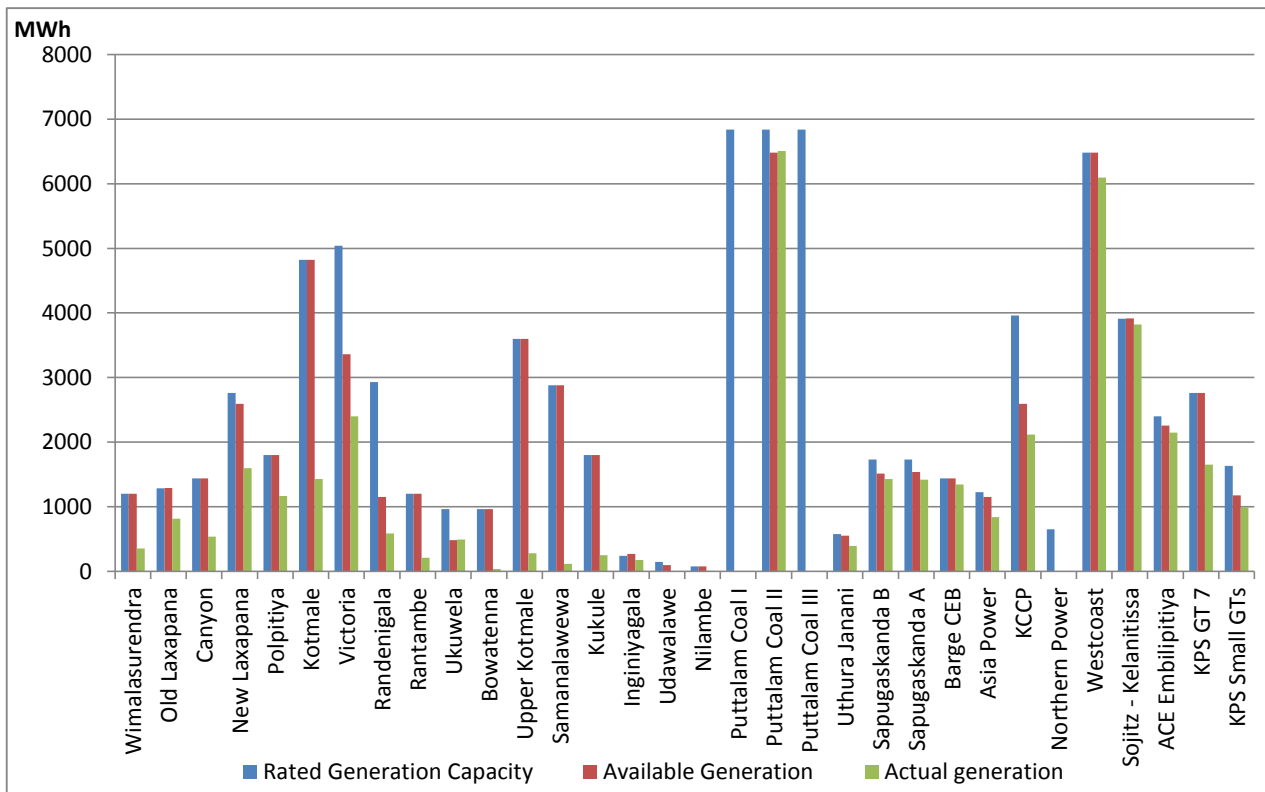
### For Current Month

Category	Dispatch (MWh)	Percentage
CEB Hydro	141,381.0	18.46%
CEB Thermal Oil	162,410.0	21.21%
CEB Coal	254,130.0	33.19%
IPP Thermal	188,218.0	24.58%
SPP Wind	19,634.9	2.56%
<b>Total</b>	<b>765,773.9</b>	

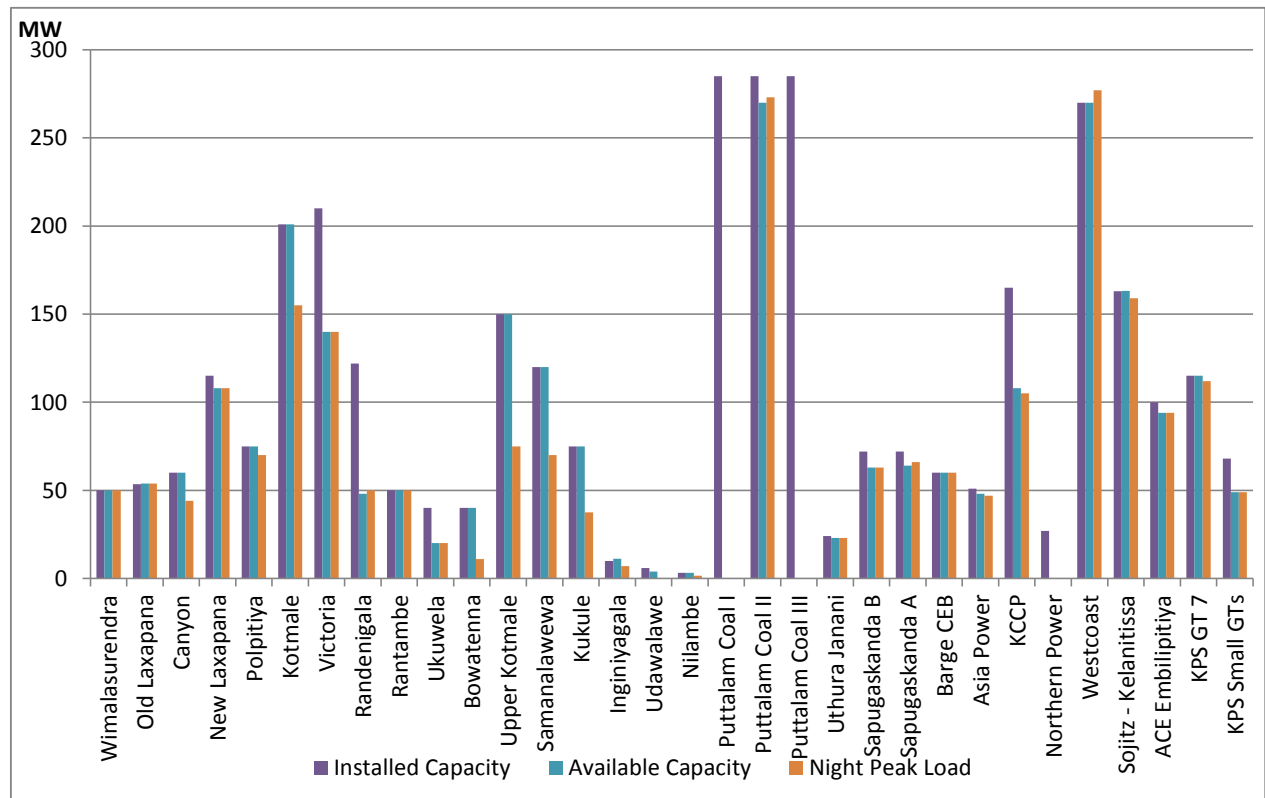
### For Current Year

Category	Dispatch (GWh)	Percentage
CEB Hydro	2,978	26.33%
CEB Thermal Oil	1,717	15.18%
CEB Coal	4,181	36.97%
IPP Thermal	1,596	14.11%
Renewable	839	7.41%
<b>Total</b>	<b>11,311</b>	

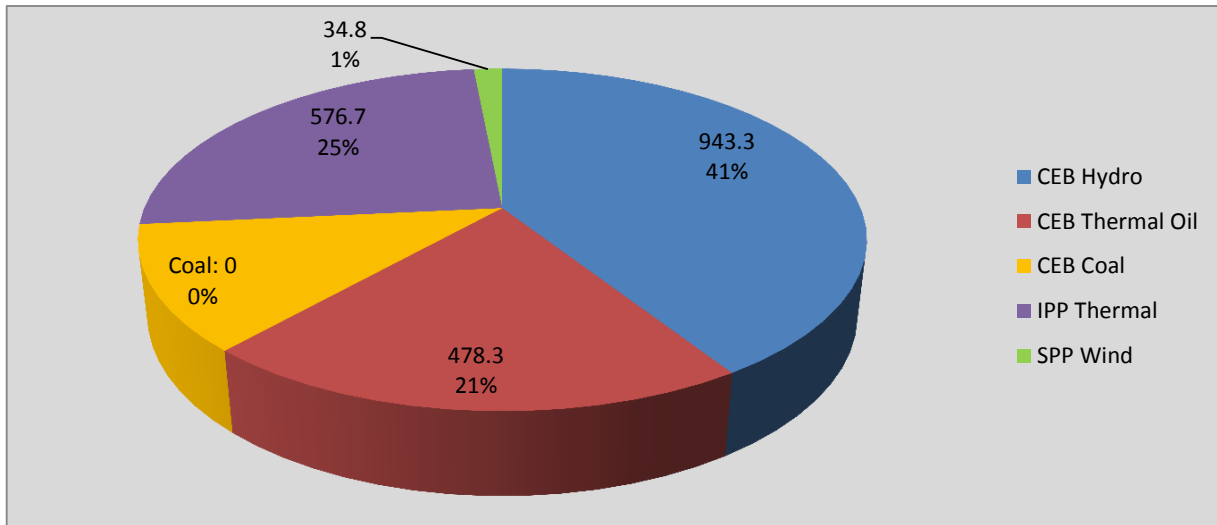
## Plant Dispatch on October 20, 2016



## Plant Loading at Night Peak on October 20, 2016



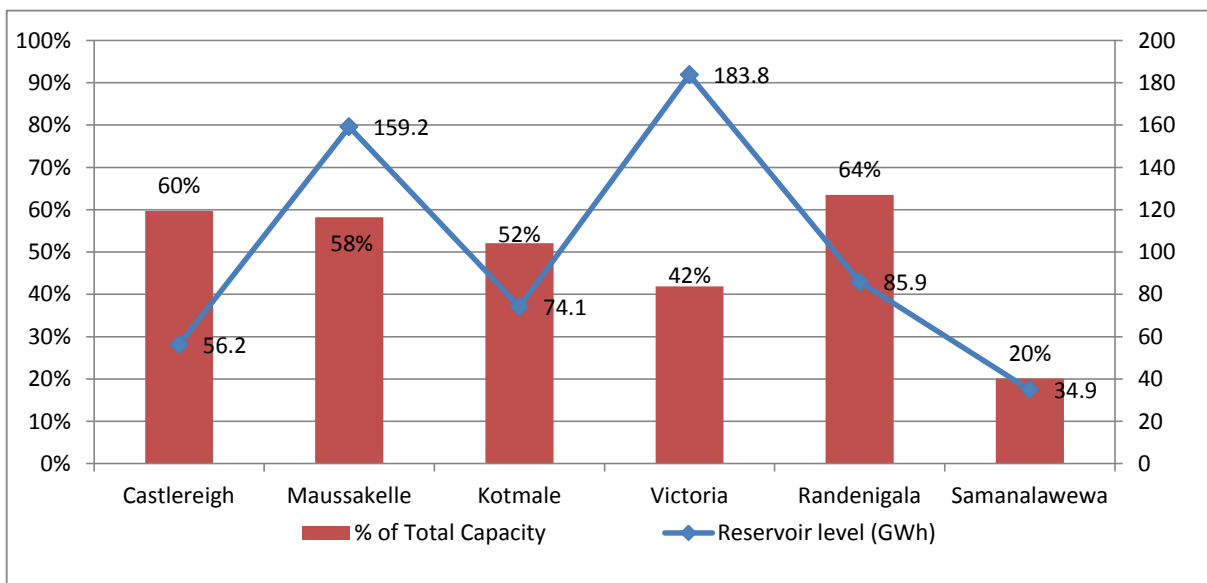
## Contribution to the Night Peak in MW



Night Peak 2,306.1 MW  
 Day Peak 1,949.6 MW  
 Minimum Demand 1,094.3 MW

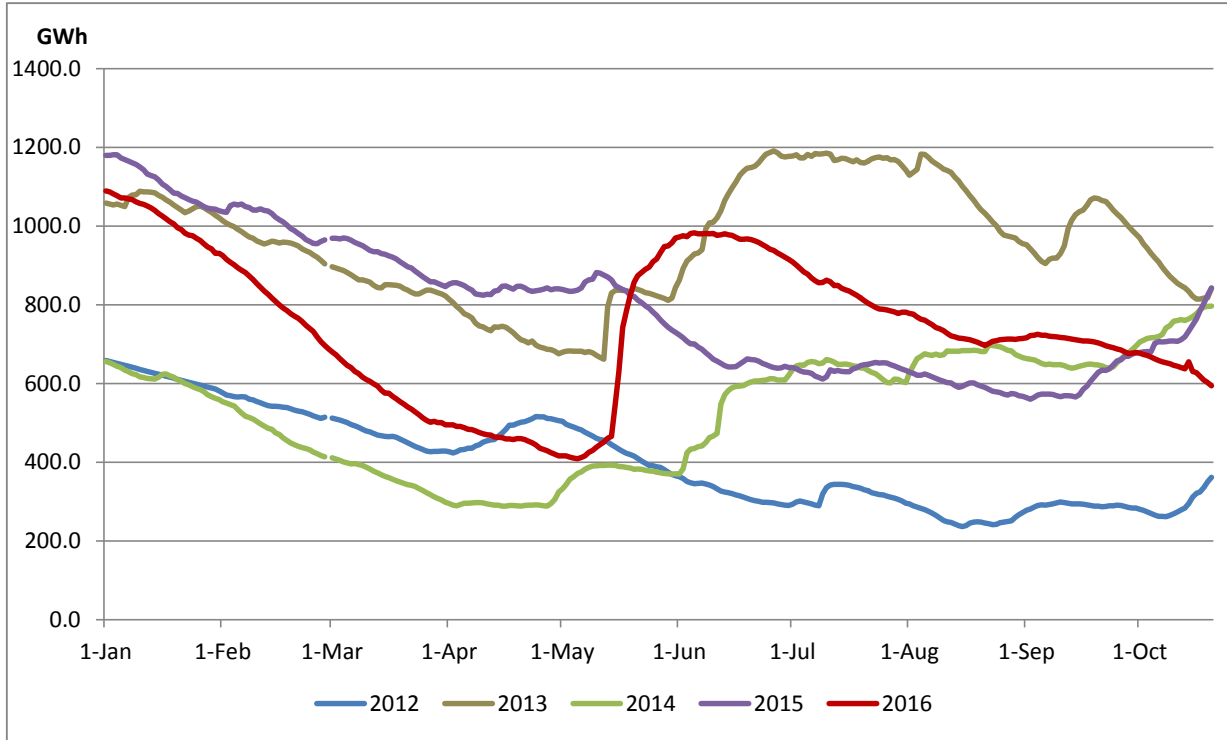
**Note:** Contribution from other SPPs (Mini Hydro, Solar and Biomass) is not included

## Reservoir Levels - as at 06.00 Hr on October 21, 2016

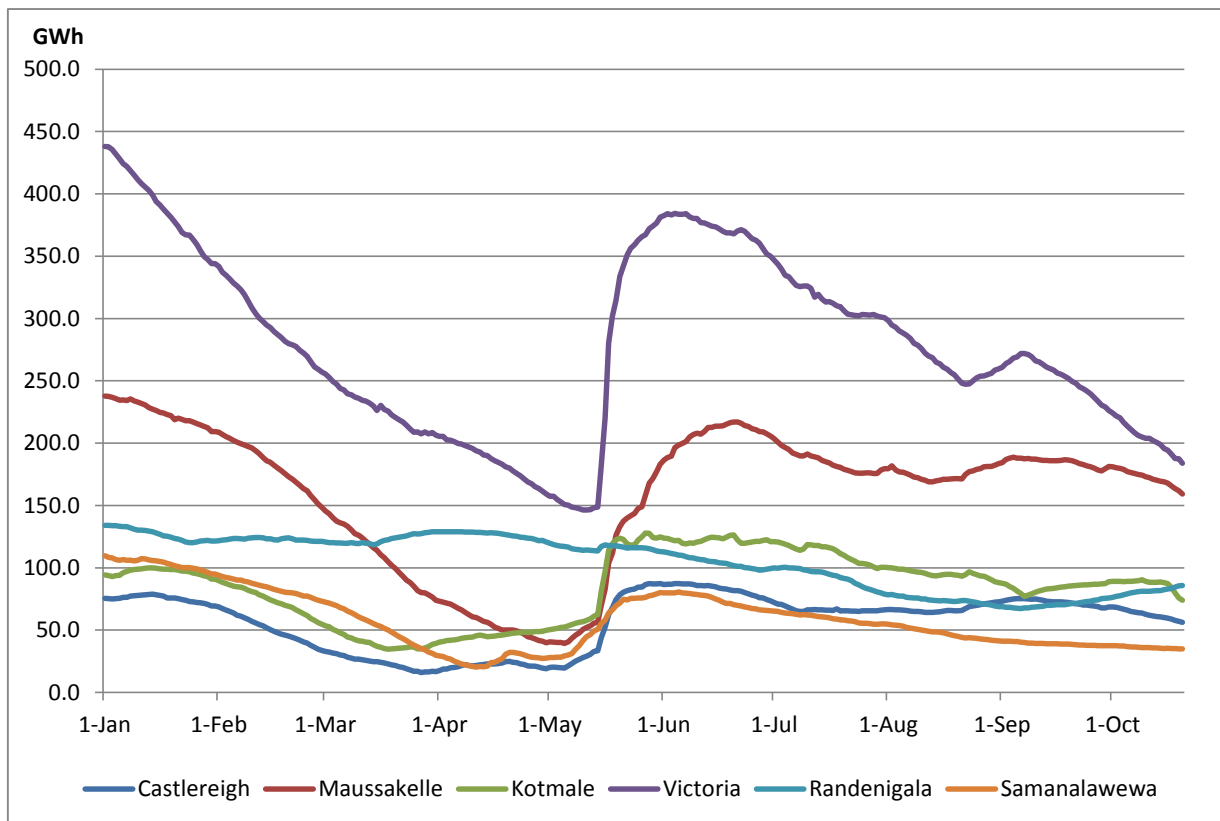


Total Reservoir Level(GWh) 594.1  
 % of Total capacity 47.20%

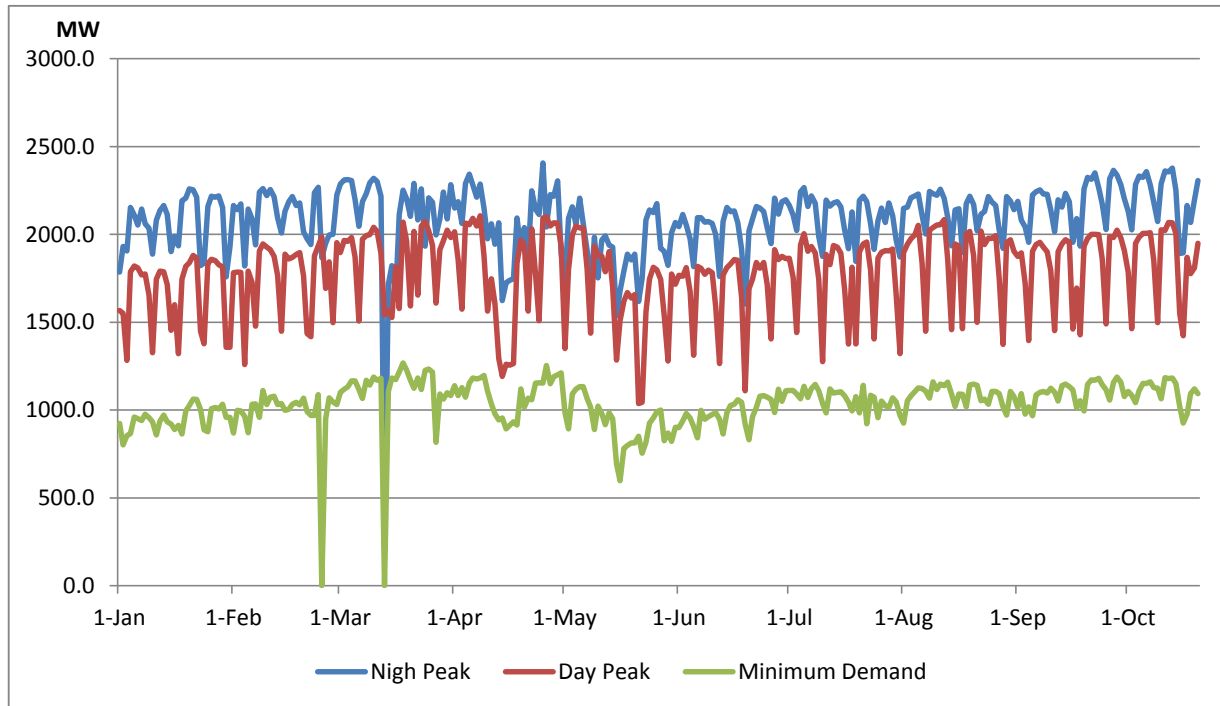
## Comparison of Total Reservoir Storage Levels with Past Years



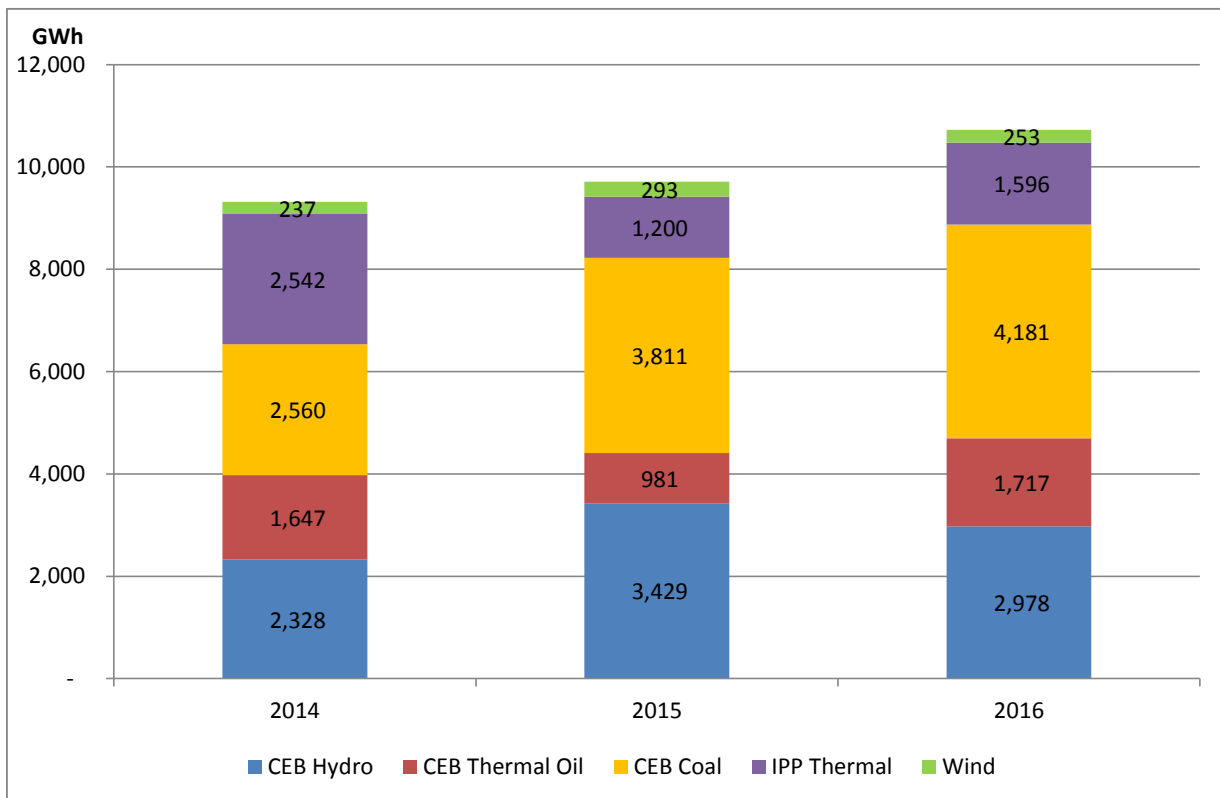
## Variation of Major Hydro Reservoir Levels in GWh- 2016



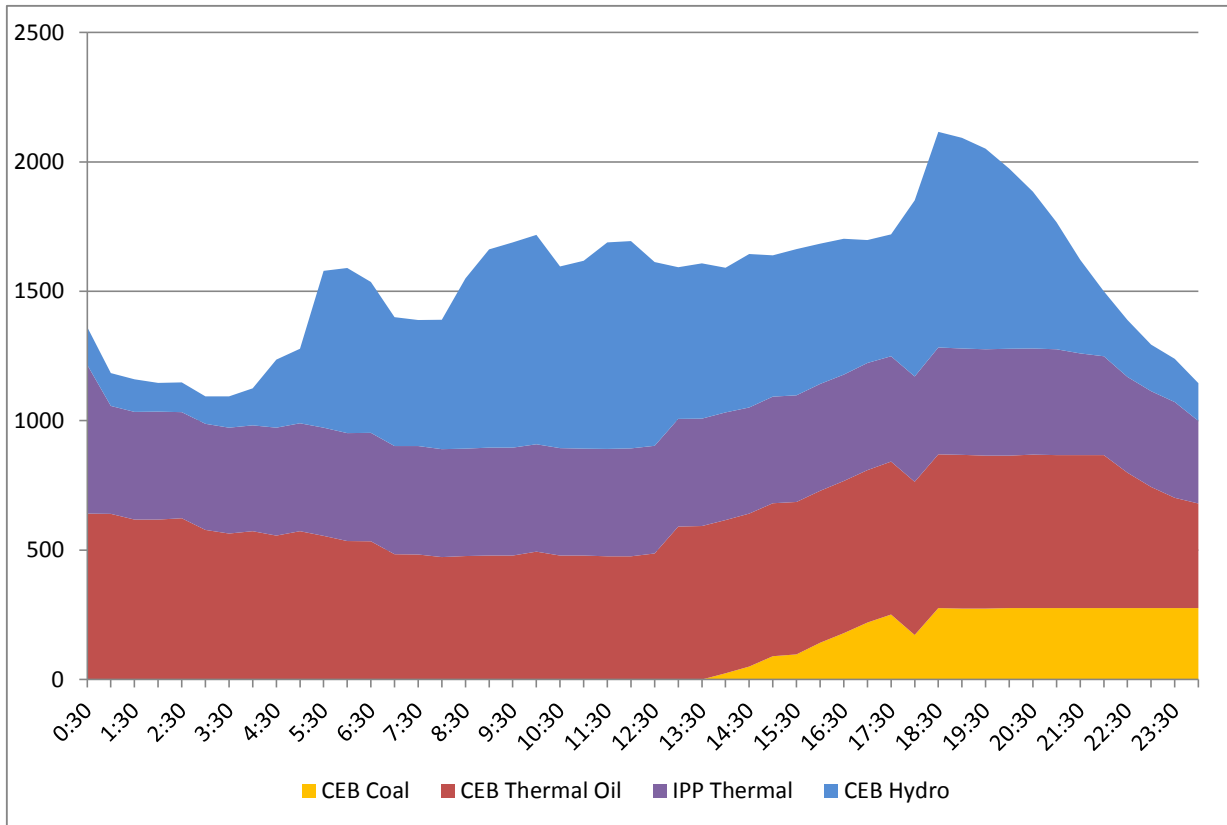
## Variation of Demand 2016



## Comparison of Cumulative Dispatch from January 1 - October 20, 2016



## Daily Load Curve - October 19, 2016



<b>Power Station</b>	<b>Capacity (MW)</b>	<b>Primary Fuel</b>
<b>CEB Hydro</b>		
Victoria	210	
Ukuwela	40	
Kotmale	201	
Randenigala	122	
Rantambe	49	
Bowatenna	40	
Nilambe	3.2	
Upper Kotmale	150	
Old Laxapana	50	
New Laxapana	115	
Polpitiya	75	
Wimalasurendra	50	
Canyon	60	
Samanalawewa	120	
Kukuleganga	75	
Inginiyagala	10	
Udawalawe	6	
<b>CEB Thermal</b>		
Sapugaskanda 1	72	Heavy Fuel
Sapugaskanda 2	72	Heavy Fuel
Kelanitissa Small Gas Turb	68	Auto Diesel
GT 7 - Kelanitissa	115	Auto Diesel
Kelanitissa CCY	165	Naptha & Diesel
Lakvijaya (Puttalam Coal)	285	Coal
Lakvijaya (Puttalam Coal)	285	Coal
Lakvijaya (Puttalam Coal)	285	Coal
Uthuru Janani	24	Heavy Fuel
Barge CEB	60	Furnace Oil
<b>Private Thermal (IPPs)</b>		
Asia Power	51	Heavy Fuel
Sojitz - Kelanitissa	163	Auto Diesel
West Coast	270	Low Sulphur Furnace oil
Northern Power	27	Auto Diesel
ACE Embilipitiya	100	Furnace Oil