

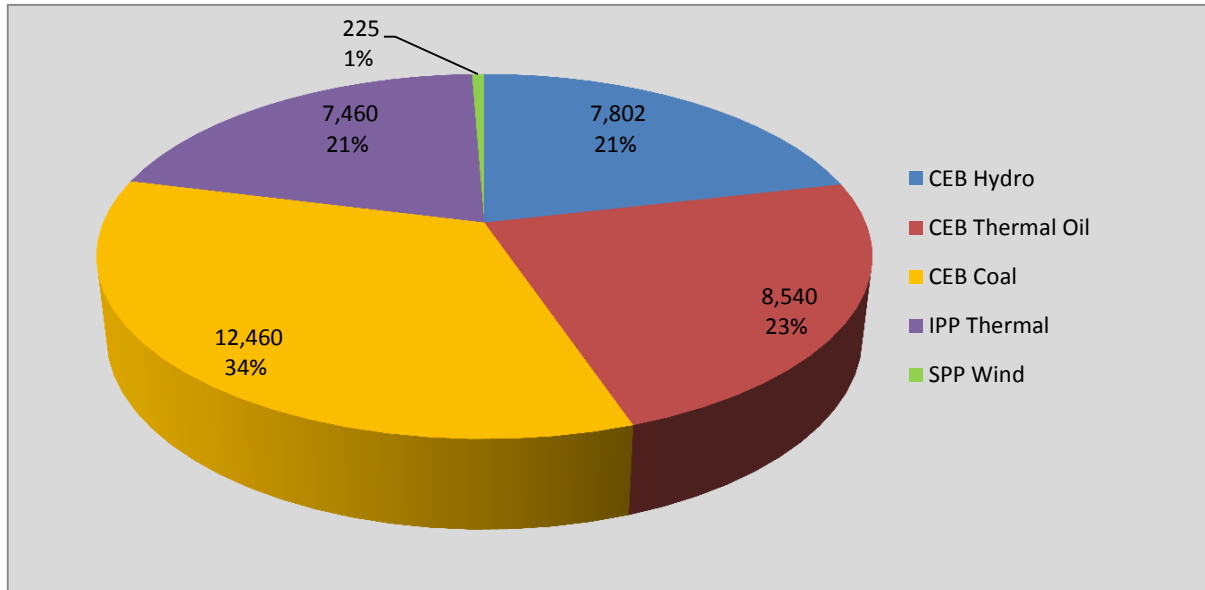
# **Generation and Reservoirs Statistics**

**November 17, 2016**



PUBLIC UTILITIES COMMISSION OF SRI LANKA

## Daily Generation Mix in MWh



**Total Generation 36,487 MWh**

Note: Generation from other SPPs (Mini Hydro, Solar and Biomass) is not included

## Cumulative Dispatch -January 1 to November 17, 2016

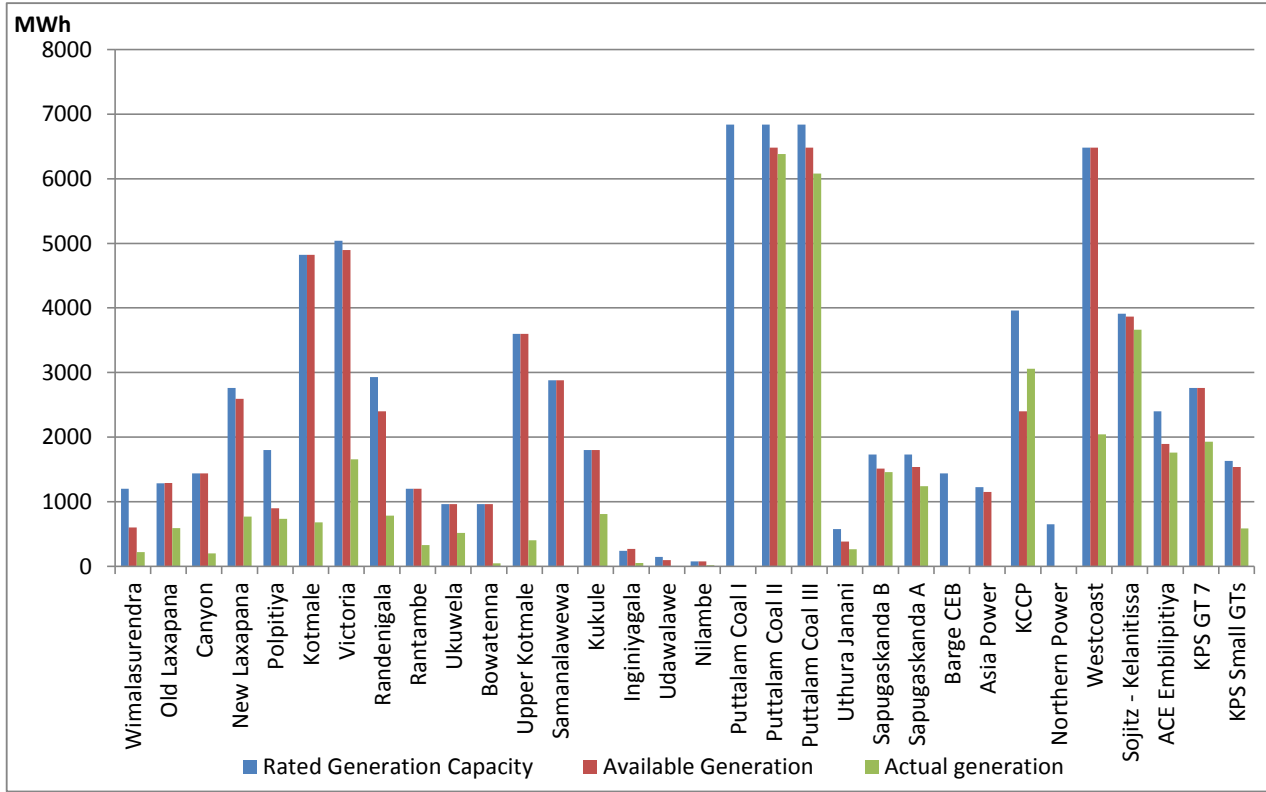
### For Current Month

| Category        | Dispatch (MWh)   |        |
|-----------------|------------------|--------|
| CEB Hydro       | 141,270.0        | 23.71% |
| CEB Thermal Oil | 149,890.0        | 25.16% |
| CEB Coal        | 194,090.0        | 32.58% |
| IPP Thermal     | 107,875.0        | 18.11% |
| SPP Wind        | 2,585.1          | 0.43%  |
| <b>Total</b>    | <b>595,710.1</b> |        |

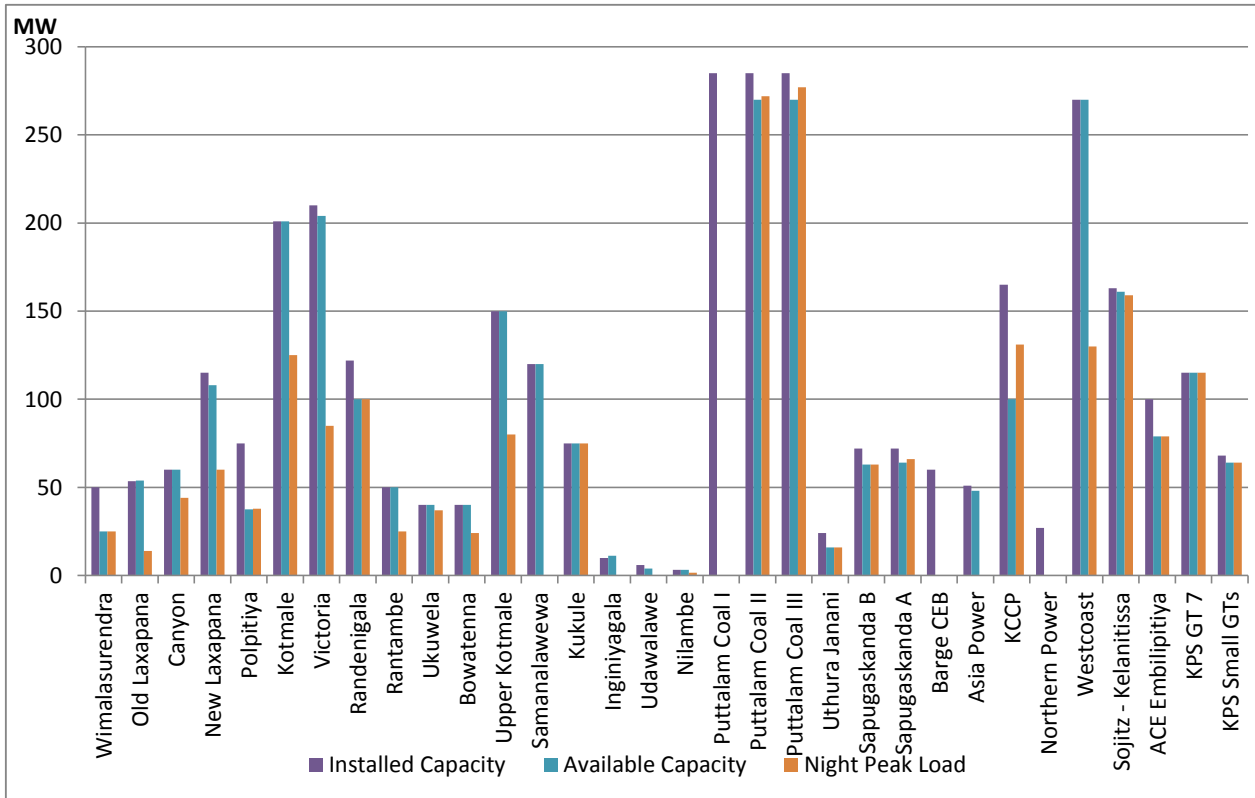
### For Current Year

| Category        | Dispatch (GWh) |        |
|-----------------|----------------|--------|
| CEB Hydro       | 3,193          | 25.78% |
| CEB Thermal Oil | 1,966          | 15.88% |
| CEB Coal        | 4,502          | 36.35% |
| IPP Thermal     | 1,801          | 14.54% |
| Renewable       | 923            | 7.45%  |
| <b>Total</b>    | <b>12,385</b>  |        |

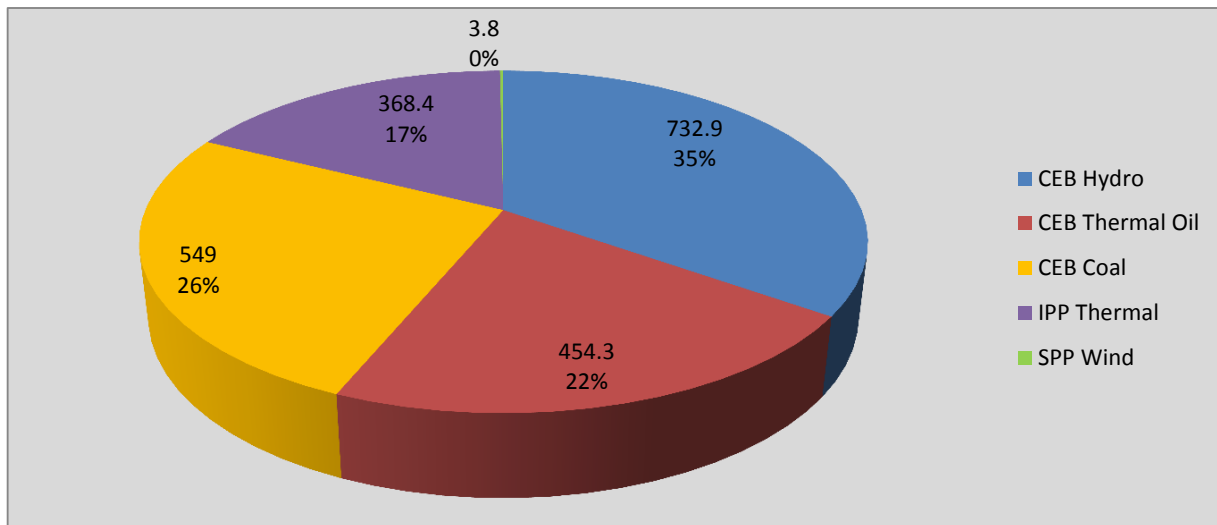
## Plant Dispatch on November 17, 2016



## Plant Loading at Night Peak on November 17, 2016



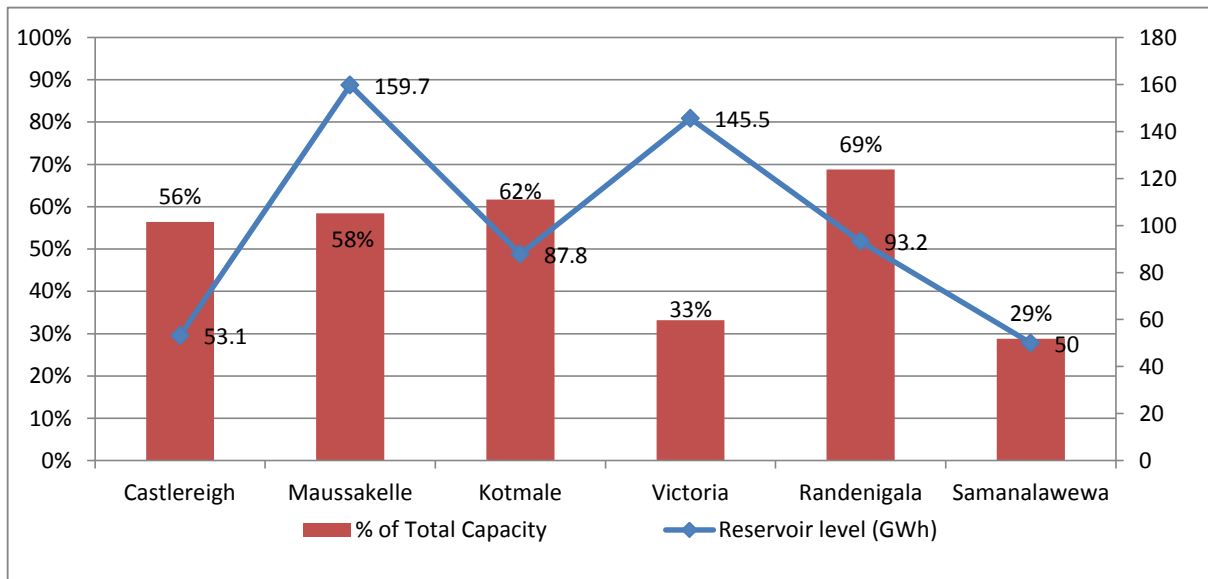
## Contribution to the Night Peak in MW



|                |            |
|----------------|------------|
| Night Peak     | 2,108.4 MW |
| Day Peak       | 1,878.7 MW |
| Minimum Demand | 963.0 MW   |

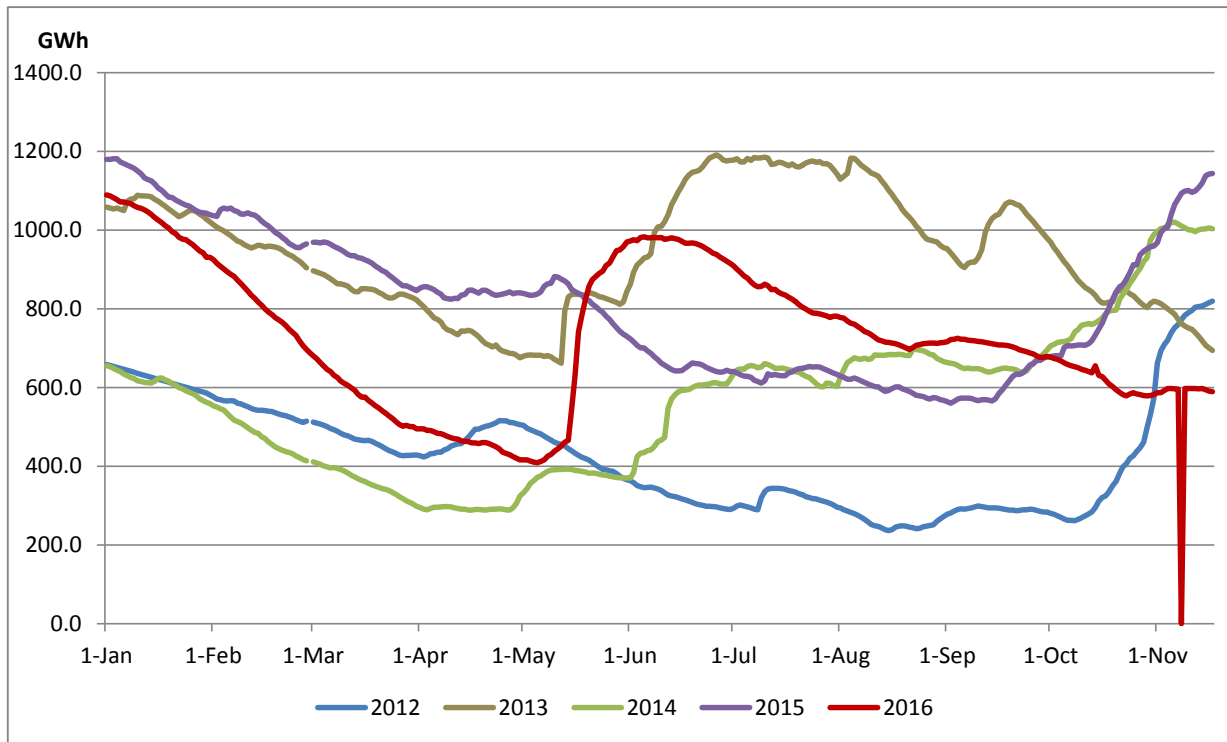
**Note:** Contribution from other SPPs (Mini Hydro, Solar and Biomass) is not included

## Reservoir Levels - as at 06.00 Hr on November 18, 2016

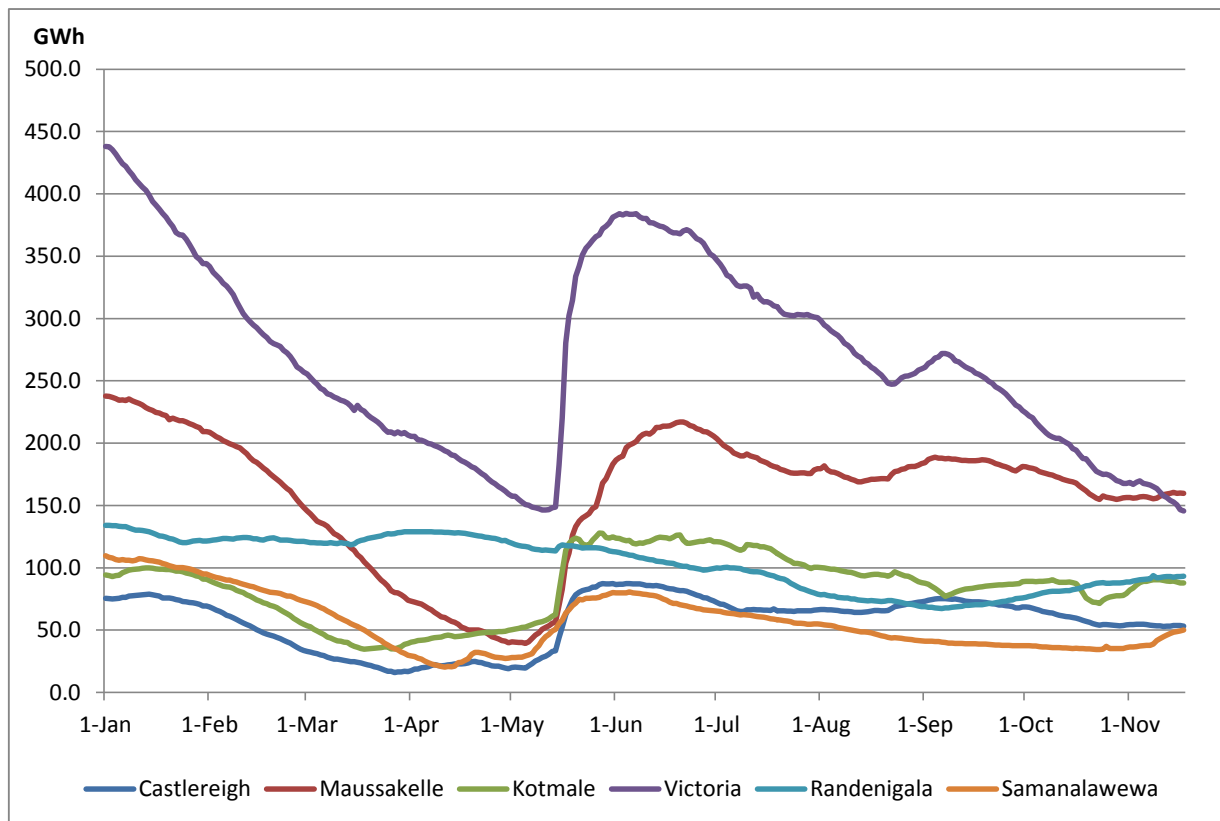


|                            |        |
|----------------------------|--------|
| Total Reservoir Level(GWh) | 589.2  |
| % of Total capacity        | 46.82% |

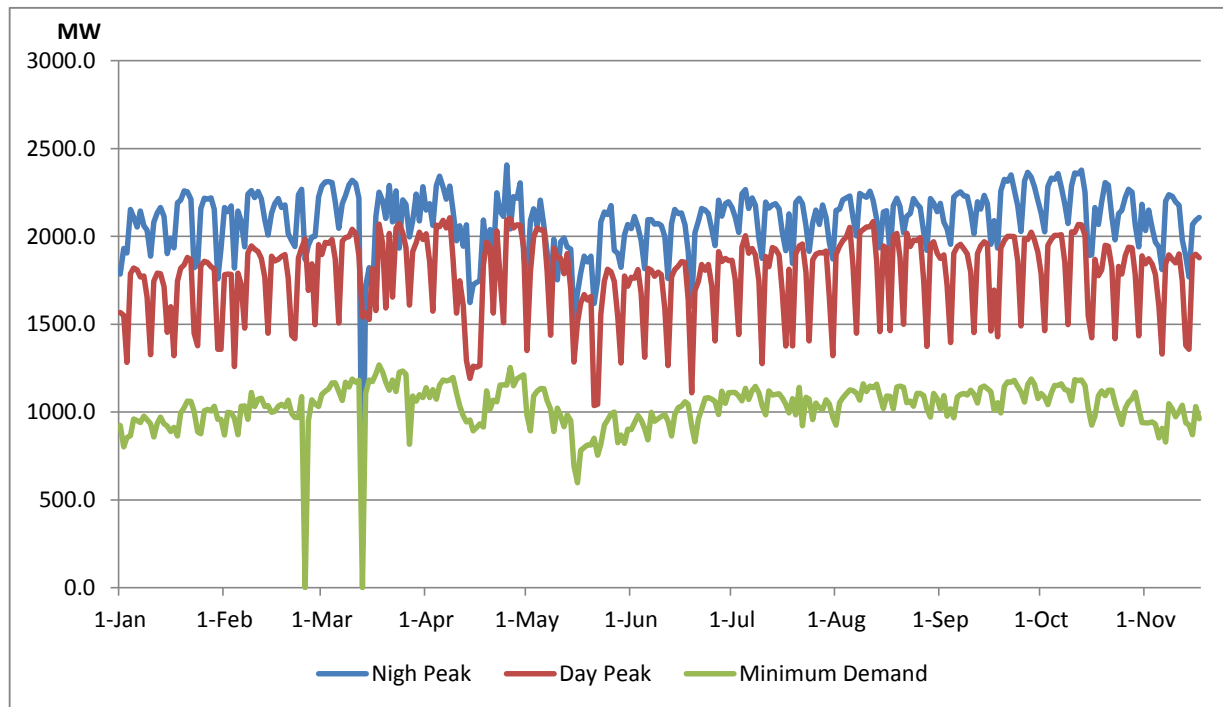
## Comparison of Total Reservoir Storage Levels with Past Years



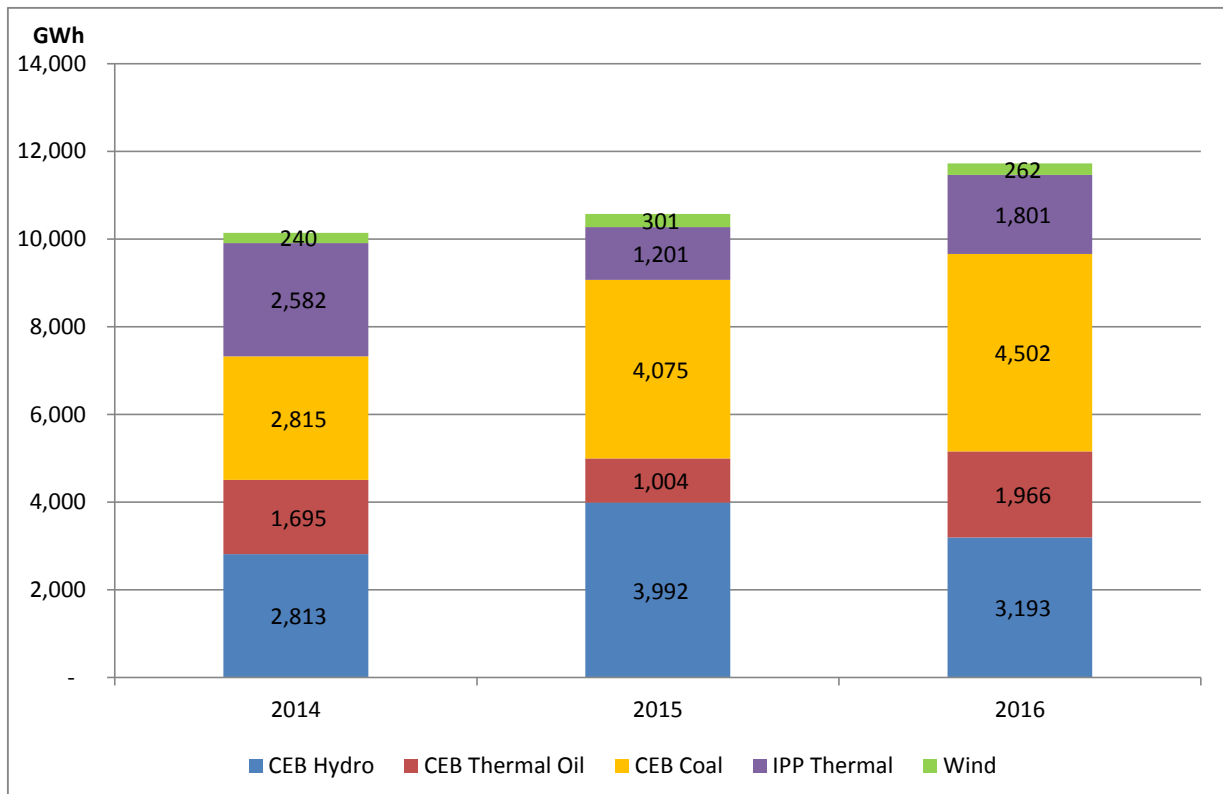
## Variation of Major Hydro Reservoir Levels in GWh- 2016



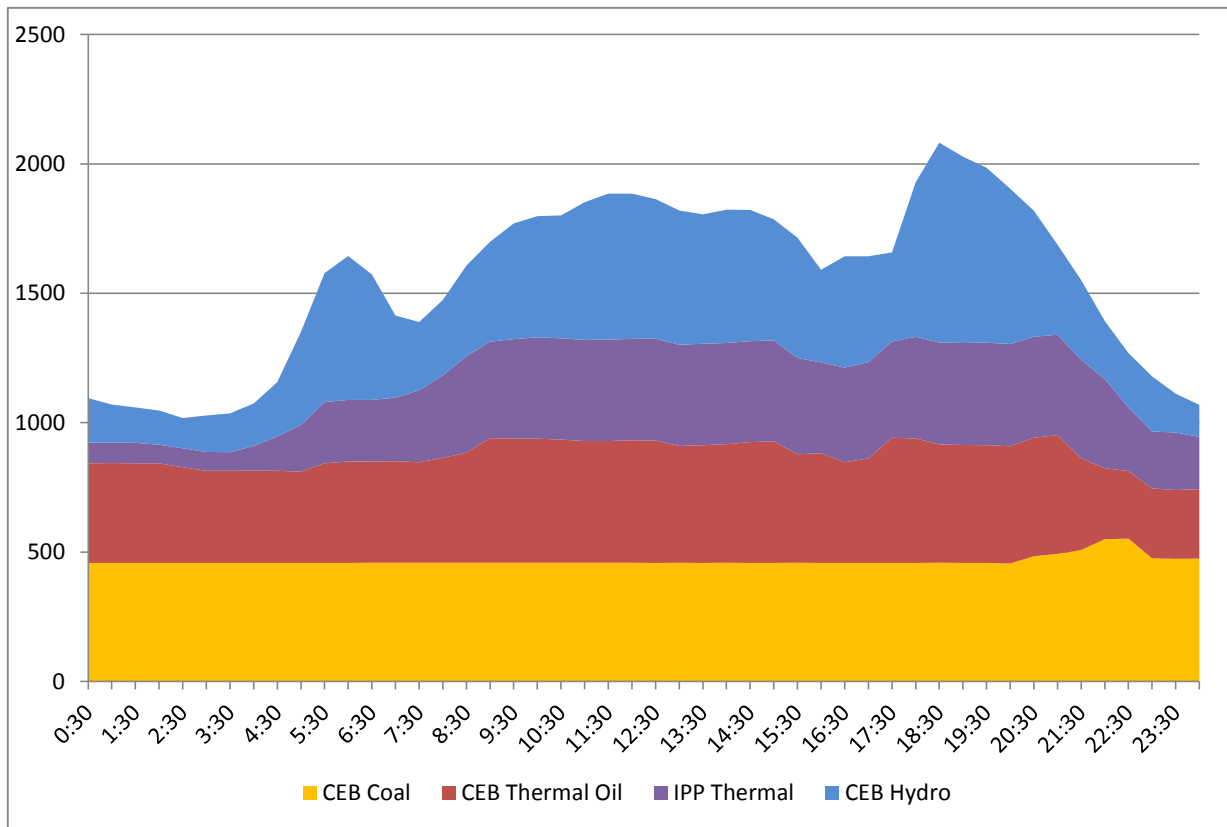
## Variation of Demand 2016



## Comparison of Cumulative Dispatch from January 1 - November 17, 2016



## Daily Load Curve - November 16, 2016



| <b>Power Station</b>          | <b>Capacity (MW)</b> | <b>Primary Fuel</b>     |
|-------------------------------|----------------------|-------------------------|
| <b>CEB Hydro</b>              |                      |                         |
| Victoria                      | 210                  |                         |
| Ukuwela                       | 40                   |                         |
| Kotmale                       | 201                  |                         |
| Randenigala                   | 122                  |                         |
| Rantambe                      | 49                   |                         |
| Bowatenna                     | 40                   |                         |
| Nilambe                       | 3.2                  |                         |
| Upper Kotmale                 | 150                  |                         |
| Old Laxapana                  | 50                   |                         |
| New Laxapana                  | 115                  |                         |
| Polpitiya                     | 75                   |                         |
| Wimalasurendra                | 50                   |                         |
| Canyon                        | 60                   |                         |
| Samanalawewa                  | 120                  |                         |
| Kukuleganga                   | 75                   |                         |
| Inginiyagala                  | 10                   |                         |
| Udawalawe                     | 6                    |                         |
|                               |                      |                         |
| <b>CEB Thermal</b>            |                      |                         |
| Sapugaskanda 1                | 72                   | Heavy Fuel              |
| Sapugaskanda 2                | 72                   | Heavy Fuel              |
| Kelanitissa Small Gas Turb    | 68                   | Auto Diesel             |
| GT 7 - Kelanitissa            | 115                  | Auto Diesel             |
| Kelanitissa CCY               | 165                  | Naptha & Diesel         |
| Lakvijaya (Puttalam Coal)     | 285                  | Coal                    |
| Lakvijaya (Puttalam Coal)     | 285                  | Coal                    |
| Lakvijaya (Puttalam Coal)     | 285                  | Coal                    |
| Uthuru Janani                 | 24                   | Heavy Fuel              |
| Barge CEB                     | 60                   | Furnace Oil             |
|                               |                      |                         |
| <b>Private Thermal (IPPs)</b> |                      |                         |
| Asia Power                    | 51                   | Heavy Fuel              |
| Sojitz - Kelanitissa          | 163                  | Auto Diesel             |
| West Coast                    | 270                  | Low Sulphur Furnace oil |
| Northern Power                | 27                   | Auto Diesel             |
| ACE Embilipitiya              | 100                  | Furnace Oil             |