

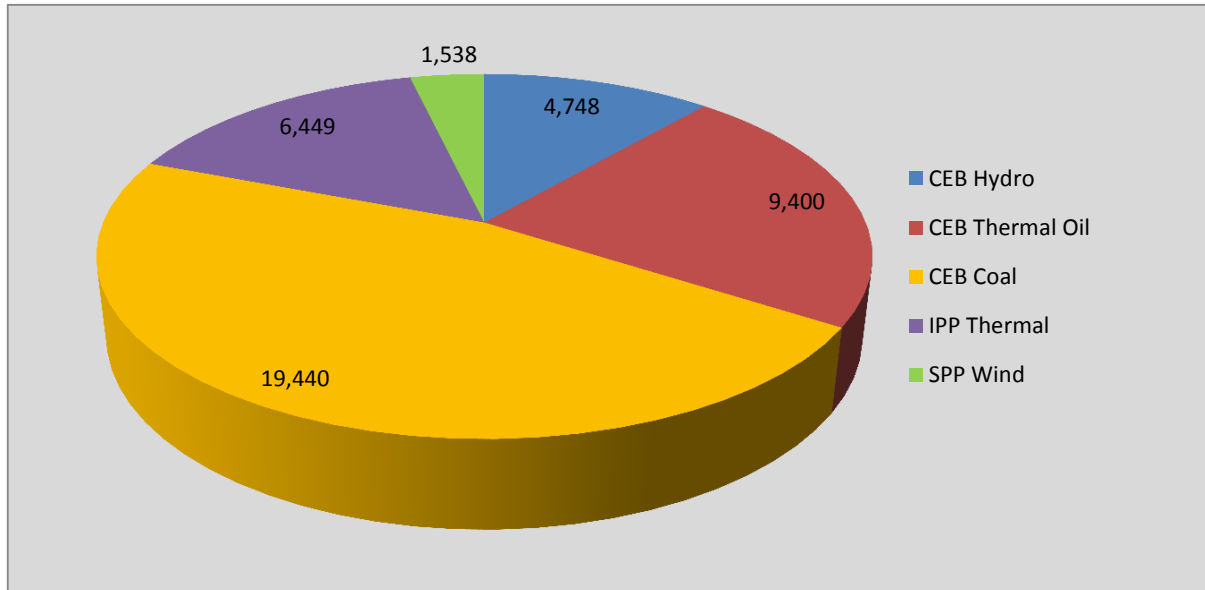
Generation and Reservoirs Statistics

October 11, 2016



PUBLIC UTILITIES COMMISSION OF SRI LANKA

Daily Generation Mix in MWh



Total Generation 41,574 MWh

Note: Generation from other SPPs (Mini Hydro, Solar and Biomass) is not included

Cumulative Dispatch -January 1 to October 11, 2016

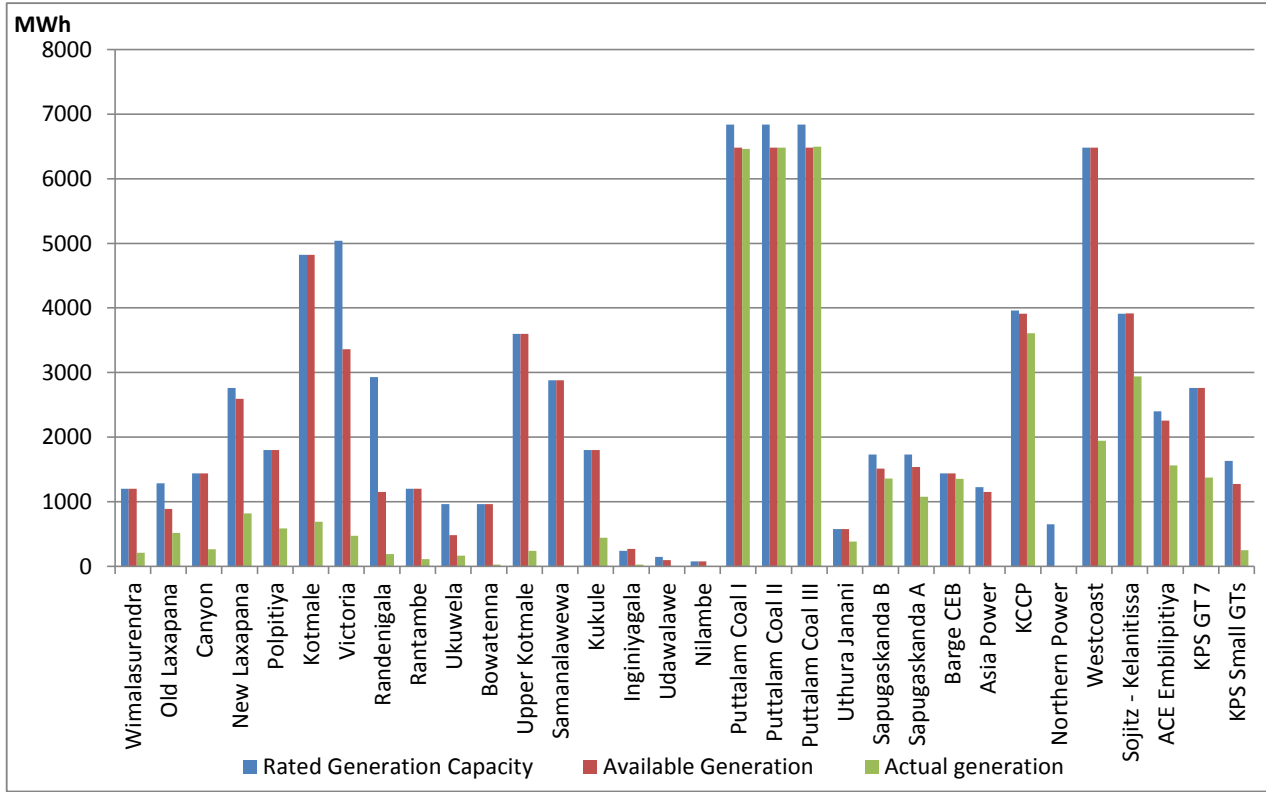
For Current Month

Category	Dispatch (MWh)	
CEB Hydro	64,218.0	15.14%
CEB Thermal Oil	69,090.0	16.29%
CEB Coal	184,460.0	43.49%
IPP Thermal	91,172.0	21.50%
SPP Wind	15,155.5	3.57%
Total	424,095.5	

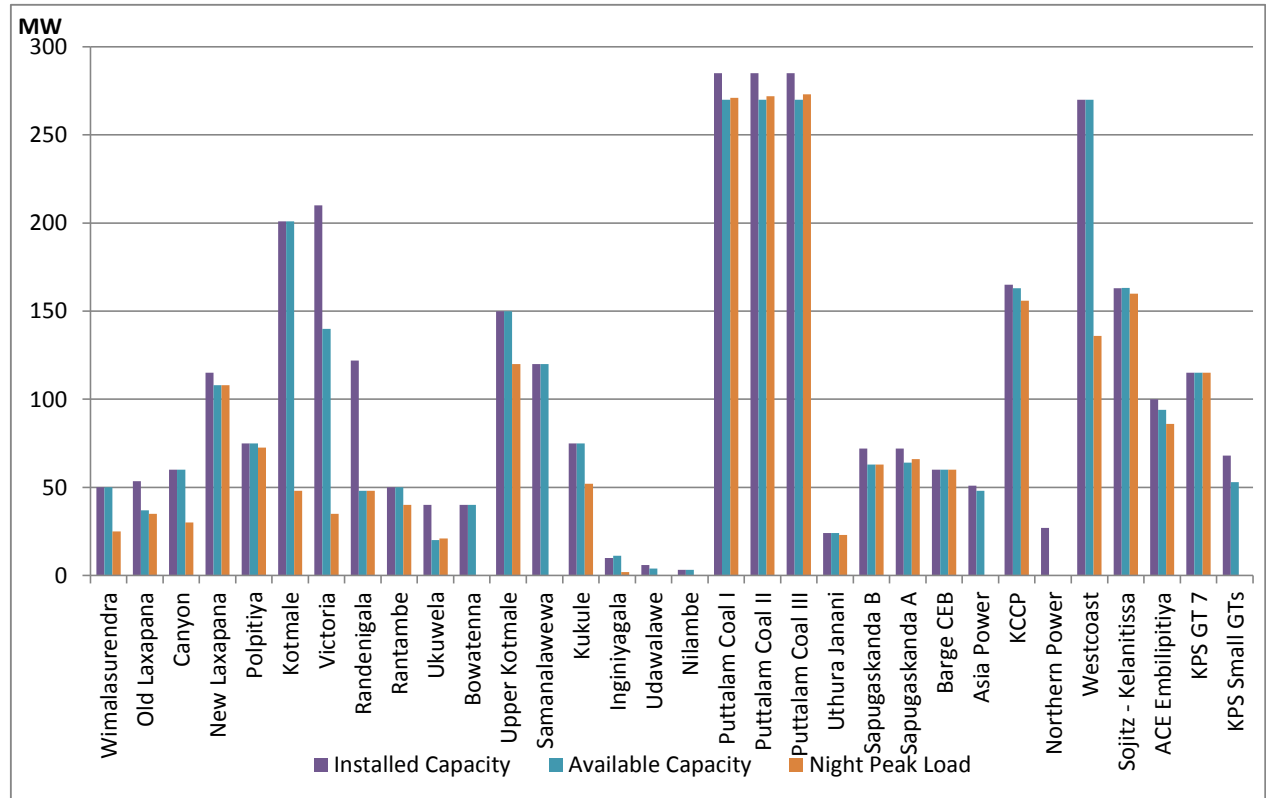
For Current Year

Category	Dispatch (GWh)	
CEB Hydro	2,900	26.44%
CEB Thermal Oil	1,624	14.80%
CEB Coal	4,112	37.48%
IPP Thermal	1,499	13.67%
Renewable	834	7.60%
Total	10,969	

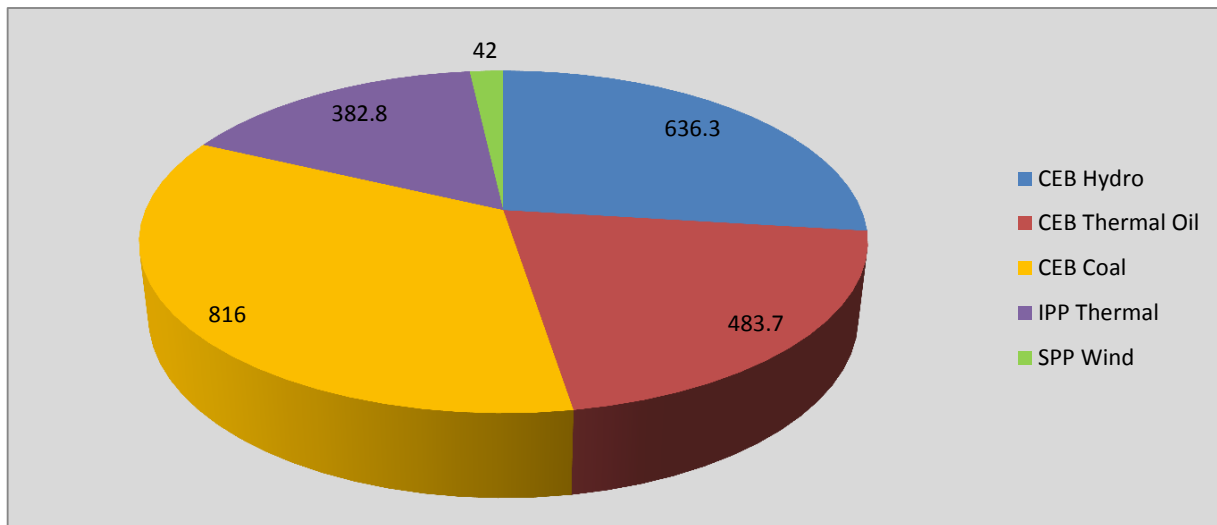
Plant Dispatch on October 11, 2016



Plant Loading at Night Peak on October 11, 2016



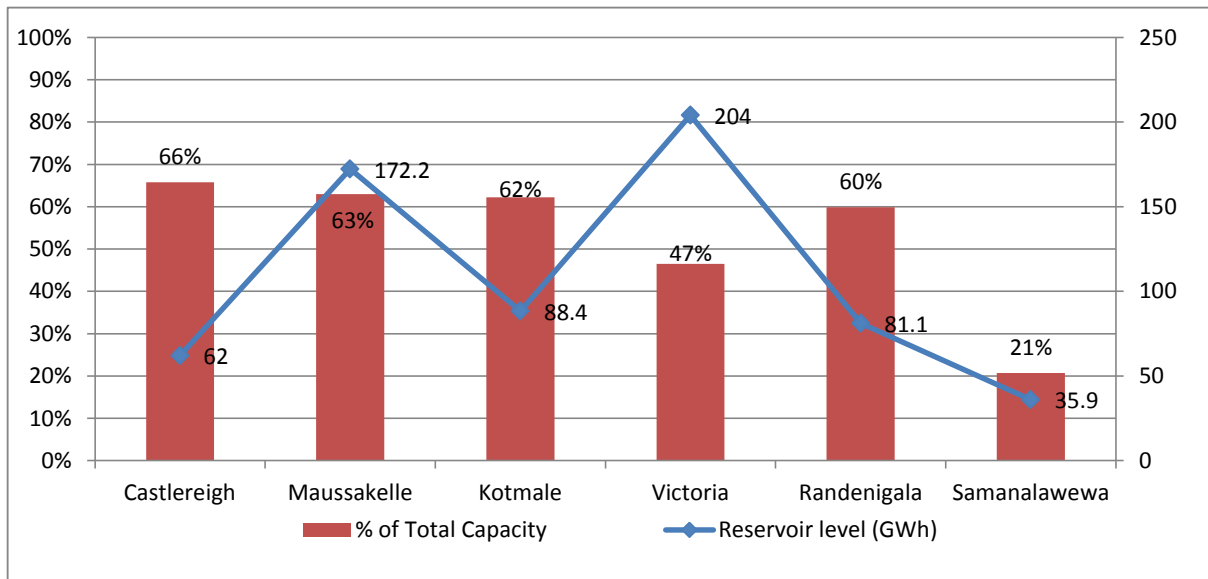
Contribution to the Night Peak in MW



Night Peak	2,360.8 MW
Day Peak	2,021.5 MW
Minimum Demand	1,183.9 MW

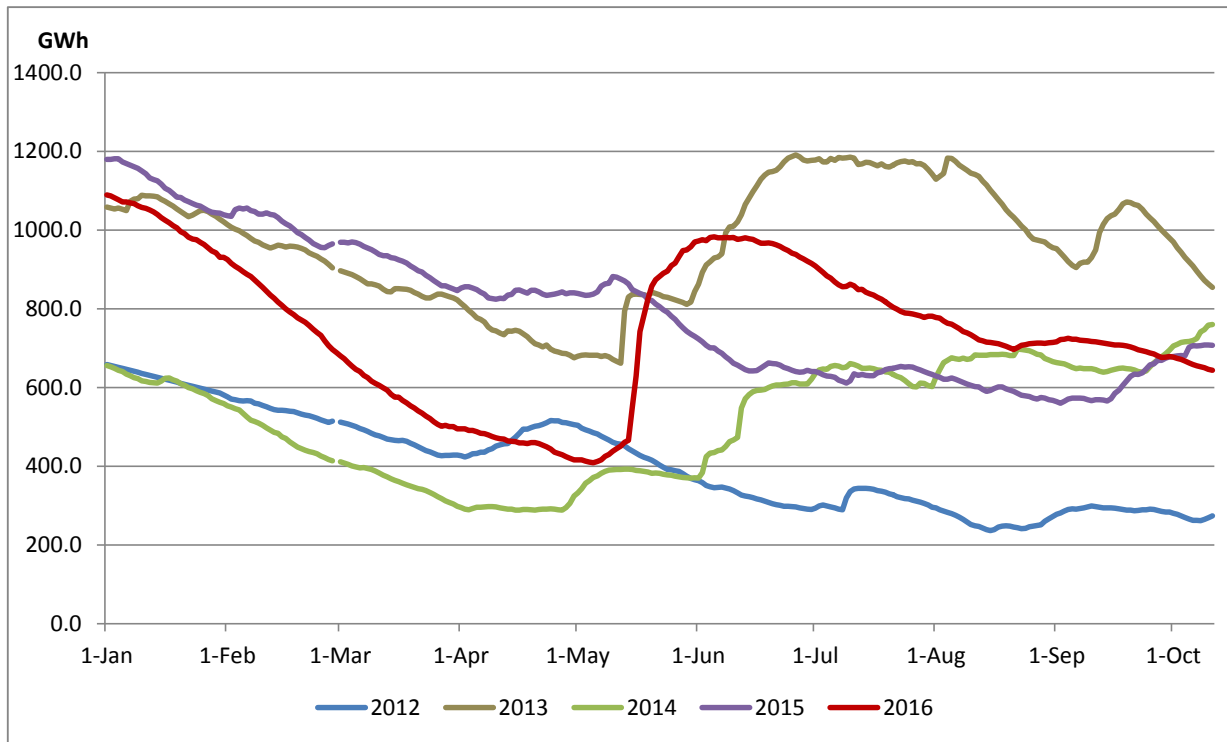
Note: Contribution from other SPPs (Mini Hydro, Solar and Biomass) is not included

Reservoir Levels - as at 06.00 Hr on October 12, 2016

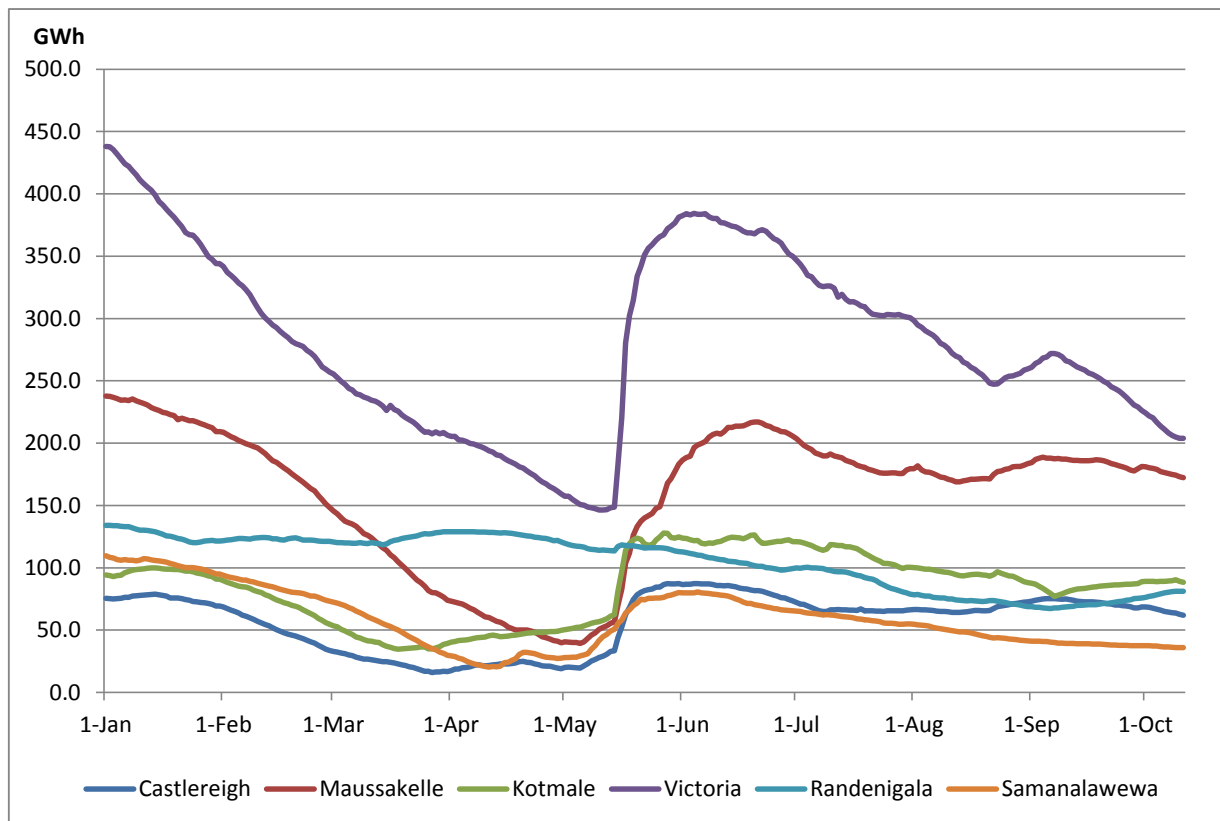


Total Reservoir Level(GWh)	643.7
% of Total capacity	51.15%

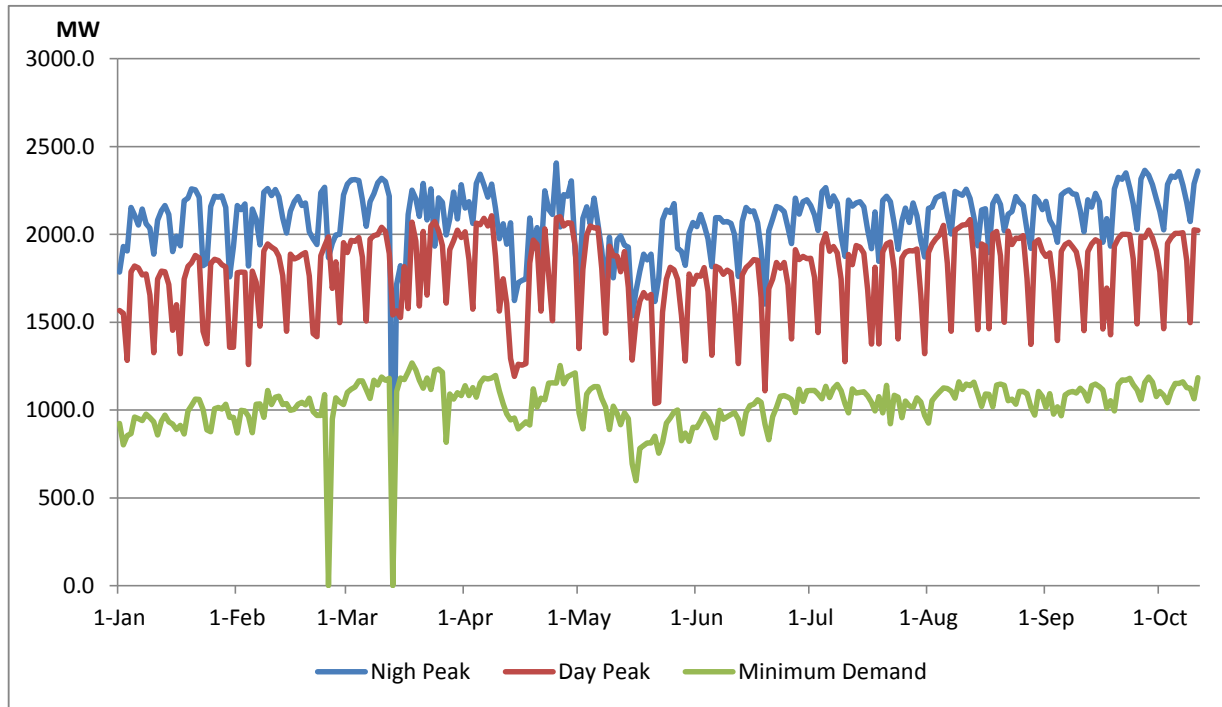
Comparison of Total Reservoir Storage Levels with Past Years



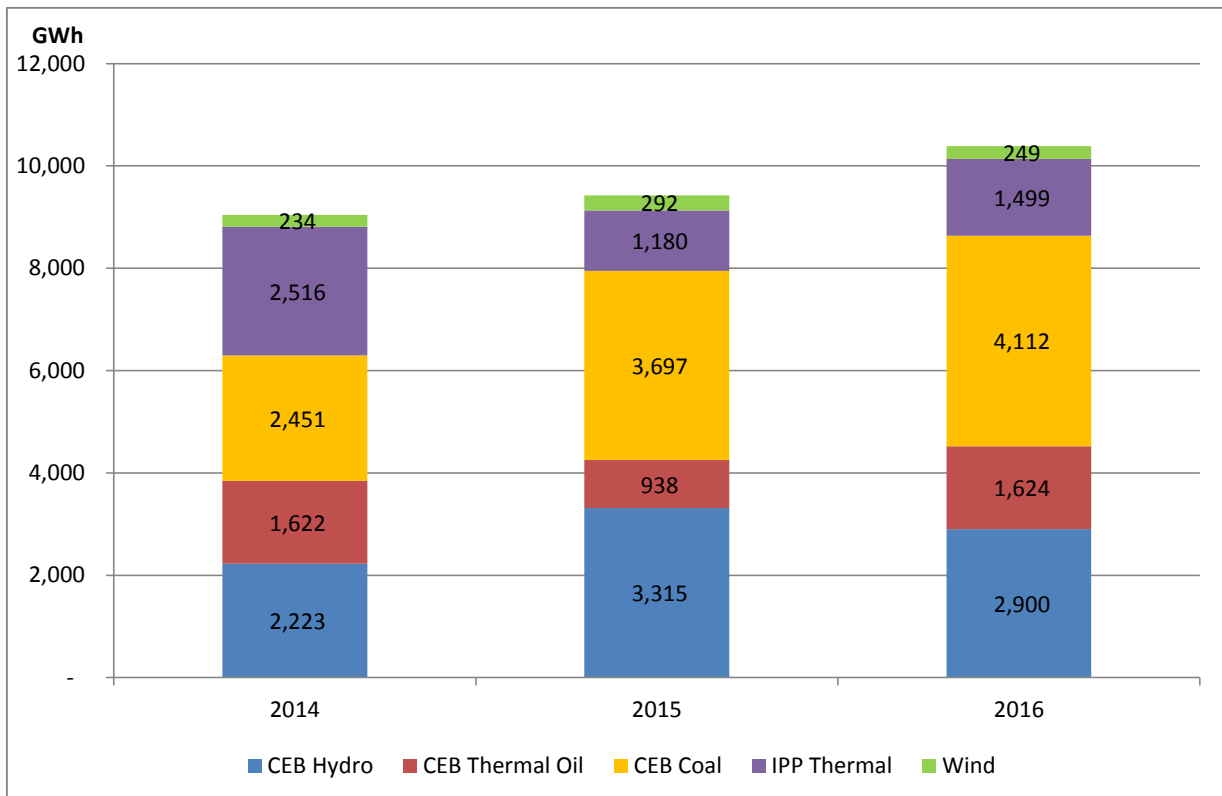
Variation of Major Hydro Reservoir Levels in GWh- 2016



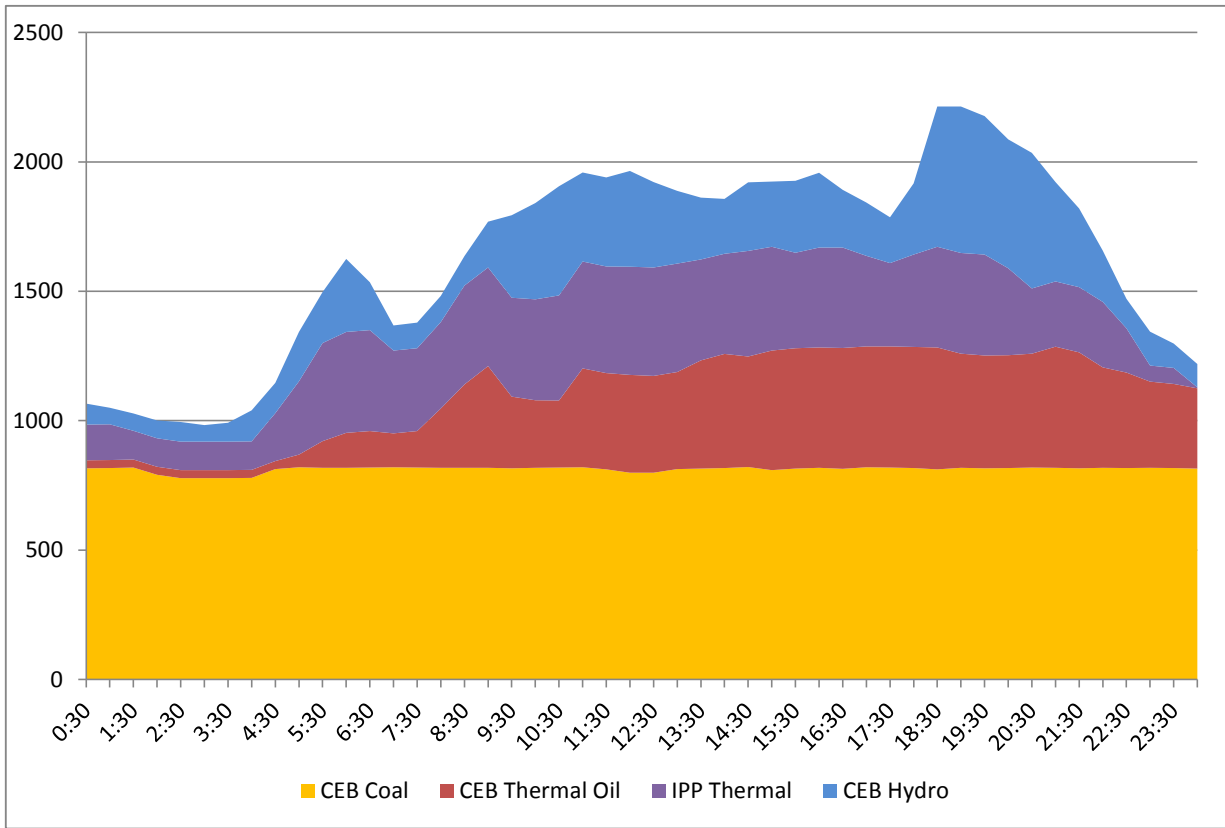
Variation of Demand 2016



Comparison of Cumulative Dispatch from January 1 - October 11, 2016



Daily Load Curve - October 10, 2016



Power Station	Capacity (MW)	Primary Fuel
CEB Hydro		
Victoria	210	
Ukuwela	40	
Kotmale	201	
Randenigala	122	
Rantambe	49	
Bowatenna	40	
Nilambe	3.2	
Upper Kotmale	150	
Old Laxapana	50	
New Laxapana	115	
Polpitiya	75	
Wimalasurendra	50	
Canyon	60	
Samanalawewa	120	
Kukuleganga	75	
Inginiyagala	10	
Udawalawe	6	
CEB Thermal		
Sapugaskanda 1	72	Heavy Fuel
Sapugaskanda 2	72	Heavy Fuel
Kelanitissa Small Gas Turb	68	Auto Diesel
GT 7 - Kelanitissa	115	Auto Diesel
Kelanitissa CCY	165	Naptha & Diesel
Lakvijaya (Puttalam Coal)	285	Coal
Lakvijaya (Puttalam Coal)	285	Coal
Lakvijaya (Puttalam Coal)	285	Coal
Uthuru Janani	24	Heavy Fuel
Barge CEB	60	Furnace Oil
Private Thermal (IPPs)		
Asia Power	51	Heavy Fuel
Sojitz - Kelanitissa	163	Auto Diesel
West Coast	270	Low Sulphur Furnace oil
Northern Power	27	Auto Diesel
ACE Embilipitiya	100	Furnace Oil