

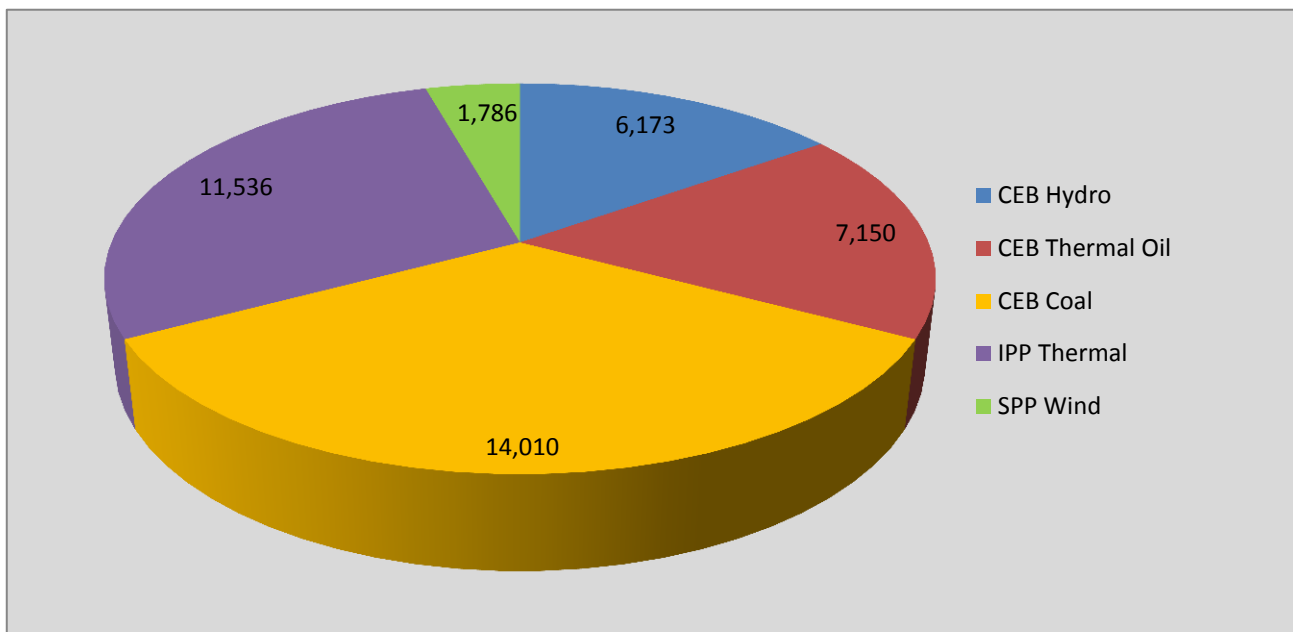
# **Generation and Reservoirs Statistics**

**October 7, 2016**



**PUBLIC UTILITIES COMMISSION OF SRI LANKA**

## Daily Generation Mix in MWh



**Total Generation 40,657 MWh**

Note: Generation from other SPPs (Mini Hydro, Solar and Biomass) is not included

## Cumulative Dispatch -January 1 to October 7, 2016

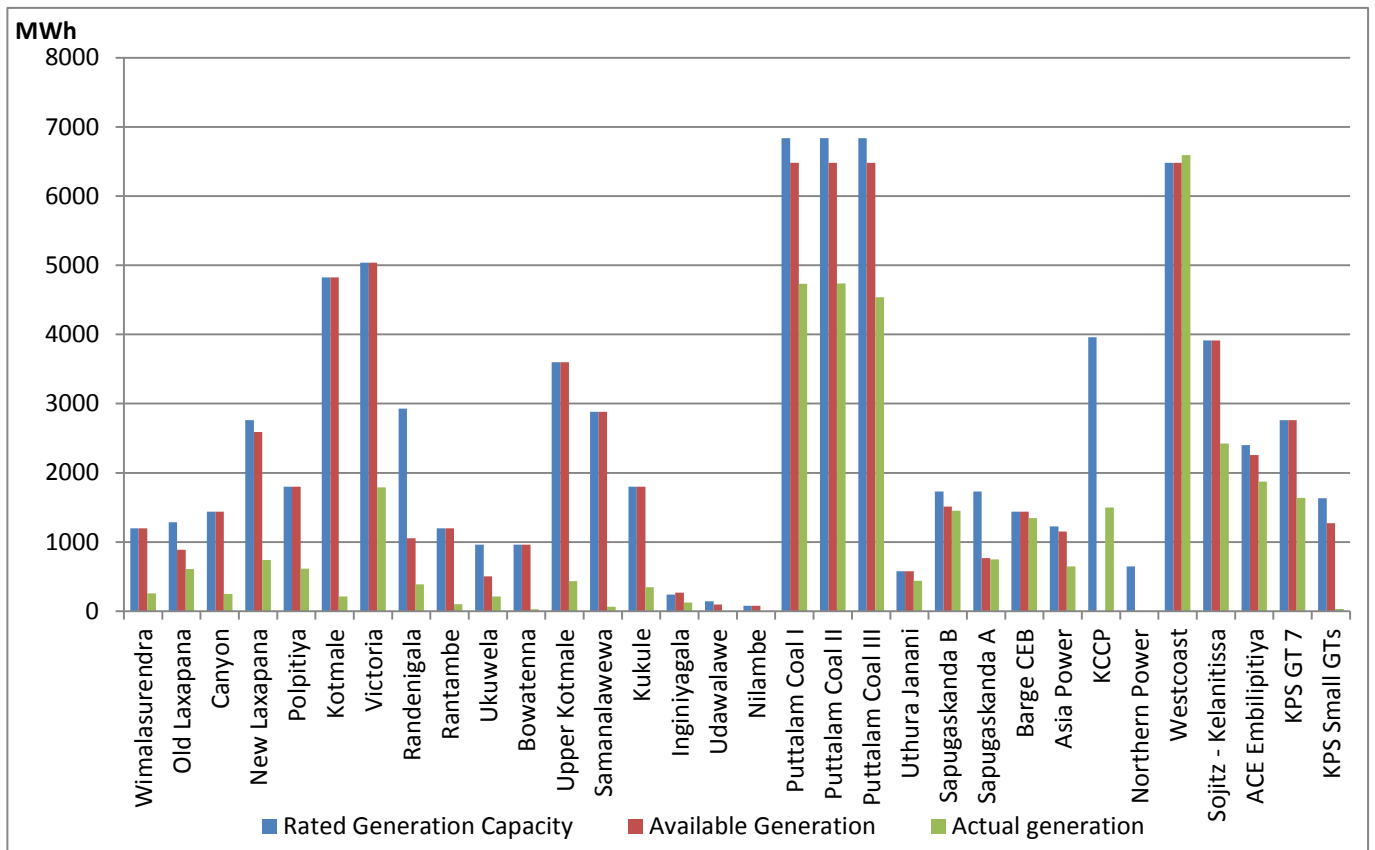
### For Current Month

Category	Dispatch (MWh)	
CEB Hydro	43,982.0	16.27%
CEB Thermal Oil	43,740.0	16.18%
CEB Coal	116,160.0	42.96%
IPP Thermal	58,120.0	21.50%
SPP Wind	8,379.4	3.10%
<b>Total</b>	<b>270,381.4</b>	

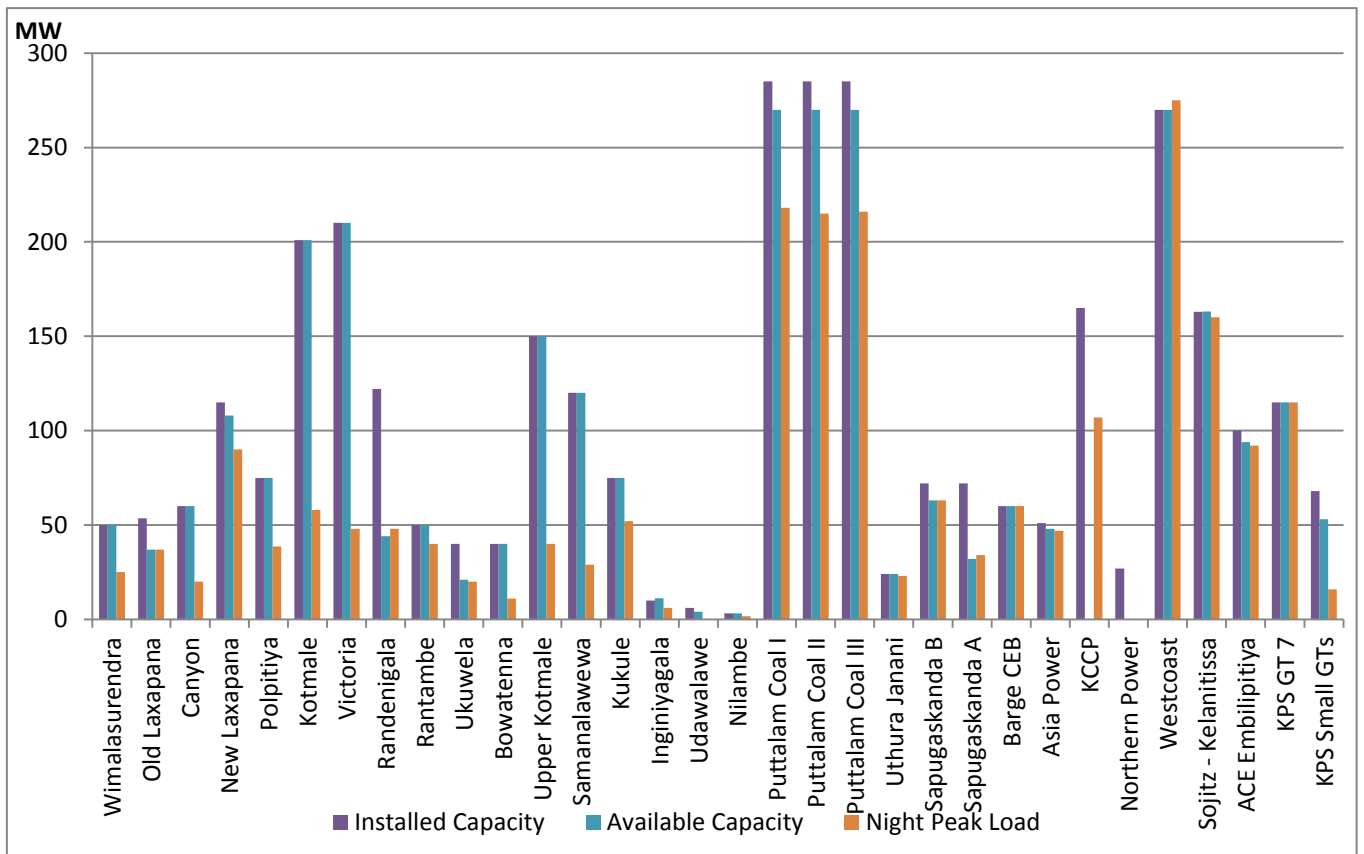
### For Current Year

Category	Dispatch (GWh)	
CEB Hydro	2,880	26.63%
CEB Thermal Oil	1,598	14.78%
CEB Coal	4,043	37.39%
IPP Thermal	1,466	13.56%
Renewable	827	7.65%
<b>Total</b>	<b>10,816</b>	

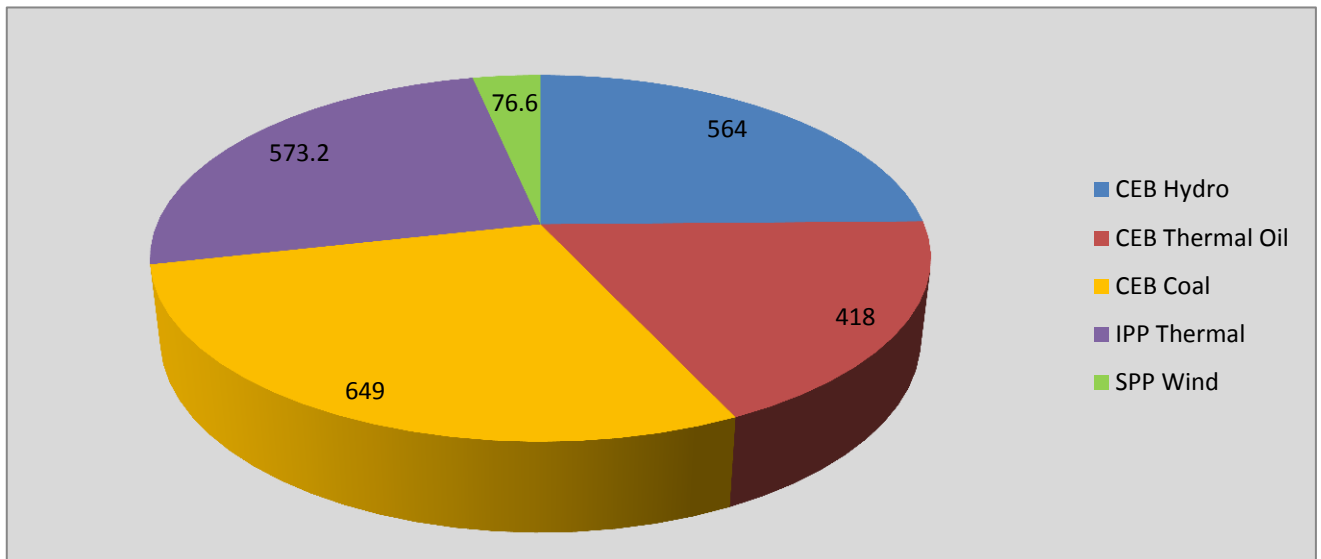
## Plant Dispatch on October 7, 2016



## Plant Loading at Night Peak on October 7, 2016



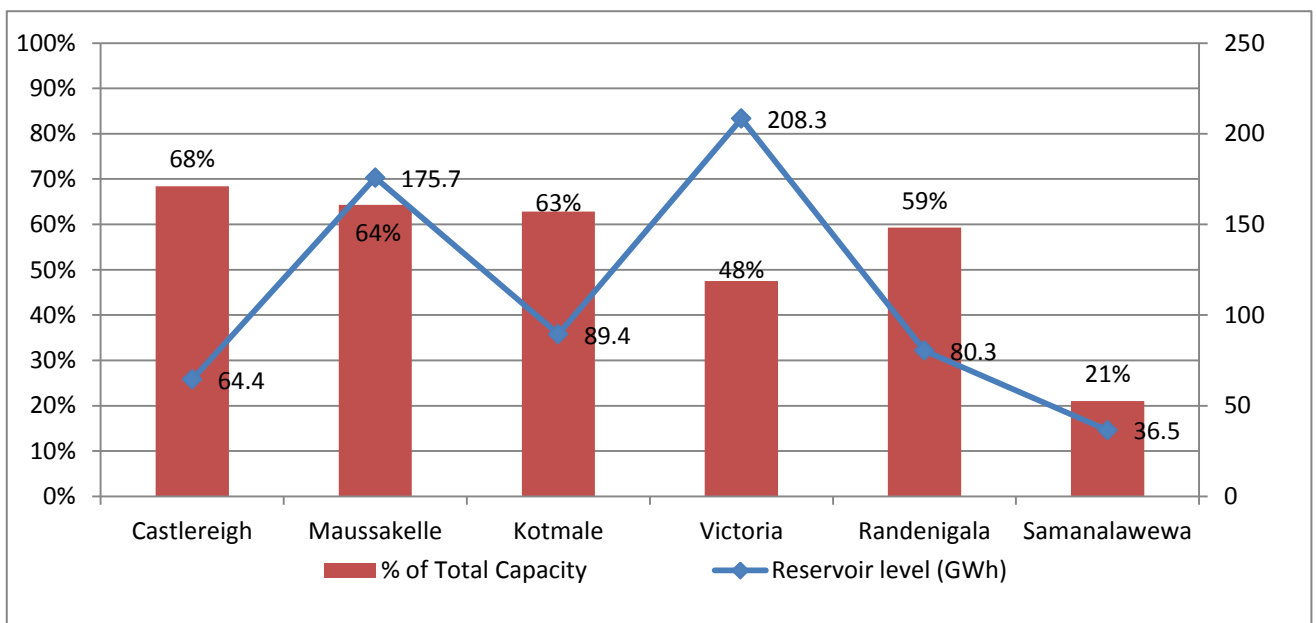
## Contribution to the Night Peak in MW



Night Peak	2,280.8 MW
Day Peak	2,008.8 MW
Minimum Demand	1,161.8 MW

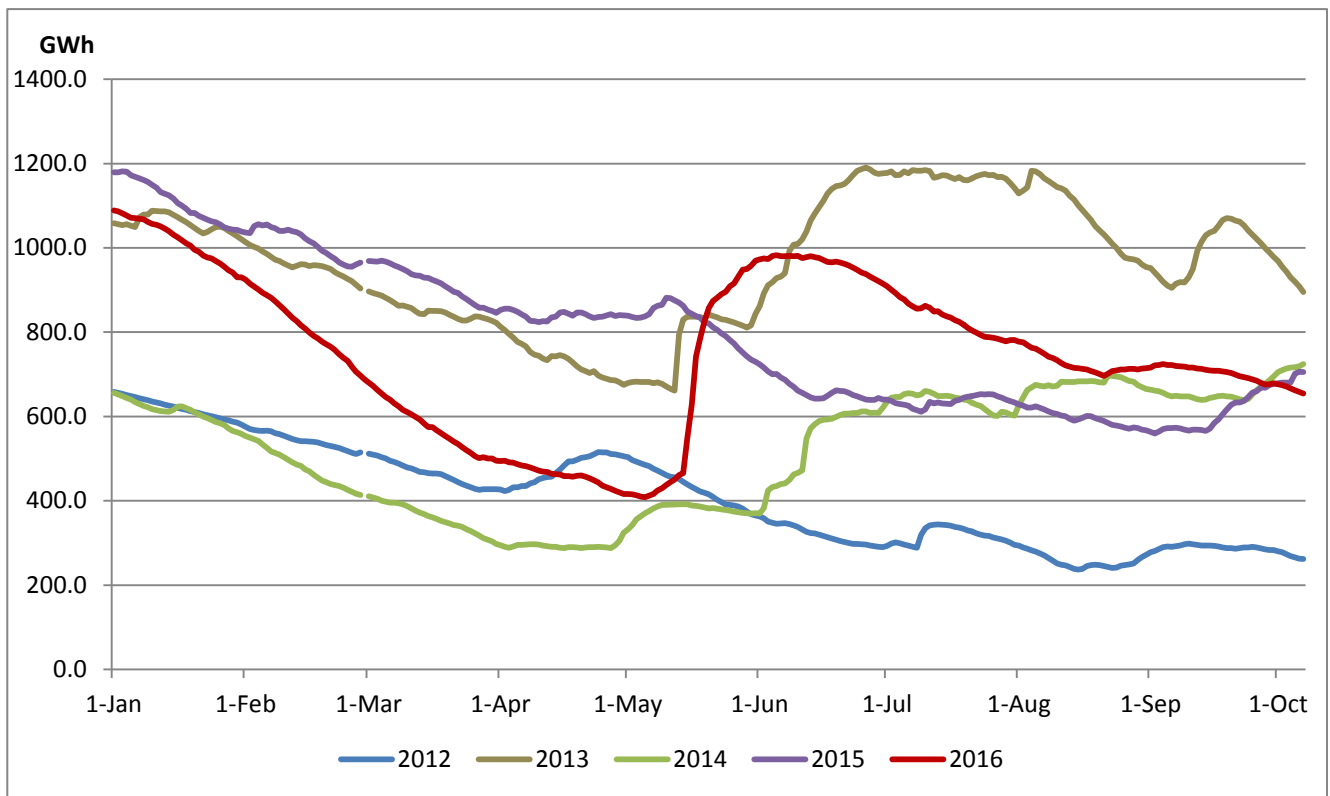
**Note:** Contribution from other SPPs (Mini Hydro, Solar and Biomass) is not included

## Reservoir Levels - as at 06.00 Hr on October 8, 2016

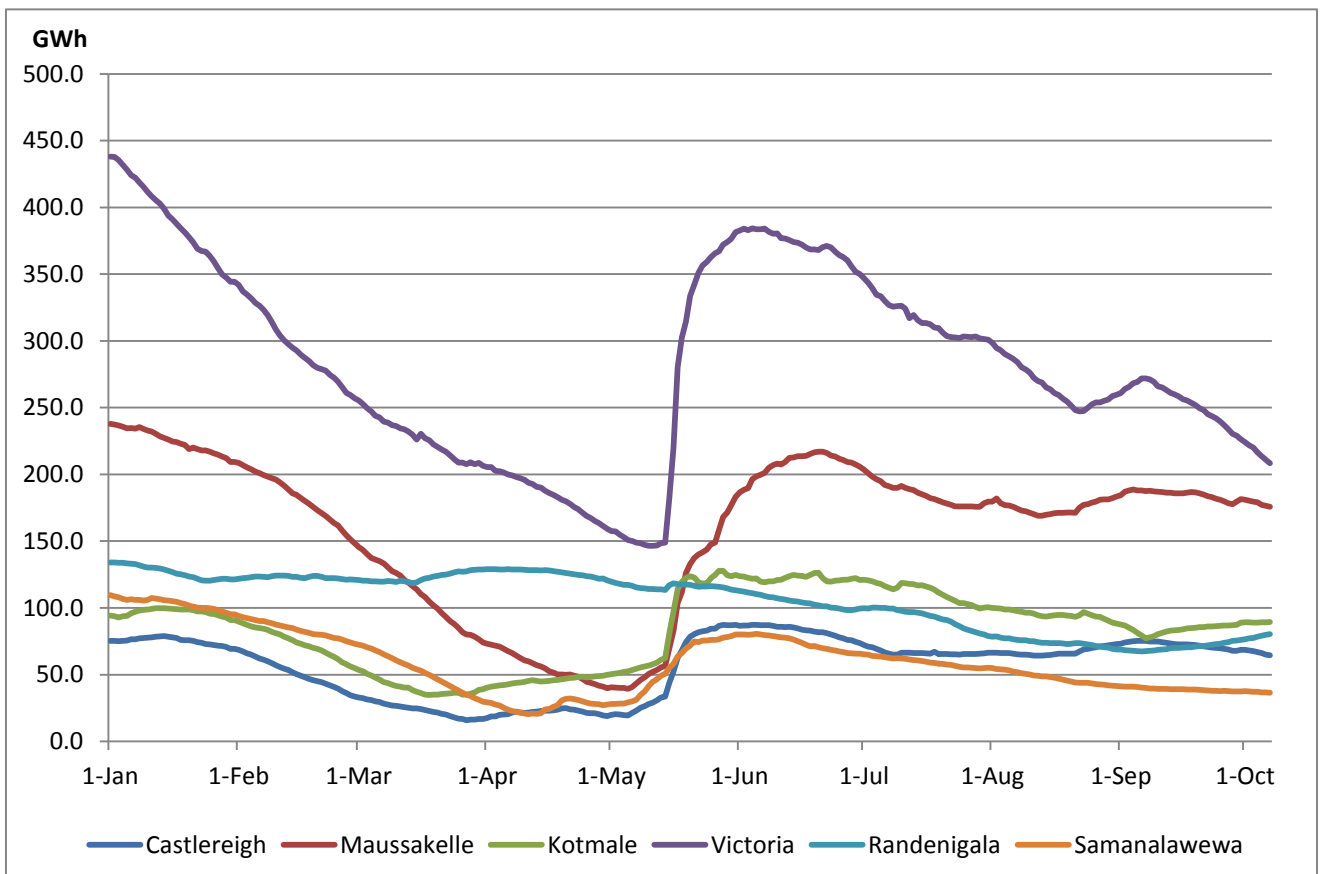


Total Reservoir Level(GWh)	654.6
% of Total capacity	52.02%

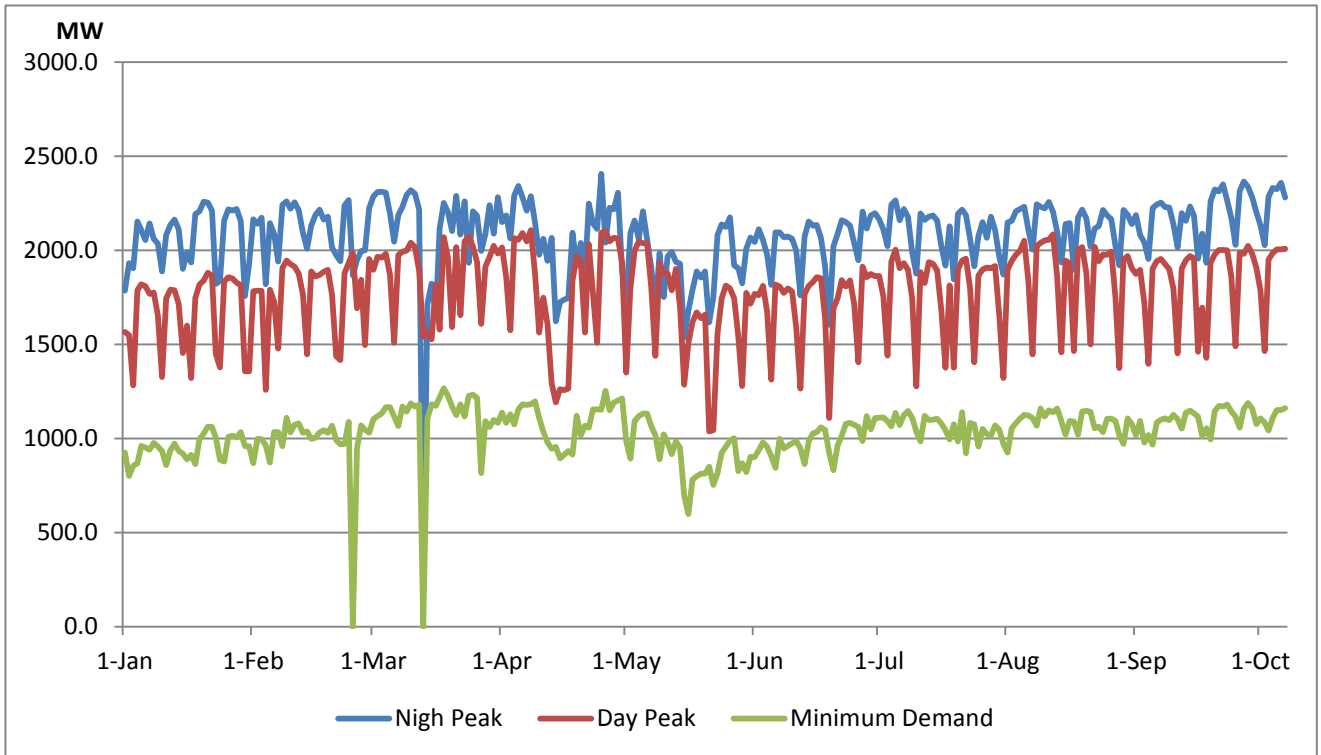
## Comparison of Total Reservoir Storage Levels with Past Years



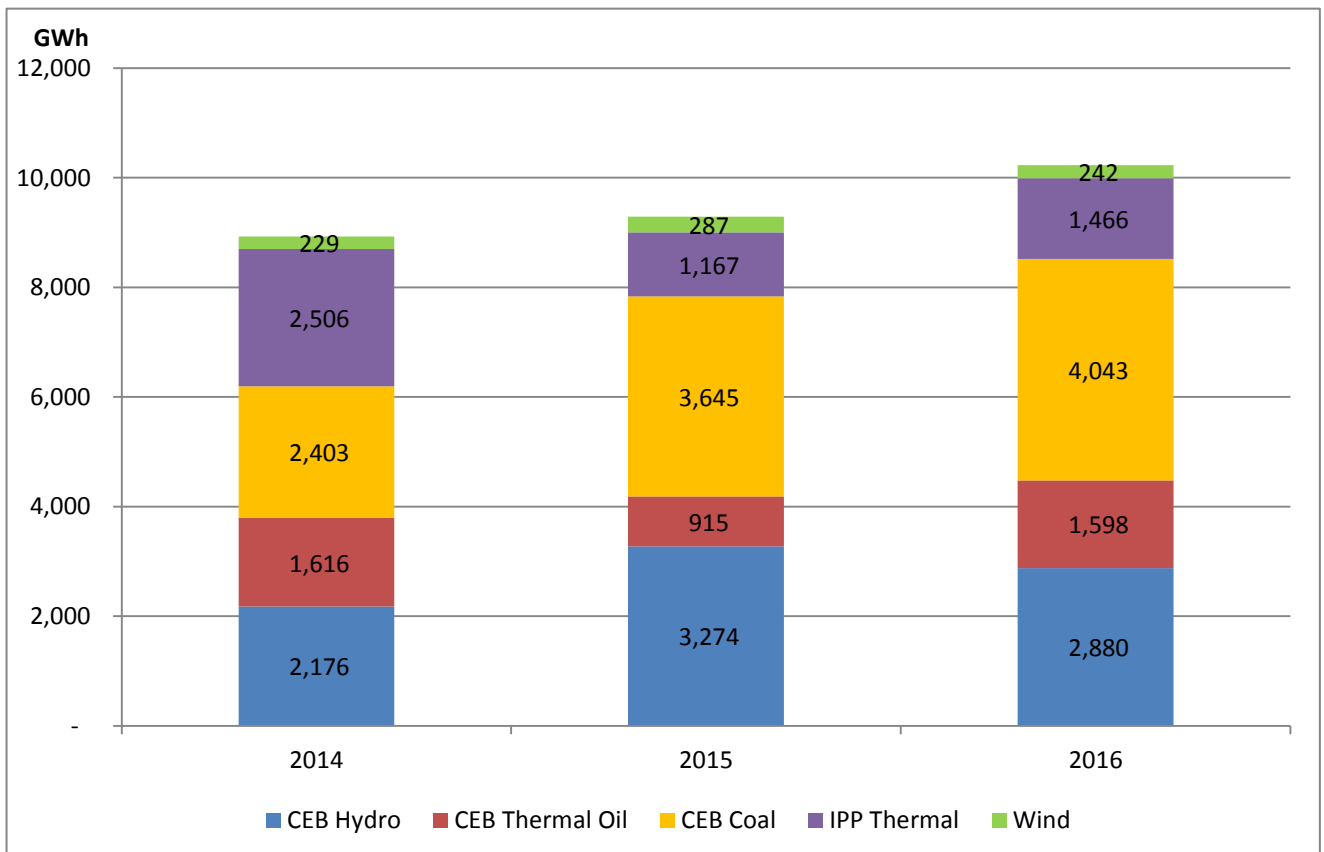
## Variation of Major Hydro Reservoir Levels in GWh- 2016



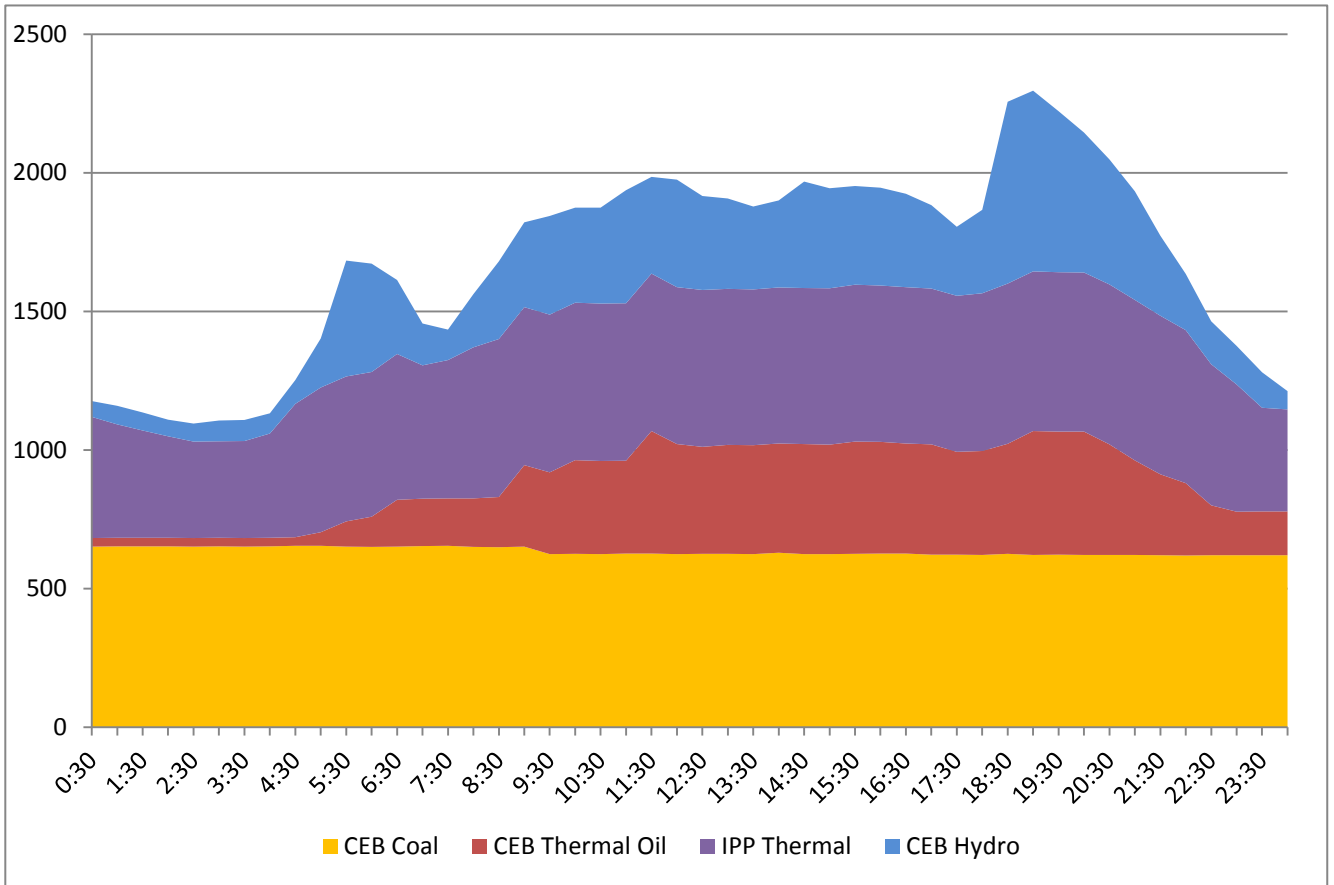
## Variation of Demand 2016



## Comparison of Cumulative Dispatch from January 1 - October 7, 2016



## Daily Load Curve - October 6, 2016



Power Station	Capacity (MW)	Primary Fuel
<b>CEB Hydro</b>		
Victoria	210	
Ukuwela	40	
Kotmale	201	
Randenigala	122	
Rantambe	49	
Bowatenna	40	
Nilambe	3.2	
Upper Kotmale	150	
Old Laxapana	50	
New Laxapana	115	
Polpitiya	75	
Wimalasurendra	50	
Canyon	60	
Samanalawewa	120	
Kukuleganga	75	
Inginiyagala	10	
Udawalawe	6	
<b>CEB Thermal</b>		
Sapugaskanda 1	72	Heavy Fuel
Sapugaskanda 2	72	Heavy Fuel
Kelanitissa Small Gas Turb	68	Auto Diesel
GT 7 - Kelanitissa	115	Auto Diesel
Kelanitissa CCY	165	Naptha & Diesel
Lakvijaya (Puttalam Coal)	285	Coal
Lakvijaya (Puttalam Coal)	285	Coal
Lakvijaya (Puttalam Coal)	285	Coal
Uthuru Janani	24	Heavy Fuel
Barge CEB	60	Furnace Oil
<b>Private Thermal (IPPs)</b>		
Asia Power	51	Heavy Fuel
Sojitz - Kelanitissa	163	Auto Diesel
West Coast	270	Low Sulphur Furnace oil
Northern Power	27	Auto Diesel
ACE Embilipitiya	100	Furnace Oil