

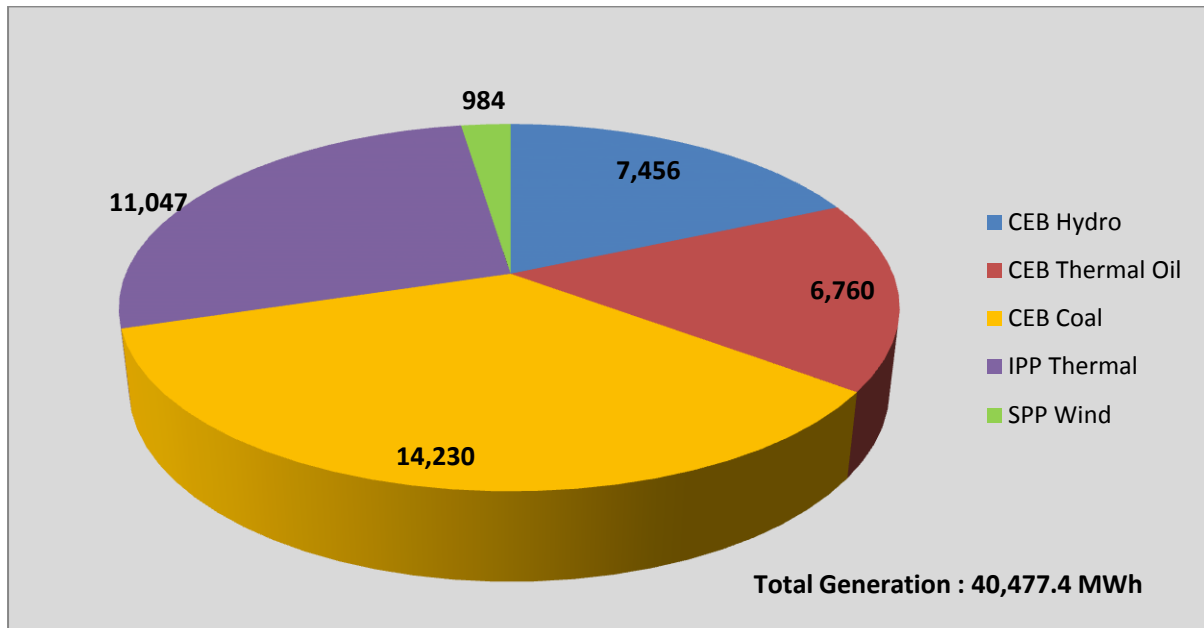
Generation and Reservoirs Statistics

October 04, 2016



PUBLIC UTILITIES COMMISSION OF SRI LANKA

Daily Generation Mix in MWh



Note: Generation from other SPPs (Mini Hydro, Solar and Biomass) is not included

Cumulative Dispatch till October 04, 2016

For Current Month

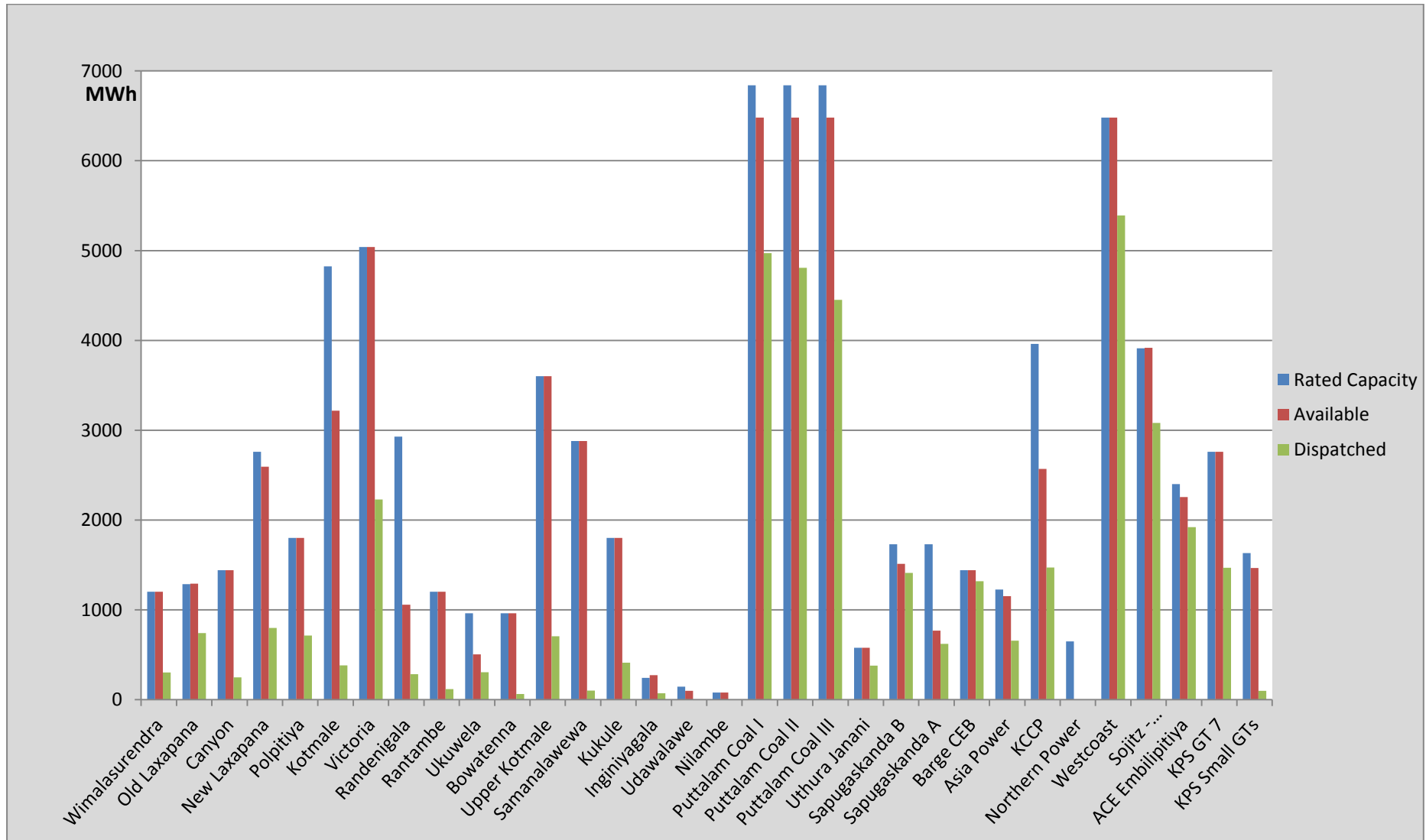
| Category | Dispatch (MWh) | |
|-----------------|------------------|--------|
| CEB Hydro | 24,712.0 | 16.54% |
| CEB Thermal Oil | 23,930.0 | 16.02% |
| CEB Coal | 72,460.0 | 48.51% |
| IPP Thermal | 23,965.0 | 16.04% |
| SPP Wind | 4,303.3 | 2.88% |
| Total | 149,370.3 | |

For Current Year

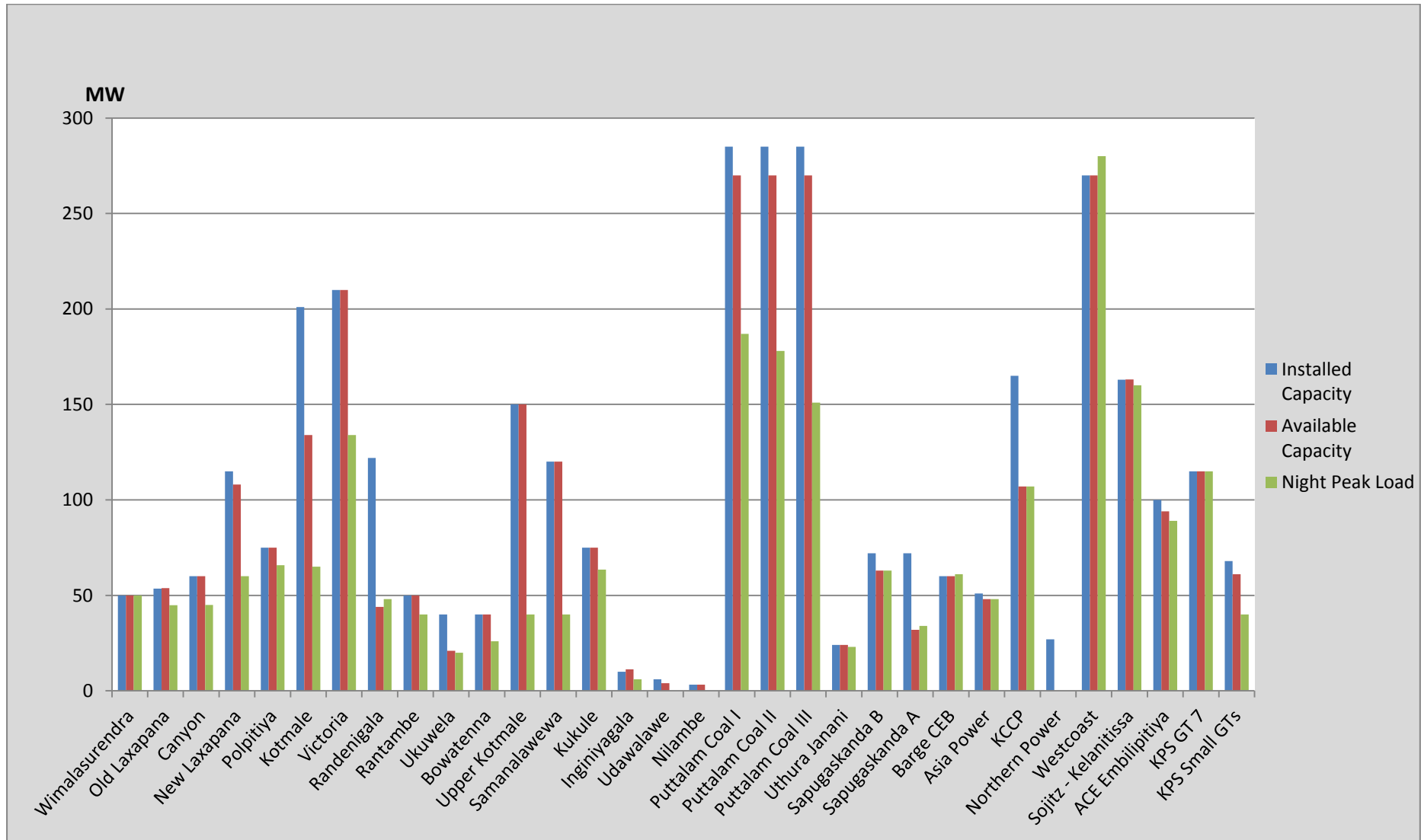
| Category | Dispatch (GWh) | |
|-----------------|----------------|--------|
| CEB Hydro | 2,861 | 26.75% |
| CEB Thermal Oil | 1,578 | 14.76% |
| CEB Coal | 4,000 | 37.40% |
| IPP Thermal | 1,432 | 13.39% |
| Renewable | 823 | 7.70% |
| Total | 10,695 | |

Note: Generation from Mini Hydro, Solar and Biomass power plants during August, September and October is not included in annual cumulative renewable generation figure.

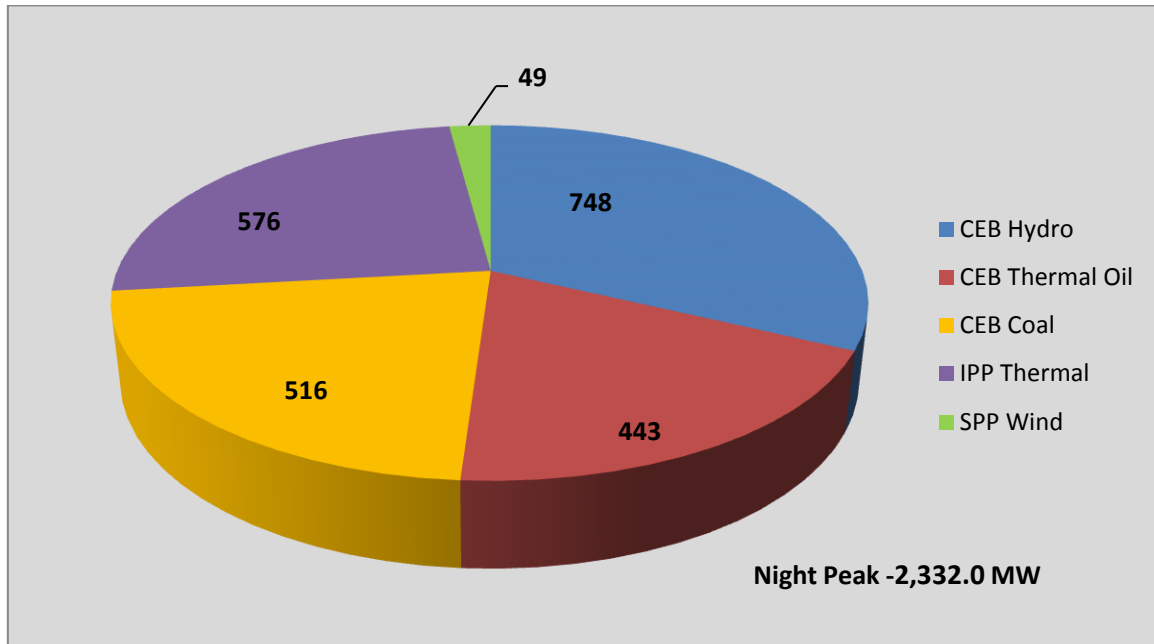
Dispatch on October 04, 2016



Night Peak Contribution on October 04, 2016



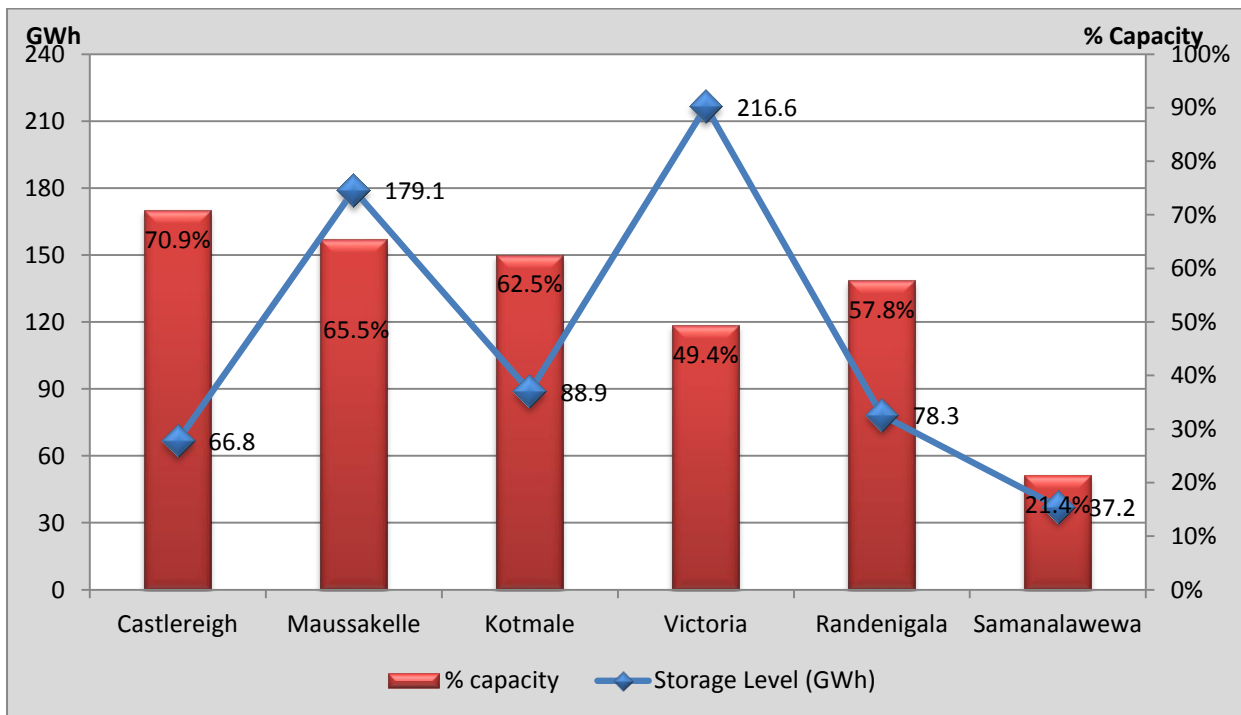
Contribution to the Night Peak in MW



- Day Peak Demand –1,984.1 MW
- Minimum Recorded Demand –1,109.3 MW

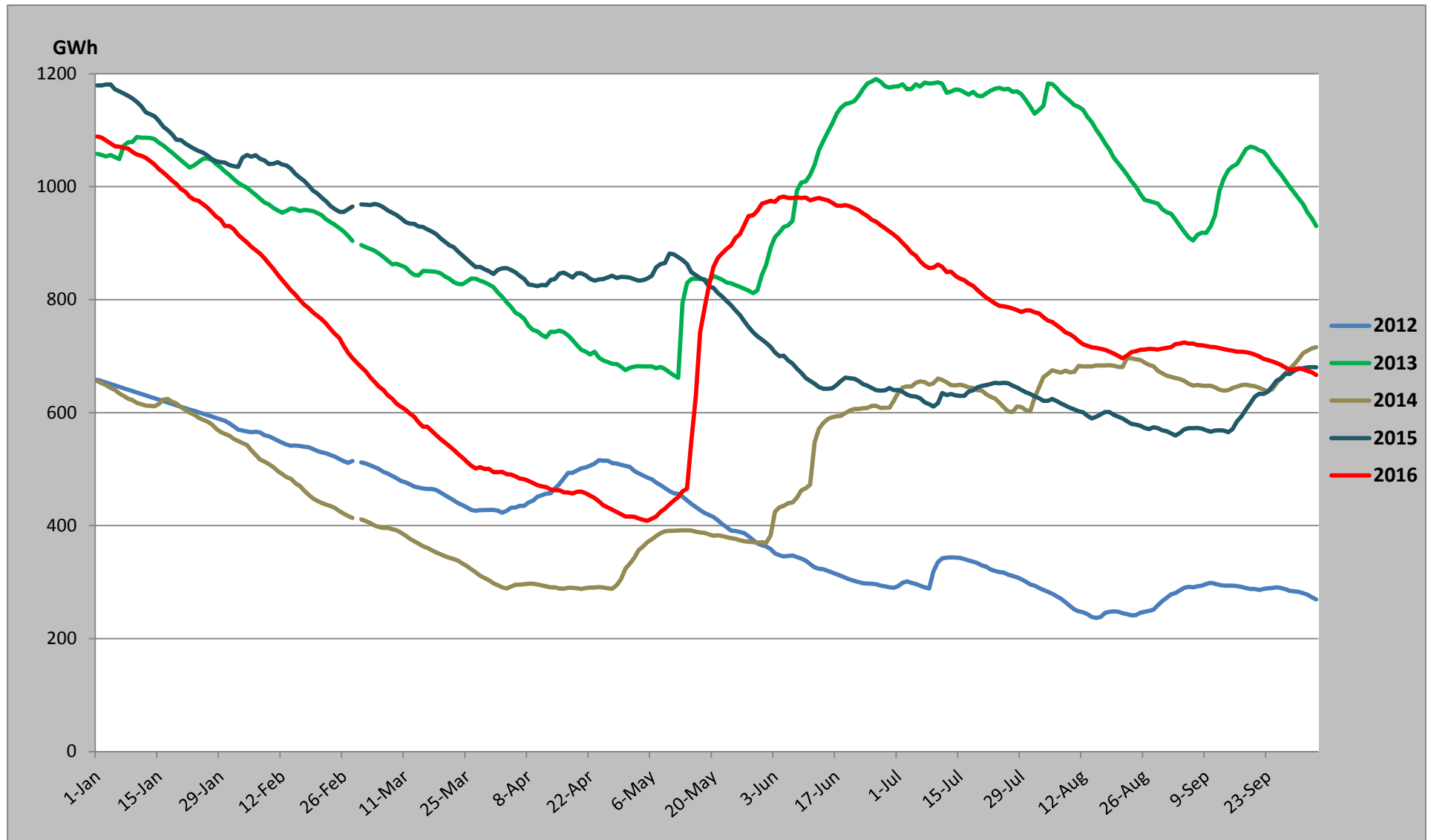
Note: Contribution from other SPPs (Mini Hydro, Solar and Biomass) is not included

Reservoir Storage Levels (as at 06.00 Hr on October 05, 2016)

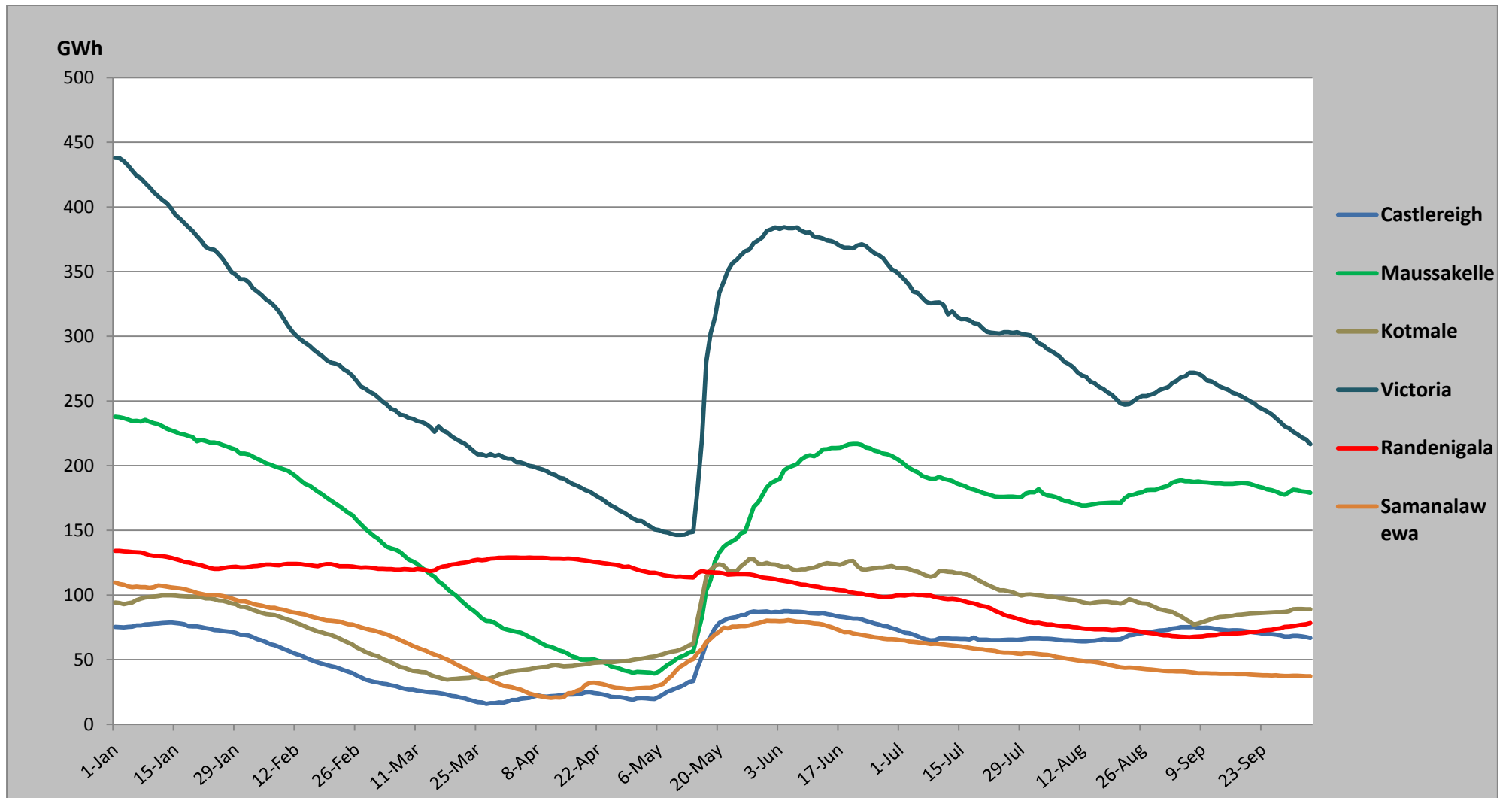


Note: Hydro Reservoir Storage Capacity as at October 05, 2016 – 666.9 GWh (52.99%)

Comparison of Total Reservoir Storage Levels with Past Years

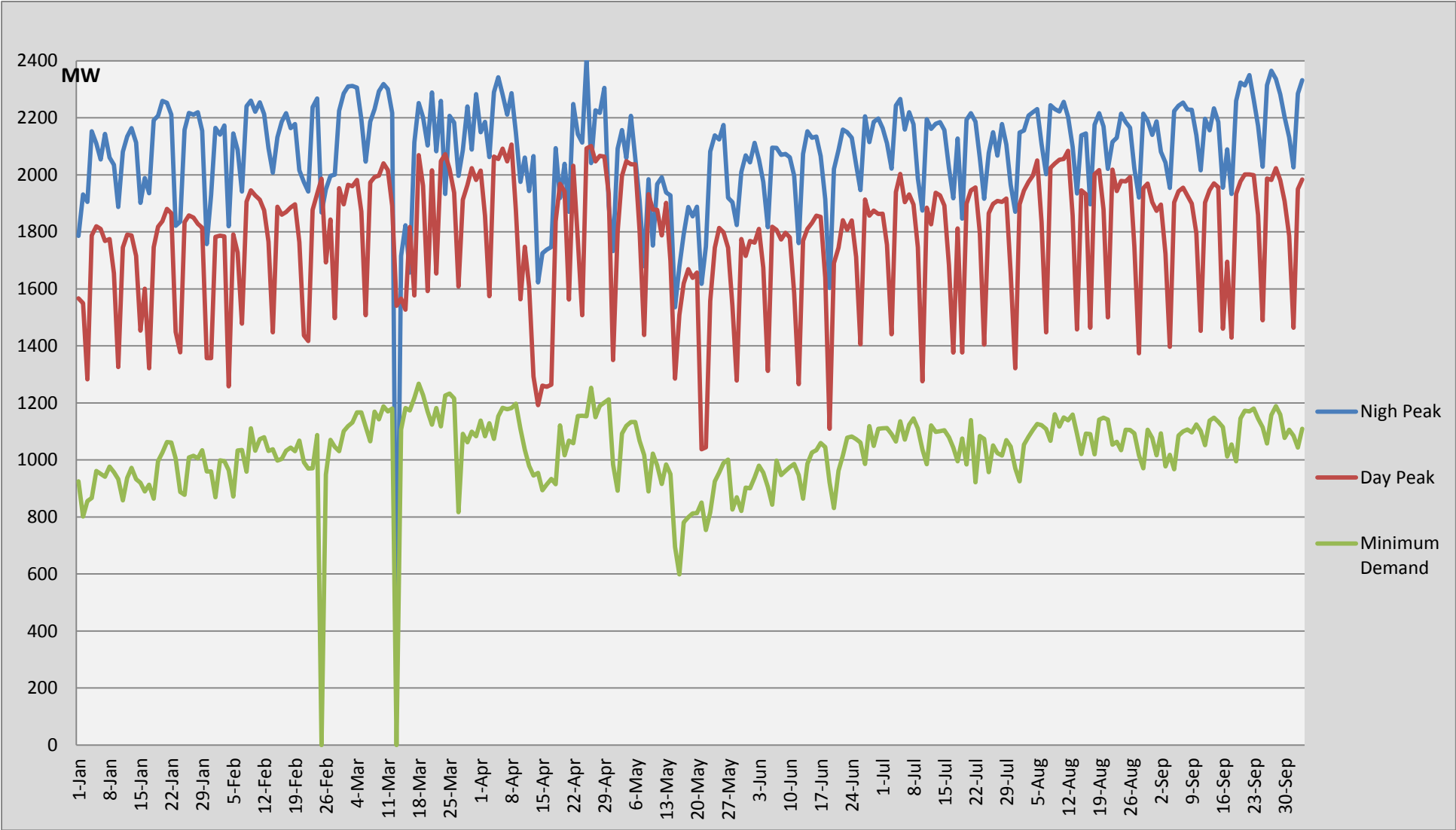


Major Hydro Reservoir Levels in GWh- 2016

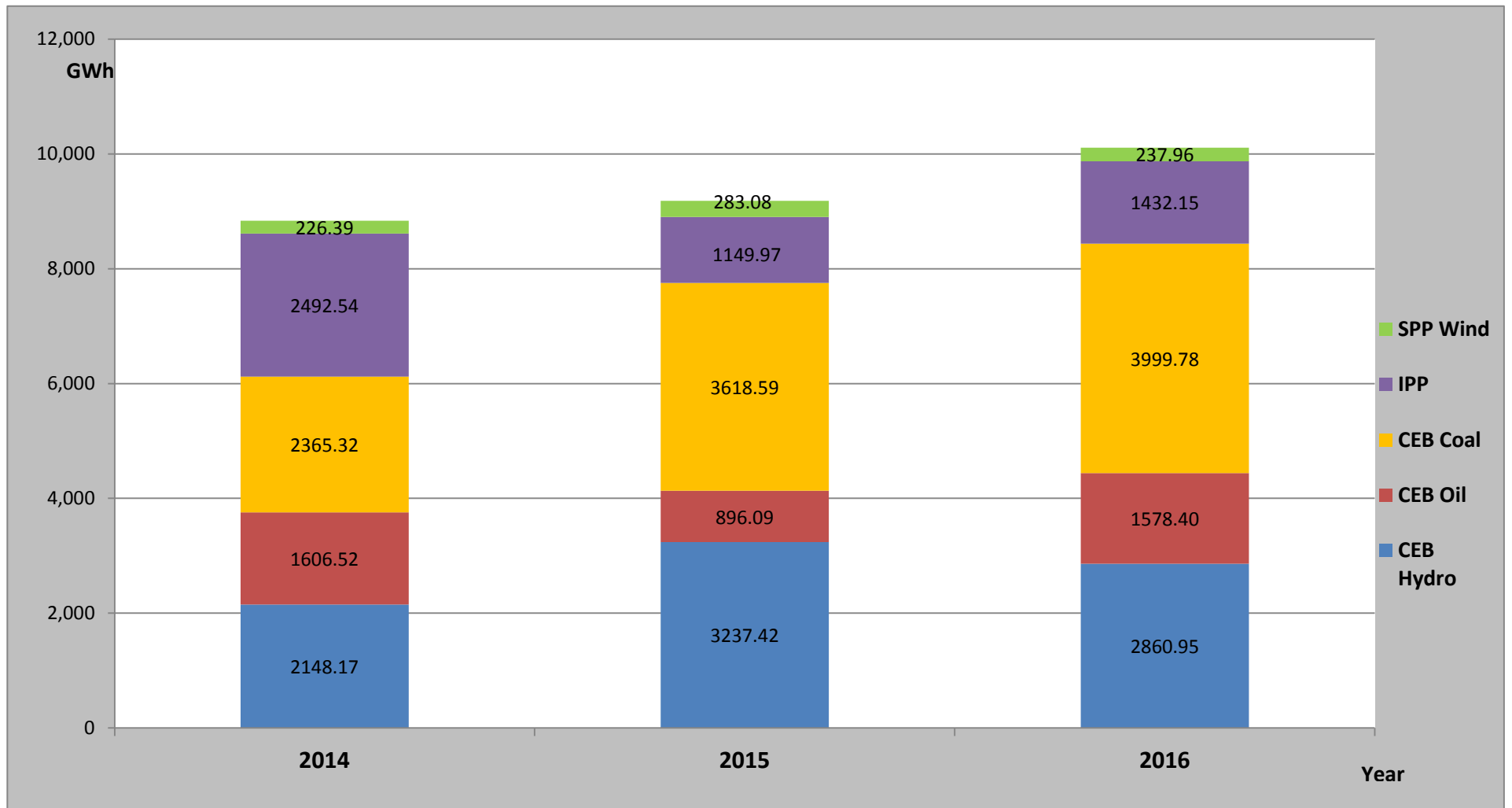


Note: Contribution from Mini Hydro, Solar and Biomass is not included

Demand Variation

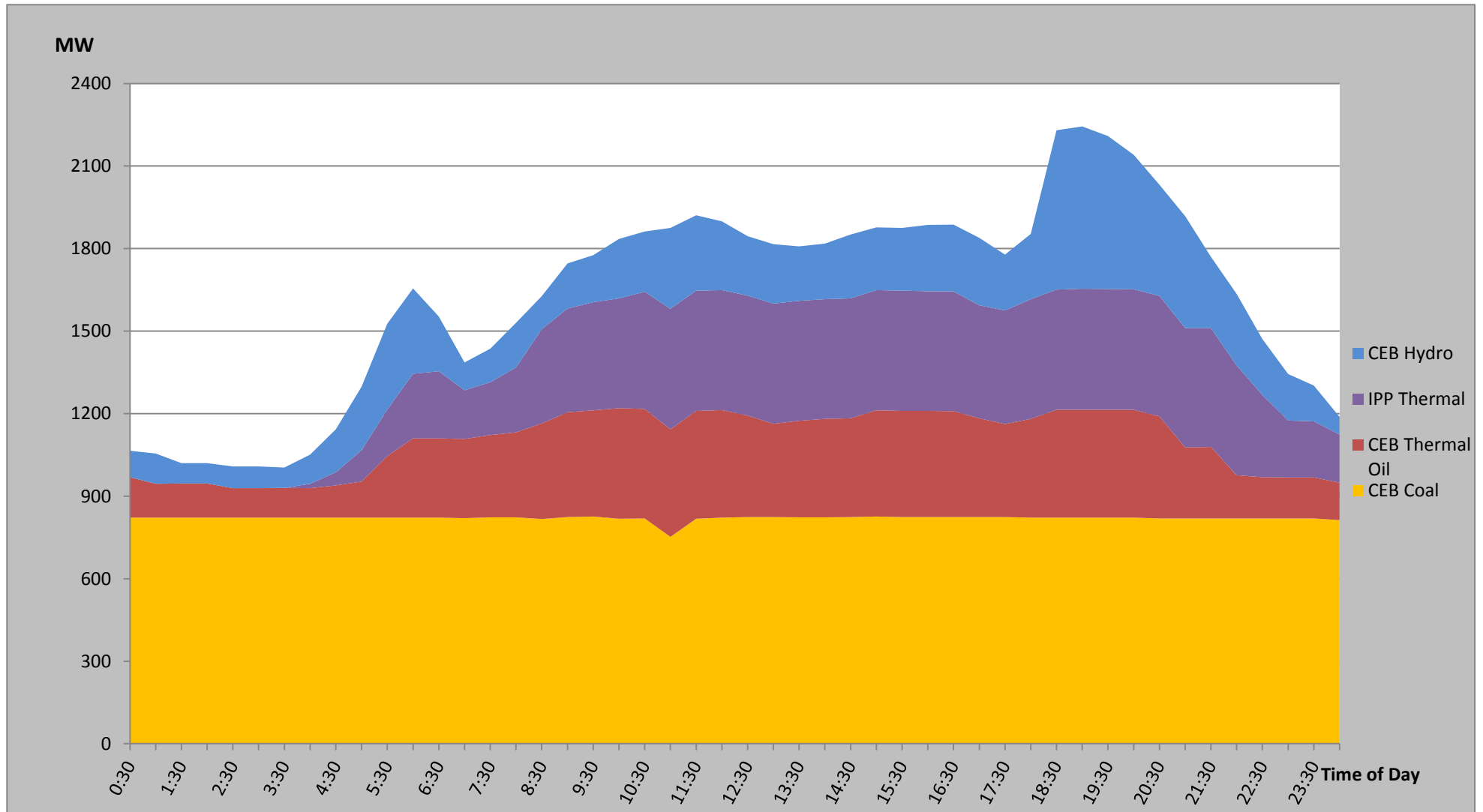


Comparison of Cumulative Dispatch from January 1 to October 04, 2016



Note: Generation from SPP Mini Hydro, Solar and Biomass is not included

Load Curve for October 02, 2016



Note: Excluding NCRE Generation

List of Power Stations

| Power Station | Capacity (MW) | Primary Fuel |
|-------------------------------------|---------------|-------------------------|
| CEB Hydro | | |
| Victoria | 210 | |
| Ukuwela | 40 | |
| Kotmale | 201 | |
| Randenigala | 122 | |
| Rantambe | 49 | |
| Bowatenna | 40 | |
| Nilambe | 3.2 | |
| Upper Kotmale | 150 | |
| Old Laxapana | 50 | |
| New Laxapana | 115 | |
| Polpitiya | 75 | |
| Wimalasurendra | 50 | |
| Canyon | 60 | |
| Samanalawewa | 120 | |
| Kukuleganga | 75 | |
| Inginiyagala | 10 | |
| Udawalawe | 6 | |
| | | |
| CEB Thermal | | |
| Sapugaskanda 1 | 72 | Heavy Fuel |
| Sapugaskanda 2 | 72 | Heavy Fuel |
| Kelanitissa Small Gas Turbines | 68 | Auto Diesel |
| GT 7 - Kelanitissa | 115 | Auto Diesel |
| Kelanitissa CCY | 165 | Naptha & Diesel |
| Lakvijaya (Puttalam Coal) | 285 | Coal |
| Lakvijaya (Puttalam Coal) Stage II | 285 | Coal |
| Lakvijaya (Puttalam Coal) Stage III | 285 | Coal |
| Uthuru Janani | 24 | Heavy Fuel |
| Barge CEB | 60 | Furnace Oil |
| | | |
| Private Thermal (IPPs) | | |
| Asia Power | 51 | Heavy Fuel |
| Sojitz - Kelanitissa | 163 | Auto Diesel |
| West Coast | 270 | Low Sulphur Furnace oil |
| Northern Power | 27 | Auto Diesel |
| ACE Embilipitiya | 100 | Furnace Oil |