

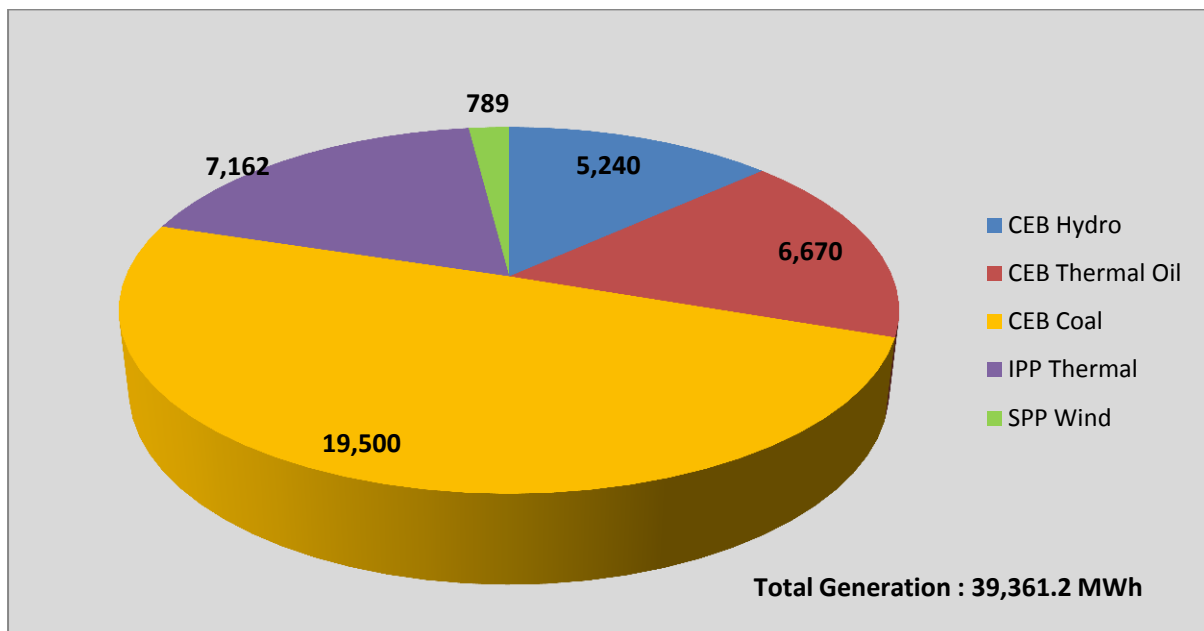
Generation and Reservoirs Statistics

October 03, 2016



PUBLIC UTILITIES COMMISSION OF SRI LANKA

Daily Generation Mix in MWh



Note: Generation from other SPPs (Mini Hydro, Solar and Biomass) is not included

Cumulative Dispatch till October 03, 2016

For Current Month

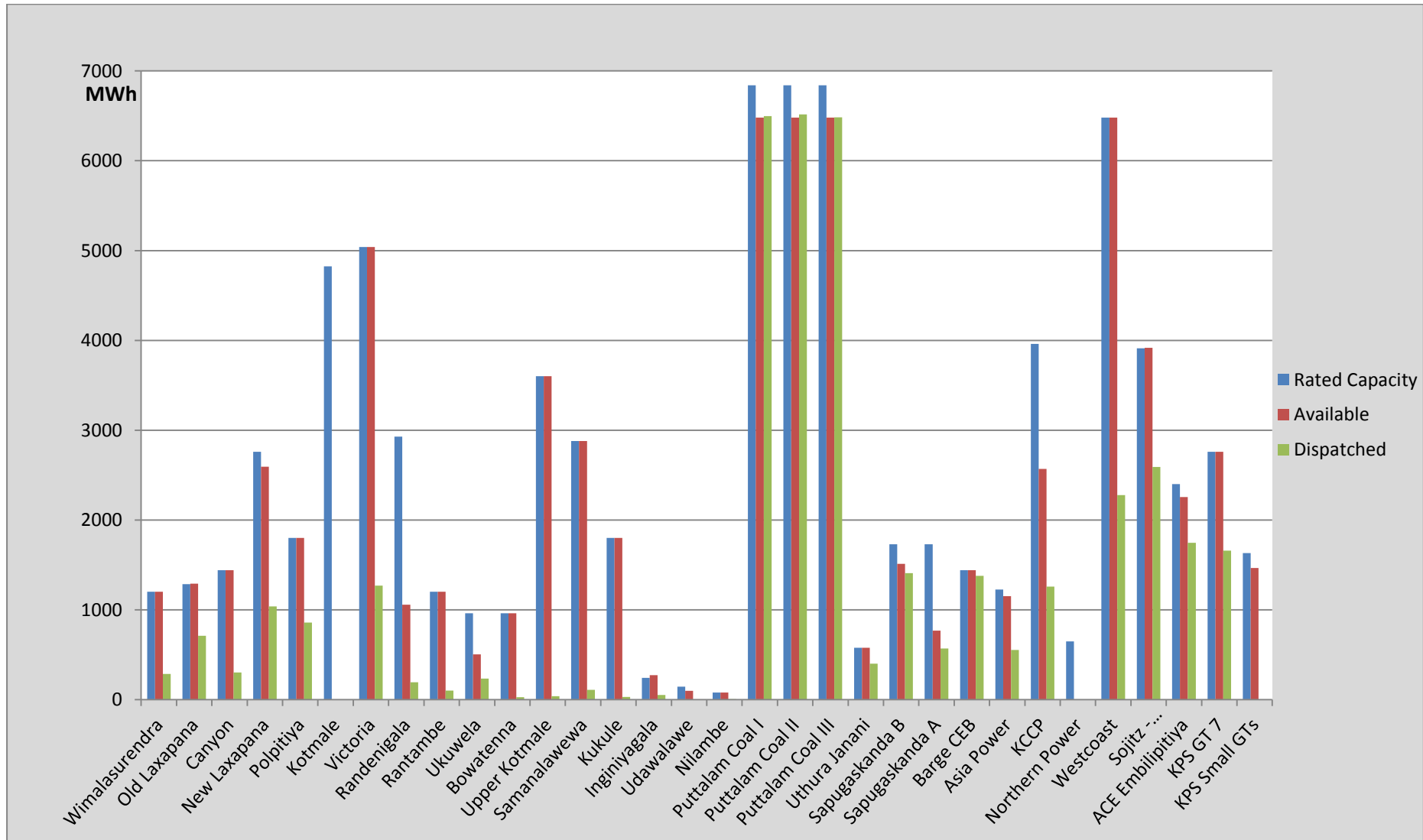
Category	Dispatch (MWh)	
CEB Hydro	17,256.0	15.85%
CEB Thermal Oil	17,170.0	15.77%
CEB Coal	58,230.0	53.47%
IPP Thermal	12,918.0	11.86%
SPP Wind	3,318.9	3.05%
Total	108,892.9	

For Current Year

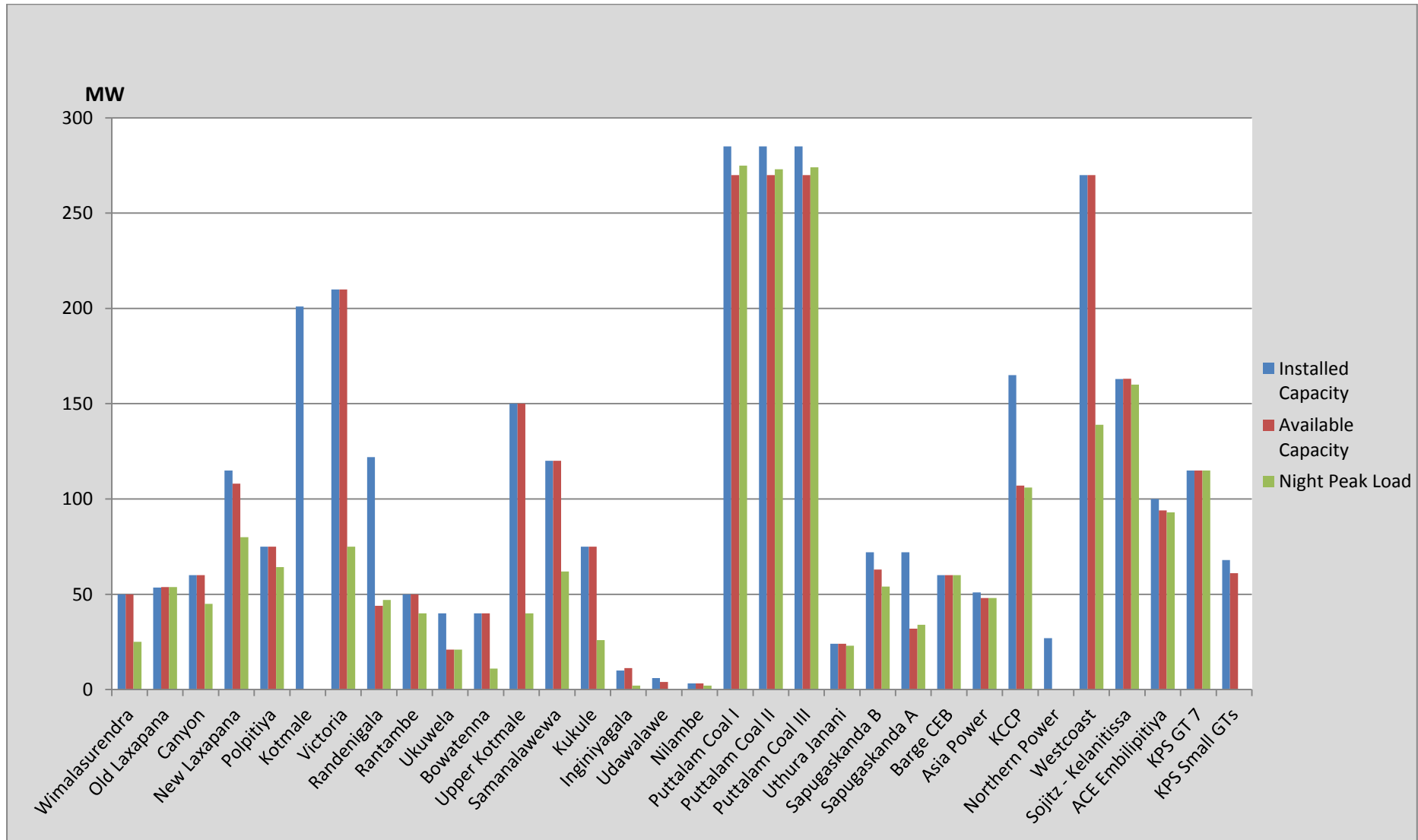
Category	Dispatch (GWh)	
CEB Hydro	2,853	26.78%
CEB Thermal Oil	1,572	14.75%
CEB Coal	3,986	37.41%
IPP Thermal	1,421	13.34%
Renewable	822	7.72%
Total	10,654	

Note: Generation from Mini Hydro, Solar and Biomass power plants during August, September and October is not included in annual cumulative renewable generation figure.

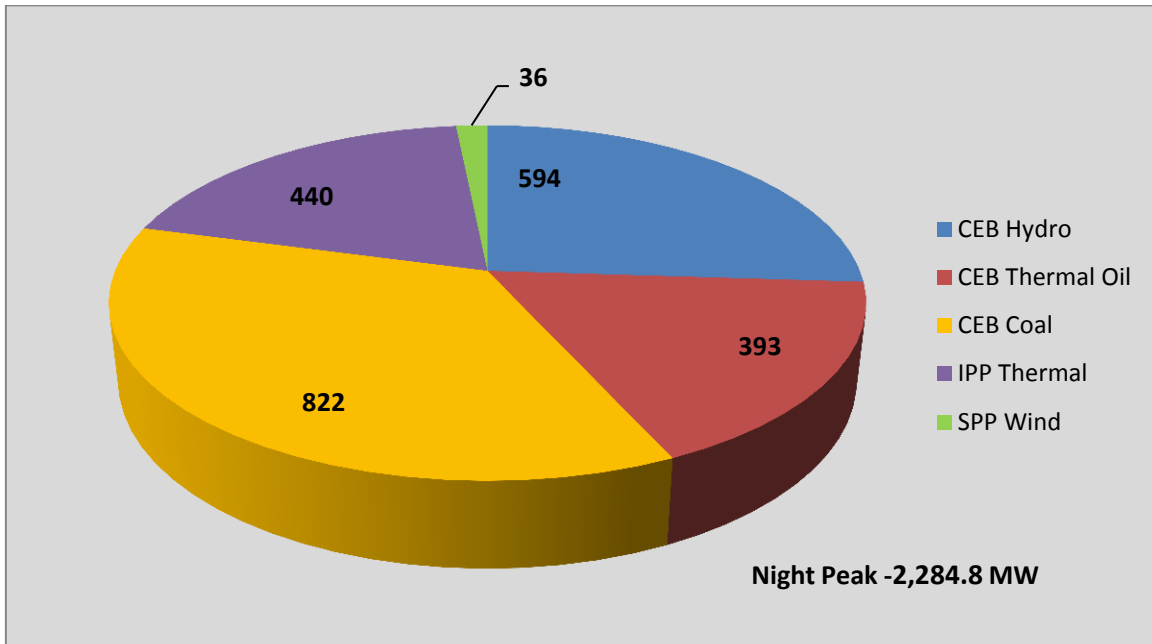
Dispatch on October 03, 2016



Night Peak Contribution on October 03, 2016



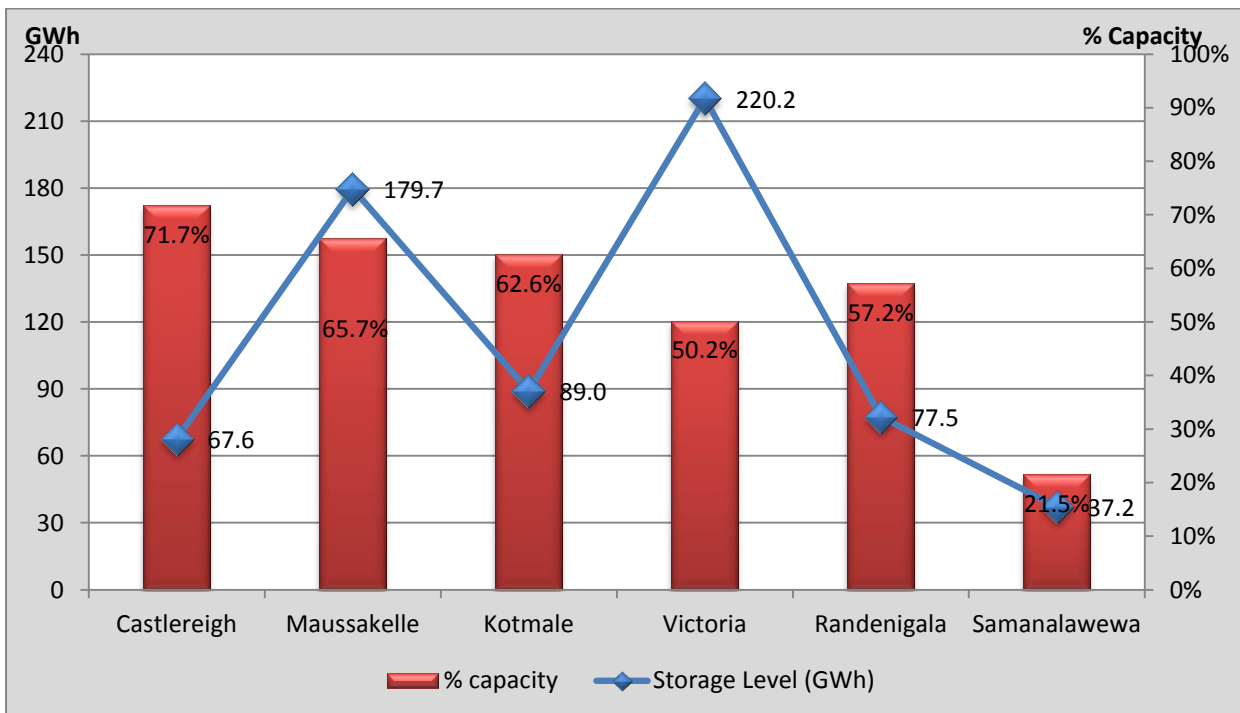
Contribution to the Night Peak in MW



- Day Peak Demand –1,950.1 MW
- Minimum Recorded Demand –1,043.1 MW

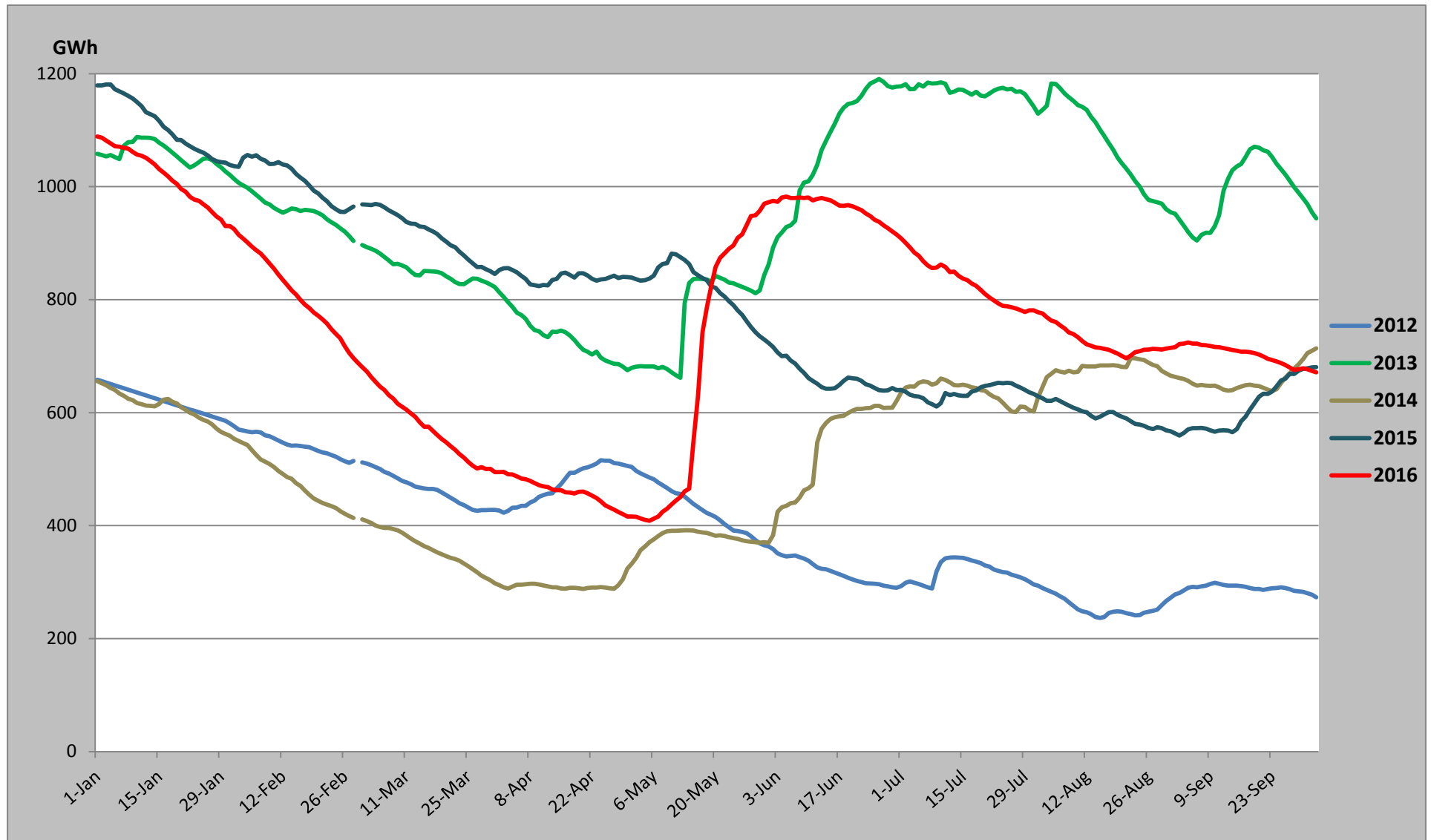
Note: Contribution from other SPPs (Mini Hydro, Solar and Biomass) is not included

Reservoir Storage Levels (as at 06.00 Hr on October 04, 2016)

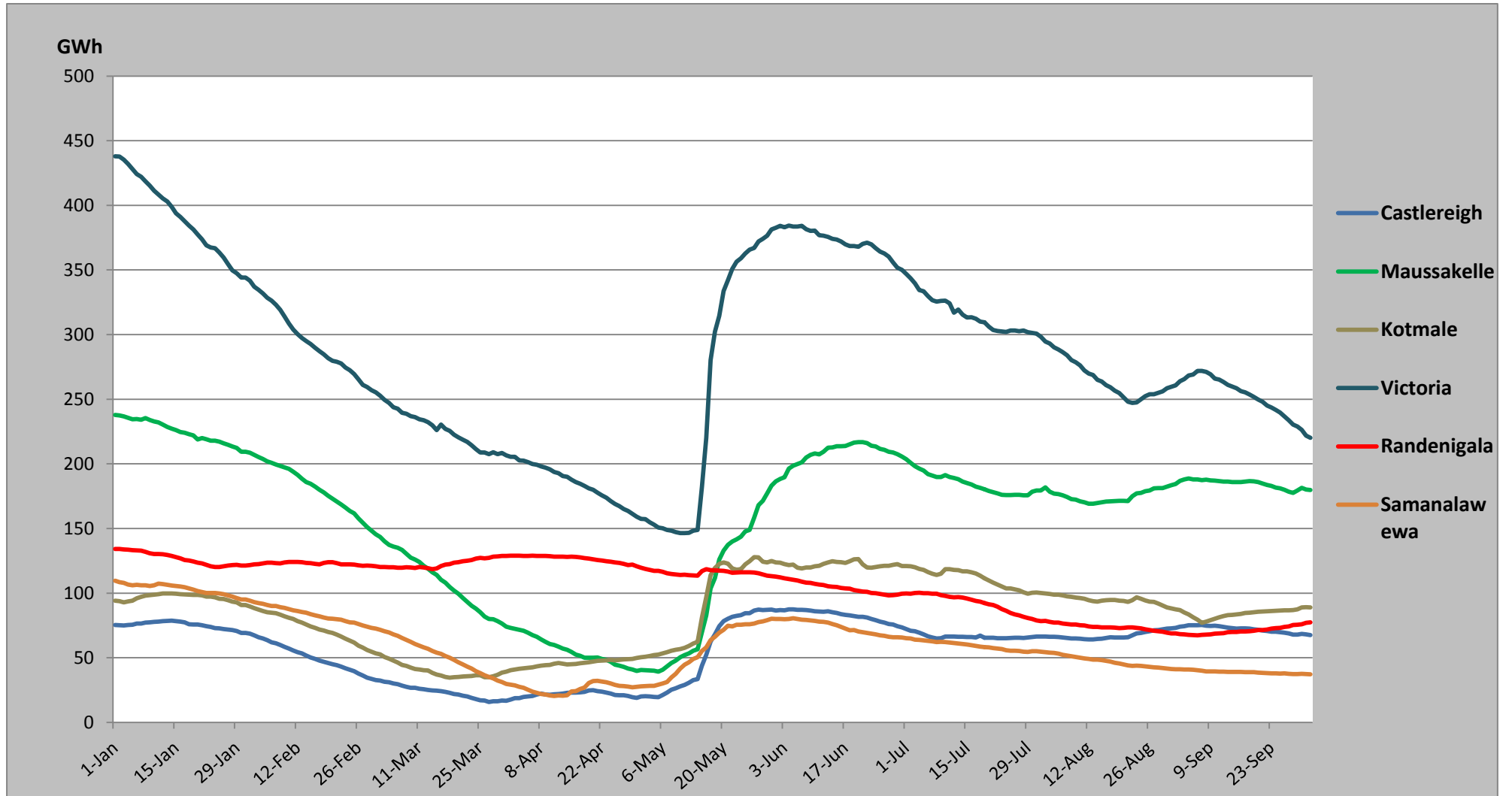


Note: Hydro Reservoir Storage Capacity as at October 04, 2016 – 671.2 GWh (53.33%)

Comparison of Total Reservoir Storage Levels with Past Years

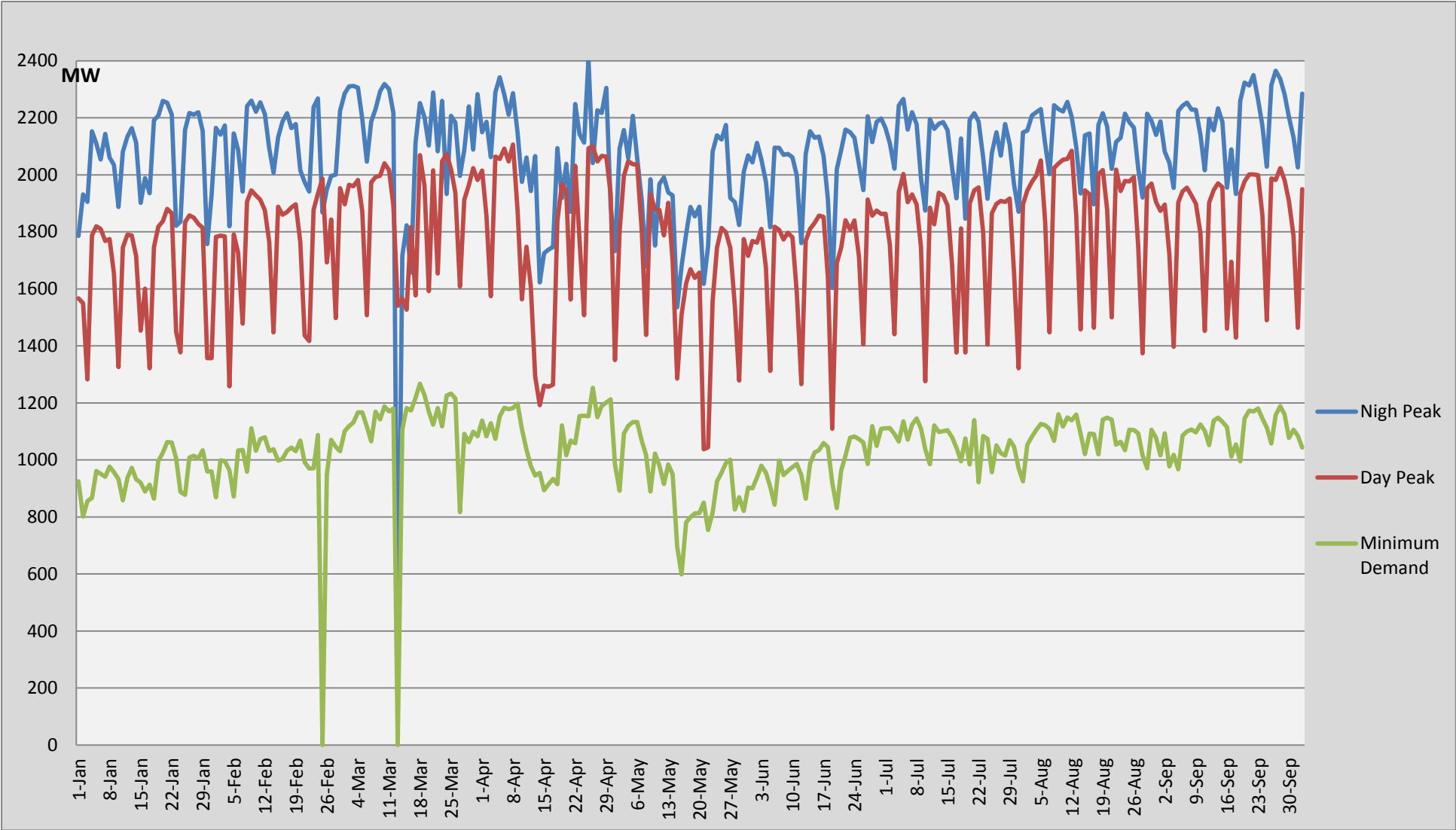


Major Hydro Reservoir Levels in GWh- 2016

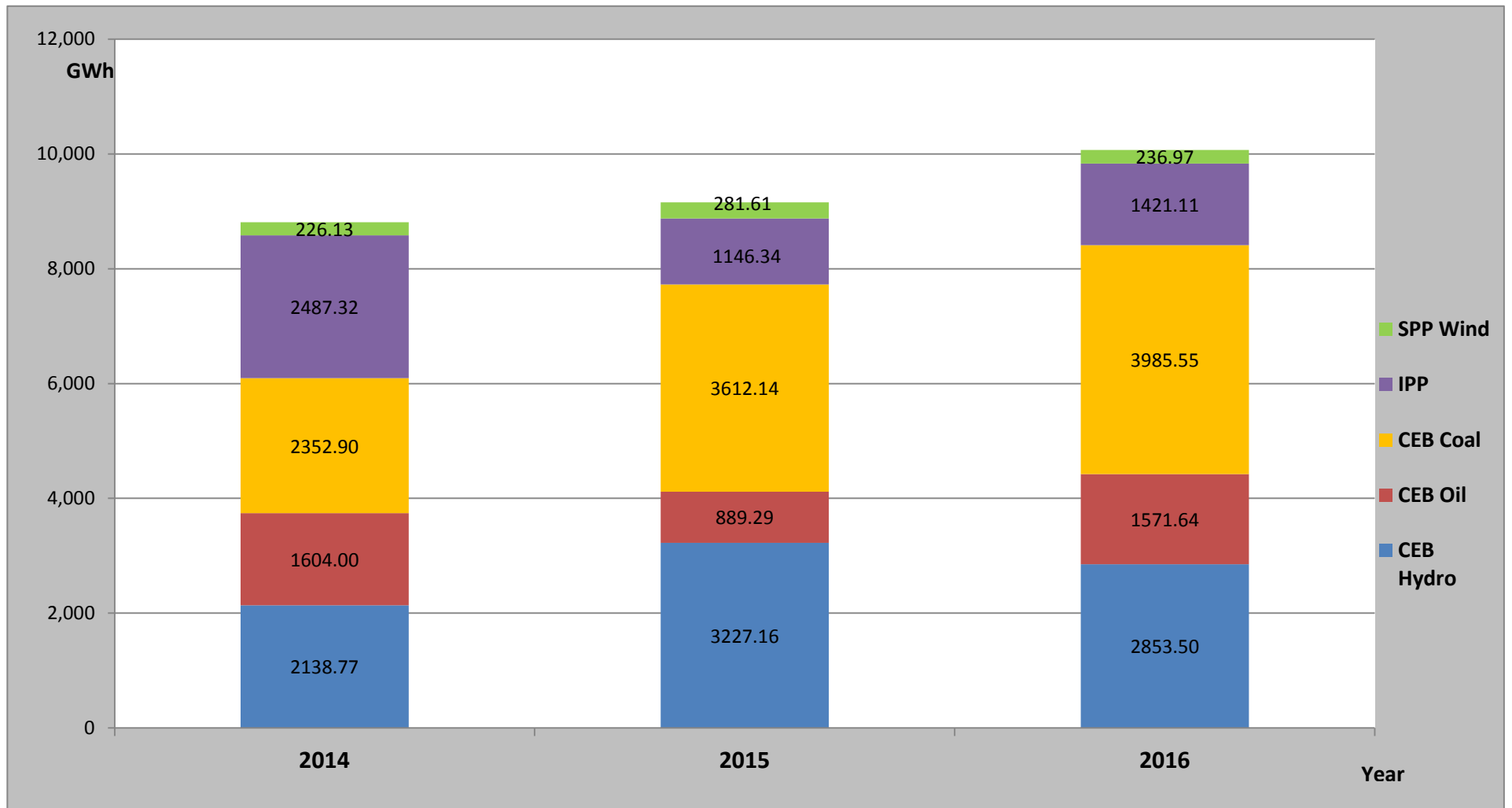


Note: Contribution from Mini Hydro, Solar and Biomass is not included

Demand Variation

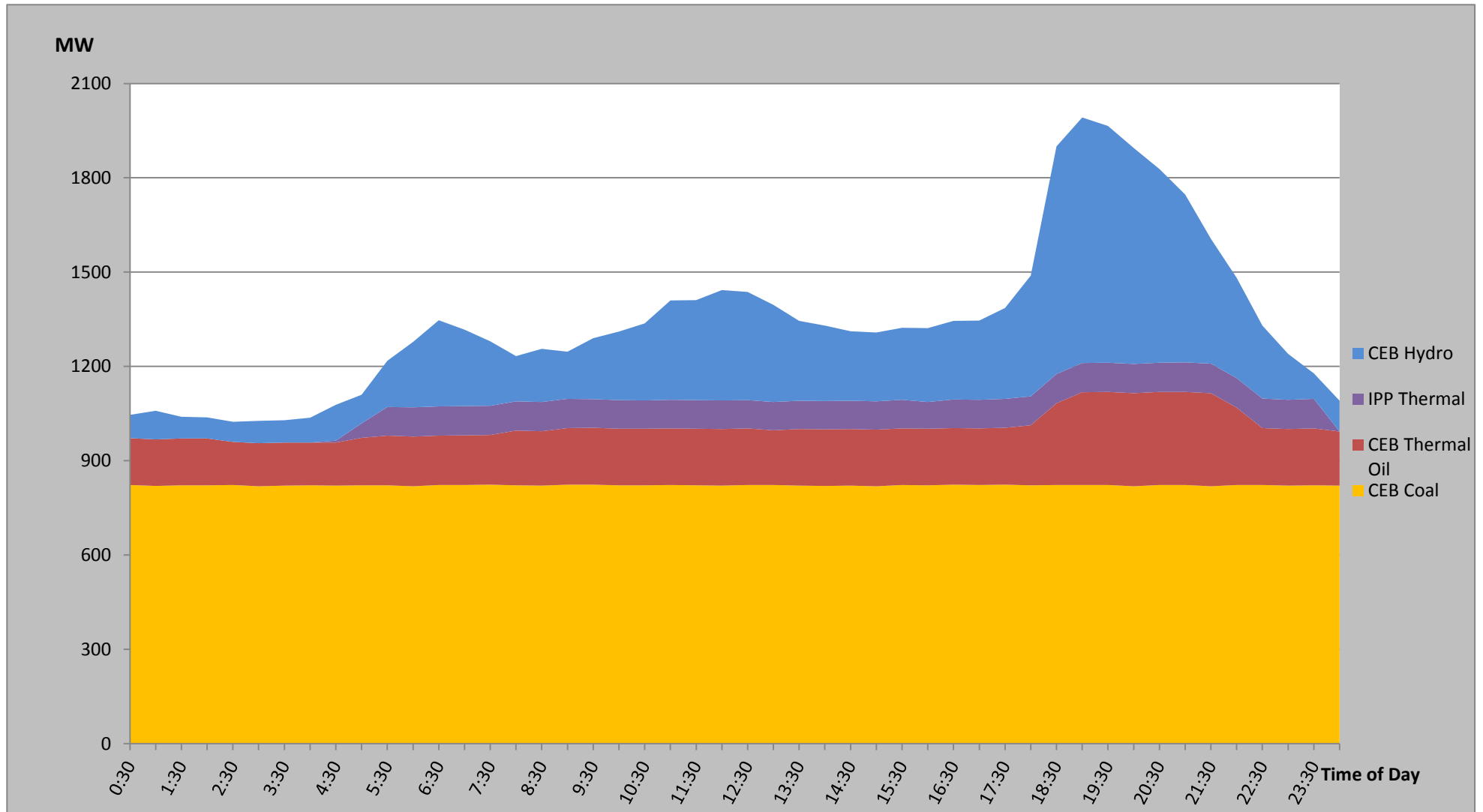


Comparison of Cumulative Dispatch from January 1 to October 03, 2016



Note: Generation from SPP Mini Hydro, Solar and Biomass is not included

Load Curve for October 02, 2016



Note: Excluding NCRE Generation

List of Power Stations

Power Station	Capacity (MW)	Primary Fuel
CEB Hydro		
Victoria	210	
Ukuwela	40	
Kotmale	201	
Randenigala	122	
Rantambe	49	
Bowatenna	40	
Nilambe	3.2	
Upper Kotmale	150	
Old Laxapana	50	
New Laxapana	115	
Polpitiya	75	
Wimalasurendra	50	
Canyon	60	
Samanalawewa	120	
Kukuleganga	75	
Inginiyagala	10	
Udawalawe	6	
CEB Thermal		
Sapugaskanda 1	72	Heavy Fuel
Sapugaskanda 2	72	Heavy Fuel
Kelanitissa Small Gas Turbines	68	Auto Diesel
GT 7 - Kelanitissa	115	Auto Diesel
Kelanitissa CCY	165	Naptha & Diesel
Lakvijaya (Puttalam Coal)	285	Coal
Lakvijaya (Puttalam Coal) Stage II	285	Coal
Lakvijaya (Puttalam Coal) Stage III	285	Coal
Uthuru Janani	24	Heavy Fuel
Barge CEB	60	Furnace Oil
Private Thermal (IPPs)		
Asia Power	51	Heavy Fuel
Sojitz - Kelanitissa	163	Auto Diesel
West Coast	270	Low Sulphur Furnace oil
Northern Power	27	Auto Diesel
ACE Embilipitiya	100	Furnace Oil