

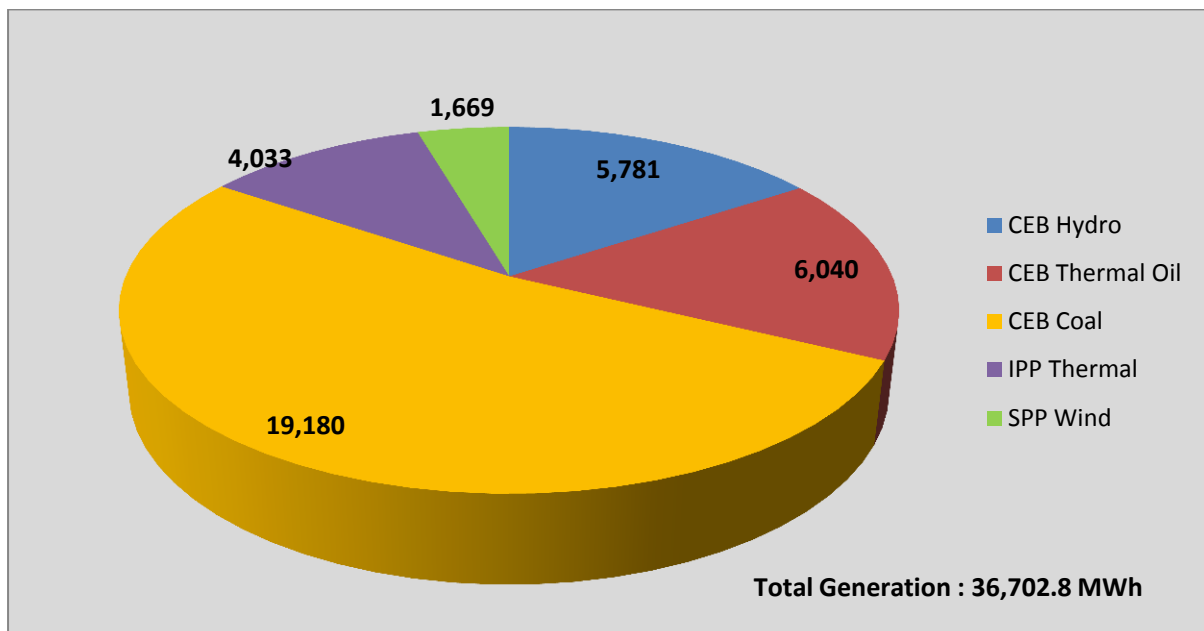
# Generation and Reservoirs Statistics

October 01, 2016



PUBLIC UTILITIES COMMISSION OF SRI LANKA

## Daily Generation Mix in MWh



**Note:** Generation from other SPPs (Mini Hydro, Solar and Biomass) is not included

## Cumulative Dispatch till October 01, 2016

### For Current Month

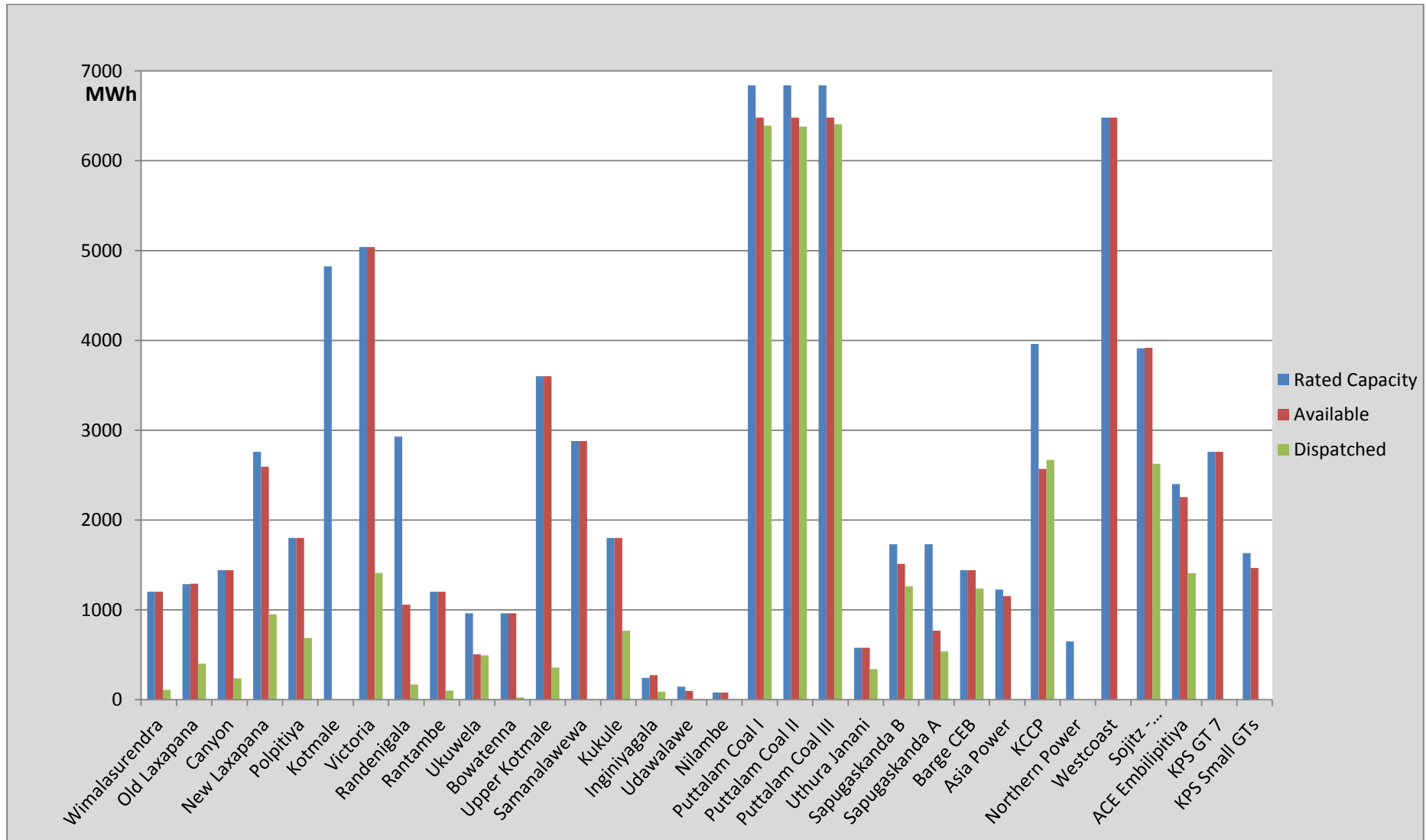
Category	Dispatch (MWh)	
CEB Hydro	5,781.0	15.75%
CEB Thermal Oil	6,040.0	16.46%
CEB Coal	19,180.0	52.26%
IPP Thermal	4,033.0	10.99%
SPP Wind	1,668.8	4.55%
<b>Total</b>	<b>36,702.8</b>	

### For Current Year

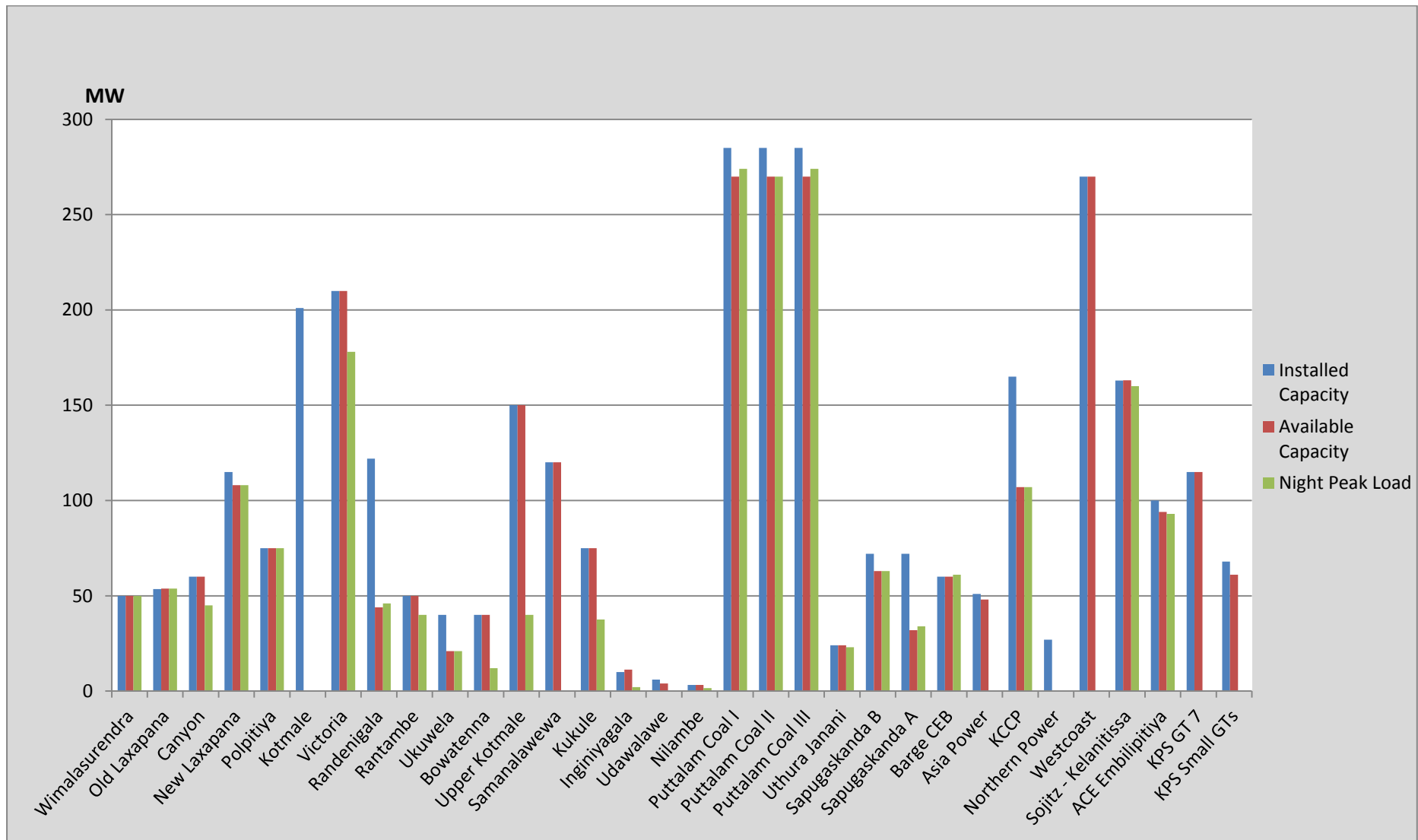
Category	Dispatch (GWh)	
CEB Hydro	2,842	26.86%
CEB Thermal Oil	1,561	14.75%
CEB Coal	3,947	37.29%
IPP Thermal	1,412	13.35%
Renewable	821	7.76%
<b>Total</b>	<b>10,582</b>	

**Note:** Generation from Mini Hydro, Solar and Biomass power plants during August, September and October is not included in annual cumulative renewable generation figure.

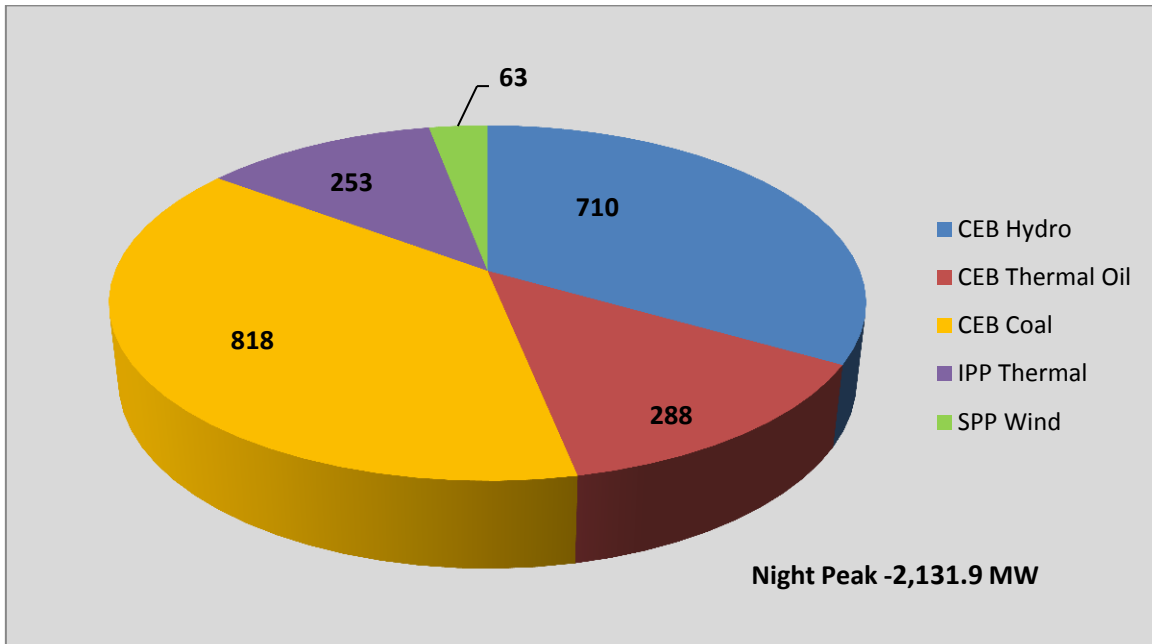
## Dispatch on October 01, 2016



## Night Peak Contribution on October 01, 2016



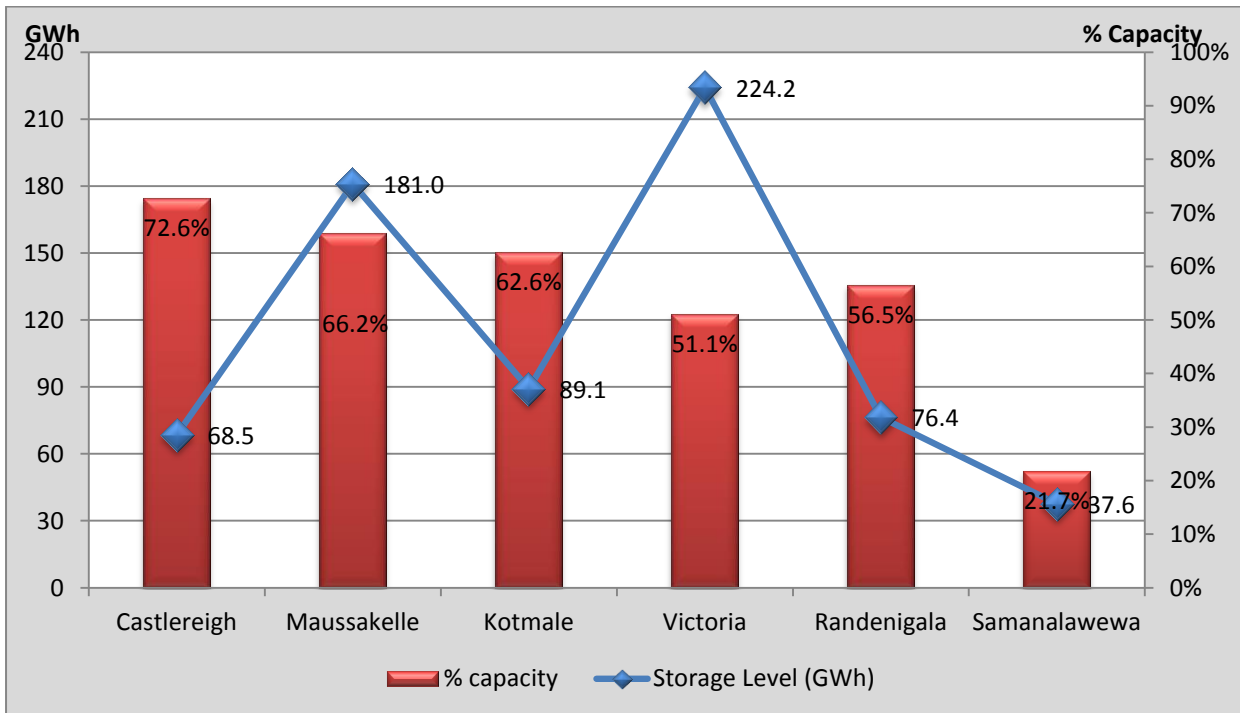
## Contribution to the Night Peak in MW



- Day Peak Demand –1,785.7 MW
- Minimum Recorded Demand –1,106.3 MW

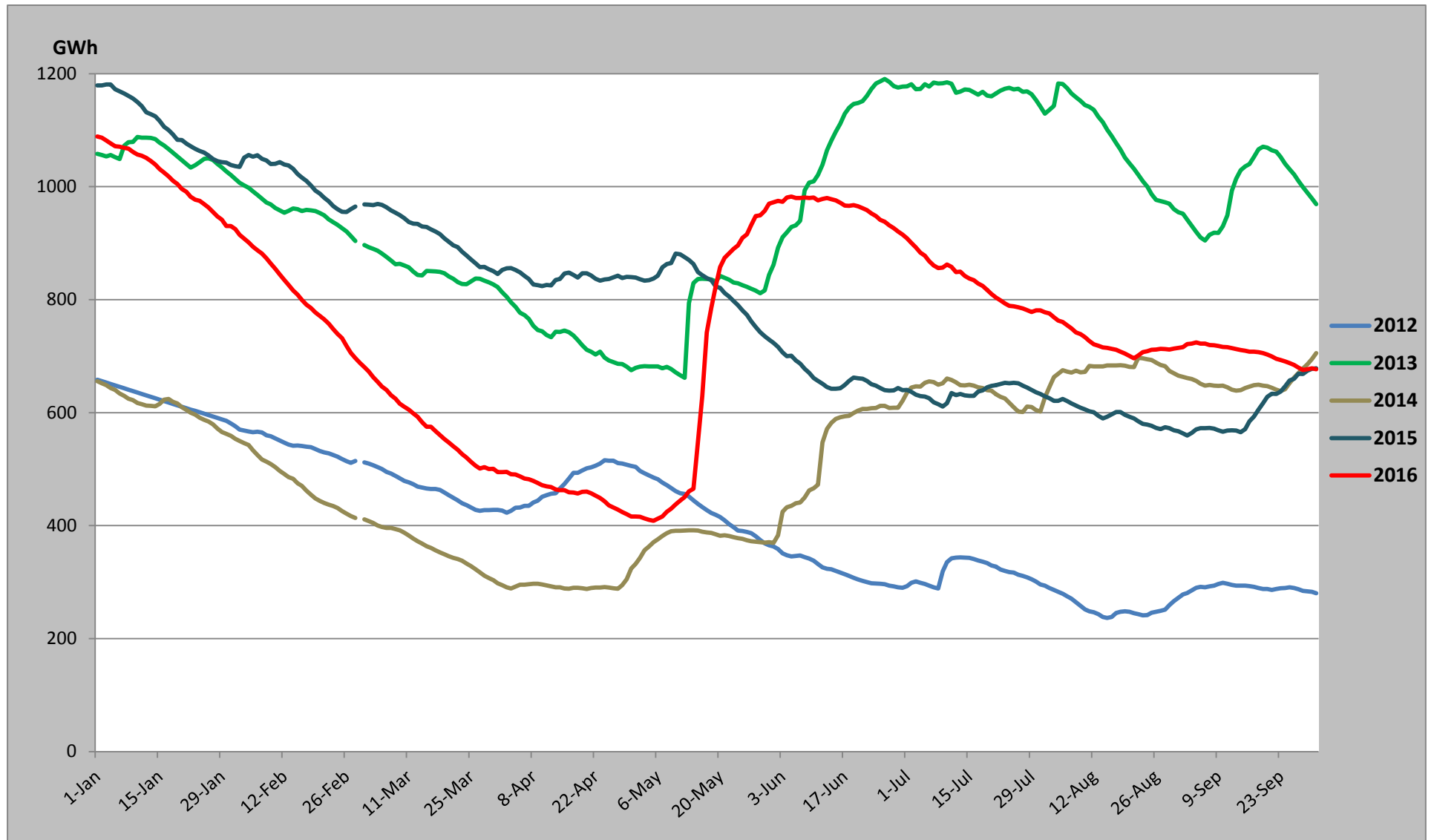
*Note: Contribution from other SPPs (Mini Hydro, Solar and Biomass) is not included*

## Reservoir Storage Levels (as at 06.00 Hr on October 02, 2016)

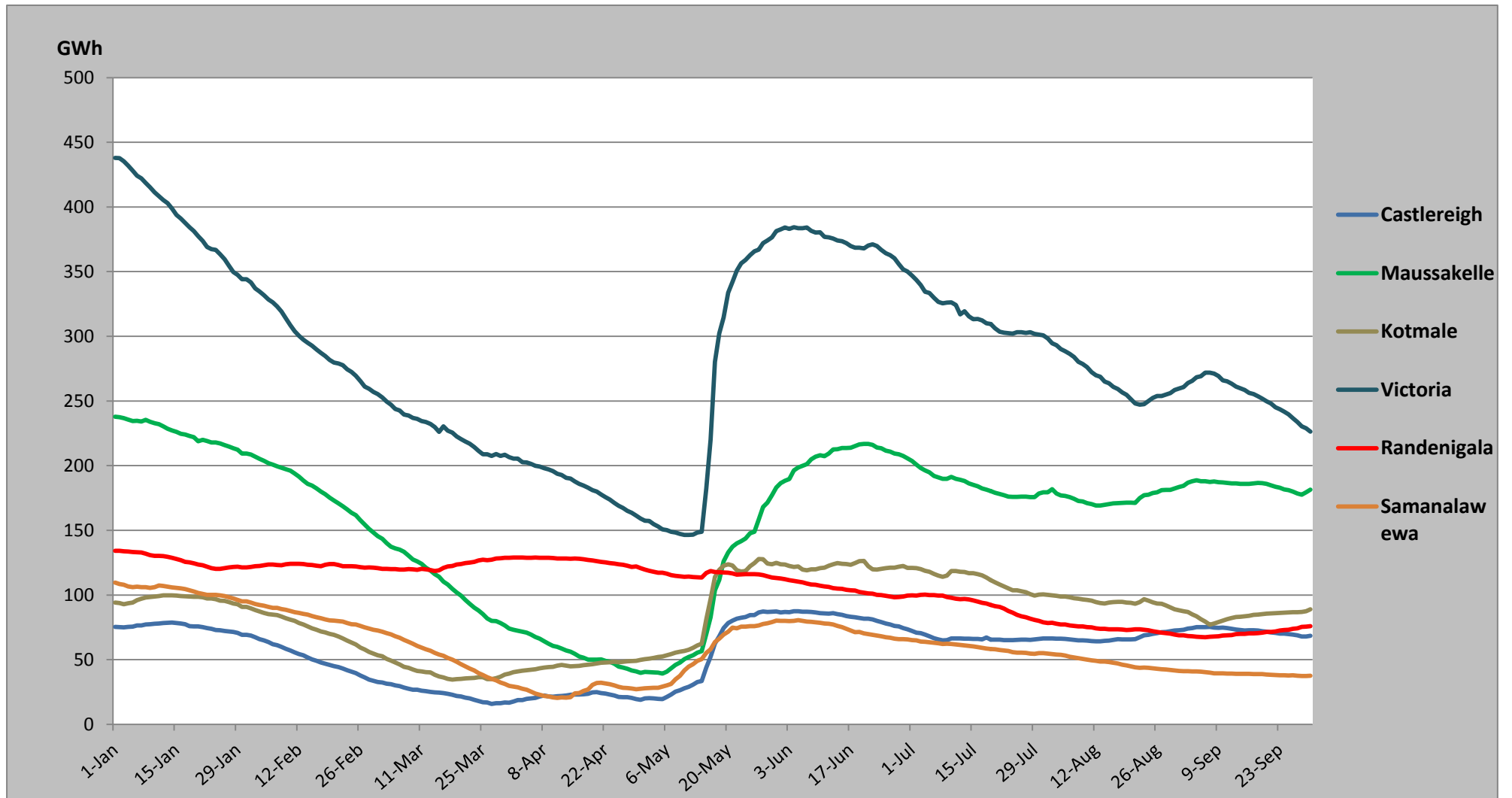


*Note: Hydro Reservoir Storage Capacity as at October 02, 2016 – 676.8 GWh (53.77 %)*

## Comparison of Total Reservoir Storage Levels with Past Years

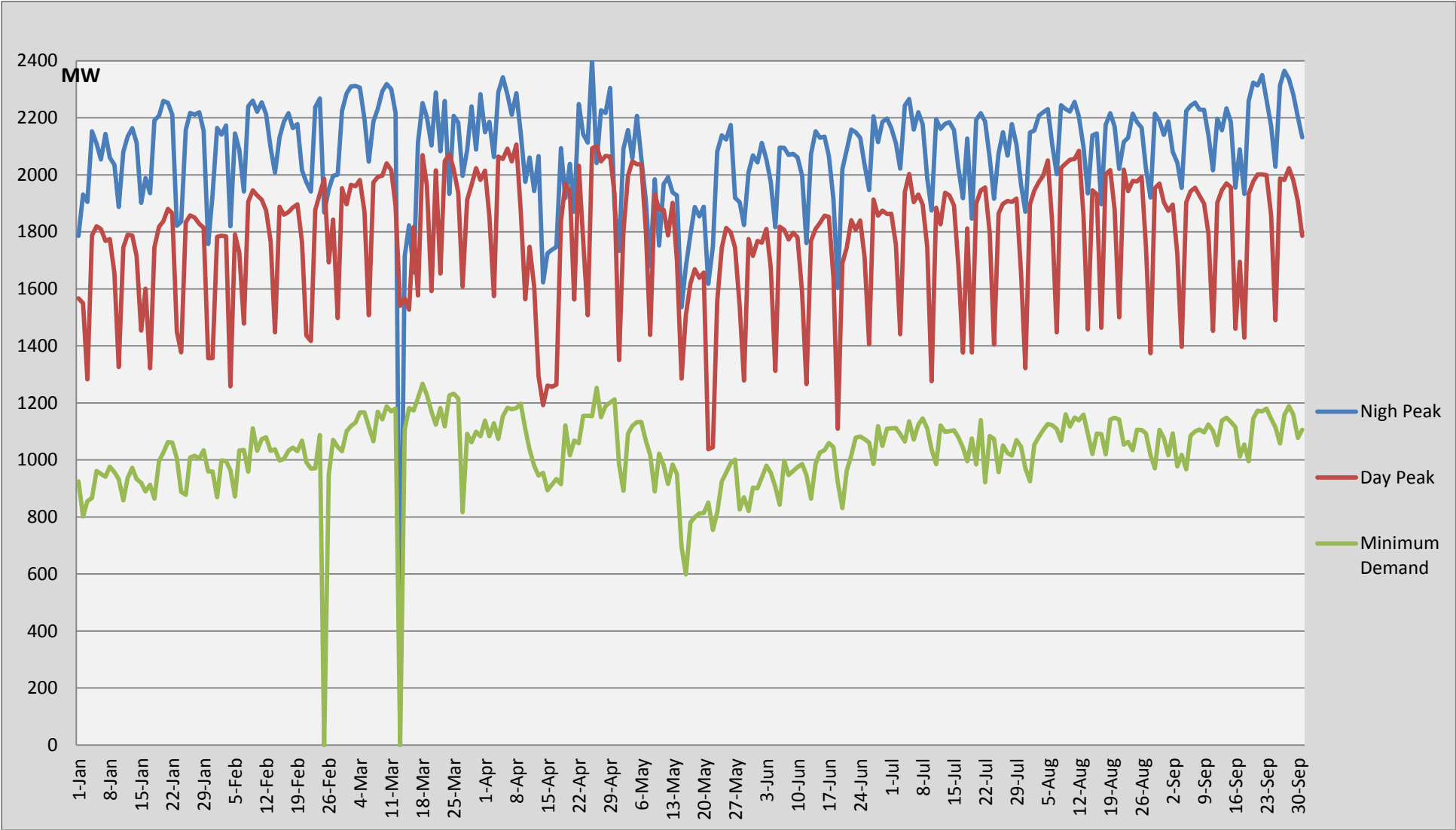


## Major Hydro Reservoir Levels in GWh- 2016



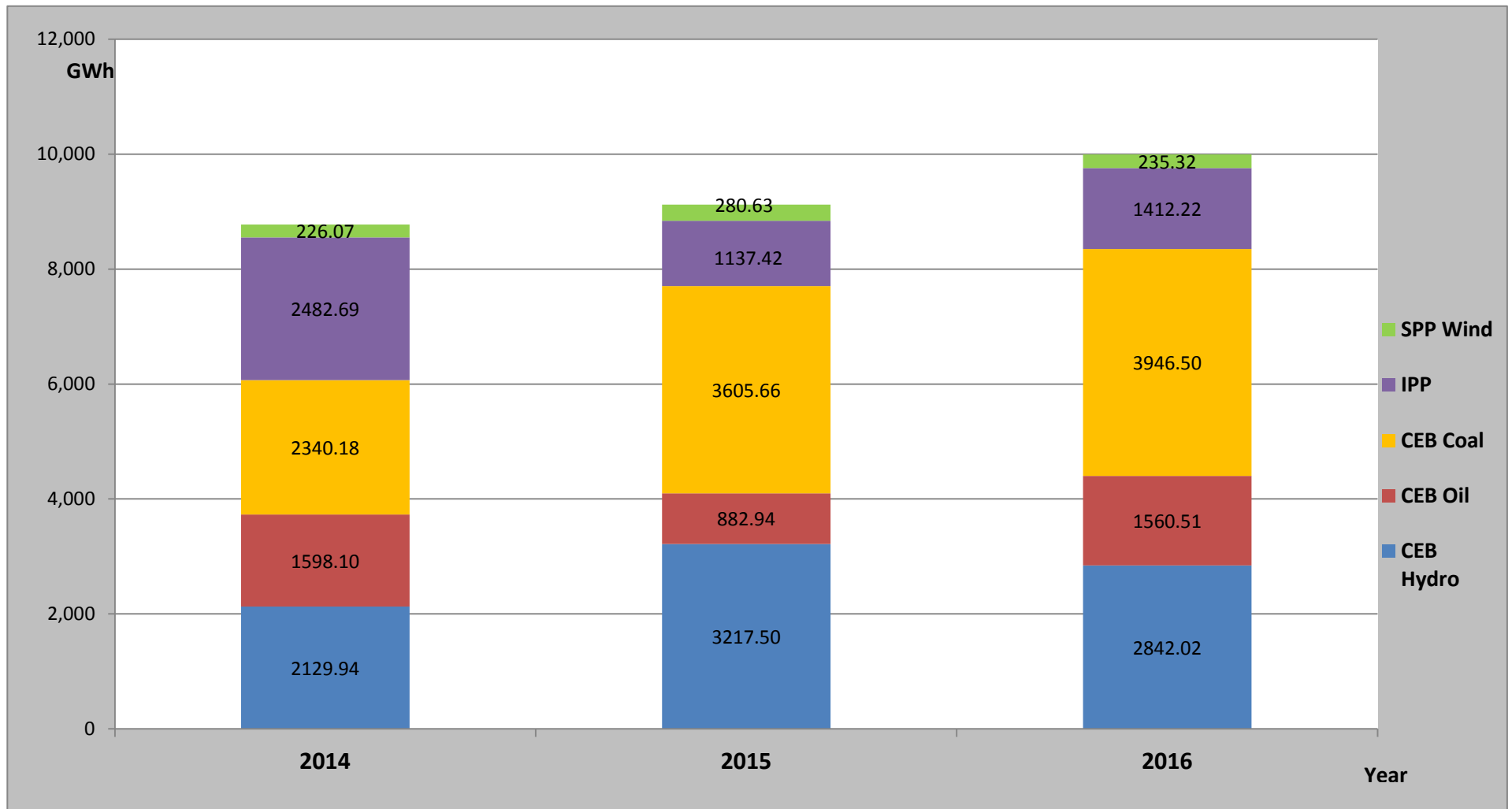
**Note:** Contribution from Mini Hydro, Solar and Biomass is not included

# Demand Variation



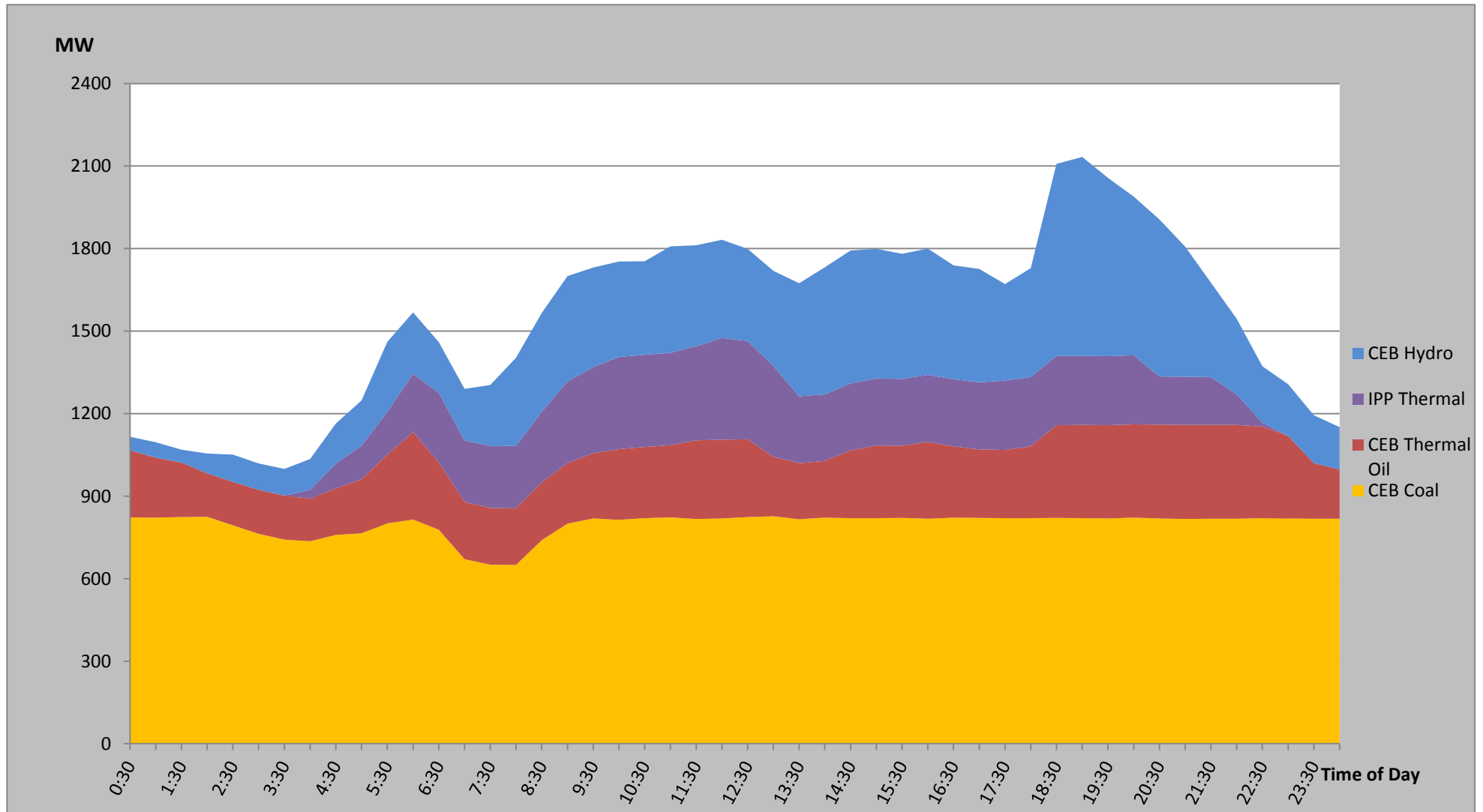


## Comparison of Cumulative Dispatch from January 1 to October 01, 2016



**Note:** Generation from SPP Mini Hydro, Solar and Biomass is not included

## Load Curve for September 30, 2016



**Note:** Excluding NCRE Generation

## List of Power Stations

Power Station	Capacity (MW)	Primary Fuel
<b>CEB Hydro</b>		
Victoria	210	
Ukuwela	40	
Kotmale	201	
Randenigala	122	
Rantambe	49	
Bowatenna	40	
Nilambe	3.2	
Upper Kotmale	150	
Old Laxapana	50	
New Laxapana	115	
Polpitiya	75	
Wimalasurendra	50	
Canyon	60	
Samanalawewa	120	
Kukuleganga	75	
Inginiyagala	10	
Udawalawe	6	
<b>CEB Thermal</b>		
Sapugaskanda 1	72	Heavy Fuel
Sapugaskanda 2	72	Heavy Fuel
Kelanitissa Small Gas Turbines	68	Auto Diesel
GT 7 - Kelanitissa	115	Auto Diesel
Kelanitissa CCY	165	Naptha & Diesel
Lakvijaya (Puttalam Coal)	285	Coal
Lakvijaya (Puttalam Coal) Stage II	285	Coal
Lakvijaya (Puttalam Coal) Stage III	285	Coal
Uthuru Janani	24	Heavy Fuel
Barge CEB	60	Furnace Oil
<b>Private Thermal (IPPs)</b>		
Asia Power	51	Heavy Fuel
Sojitz - Kelanitissa	163	Auto Diesel
West Coast	270	Low Sulphur Furnace oil
Northern Power	27	Auto Diesel
ACE Embilipitiya	100	Furnace Oil