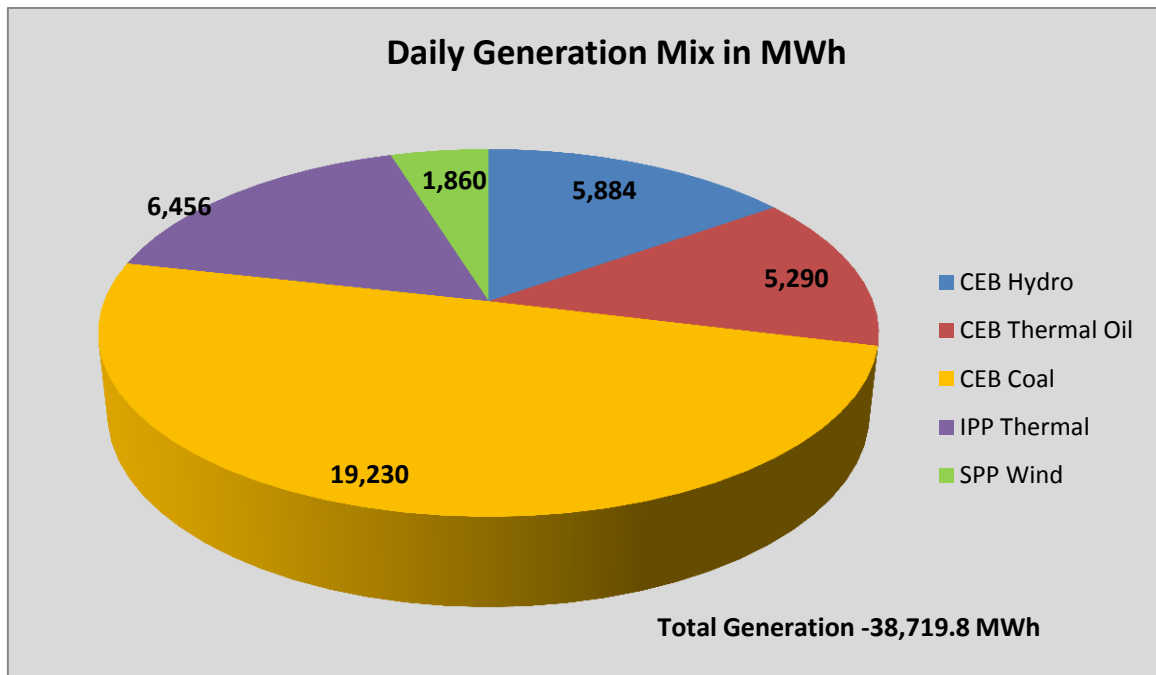


# **Generation and Reservoirs Statistics**

August 31, 2016



PUBLIC UTILITIES COMMISSION OF SRI LANKA



**Note:** Generation from other SPPs (Mini Hydro, Solar and Biomass) is not included

### Cumulative Dispatch till August 31, 2016

#### For Current Month

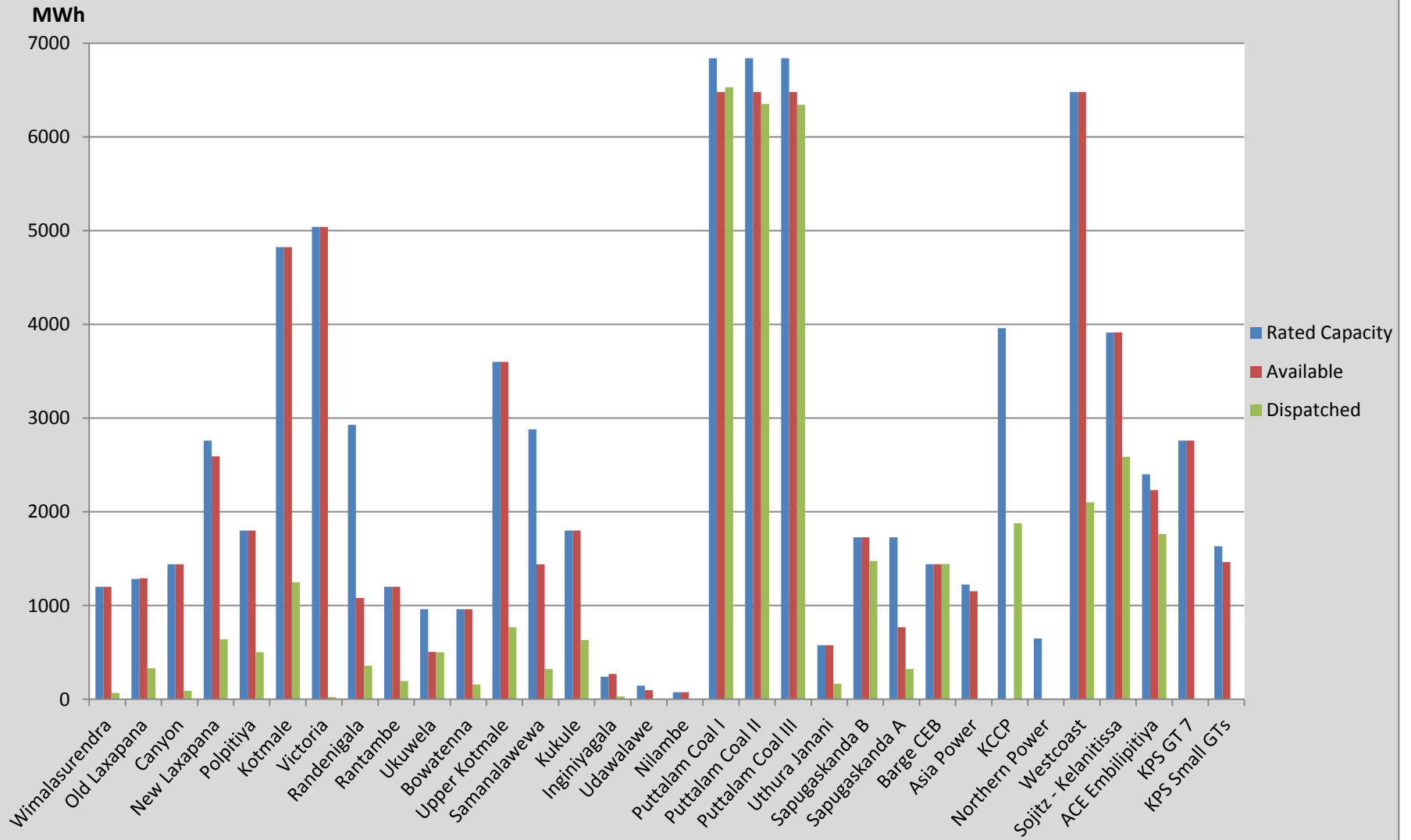
| Category        | Dispatch (MWh)     |        |
|-----------------|--------------------|--------|
| CEB Hydro       | 240,493.0          | 20.45% |
| CEB Thermal Oil | 140,580.0          | 11.96% |
| CEB Coal        | 566,790.0          | 48.20% |
| IPP Thermal     | 186,726.0          | 15.88% |
| SPP Wind        | 41,224.1           | 3.51%  |
| <b>Total</b>    | <b>1,175,813.1</b> |        |

#### For Current Year

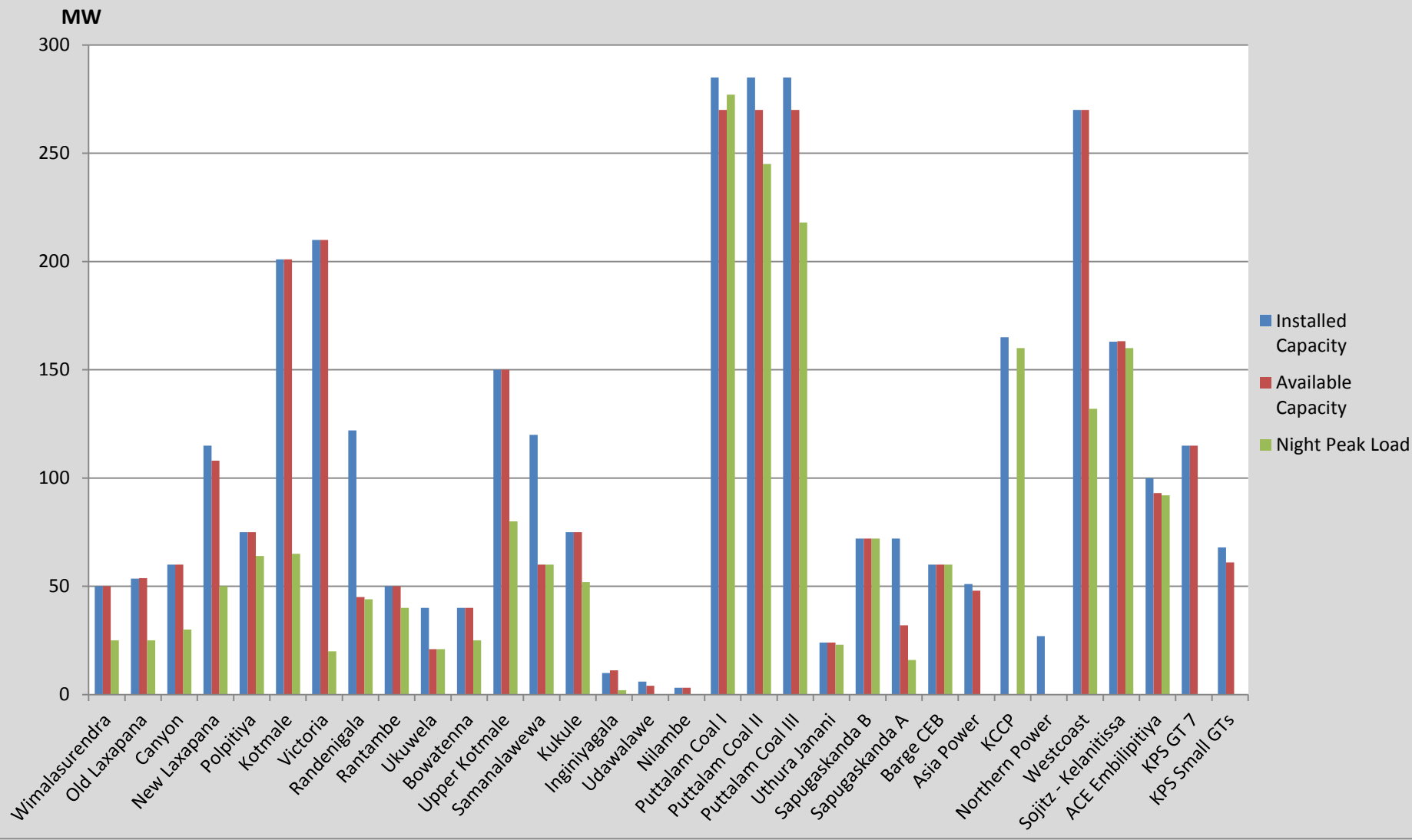
| Category        | Dispatch (GWh) |        |
|-----------------|----------------|--------|
| CEB Hydro       | 2,664          | 28.94% |
| CEB Thermal Oil | 1,339          | 14.55% |
| CEB Coal        | 3,388          | 36.81% |
| IPP Thermal     | 1,242          | 13.49% |
| Renewable       | 572            | 6.21%  |
| <b>Total</b>    | <b>9,204</b>   |        |

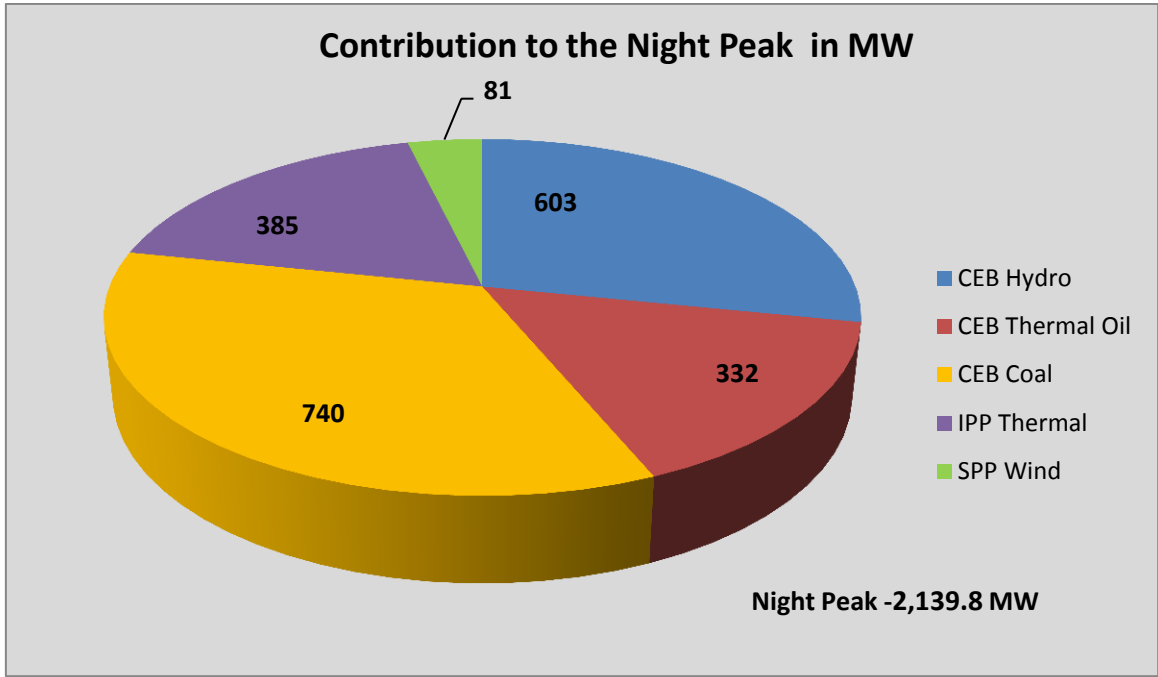
**Note:** Generation from Mini Hydro, Solar and Biomass power plants during June, July and August is not included in annual cumulative renewable generation figure.

### Dispatch on August 31, 2016



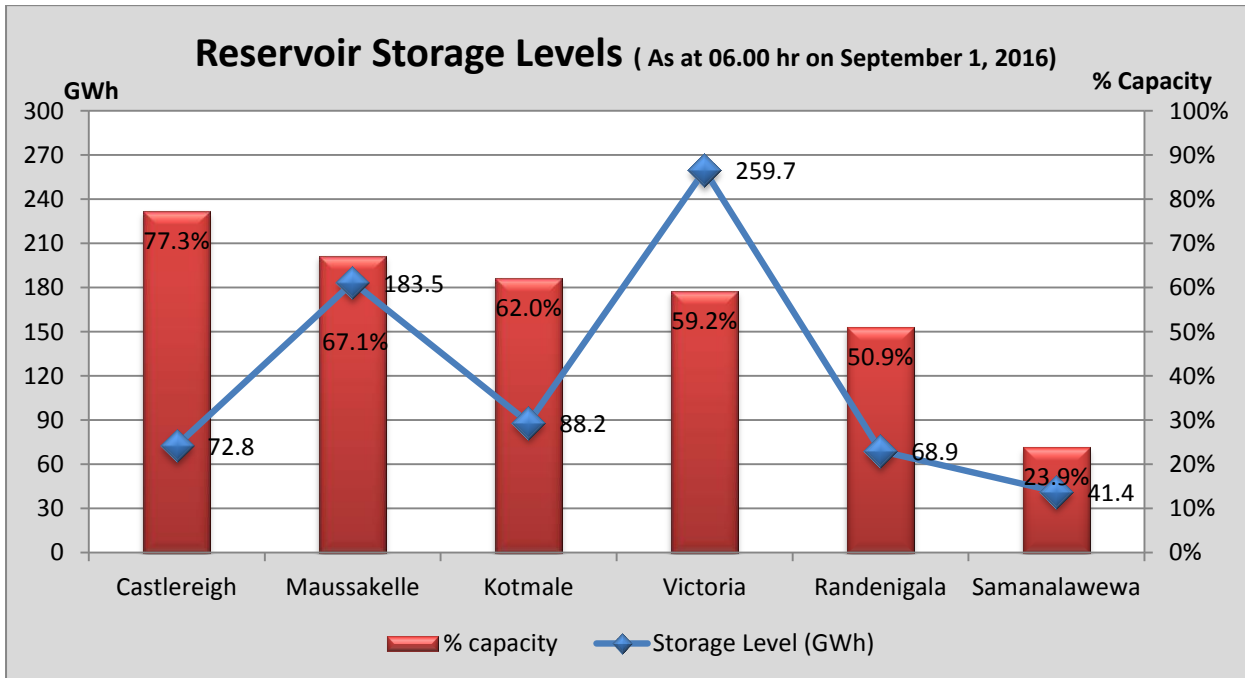
### Night Peak Contribution on August 31, 2016





- Day Peak Demand –1,904.5 MW
- Minimum Recorded Demand –1,076.9 MW

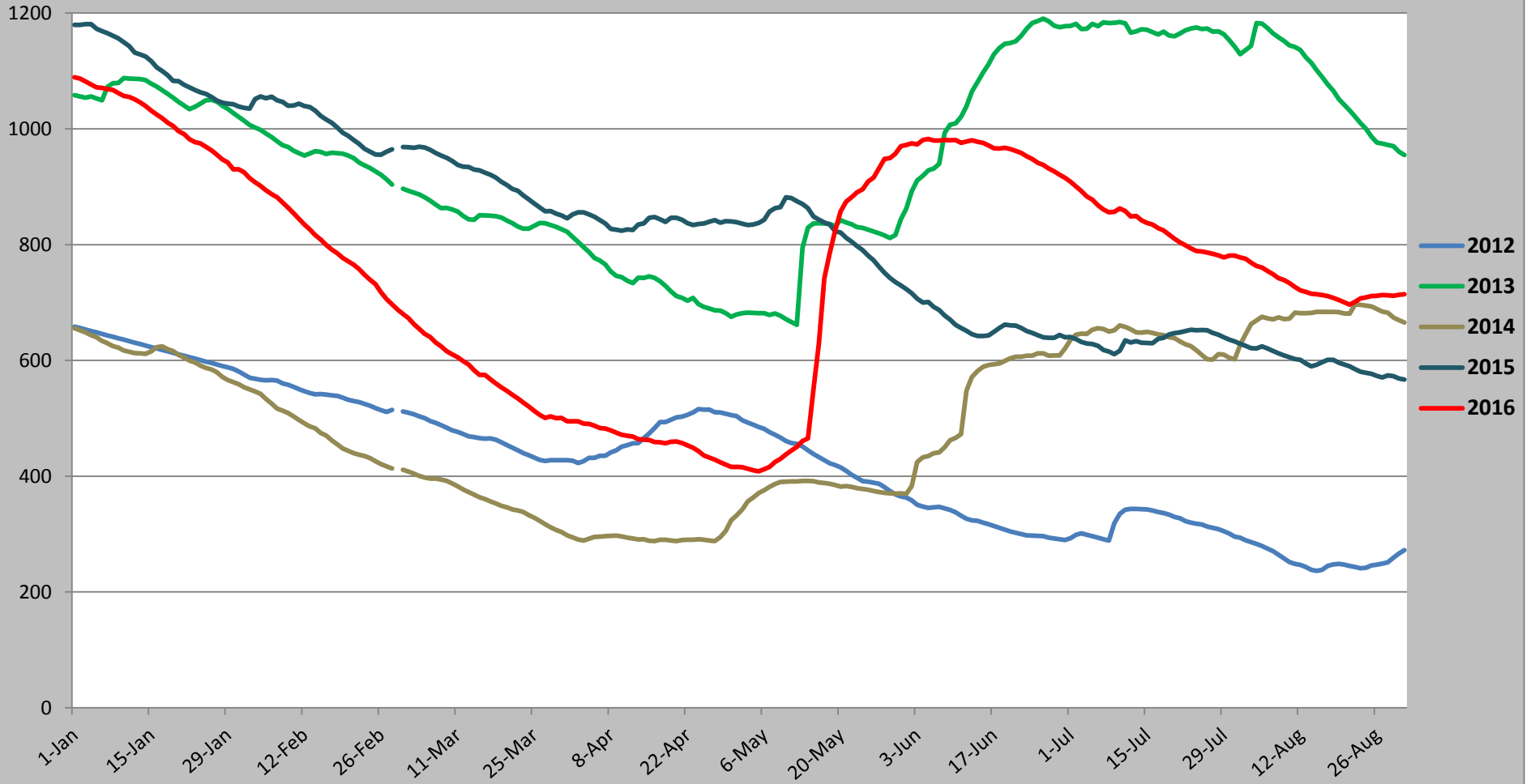
*Note: Contribution from other SPPs (Mini Hydro, Solar and Biomass) is not included*

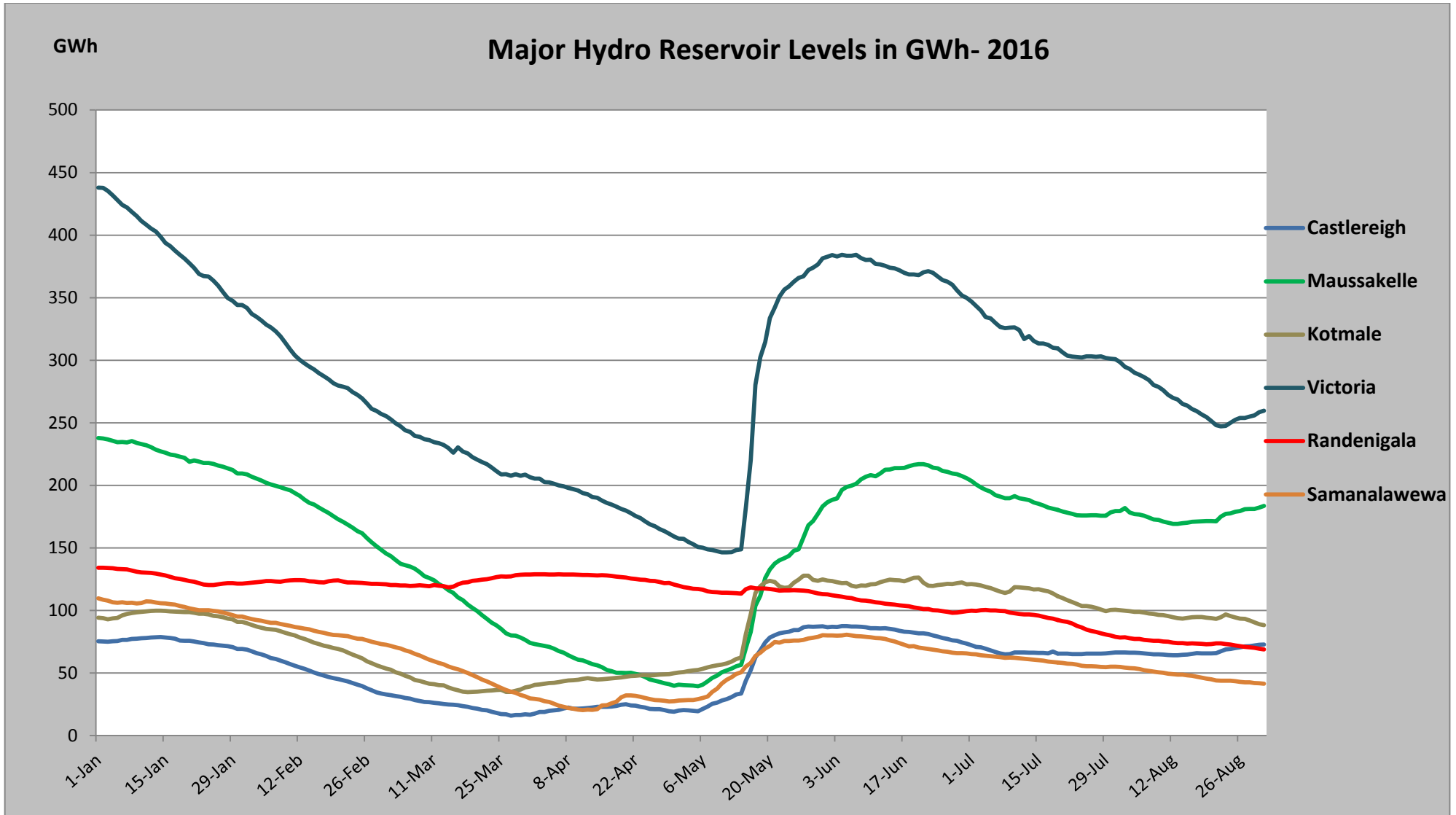


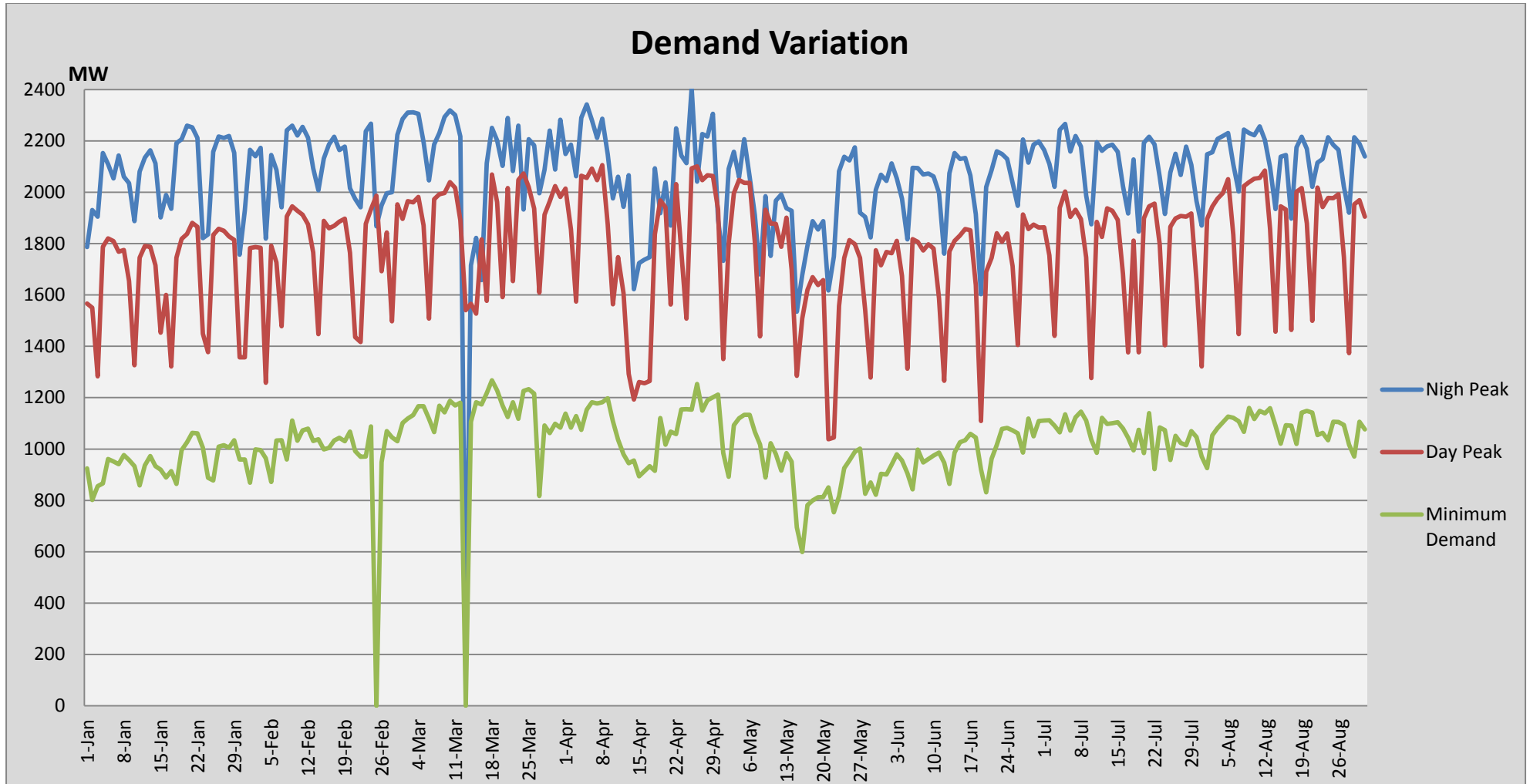
**Note:** Hydro Reservoir Storage Capacity as at September 1, 2016 – 714.5 GWh (56.78 %)

GWh

### Comparison of Total Reservoir Storage Levels with Past Years



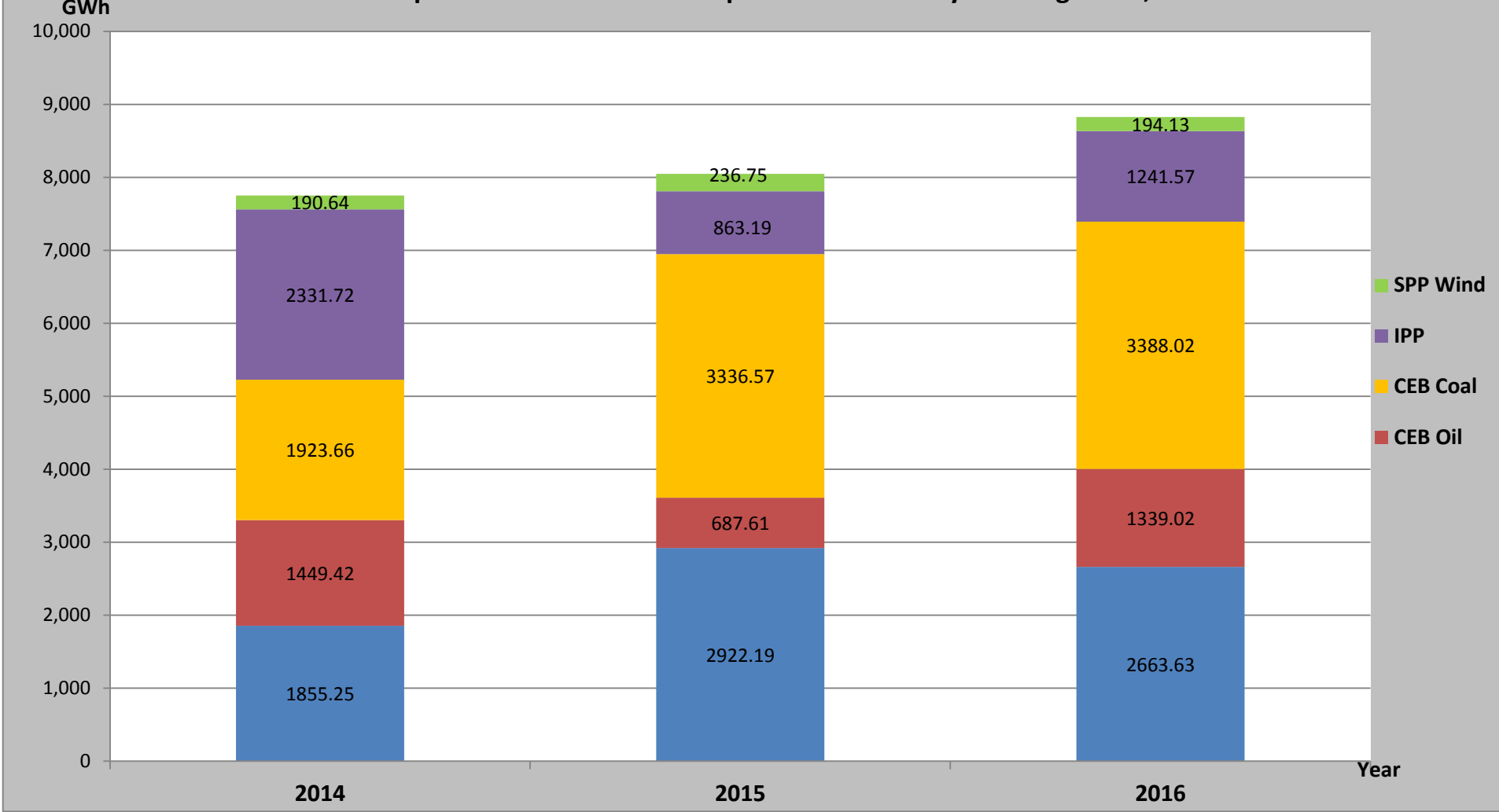




**Note:** Contribution from Mini Hydro, Solar and Biomass is not included

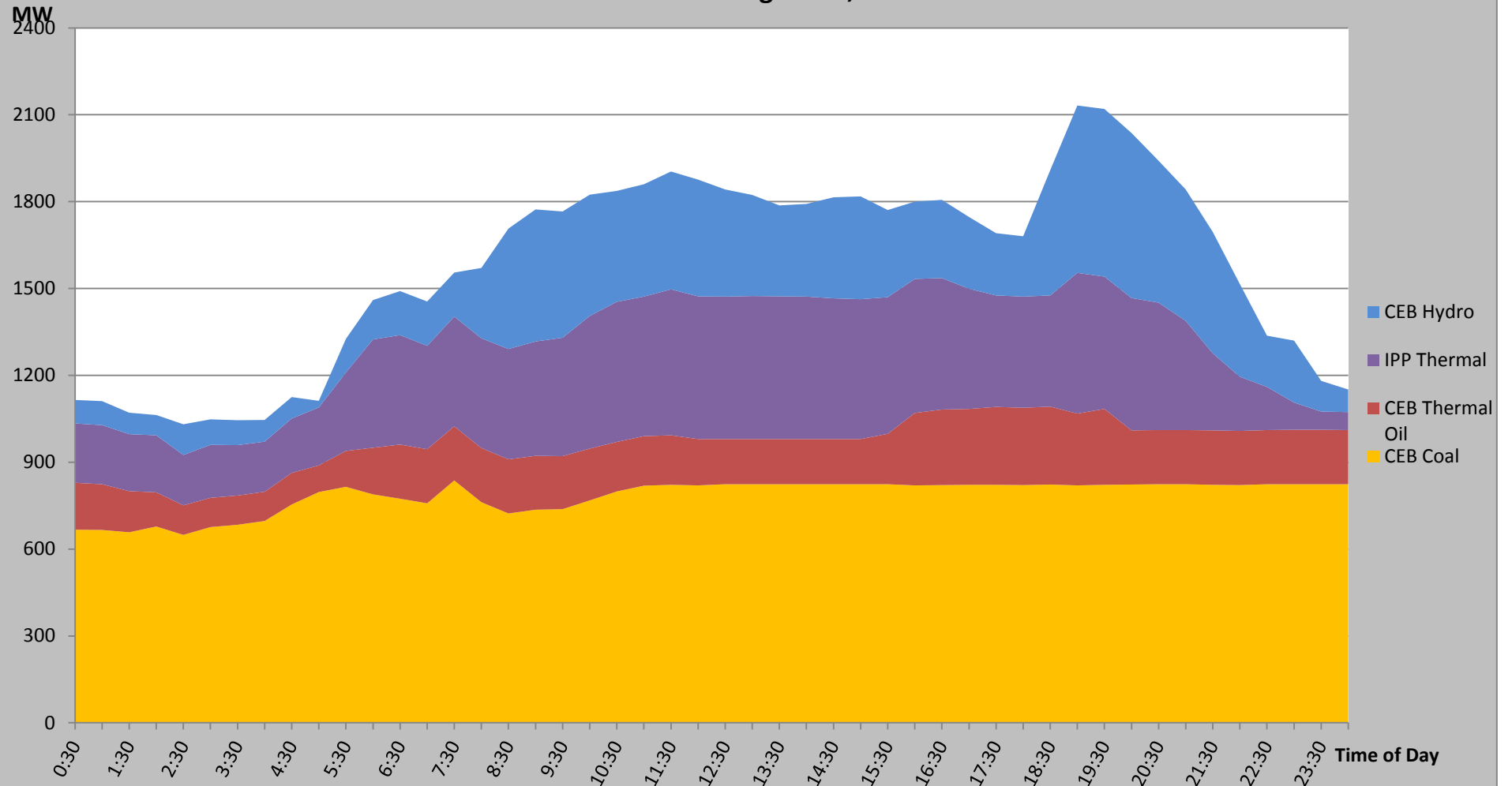


**Comparison of Cumulative Dispatch from January 1 to August 31, 2016**



**Note:** Generation from SPP Mini Hydro, Solar and Biomass is not included

Load Curve for August 30,2016



## List of Power Stations

| Power Station                       | Capacity (MW) | Primary Fuel            |
|-------------------------------------|---------------|-------------------------|
| <b>CEB Hydro</b>                    |               |                         |
| Victoria                            | 210           |                         |
| Ukuwela                             | 40            |                         |
| Kotmale                             | 201           |                         |
| Randenigala                         | 122           |                         |
| Rantambe                            | 49            |                         |
| Bowatenna                           | 40            |                         |
| Nilambe                             | 3.2           |                         |
| Upper Kotmale                       | 150           |                         |
| Old Laxapana                        | 50            |                         |
| New Laxapana                        | 115           |                         |
| Polpitiya                           | 75            |                         |
| Wimalasurendra                      | 50            |                         |
| Canyon                              | 60            |                         |
| Samanalawewa                        | 120           |                         |
| Kukuleganga                         | 75            |                         |
| Inginiyagala                        | 10            |                         |
| Udawalawe                           | 6             |                         |
| <b>CEB Thermal</b>                  |               |                         |
| Sapugaskanda 1                      | 72            | Heavy Fuel              |
| Sapugaskanda 2                      | 72            | Heavy Fuel              |
| Kelanitissa Small Gas Turbines      | 68            | Auto Diesel             |
| GT 7 - Kelanitissa                  | 115           | Auto Diesel             |
| Kelanitissa CCY                     | 165           | Naptha & Diesel         |
| Lakvijaya (Puttalam Coal)           | 285           | Coal                    |
| Lakvijaya (Puttalam Coal) Stage II  | 285           | Coal                    |
| Lakvijaya (Puttalam Coal) Stage III | 285           | Coal                    |
| Uthuru Janani                       | 24            | Heavy Fuel              |
| Barge CEB                           | 60            | Furnace Oil             |
| <b>Private Thermal (IPPs)</b>       |               |                         |
| Asia Power                          | 51            | Heavy Fuel              |
| Sojitz - Kelanitissa                | 163           | Auto Diesel             |
| West Coast                          | 270           | Low Sulphur Furnace oil |
| Northern Power                      | 27            | Auto Diesel             |
| ACE Embilipitiya                    | 100           | Furnace Oil             |