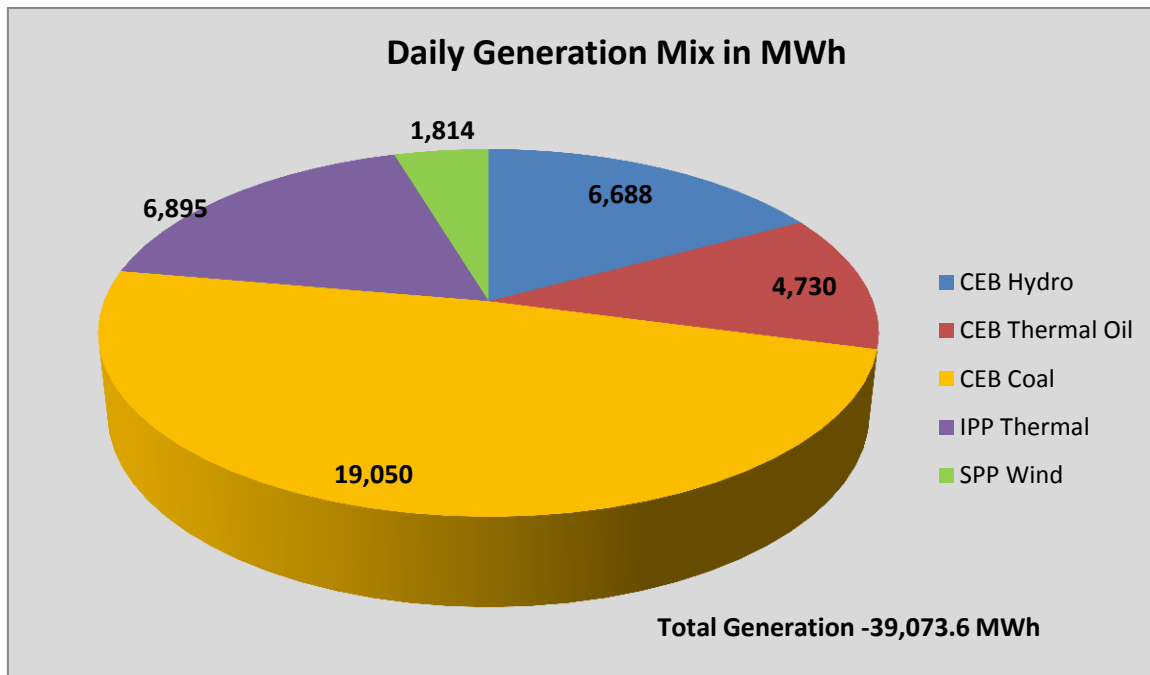


# **Generation and Reservoirs Statistics**

August 26, 2016



PUBLIC UTILITIES COMMISSION OF SRI LANKA



**Note:** Generation from other SPPs (Mini Hydro, Solar and Biomass) is not included

### Cumulative Dispatch- 2016

**July, 2016**

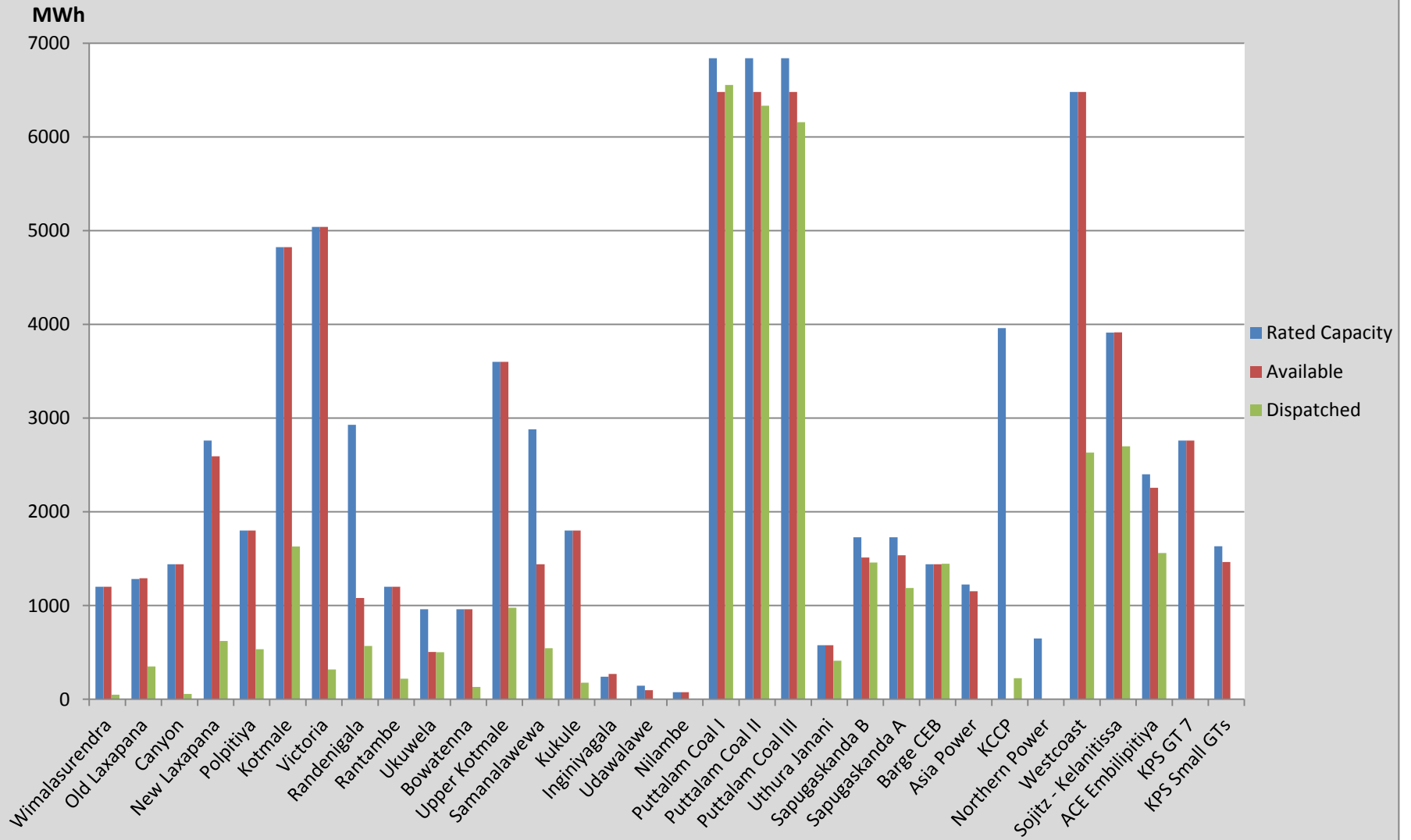
| Category        | Dispatch (MWh)   |        |
|-----------------|------------------|--------|
| CEB Hydro       | 207,941.0        | 20.95% |
| CEB Thermal Oil | 119,560.0        | 12.05% |
| CEB Coal        | 473,920.0        | 47.75% |
| IPP Thermal     | 157,990.0        | 15.92% |
| SPP Wind        | 33,160.8         | 3.34%  |
| <b>Total</b>    | <b>992,571.8</b> |        |

**January 1 to August 26, 2016**

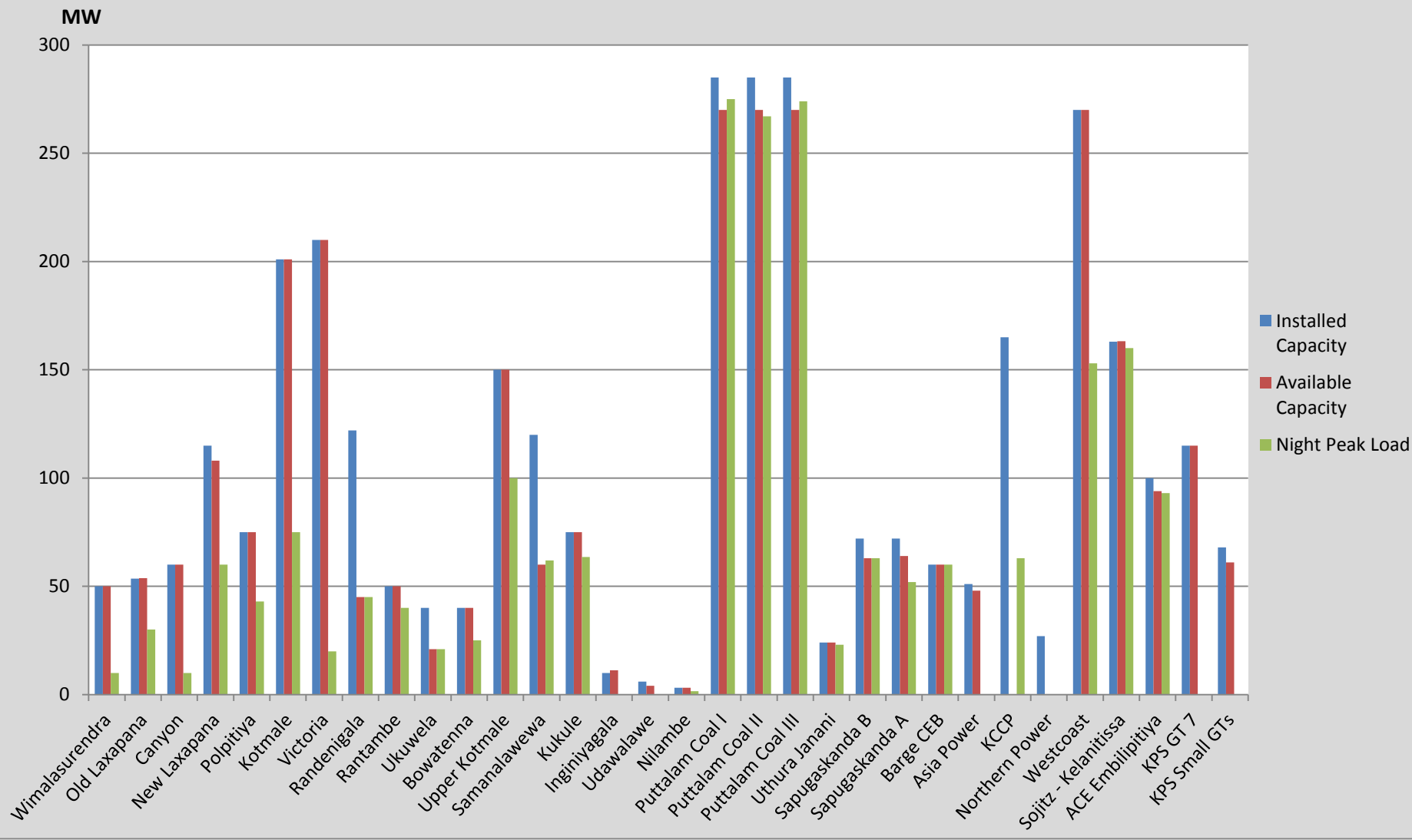
| Category        | Dispatch (GWh) |        |
|-----------------|----------------|--------|
| CEB Hydro       | 2,631          | 29.17% |
| CEB Thermal Oil | 1,318          | 14.61% |
| CEB Coal        | 3,295          | 36.53% |
| IPP Thermal     | 1,213          | 13.45% |
| Renewable       | 564            | 6.25%  |
| <b>Total</b>    | <b>9,021</b>   |        |

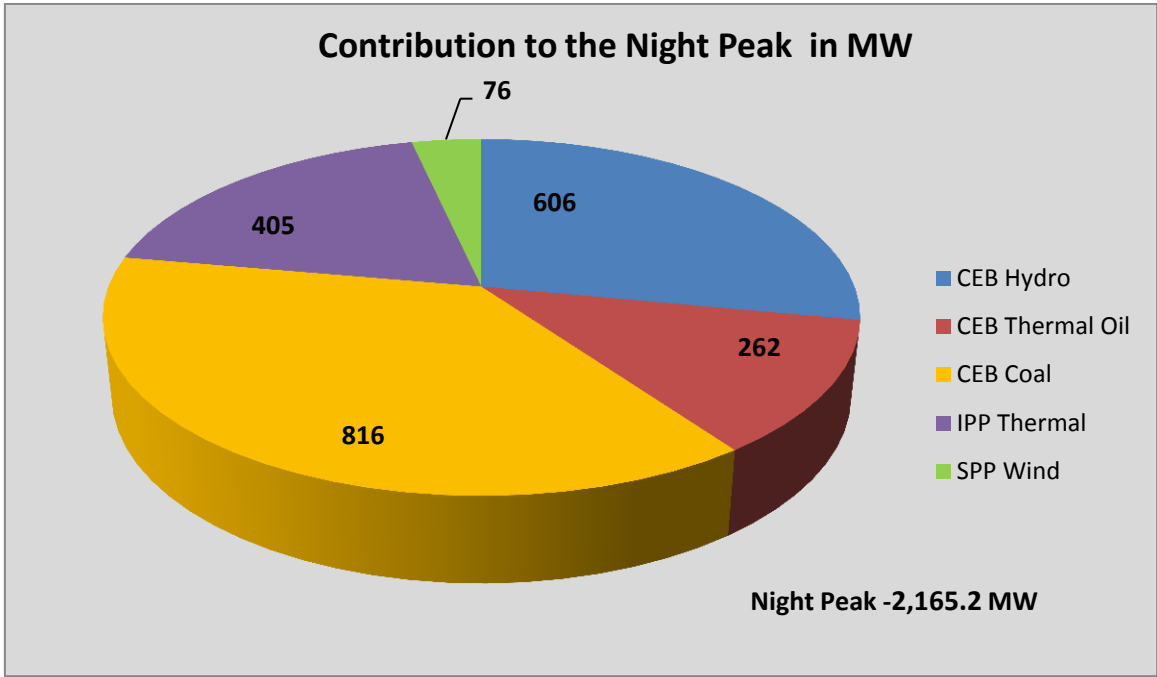
**Note:** Generation from Mini Hydro, Solar and Biomass power plants during June, July and August is not included in annual cumulative renewable generation figure.

### Dispatch on August 26, 2016



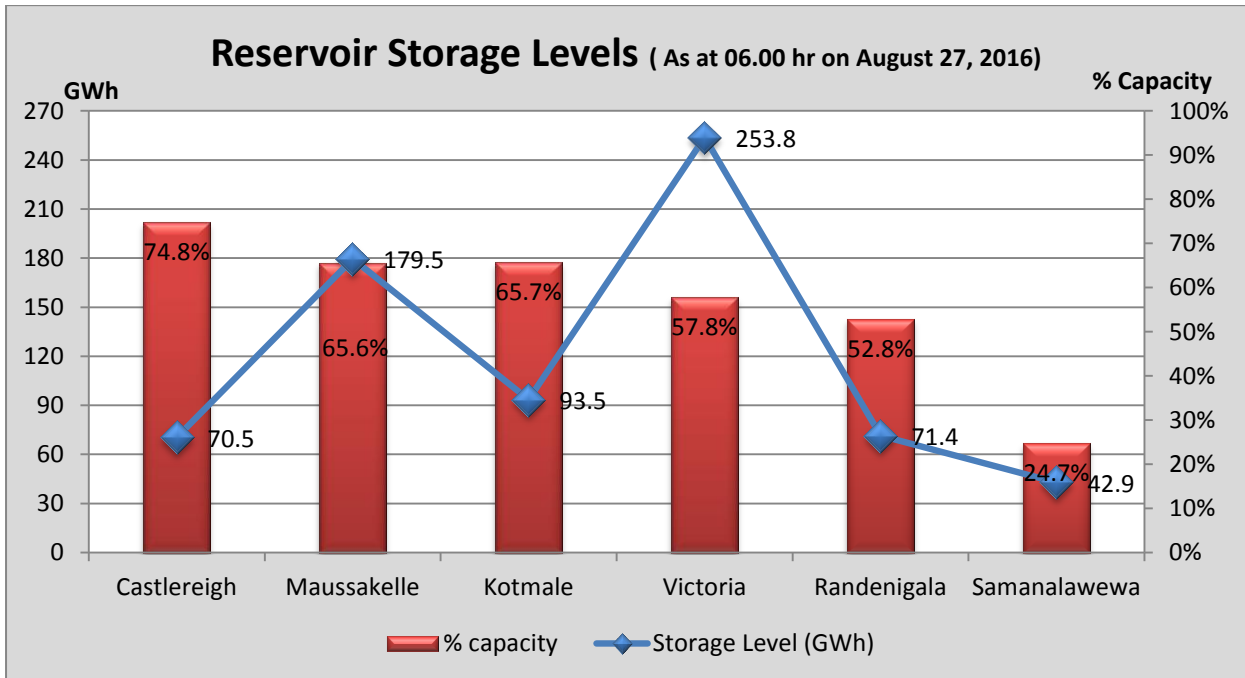
### Night Peak Contribution on August 26, 2016





- Day Peak Demand –1,992.3 MW
- Minimum Recorded Demand –1,105.6 MW

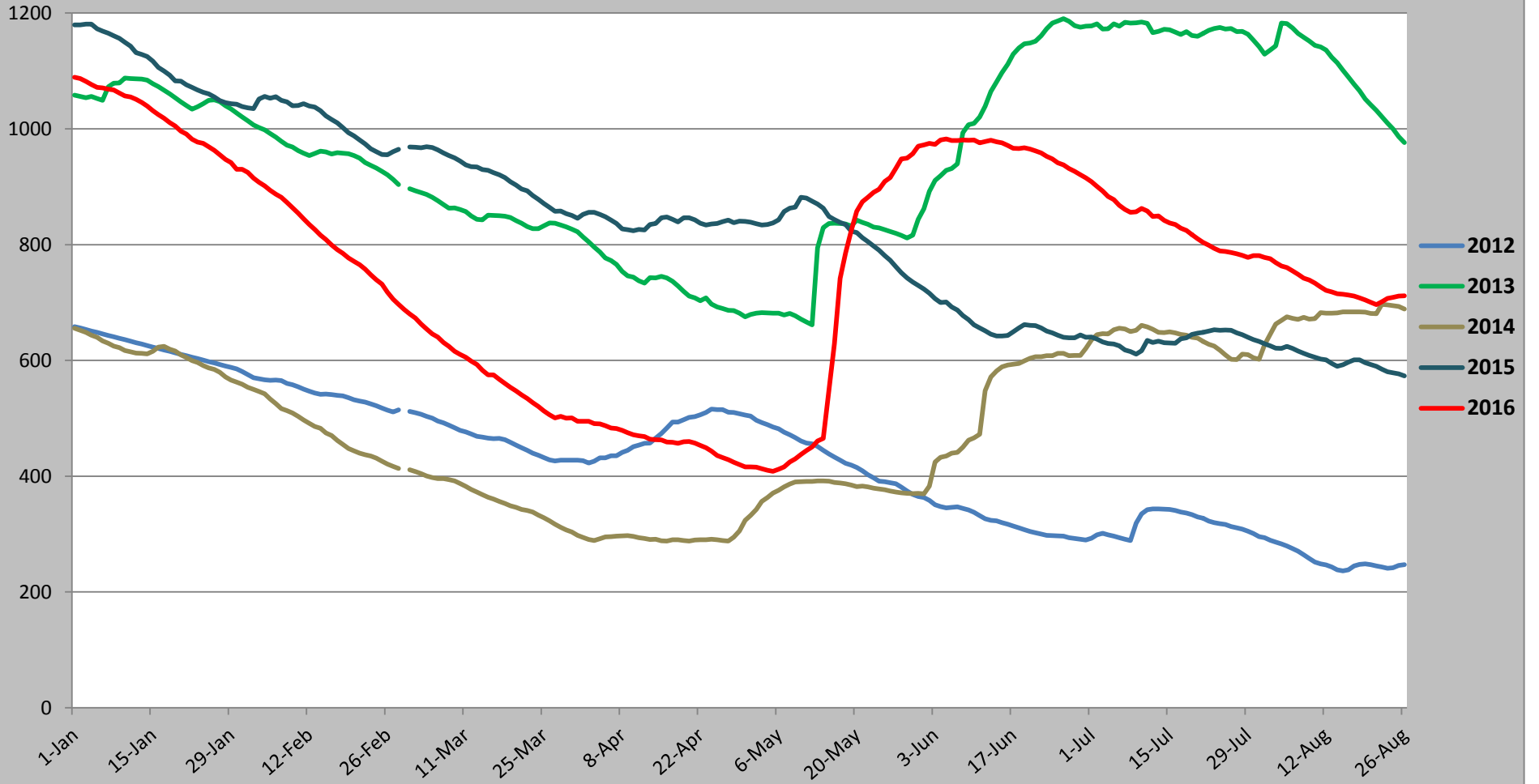
*Note: Contribution from other SPPs (Mini Hydro, Solar and Biomass) is not included*

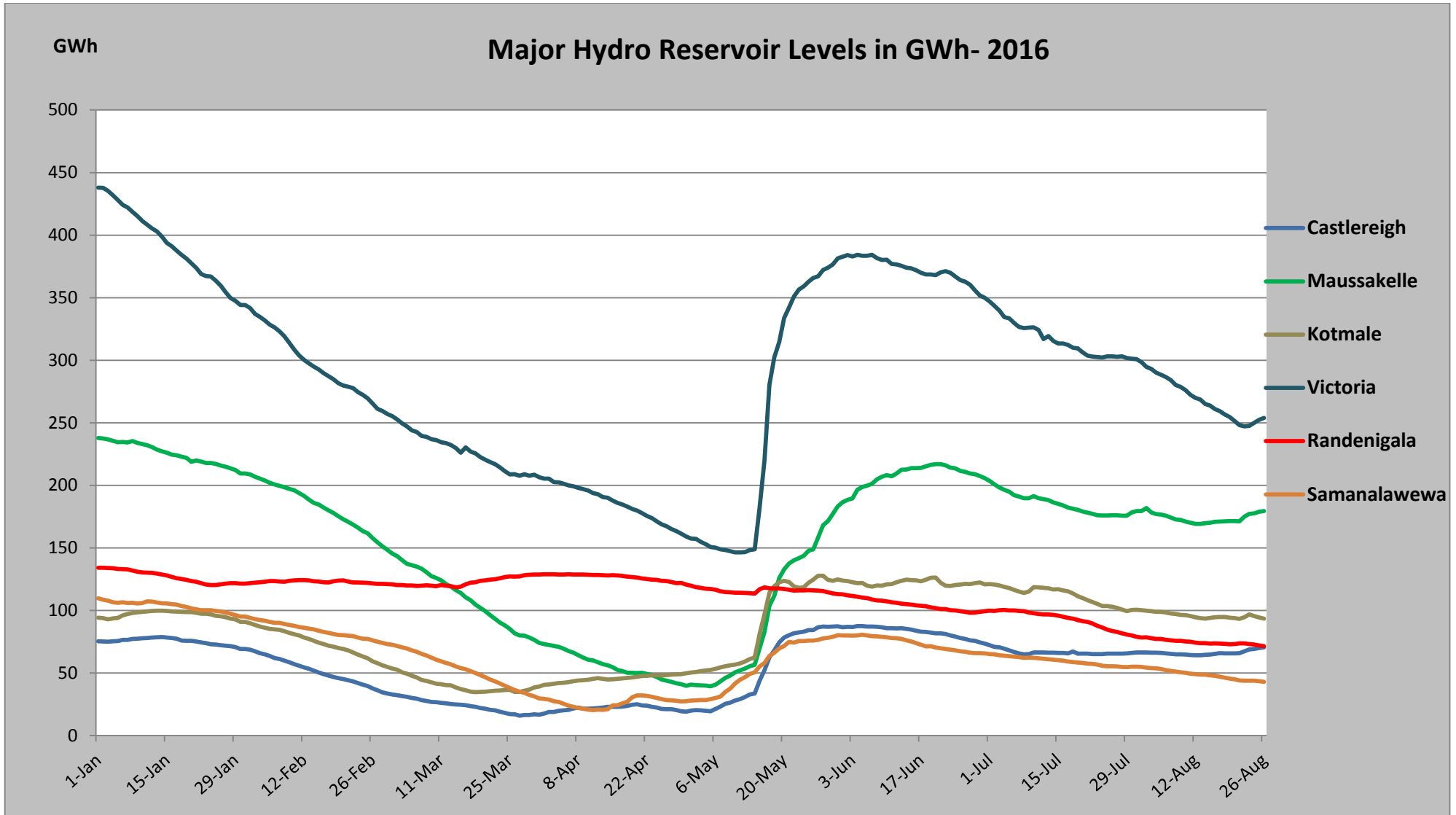


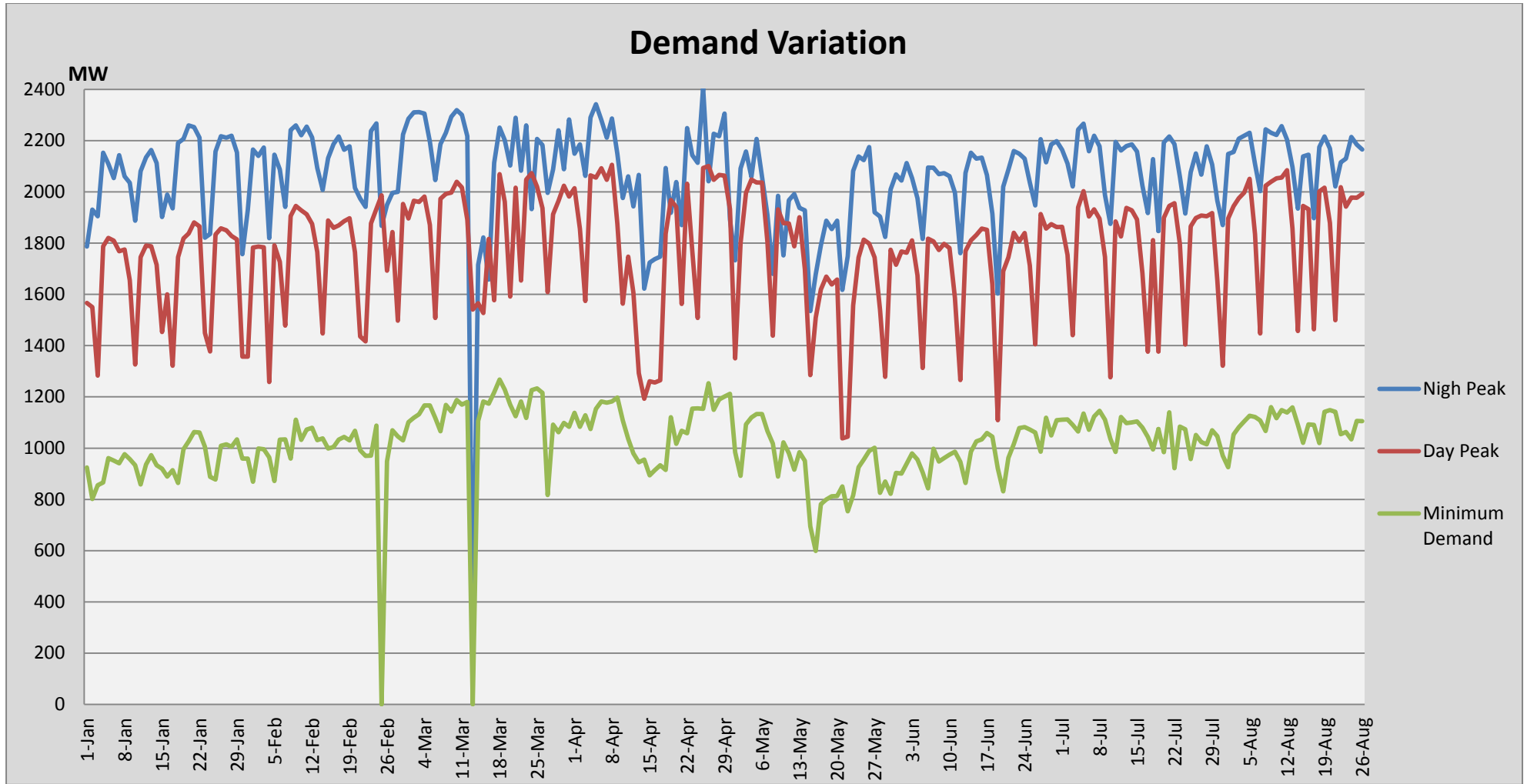
**Note:** Hydro Reservoir Storage Capacity as at August 27, 2016 – 711.6 GWh (56.54 %)

GWh

### Comparison of Total Reservoir Storage Levels with Past Years



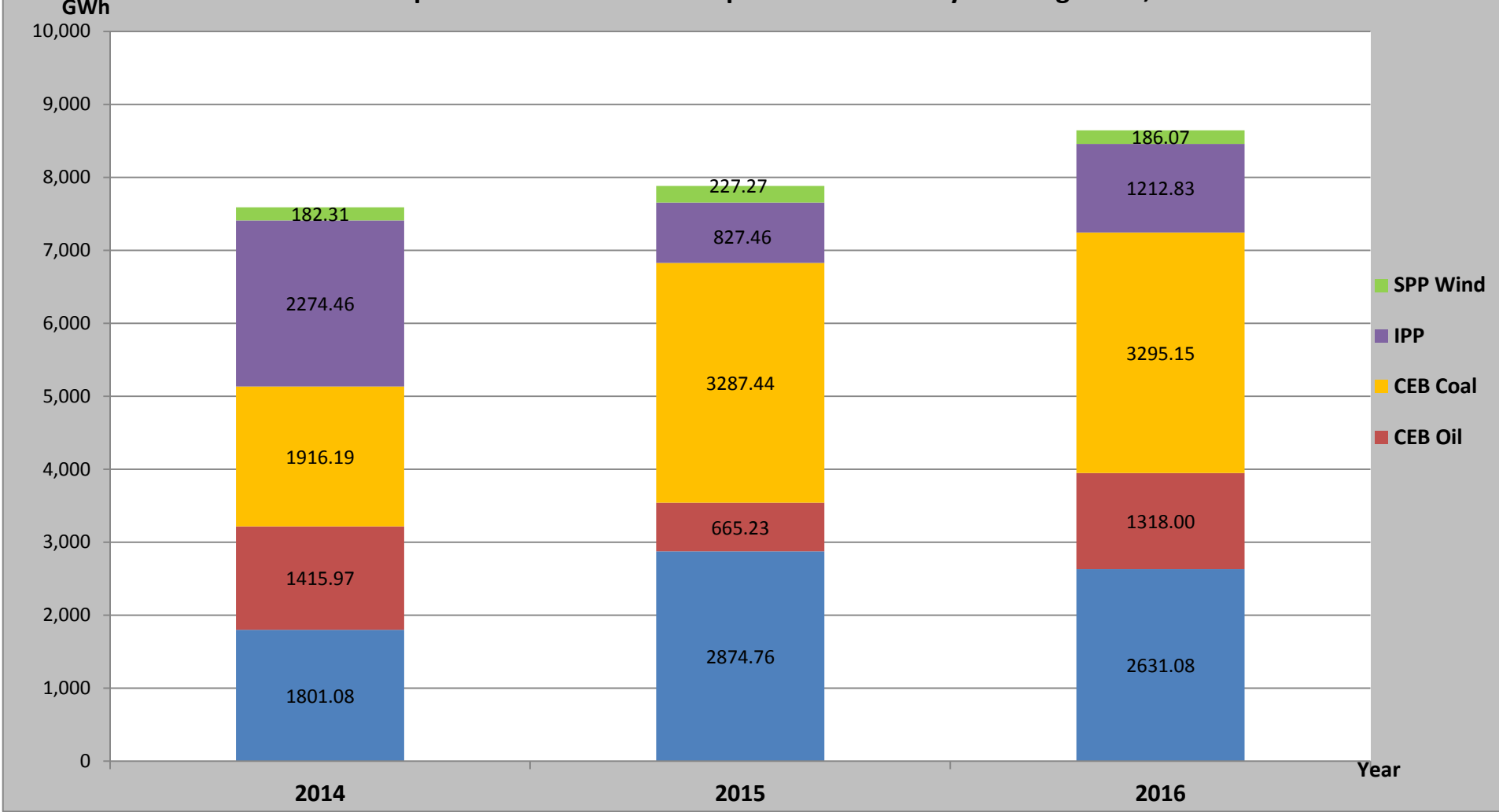




**Note:** Contribution from Mini Hydro, Solar and Biomass is not included



Comparison of Cumulative Dispatch from January 1 to August 26, 2016



Note: Generation from SPP Mini Hydro, Solar and Biomass is not included

Load Curve for August 25,2016 will be published in Generation Report August 29 2016

## List of Power Stations

| Power Station                       | Capacity (MW) | Primary Fuel            |
|-------------------------------------|---------------|-------------------------|
| <b>CEB Hydro</b>                    |               |                         |
| Victoria                            | 210           |                         |
| Ukuwela                             | 40            |                         |
| Kotmale                             | 201           |                         |
| Randenigala                         | 122           |                         |
| Rantambe                            | 49            |                         |
| Bowatenna                           | 40            |                         |
| Nilambe                             | 3.2           |                         |
| Upper Kotmale                       | 150           |                         |
| Old Laxapana                        | 50            |                         |
| New Laxapana                        | 115           |                         |
| Polpitiya                           | 75            |                         |
| Wimalasurendra                      | 50            |                         |
| Canyon                              | 60            |                         |
| Samanalawewa                        | 120           |                         |
| Kukuleganga                         | 75            |                         |
| Inginiyagala                        | 10            |                         |
| Udawalawe                           | 6             |                         |
| <b>CEB Thermal</b>                  |               |                         |
| Sapugaskanda 1                      | 72            | Heavy Fuel              |
| Sapugaskanda 2                      | 72            | Heavy Fuel              |
| Kelanitissa Small Gas Turbines      | 68            | Auto Diesel             |
| GT 7 - Kelanitissa                  | 115           | Auto Diesel             |
| Kelanitissa CCY                     | 165           | Naptha & Diesel         |
| Lakvijaya (Puttalam Coal)           | 285           | Coal                    |
| Lakvijaya (Puttalam Coal) Stage II  | 285           | Coal                    |
| Lakvijaya (Puttalam Coal) Stage III | 285           | Coal                    |
| Uthuru Janani                       | 24            | Heavy Fuel              |
| Barge CEB                           | 60            | Furnace Oil             |
| <b>Private Thermal (IPPs)</b>       |               |                         |
| Asia Power                          | 51            | Heavy Fuel              |
| Sojitz - Kelanitissa                | 163           | Auto Diesel             |
| West Coast                          | 270           | Low Sulphur Furnace oil |
| Northern Power                      | 27            | Auto Diesel             |
| ACE Embilipitiya                    | 100           | Furnace Oil             |