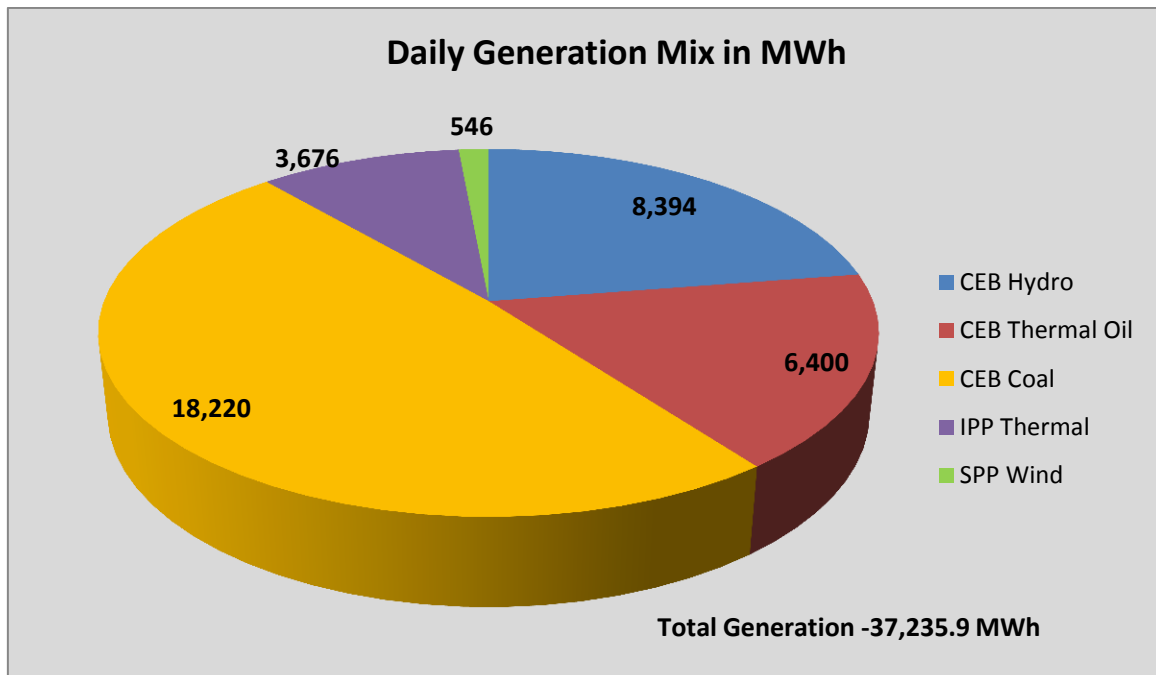


# **Generation and Reservoirs Statistics**

July 25, 2016



PUBLIC UTILITIES COMMISSION OF SRI LANKA



**Note:** Generation from other SPPs (Mini Hydro, Solar and Biomass) is not included

### Cumulative Dispatch- 2016

#### July, 2016

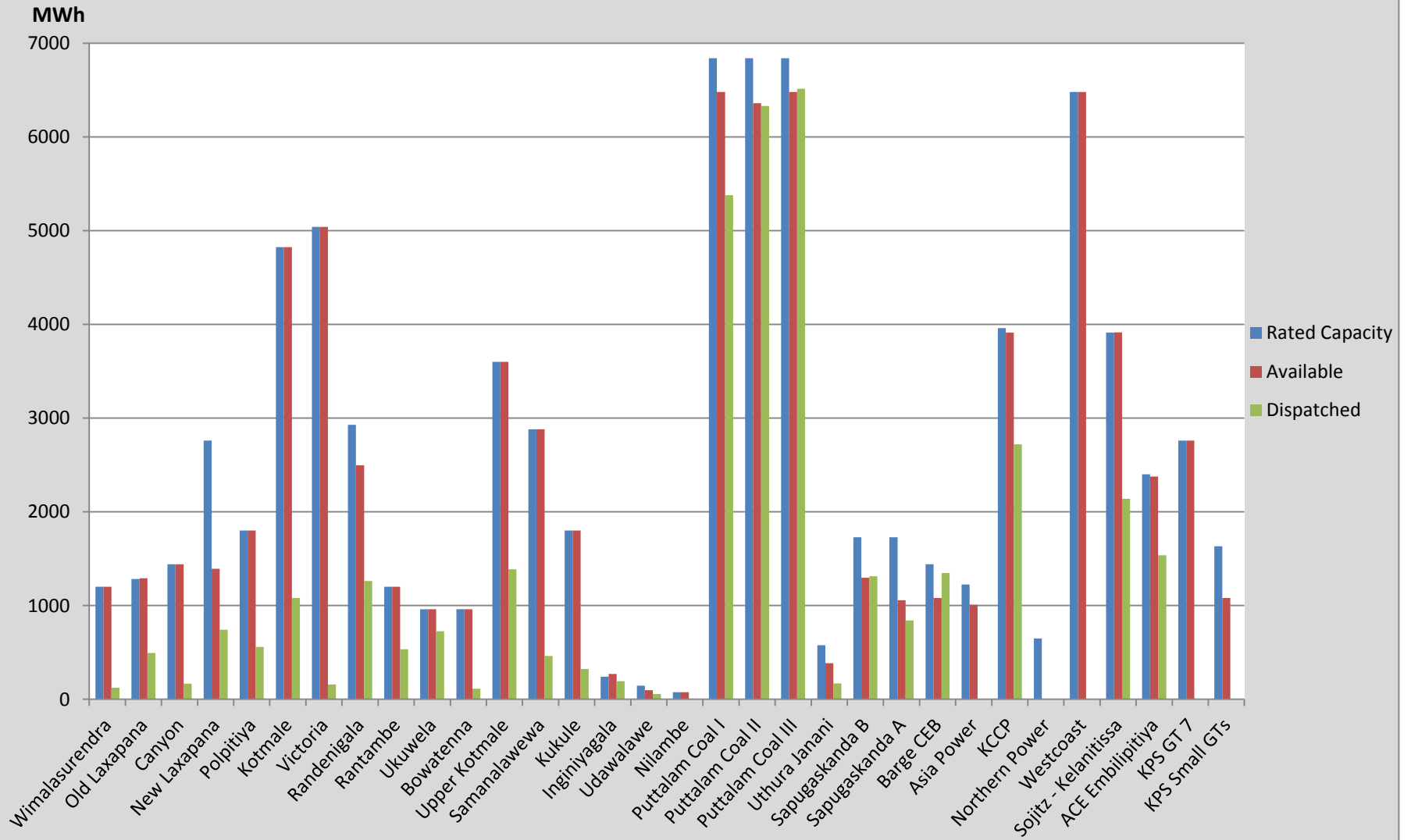
Category	Dispatch (MWh)	
CEB Hydro	280,229.0	30.45%
CEB Thermal Oil	136,290.0	14.81%
CEB Coal	398,920.0	43.34%
IPP Thermal	73,167.0	7.95%
SPP Wind	31,797.6	3.45%
<b>Total</b>	<b>920,403.6</b>	

#### January 1 to July 25, 2016

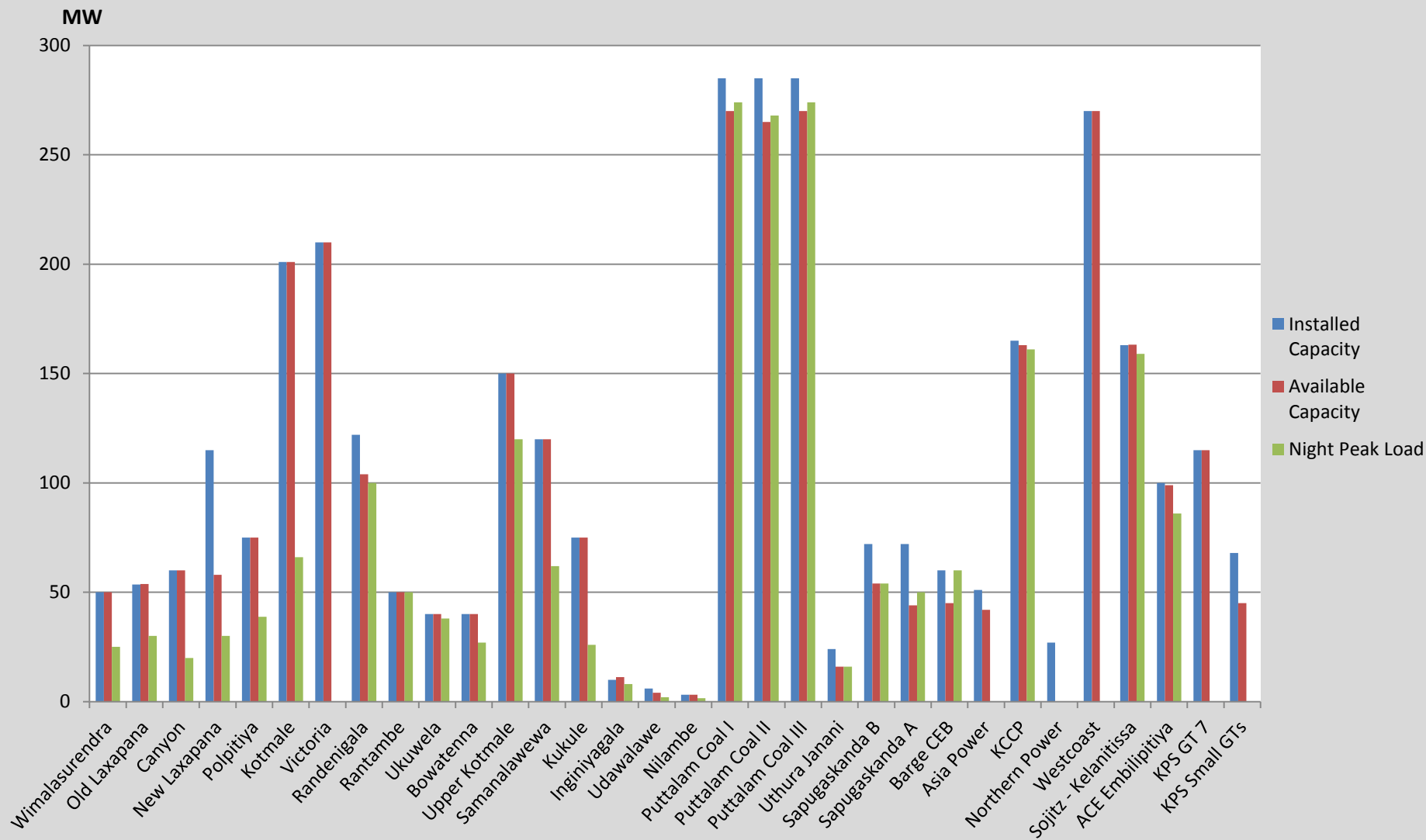
Category	Dispatch (GWh)	
CEB Hydro	2,369	30.84%
CEB Thermal Oil	1,167	15.19%
CEB Coal	2,708	35.24%
IPP Thermal	1,046	13.62%
Renewable	393	5.11%
<b>Total</b>	<b>7,683</b>	

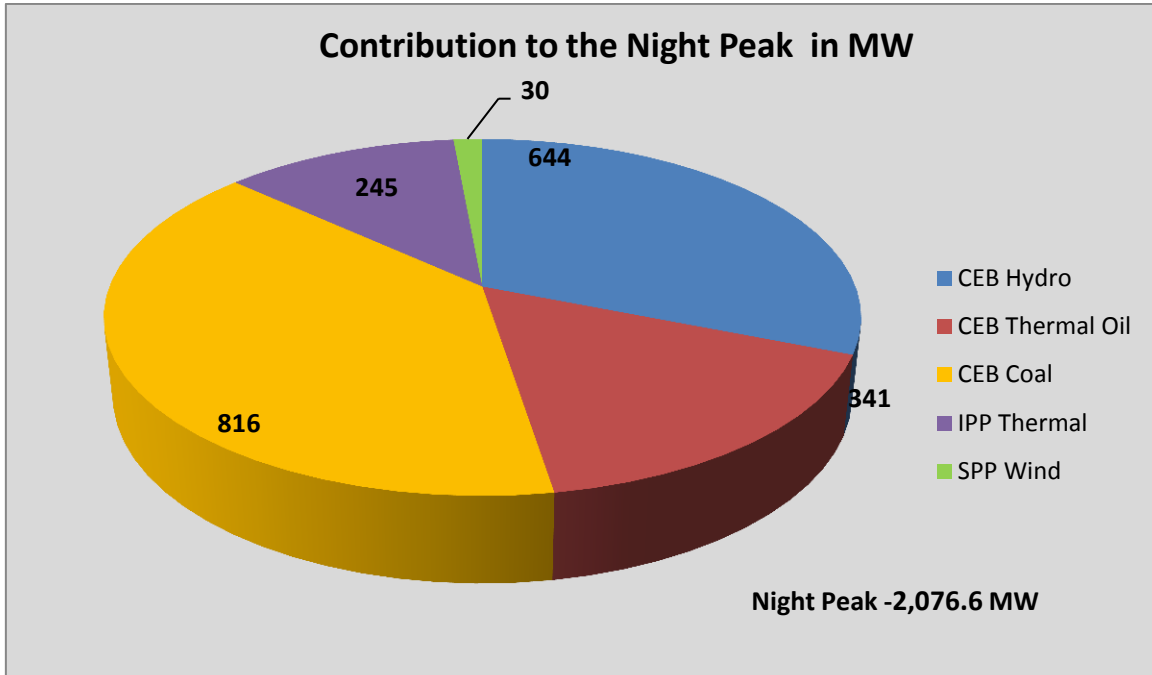
**Note:** Generation from Mini Hydro, Solar and Biomass power plants during May, June and July is not included in annual cumulative renewable generation figure.

### Dispatch on July 25, 2016



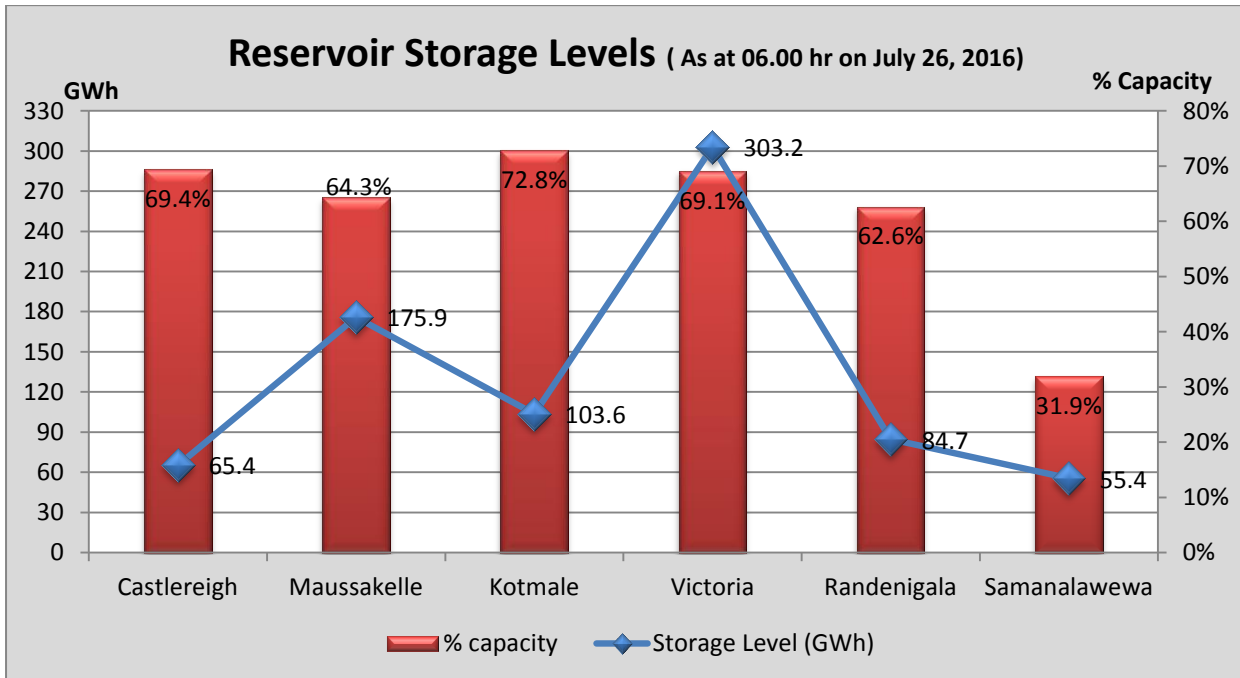
### Night Peak Contribution on July 25, 2016





- Day Peak Demand –1,865.6 MW
- Minimum Recorded Demand –957.1 MW

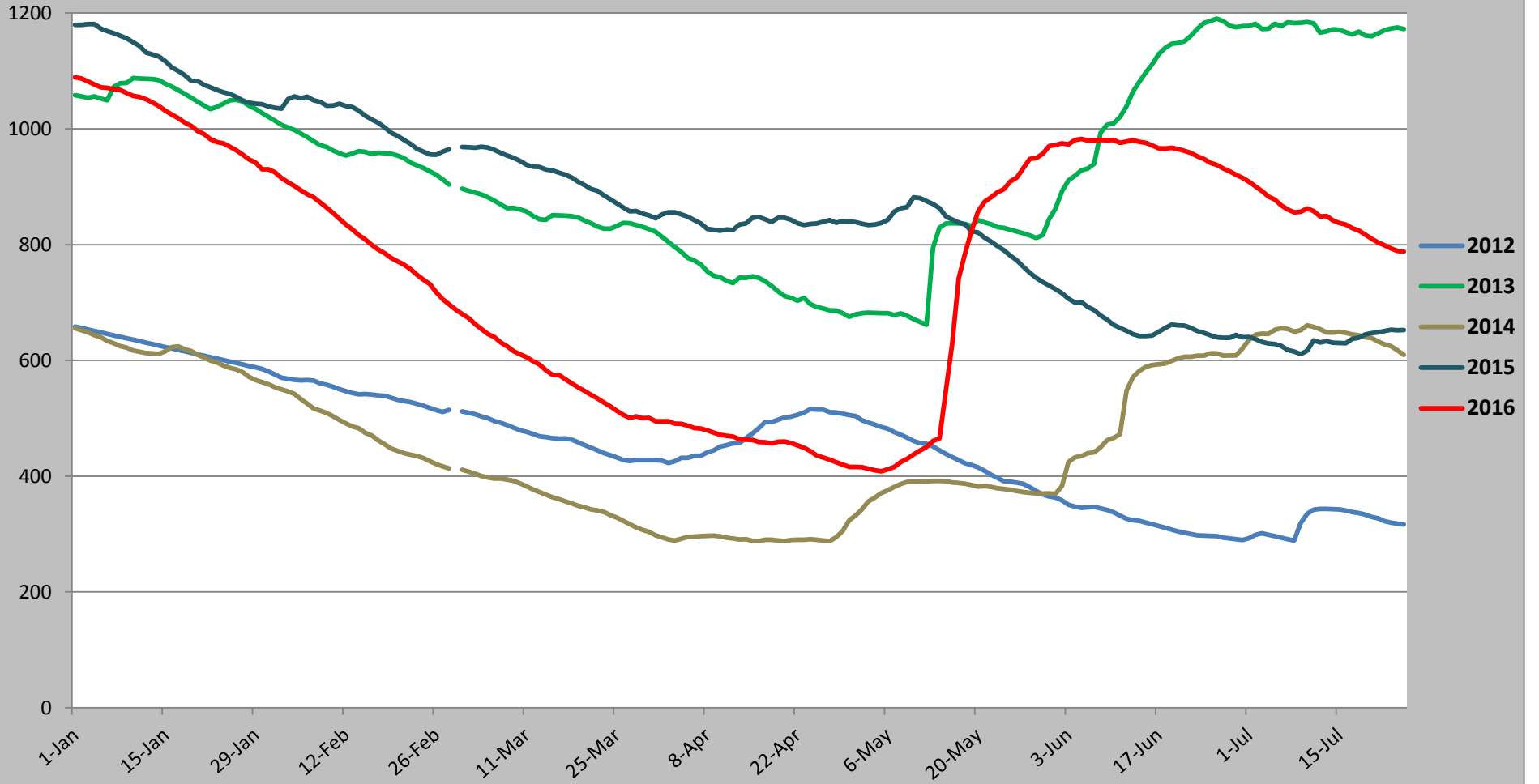
*Note: Contribution from other SPPs (Mini Hydro, Solar and Biomass) is not included*

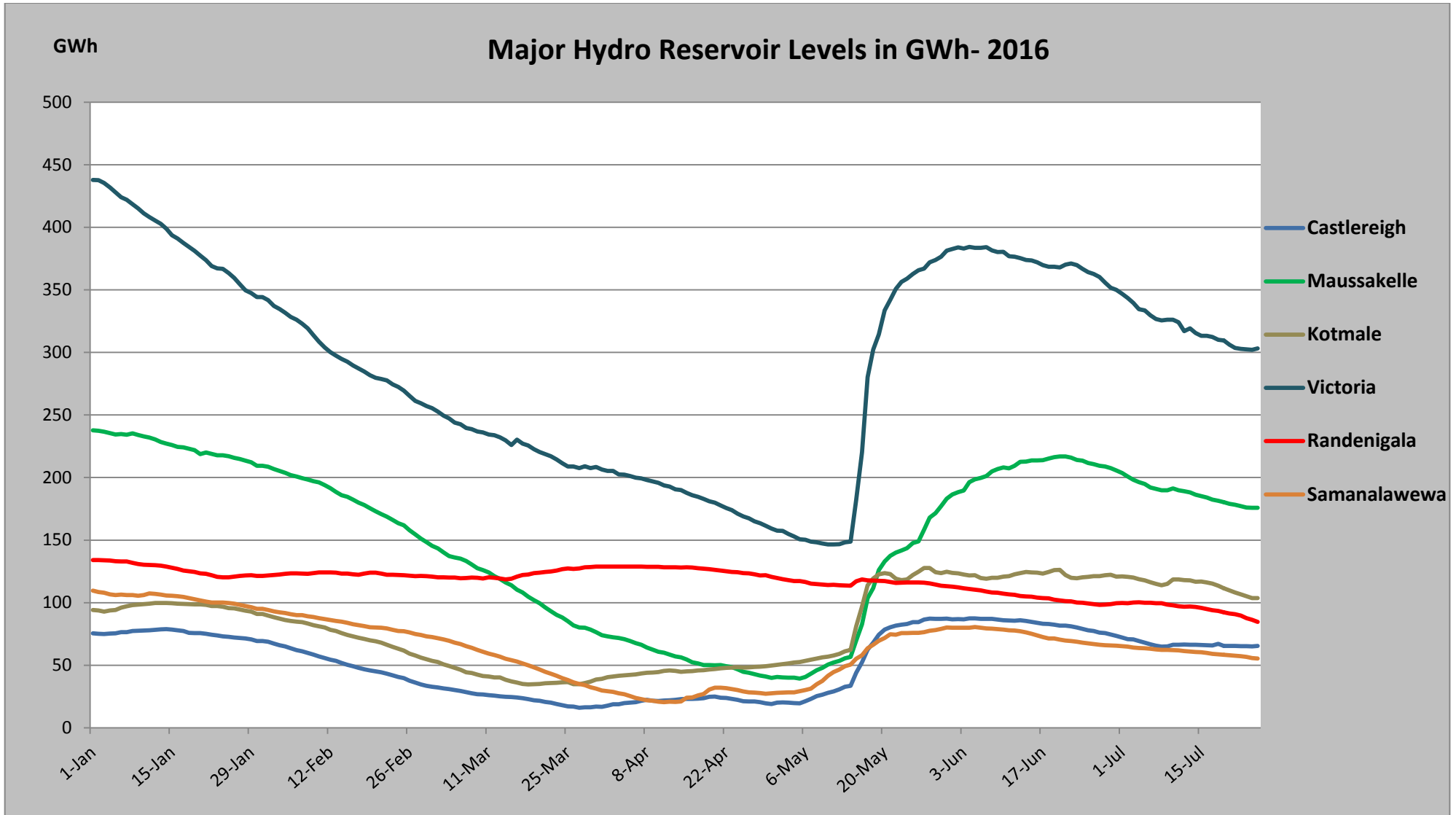


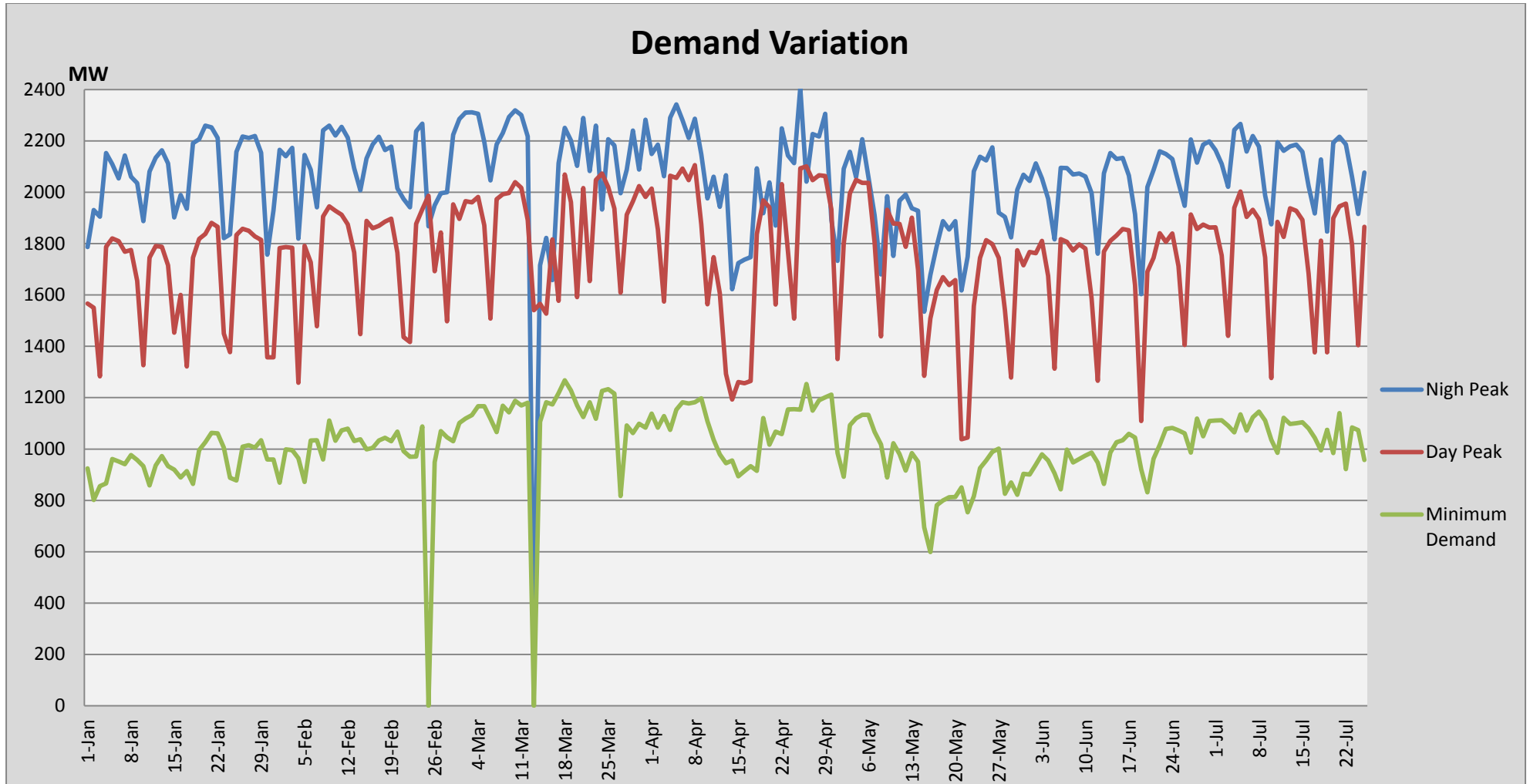
*Note: Hydro Reservoir Storage Capacity as at July 26, 2016 – 788.2 GWh (62.63%)*

GWh

### Comparison of Total Reservoir Storage Levels with Past Years



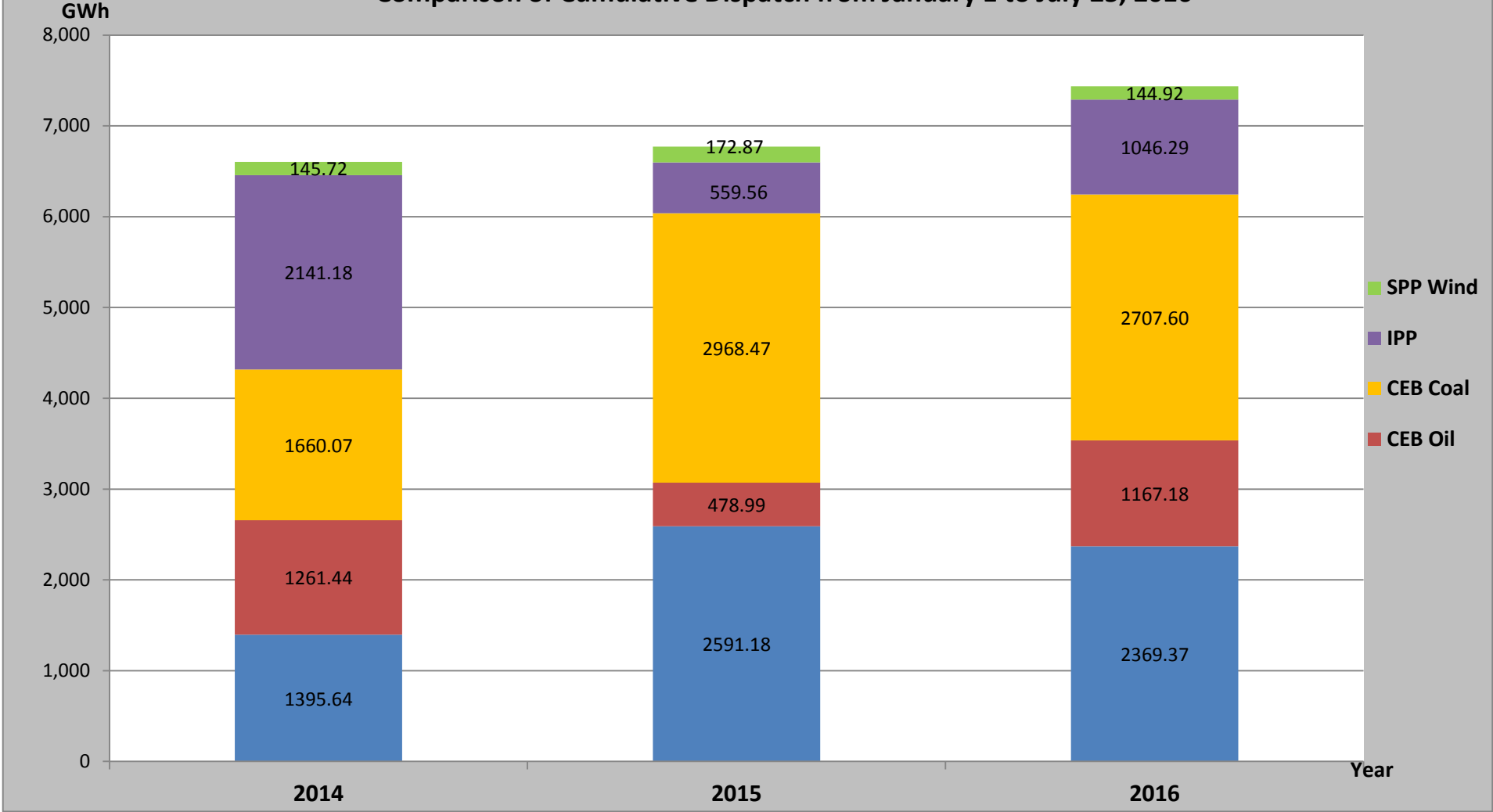




**Note:** Contribution from Mini Hydro, Solar and Biomass is not included

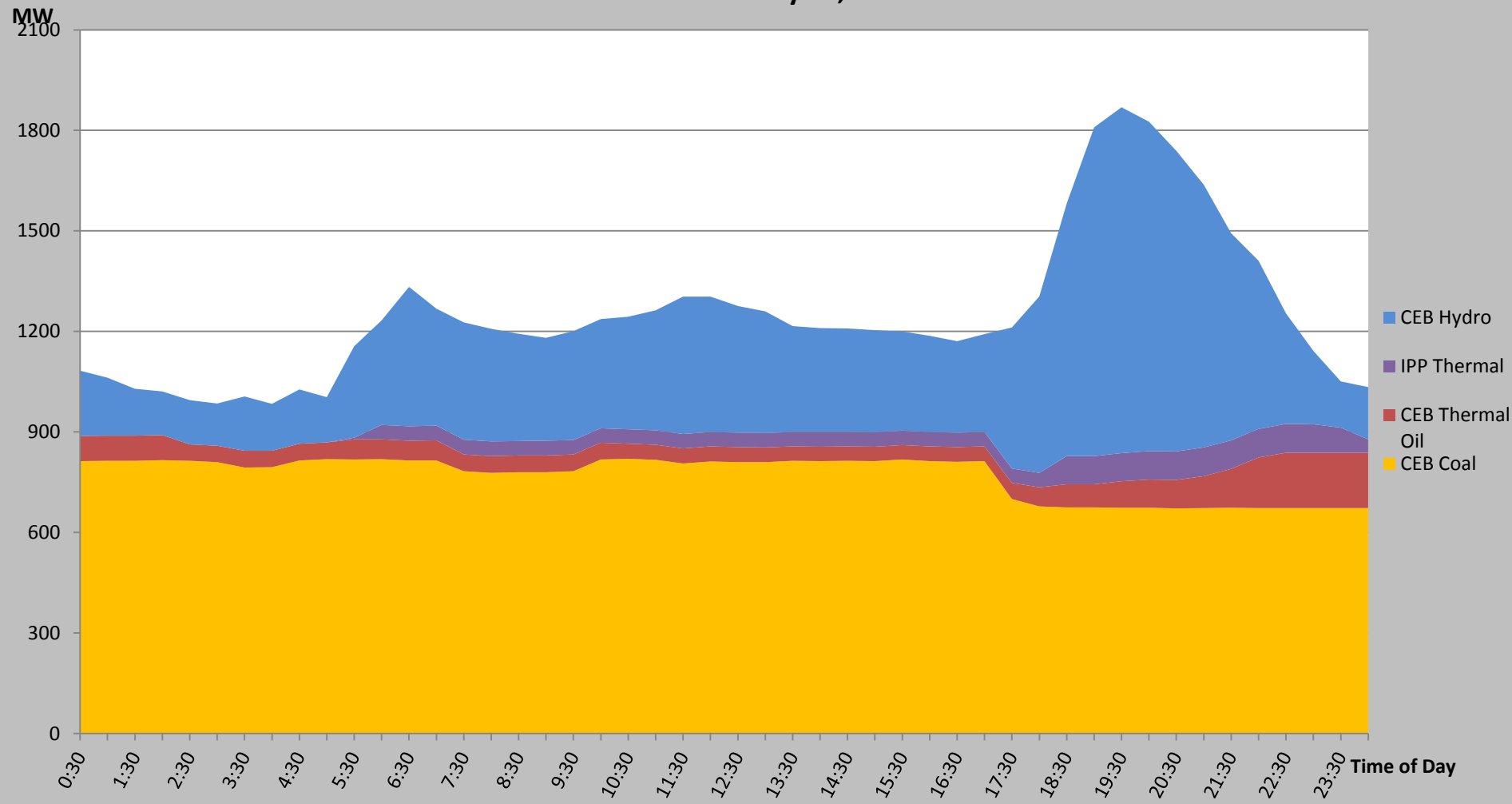


Comparison of Cumulative Dispatch from January 1 to July 25, 2016



Note: Generation from SPP Mini Hydro, Solar and Biomass is not included

Load Curve for July 24,2016



## List of Power Stations

Power Station	Capacity (MW)	Primary Fuel
<b>CEB Hydro</b>		
Victoria	210	
Ukuwela	40	
Kotmale	201	
Randenigala	122	
Rantambe	49	
Bowatenna	40	
Nilambe	3.2	
Upper Kotmale	150	
Old Laxapana	50	
New Laxapana	115	
Polpitiya	75	
Wimalasurendra	50	
Canyon	60	
Samanalawewa	120	
Kukuleganga	75	
Inginiyagala	10	
Udawalawe	6	
<b>CEB Thermal</b>		
Sapugaskanda 1	72	Heavy Fuel
Sapugaskanda 2	72	Heavy Fuel
Kelanitissa Small Gas Turbines	68	Auto Diesel
GT 7 - Kelanitissa	115	Auto Diesel
Kelanitissa CCY	165	Naptha & Diesel
Lakvijaya (Puttalam Coal)	285	Coal
Lakvijaya (Puttalam Coal) Stage II	285	Coal
Lakvijaya (Puttalam Coal) Stage III	285	Coal
Uthuru Janani	24	Heavy Fuel
Barge CEB	60	Furnace Oil
<b>Private Thermal (IPPs)</b>		
Asia Power	51	Heavy Fuel
Sojitz - Kelanitissa	163	Auto Diesel
West Coast	270	Low Sulphur Furnace oil
Northern Power	27	Auto Diesel
ACE Embilipitiya	100	Furnace Oil