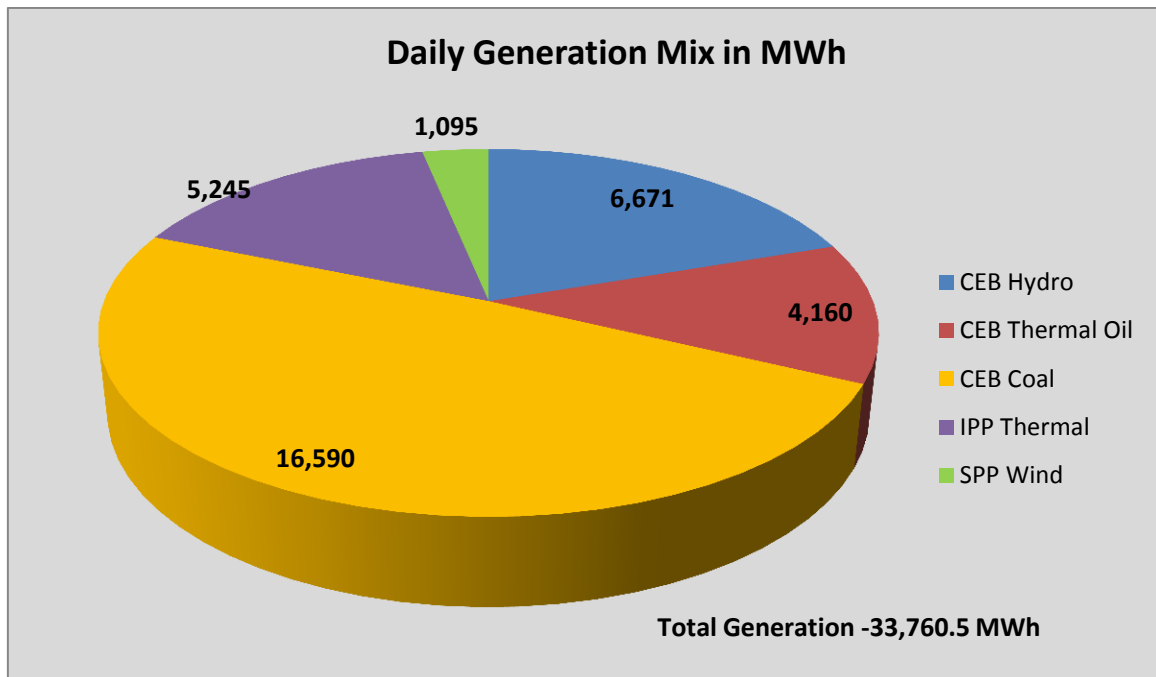


Generation and Reservoirs Statistics

August 21, 2016



PUBLIC UTILITIES COMMISSION OF SRI LANKA



Note: Generation from other SPPs (Mini Hydro, Solar and Biomass) is not included

Cumulative Dispatch- 2016

July, 2016

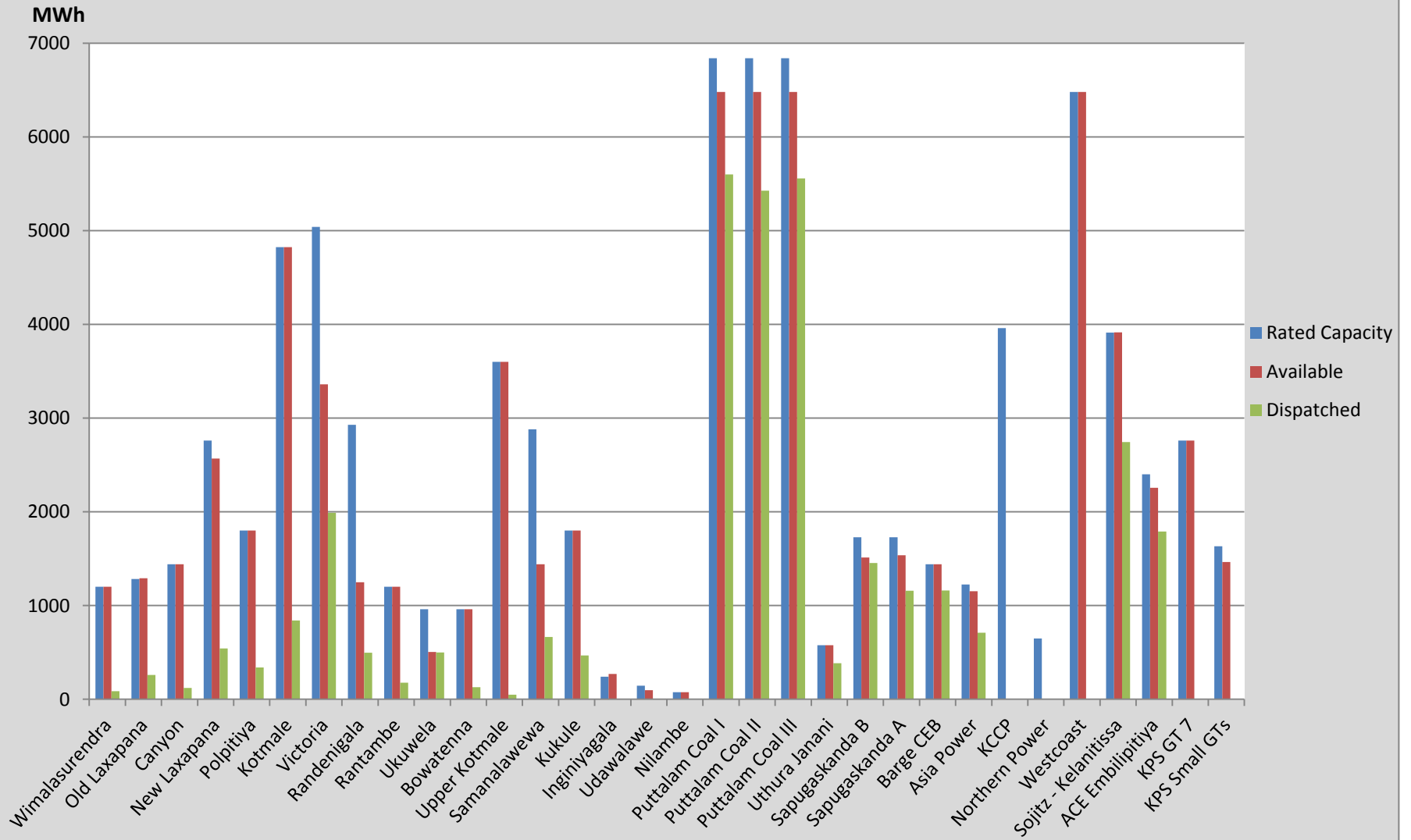
Category	Dispatch (MWh)	
CEB Hydro	174,288.0	21.84%
CEB Thermal Oil	97,530.0	12.22%
CEB Coal	378,650.0	47.45%
IPP Thermal	120,221.0	15.07%
SPP Wind	27,236.4	3.41%
Total	797,925.4	

January 1 to August 21, 2016

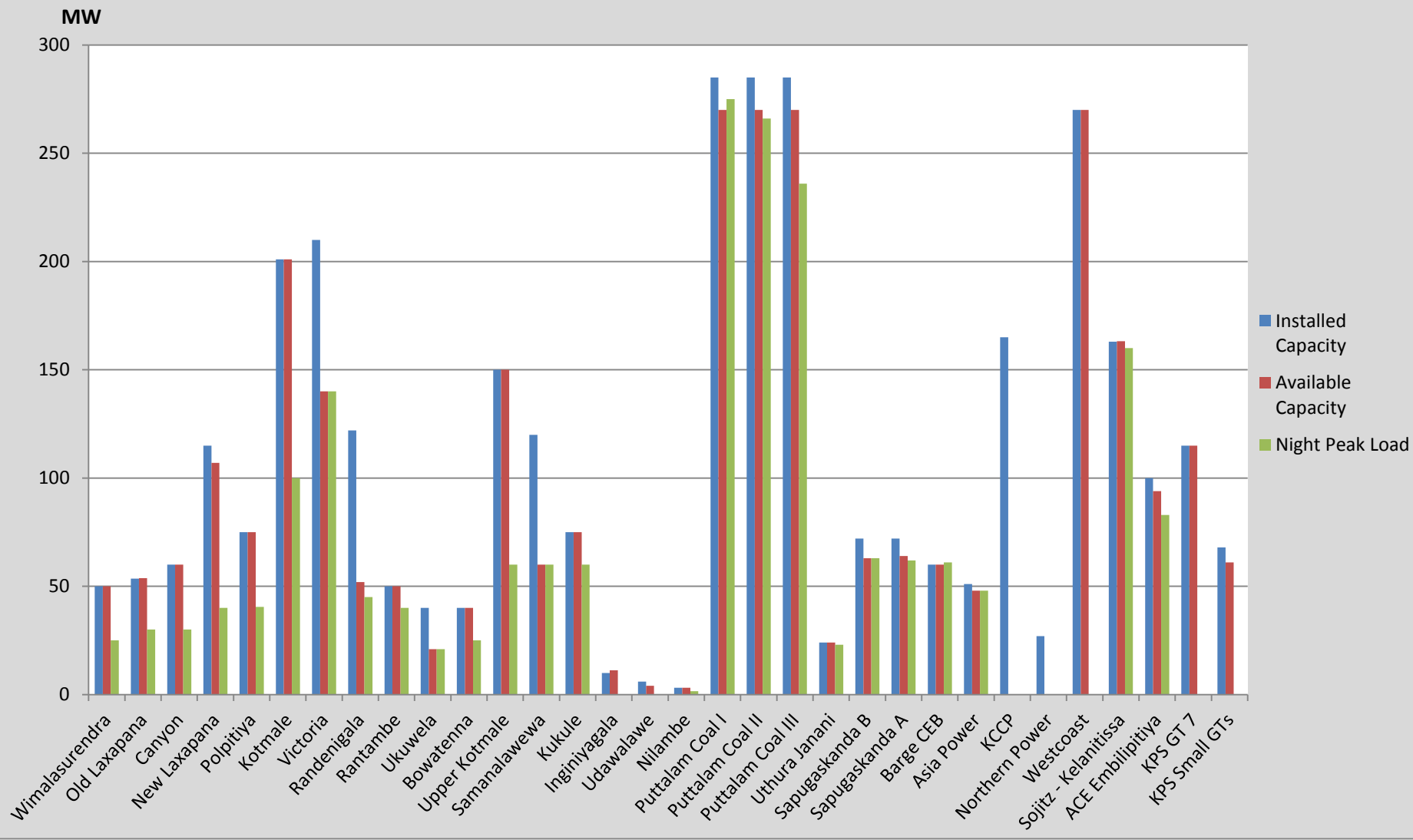
Category	Dispatch (GWh)	
CEB Hydro	2,597	29.43%
CEB Thermal Oil	1,296	14.68%
CEB Coal	3,200	36.26%
IPP Thermal	1,175	13.31%
Renewable	558	6.32%
Total	8,826	

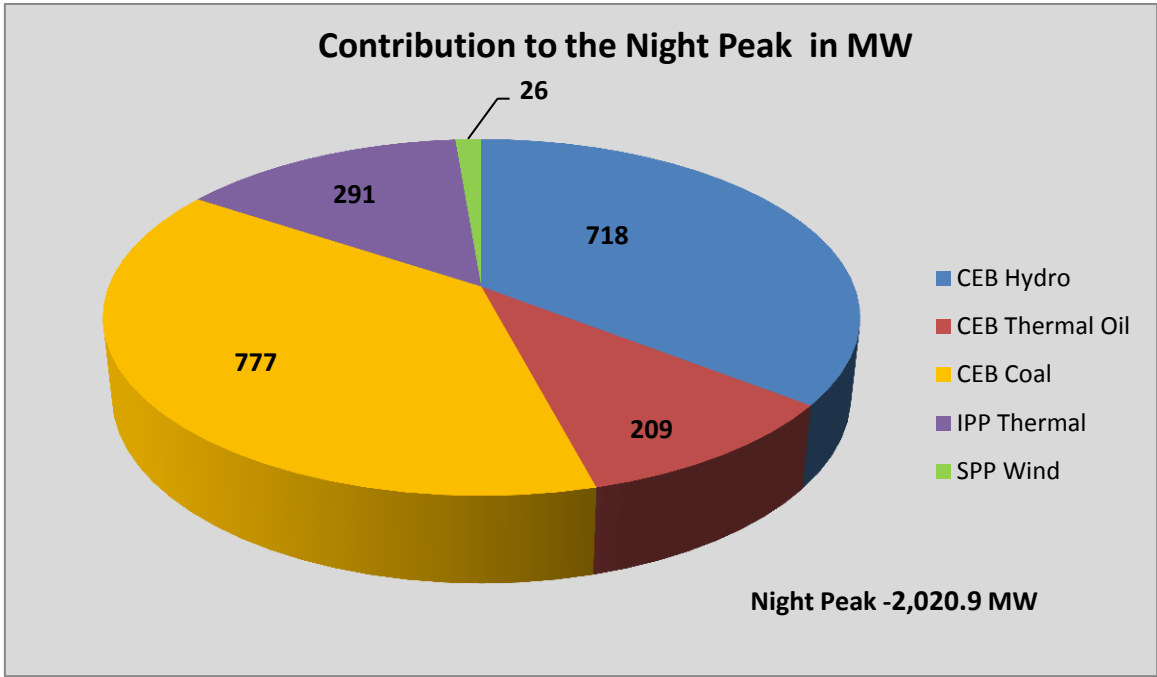
Note: Generation from Mini Hydro, Solar and Biomass power plants during June, July and August is not included in annual cumulative renewable generation figure.

Dispatch on August 21, 2016



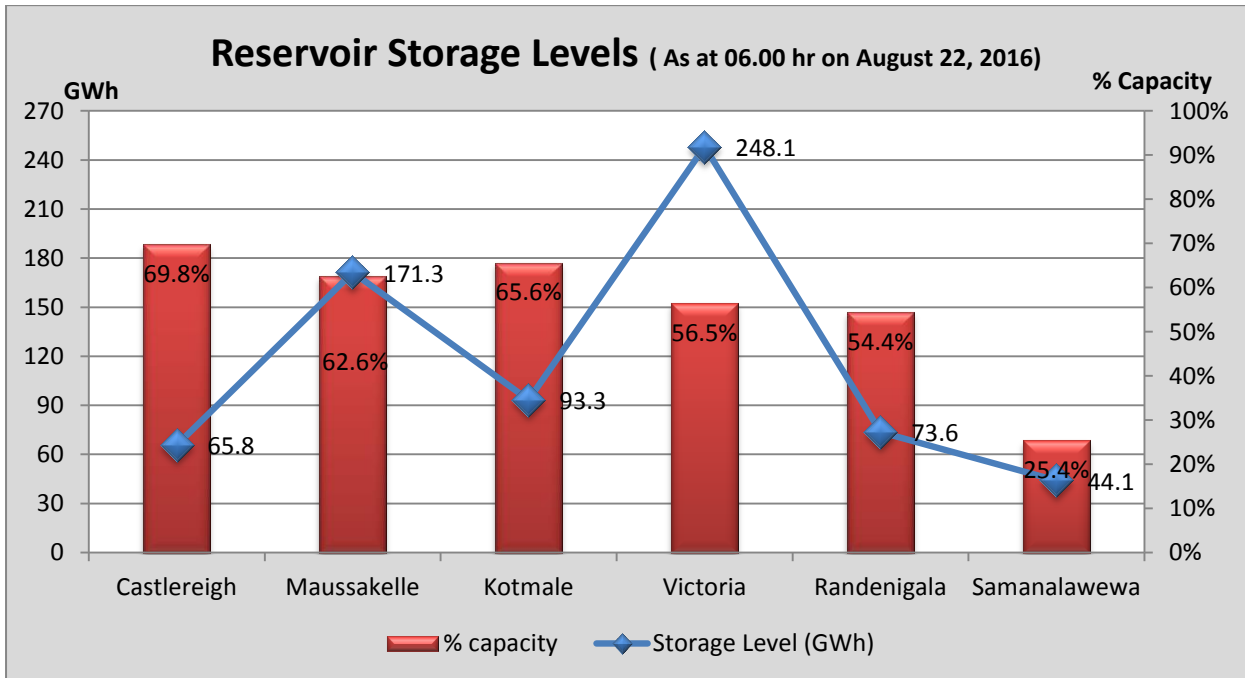
Night Peak Contribution on August 21, 2016





- Day Peak Demand –1,499.8 MW
- Minimum Recorded Demand –1,141.5 MW

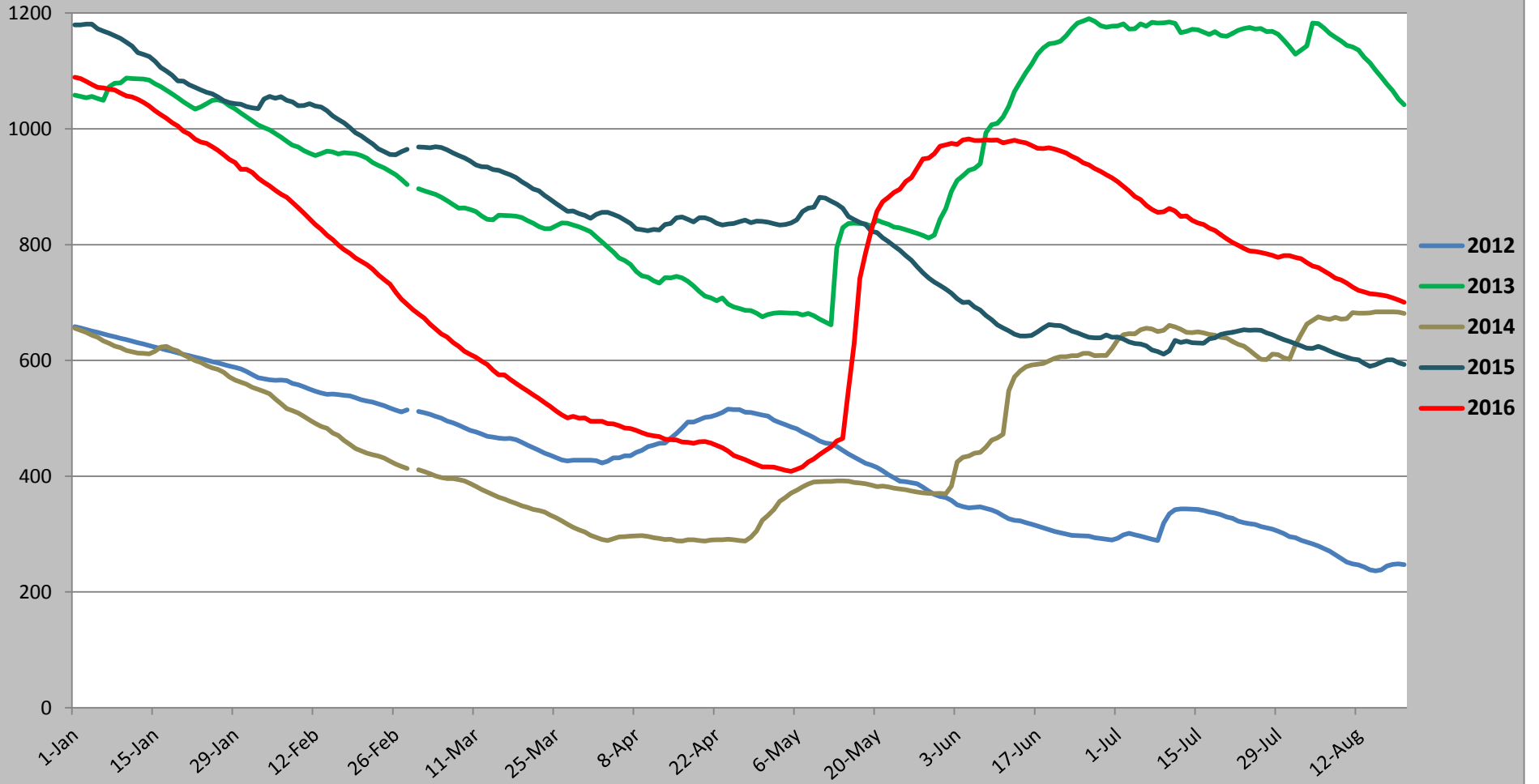
Note: Contribution from other SPPs (Mini Hydro, Solar and Biomass) is not included

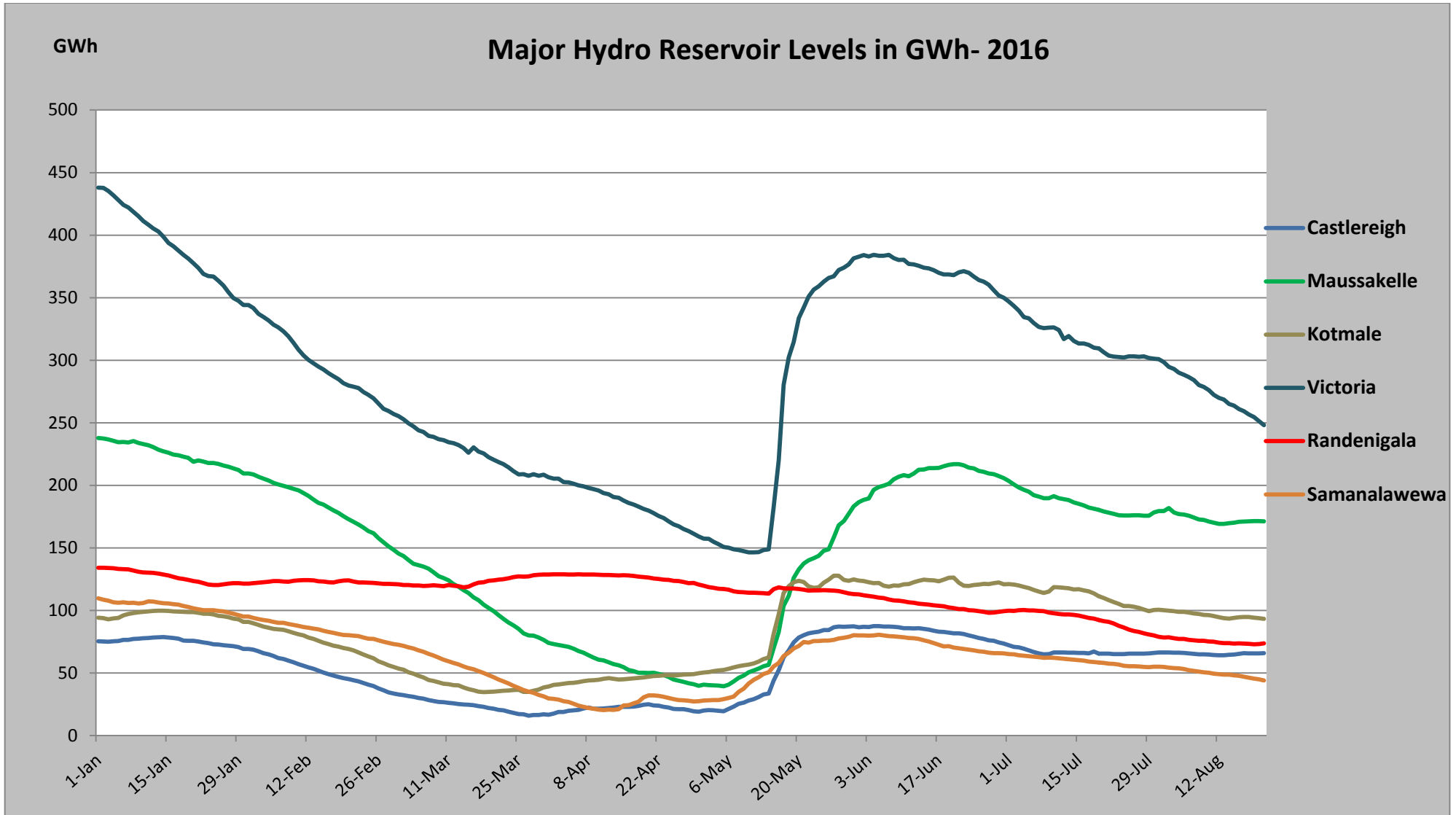


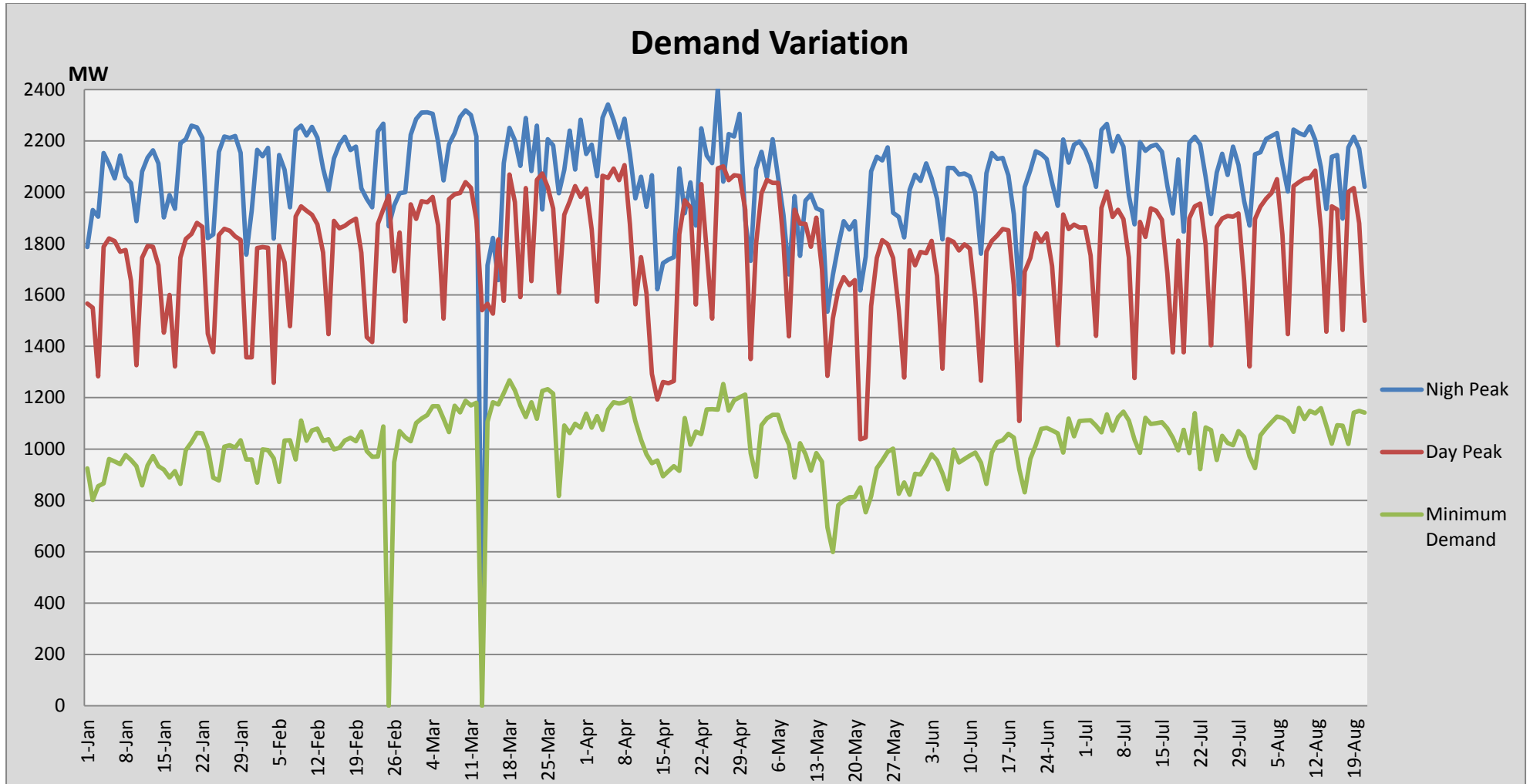
Note: Hydro Reservoir Storage Capacity as at August 22, 2016 – 696.2 GWh (55.31 %)

GWh

Comparison of Total Reservoir Storage Levels with Past Years

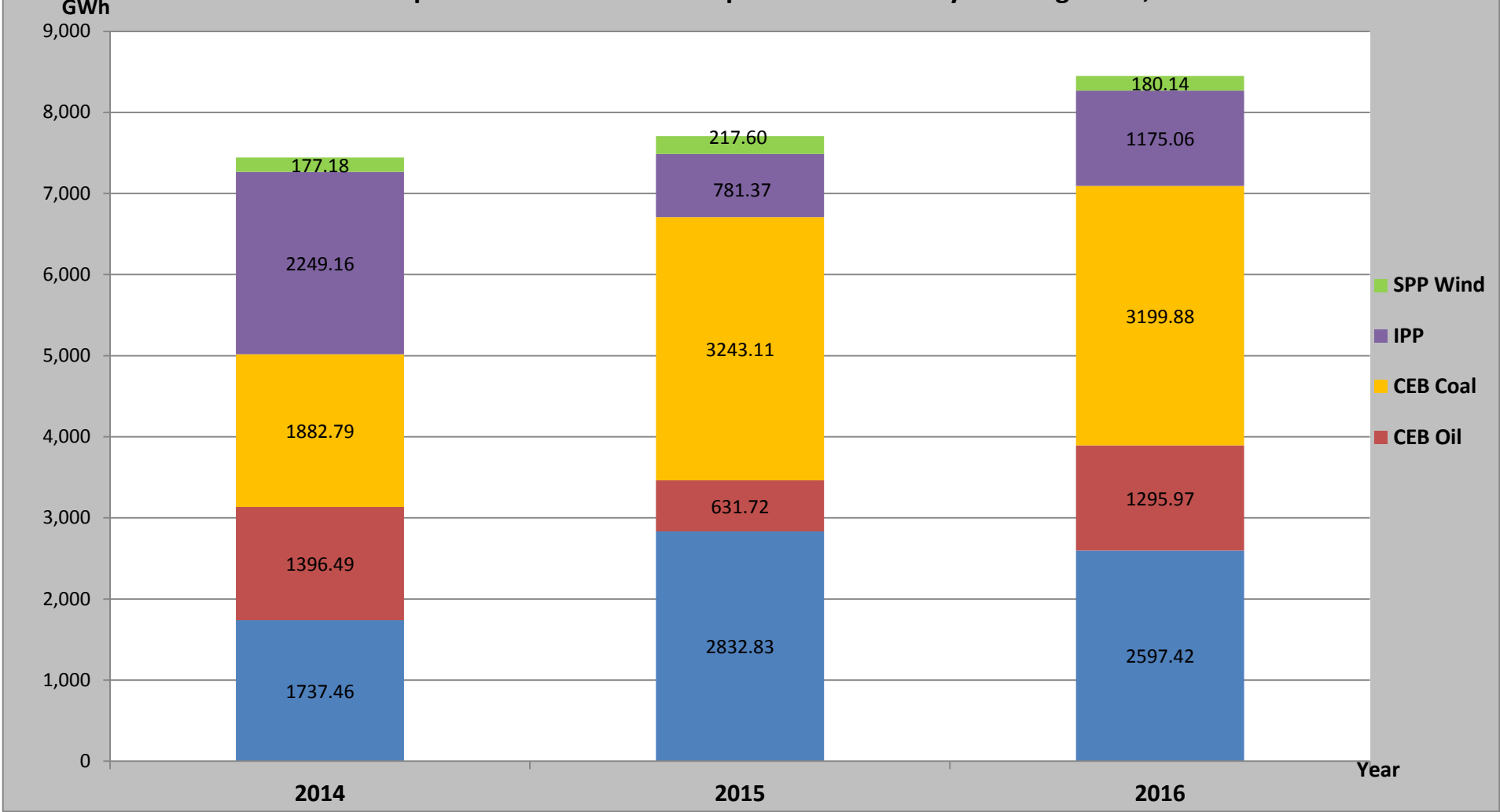






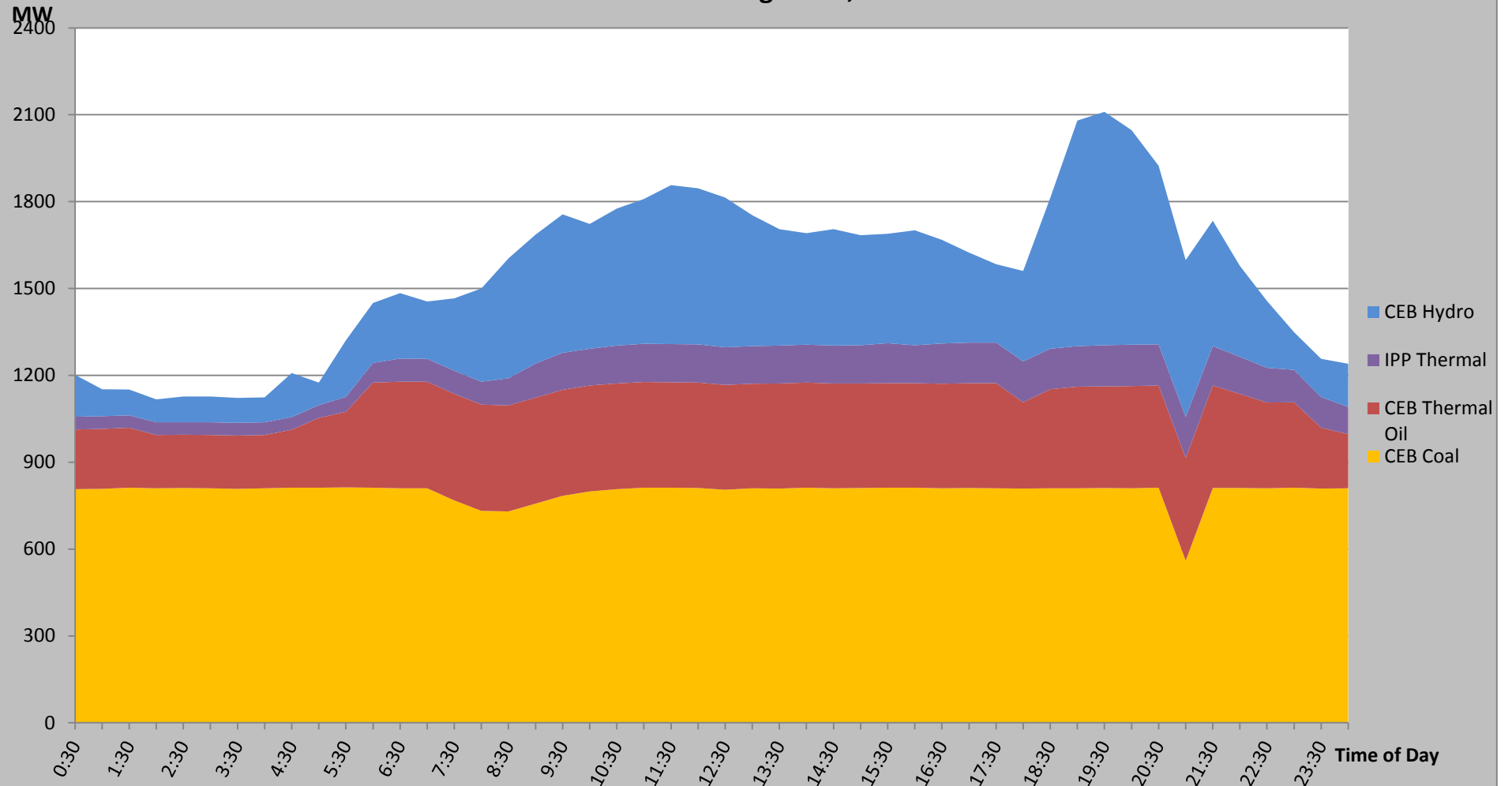
Note: Contribution from Mini Hydro, Solar and Biomass is not included

Comparison of Cumulative Dispatch from January 1 to August 21, 2016



Note: Generation from SPP Mini Hydro, Solar and Biomass is not included

Load Curve for August 20, 2016



List of Power Stations

Power Station	Capacity (MW)	Primary Fuel
CEB Hydro		
Victoria	210	
Ukuwela	40	
Kotmale	201	
Randenigala	122	
Rantambe	49	
Bowatenna	40	
Nilambe	3.2	
Upper Kotmale	150	
Old Laxapana	50	
New Laxapana	115	
Polpitiya	75	
Wimalasurendra	50	
Canyon	60	
Samanalawewa	120	
Kukuleganga	75	
Inginiyagala	10	
Udawalawe	6	
CEB Thermal		
Sapugaskanda 1	72	Heavy Fuel
Sapugaskanda 2	72	Heavy Fuel
Kelanitissa Small Gas Turbines	68	Auto Diesel
GT 7 - Kelanitissa	115	Auto Diesel
Kelanitissa CCY	165	Naptha & Diesel
Lakvijaya (Puttalam Coal)	285	Coal
Lakvijaya (Puttalam Coal) Stage II	285	Coal
Lakvijaya (Puttalam Coal) Stage III	285	Coal
Uthuru Janani	24	Heavy Fuel
Barge CEB	60	Furnace Oil
Private Thermal (IPPs)		
Asia Power	51	Heavy Fuel
Sojitz - Kelanitissa	163	Auto Diesel
West Coast	270	Low Sulphur Furnace oil
Northern Power	27	Auto Diesel
ACE Embilipitiya	100	Furnace Oil