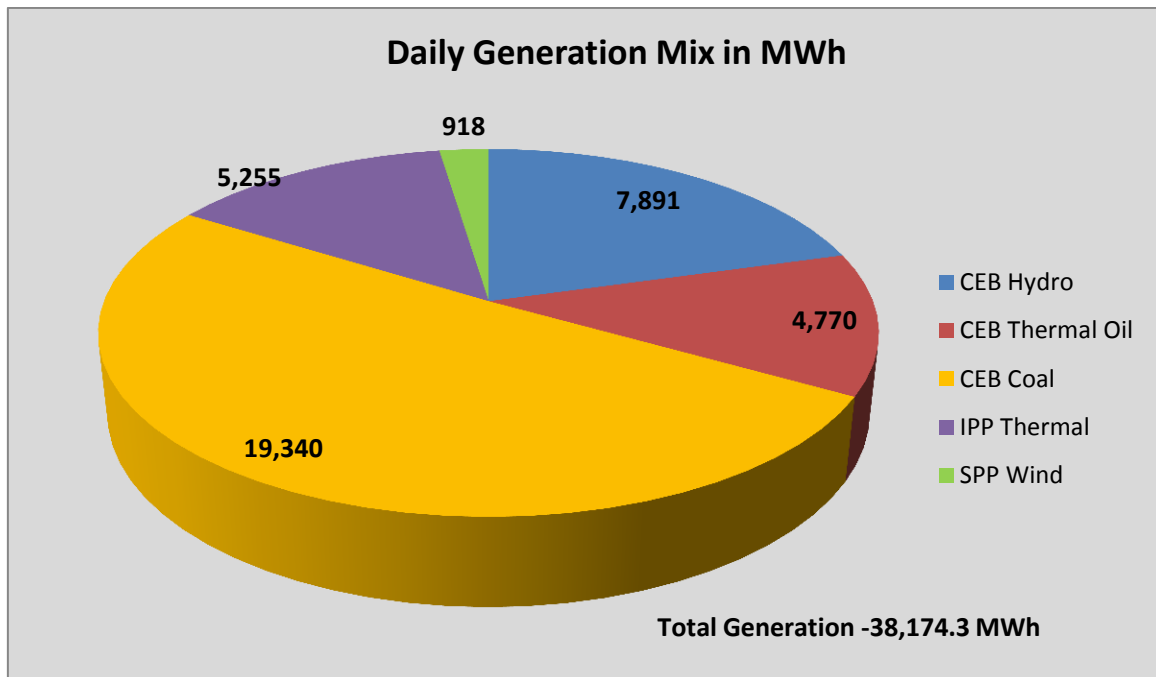


# **Generation and Reservoirs Statistics**

August 20, 2016



PUBLIC UTILITIES COMMISSION OF SRI LANKA



**Note:** Generation from other SPPs (Mini Hydro, Solar and Biomass) is not included

### Cumulative Dispatch- 2016

**July, 2016**

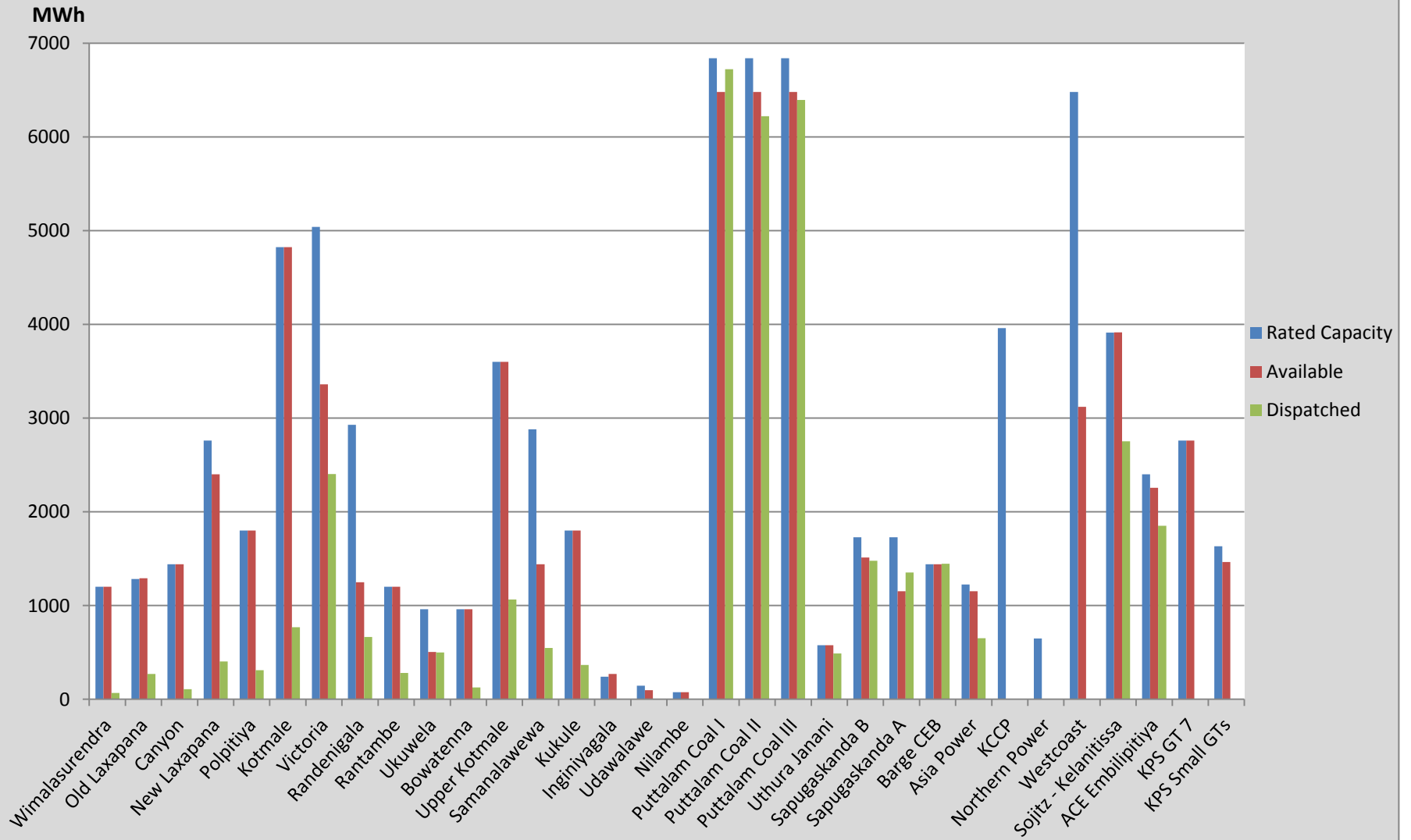
Category	Dispatch (MWh)	
CEB Hydro	167,617.0	21.93%
CEB Thermal Oil	93,370.0	12.22%
CEB Coal	362,060.0	47.38%
IPP Thermal	114,976.0	15.05%
SPP Wind	26,141.9	3.42%
<b>Total</b>	<b>764,164.9</b>	

**January 1 to August 20, 2016**

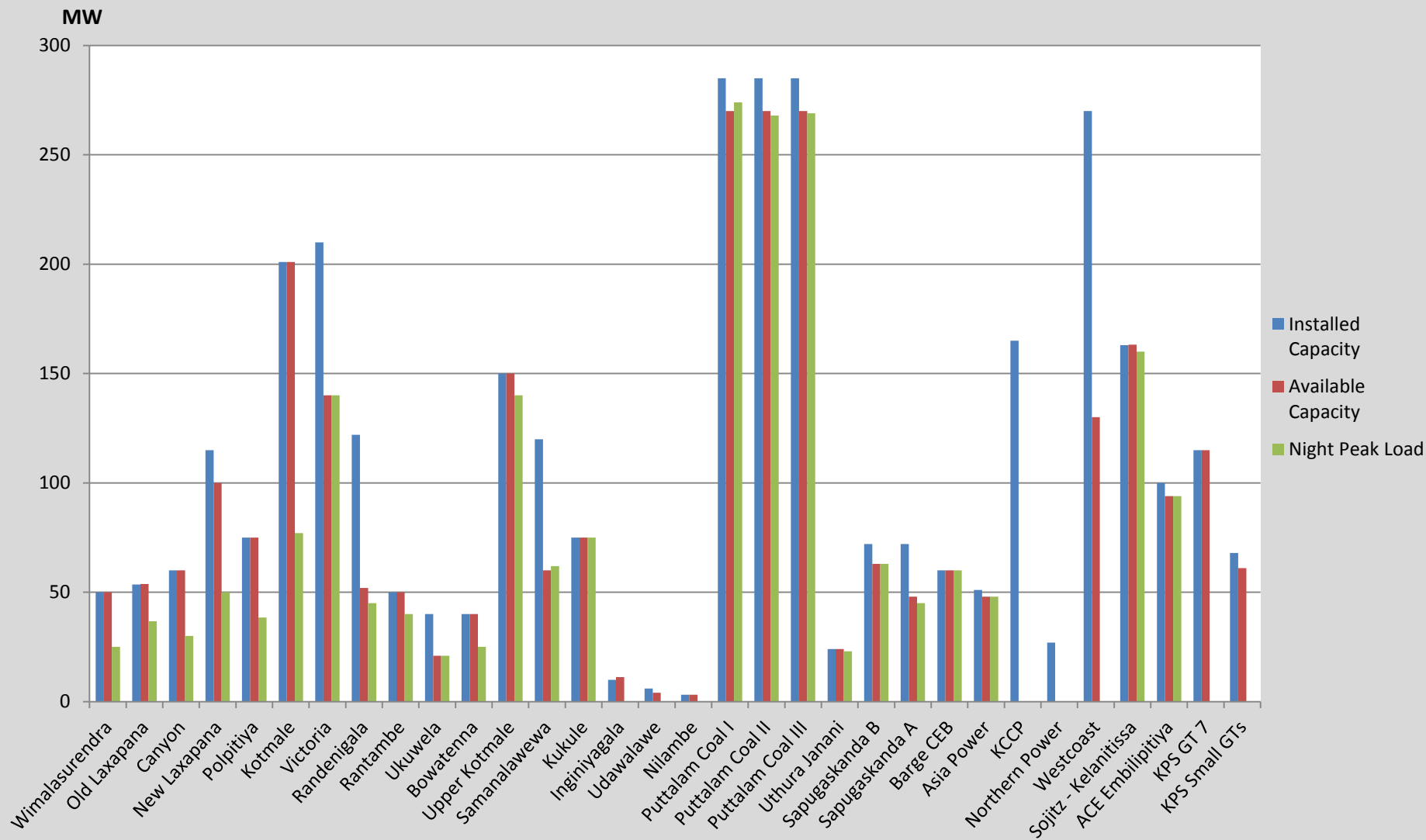
Category	Dispatch (GWh)	
CEB Hydro	2,591	29.47%
CEB Thermal Oil	1,292	14.69%
CEB Coal	3,183	36.21%
IPP Thermal	1,170	13.31%
Renewable	557	6.33%
<b>Total</b>	<b>8,792</b>	

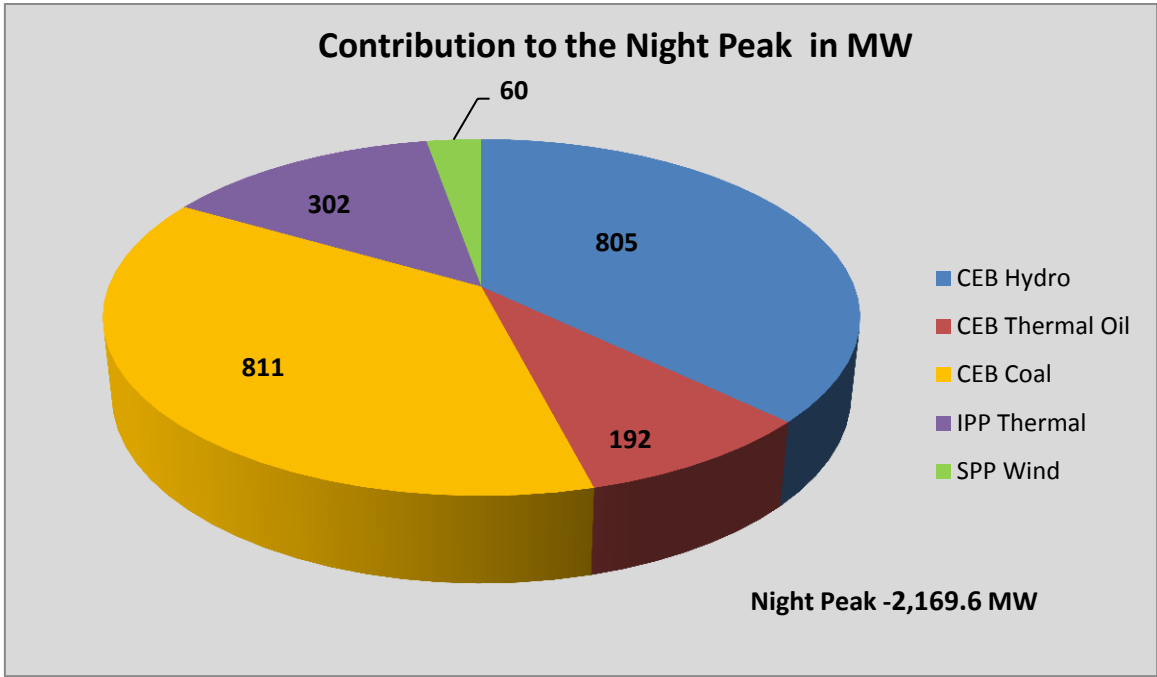
**Note:** Generation from Mini Hydro, Solar and Biomass power plants during June, July and August is not included in annual cumulative renewable generation figure.

### Dispatch on August 20, 2016



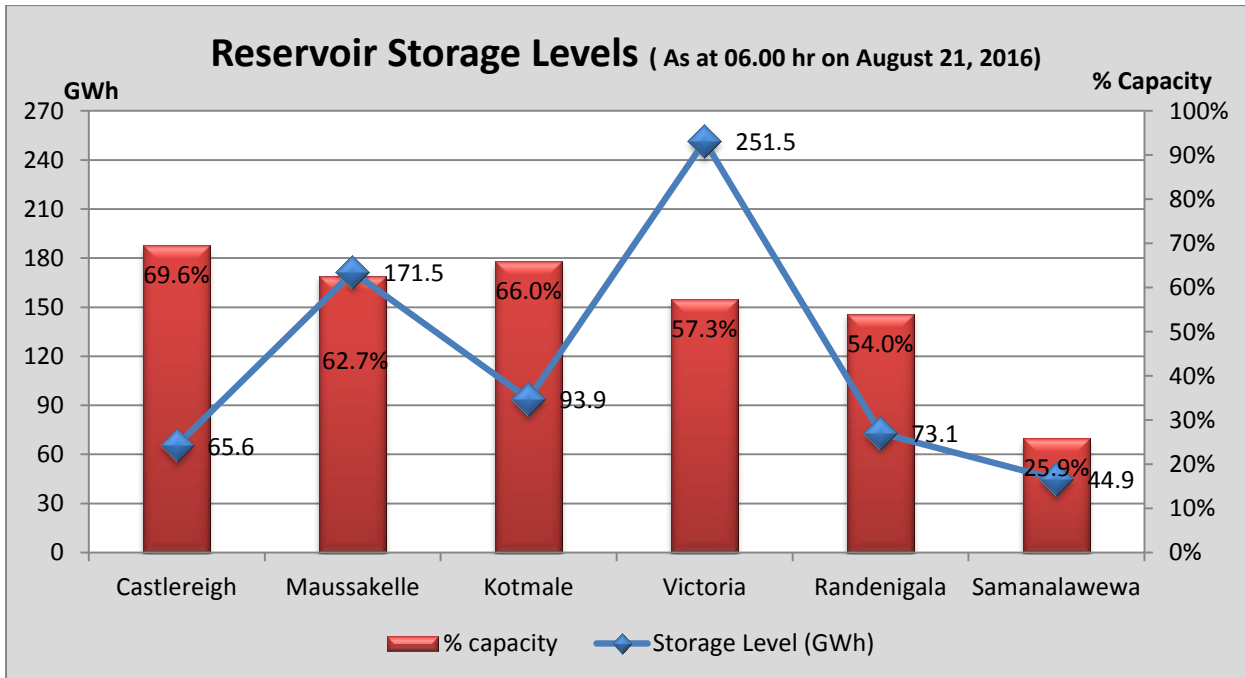
### Night Peak Contribution on August 20, 2016





- Day Peak Demand –1,879.3 MW
- Minimum Recorded Demand –1,148.4 MW

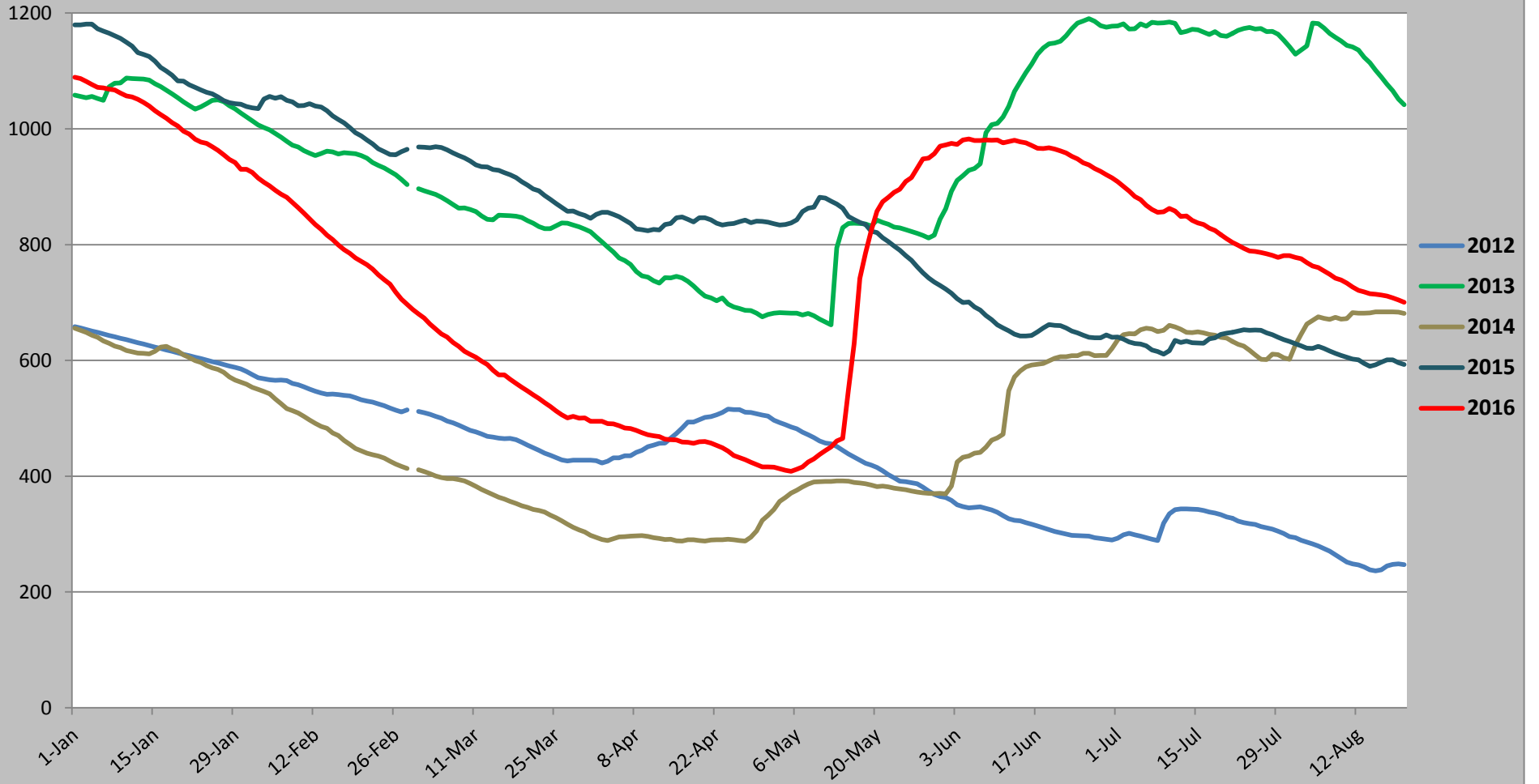
*Note: Contribution from other SPPs (Mini Hydro, Solar and Biomass) is not included*



**Note:** Hydro Reservoir Storage Capacity as at August 21, 2016 – 700.5 GWh (55.66 %)

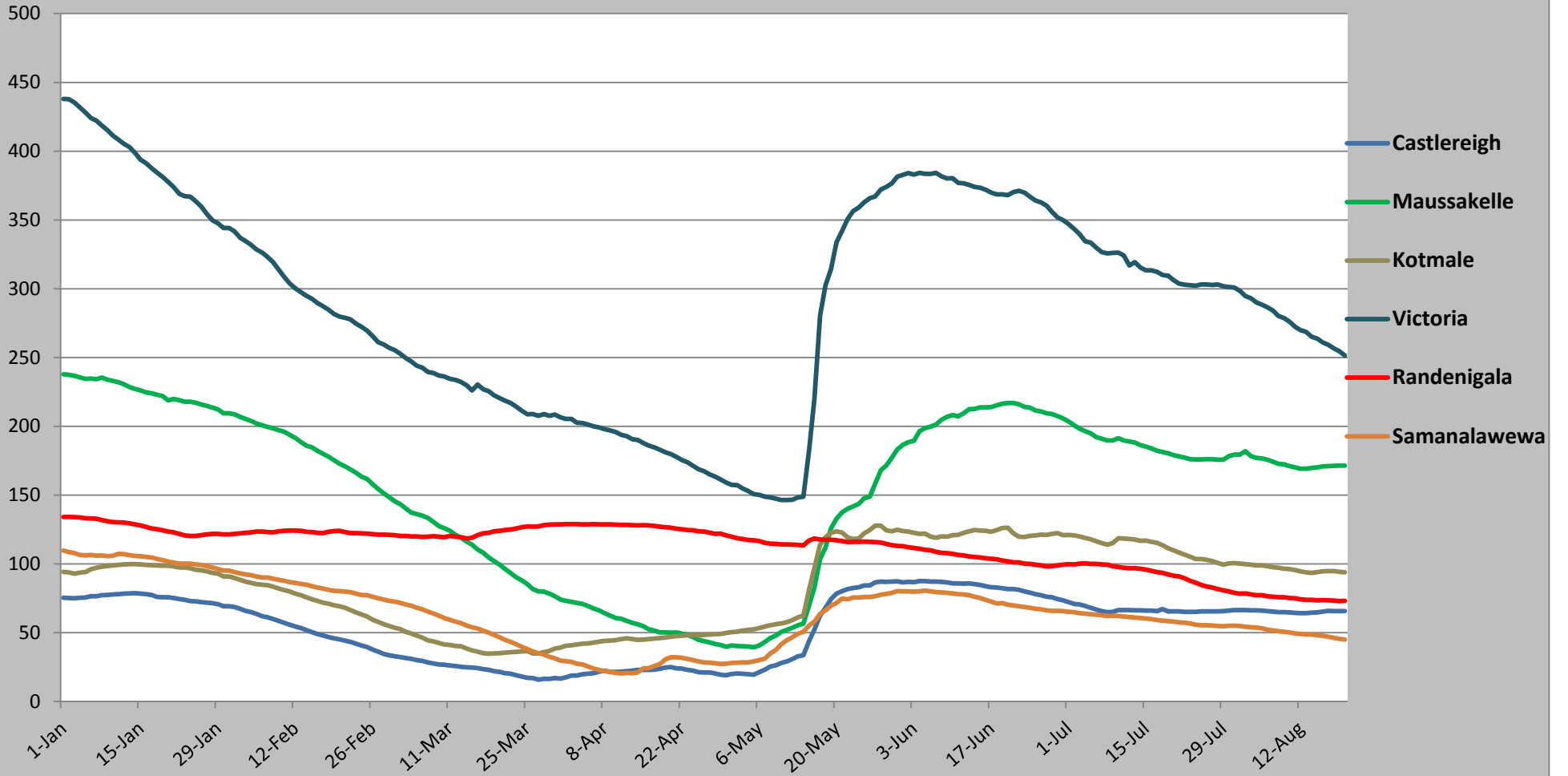
GWh

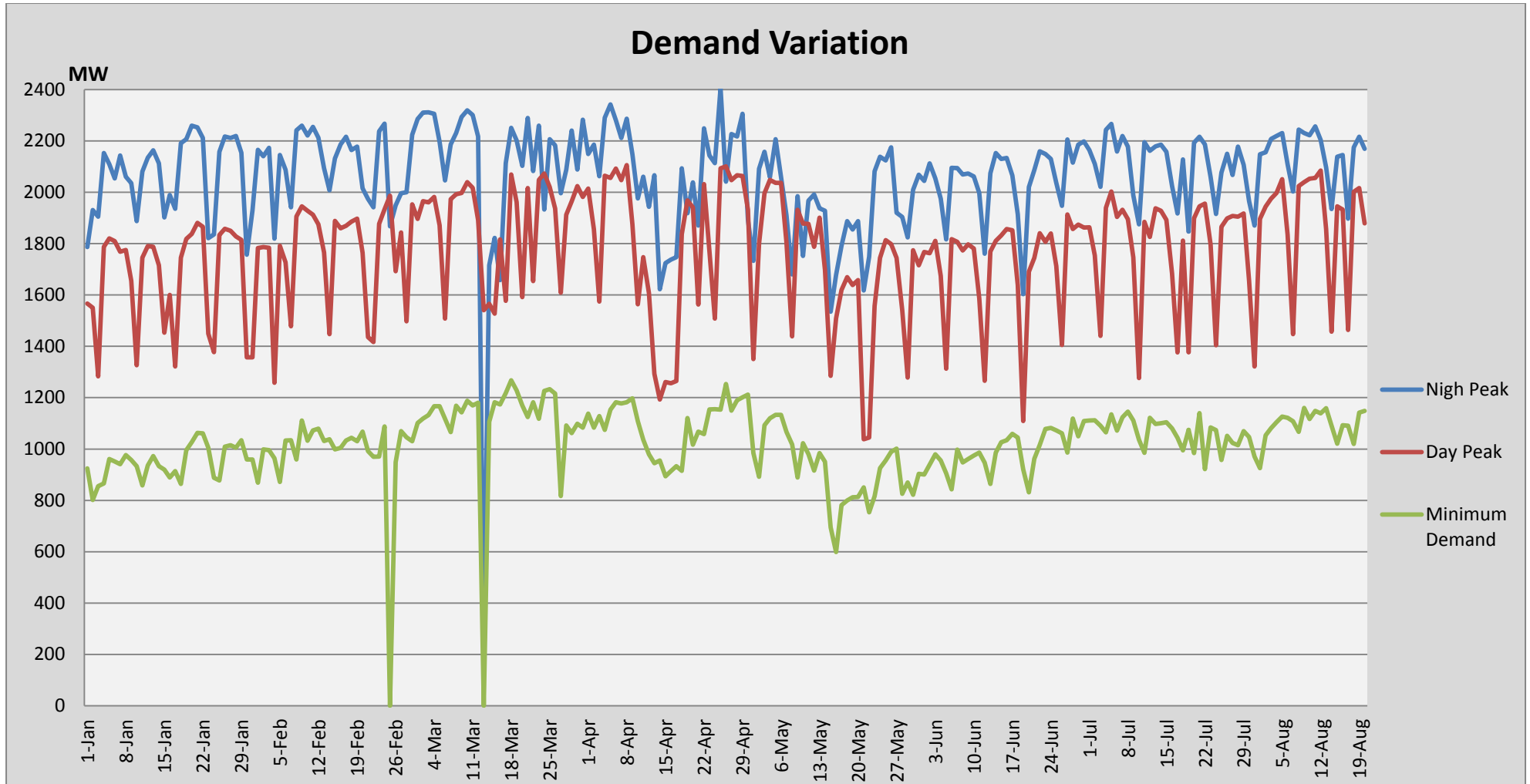
### Comparison of Total Reservoir Storage Levels with Past Years



### Major Hydro Reservoir Levels in GWh- 2016

GWh

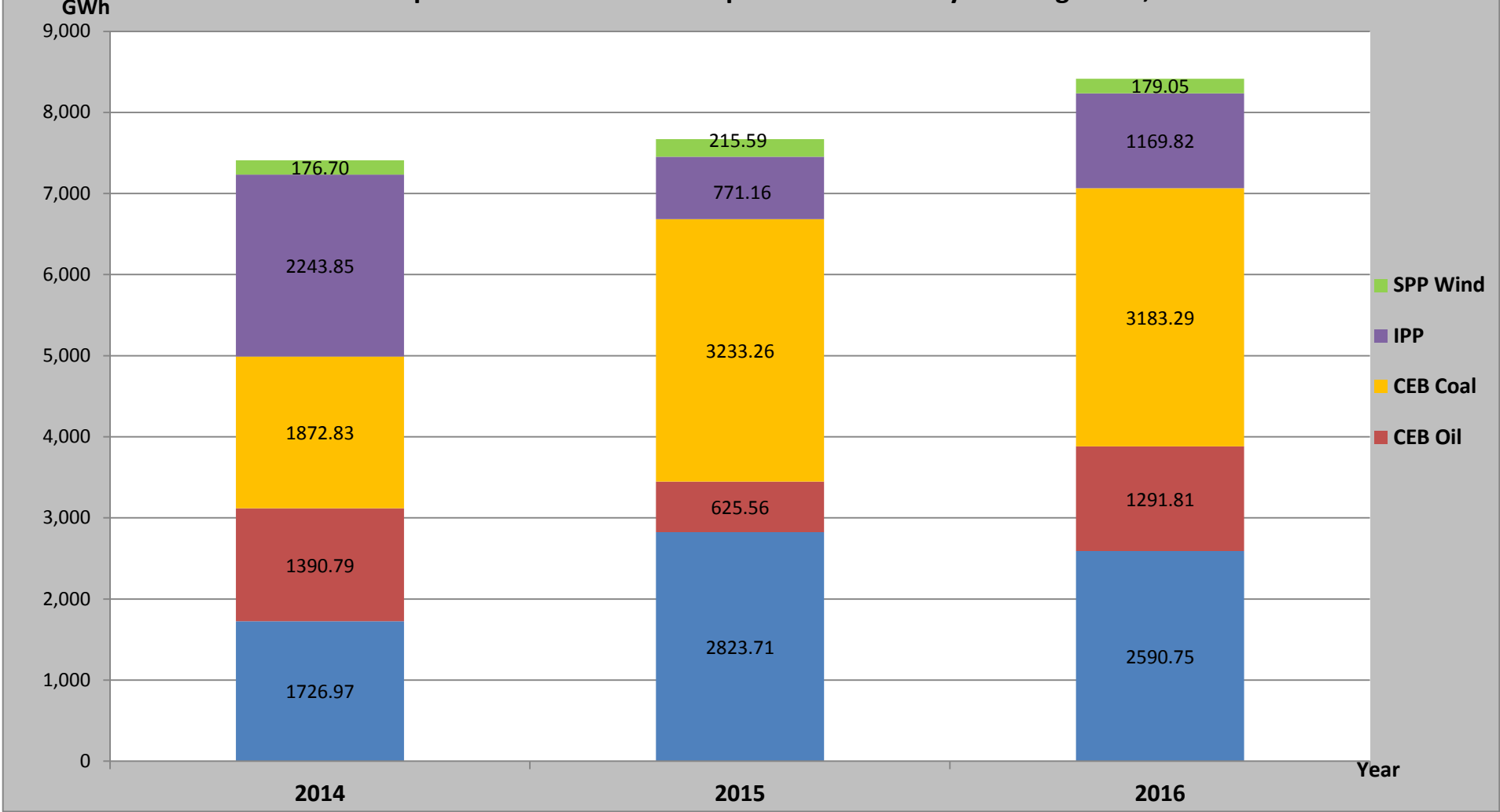




**Note:** Contribution from Mini Hydro, Solar and Biomass is not included

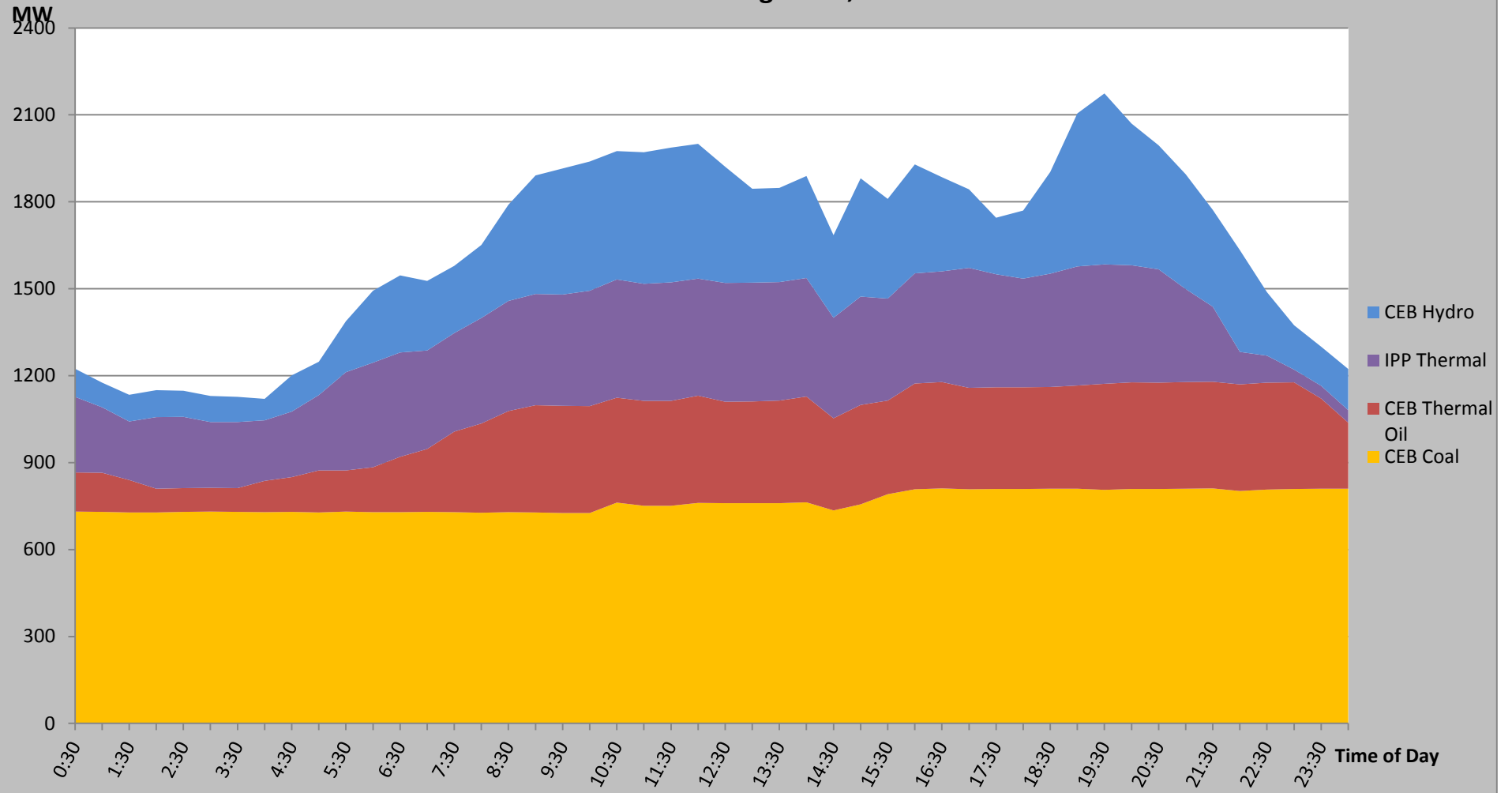


Comparison of Cumulative Dispatch from January 1 to August 20, 2016



Note: Generation from SPP Mini Hydro, Solar and Biomass is not included

Load Curve for August 19,2016



## List of Power Stations

Power Station	Capacity (MW)	Primary Fuel
<b>CEB Hydro</b>		
Victoria	210	
Ukuwela	40	
Kotmale	201	
Randenigala	122	
Rantambe	49	
Bowatenna	40	
Nilambe	3.2	
Upper Kotmale	150	
Old Laxapana	50	
New Laxapana	115	
Polpitiya	75	
Wimalasurendra	50	
Canyon	60	
Samanalawewa	120	
Kukuleganga	75	
Inginiyagala	10	
Udawalawe	6	
<b>CEB Thermal</b>		
Sapugaskanda 1	72	Heavy Fuel
Sapugaskanda 2	72	Heavy Fuel
Kelanitissa Small Gas Turbines	68	Auto Diesel
GT 7 - Kelanitissa	115	Auto Diesel
Kelanitissa CCY	165	Naptha & Diesel
Lakvijaya (Puttalam Coal)	285	Coal
Lakvijaya (Puttalam Coal) Stage II	285	Coal
Lakvijaya (Puttalam Coal) Stage III	285	Coal
Uthuru Janani	24	Heavy Fuel
Barge CEB	60	Furnace Oil
<b>Private Thermal (IPPs)</b>		
Asia Power	51	Heavy Fuel
Sojitz - Kelanitissa	163	Auto Diesel
West Coast	270	Low Sulphur Furnace oil
Northern Power	27	Auto Diesel
ACE Embilipitiya	100	Furnace Oil