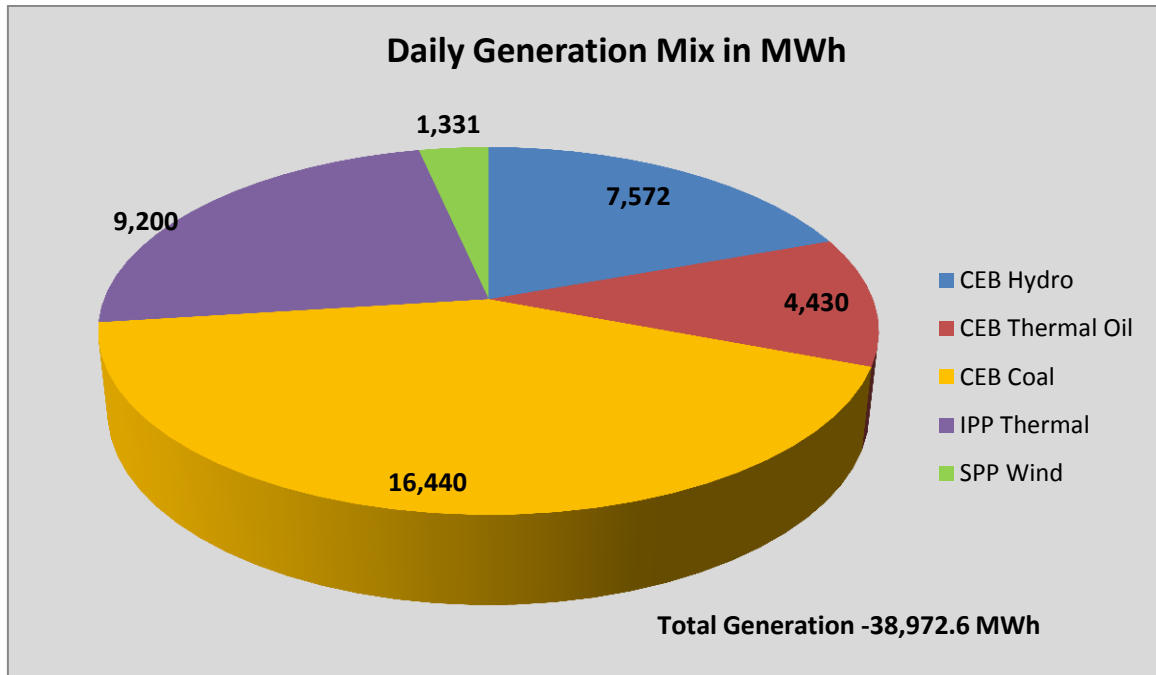


# **Generation and Reservoirs Statistics**

August 18, 2016



PUBLIC UTILITIES COMMISSION OF SRI LANKA



**Note:** Generation from other SPPs (Mini Hydro, Solar and Biomass) is not included

### Cumulative Dispatch- 2016

**July, 2016**

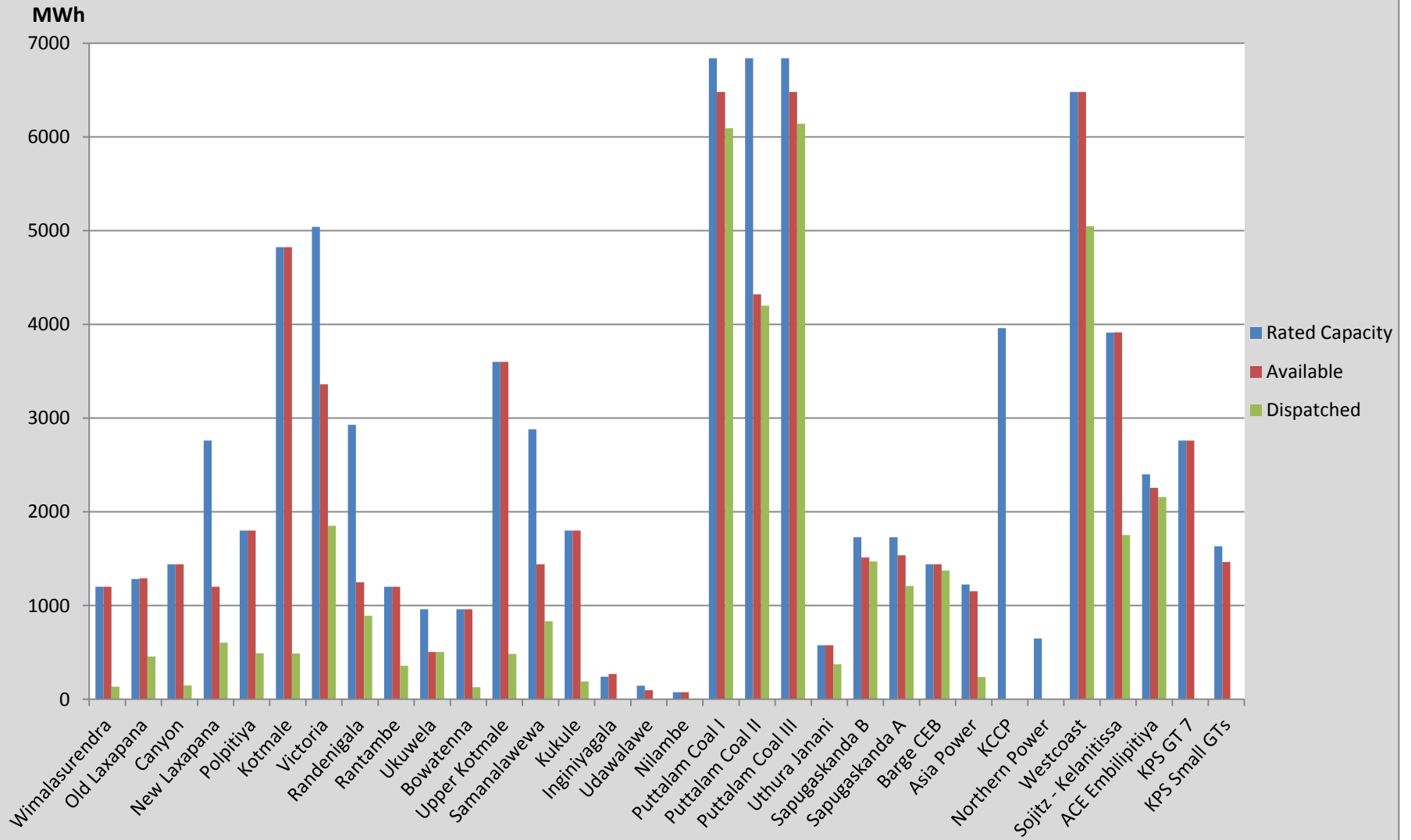
Category	Dispatch (MWh)	
CEB Hydro	152,981.0	22.30%
CEB Thermal Oil	84,460.0	12.31%
CEB Coal	324,570.0	47.31%
IPP Thermal	99,426.0	14.49%
SPP Wind	24,676.3	3.60%
<b>Total</b>	<b>686,113.3</b>	

**January 1 to August 18, 2016**

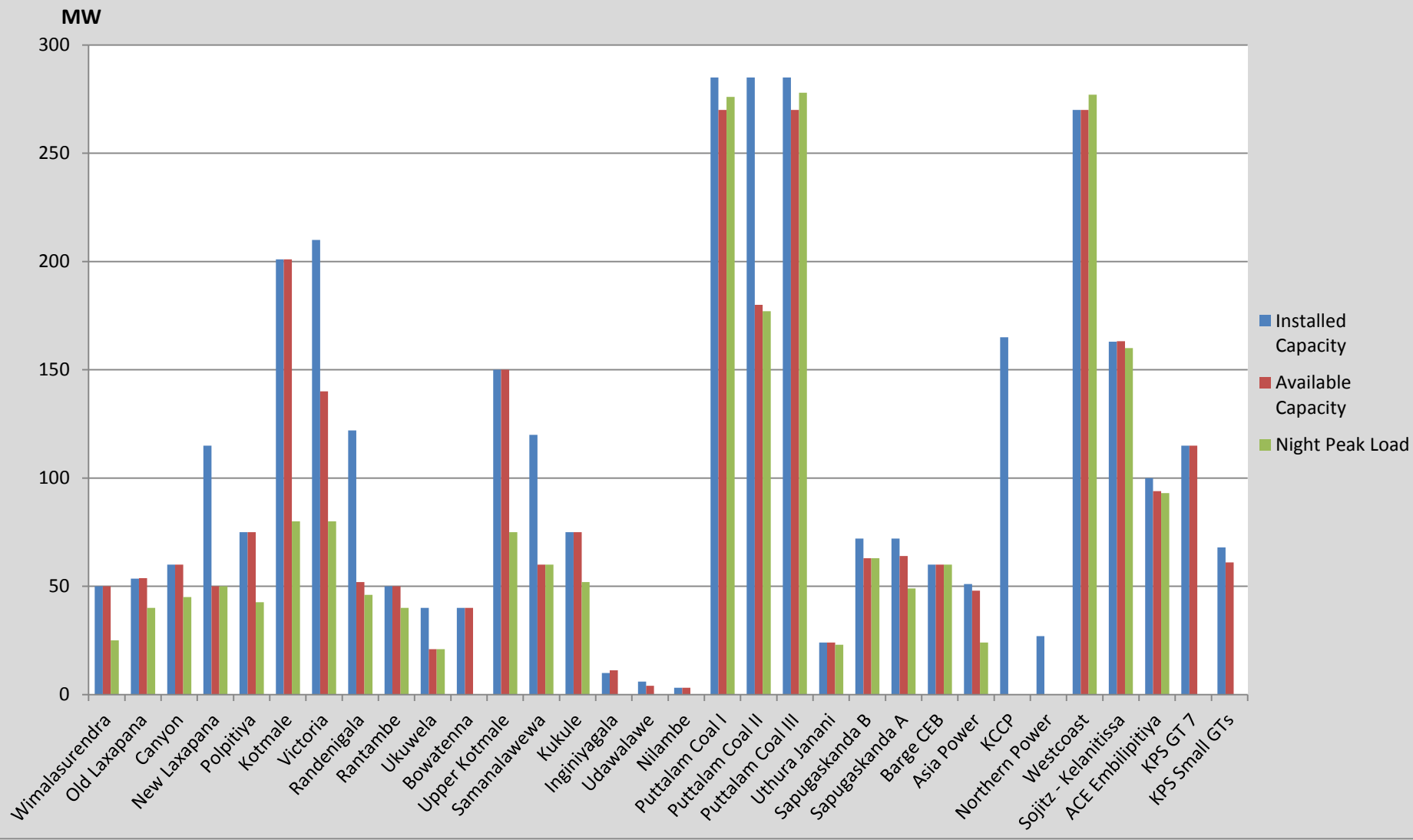
Category	Dispatch (GWh)	
CEB Hydro	2,576	29.56%
CEB Thermal Oil	1,283	14.72%
CEB Coal	3,146	36.10%
IPP Thermal	1,154	13.25%
Renewable	555	6.37%
<b>Total</b>	<b>8,714</b>	

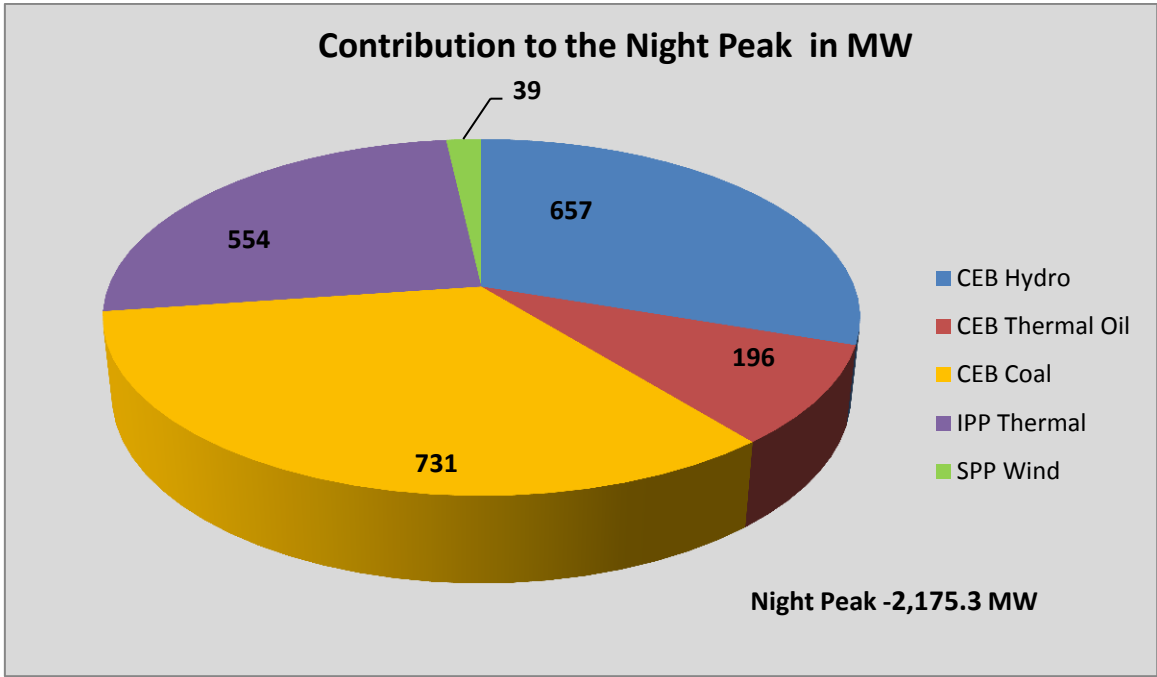
**Note:** Generation from Mini Hydro, Solar and Biomass power plants during June, July and August is not included in annual cumulative renewable generation figure.

### Dispatch on August 18, 2016



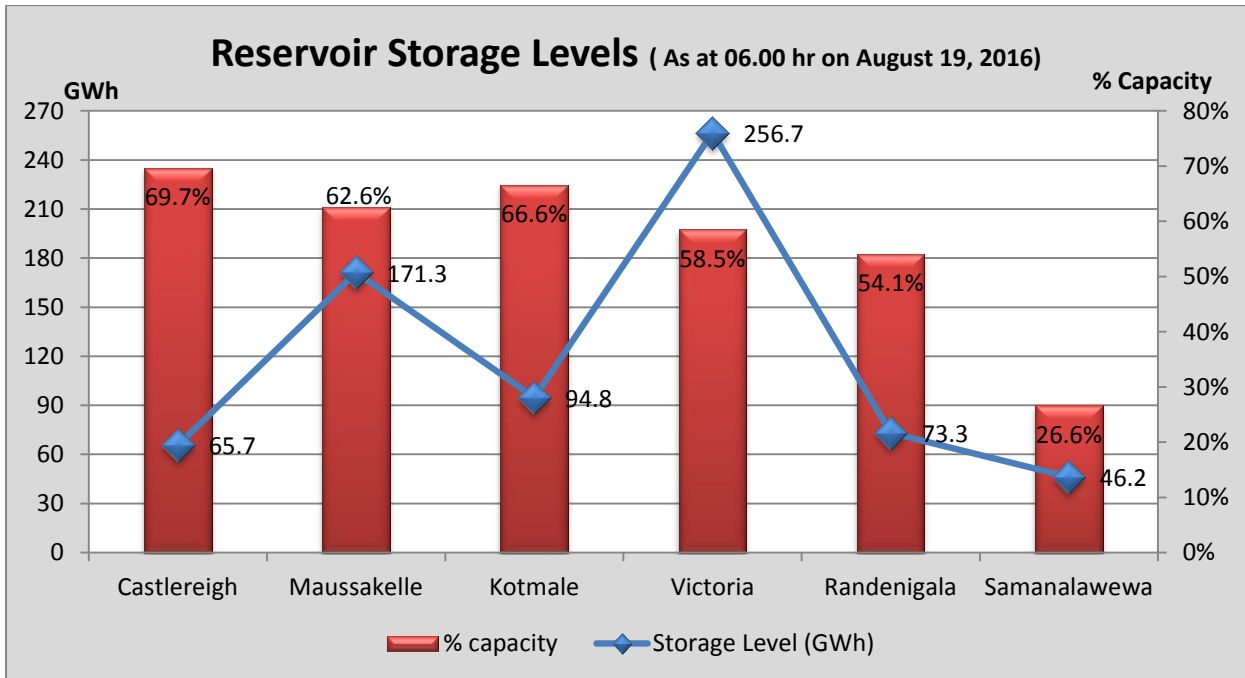
### Night Peak Contribution on August 18, 2016





- Day Peak Demand –2,002.3 MW
- Minimum Recorded Demand –1,019.7 MW

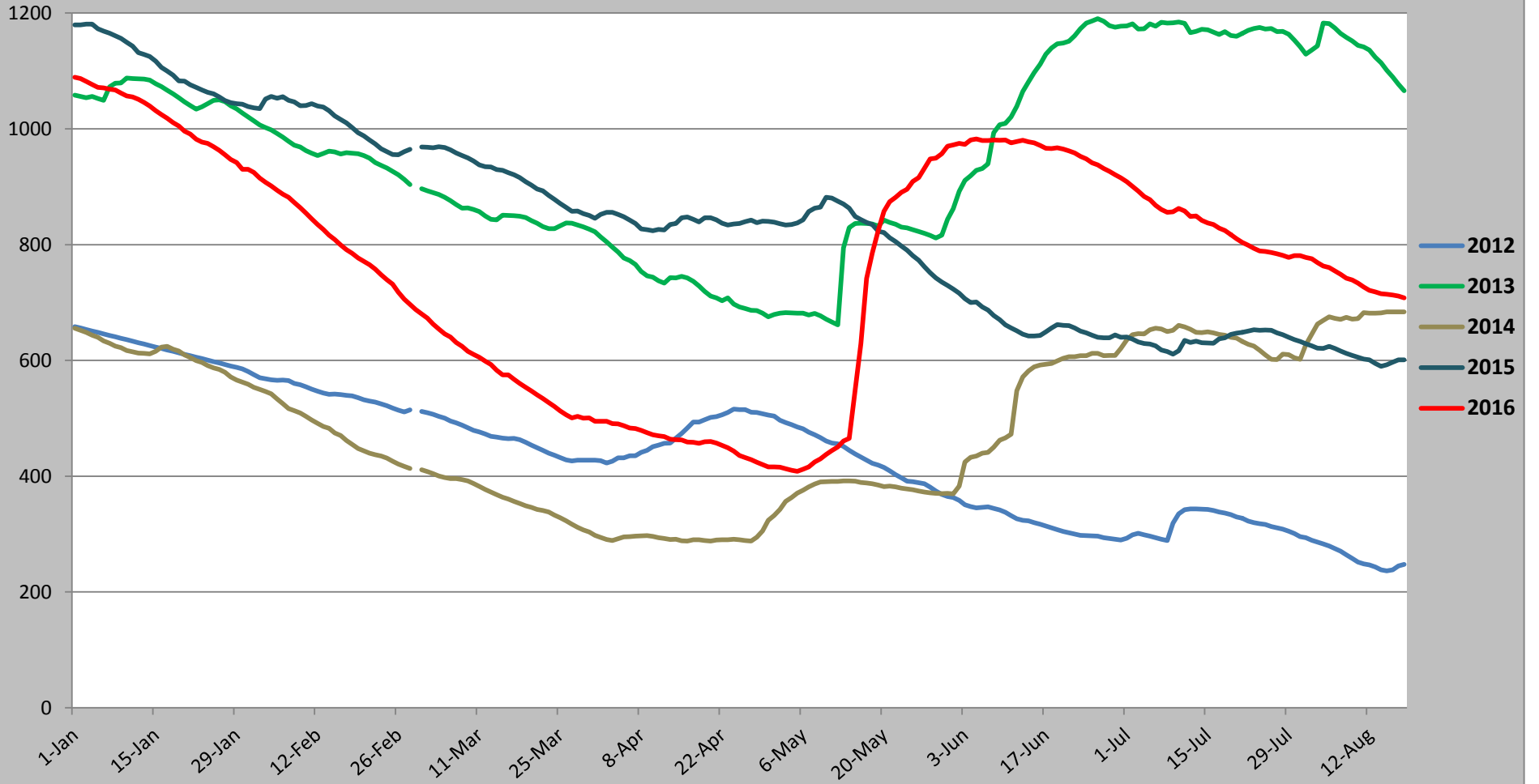
*Note: Contribution from other SPPs (Mini Hydro, Solar and Biomass) is not included*

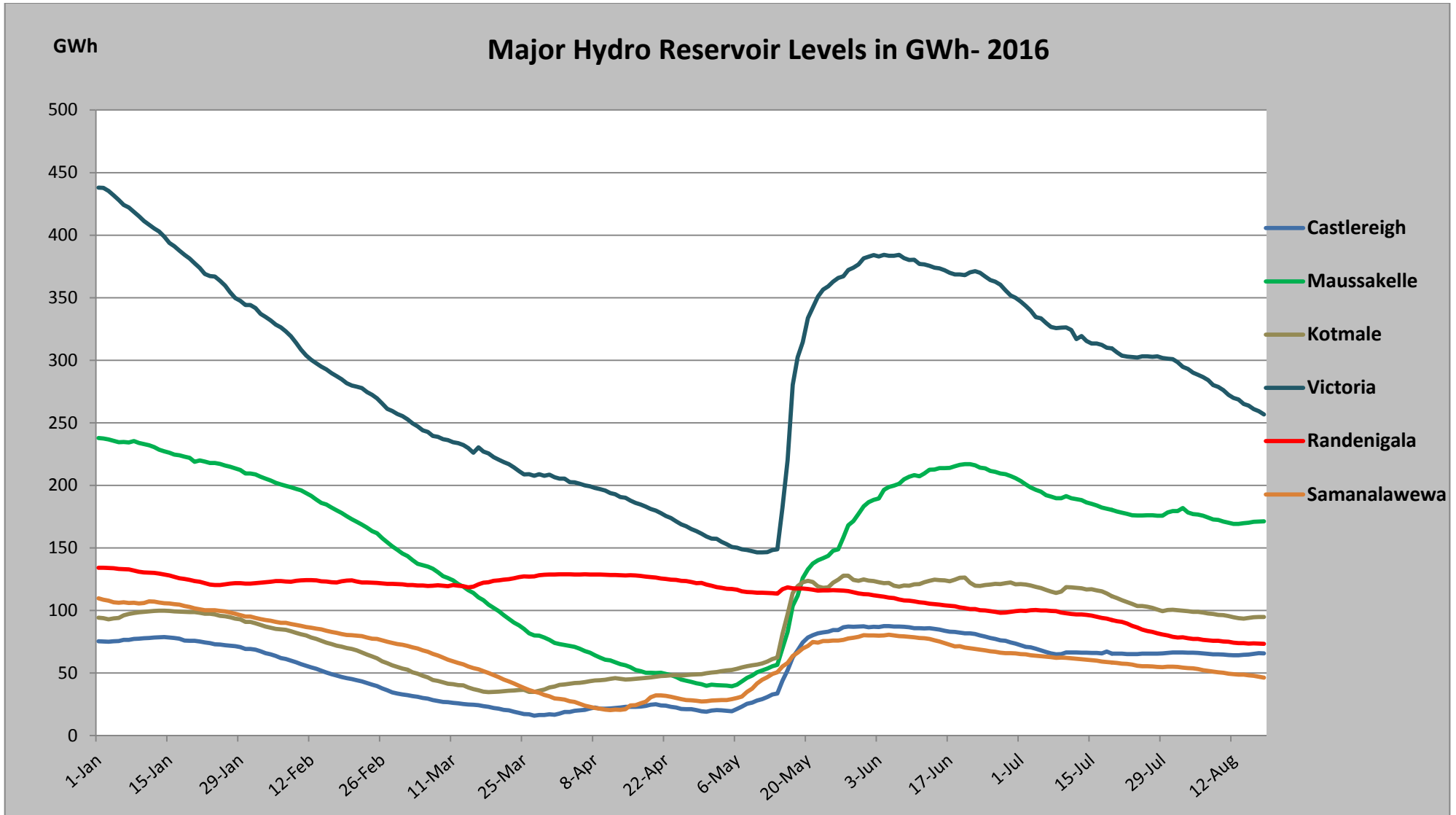


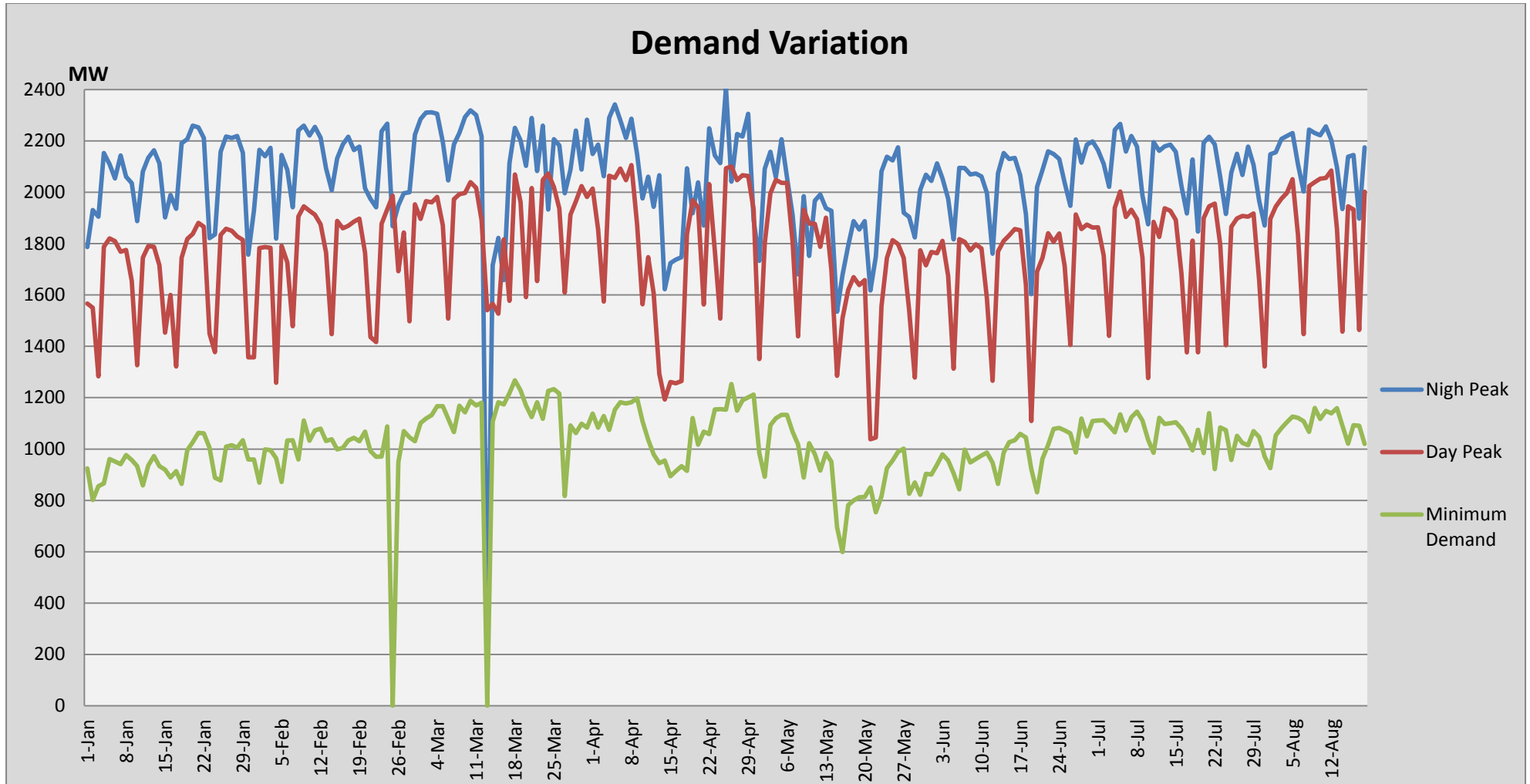
**Note:** Hydro Reservoir Storage Capacity as at August 19, 2016 – 708 GWh (56.25 %)

GWh

### Comparison of Total Reservoir Storage Levels with Past Years



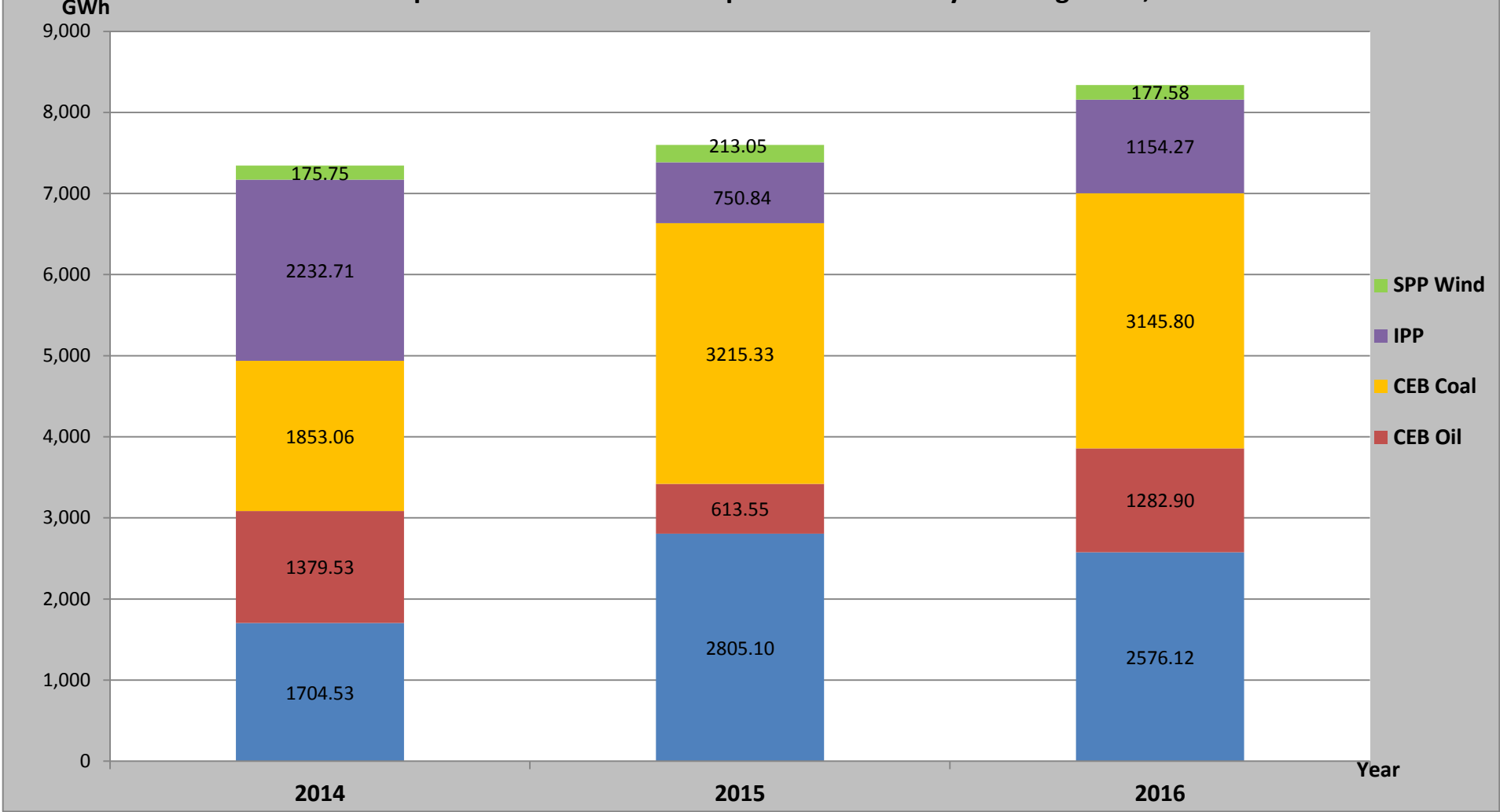




**Note:** Contribution from Mini Hydro, Solar and Biomass is not included

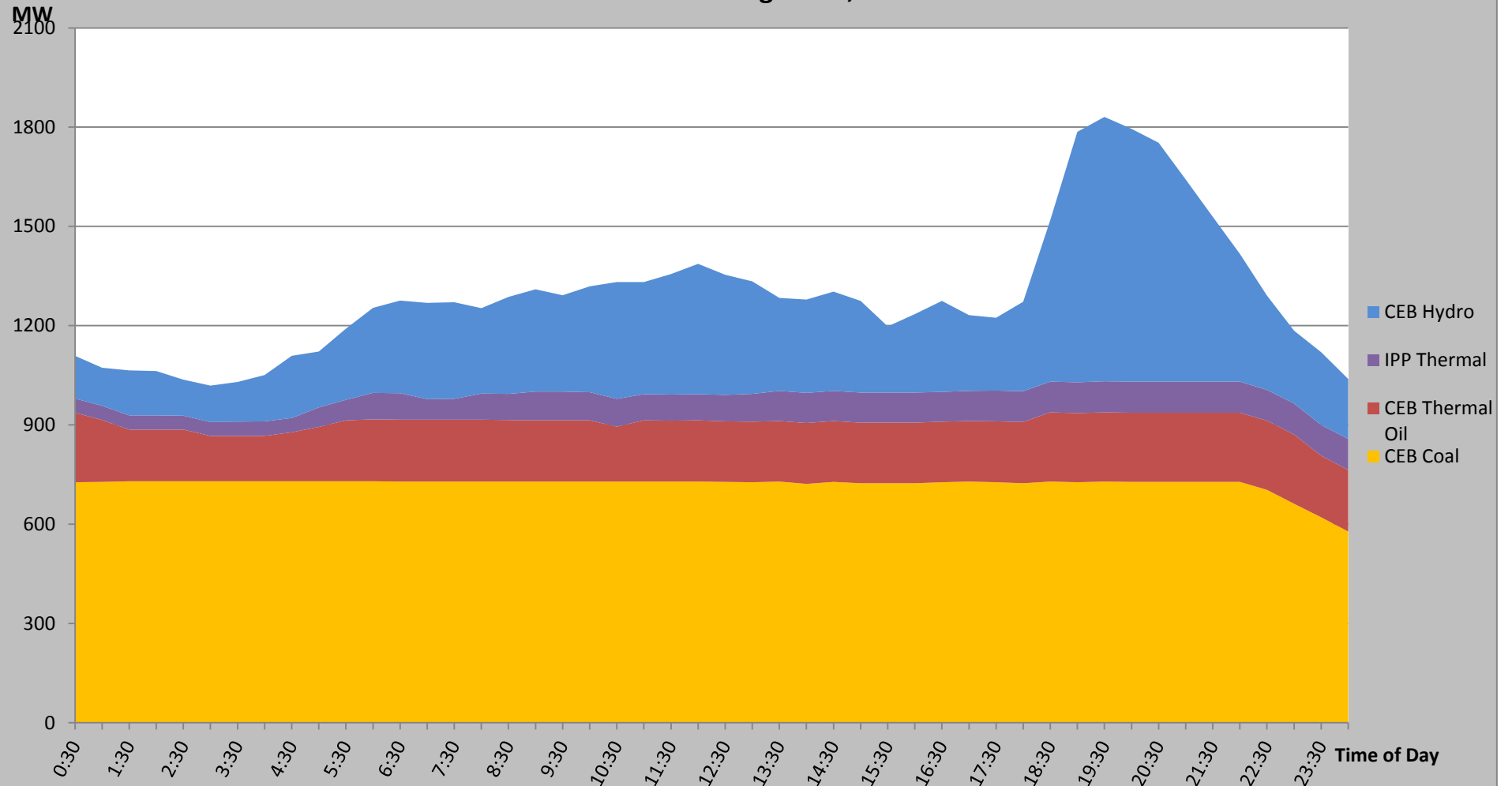


**Comparison of Cumulative Dispatch from January 1 to August 18, 2016**



**Note:** Generation from SPP Mini Hydro, Solar and Biomass is not included

Load Curve for August 17, 2016



## List of Power Stations

Power Station	Capacity (MW)	Primary Fuel
<b>CEB Hydro</b>		
Victoria	210	
Ukuwela	40	
Kotmale	201	
Randenigala	122	
Rantambe	49	
Bowatenna	40	
Nilambe	3.2	
Upper Kotmale	150	
Old Laxapana	50	
New Laxapana	115	
Polpitiya	75	
Wimalasurendra	50	
Canyon	60	
Samanalawewa	120	
Kukuleganga	75	
Inginiyagala	10	
Udawalawe	6	
<b>CEB Thermal</b>		
Sapugaskanda 1	72	Heavy Fuel
Sapugaskanda 2	72	Heavy Fuel
Kelanitissa Small Gas Turbines	68	Auto Diesel
GT 7 - Kelanitissa	115	Auto Diesel
Kelanitissa CCY	165	Naptha & Diesel
Lakvijaya (Puttalam Coal)	285	Coal
Lakvijaya (Puttalam Coal) Stage II	285	Coal
Lakvijaya (Puttalam Coal) Stage III	285	Coal
Uthuru Janani	24	Heavy Fuel
Barge CEB	60	Furnace Oil
<b>Private Thermal (IPPs)</b>		
Asia Power	51	Heavy Fuel
Sojitz - Kelanitissa	163	Auto Diesel
West Coast	270	Low Sulphur Furnace oil
Northern Power	27	Auto Diesel
ACE Embilipitiya	100	Furnace Oil