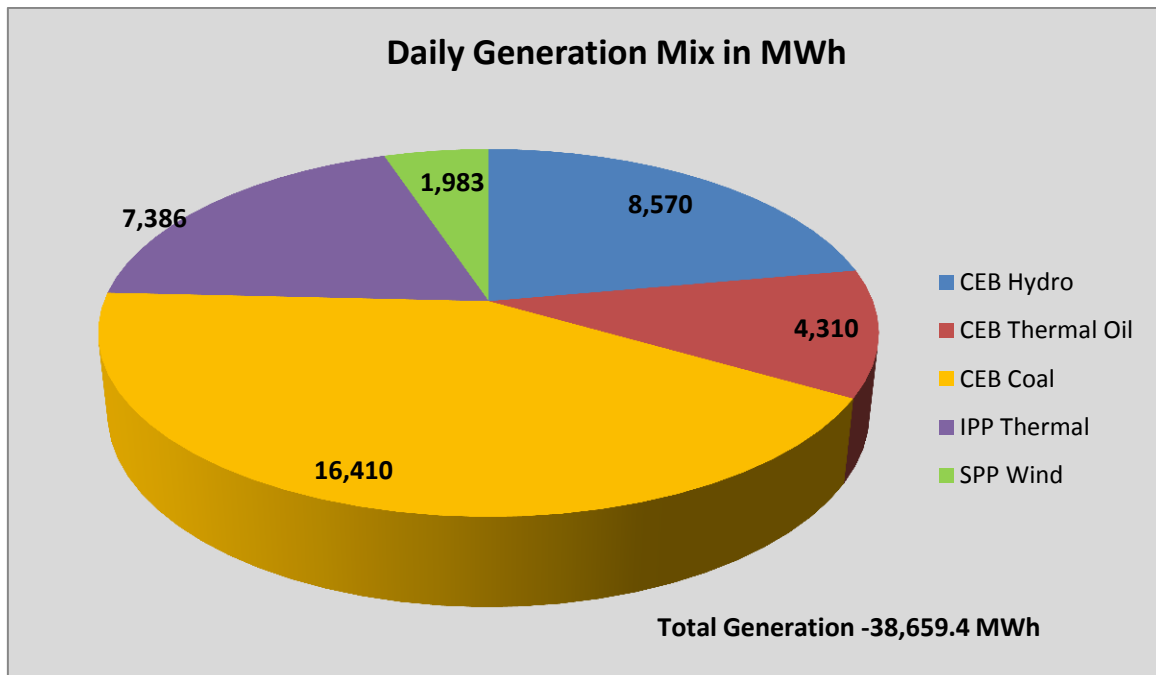


# **Generation and Reservoirs Statistics**

August 16, 2016



PUBLIC UTILITIES COMMISSION OF SRI LANKA



**Note:** Generation from other SPPs (Mini Hydro, Solar and Biomass) is not included

### Cumulative Dispatch- 2016

**July, 2016**

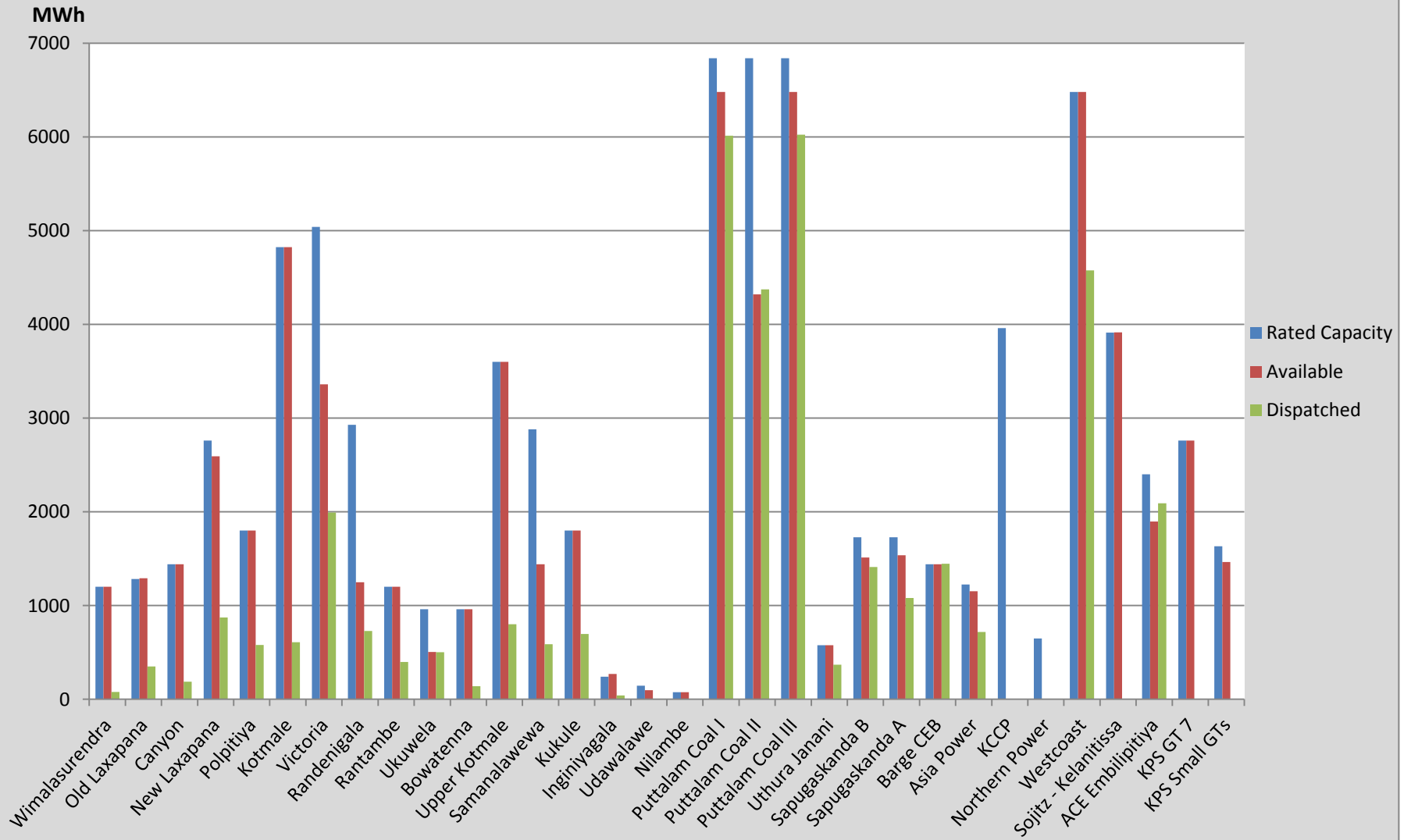
Category	Dispatch (MWh)	
CEB Hydro	138,098.0	22.47%
CEB Thermal Oil	75,650.0	12.31%
CEB Coal	290,930.0	47.34%
IPP Thermal	88,361.0	14.38%
SPP Wind	21,528.7	3.50%
<b>Total</b>	<b>614,567.7</b>	

**January 1 to August 16, 2016**

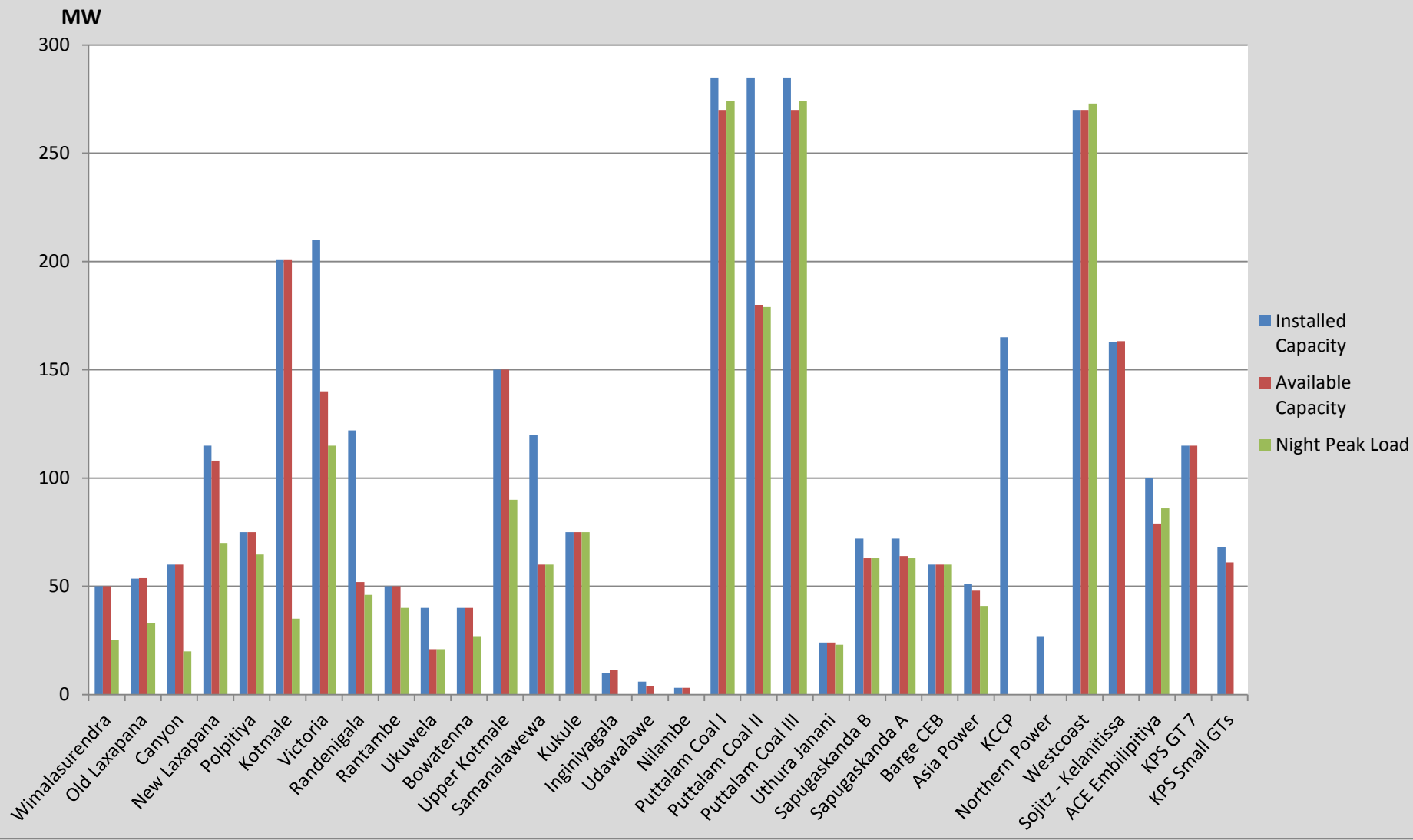
Category	Dispatch (GWh)	
CEB Hydro	2,561	29.63%
CEB Thermal Oil	1,274	14.74%
CEB Coal	3,112	36.01%
IPP Thermal	1,143	13.23%
Renewable	552	6.39%
<b>Total</b>	<b>8,643</b>	

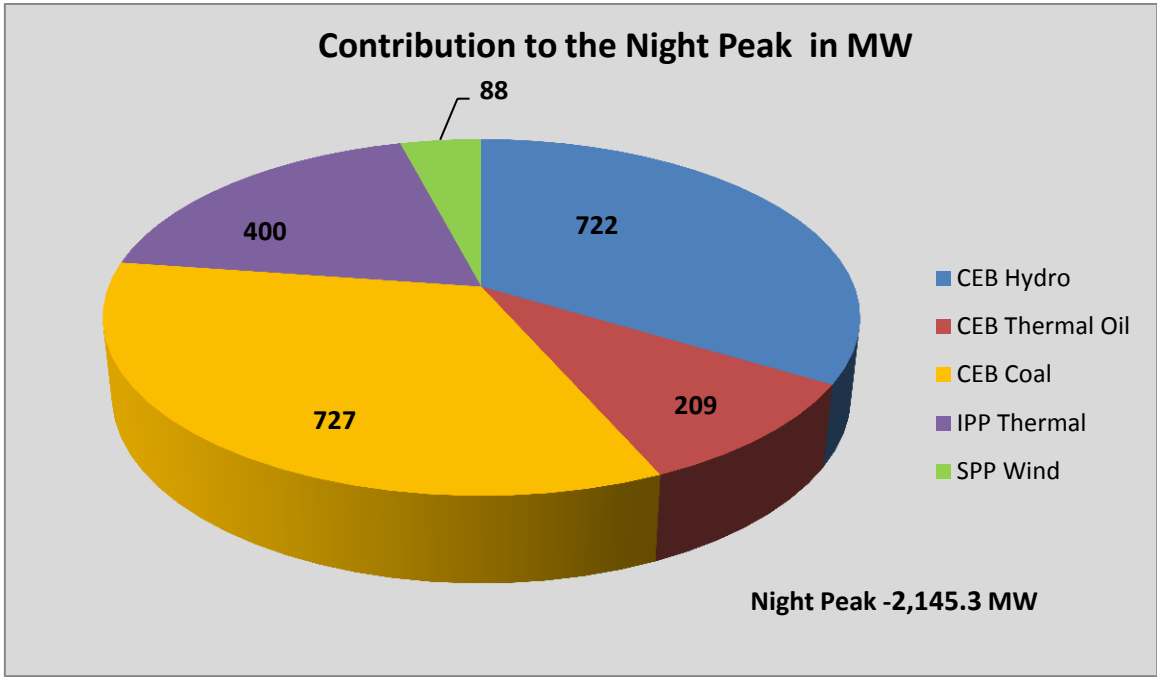
**Note:** Generation from Mini Hydro, Solar and Biomass power plants during June, July and August is not included in annual cumulative renewable generation figure.

### Dispatch on August 16, 2016



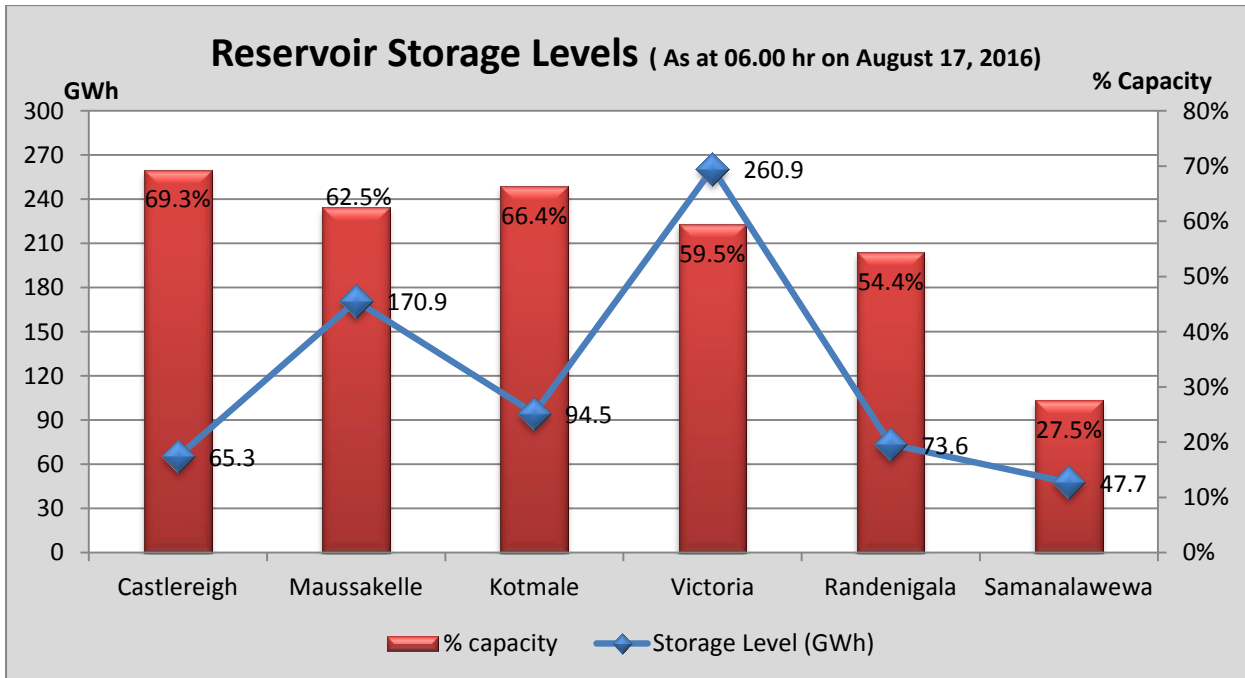
### Night Peak Contribution on August 16, 2016





- Day Peak Demand –1,932.5 MW
- Minimum Recorded Demand –1,092.6 MW

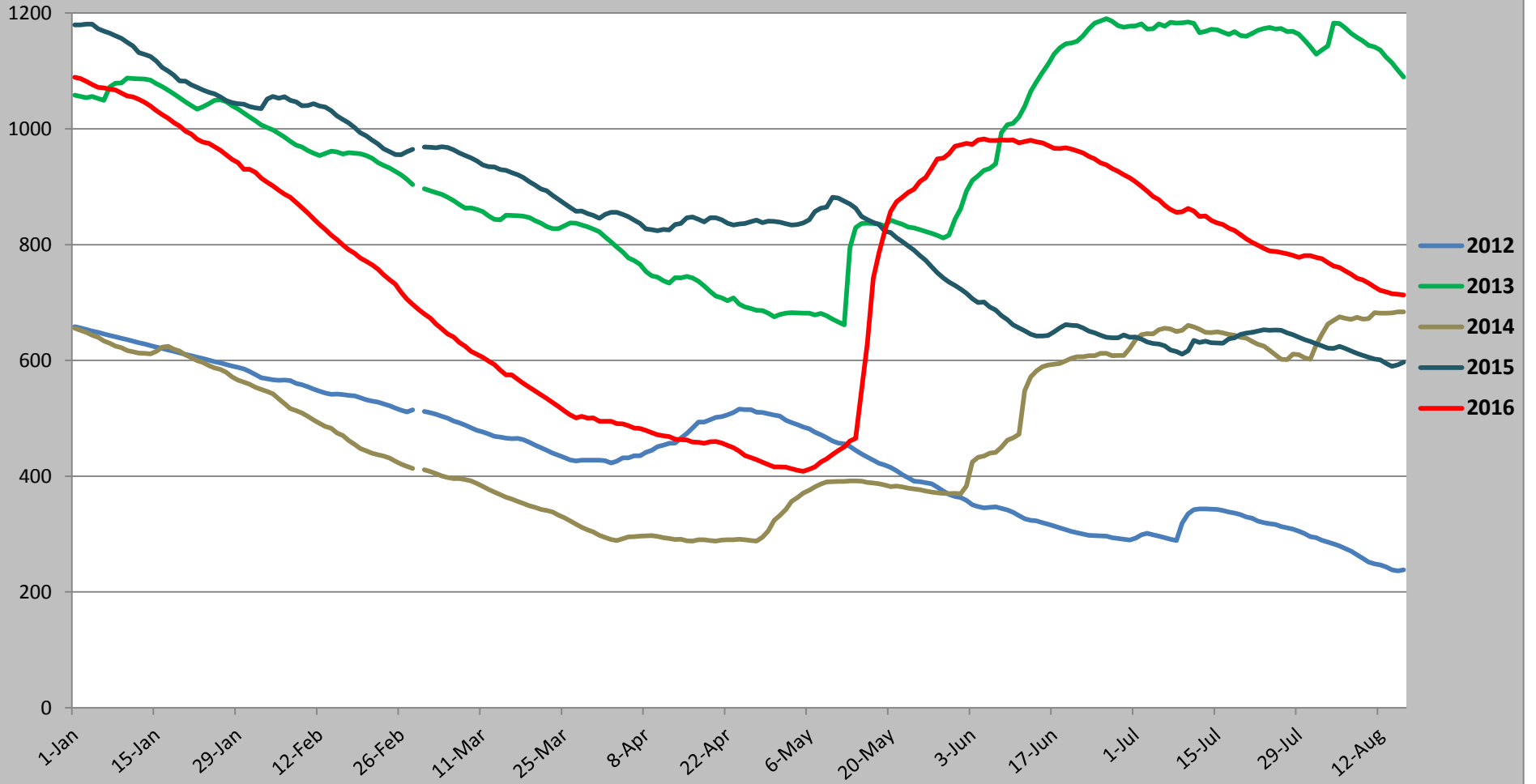
*Note: Contribution from other SPPs (Mini Hydro, Solar and Biomass) is not included*



**Note:** Hydro Reservoir Storage Capacity as at August 17, 2016 – 712.9 GWh (56.65 %)

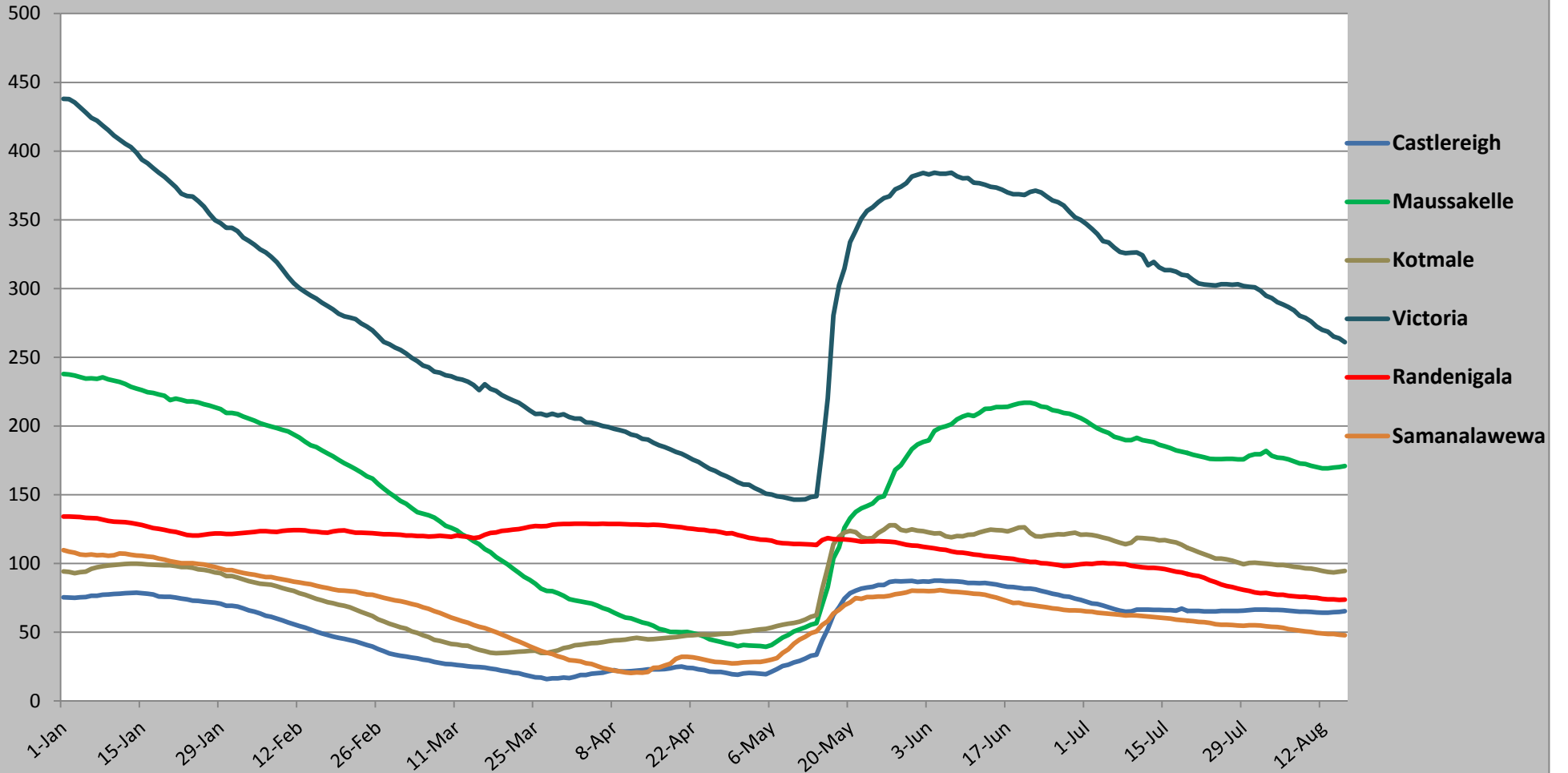
GWh

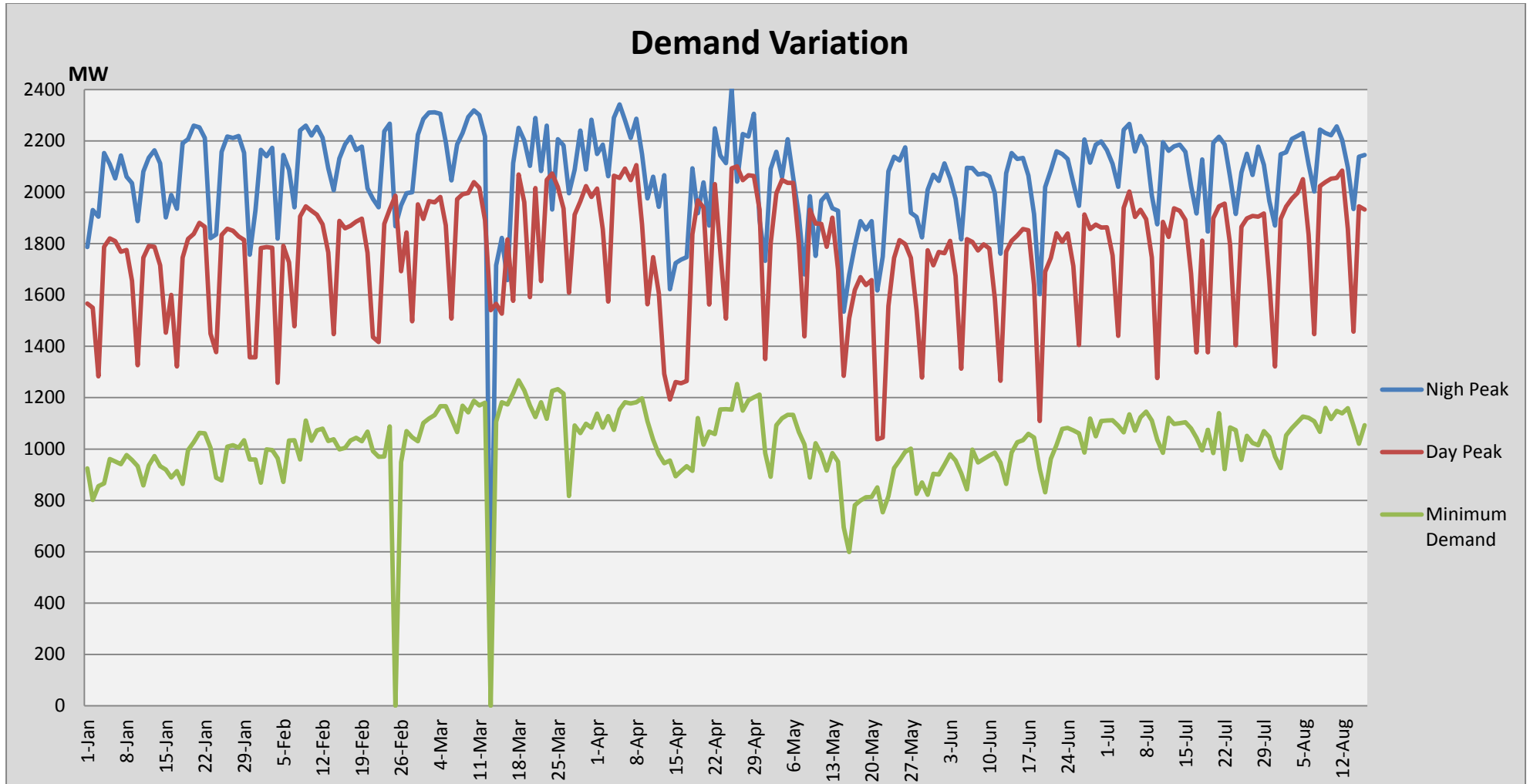
### Comparison of Total Reservoir Storage Levels with Past Years



### Major Hydro Reservoir Levels in GWh- 2016

GWh

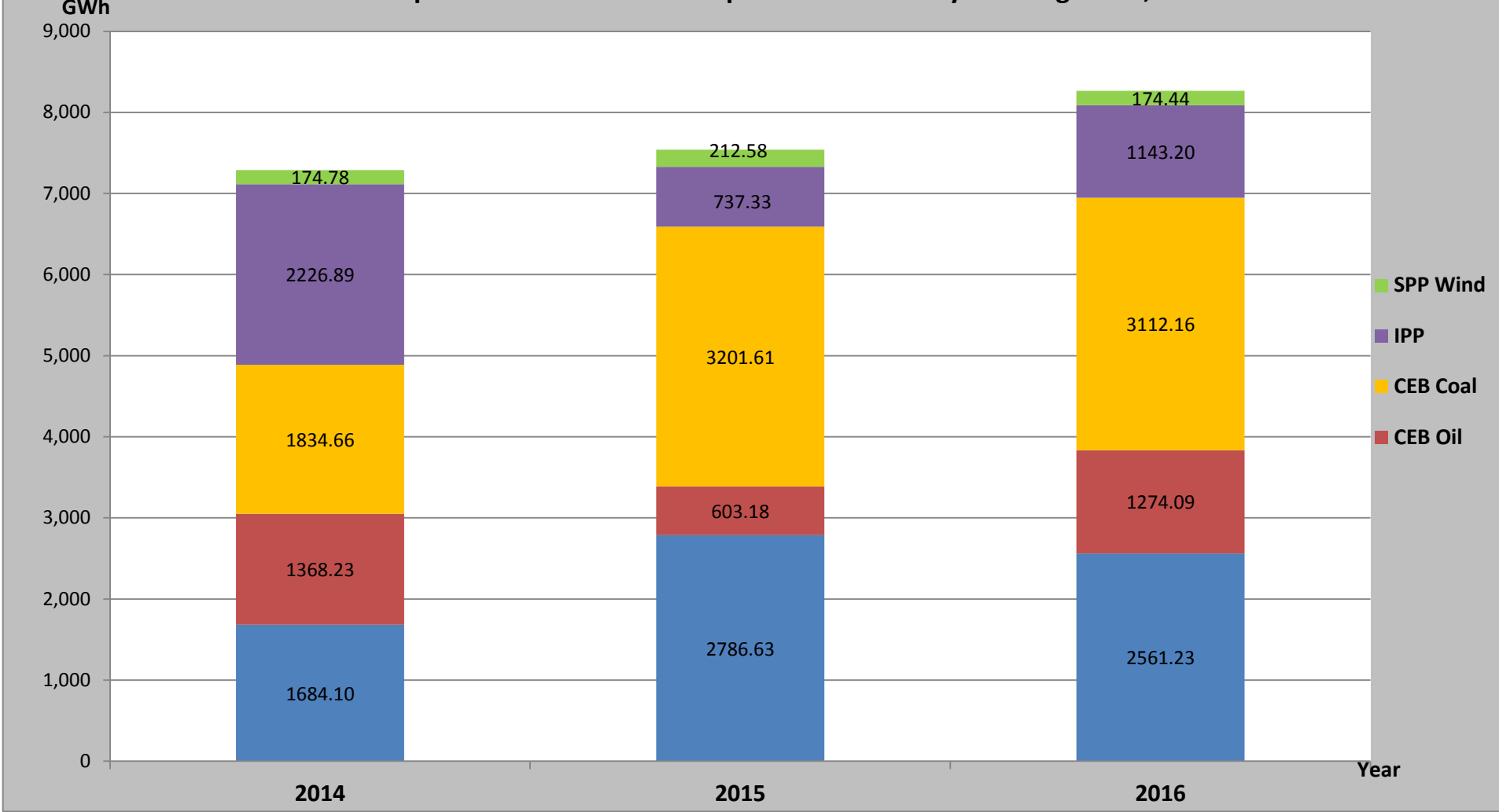




**Note:** Contribution from Mini Hydro, Solar and Biomass is not included



**Comparison of Cumulative Dispatch from January 1 to August 16, 2016**



**Note:** Generation from SPP Mini Hydro, Solar and Biomass is not included

Load Curve for August 15,2016 will be published in Generation Report August 18, 2016

## List of Power Stations

Power Station	Capacity (MW)	Primary Fuel
<b>CEB Hydro</b>		
Victoria	210	
Ukuwela	40	
Kotmale	201	
Randenigala	122	
Rantambe	49	
Bowatenna	40	
Nilambe	3.2	
Upper Kotmale	150	
Old Laxapana	50	
New Laxapana	115	
Polpitiya	75	
Wimalasurendra	50	
Canyon	60	
Samanalawewa	120	
Kukuleganga	75	
Inginiyagala	10	
Udawalawe	6	
<b>CEB Thermal</b>		
Sapugaskanda 1	72	Heavy Fuel
Sapugaskanda 2	72	Heavy Fuel
Kelanitissa Small Gas Turbines	68	Auto Diesel
GT 7 - Kelanitissa	115	Auto Diesel
Kelanitissa CCY	165	Naptha & Diesel
Lakvijaya (Puttalam Coal)	285	Coal
Lakvijaya (Puttalam Coal) Stage II	285	Coal
Lakvijaya (Puttalam Coal) Stage III	285	Coal
Uthuru Janani	24	Heavy Fuel
Barge CEB	60	Furnace Oil
<b>Private Thermal (IPPs)</b>		
Asia Power	51	Heavy Fuel
Sojitz - Kelanitissa	163	Auto Diesel
West Coast	270	Low Sulphur Furnace oil
Northern Power	27	Auto Diesel
ACE Embilipitiya	100	Furnace Oil