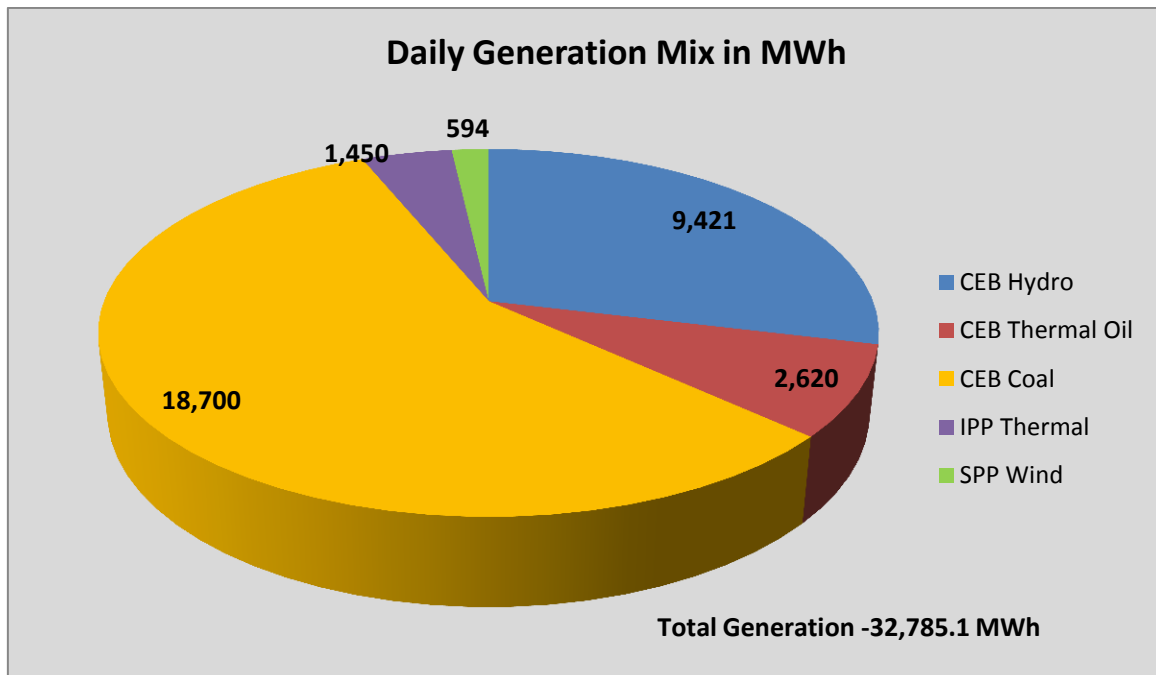


Generation and Reservoirs Statistics

August 07, 2016



PUBLIC UTILITIES COMMISSION OF SRI LANKA



Note: Generation from other SPPs (Mini Hydro, Solar and Biomass) is not included

Cumulative Dispatch- 2016

July, 2016

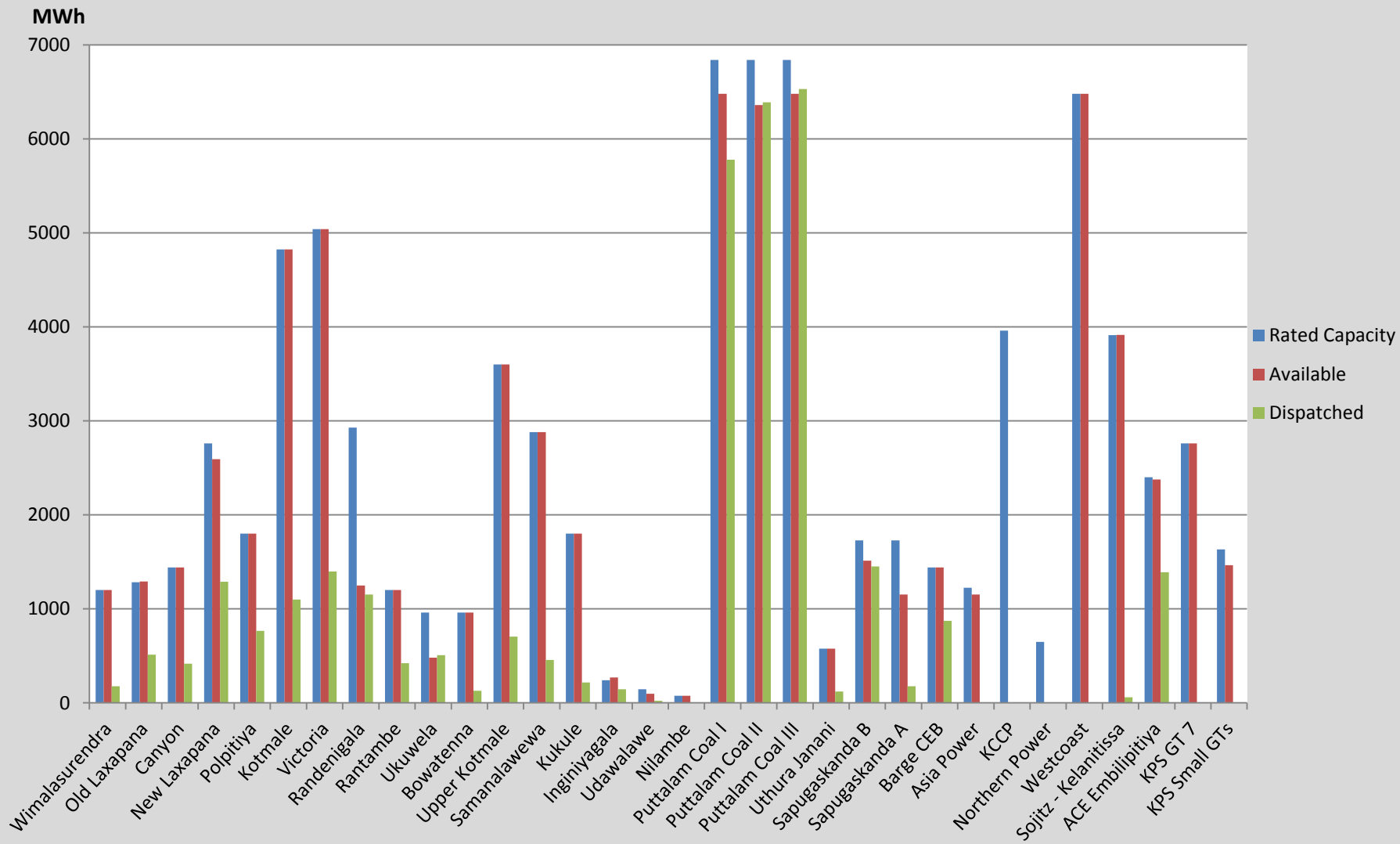
Category	Dispatch (MWh)	
CEB Hydro	63,405.0	23.98%
CEB Thermal Oil	38,990.0	14.74%
CEB Coal	130,940.0	49.52%
IPP Thermal	20,771.0	7.85%
SPP Wind	10,331.5	3.91%
Total	264,437.5	

January 1 to August 07, 2016

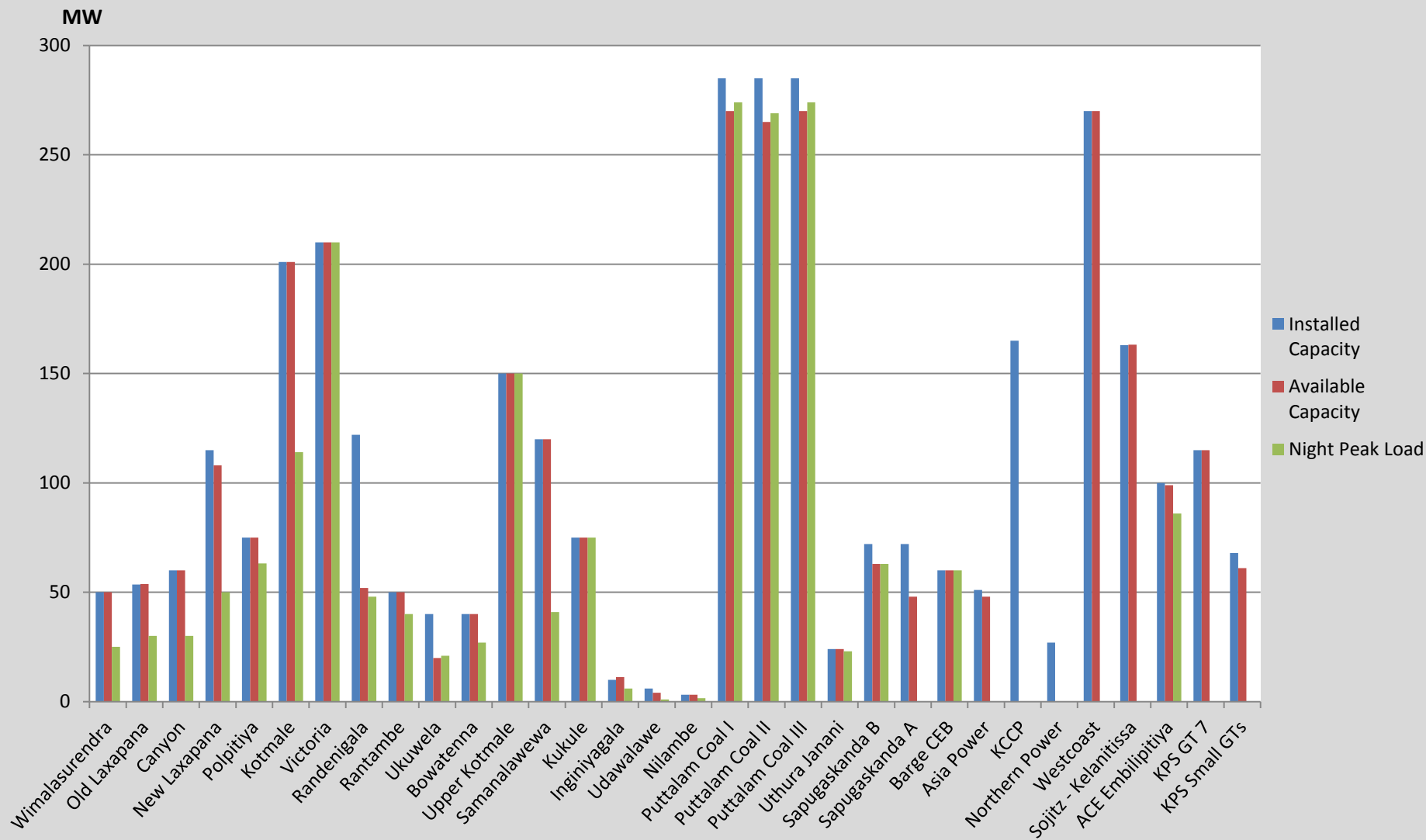
Category	Dispatch (GWh)	
CEB Hydro	2,487	29.99%
CEB Thermal Oil	1,237	14.92%
CEB Coal	2,952	35.60%
IPP Thermal	1,076	12.97%
Renewable	541	6.52%
Total	8,292	

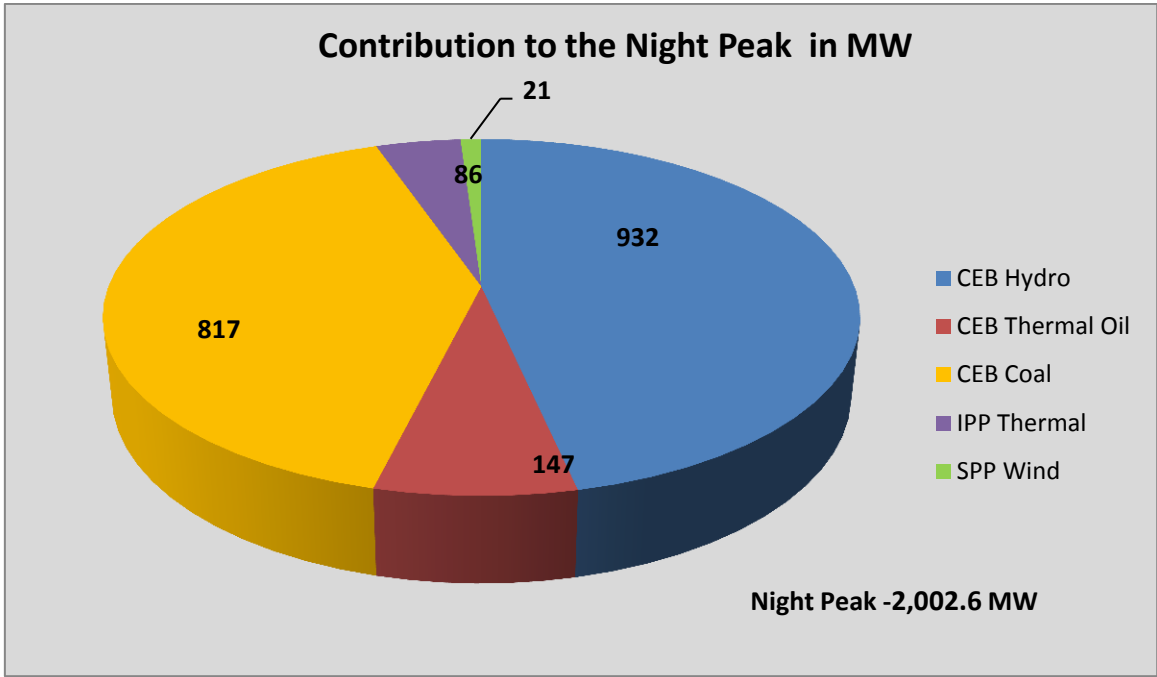
Note: Generation from Mini Hydro, Solar and Biomass power plants during June, July and August is not included in annual cumulative renewable generation figure.

Dispatch on August 07, 2016



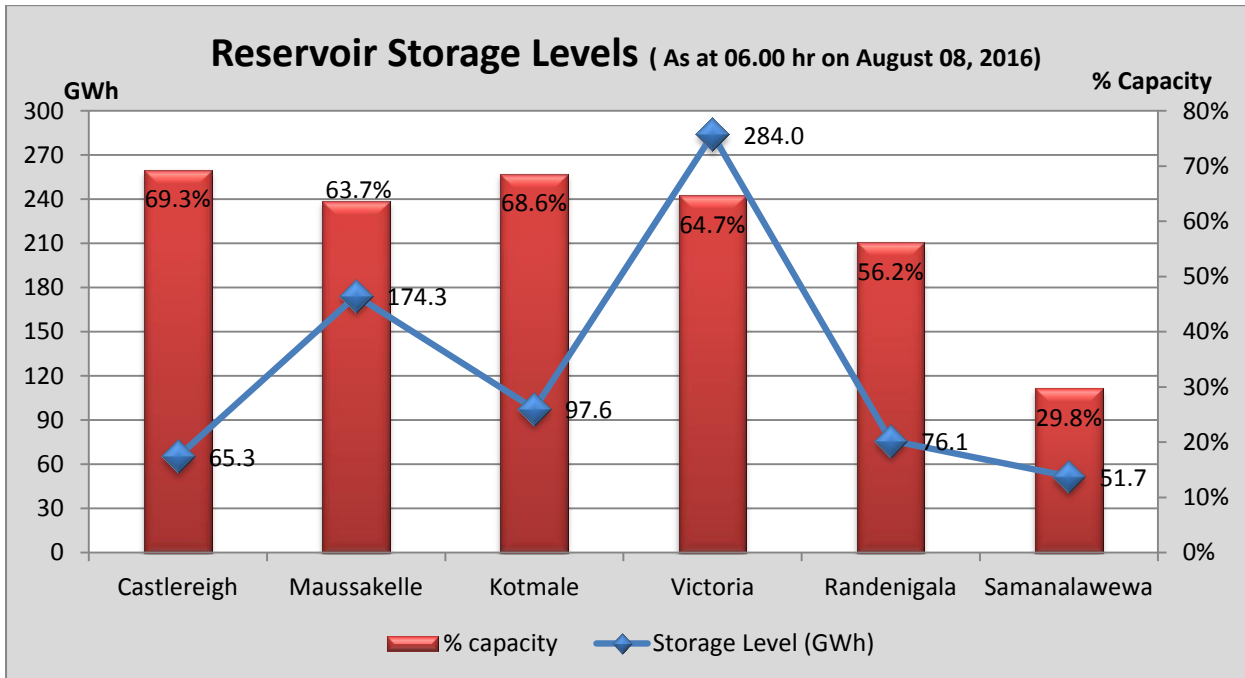
Night Peak Contribution on August 07, 2016





- Day Peak Demand –1,447.8 MW
- Minimum Recorded Demand –1,108.6 MW

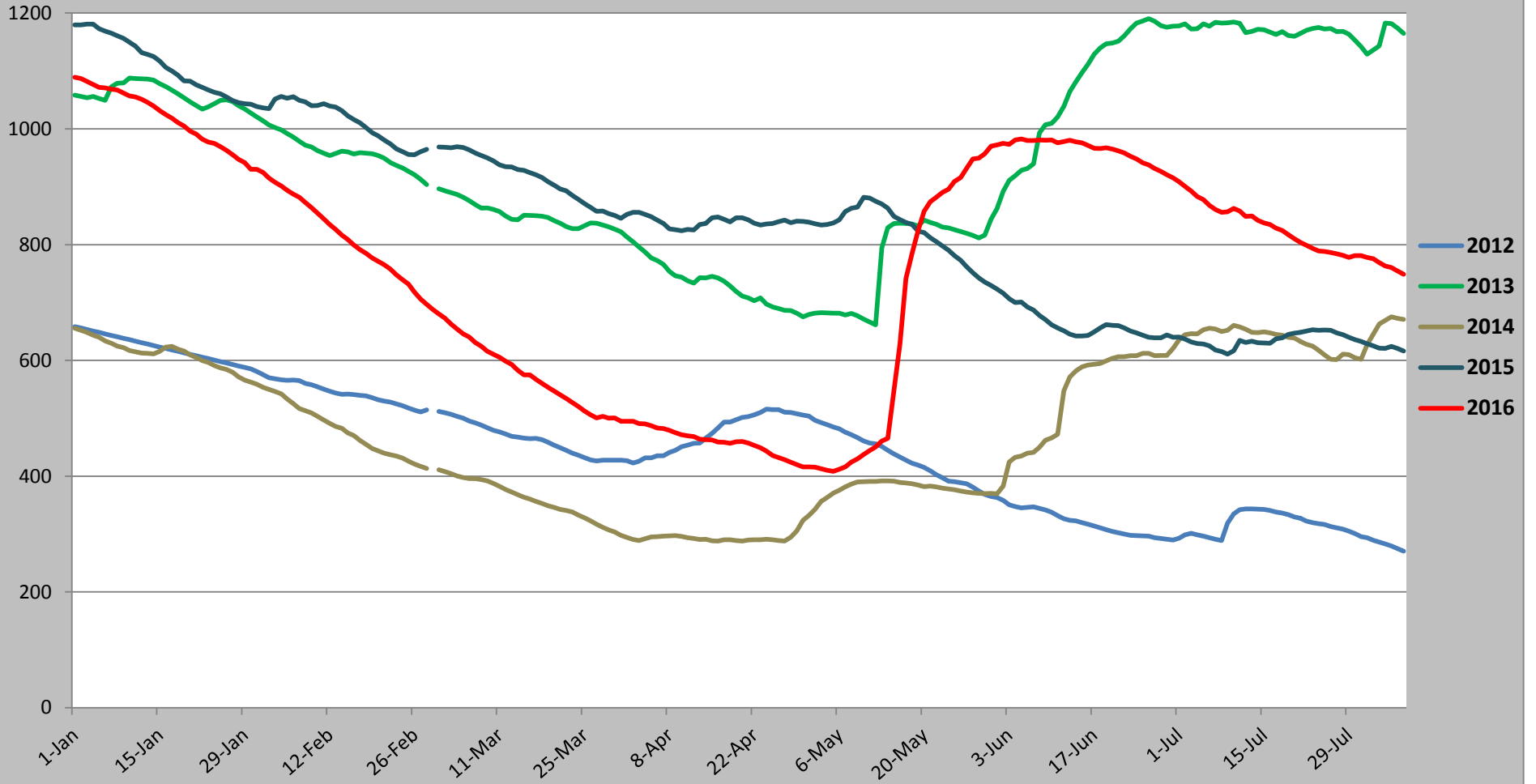
Note: Contribution from other SPPs (Mini Hydro, Solar and Biomass) is not included

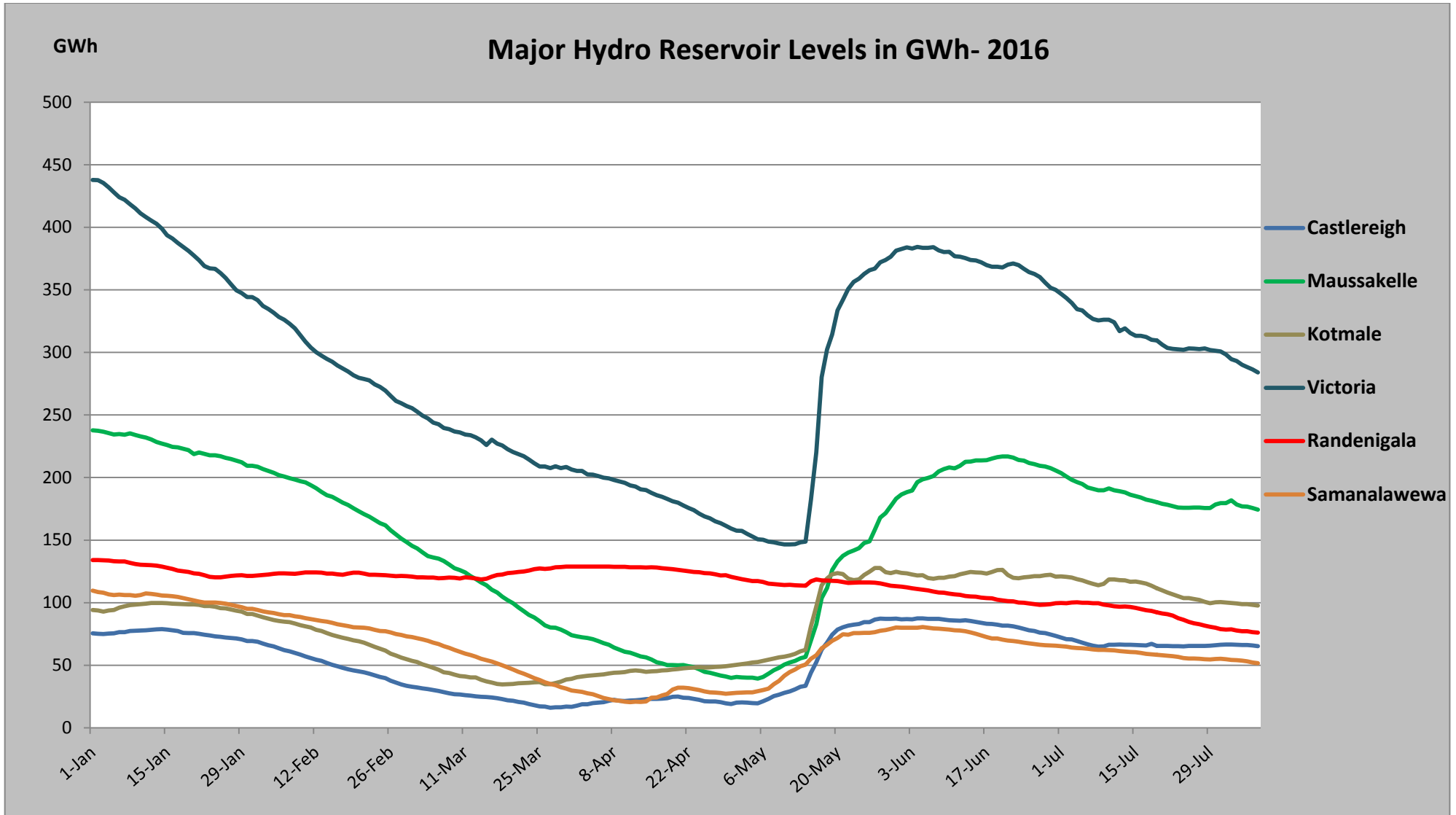


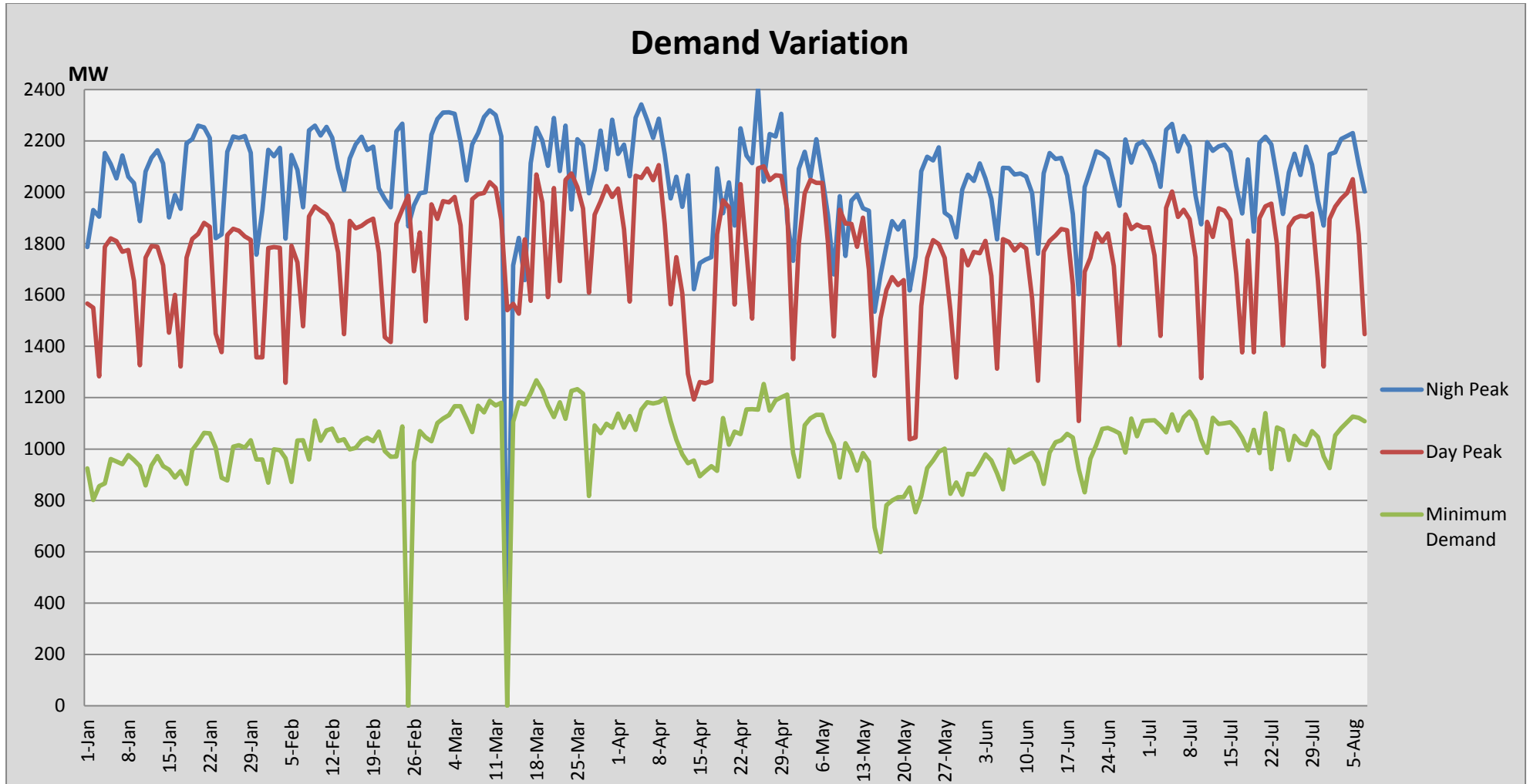
Note: Hydro Reservoir Storage Capacity as at August 08, 2016 – 749.0 GWh (59.52%)

GWh

Comparison of Total Reservoir Storage Levels with Past Years

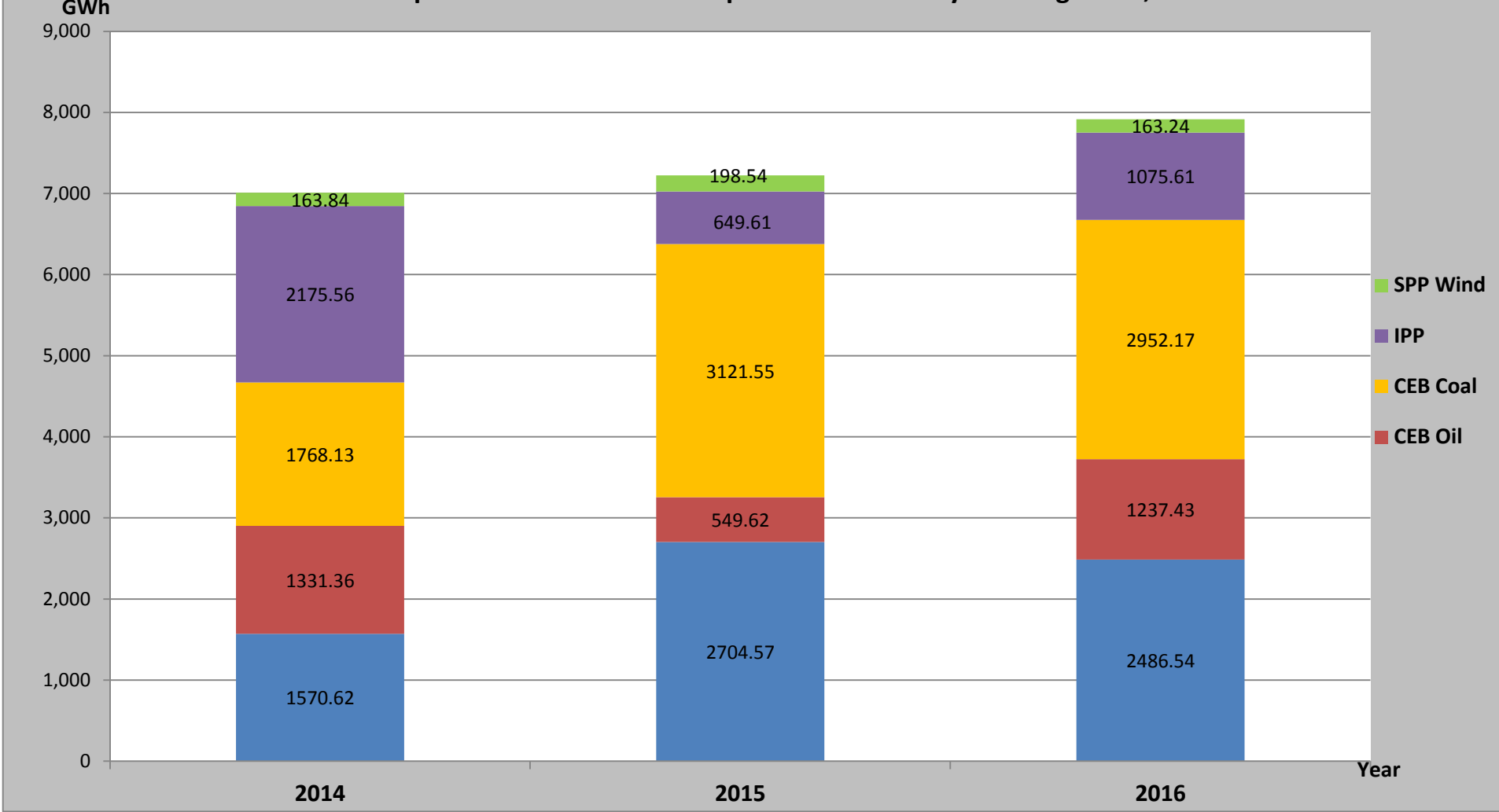






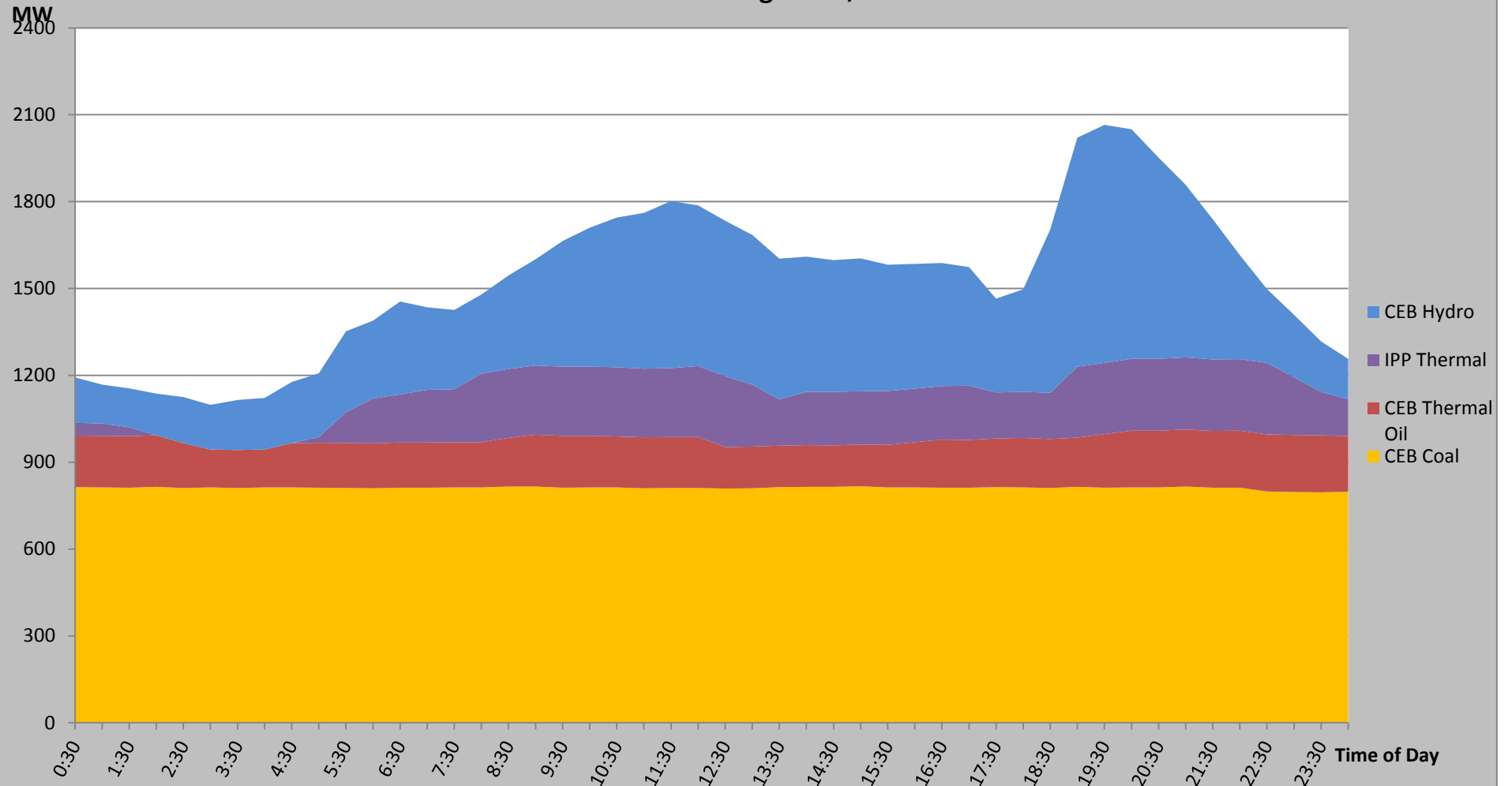
Note: Contribution from Mini Hydro, Solar and Biomass is not included

Comparison of Cumulative Dispatch from January 1 to August 07, 2016



Note: Generation from SPP Mini Hydro, Solar and Biomass is not included

Load Curve for August 06,2016



List of Power Stations

Power Station	Capacity (MW)	Primary Fuel
CEB Hydro		
Victoria	210	
Ukuwela	40	
Kotmale	201	
Randenigala	122	
Rantambe	49	
Bowatenna	40	
Nilambe	3.2	
Upper Kotmale	150	
Old Laxapana	50	
New Laxapana	115	
Polpitiya	75	
Wimalasurendra	50	
Canyon	60	
Samanalawewa	120	
Kukuleganga	75	
Inginiyagala	10	
Udawalawe	6	
CEB Thermal		
Sapugaskanda 1	72	Heavy Fuel
Sapugaskanda 2	72	Heavy Fuel
Kelanitissa Small Gas Turbines	68	Auto Diesel
GT 7 - Kelanitissa	115	Auto Diesel
Kelanitissa CCY	165	Naptha & Diesel
Lakvijaya (Puttalam Coal)	285	Coal
Lakvijaya (Puttalam Coal) Stage II	285	Coal
Lakvijaya (Puttalam Coal) Stage III	285	Coal
Uthuru Janani	24	Heavy Fuel
Barge CEB	60	Furnace Oil
Private Thermal (IPPs)		
Asia Power	51	Heavy Fuel
Sojitz - Kelanitissa	163	Auto Diesel
West Coast	270	Low Sulphur Furnace oil
Northern Power	27	Auto Diesel
ACE Embilipitiya	100	Furnace Oil