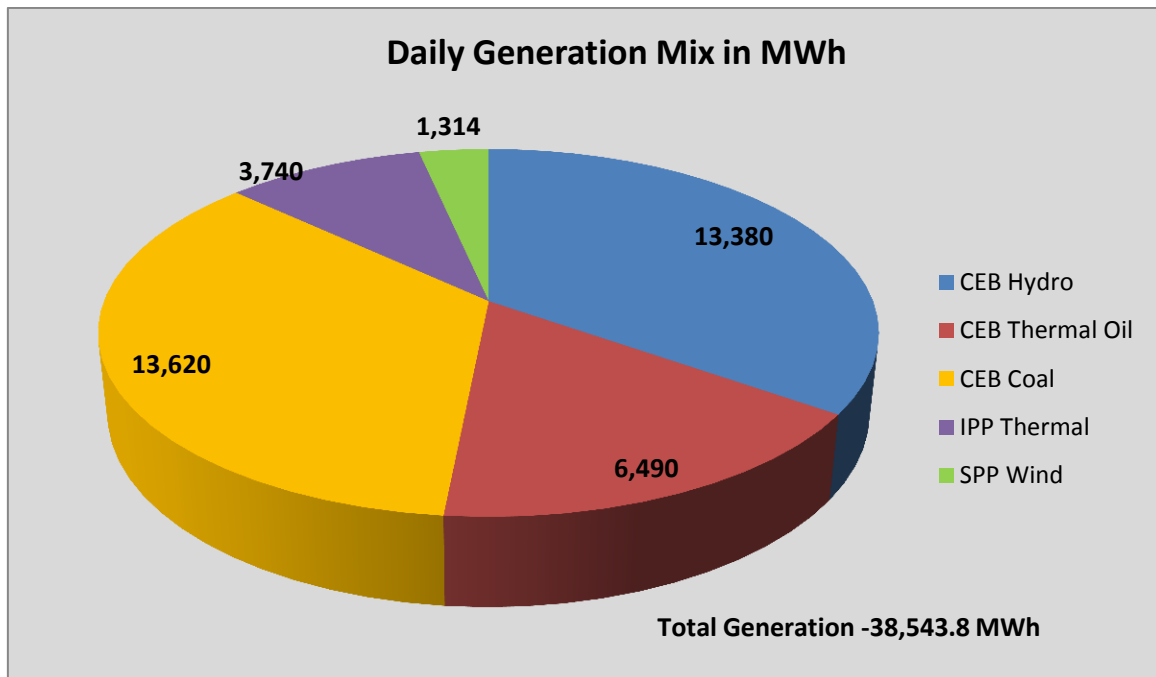


Generation and Reservoirs Statistics

July 06, 2016



PUBLIC UTILITIES COMMISSION OF SRI LANKA



Note: Generation from other SPPs (Mini Hydro, Solar and Biomass) is not included

Cumulative Dispatch- 2016

June, 2016

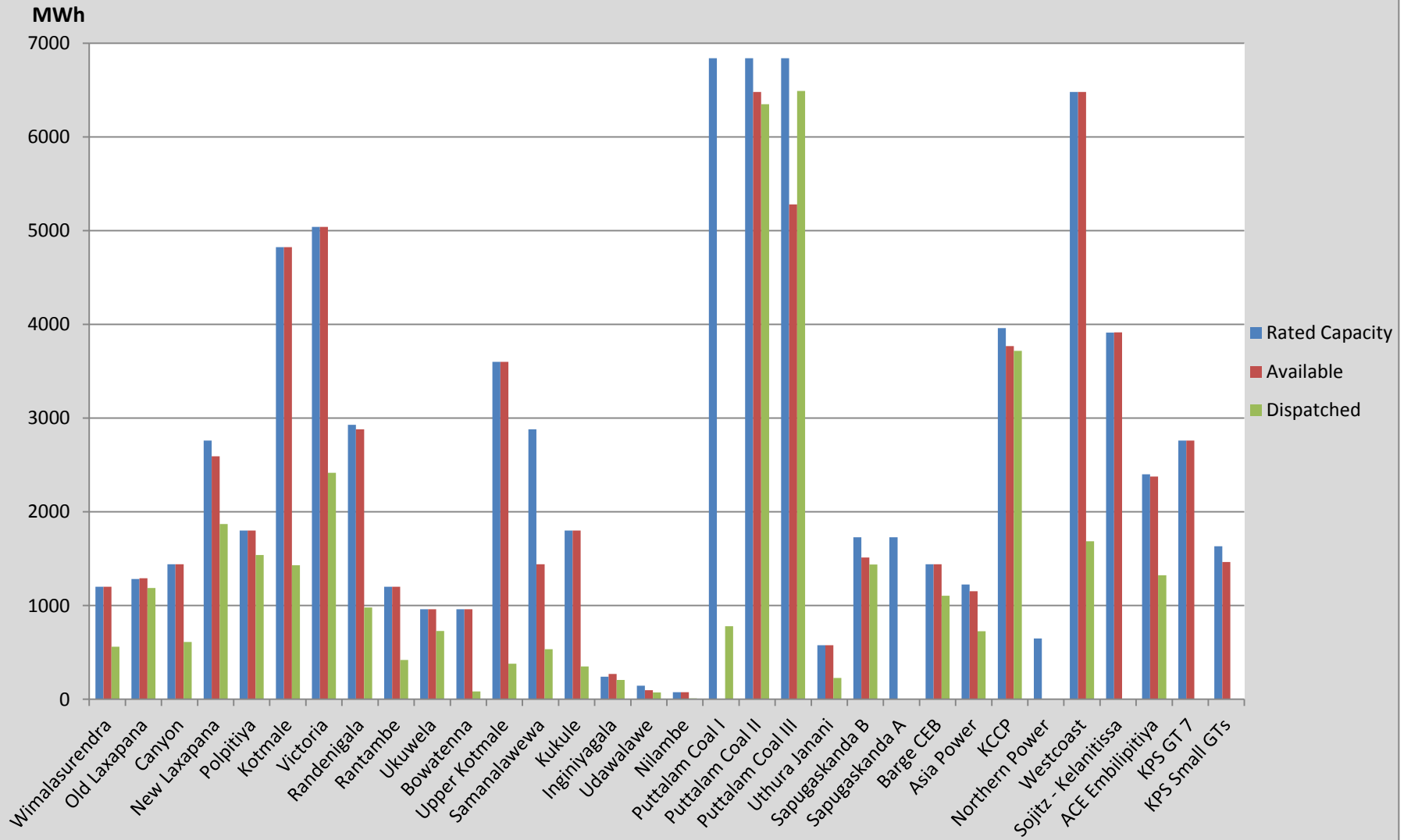
| Category | Dispatch (MWh) | |
|-----------------|------------------|--------|
| CEB Hydro | 83,412.0 | 36.97% |
| CEB Thermal Oil | 33,710.0 | 14.94% |
| CEB Coal | 85,280.0 | 37.80% |
| IPP Thermal | 16,323.0 | 7.23% |
| SPP Wind | 6,893.7 | 3.06% |
| Total | 225,618.7 | |

January 1 to July 07, 2016

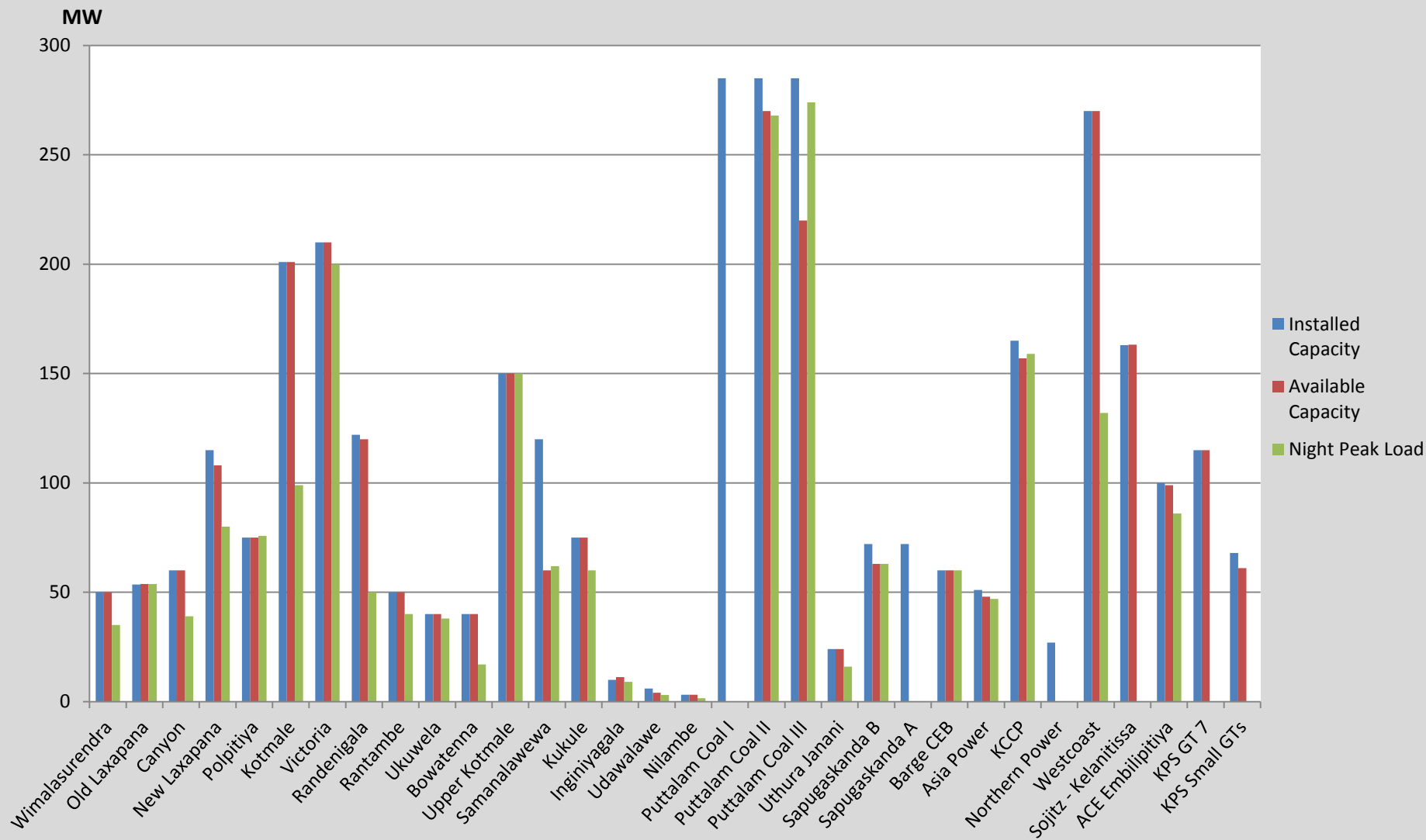
| Category | Dispatch (GWh) | |
|-----------------|----------------|--------|
| CEB Hydro | 2,173 | 31.09% |
| CEB Thermal Oil | 1,065 | 15.23% |
| CEB Coal | 2,394 | 34.25% |
| IPP Thermal | 989 | 14.16% |
| Renewable | 368 | 5.27% |
| Total | 6,989 | |

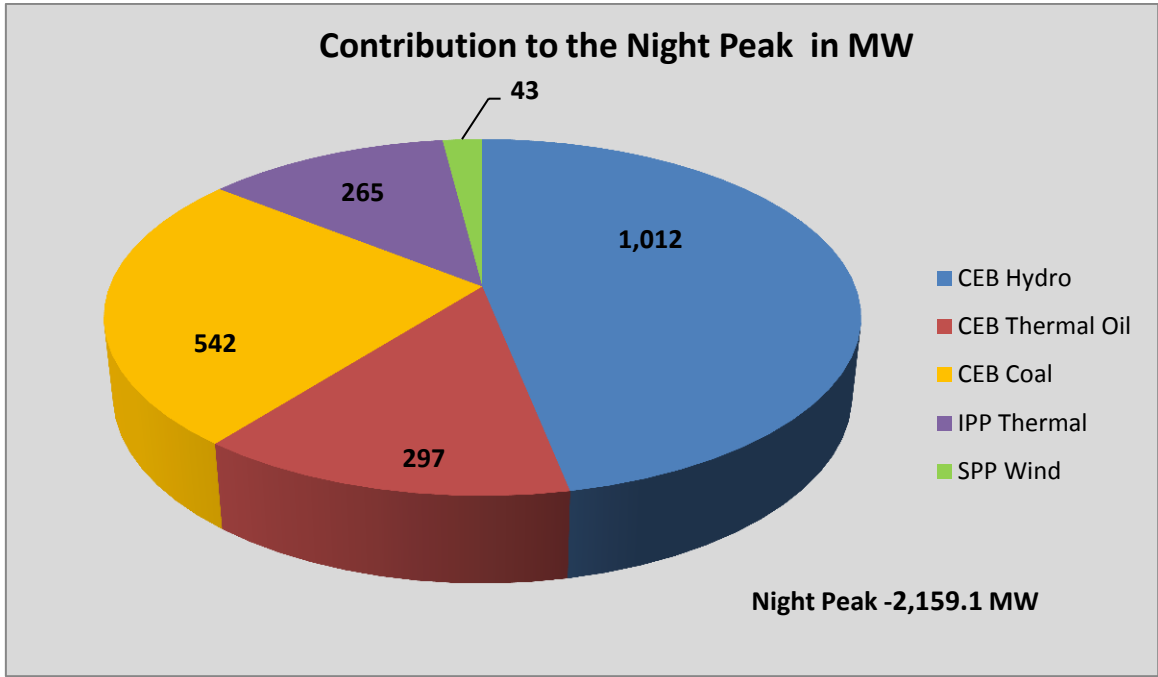
Note: Generation from Mini Hydro, Solar and Biomass power plants during May, June and July is not included in annual cumulative renewable generation figure.

Dispatch on July 06, 2016



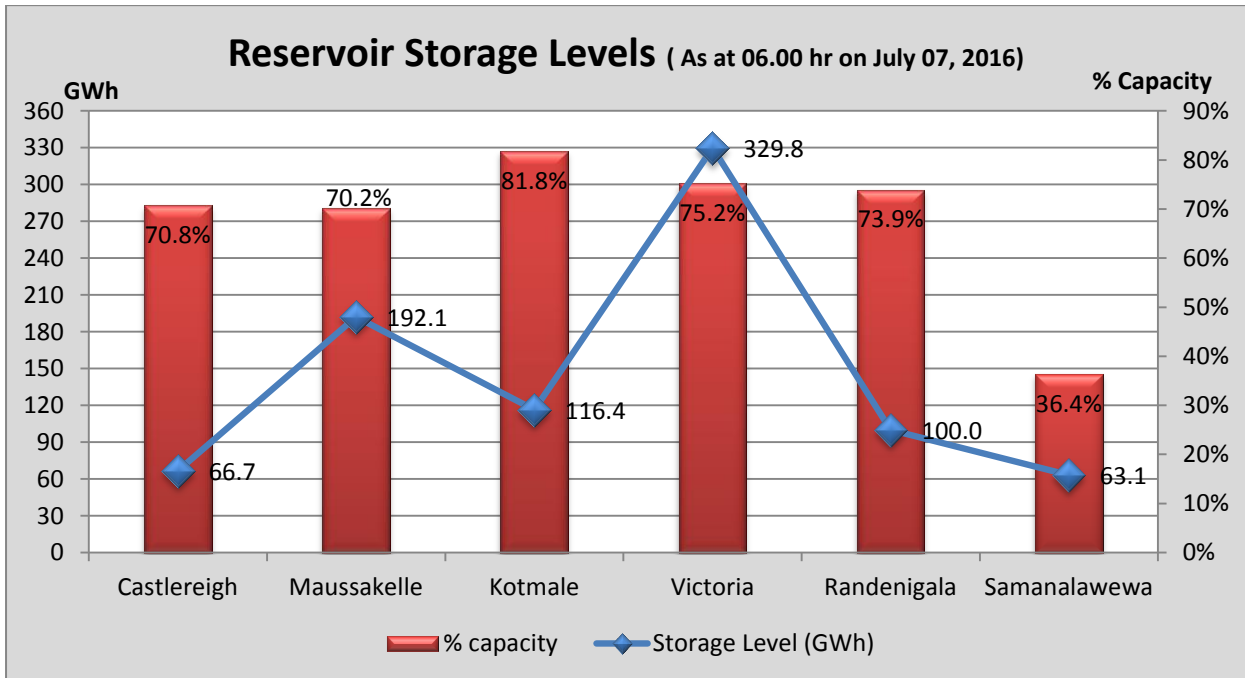
Night Peak Contribution on July 06, 2016





- Day Peak Demand –1,904.0 MW
- Minimum Recorded Demand –1,071.7 MW

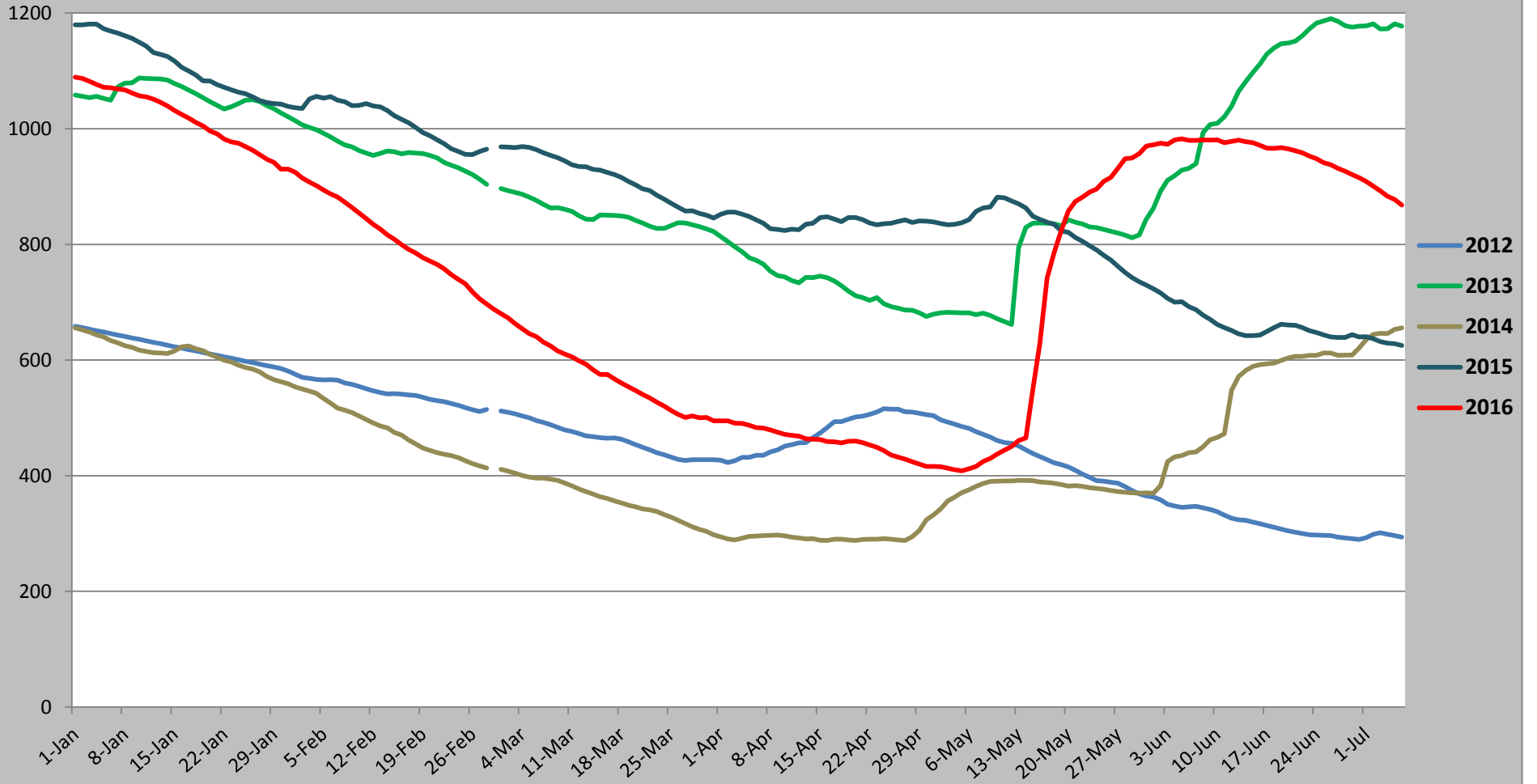
Note: Contribution from other SPPs (Mini Hydro, Solar and Biomass) is not included



Note: Hydro Reservoir Storage Capacity as at July 07, 2016 – 868.1 GWh (68.99%)

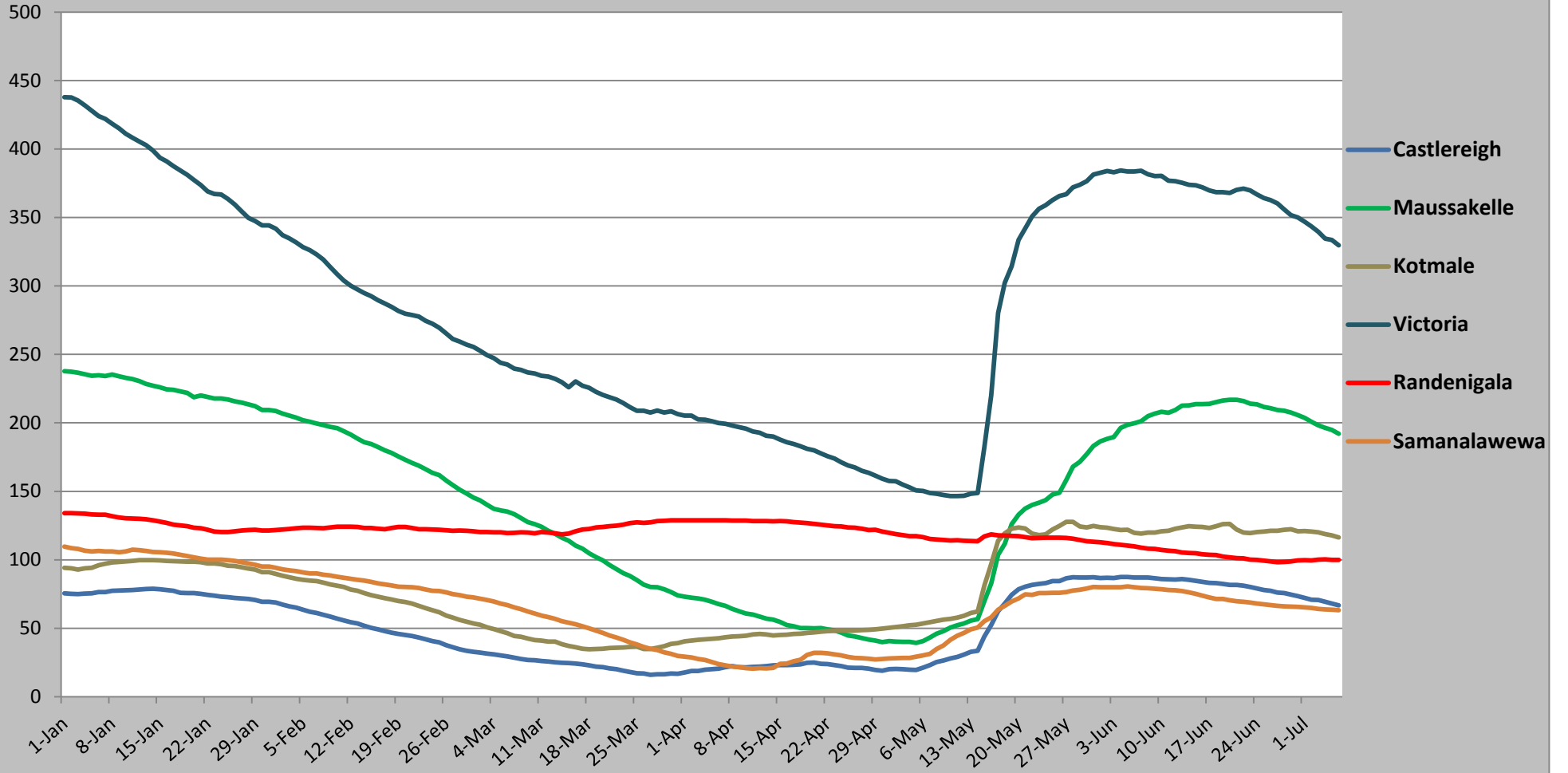
GWh

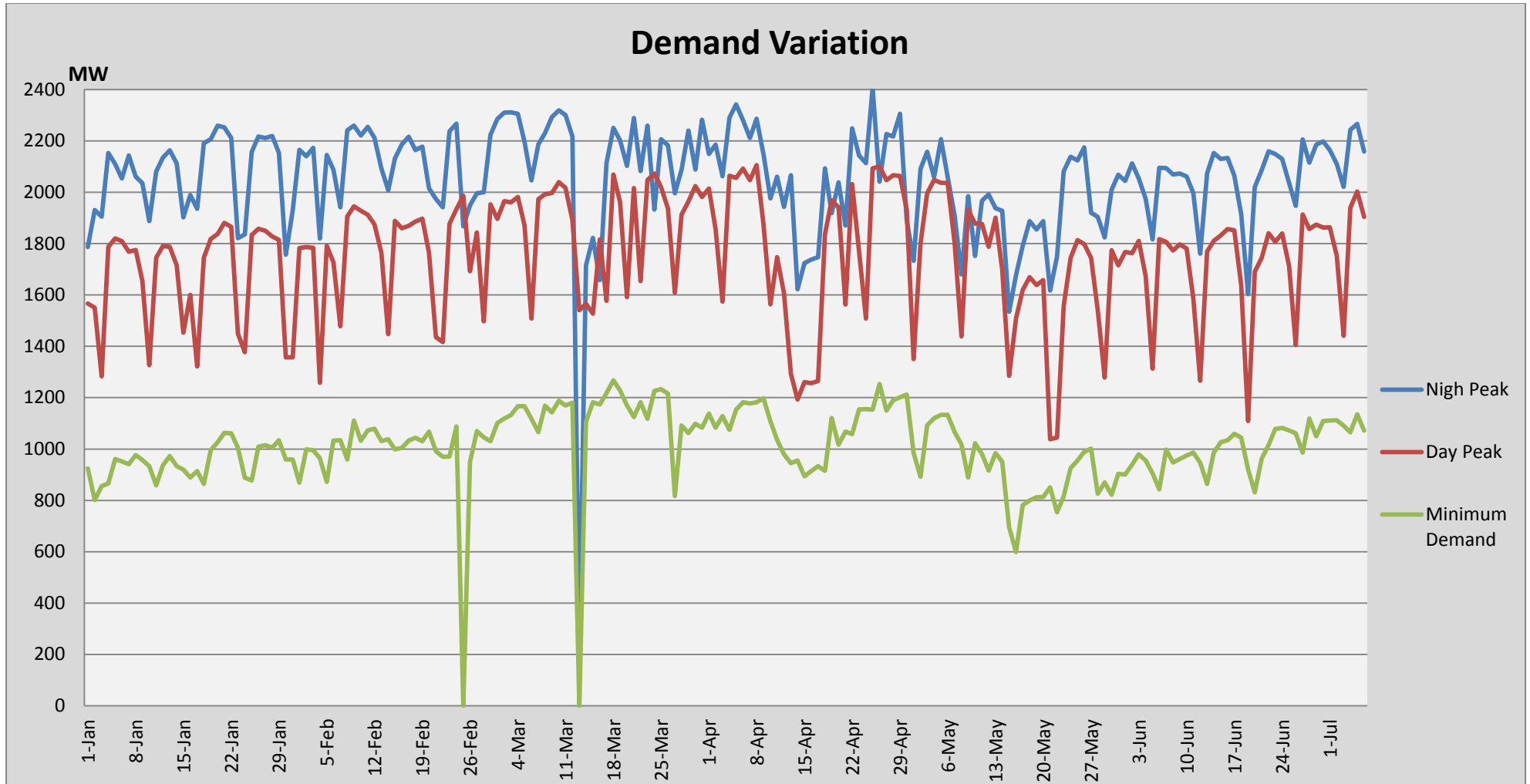
Comparison of Total Reservoir Storage Levels with Past Years



Major Hydro Reservoir Levels in GWh- 2016

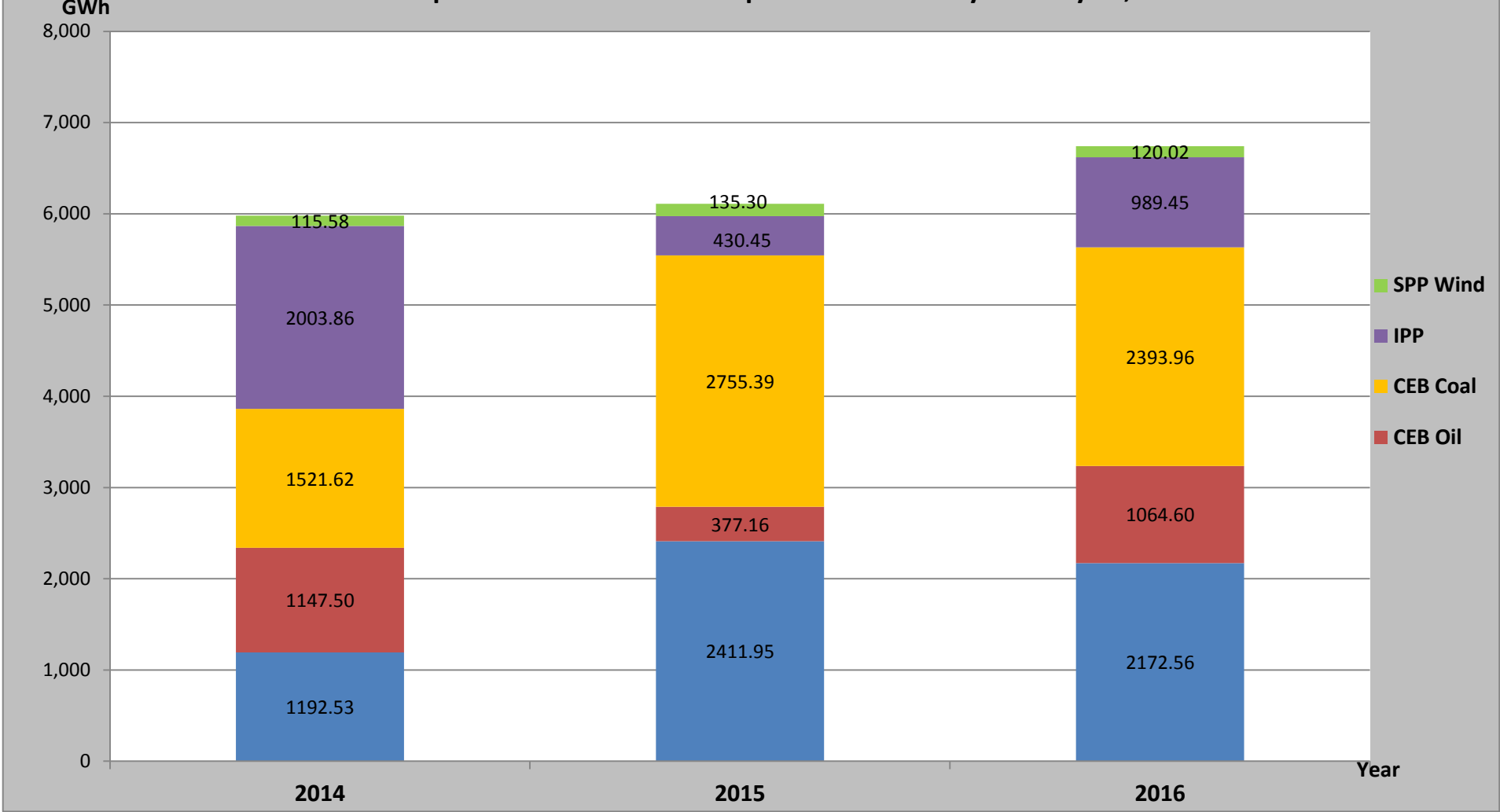
GWh





Note: Contribution from Mini Hydro, Solar and Biomass is not included

Comparison of Cumulative Dispatch from January 1 to July 06, 2016



Note: Generation from SPP Mini Hydro, Solar and Biomass is not included

Load Curve of July 5,2016 will be published in Generation Report of July 10, 2016

List of Power Stations

| Power Station | Capacity (MW) | Primary Fuel |
|-------------------------------------|---------------|-------------------------|
| CEB Hydro | | |
| Victoria | 210 | |
| Ukuwela | 40 | |
| Kotmale | 201 | |
| Randenigala | 122 | |
| Rantambe | 49 | |
| Bowatenna | 40 | |
| Nilambe | 3.2 | |
| Upper Kotmale | 150 | |
| Old Laxapana | 50 | |
| New Laxapana | 115 | |
| Polpitiya | 75 | |
| Wimalasurendra | 50 | |
| Canyon | 60 | |
| Samanalawewa | 120 | |
| Kukuleganga | 75 | |
| Inginiyagala | 10 | |
| Udawalawe | 6 | |
| CEB Thermal | | |
| Sapugaskanda 1 | 72 | Heavy Fuel |
| Sapugaskanda 2 | 72 | Heavy Fuel |
| Kelanitissa Small Gas Turbines | 68 | Auto Diesel |
| GT 7 - Kelanitissa | 115 | Auto Diesel |
| Kelanitissa CCY | 165 | Naptha & Diesel |
| Lakvijaya (Puttalam Coal) | 285 | Coal |
| Lakvijaya (Puttalam Coal) Stage II | 285 | Coal |
| Lakvijaya (Puttalam Coal) Stage III | 285 | Coal |
| Uthuru Janani | 24 | Heavy Fuel |
| Barge CEB | 60 | Furnace Oil |
| Private Thermal (IPPs) | | |
| Asia Power | 51 | Heavy Fuel |
| Sojitz - Kelanitissa | 163 | Auto Diesel |
| West Coast | 270 | Low Sulphur Furnace oil |
| Northern Power | 27 | Auto Diesel |
| ACE Embilipitiya | 100 | Furnace Oil |