

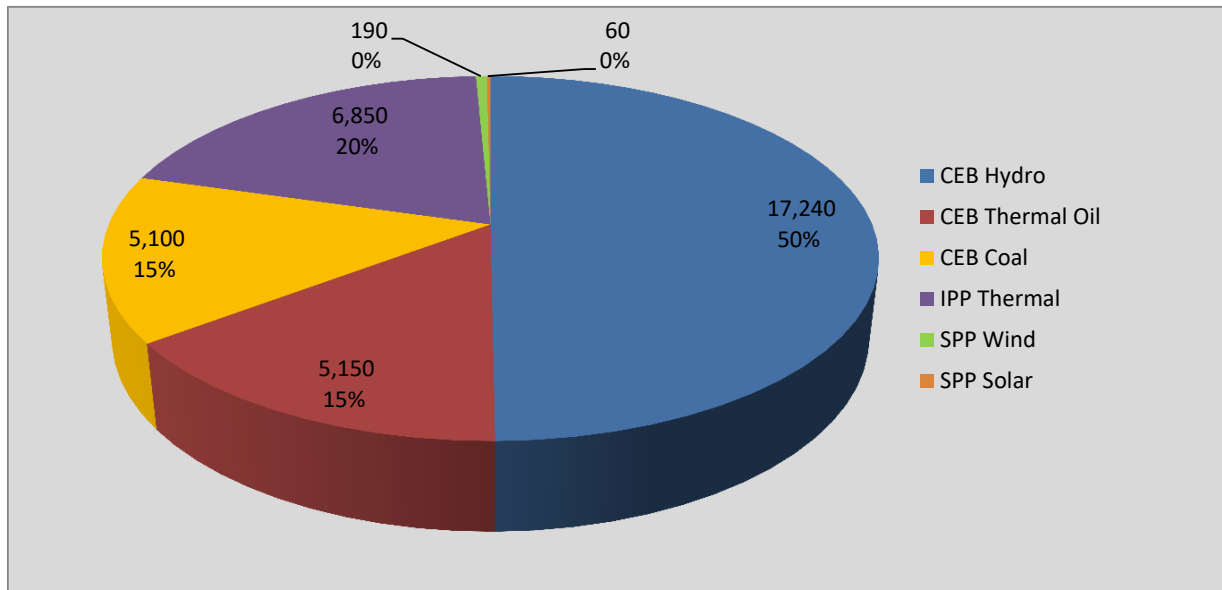
Generation and Reservoirs Statistics

November 7, 2017



PUBLIC UTILITIES COMMISSION OF SRI LANKA

Daily Generation Mix in MWh



Total Generation 34,580 MWh

Note: Generation from other SPPs (Mini Hydro, small scale Solar and Biomass) is not included

Cumulative Dispatch

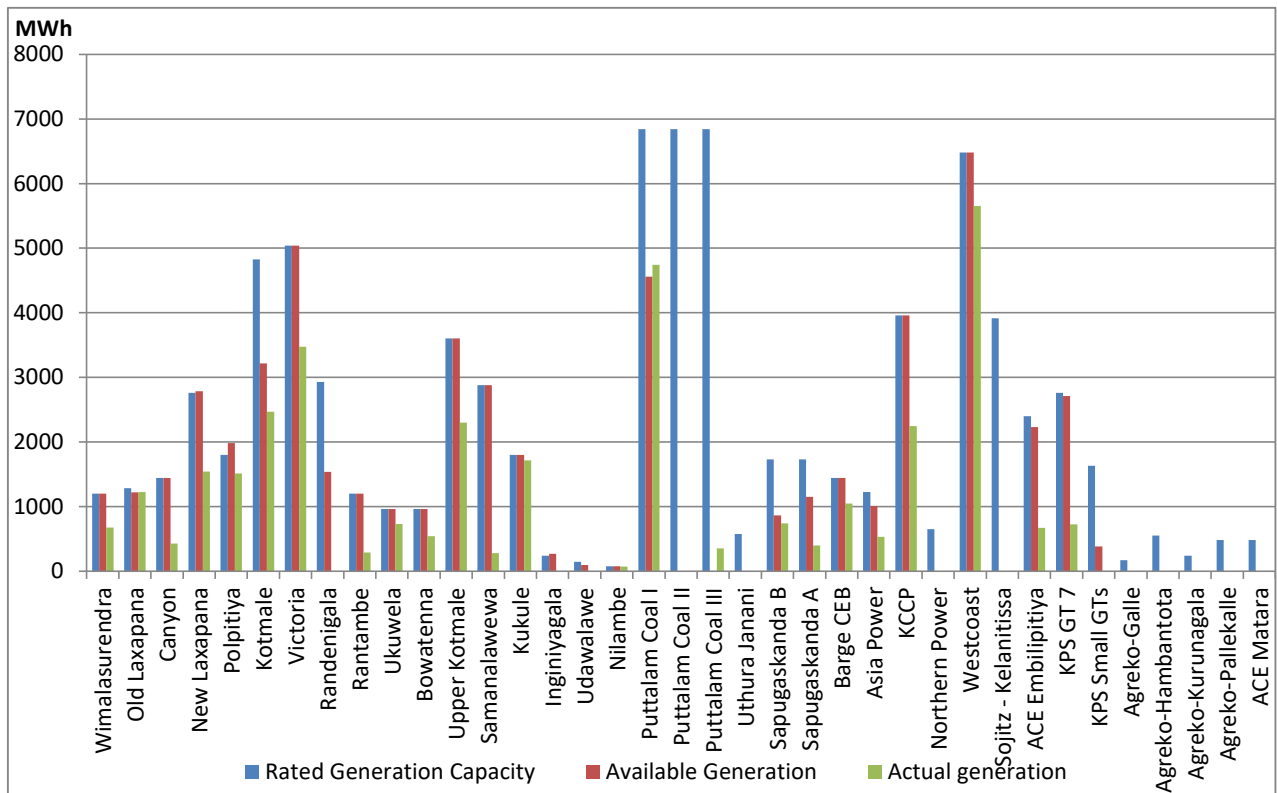
For Current Month

| Category | Dispatch (MWh) | Percentage |
|-----------------|------------------|------------|
| CEB Hydro | 100,041.0 | 43.06% |
| CEB Thermal Oil | 24,531.0 | 10.56% |
| CEB Coal | 90,106.0 | 38.78% |
| IPP Thermal | 15,639.0 | 6.73% |
| SPP Wind& Solar | 2,007.0 | 0.86% |
| Total | 232,324.0 | |

For Current Year

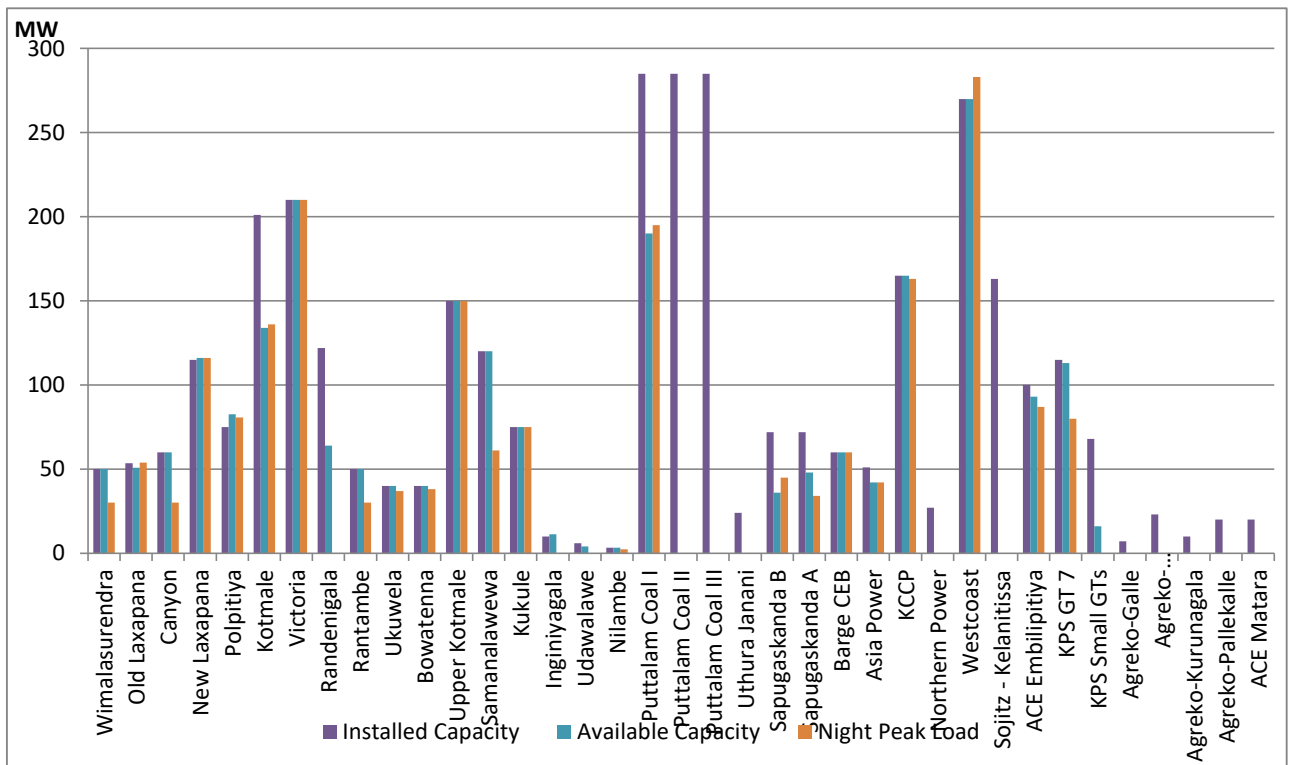
| Category | Dispatch (GWh) | Percentage |
|-----------------|----------------|------------|
| CEB Hydro | 2,303 | 18.69% |
| CEB Thermal Oil | 2,207 | 17.91% |
| CEB Coal | 4,677 | 37.95% |
| IPP Thermal | 2,198 | 17.84% |
| Renewable | 937 | 7.61% |
| Total | 12,323 | |

Plant Dispatch on November 7, 2017



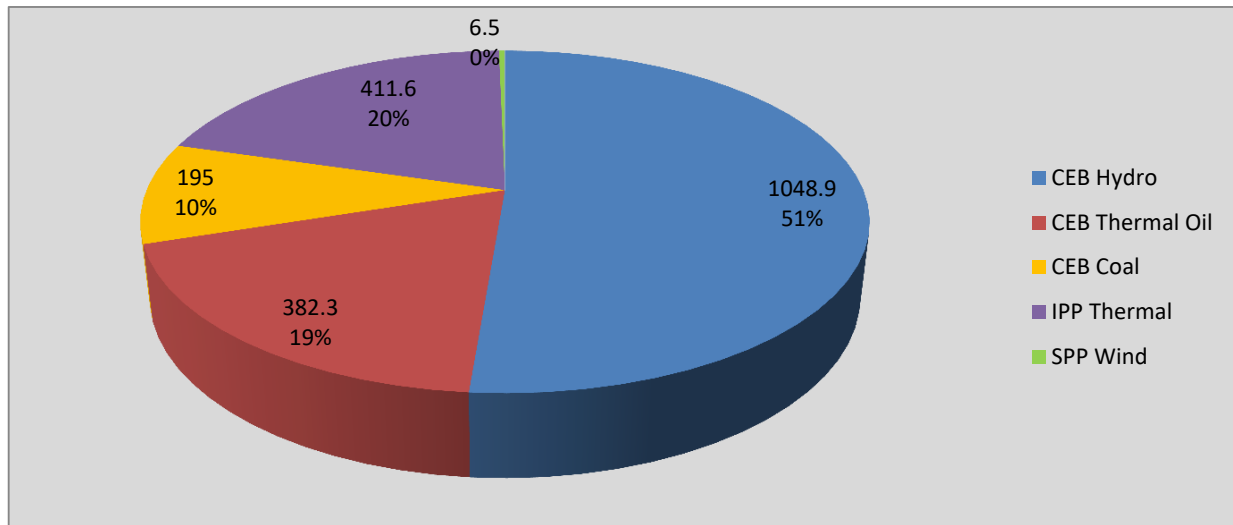
Note- Available Generation is estimated based on plant availability at 6.00am on November 8, 2017

Plant Loading at Night Peak on November 7, 2017



Note- Plant availability is recorded at 6.00 am on November 8, 2017

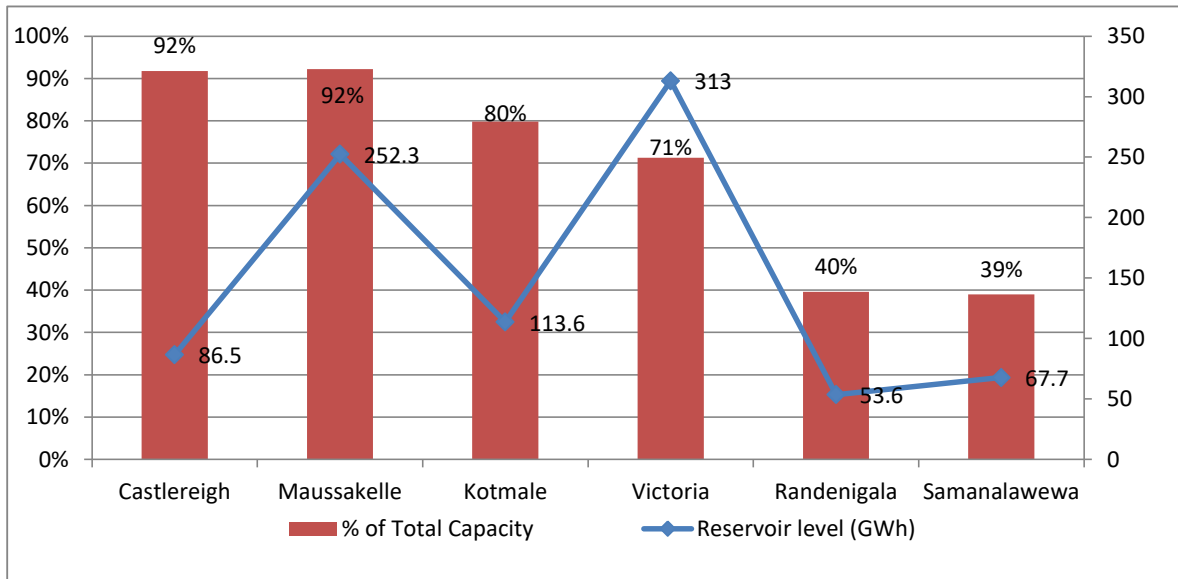
Contribution to the Night Peak in MW



| | |
|----------------|------------|
| Night Peak | 2,044.3 MW |
| Day Peak | 1,737.6 MW |
| Minimum Demand | 714.2 MW |

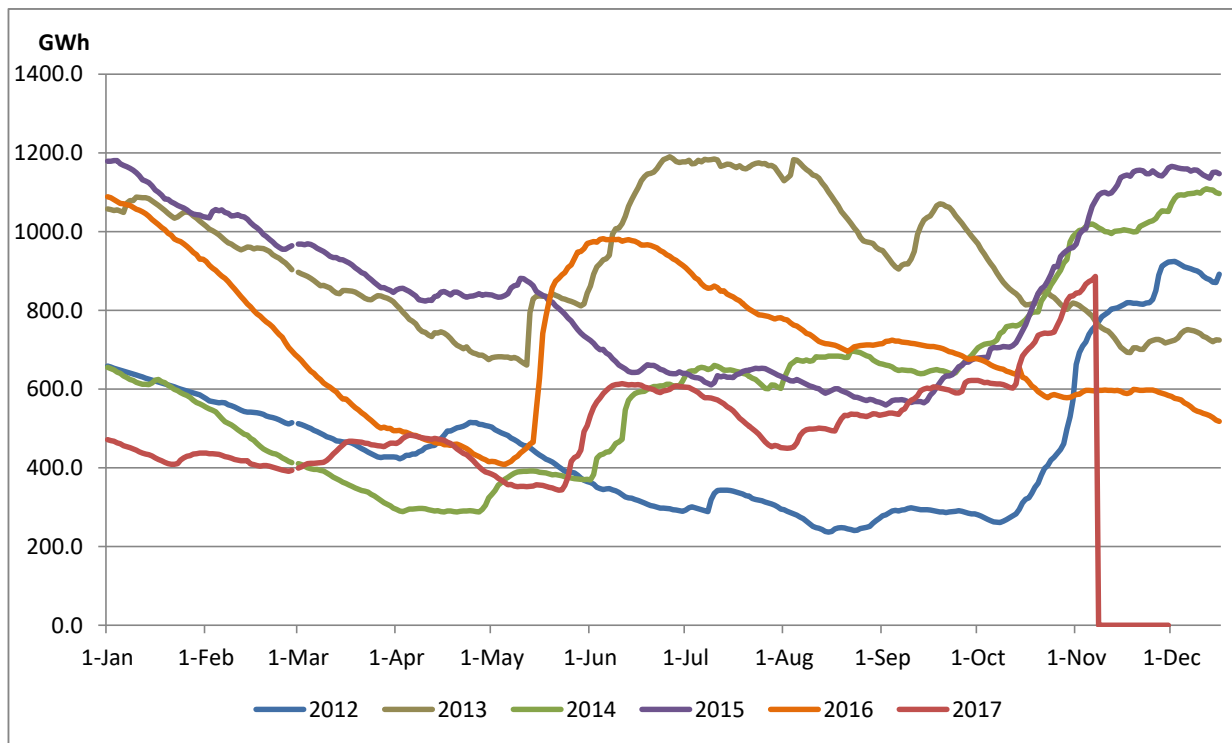
Note: Contribution from other SPPs (Mini Hydro, Solar and Biomass) is not included

Reservoir Levels - as at 06.00 Hr on November 8, 2017

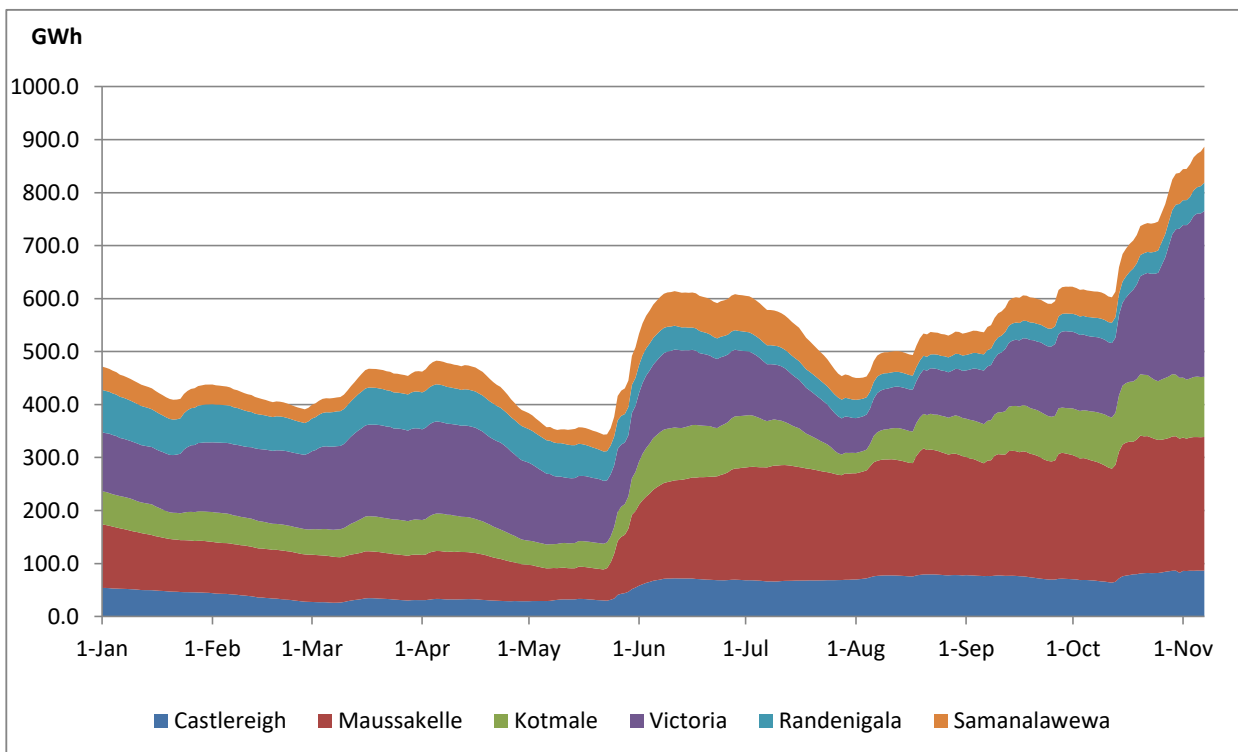


| | |
|----------------------------|-------|
| Total Reservoir Level(GWh) | 886.6 |
| % of Total capacity | 70.5% |

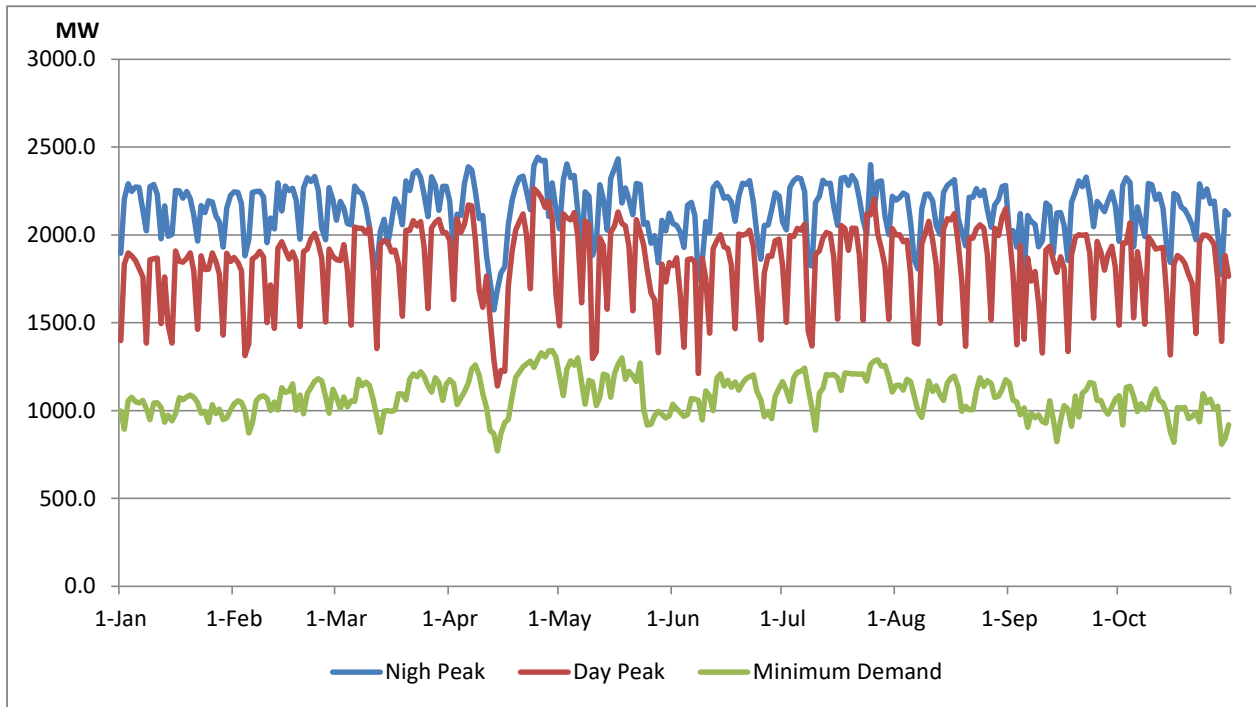
Comparison of Total Reservoir Storage Levels with Past Years



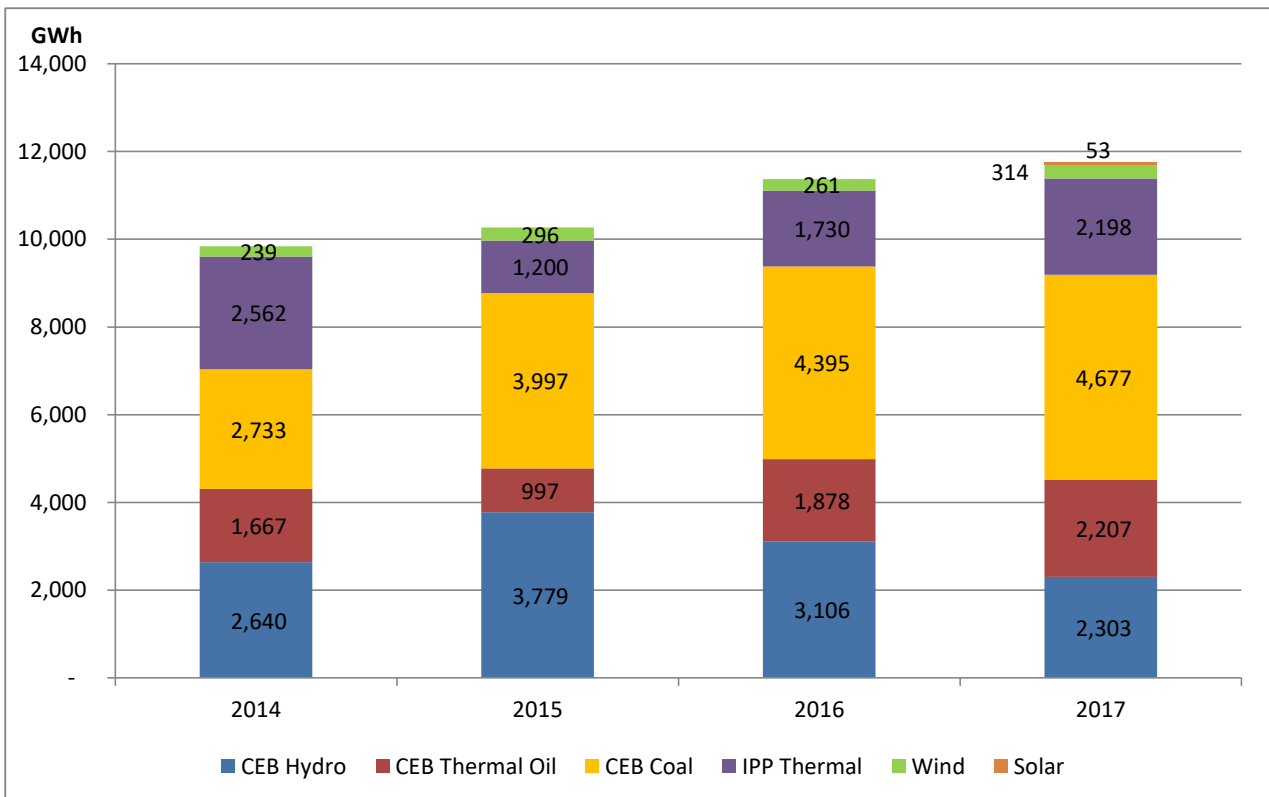
Variation of Major Hydro Reservoir Levels in GWh- 2017



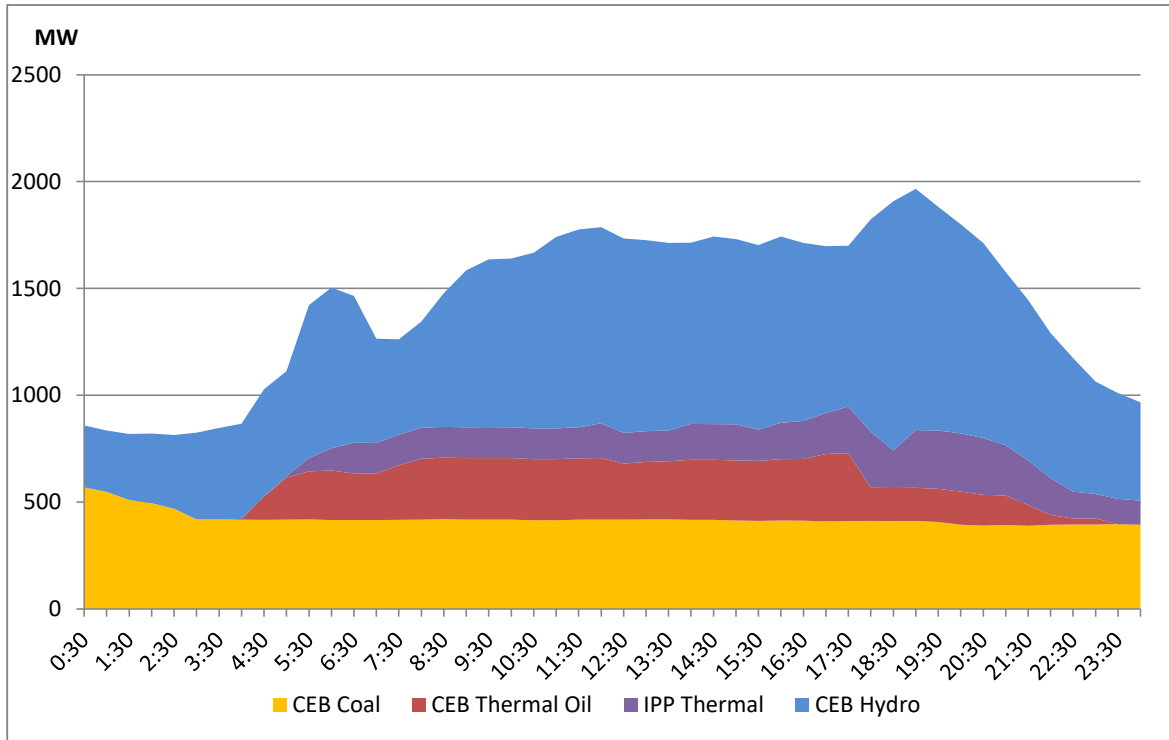
Variation of Demand 2017



Comparison of Cumulative Dispatch



Daily Load Curve - November 6, 2017



| Power Station | Capacity (MW) | Primary Fuel |
|-------------------------------|---------------|-------------------------|
| CEB Hydro | | |
| Victoria | 210 | |
| Ukuwela | 40 | |
| Kotmale | 201 | |
| Randenigala | 122 | |
| Rantambe | 49 | |
| Bowatenna | 40 | |
| Nilambe | 3.2 | |
| Upper Kotmale | 150 | |
| Old Laxapana | 50 | |
| New Laxapana | 115 | |
| Polpitiya | 75 | |
| Wimalasurendra | 50 | |
| Canyon | 60 | |
| Samanalawewa | 120 | |
| Kukuleganga | 75 | |
| Inginiyagala | 10 | |
| Udawalawe | 6 | |
| | | |
| CEB Thermal | | |
| Sapugaskanda 1 | 72 | Heavy Fuel |
| Sapugaskanda 2 | 72 | Heavy Fuel |
| Kelanitissa Small Gas Turb | 68 | Auto Diesel |
| GT 7 - Kelanitissa | 115 | Auto Diesel |
| Kelanitissa CCY | 165 | Naptha & Diesel |
| Lakvijaya (Puttalam Coal) | 285 | Coal |
| Lakvijaya (Puttalam Coal) | 285 | Coal |
| Lakvijaya (Puttalam Coal) | 285 | Coal |
| Uthuru Janani | 24 | Heavy Fuel |
| Barge CEB | 60 | Furnace Oil |
| | | |
| Private Thermal (IPPs) | | |
| Asia Power | 51 | Heavy Fuel |
| Sojitz - Kelanitissa | 163 | Auto Diesel |
| West Coast | 270 | Low Sulphur Furnace oil |
| Northern Power | 27 | Auto Diesel |
| ACE Embilipitiya | 100 | Furnace Oil |