

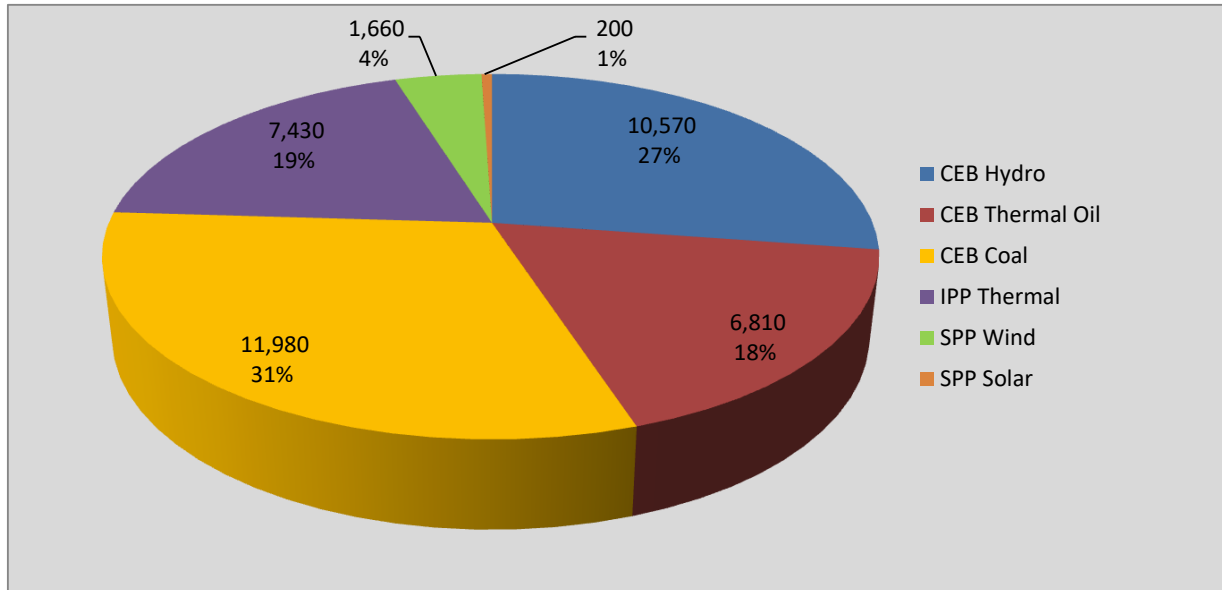
Generation and Reservoirs Statistics

September 26, 2017



PUBLIC UTILITIES COMMISSION OF SRI LANKA

Daily Generation Mix in MWh



Total Generation 38,640 MWh

Note: Generation from other SPPs (Mini Hydro, small scale Solar and Biomass) is not included

Cumulative Dispatch

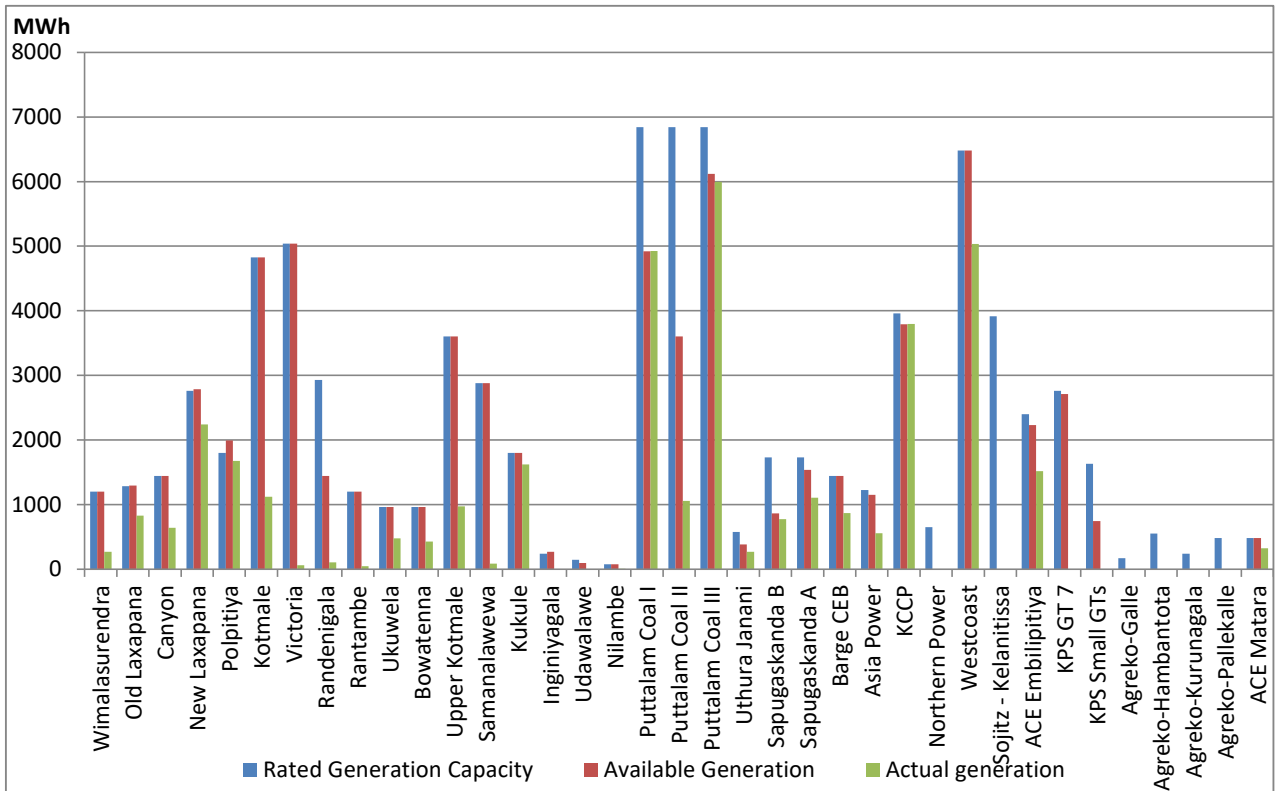
For Current Month

Category	Dispatch (MWh)	Percentage
CEB Hydro	286,617.0	30.22%
CEB Thermal Oil	177,811.0	18.75%
CEB Coal	281,848.0	29.72%
IPP Thermal	164,742.0	17.37%
SPP Wind& Solar	37,340.0	3.94%
Total	948,358.0	

For Current Year

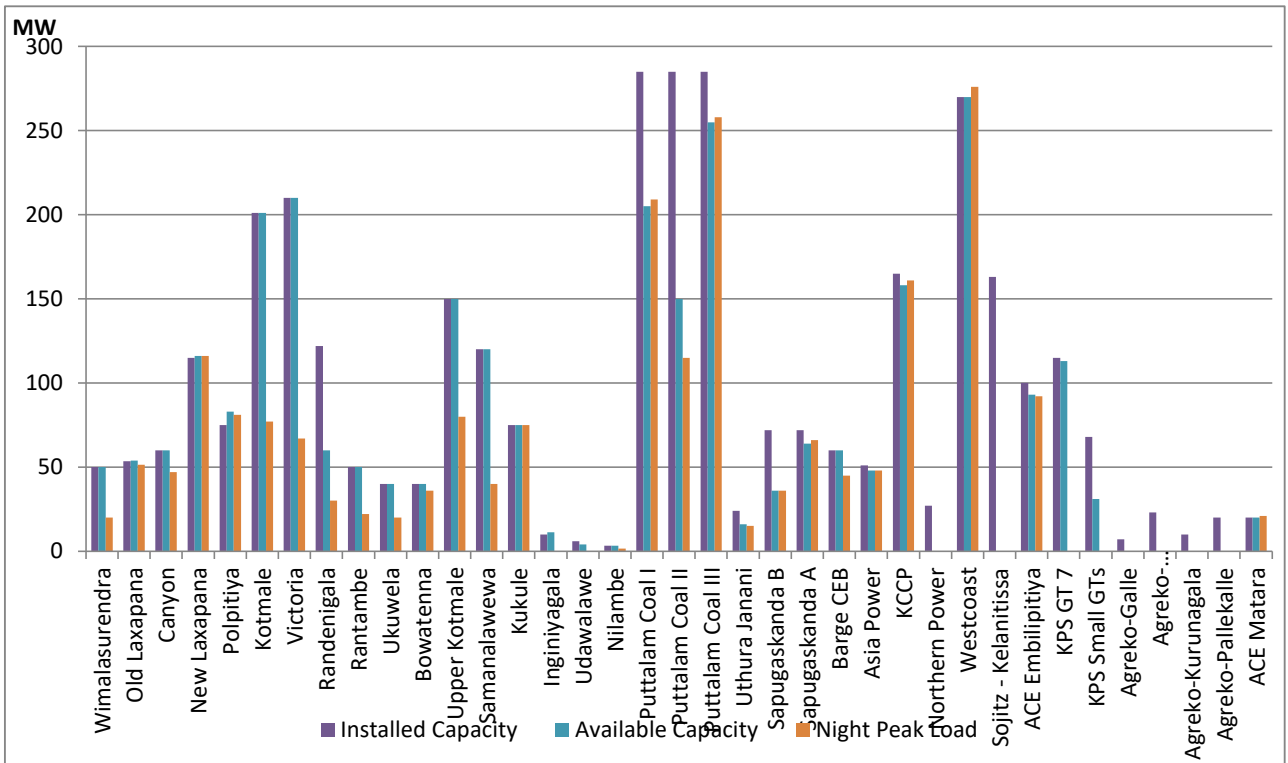
Category	Dispatch (GWh)	Percentage
CEB Hydro	1,800	16.97%
CEB Thermal Oil	1,972	18.58%
CEB Coal	4,058	38.25%
IPP Thermal	2,080	19.60%
Renewable	701	6.61%
Total	10,611	

Plant Dispatch on September 26, 2017



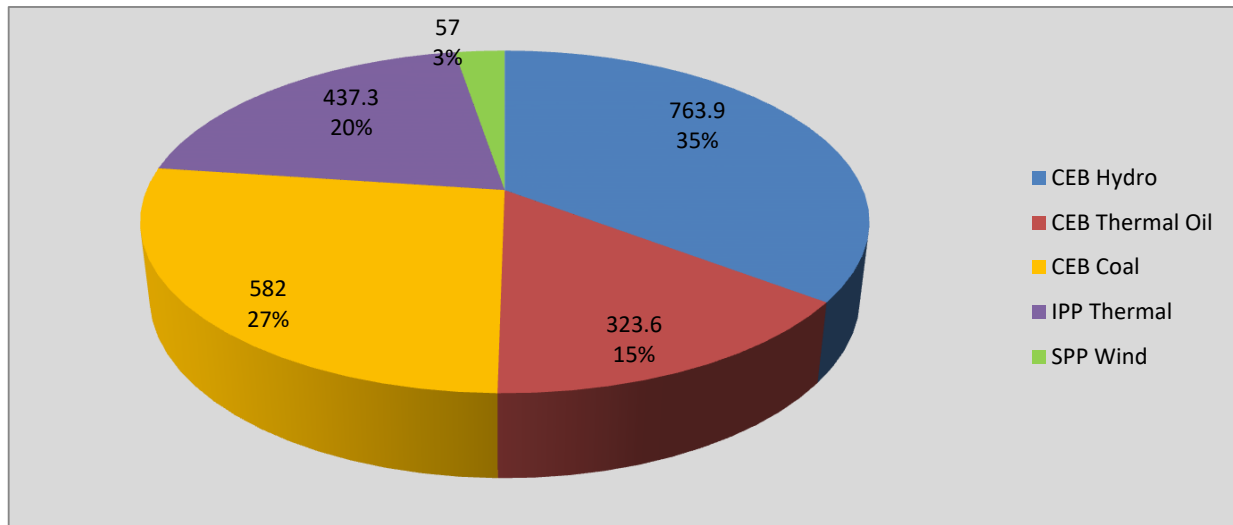
Note- Available Generation is estimated based on plant availability at 6.00am on September 27, 2017

Plant Loading at Night Peak on September 26, 2017



Note- Plant availability is recorded at 6.00 am on September 27, 2017

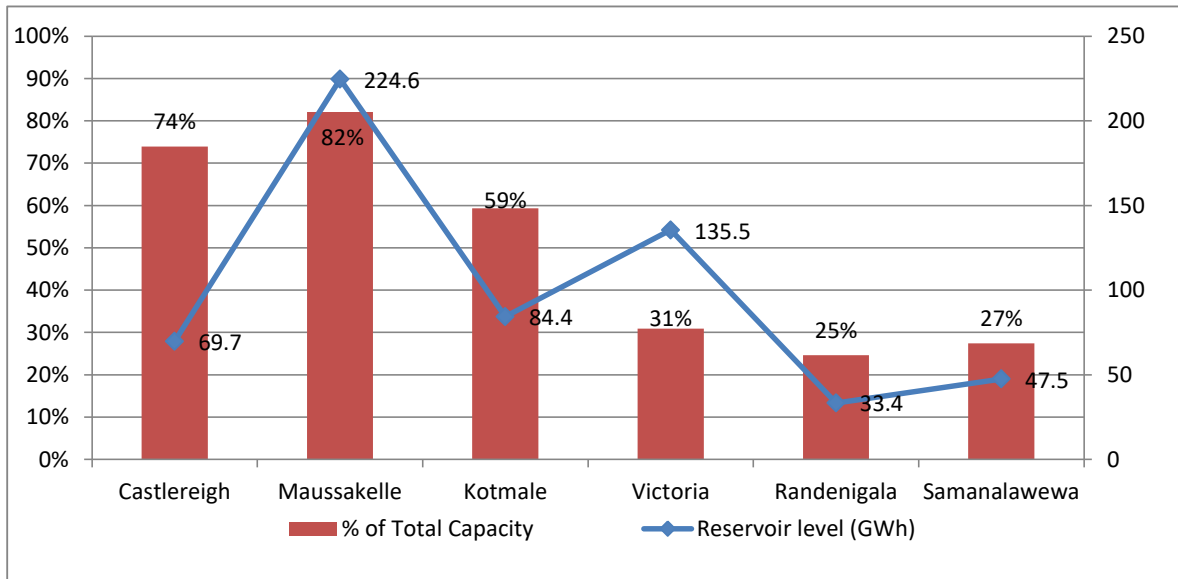
Contribution to the Night Peak in MW



Night Peak	2,163.8 MW
Day Peak	1,902.0 MW
Minimum Demand	1,058.5 MW

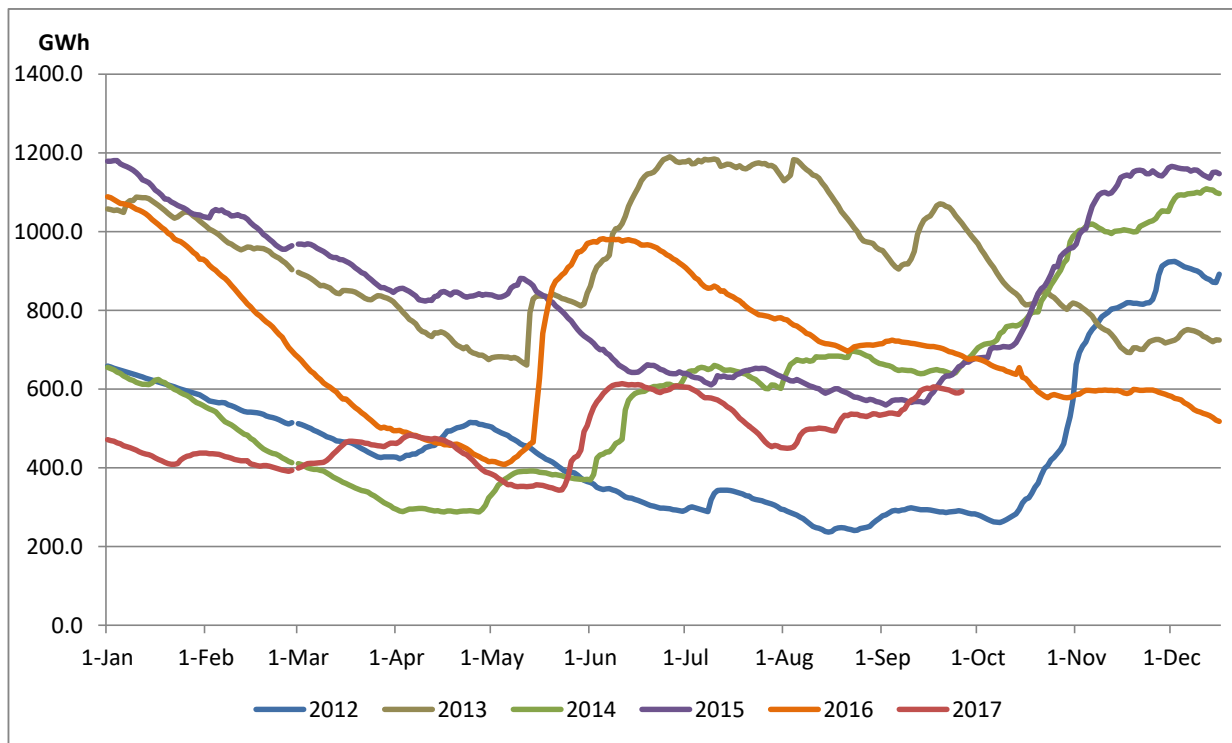
Note: Contribution from other SPPs (Mini Hydro, Solar and Biomass) is not included

Reservoir Levels - as at 06.00 Hr on September 27, 2017

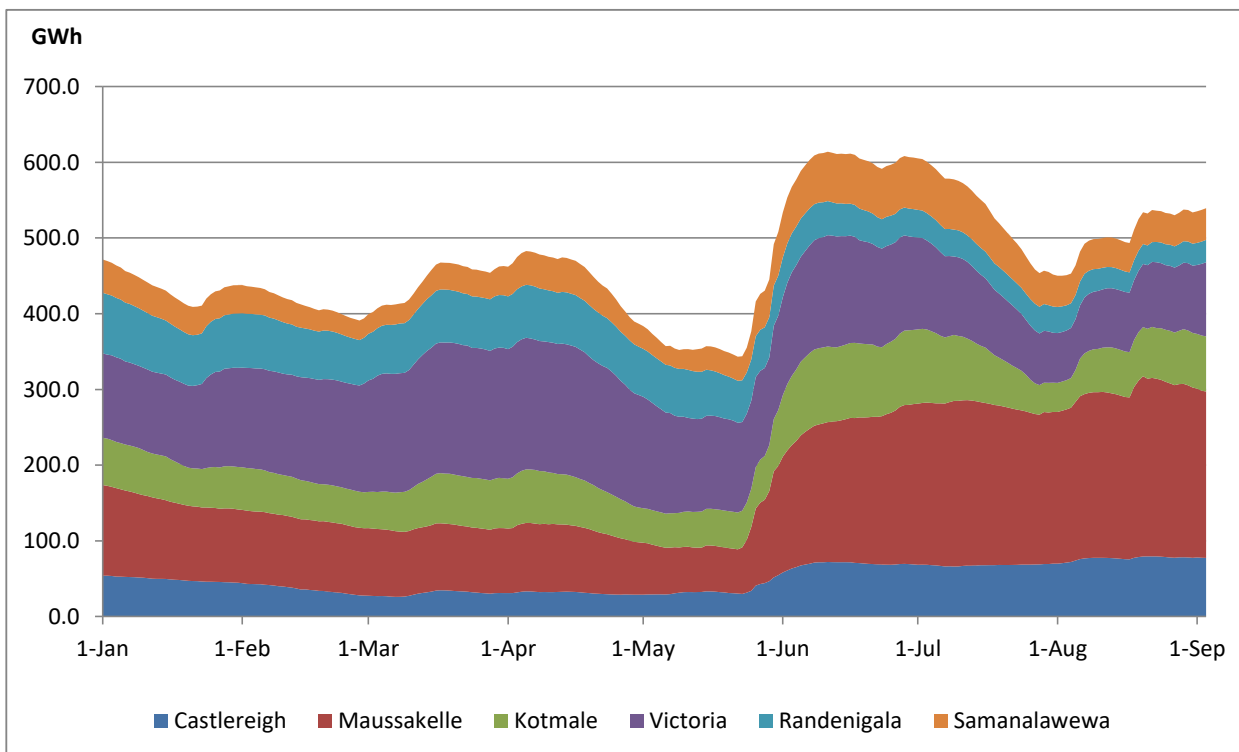


Total Reservoir Level(GWh)	594.9
% of Total capacity	47.3%

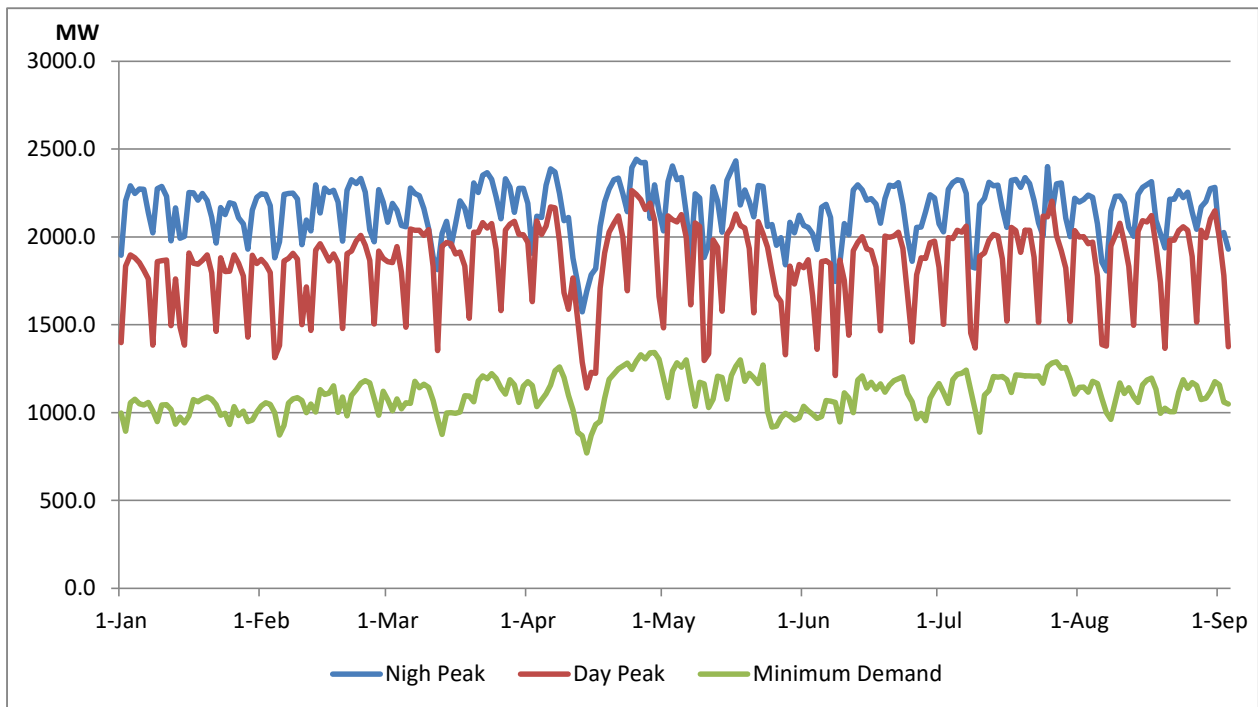
Comparison of Total Reservoir Storage Levels with Past Years



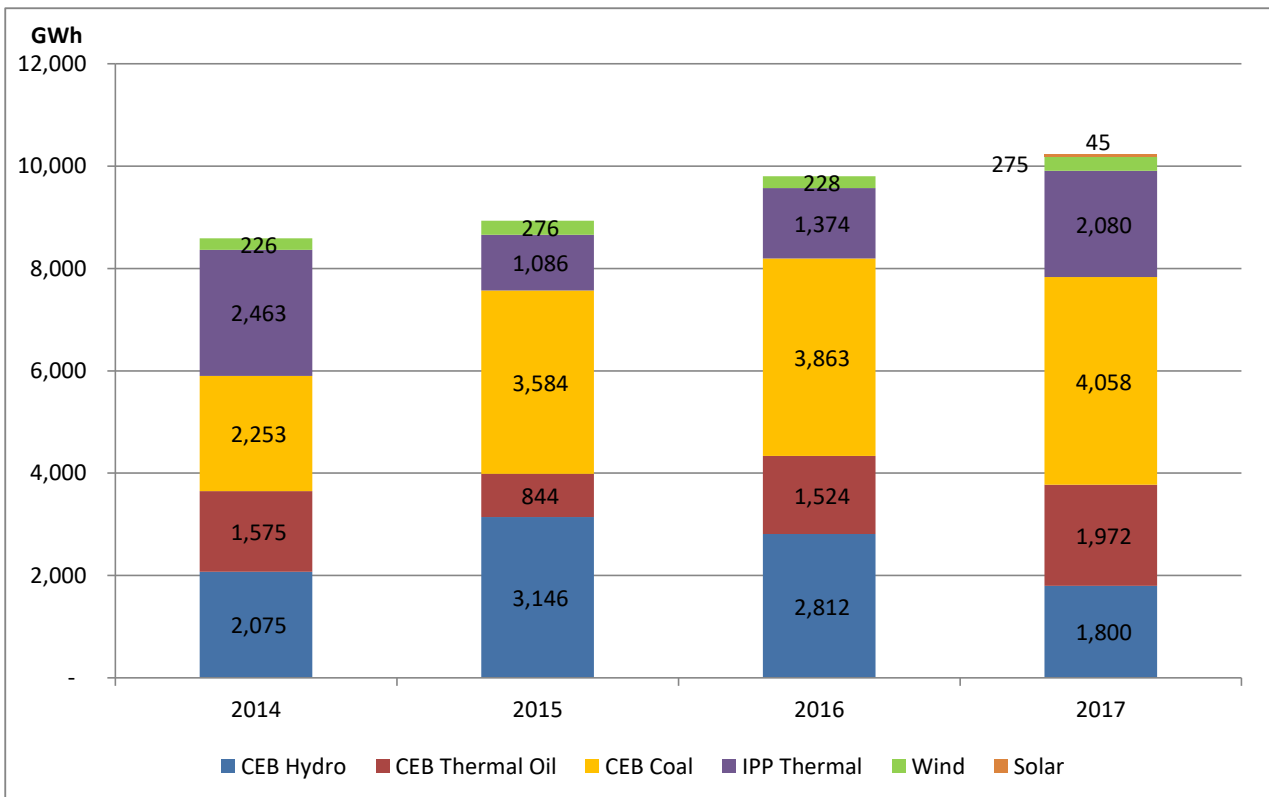
Variation of Major Hydro Reservoir Levels in GWh- 2017



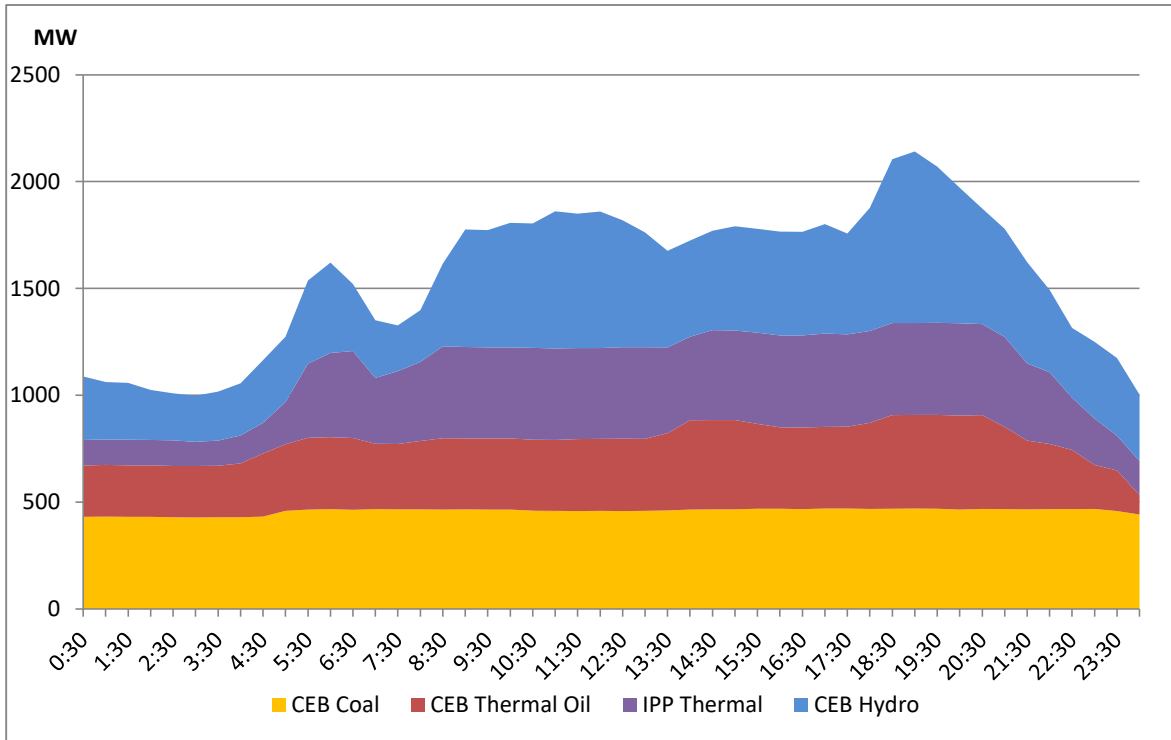
Variation of Demand 2017



Comparison of Cumulative Dispatch



Daily Load Curve - September 25, 2017



Power Station	Capacity (MW)	Primary Fuel
CEB Hydro		
Victoria	210	
Ukuwela	40	
Kotmale	201	
Randenigala	122	
Rantambe	49	
Bowatenna	40	
Nilambe	3.2	
Upper Kotmale	150	
Old Laxapana	50	
New Laxapana	115	
Polpitiya	75	
Wimalasurendra	50	
Canyon	60	
Samanalawewa	120	
Kukuleganga	75	
Inginiyagala	10	
Udawalawe	6	
CEB Thermal		
Sapugaskanda 1	72	Heavy Fuel
Sapugaskanda 2	72	Heavy Fuel
Kelanitissa Small Gas Turb	68	Auto Diesel
GT 7 - Kelanitissa	115	Auto Diesel
Kelanitissa CCY	165	Naptha & Diesel
Lakvijaya (Puttalam Coal)	285	Coal
Lakvijaya (Puttalam Coal)	285	Coal
Lakvijaya (Puttalam Coal)	285	Coal
Uthuru Janani	24	Heavy Fuel
Barge CEB	60	Furnace Oil
Private Thermal (IPPs)		
Asia Power	51	Heavy Fuel
Sojitz - Kelanitissa	163	Auto Diesel
West Coast	270	Low Sulphur Furnace oil
Northern Power	27	Auto Diesel
ACE Embilipitiya	100	Furnace Oil